

This is a self-archived version of an original article. This version may differ from the original in pagination and typographic details.

Author(s): Lusa, Merja; Help, Hanna; Honkanen, Ari-Pekka; Knuutinen, Jenna; Parkkonen, Joni; Kalasová, Dominika; Bomberg, Malin

Title: The reduction of selenium(IV) by boreal *Pseudomonas* sp. strain T5-6-I : Effects on selenium(IV) uptake in *Brassica oleracea*

Year: 2019

Version: Accepted version (Final draft)

Copyright: © 2019 Elsevier Inc.

Rights: CC BY-NC-ND 4.0

Rights url: <https://creativecommons.org/licenses/by-nc-nd/4.0/>

Please cite the original version:

Lusa, M., Help, H., Honkanen, A.-P., Knuutinen, J., Parkkonen, J., Kalasová, D., & Bomberg, M. (2019). The reduction of selenium(IV) by boreal *Pseudomonas* sp. strain T5-6-I : Effects on selenium(IV) uptake in *Brassica oleracea*. *Environmental Research*, 177, Article 108642. <https://doi.org/10.1016/j.envres.2019.108642>

The reduction of selenium(IV) by boreal *Pseudomonas* sp. strain T5-6-I – effects on selenium(IV) uptake in *Brassica oleracea*

Merja Lusa^{1*}, Hanna Help², Ari-Pekka Honkanen², Jenna Knuutinen¹, Joni Parkkonen³, Dominika Kalasová⁴, Malin Bomberg⁵

1 Department of Chemistry, Radiochemistry, Faculty of Science, University of Helsinki

2 Department of Physics, X-Ray laboratory, Faculty of Science, University of Helsinki

3 Department of Physics, University of Jyväskylä

4 CEITEC - Central European Institute of Technology, Brno University of Technology, Brno, Czech Republic

5 Material Recycling and Geotechnology, VTT, Technical Research Center of Finland, Espoo

* Corresponding author: merja.lusa@helsinki.fi

Abstract

Selenium (Se) is an essential micronutrient but toxic when taken in excessive amounts. Therefore, understanding the metabolic processes related to selenium uptake and bacteria-plant interactions coupled with selenium metabolism are of high importance. We cultivated Brassica oleracea with the previously isolated heterotrophic aerobic Se(IV)-reducing Pseudomonas sp. T5-6-I strain to better understand the phenomena of bacteria-mediated Se(IV) reduction on selenium availability to the plants. B. oleracea grown on Murashige and Skoog medium (MS-salt agar) with and without of Pseudomonas sp. were amended with Se(IV)/⁷⁵Se(IV), and selenium transfer into plants was studied using autoradiography and gamma spectroscopy. XANES was in addition used to study the speciation of selenium in the B. oleracea plants. In addition, the effects of Se(IV) on the protein expression in B. oleracea was studied using HPLC-SEC. TEM and confocal microscopy were used to follow the bacterial/Se-aggregate accumulation in plants and the effects of bacterial inoculation on root-hair growth. In the tests using ⁷⁵Se(IV) on average 130% more selenium was translocated to the B. oleracea plants grown with Pseudomonas sp. compared to the plants grown with selenium, but without Pseudomonas sp.. In addition, these bacteria notably increased root hair density. Changes in the protein expression of B. oleracea were observed on the ~30 – 58 kDa regions in the Se(IV) treated samples, probably connected e.g. to the oxidative stress induced by Se(IV) or expression of proteins connected to the Se(IV) metabolism. Based on the XANES measurements, selenium appears to accumulate in B. oleracea mainly in organic C-Se-H and C-Se-C bonds with and without bacteria inoculation. We conclude that the Pseudomonas sp. T5-6-I strain seems to contribute positively to the selenium accumulation in plants, establishing the high potential of Se⁰-producing bacteria in the use of phytoremediation and biofortification of selenium.

Keywords: Bacteria, Pseudomonas, Selenium, Plant uptake, Bacteria-plant interactions

1. Introduction

Selenium (Se) is an essential micronutrient for humans and animals (Rayman 2000, Hartikainen 2005, Gupta and Gupta 2017), but is characterized by a very narrow range between deficient (<40 µg/day for human diet) and toxic (>400 µg/day for human diet) (WHO 1996) concentrations for most living organisms. In low concentrations selenium has antioxidant properties and in animals it is essential e.g. in immune responses and thyroid hormone metabolism (Reid et al. 2008). Selenium deficiency induces heart and joint related diseases, such as endemic cardiomyopathy and arthritis that have been

1
2
3
4 documented especially in the regions of the World with extremely selenium-poor soils (Rayman 2000).
5 In contrast, based on epidemiologic studies, chronic exposure to raised selenium intake, especially in
6 regions with elevated soil selenium concentrations, is associated with several adverse health effects.
7 These include the impairment of the synthesis of thyroid hormones and metabolism of growth hormone
8 as well as hepatotoxicity, gastrointestinal disturbances and nail and hair loss and dermatitis (Vinceti et
9 al. 2001). Selenium supplementation may also increase risk for the type 2 diabetes (Stranges et al.
10 2010).
11
12

13
14 Human dietary intakes of selenium range from high to low according to geography and local soil
15 conditions. The mean crustal abundance of selenium is 0.083mg/ kg (Antonyak et al. 2018). In most
16 soils selenium concentrations range from 0.1 to 2 mg/kg (Oldfield 2002), but extremely high Se
17 contents up to 1200 mg/kg have been reported e.g. from organic-rich soils in Ireland (Fleming and
18 Walsh 1957). Understanding of these variations, and the biogeochemical factors affecting them, is
19 essential for the improvement of health problems associated with selenium deficiency and toxicity.
20 Certain regions of the world, including Finland, Sweden and Scotland, are deficient in selenium, while
21 others (e.g. Japan, Greenland, USA, Venezuela and Canada) are Se-rich/Se-toxic due to natural and
22 anthropogenic activities (Zhu et al. 2009, Yin and Yuan 2012, Fordyce 2005). Natural sources of
23 environmental selenium include forest fires and soil erosion, whereas considerable amounts of
24 selenium enter the environment via anthropogenic activities including coal combustion, mining,
25 refining of sour crude oils and agricultural irrigation of seleniferous soils (Manceau et al. 1997, de
26 Souza et al. 1999, Sharmasarkar and Vance 2002, Coppin et al. 2009). In addition, regarding the
27 radiation protection point of view, the radioactive long-lived isotope of selenium, ⁷⁹Se, is found in
28 spent nuclear fuel and is one of the high priority radionuclides when the biosphere safety of spent
29 nuclear fuel disposal is to be considered (Helin et al. 2010).
30
31
32
33

34
35 Selenium enters the food chain through plants that take it up from the soil. In alkaline (agricultural)
36 soils, selenium mostly exists as selenate (Se(VI), SeO₄²⁻) whereas in acidic (forest) soils it exists as
37 selenite (Se(IV), SeO₃²⁻). The forms of selenium differ in terms of their absorption and mobility within
38 the plant and are metabolized to form selenocompounds (Li et al., 2008). Selenite has been reported to
39 be transported by a phosphate transport mechanism (Li et al., 2008) while selenate uptake is believed to
40 occur through sulfate transporters (Feist and Parker, 2001, Zhang et al., 2003). However, only recently
41 the involvement of a putative selenium-binding protein (SBP) gene family, composed of three members
42 (SBP1–SBP3) has been described in *Arabidopsis thaliana* (e.g. Schild et al. 2014).
43
44

45
46 Plants are the main source of dietary selenium and plant selenium concentrations can vary from
47 0.005mg/kg in Se-deficient crops to 5500mg/kg in selenium hyper-accumulators (Fordyce 2005). The
48 essentiality of selenium for plants is still debatable (Dumont et al. 2006, Gupta and Gupta 2017). At
49 low doses, selenium may protect the plants from variety of abiotic stresses, such as cold, drought, and
50 metal stress (Chu et al. 2010, Hasanuzzaman and Fujita 2011, Kumar et al. 2012). However, at higher
51 doses selenium becomes toxic also for plants and its toxicity is caused by two different mechanisms; 1)
52 the formation of malformed proteins due to the misincorporation of selenocysteine (SeCys) or
53 selenomethionine (SeMet) in place of cysteine (Cys) or methionine (Met) in a protein, or 2) by
54 inducing oxidative stress (Gupta and Gupta 2017).
55
56

57
58 Plants are in continuous contact with soil microbiota (Srivastava et al. 2012), which can modify the soil
59 chemical environment through e.g. oxidation and reduction reactions and secretion of metabolites,
60
61
62

1
2
3
4 altering the availability of chemical elements for plants. Interactions between plants and
5 microorganisms take place during different phases of the plant life cycle and many of these interactions
6 can be beneficial for the plant (Schirawski and Perlin 2018). In fact, there are multiple interactions
7 where the plant benefits either directly or indirectly of the associated microbes. Further, plants may act
8 as protected habitats for bacteria occupying the surfaces of the plant, the apoplast or the soil
9 surrounding the plant roots (Schirawski and Perlin 2018). In addition, plants may release compounds
10 attracting the accompanying soil bacteria and the associated microbes may in turn secrete compounds
11 that favour e.g. plant growth, increase the plant capacity to resist abiotic and biotic stress or protect the
12 plant against malignant microbes. Soil bacteria (especially plant growth promoting rhizobacteria,
13 PGPR, such as *Pseudomonas putida*) can e.g. promote plant growth through production of
14 phytohormones (e.g. indole-3-acetic acid (IAA), auxin, gibberellins) (Joo et al. 2005, Idris et al. 2007,
15 Srivastava et al. 2012). Previously, we found that bacteria affected selenium behavior and retention in
16 boreal bog environment and that the *Pseudomonas* sp. strain (T5-6-I) (Lusa et al. 2016), which was
17 also used in the present study, removed ⁷⁵Se(IV) from solutions under different nutrient conditions
18 (Lusa et al. 2015). In experiments with stable Se isotopes, brick-red reduced elemental selenium (Se⁰)
19 was formed from both Se(IV) and Se(VI) in incubations with the *Pseudomonas* sp. strain T5-6-I under
20 aerobic conditions (Lusa et al. 2017). However, the reduction was significantly more efficient for
21 Se(IV) and for Se(VI) formation of elemental selenium was only barely detectable (Lusa et al. 2017).
22 In addition, nitrate (NO₃⁻), nitrite (NO₂⁻) and sulfate (SO₄²⁻) enhanced Se(IV) uptake in *Pseudomonas*
23 sp. strain T5-6-I, and Se(IV) uptake continued also under sulphur and nitrogen starvation.
24
25
26
27
28
29
30

31
32 Previously, the uptake of selenium oxyanions Se(IV) and Se(VI) by plants has been studied e.g. in *A.*
33 *thaliana* (e.g. Barickman et al. 2013, White et al. 2004), *Stanleya pinnata* (e.g. El Mehdawi et al. 2017)
34 and *Brassica juncea* (e.g. El Mehdawi et al. 2017). In turn, the effects of bacteria, e.g. *P. putida*
35 (Srivastava et al. 2012), *Azospirillum brasilense*, *Serratia plymuthica*, *Stenotrophomonas maltophilia*
36 (Wenke et al. 2012), *Bacillus subtilis* and *Burkholderia cepacia* (Vespermann et al. 2007, Kai et al.
37 2008) have been reported on *Arabidopsis* growth. However, previous research on the simultaneous
38 effects of selenium and soil dwelling bacteria on selenium plant uptake is to date scarce. Previously,
39 bacteria belonging to the genera *Bacillus*, *Pseudomonas*, *Pantoea*, *Staphylococcus*, *Paenibacillus*,
40 *Advenella*, *Arthrobacter* and *Variovorax* have been found as endophytes from selenium
41 hyperaccumulators *S. pinnata* (*Brassicaceae*) and *Astragalus bisulcatus* (*Fabaceae*) (Sura-de Jong et al.
42 2015). These bacteria reduced Se(IV) to elemental Se⁰ and additionally had plant growth promoting
43 properties. However, they had no effect on the amount of selenium accumulated into the plant (Sura-de
44 Jong et al. 2015).
45
46
47

48
49 Nutritional intake is the most important source of selenium for humans and the biogeochemical
50 components, including soil microbiota, are in a key role when assessing the transfer of environmental
51 selenium into the human diet and its associated health effects (Fordyce 2005). Because of bacterial
52 synergy and interactions with plants, soil bacteria may have vital, yet unidentified, roles in plant macro-
53 and micronutrient metabolism as well as in overcoming toxic effects of e.g. selenium in different
54 regions of the world. Therefore understanding the metabolic processes related to the toxic Se(IV) stress
55 and bacteria-plant interactions in selenium accumulation is of high importance. To better understand
56 the effects of bacteria-mediated selenium oxyanion reduction (that changes the speciation of selenium
57 from Se(IV) available for plants to insoluble Se⁰) on the subsequent availability and transfer of
58 selenium to plants, we cultivated *Brassica oleracea* with above mentioned, previously isolated
59
60
61
62
63
64
65

1
2
3
4 heterotrophic aerobic T5-6-I strain (Lusa et al. 2016). This strain was especially interesting, as it
5 represents *Pseudomonas*, bacterial genus commonly found in many different types of environments,
6 having versatile metabolism. In addition, previously this strain was shown to remove especially Se(IV)
7 from growth solutions (Lusa et al. 2015, 2017). Therefore, this strain is suspect to affect particularly the
8 overall transfer of Se(IV), a highly toxic species of selenium, from soil solutions into plants. Se(IV) is
9 very reactive and reacts in particular with thiol groups found in glutathione (GSH), producing several
10 Se-containing compounds, including selenodiglutathione, glutathioselenol, hydrogen selenide (H₂Se)
11 and elemental selenium (Se⁰) (Tarze et al. 2007). This reaction produces also highly toxic oxygen
12 species like H₂O₂ and O²⁻ (Kramer and Ames 1988). *B. oleracea* was chosen as *Brassica* spp. are
13 known secondary accumulators (i.e. are typically able to accumulate up to 1000 mg Se/kg DW) of
14 selenium (Gupta and Gupta 2017).
15
16
17

18 2. Materials and methods

19
20
21 **Bacteria.** The isolation and characterization of the *Pseudomonas* sp. strain T5-6-I used in this study,
22 has been described in Lusa et al., 2016. The 16S rRNA gene sequence has been deposited in GenBank
23 under accession number KP100424. The stock cultures of this bacterium were grown aerobically on
24 sterile PCA growth plates (PCA, Merckoplate®) at 20 °C in the dark and the strain was re-cultivated on
25 new plates weekly.
26
27

28
29 **Plant material.** Seeds of *B. oleracea* were bought from a garden store. Surface sterilized (0.1 % Triton
30 X in 95% ethanol) seeds were sown on MS-agar (Murashige and Skoog Basal Salt Mixture, Sigma
31 M5524) (Xi et al. 2016) plates (50 mL) containing 1% sucrose (w/v) and 0.7% (w/v) agar (Sigma
32 A1296). *B. oleracea* plates were transferred to the growth chamber set at 23°C in 16/8 h light and dark
33 cycles immediately after sowing. Selenium (125 µM of selenite (Na₂Se(IV)O₃ (AlfaAesar®)) or 100 Bq
34 of radioisotopes of selenium ⁷⁵[Se(IV)O₃²⁻] with 2.7 × 10⁻⁸ M stable Se(IV) carrier) and bacterial
35 suspensions (0 or 5·10⁷ CFU of exponential growth phase bacteria) were added on one week old
36 seedlings by spreading in total 5 mL of the suspensions on the surface of the plant agar. Plants were
37 thereafter grown for two (XANES, gammaspectrometry and confocal experiments) or three weeks
38 (autoradiography, CT, and protein/HPLC experiments) depending on the set of experiments. Of all
39 plates 3 – 7 replicates were prepared depending on the set of experiments. For subsequent experiments,
40 leaves and roots of plants were harvested. Control samples without selenium or bacterium inoculation
41 were used in all experiments to ensure no contaminations occurred.
42
43
44

45
46 **The effect of Se(IV) on bacterial growth.** The effect of Se(IV) on the growth of *Pseudomonas* sp. T5-
47 6-I was tested by growing the *Pseudomonas* sp. T5-6-I with and without Se(IV) amendment. In these
48 experiments, the cells were grown in 1 % Tryptone solution at +20°C. Na₂Se(IV)O₃ (AlfaAesar®) was
49 added to the growth medium to a final concentration of 6 mM of Se(IV). The cells were incubated in
50 the dark on an orbital shaker (120 rpm) for up to 360 hours and sampled regularly. The absorbance of
51 the cell solutions without Se(IV) was recorded at the wavelength of 600 nm to estimate the overall
52 CFU/mL. Se(IV) amended samples were not used in the absorbance determinations due to the strong
53 formation of Se precipitates interfering with the measurements. However, viable cell counts (CFU/mL)
54 were determined for both Se(IV) treated and control samples without Se(IV). The samples were serially
55 diluted in 10-fold steps to a dilution of 10⁻⁶. Aliquots of 100 µL from dilutions 10⁻⁴ and 10⁻⁶ were
56 spread on Plate Count Agar (PCA, Merckoplate®) and the plates were further incubated aerobically at
57 20°C for up to 408 hours in the dark and the CFUs were counted.
58
59
60
61
62

1
2
3
4 **Speciation of selenium in bacterial cells and in plant material.** The speciation of selenium in the
5 *Pseudomonas* sp. cells and in the differentially treated roots and leaves of *B. oleracea* plants was
6 examined using X-ray absorption near-edge structure (XANES) spectroscopy. The XANES
7 measurements were performed at Se K edge (12.7 keV) using a table top Johann-type spectrometer
8 detailed in (Honkanen et al. 2019). For the XANES experiments bacterial cultures were treated with 3
9 or 6 mM Se(IV) and incubated under aerobic conditions at 20 °C for 7 days. After incubation, the cells
10 were separated by centrifugation at 5000×g for 15 min at room temperature followed by washing of the
11 remaining bacterial pellet twice with 0.01 M (pH 7) phosphate buffer. Thereafter, bacterial pellets pre-
12 frozen at -18 °C were lyophilized using an Alpha 1-4 LSCbasic lyophilizer (Christ). *B. oleracea* seeds
13 were grown as described above for the plant material, with 125 µM of Se(IV) and with or without 5·10⁷
14 CFU of *Pseudomonas* sp. T5-6-I amendment. After 14 days growth period, fresh leafs and roots were
15 harvested, pre-frozen at -18 °C and lyophilized as described for the bacterial cells.
16
17
18
19

20 The lyophilized pellets were homogenised with a mortar and pestle and bacterial samples were
21 prepared as such in M8 steel washers with a thickness of 1.4 mm and an inner diameter of 8.6 mm.
22 Leaf samples were prepared as such in M5 steel washers with a thickness of 1.9 mm and inner diameter
23 of 5.4 mm. For the root samples, potato starch was used as a filler. The washers were covered with
24 Scotch tape. Elemental (black, Se⁰) selenium, selenium salts Na₂Se(IV)O₃ (AlfaAesar®), Na₂Se(VI)O₄
25 (AnalaR®) and PbSe (AlfaAesar®) were used as reference compounds for the bacterial samples. For
26 plant material in addition L-selenocysteine (Acros organics) and L-selenomethionine (BioVision) were
27 used. The reference compounds were weighed to optimize the change in the absorption coefficient,
28 mixed with potato starch to make the samples more homogeneous and to increase their total volume.
29 M8 steel washers (thickness 1.4 mm, inner diameter 8.6 mm) were used for the reference compounds.
30
31
32

33 For the bacteria, the spectra were recorded over the energy range of 12.538-12.986 keV divided evenly
34 into 450 steps using Si(953) monochromator in the transmission mode. The acquisition time for the
35 direct beam was 12.5 h and the transmitted beams through bacterial pellets from the treatments with 3
36 mM and 6 mM selenium for 16.5 h and 5.5 h, respectively. The transmission through the reference
37 samples were in the range of 5.5 – 9.0 h per sample. The X-ray tube acceleration voltage was set to 20
38 kV and the current was 10 mA. Samples were positioned at the tube exit and a 20 µm thick Al filter
39 was placed in the beam path before the sample to absorb low energy photons and thus reduce the
40 unnecessary radiation dose to the samples. For the plant material, the spectra were recorded over the
41 energy range of 12.624-12.713 keV divided evenly into 100 steps using Si(953) monochromator in the
42 simultaneous transmission and fluorescence mode. The acquisition time for the direct beam was 14.0 h
43 and in the range of 19.6 – 56.1 h per plant sample. The wide range in the measurement times was due
44 to variation in signal strength between the samples. The X-ray tube acceleration voltage was 20 kV and
45 the current 40 mA. Samples were positioned in front of the detector. The calculation of spectra from
46 the raw instrument data and final visualizations were performed with custom Python scripts. The
47 details of spectra calculation is presented in (Honkanen et al., 2019).
48
49
50
51
52

53 The selenium content of the plant samples was estimated by determining magnitude of Se K edge step
54 in the transmission signal and calculating the corresponding amount of selenium. The compositions of
55 obtained spectra from plants were estimated by fitting linear combinations of measured reference
56 spectra with an ordinary least-squares fit using a Python implementation available at
57 <https://github.com/aripekka/bayesfit>. Utilizing the Bayes' theorem, the (posterior) probability p(H|D)
58 for the hypothesis H to be true when given the data D is
59
60
61
62
63
64
65

1
2
3
4 $p(H|D) \propto p(D|H)p(H)$
5
6

7 where $P(D|H)$ is the probability of obtaining D when H is true and $p(H)$ is the a priori probability of H
8 to be true. This allows us to compare the relative probability of competing models to each other as
9 follows:
10

11
$$p(A|D)/p(B|D) = p(D|A, \lambda_A) / p(D|B, \lambda_B) \sqrt{\det(\Sigma_A)} / \sqrt{\det(\Sigma_B)},$$

12
13

14 where $p(A|D)$ is the (posterior) probability of model A to be true when the data D is known, $p(D | A,$
15 $\lambda_A)$ is the probability to obtain D when model A is true with parameters fitted model parameter λ_A and
16 $\det(\Sigma_A)$ is the determinant of the covariance matrix of λ_A . Definitions are similar for the model B . The
17 given equation is a straightforward generalization of Eq. (4.9) in (Sivia and Skilling 2006) when a
18 priori probabilities are taken equal and the number of fit parameters is the same. To compare how two
19 models explain a group of independent fits, the relative probabilities of single fits are simply multiplied
20 together.
21
22

23 **Protein expression in plant roots and leafs.** The effect of *Pseudomonas* sp. T5-6-I and Se(IV)
24 amendment in the expressed protein profile of *B. oleracea* was examined to identify potentially
25 important proteins involved in Se(IV) metabolism in the studied plants. Total plant protein extracts
26 were examined using HPLC-SEC. The plants were grown with 125 μ M Se(IV) amendment as
27 described above for plant material and proteins from untreated control, *Pseudomonas* sp. T5-6-I
28 treated, Se(IV) and *Pseudomonas* sp. T5-6-I + Se(IV) treated plants were isolated using the TPE Kit
29 (G-Biosciences[®]) method according to the manufacturer's instructions. A protease inhibitor cocktail
30 (G-Biosciences[®] ProteaseArrest-kit) was used in the TPE-I buffer according to the manufacturer's
31 instructions. The extracted protein concentrations were quantified using RED 660[™] Protein Assay (G-
32 Biosciences[®]) according to the manufacturer's instructions. 1:3 diluted total protein extracts in TBE-
33 buffer (TPE Buffer-I, G-Biosciences[®] ProteaseArrest-kit) were used for HPLC-SEC analysis (Symmetry
34 semiprep C18 7.8x300 mm 7 μ m). HPLC-SEC was run in 1M phosphate buffered saline (pH 7.9), with
35 an injection volume of 5 μ L and 20 minutes acquisition time. The UV-VIS spectra were recorded at
36 234 nm, 209 nm and 254 nm.
37
38
39
40
41

42 **Quantification of Se(IV) transfer into the plants.** Batch experiments with $^{75}[\text{Se(IV)O}_3^{2-}]$ radioisotope
43 tracer and gamma spectrometry were used to quantify the transfer and accumulation of selenium into
44 the roots and leafs of *B. oleracea* plants from the growth medium. For these experiments *B. oleracea*
45 plants were grown on MS-salt agar as described above for plant material with 100 Bq of
46 $^{75}[\text{Se(IV)O}_3^{2-}]$ (with 2.7×10^{-8} M stable Se(IV) carrier) and with or without *Pseudomonas* sp. T5-6-I
47 inoculation. After a growing period of two weeks the leaves and roots were harvested and weighed and
48 the plant material was digested using 5 mL (1:50 m/V) of 65% HNO_3 (suprapur). The samples were
49 incubated at room temperature for 2 h after which the samples were centrifuged at 12 000 g for 10
50 minutes and filtered through a 0.2 μ m membrane filter. ^{75}Se concentration was measured from the
51 resulting solutions using NaI(Tl)-gamma spectrometer (Wizard[®] automatic gamma counter,
52 PerkinElmer).
53
54
55

56 **Visualization of Se accumulation in the plants.** Digital autoradiography was used to visualize the
57 location and accumulation density of selenium in dried, $^{75}[\text{Se(IV)O}_3^{2-}]$ treated *B. oleracea* leafs and
58 roots with or without *Pseudomonas* sp. T5-6-I amendments. For these experiments, the plants were
59 dried at room temperature, placed on a Fuji FLA imaging plate and exposed for six days in a lead
60
61
62

1
2
3
4 shielded film cassette. The exposed FLA plate was thereafter scanned using Fujifilm FLA-5100
5 scanner with Aida Image analysis software. In addition, X-ray microtomography (μ CT) and X-ray
6 nanotomography (nanoCT) imaging methods were used to visualize changes in tissue density
7 properties (absorption contrast) in response to applications with stable selenium (Se(IV), 125 μ M) in
8 the lyophilized (Alpha 1-4 LSCbasic lyophilizer, Christ) *B. oleracea* leaves (μ CT) and roots (nanoCT).
9 This enabled a higher image resolution in tissues in comparison to the digital autoradiography.
10 Confocal microscopy was used to examine the changes in the root morphology of *B. oleracea* in
11 response to Se(IV) (125 μ M) and bacteria treatments from fresh samples dyed with propidium iodide
12 (PI) just prior to imaging. Transmission electron microscopy (TEM) was in addition used to examine
13 the possible accumulation of bacteria and selenium in the leaves of plants treated with 125 μ M Se(IV)
14 and *Pseudomonas* sp. T5-6-I. For the TEM experiments the plants were grown in Se(IV) containing
15 MS-agar plates as described above. Freshly collected leaves were fixed in 2% glutaraldehyde for 2
16 hours and cut into 1cm x 1cm pieces. Cells were dehydrated through an ethanol series and then
17 embedded in Taab hard epon and polymerized at 60 °C. Thin sections were cut using Leica ultracut
18 UCT ultramicrotome (Leica Mikrosysteme GmbH, Austria) and collected on single-slot copper grids.
19 Section thickness of 60 nm was used for the morphological examinations. After double staining with
20 uranyl acetate and lead citrate, the sections were examined using FEI Tecnai F20 at 200 kV under
21 standard operating conditions.
22
23
24
25
26

27 **Statistical analyses.** To study the statistical difference in the Se-accumulation between the
28 differentially treated *B. oleracea* plants using $^{75}[\text{Se(IV)O}_3^{2-}]$ radioisotope tracers, the analysis of
29 variance was performed using OriginPro 8.6 (OriginLab®) and one-way ANOVA at the $p < 0.05$ level.
30 Prior to analysis, Shapiro-Wilk test ($p < 0.05$) was used to examine the normality of the data, and as the
31 normality hypotheses were rejected, log transformed data was used for the one-way ANOVA tests.
32
33

34 3. Results

35 3.1. Bacterial growth under Se(IV) stress

36
37
38
39 The effect of Se(IV) on growth of *Pseudomonas* sp. T5-6-I was tested using 1% Tryptone growth broth
40 amended with 6 mM Se(IV) and viable cells were counted using PCA plate count agar and measuring
41 the absorbance of the cultures at 600 nm (Figure 1). In these experiments, Se(IV) was found to
42 decrease the growth rate of the *Pseudomonas* sp. T5-6-I (Figure 1B). In the cultures treated with Se(IV)
43 the plateau phase was reached before 216 h while the untreated control cultures reached the plateau
44 phase already before 96 h.
45
46
47
48
49
50
51
52
53
54
55
56
57
58
59
60
61
62
63
64
65

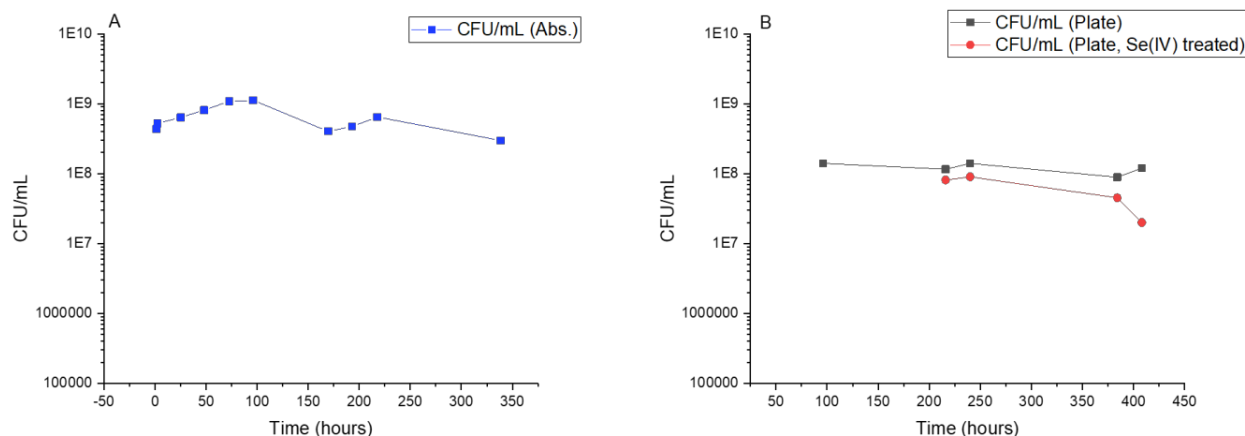


Figure 1. The effect of Se(IV) on bacterial growth of *Pseudomonas* sp. T5-6-I on 6 mM Se(IV) amended 1% Tryptone solution. A) 600 nm absorbance based CFU/mL obtained from the untreated control cells. B) Grey = Viable cell counts (CFU/mL) obtained from the PCA plates of untreated cells, Red = Viable cell counts (CFU/mL) obtained from the PCA plates of Se(IV) treated cells. At time = 72h, the cell counts both on Se(IV) treated plates as well as on plates without Se(IV) amendment were 0 CFU/mL, At time = 96 h, the cell counts on Se(IV) treated plates was 0 CFU/mL

3.2. Selenium speciation in *Pseudomonas* sp. T5-6-I

The Se K edge XANES spectra were recorded for *Pseudomonas* sp. T5-6-I cells grown in 1% Tryptone amended with 3mM and 6 mM Se(IV) together with the reference compounds (Figure 2) to study the speciation of selenium in the bacterial cells. The absorption coefficient from 6 mM Se(IV) bacteria samples followed closely that of the black (vitreous, Se⁰) selenium reference. The spectrum recorded in 3 mM Se(IV) amended bacteria was similar within the statistical accuracy.

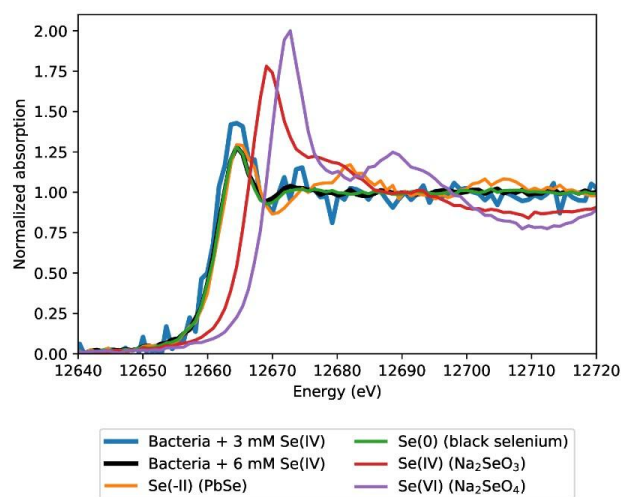


Figure 2. Se K edge of accumulated selenium in *Pseudomonas* sp. T5-6-I after incubation in presence of Se(IV) (3 mM and 6 mM concentration) together with reference compound spectra. The signal from the bacteria samples follow closely that of elemental Se.

3.3. Effect of *Pseudomonas* sp. T5-6-I on Se uptake by *B. oleracea*

B. oleracea showed increased transfer of $^{75}\text{Se(IV)}$ to the roots, leaves and stems in the *Pseudomonas* sp. T5-6-I treated samples (Figure 3A) compared to the plants with only $^{75}\text{Se(IV)}$ amendment but without *Pseudomonas* sp. T5-6-I inoculation seen as increased $^{75}\text{Se(IV)}$ signal (red colour in figure 3A) in the autoradiography images. Furthermore, ^{75}Se seemed rather evenly distributed throughout the *Pseudomonas* sp. T5-6-I treated plants (red colour in Figure 3A). In the μCT studies, leaves of Se supplemented plants with (Figure 4C) and without (Figure 4B) of *Pseudomonas* sp. T5-6-I inoculation showed increased absorption contrast attenuation (visualized in green signal) compared to the control leaf (Figure 4A). The green signal appeared to be evenly distributed throughout the leaves of both Se and Se+bacteria supplemented plants. In contrast, only the leaf veins of control leaves showed higher density (likely due to lignified vascular cells). In the roots of *B. oleracea*, visualized using nanoCT, (Figures 4D – E), increased tissue density (pink and yellow signal) was seen mainly in the *Pseudomonas* sp. T5-6-I inoculated and Se(IV) treated sample (F), compared to the control root (D) and Se supplemented sample without *Pseudomonas* sp. inoculation (E).

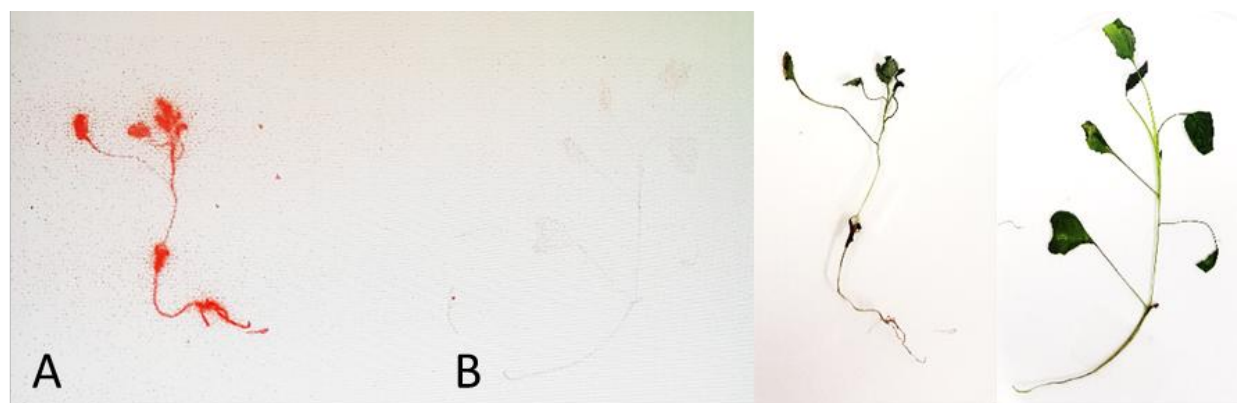


Figure 3. A) *B. oleracea* grown on MS-salt agar labelled with $^{75}[\text{Se(IV)}\text{O}_3^{2-}]$ with *Pseudomonas* sp. T5-6-I inoculation. B) *B. oleracea* grown on MS-salt agar labelled with $^{75}[\text{Se(IV)}\text{O}_3^{2-}]$ without *Pseudomonas* sp. T5-6-I. On the right photographs of the plants used for autoradiograms. Data are representative of at least three biological replicates.

1
2
3
4
5
6
7
8
9
10
11
12
13
14
15
16
17
18
19
20
21
22
23
24
25
26
27
28
29
30
31
32
33
34
35
36
37
38
39
40
41
42
43
44
45
46
47
48
49
50
51
52
53
54
55
56
57
58
59
60
61
62
63
64
65

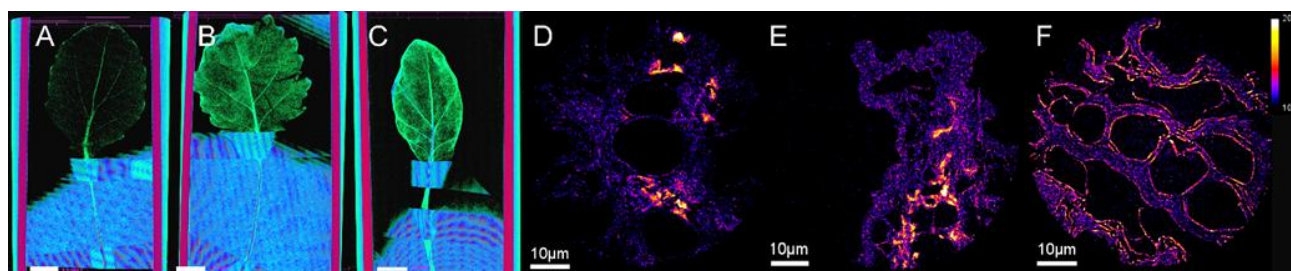


Figure 4. Leaves (A, B, C) and roots (D, E and F) of vacuum dried *B. oleracea* visualized using μ CT (A, B and C) and nanoCT (D - F). In (A) a leaf of a plant without Se(IV) amendment grown on the MS-salt agar is shown (control). In (B) a leaf of a plant grown in Se(IV) amended MS-salt agar. In (C) leaf grown with Se+*Pseudomonas* sp. T5-6-I inoculation. Adsorption contrast attenuation visualized in green signal. The light blue colour under the leaves comes from the paper on which the samples were attached to. Red vertical lines are plastic of the tubes in which the samples were imaged. In (D) a control root without Se(IV) amendment, (E) Se(IV) treated *B. oleracea* root and in (F) Se+*Pseudomonas* sp. T5-6-I inoculated root sample.

In the tests using $^{75}\text{[Se(IV)O}_3^{2-}]$ and gamma spectroscopy on average 130% (2.3-fold) more selenium was translocated to the *B. oleracea* plants grown with *Pseudomonas* sp. T5-6-I, compared to the plants grown without *Pseudomonas* sp. T5-6-I (Figure 5). Selenium was especially accumulated to the roots. In the plants grown without *Pseudomonas* sp. amendment, on average 3-fold more selenium was found in the roots, compared to the leaves. Even more notably difference between selenium concentrations found in the roots and leaves was found in the samples inoculated with $5 \cdot 10^7$ CFU *Pseudomonas* sp. T5-6-I strain. In these samples on average 12-fold more selenium was found in the roots, compared to the concentrations observed in the leaves. However, it is impossible to distinguish whether selenium was accumulated onto the bacteria residing on the root surfaces, adsorbed onto root surfaces or translocated inside the root tissue. Nevertheless, since the roots were rinsed several times before extraction of selenium, selenium was either; i) tightly bound on root surfaces, or ii) translocated inside the root tissue. Addition of 100 Bq of ^{75}Se had no evident effect on the phenotype of *B. oleracea*.

Based on the analysis of variance (ANOVA), the inoculation of $^{75}\text{Se(IV)}$ treated plants with *Pseudomonas* sp. T5-6-I, significantly enhanced selenium accumulation in the roots of *B. oleracea* plants. The differences in the Se accumulation on the roots between *Pseudomonas* sp. T5-6-I inoculated plants, and plants without *Pseudomonas* sp. addition was found statistically significant at the $p < 0.05$ level ($F_{\text{crit}} = 4.7$, $F = 10.5$, $p = 0.007$). However, in the case of leaves, statistically significant difference between *Pseudomonas* sp. treated plants and plants without bacteria inoculation could not be shown.

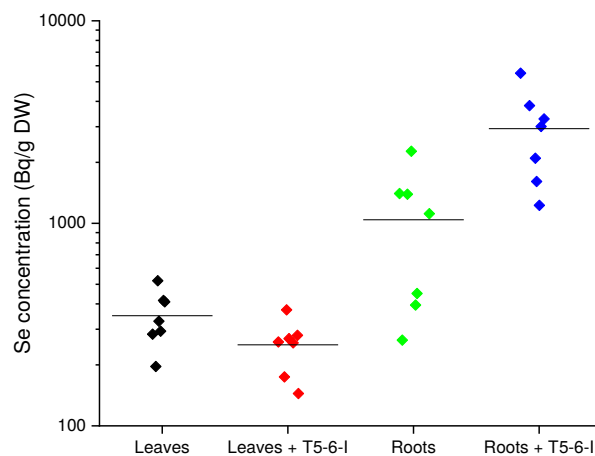


Figure 5. Selenium concentration in the leaves and roots of *B. oleracea* grown in $^{75}\text{[Se(IV)O}_3^{2-}]$ amended MS-agar without bacteria (black and green) and with *Pseudomonas* sp. T5-6-I inoculation (red and blue).

Transmission electron microscopy (TEM) showed small, <50 nm, dense granules in the leaf cells of *B. oleracea* grown with *Pseudomonas* sp. T5-6-I and 125 μM of Se(IV) (Figures 6B-D). Similar structures were not seen in plants with Se(IV) but without *Pseudomonas* sp. T5-6-I inoculation (Figure 6A).

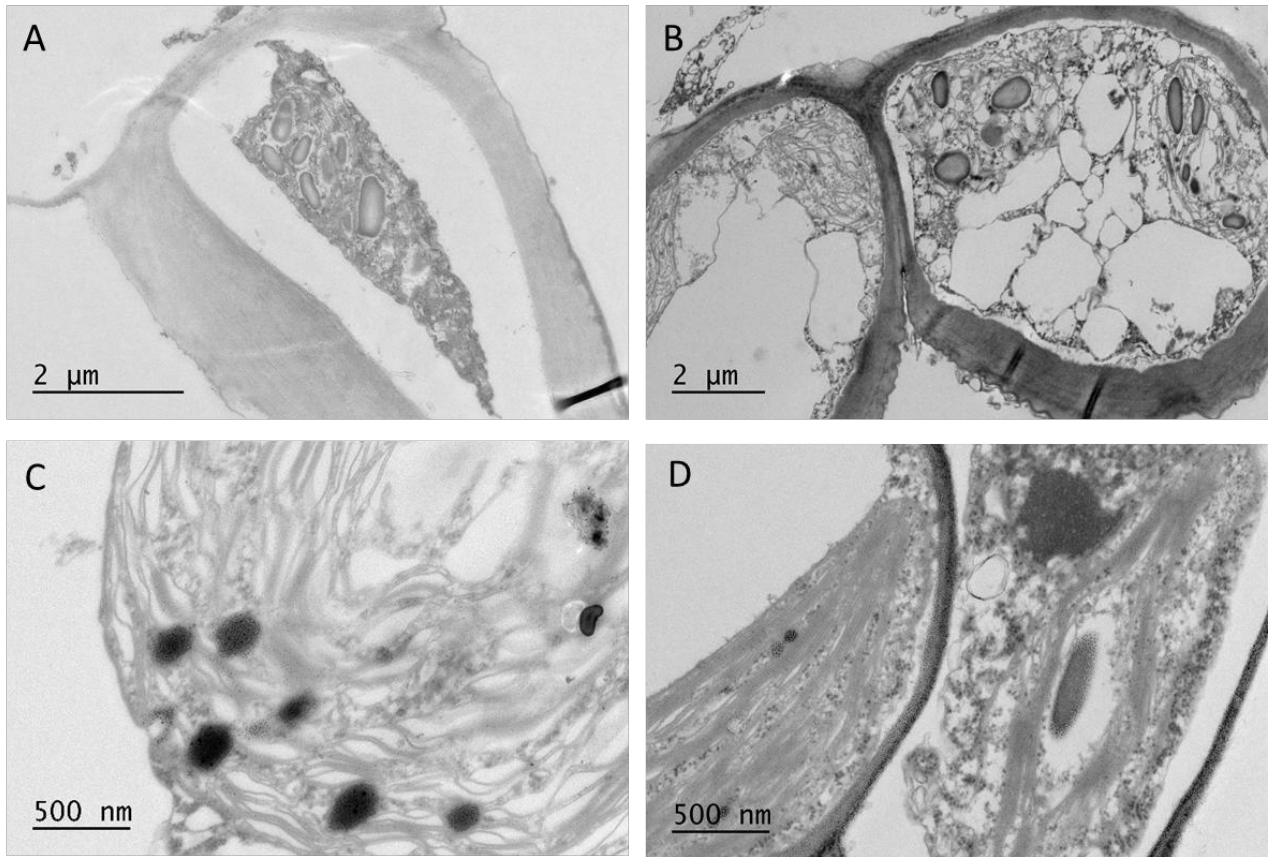


Figure 6. Leaves of *B. oleracea* grown with 125 μM Se(IV) (A), and 125 μM Se(IV) and $5 \cdot 10^7$ CFU *Pseudomonas* sp. T5-6-I (B – D), visualized using transmission electron microscopy (TEM). Data are representatives of three biological replicates.

X-ray absorption near edge spectroscopy (XANES) was used to further examine the speciation of selenium in the *B. oleracea* leaves and roots. The Se signals from the samples fall between the elemental Se and Se(IV) and followed closely the seleno-amino acid references (Figure 7A). The details of Se speciation were investigated by making two component least squares linear combination fits of the reference compounds to the sample spectra. Reference pairs Se:SeO₃, Se-Cys:Se-Met, Se:Se-Met, Se:Se-Cys, Se-Cys:SeO₃ and Se-Met:SeO₃ were fitted (Appendix 1, Table A1 and A2). Of the fitted pairs Se:Se-Cys and Se-Met:SeO₃ lead to negative fractions for Se and SeO₃, respectively, indicating non-physical fits and were rejected from the subsequent analysis. Se:SeO₃ fits were found to fit the data very poorly, which was indicated by extremely small relative probabilities and visual mismatch around 12663 eV. Of tested pairs, the data was best explained by Se-Cys:Se-Met (Figure 7B), representing 2.4 times more probable explanation to the bacteria-inoculated data than Se:Se-Met pair. As XANES is most sensitive to the local structure of the absorbing element, the compounds containing selenium in the structural motif C-Se-C, such as selenomethionine, methylselenocysteine, or selenocystathione, are spectroscopically nearly indistinguishable (Pickering et al. 1999; Lindblom et al. 2012; Wang et al. 2015). The results thus indicate that selenium found in leaves and roots is mainly in organic C-Se-H and C-Se-C bonds. Together with the fact that in the presence of the bacteria, the fit values tended to give more emphasis on components with absorption edge at lower energies, the

Bayesian analysis suggests that while most of the observations can be sufficiently explained with the seleno-amino acids only, the data cannot confidently reject the possible presence of small amounts of more reduced Se compounds, such as Se^0 granules, when grown in the presence of *Pseudomonas* sp. T5-6-I.

Based on XANES experiments, Se levels of 300-400 mg/kg DW were found in the roots, compared to 40-50 mg/kg DW in leaves (Appendix 1, Table A1 and A2). However, no significant differences in the concentrations were observed between the samples grown with or without *Pseudomonas* sp. T5-6-I.

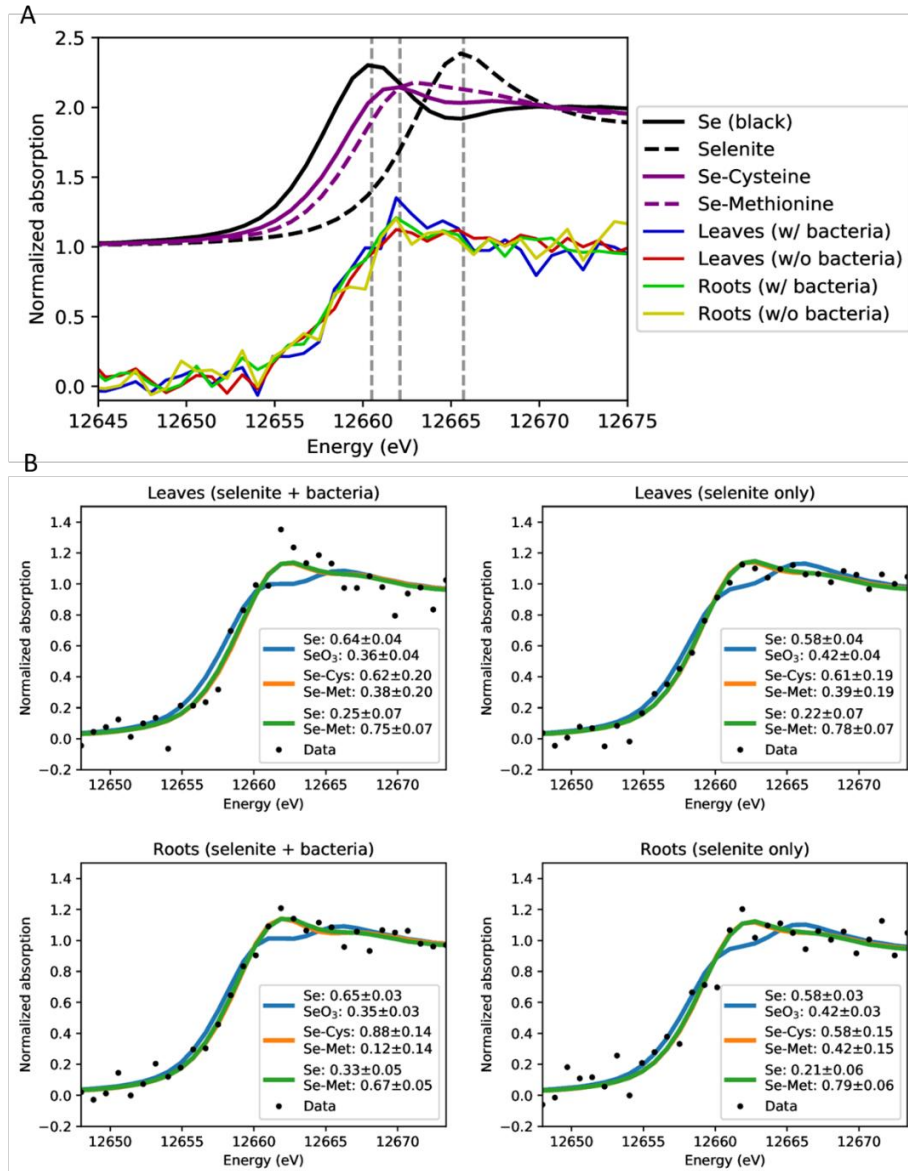
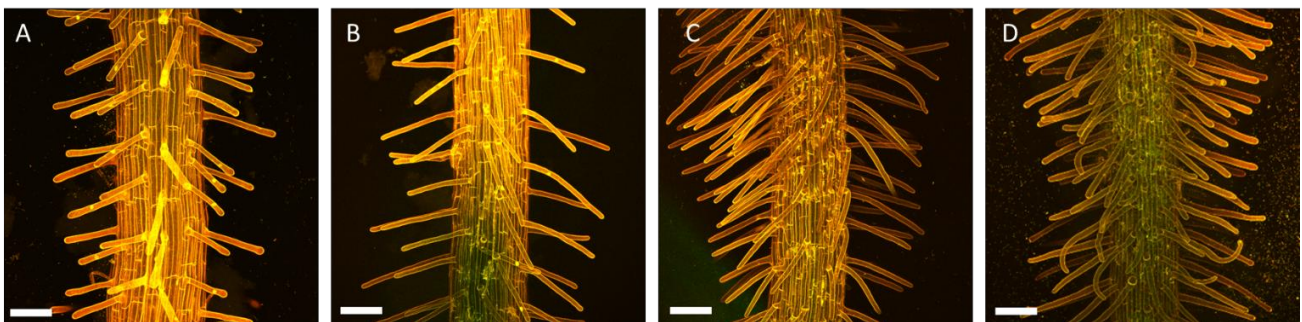


Figure 7. Fitted XANES spectra of *B. oleracea* leaves and roots with 125 μM Se(IV) amendment and with or without *Pseudomonas* sp. T5-6-I inoculation. A) Combined absorption spectra of Se^0 (Se(Black)), Se(IV) (selenite), Se-Cysteine , Se-methionine , and the leaves and roots of *B. oleracea*

1
2
3
4 grown with 125 μ M Se(IV) amendment and with/without *Pseudomonas* sp. T5-6-I inoculation. B) Fit
5 with Se:SeO₂ pair, with Se-Cys:Se-Met pair and with Se:Se-Met pair.

6
7 To better understand the effects of Se(IV) amendment and *Pseudomonas* sp. T5-6-I inoculation in *B.*
8 *oleracea*, root hair formation in Se(IV) and bacteria treated samples was investigated using confocal
9 microscopy. No clear differences were observed in the root hair density in the plants grown with 125
10 μ M Se(IV) amendment (Figure 8B) compared to the plants with no Se(IV) present (Figure 8A) in the
11 MS-growth agar. However, a notably increased root hair density was seen in *Pseudomonas* sp. T5-6-I
12 amended plants (Figure 8C) compared to the control plants without bacteria (Figure 8A). Similarly, in
13 Se(IV) amended plants with *Pseudomonas* sp. T5-6-I inoculation (Figure 8D) a clear increase in the
14 root hair density was observed, when the root morphology was compared with plain Se(IV) amended
15 plants (Figure 8B).
16
17



38
39
40
41
42
43
44
45
46
47
48
49
50
51
52
53
54
55
56
57
58
59
60
61
62
63
64
65

Figure 8. Confocal microscopy images of roots of *B. oleracea* grown on MS-salt agar, Control (no additions) (A), with Se(IV) addition (B), with *Pseudomonas* sp. T5-6-I addition (C) and Se(IV) + *Pseudomonas* sp. T5-6-I additions (D). A significantly increased root hair density is seen in *Pseudomonas* sp. T5-6-I amended sample (C), compared to control plant (A). Similarly in a Se(IV) amended sample with *Pseudomonas* sp. T5-6-I (D) a clear increase in the root hair density is seen, when comparing with plain Se(IV) amended sample (B). Scale bars 50 μ m.

3.4. Protein profiles in Se(IV) and *Pseudomonas* sp. T5-6-I treated plants

The profile of expressed proteins in response to Se(IV) and *Pseudomonas* sp. T5-6-I amendment in the *B. oleracea* plants was investigated to identify potentially important proteins involved in Se(IV) metabolism. Total protein fractions were isolated from the plants grown with Se(IV) and/or *Pseudomonas* sp. T5-6-I and the proteome was analyzed using HPLC-SEC (Table 1). Several differences in the HPLC-SEC protein profiles generated by Se(IV) and *Pseudomonas* sp. T5-6-I inoculation were observed in *B. oleracea*. A protein of ~31 kDa, was observed in the plants treated with Se(IV) with or without *Pseudomonas* sp. T5-6-I inoculation. In the *B. oleracea* plants treated with only *Pseudomonas* sp. T5-6-I a 28 kDa protein was also expressed. In addition, in the *Pseudomonas* sp. T5-6-I inoculated *B. oleracea* plants treated with Se(IV) additional low molecular weight proteins, corresponding to a molecular weight of ~8.5 kDa were observed. Interestingly, higher molecular weight proteins ~240 kDa, ~150 kDa and ~85 kDa were only recorded for the untreated control *B. oleracea*.

Table 1. Proteins (calculated molecular weight (MW), kDa) expressed in *B. oleracea* in response to Se(IV) and *Pseudomonas* sp. T5-6-I treatments obtained using HPLC-SEC and total protein fractions.

Peak position	CTRL MW (kDa)	Se MW (kDa)	<i>Pseud.</i> MW (kDa)	Se+ <i>Pseud.</i> MW (kDa)
1	239.8			
2	149.6			
3	85.0			
4	77.3	77.5	77.3	77.0
5	62.3	62.1		
6	52.5	51.9	52.9	52.8
7	48.3	48.0	48.2	48.2
8	38.0	38.0	37.8	37.5
9	34.3	34.2	34.2	33.9
10		31.5	31.9	30.8
11			28.0	
12	20.8	20.8	20.8	20.6
13	18.9	18.9	18.9	18.8
14	17.0	17.0	17.0	17.0
15				14.8
16	13.4	13.2	13.1	13.4
17	11.4	11.5	11.4	11.4
18	9.2			
19				8.5
20				8.3

4. Discussion

We have previously shown that the *Pseudomonas* sp. strain T5-6-I used in this study was able to remove Se(IV) from nutrient solutions depending on incubation time and temperature (Lusa et al. 2015). We also observed intracellular Se-aggregates using TEM and EDX after Se(IV) exposure in this bacterium and concluded that accumulation and transport was likely metabolism-dependent and suggested two different transport mechanisms for Se(IV) uptake: (1) A low affinity transport system up-regulated by NO_3^- , NO_2^- or SO_4^{2-} , and (2) a Se(IV) regulated transport system (Lusa et al. 2017). In the present study, we tested this bacterium further in order to identify the speciation of selenium in the bacterium after Se(IV) introduction using XANES, as well as to test its effects on Se accumulation and speciation in *B. oleracea* plants.

The effect of Se(IV) exposure on growth of *Pseudomonas* sp. T5-6-I was tested by adding 6 mM of selenite to the bacterial culture at the beginning of the growth phase and compared the viable cell counts on these cultures to the bacterial cultures grown without Se(IV) amendment. The presence of Se(IV) induced a notable increase in the lag phase duration by approximately 120 hours. Similar retardation on the lag phase after Se(IV) exposure has been previously described e.g. for *Ralstonia*

1
2
3
4 *metallidurans* (CH34) (Roux et al. 2001). However, in our study after the increased lag phase, the cell
5 numbers in the cultures exposed to Se(IV) reached the number of stationary phase cells in the control
6 cultures without Se(IV), after a rapid exponential growth phase. Previously we observed 6 mM Se(IV)
7 amendment to decrease ⁷⁵Se accumulation in the bacterial cells to approximately one tenth of the
8 accumulation observed after 0.3 mM Se(IV) amendment using 7 days incubation (Lusa et al. 2017).
9 Based on the previous results and the results obtained in the present study, the decrease in the ⁷⁵Se
10 accumulation is most probably caused by the increase in the lag phase after increased Se(IV) exposure.
11 This is in good line with the results of Sarret et al. (2005), which reported that the accumulation of
12 selenite was minimal in *R. metallidurans* during the prolonged lag phase after increased Se(IV)
13 exposure and that selenium was not accumulated until the late exponential and stationary phases of the
14 bacterial growth. The growth of *Bifidobacterium animalis* was also significantly reduced by increasing
15 Se(IV) concentrations (0.06 mM) compared to unsupplemented cultures (Zhang et al. 2008). In
16 contrast, the biomass of *Enterococcus* species has been reported to increase with increasing Se(IV)
17 concentrations of 0.06 to 0.36 mM (Pieniz et al. 2011). Concurrently, Se(IV) bioaccumulation was
18 reported to increase (Pieniz et al. 2011). Selenium may accumulate in bacterial cells either in organic,
19 inorganic or elemental form or as a mixture of these forms, and the varying accumulation pathways
20 may further affect cell growth and ultimate cell density in the growth solutions (Zhang et al. 2009,
21 Pieniz et al. 2011). In our study, the XANES analyses showed that *Pseudomonas* sp. T5-6-I reduced
22 Se(IV) into elemental Se⁰. In e.g. *E. coli*, Se(IV) reduction can follow a nonenzymatic pathway, which
23 comprises of several organoselenium intermediates (Turner et al. 1998). The fact that Se⁰ dominated in
24 the *Pseudomonas* sp. T5-6-I after Se(IV) introduction, suggests that selenite is accumulated mainly
25 through the dissimilatory detoxification pathway in this bacterium. Certain microorganisms are able to
26 obtain metabolic energy from dissimilatory reduction processes, and in the environment, microbial
27 Se(IV) reduction is an important process through which toxic soluble selenium oxyanionic species are
28 removed from water and soil solutions (Eswayah et al. 2016, Nancharaiah and Lens 2015). Various
29 electron donors, including sugars, alcohols and organic acids can be utilized in the dissimilatory
30 reactions (Astratinei et al 2006, Zhang et al. 2008, Kashiwa et al. 2000, Chung et al. 2006). From the
31 bioremediation point of view, dissimilatory selenium reduction is expected to be more important in
32 contrast to the assimilatory reduction. This is because of the higher selenium concentrations passing
33 through the dissimilatory pathway (Eswayah et al. 2016). For this reason, especially the
34 microorganisms utilizing the dissimilatory reduction of selenium could be used as profitable means for
35 the remediation of selenium polluted areas (Eswayah et al. 2016). In the environment, the reduced
36 insoluble Se⁰ is considered less harmful compared to the soluble oxyanionic forms of Se(IV) and
37 Se(VI). The aqueous Se(IV) and Se(VI) species could, however, be immobilized using Se-oxyanion-
38 reducing bacterial strains, especially suitable for bioremediation of aquatic environments. The
39 separation and removal of the bacteria containing the reduced Se⁰ from solid soils and sediments would
40 however be more challenging. Therefore, we also tested the effect of the Se-oxyanion-reducing
41 *Pseudomonas* sp. T5-6-I strain on selenium uptake by plants, in order to evaluate its potential use in the
42 bacteria-based phytoremediation of toxic selenium oxyanionic species from soils. Generally,
43 phytoremediation for soil cleaning is considered very beneficial as it does not reduce the fertility of the
44 soil, which is a typical problem with other engineered methods (e.g. thermal soil remediation,
45 encapsulation and air sparging) used for soil clean-up (Robinson et al. 2000, Pilon-Smits and Freeman
46 2006). Phytoremediation can be coupled to biofortification, in which the selenium enriched plant

1
2
3
4 material will be decomposed in agricultural soil and used further for the enrichment of food products
5 with Se (Schiavon and Pilon-Smits 2017).
6

7
8 In the plant-uptake experiments, we observed *Pseudomonas* sp. T5-6-I to promote root hair
9 development in *B. oleracea*, and in addition, this bacterium affected selenium uptake in the plants after
10 Se(IV) exposure. Gammasspectrometry showed that 130% more activity was translocated to the *B.*
11 *oleracea* plants treated with $^{75}\text{Se(IV)}$ and *Pseudomonas* sp. T5-6-I compared to the samples receiving
12 only $^{75}\text{Se(IV)}$ (n=14). The increase in the ^{75}Se concentrations after *Pseudomonas* sp. T5-6-I
13 inoculation were most notable in the roots, compared to the leaves in young seedlings after a two weeks
14 growth period. A 7.5 – 12-fold higher concentration of selenium was found accumulated to the roots
15 compared to the leaves in the *Pseudomonas* sp. inoculated samples. Previously, rhizospheric bacteria
16 have been reported to enhance selenium accumulation e.g. in *Brassica juncea* (de Souza et al. 1999).
17
18

19
20 Selenium may have beneficial effects on plants and several studies have shown that at low doses Se
21 protects the plants from variety of abiotic stresses including cold (Chu et al., 2010), drought
22 (Hasanuzzaman and Fujita, 2011), and metal stress (Kumar et al., 2012, Pandey and Gupta, 2015).
23 However, selenium toxicity (selenosis) arises in plants after protective concentrations are exceeded
24 (Gupta and Gupta 2017). Selenosis is caused by two distinctive mechanisms, i) by inducing oxidative
25 stress and ii) by formation of malformed selenoproteins. Malformed Se-proteins are caused by the
26 misincorporation of SeCys/SeMet in place of Cys/Met in an amino acid chain. As compared to SeMet,
27 substitution of SeCys is more detrimental for the protein function, due to the important roles of cysteine
28 residues in the protein structure (Gupta and Gupta 2017). Cysteine residues are essential for the
29 formation of disulphide bridges, enzyme catalysis and metal binding sites. The substitution of cysteine
30 by selenocysteine distorts the tertiary structure of a protein due to the formation of diselenide bridges
31 instead of disulphide ones (Hondal et al., 2012). In addition, the enzyme kinetics can be altered because
32 of changes in the redox potential. Previously, e.g. Se-MeSeCys (Selenomethylselenocysteine) has been
33 described in SeMet enriched *Brassica* plants (Gupta and Gupta 2017). In addition, Se-MeSeCys and
34 SeMet and selenate were detected in shoots, whereas selenate, selenite and SeMet were found in the
35 roots of these plants (Gupta and Gupta 2017). In our study, the XANES analyses showed that Se was
36 most likely present in H-Se-C and C-Se-C bonds in the *B. oleracea* leaves and roots after Se(IV)
37 amendment and the presence of selenite, selenate or Se^0 was not supported by the data. Furthermore, in
38 our study, statistically significant differences in the selenium speciation, which could explain the
39 increased accumulation in the roots compared to the leaves, could not be observed in the XANES
40 spectra obtained from the differently treated plants.
41
42
43
44
45
46

47 Depending on the concentrations and form of selenium, its uptake varies among plant species and is
48 affected by the activity of membrane transporters, the developmental phase of the plant, as well as
49 physiological conditions and accompanying substances (Zhao et al., 2005, Li et al., 2008). Selenium is
50 expected to enter the plant cells as selenite or selenate through sulphate transporters and to thereafter be
51 translocated to leaves where it is metabolized in plastids via the sulfur assimilation pathway into SeCys
52 or SeMet (Gupta and Gupta 2017). In our study, selenium was found to be most likely incorporated in
53 C-Se-C and C-Se-H bonds (as in SeMet and SeCys) in the plant cells after Se(IV) introduction. This
54 would well fit the sulfur assimilation pathway for Se(IV). As somewhat increased uptake of selenium
55 (^{75}Se) was observed in the bacteria-inoculated *B. oleracea* plants, also other mechanisms could
56 however be expected. This is because these bacteria were shown to reduce Se(IV) into Se^0 and based
57 on previous studies, plants are known to be unable to take up colloidal elemental Se^0 (White and
58 Broadley 2009). The changes observed in the *B. oleracea* protein profiles after Se(IV) and
59
60
61
62
63
64
65

1
2
3
4 *Pseudomonas* sp. treatments could be generated by these mechanisms. However, further
5 characterization of the proteins is needed, to confirm their role in selenium accumulation. Previously
6 high fractions (up to 35% of all selenium) of elemental reduced Se⁰ has been reported in roots of
7 *Astragalus bisulcatus* (*Fabaceae*), which was suggested to be produced by microbial endophytes
8 (Lindblom et al. 2012, Lindblom et al. 2018). Reduced Se⁰ was observed especially in the *A. bisulcatus*
9 nodules and roots inoculated with Se⁰-producing fungi *Alternaria astragali* or *A. tenuissima*.
10 Furthermore, e.g. bacteria belonging to the genera *Bacillus*, *Pseudomonas*, *Pantoea*, *Staphylococcus*,
11 *Paenibacillus*, *Advenella*, *Arthrobacter* and *Variovorax* are known endophytes from Se
12 hyperaccumulators *Stanleya pinnata* (*Brassicaceae*) and *A. bisulcatus* (Sura-de Jong et al. 2015).
13 These bacteria are also able to reduce Se(IV) to elemental Se⁰ and have plant growth promoting
14 properties but their effect on plant Se accumulation has not been reported (Sura-de Jong et al. 2015).
15 However, in our study Se⁰ was not observed in the significant amounts in the *B. oleracea* plants after
16 Se(IV) treatment nor Se(IV) + *Pseudomonas* sp. T5-6-I treatments using XANES. In addition, no
17 structures resembling endophytic bacterial cells were found in the plant cells using TEM, although we
18 observed small (<50 nm) dense granules in the leaf cells of *B. oleracea* grown with *Pseudomonas* sp.
19 T5-6-I and Se(IV), which were not seen in plants without Se(IV) and *Pseudomonas* sp. T5-6-I
20 amendments. At the same time, the root hair density was clearly increased in the *Pseudomonas* sp.
21 inoculated plants, increasing the surface area available for selenium uptake by the plants. Thus, it
22 appears that *Pseudomonas* sp. T5-6-I forms favorable symbiosis with the plants and contributes to the
23 Se accumulation observed in *B. oleracea*, even though endophytic interactions could not be verified.
24 Our results could not exhaustively conclude whether selenium is initially translocated to the plants as
25 reduced Se⁰ species inside the bacterial cells, or if the bacteria-plant interactions on the root surfaces
26 change the initial selenium speciation enabling increased uptake to the plant through increased uptake
27 surface area and increased expression of proteins involved in the selenium metabolism. Nevertheless,
28 our findings demonstrate the potential for Se⁰-producing (symbiotic) bacteria to affect plant properties
29 relevant for phytoremediation or biofortification. Facultative symbionts may also be beneficial in
30 bioremediation and biofortification, due to their ability to turn toxic oxyanionic form of selenium,
31 Se(IV), into less-toxic (or even metabolically beneficial) forms and to increase selenium(IV)
32 accumulation in the plants.
33
34
35
36
37
38
39
40
41

42 5. Conclusions

43
44 The bacterial growth rate in *Pseudomonas* sp. T5-6-I was affected by Se(IV) amendment and Se(IV)
45 increased the duration of the lag phase of the growth. However, following rapid exponential growth,
46 growth rate promptly reached the growth rate observed in the control cells without Se(IV) amendment.
47 Based on the following XANES measurements, *Pseudomonas* sp. T5-6-I effectively reduced Se(IV)
48 into elemental Se⁰ under oxic conditions. In addition, this *Pseudomonas* sp. strain increased selenium
49 (⁷⁵Se(IV)) accumulation in *B. oleracea*. However, this bacterium was not found to affect the following
50 selenium speciation in the *B. oleracea* plants. We conclude that the increase in selenium plant-uptake
51 after *Pseudomonas* sp. T5-6-I inoculation may, at least partly, be caused by the increased root-hair
52 growth, which was observed in the *B. oleracea* plants after *Pseudomonas* sp. T5-6-I inoculation.
53 This study shows that Se(IV) tolerant, Se⁰ producing soil bacteria isolated from boreal, harsh bog
54 environment, can influence Se accumulation in a common crop plant *B. oleracea* (kale). This feature
55 could be highly beneficial for the further development of phytoremediation and biofortification
56 applications, especially as these bacteria seem not to distinguish between their habitat or plant partner.
57
58
59
60
61
62
63
64
65

Conflict of interest

The authors declare that there is no conflict of interest regarding the publication of this article.

Author Contributions

Merja Lusa: Conceptualization, Methodology, Validation, Formal Analysis, Investigation, Writing – Original Draft, Writing – Reviewing and Editing, Supervision, Project Administration. Hanna Help-Rinta-Rahko: Methodology, Formal Analysis, Investigation, Writing – Reviewing, Ari-Pekka Honkanen: Methodology, Formal Analysis, Investigation, Writing-Reviewing, Jenna Knuutinen: Investigation, Joni Parkkonen: Investigation, Dominika Kalasová: Investigation, Malin Bomberg: Conceptualization, Methodology, Writing- Reviewing and Editing.

Funding

The authors acknowledge the financial support for the project “Biosorption and bioaccumulation of heavy metals and radionuclides - use of environmental bacteria in the bioremediation of mining wastewaters” from KAUTE foundation. Hanna Help was supported by Academy of Finland (grant 1295696). Ari-Pekka Honkanen was funded by University of Helsinki Doctoral Program in Materials Research and Nanosciences (MATRENA). Dominika Kalasova acknowledges the project CEITEC 2020 (LQ1601) with financial support from the MEYS CR under the National Sustainability Programme II and Ceitec Nano+ project, CZ.02.01/0.0./0.0./16_013/0001728 under the program OP RDE

Acknowledgements

The authors acknowledge Mervi Lindman from Electron Microscopy Unit, Institute of Biotechnology, University of Helsinki for technical assistance in TEM imaging.

Appendix 1

Table A1: Weighed masses of samples and estimated Se concentrations. A conservative 20 % error based on the statistical accuracy of data was used in the estimation.

Sample	Dry mass (mg)	Se K edge steps	Estimated Se mass (µg)	Se concentration (mg/kg DW)
Leaves + T5-6-I	74.5	0.0019	3.2 ± 0.6	43 ± 9
Leaves	75.4	0.0024	4.0 ± 0.8	53 ± 11
Roots + T5-6-I	12.5	0.0025	4.2 ± 0.8	340 ± 70
Roots	9.1	0.0022	3.7±0.7	410 ± 80

Table A2: Fitted fractions of two component reference fits and their relative likelihoods to explain the observed data. Se:Se-Cys and Se-Met:SeO₃ fits lead to unphysical fit parameters and are thus omitted from the table.

Fitted references	Leaves + T5-6-I	Leaves	Roots + T5-6-I	Roots	Relative probability to explain bacteria samples	Relative probability to explain non-bacteria samples	Relative probability to explain all the samples
Se	0.64 ± 0.04	0.58 ± 0.04	0.65 ± 0.03	0.58 ± 0.03	7.3 x 10 ⁻¹³	2.3 x 10 ⁻⁷	1.7 x 10 ⁻¹⁹
SeO ₃	0.36 ± 0.04	0.42 ± 0.04	0.35 ± 0.03	0.42 ± 0.03			
Se-Cys	0.6 ± 0.2	0.6 ± 0.2	0.88 ± 0.14	0.58 ± 0.15	1	1	1
Se-Met	0.4 ± 0.2	0.4 ± 0.2	0.12 ± 0.14	0.42 ± 0.15			
Se	0.25 ± 0.07	0.22 ± 0.07	0.33 ± 0.05	0.21 ± 0.06	0.42	0.011	0.048
Se-Met	0.75 ± 0.07	0.78 ± 0.07	0.67 ± 0.05	0.79 ± 0.06			
Se-Cys	0.98 ± 0.06	0.87 ± 0.06	0.98 ± 0.04	0.88 ± 0.04	0.011	0.013	0.0015
SeO ₃	0.02 ± 0.06	0.13 ± 0.06	0.02 ± 0.04	0.12 ± 0.04			

References

- Antonyak, H., Iskra, R., Panas, N., Lysiuk, R. (2018) Selenium. In Malavolta, M., Mocchegiani, E. (eds.) Trace Elements and Minerals in Health and Longevity, Springer, ISSN 2199-9007.
- Astratinei, V., Lens, PNL., Van Hullebusch, ED. (2006) Bioconversion of selenate in methanogenic anaerobic granular sludge. J Environ Qual 35:1873–1883. doi:10.2134/jeq2005.0443.
- Barickman, TC., Kopsell, DA., Sams CE. (2013) Selenium influences glucosinolate and isothiocyanates and increases sulfur uptake in *Arabidopsis thaliana* and rapid-cycling *Brassica oleracea*. J Agric Food Chem. Jan 9, 61(1): 202-9.
- Chu, J., Yao, X., Zhang, Z. (2010) Responses of wheat seedlings to exogenous selenium supply under cold stress. Biol.TraceElem.Res. 136, 355–363. doi:10.1007/s12011-009-8542-3
- Chung, J., Nerenberg, R., Rittmann, BE. (2006) Bioreduction of selenate using a hydrogen-based membrane biofilm reactor. Environ Sci Technol 40:1664–1671. doi:10.1021/es051251g.
- Coppin, F., Charboulet, C., Martin-Garin, A. (2009) Selenite interactions with some particulate organic and mineral fractions isolated from a natural grassland soil. Eur J Soil Sci 60: 369–376.
- Dumont, E., Vanhaecke, F., Cornelis, R. (2006) Selenium speciation from food source to metabolites: a critical review. Anal. Bioanal. Chem. 385, 999-1007.

- 1
2
3
4
5
6 Eswayah, AS., Smith, TJ., Gardiner, PH. (2016) Microbial Transformations of Selenium Species of
7 Relevance to Bioremediation. *J Appl Environ Microbiol.* 82(16), 4848-59. doi:10.1128/AEM.00877-16
8
9
10 El Mehdawi, AF., Jiang, Y., Guignardi, ZS., Esmat, A., Pilon, M., Pilon- Smits, EA., Schiavon, M.
11 (2018) Influence of sulfate supply on selenium uptake dynamics and expression of sulfate/selenate
12 transporters in selenium hyperaccumulator and nonhyperaccumulator *Brassicaceae*. *New Phytol*, 217,
13 194-205.
14
15
16 Feist, LJ., Parker, D.R. (2001) Ecotypic variation in selenium accumulation among populations of
17 *Stanleya pinnata*. *New Phytol.* 149, 61–69.
18
19
20 Fleming, GA., Walsh, T. (1957) Selenium occurrence in certain Irish soils and its toxic effects on
21 animal. *Roy. Ir. Acad. Proc.* 1956/1957, 58, 151–166.
22
23
24 Fordyce, Fiona. (2005) Selenium deficiency and toxicity in the environment. In: Selinus, O., (ed.)
25 *Essentials of medical geology*. Elsevier, 373-415.
26
27
28 Gupta, M. and Gupta, S. (2017) An Overview of Selenium Uptake, Metabolism, and Toxicity in Plants.
29 *Front Plant Sci.*7: 2074.
30
31
32 Hartikainen, H. (2005) Biogeochemistry of selenium and its impact on food chain quality and human
33 health. *J. Trace Elem. Med. Biol.* 18, 309 – 318.
34
35
36 Hasanuzzaman, M. and Fujita, M. (2011) Selenium pretreatment upregulates the antioxidant defense
37 and methyl glyoxal detoxification system and confers enhanced tolerance to drought stress in rape seed
38 seedlings. *Biol.TraceElem. Res.* 143,1758–1776.doi:10.1007/s12011-011-8998-9
39
40
41 Helin, J., Ikonen, ATK., Hjerpe, T. (2010) Review of element specific data for biosphere assessment
42 BSA-2009. Working Report 2010-37, Posiva Oy.
43
44
45 Hondal, RJ., Marino, SM., Gladyshev, VN. (2012) Selenocysteine in thiol/disulfide-like exchange
46 reactions. *Antioxid.RedoxSignal.* 18, 1675–1689. doi:10.1089/ars.2012.5013
47
48
49 Honkanen, AP., Ollikkala S., Ahopelto, T., Kallio, AJ., Blomberg, M., Huotari, S. (2019) Johann-type
50 laboratory-scale x-ray absorption spectrometer with versatile detection modes. *Review of Scientific*
51 *Instruments*, 90, 033107 doi:10.1063/1.5084049
52
53
54 Idris, EE., Iglesias, DJ., Talon, M., Borriss, R. (2007) Tryptophan-dependents production of indole-3-
55 acetic acid (IAA) affects level of plant growth promotium by bacillus amyloliquefaciens FZB42. *Mol*
56 *Plant Microbe Interact* 20, 619-629.
57
58
59
60
61
62
63
64
65

1
2
3
4 Joo, GJ., Kim YM., Kim, JT., Rhee, IK., Kim, JH., Lee, IJ. (2005) Gibberellins-producing
5 rhizobacteria increase endogenous gibberellins content and promote growth of peppers. J. Microbiol
6 43, 510 – 520.
7

8
9 Kai, M., Vespermann, A., Piechulla, B. (2008) The growth of fungi and *Arabidopsis thaliana* is
10 influenced by bacterial volatiles. Plant Signal Behav. 3, 1–3.
11
12

13 Kashiwa, M., Nishimoto, S., Takahashi, K., Ike, M., Fujita, M. (2000) Factors affecting soluble
14 selenium removal by a selenate-reducing bacterium *Bacillus* sp. SF-1. J Biosci Bioeng 89, 528–533.
15 doi:10.1016/S1389-1723(00)80051-1.
16

17
18 Kramer, GF., Ames, BS. (1988) Mechanisms of mutagenicity and toxicity of sodium selenite in
19 *Salmonella typhimurium*. Mutat Res 201, 169–180.
20
21

22 Kumar, M., Bijo, AJ., Baghel, RS., Reddy, CRK., Jha, B. (2012) Selenium and spermine alleviates
23 cadmium induced toxicity in the seaweed *Gracilaria dura* by regulating antioxidant system and
24 DNAmethylation. PlantPhysiol. Biochem. 51, 129–138. doi:10.1016/j.plaphy.2011.10.016
25
26

27 Li, HF., McGrath, SP. Zhao, FJ. (2008) Selenium uptake, translocation and speciation in wheat
28 supplied with selenate or selenite. NewPhytol. 178, 92–102. doi:10.1111/j.1469-8137.2007.02343.x
29
30

31
32 Lindblom, SD., Wangeline, AL., Valdez Barillas, JR., Berthal, D., Fakra SC., Pilon-Smits EAH. (2018)
33 Fungal Endophyte *Alternaria tenuissima* Can Affect Growth and Selenium Accumulation in Its
34 Hyperaccumulator Host *Astragalus bisulcatus*. Front Plant Sci 9, 1213.
35 DOI=10.3389/fpls.2018.01213
36
37

38 Lindblom, SD., Valdez Barillas, JR., Fakra SC., Maracus, MA., Wangelinec, AL., Pilon-Smits EAH.
39 (2012) Influence of microbial associations on selenium localization and speciation in roots of
40 *Astragalus* and *Stanleya* hyperaccumulators. Environ Exper Bot doi:10.1016/j.envexpbot.2011.12.011
41
42

43 Lusa, M., Bomberg, M., Aromaa, H., Knuutinen, J., Lehto, J. (2015) The Microbial Impact on the
44 Sorption Behaviour of Selenite in an Acidic, Nutrient-poor Boreal Bog. J Environ. Radioactiv. 147, 85-
45 96.
46
47

48
49 Lusa, M, Lehto, J., Aromaa, H., Knuutinen, J., Bomberg, M. (2016) The Uptake of Radioiodide by
50 *Paenibacillus* sp., *Pseudomonas* sp., *Burkholderia* sp. and *Rhodococcus* sp. isolated from a Boreal
51 Nutrient-poor Bog. J Environ. Sci. 44, 26-37.
52
53

54 Lusa, M., Knuutinen, J., Bomberg, M. (2017) Uptake and reduction of Se(IV) in two heterotrophic
55 aerobic *Pseudomonads* strains isolated from boreal bog environment. AIMS Microbiology, 4: 798-814.
56
57
58
59
60
61
62
63
64
65

- 1
2
3
4 Manceau, A., Gallup, DL. (1997) Removal of selenocyanate in water by precipitation: characterization
5 of copper-selenium precipitate by x-ray diffraction, infrared, and x-ray absorption spectroscopy.
6 Environ Sci Technol 31: 968–976.
7
8
9 Nancharaiah, YV., Lens, PN (2015) Ecology and biotechnology of selenium-respiring bacteria.
10 Microbiol Mol Biol Rev 79, 61–80. doi:10.1128/MMBR.00037-14.
11
12
13 Oldfield, JE. (2002) Selenium World Atlas. Selenium-Tellurium Development Association (STDA),
14 Belgium.
15
16
17 Pandey, C., Gupta, M.(2015) Selenium and auxin mitigates arsenic stress in rice(*Oryzasativa* L.) by
18 combining the role of stress indicators, modulators and genotoxicity assays. J.Hazard.Mater. 287,3 84–
19 391. doi:10.1016/j.jhazmat.2015.01.044
20
21
22 Pickering, I. J., George, G. N., Van Fleet-Stalder, V., Chasteen, T. G., & Prince, R. C. (1999) X-ray
23 absorption spectroscopy of selenium-containing amino acids. JBIC Journal of Biological Inorganic
24 Chemistry, 4(6), 791–794. doi:10.1007/s007750050352
25
26
27 Pieniz, S., Okeke, BC., Andrezza, R., Brandelli, A. (2011) Evolution of selenite bioremoval from
28 liquid culture by *Enterococcus* species. Microbiological Research 166 (2011) 176 – 185.
29
30
31 Pilon-Smits, E.A.H., Freeman, J.L. (2006) Environmental cleanup using plants: biotechnological
32 advances and ecological considerations. Front Ecol Environ; 4(4): 203–210.
33
34
35 Rayman, M. (2000) The importance of selenium to human health. Lancet 356, 233–41.
36
37
38 Reid, MF., Duffield-Lilloco, AJ., Slate, E., Natarajan, N., Turnbull, B., Jacobs, E., Combs, GF. Jr,
39 Alberts, DS., Clark, LC., Marshall, JR. (2008) The nutritional prevention of cancer: 400 mcg per day
40 Se treatment. Nutr. Cancer 60, 155 – 163.
41
42
43 Robinson, BH., Mills, TM., Petit, D., Fung, LE., Green, SR., and Clothier, BE. (2000) Natural and
44 induced cadmium accumulation in poplar and willow: implications for phytoremediation. PlantSoil
45 227, 301–306. doi:10.1023/A:1026515007319
46
47
48 Roux, M., Sarret, G., Pignot-Paintrand, I., Fontcave, M., Covés J., (2001) Mobilization of selenite by
49 *Ralstonia metallidurans* CH34. Appl. Environ. Microbiol. 67, 769 – 773.
50
51
52 Sarret, G., Avoscan, L., Carrière, M., Collins, R., Geoffroy, N., Carrot, F., Covés, J., Gouget, B. (2005)
53 Chemical forms of selenium in the metal-resistant bacterium *Ralstonia metallidurans* CH34 exposed to
54 selenite and selenite. Appl. Environ. Microbiol. 71(5), 2331 – 2337.
55
56
57 Schiavon, M., Pilon-Smits, E.A.H. (2017) Selenium Biofortification and Phytoremediation
58 Phytotechnologies: A Review. J. Environ. Qual. 46:10–19.
59
60
61
62
63
64
65

1
2
3
4
5 Schild, F., Kieffer-Jaquinod, S., Palencia, A., Cobessi, D., Sarret, G., Zubieta, C., Jourdain, A.,
6 Dumas, R., Forge, V., Testemale, D, Bourguignon, J., Hugouvieux, V. (2014) Biochemical and
7 Biophysical Characterization of the Selenium-binding and Reducing Site in *Arabidopsis thaliana*
8 Homologue to Mammals Selenium-binding Protein 1*. J Biol Chem 289, 31765-31776.
9
10

11
12 Schirawski, J., Perlin, M. H. (2018). Plant-Microbe Interaction 2017-The Good, the Bad and the
13 Diverse. Int J Mol Sci, 19(5), 1374. doi:10.3390/ijms19051374
14

15
16 Sharmasarkar, S., Vance, GF. (2002) Soil and plant selenium at a reclaimed uranium mine. J Environ
17 Qual 31: 1516–1521.
18

19
20 Sivia, D.S., Skilling J. (2006) Data analysis – A Bayesian tutorial, Oxford University Press, Second
21 edition
22

23
24 Srivastava, S., Chaudhry, V., Mishra, A., Chauhan, PS., Rehman, A., Yadav, A., Tuteja, N., Nautiyal,
25 CS. (2012) Gene expression profiling through microarray analysis in *Arabidopsis thaliana* colonized
26 by *Pseudomonas putida* MTCC5279, a plant growth promoting rhizobacterium. Plant Signal Behav 7
27 (2), 235 – 245.
28

29
30 de Souza, MP., Chu D., Zhao M., Zayed, AM., Ruzin, SE., Schichnes, D., Terry N. (1999) Rhizosphere
31 bacteria enhance selenium accumulation and volatilization by Indian mustard. Plant Physiol 119: 565–
32 573.
33

34
35 Sura-de Jong, Reynolds. RJ., Richterova, K., Musilova, L., Staicu, LC., Chocholata, I., Cappa, JJ.,
36 Taghavi, S., van der Lelie, D., Frantik, T., Dolinova, I., Strejcek, M., Cochran, AT., Lovecka, P., Pilon-
37 Smits, EA. (2015) Selenium hyperaccumulators harbor a diverse endophytic bacterial community
38 characterized by high selenium resistance and plant growth promoting properties. Front. Plant Sci. 6,
39 113.
40

41
42
43 Stranges, S., Sieri, S., Vinceti, M. Grioni, S., Guallar, E., Laclaustra, M., Muti, P., Berrino, F., Krogh,
44 V. (2010) A prospective study of dietary selenium intake and risk of type 2 diabetes. Public Health 10,
45 564.
46

47
48 Tarze, A., Dauplais, M., Grigoras, I., et al. (2007) Extracellular production of hydrogen selenide
49 accounts for thiol-assisted toxicity of selenite against *Saccharomyces Cerevisiae*. J Biol Chem 282,
50 8759–8767.
51

52
53
54 Turner, RJ., Weiner, JH., Taylor, DE. (1998). Selenium metabolism in *Escherichia coli*. Biometals
55 11:223–227. <http://dx.doi.org/10.1023/A:1009290213301>.
56

57
58 Vespermann, A., Kai, M, Piechullaet, B. (2007) Rhizobacterial volatiles affect the growth of fungi and
59 *Arabidopsis thaliana*. Appl Environ Microbiol 73, 5639–5641.
60
61

1
2
3
4
5 Vinceti, M., Wei, ET., Malagoli, C., Bergomi, M., Vivoli, G. (2001) Adverse health effects of selenium
6 in humans. Rev Environ Health. 16(4):233-51.
7

8
9
10 Wang, P., Menzies, N. W., Lombi, E., McKenna, B. A., James, S., Tang, C., & Kopittke, P. M. (2015).
11 Synchrotron-based X-ray absorption near-edge spectroscopy imaging for laterally resolved speciation
12 of selenium in fresh roots and leaves of wheat and rice. Journal of Experimental Botany, 66(15), 4795–
13 4806. doi:10.1093/jxb/erv254
14

15
16 Wenke, K., et al. (2012) Bacterial Volatiles Mediating Information Between Bacteria and Plants. In:
17 Witzany G., Baluška F. (eds) Biocommunication of Plants. Signaling and Communication in Plants,
18 vol 14. Springer, Berlin, Heidelberg
19

20
21 White, PJ., Bowen, HC., Parmaguru, P., Fritz, M., Spracklen, WP., Spiby, RE., Meacham, MC., Mead,
22 A., Harriman, M., Trueman, LJ., Smith, BM., Thomas, B., Broadley, MR. (2004) Interactions between
23 selenium and sulphur nutrition in *Arabidopsis thaliana*. J Exp. Bot., 55 (404), 1927–1937.
24

25
26 White, PJ., Broadley, MR. (2009) Biofortification of crops with seven mineral elements often lacking
27 in human diets--iron, zinc, copper, calcium, magnesium, selenium and iodine. New Phytol. 182(1), 49-
28 84.
29

30
31 World Health Organization. (1996). Trace Elements in Human Nutrition and Health, World Health
32 Organization, Geneva.
33

34
35 Xi, W., Gong, X., Yang, Q., Yu, H., Liou, YC. (2016) Pin1At regulates PIN1 polar localization and
36 root gravitropism. Nature Communications 2016/01/21/online, DOI: 10.1038/ncomms10430
37

38
39 Yin, XB., Yuan, LX. (eds.) (2012) “Phytoremediation and biofortification,” in Two Sides of One Coin,
40 (Berlin, Springer), 1–31.
41

42
43 Zhang, Y., Pan, G., Chen, J., Hu, Q. (2003) Uptake and transport of selenite and selenate by soybean
44 seedlings of two genotypes. Plant Soil 253, 437–443.
45

46
47 Zhang, YQ., Okeke, BC., Frankenberger, Jr WT. (2008) Bacterial reduction of selenate to elemental
48 selenium utilizing molasses as a carbon source. Bioresour Technol 99, 1267 – 1273.
49

50
51 Zhang, B., Zhou, K., Zhang, J., Chen, Q., Liu, G., Shang, N., (2009) Accumulation and species
52 distribution of selenium I Se-enriched bacterial cells of the Bifidobacterium animalis 01. Food Chem
53 115, 727 – 734.
54

55
56 Zhao, C., Ren, J., Xue, C., Lin, E. (2005) Study on the relationship between soil selenium and plant
57 selenium uptake. PlantSoil 277, 197–206. doi:10.1007/s11104-005-7011-9
58
59
60
61
62
63
64
65

1
2
3
4
5
6
7
8
9
10
11
12
13
14
15
16
17
18
19
20
21
22
23
24
25
26
27
28
29
30
31
32
33
34
35
36
37
38
39
40
41
42
43
44
45
46
47
48
49
50
51
52
53
54
55
56
57
58
59
60
61
62
63
64
65

Zhu, YG., Pilon-Smits, EA., Zhao, FJ., Williams, PN., Meharg, AA. (2009) Selenium in higher plants: understanding mechanisms for bio fortification and phytoremediation. *Trends Plant Sci.* 19, 436–442.

Table 1. Proteins (calculated molecular weight (MW), kDa) expressed in *B. oleracea* in response to Se(IV) and *Pseudomonas* sp. T5-6-I treatments obtained using HPLC-SEC and total protein fractions.

Peak position	CTRL MW (kDa)	Se MW (kDa)	<i>Pseud.</i> MW (kDa)	Se+ <i>Pseud.</i> MW (kDa)
1	239.8			
2	149.6			
3	85.0			
4	77.3	77.5	77.3	77.0
5	62.3	62.1		
6	52.5	51.9	52.9	52.8
7	48.3	48.0	48.2	48.2
8	38.0	38.0	37.8	37.5
9	34.3	34.2	34.2	33.9
10		31.5	31.9	30.8
11			28.0	
12	20.8	20.8	20.8	20.6
13	18.9	18.9	18.9	18.8
14	17.0	17.0	17.0	17.0
15				14.8
16	13.4	13.2	13.1	13.4
17	11.4	11.5	11.4	11.4
18	9.2			
19				8.5
20				8.3

Table A1: Weighed masses of samples and estimated Se concentrations. A conservative 20 % error based on the statistical accuracy of data was used in the estimation.

Sample	Dry mass (mg)	Se K edge steps	Estimated Se mass (μg)	Se concentration (mg/kg DW)
Leaves + T5-6-I	74.5	0.0019	3.2 ± 0.6	43 ± 9
Leaves	75.4	0.0024	4.0 ± 0.8	53 ± 11
Roots + T5-6-I	12.5	0.0025	4.2 ± 0.8	340 ± 70
Roots	9.1	0.0022	3.7 ± 0.7	410 ± 80

Table A2: Fitted fractions of two component reference fits and their relative likelihoods to explain the observed data. Se:Se-Cys and Se-Met:SeO₃ fits lead to unphysical fit parameters and are thus omitted from the table.

Fitted references	Leaves + T5-6-I	Leaves	Roots + T5-6-I	Roots	Relative probability to explain bacteria samples	Relative probability to explain non-bacteria samples	Relative probability to explain all the samples
Se	0.64 ± 0.04	0.58 ± 0.04	0.65 ± 0.03	0.58 ± 0.03	7.3×10^{-13}	2.3×10^{-7}	1.7×10^{-19}
SeO ₃	0.36 ± 0.04	0.42 ± 0.04	0.35 ± 0.03	0.42 ± 0.03			
Se-Cys	0.6 ± 0.2	0.6 ± 0.2	0.88 ± 0.14	0.58 ± 0.15	1	1	1
Se-Met	0.4 ± 0.2	0.4 ± 0.2	0.12 ± 0.14	0.42 ± 0.15			
Se	0.25 ± 0.07	0.22 ± 0.07	0.33 ± 0.05	0.21 ± 0.06	0.42	0.011	0.048
Se-Met	0.75 ± 0.07	0.78 ± 0.07	0.67 ± 0.05	0.79 ± 0.06			
Se-Cys	0.98 ± 0.06	0.87 ± 0.06	0.98 ± 0.04	0.88 ± 0.04	0.011	0.013	0.0015
SeO ₃	0.02 ± 0.06	0.13 ± 0.06	0.02 ± 0.04	0.12 ± 0.04			