

**This is an electronic reprint of the original article.
This reprint *may differ* from the original in pagination and typographic detail.**

Author(s): Kekäläinen, Tiia; Kokko, Katja; Sipilä, Sarianna; Walker, Simon

Title: Effects of a 9-month resistance training intervention on quality of life, sense of coherence, and depressive symptoms in older adults : randomized controlled trial

Year: 2018

Version:

Please cite the original version:

Kekäläinen, T., Kokko, K., Sipilä, S., & Walker, S. (2018). Effects of a 9-month resistance training intervention on quality of life, sense of coherence, and depressive symptoms in older adults : randomized controlled trial. *Quality of Life Research*, 27(2), 455-465. <https://doi.org/10.1007/s11136-017-1733-z>

All material supplied via JYX is protected by copyright and other intellectual property rights, and duplication or sale of all or part of any of the repository collections is not permitted, except that material may be duplicated by you for your research use or educational purposes in electronic or print form. You must obtain permission for any other use. Electronic or print copies may not be offered, whether for sale or otherwise to anyone who is not an authorised user.

Effects of a 9-month resistance training intervention on quality of life, sense of coherence, and depressive symptoms in older adults: randomized controlled trial

Tiia Kekäläinen^{1,2} · Katja Kokko¹ · Sarianna Sipilä¹ · Simon Walker²

Accepted: 1 November 2017 / Published online: 9 November 2017
© The Author(s) 2017. This article is an open access publication

Abstract

Purpose (1) To determine the effects of a 9-month resistance training intervention on quality of life, sense of coherence, and depressive symptoms in older adults, and (2) to compare effects between different training frequencies.

Methods Men and women aged 65–75 ($N = 106$) were randomized to four groups according to training frequency: training groups RT1 ($n = 26$), RT2 ($n = 27$), and RT3 ($n = 28$) and non-training control group ($n = 25$). All training groups attended supervised resistance training twice a week for 3 months. For the following 6 months, they continued training with different frequencies (1, 2 or 3 times per week). Psychological functioning was measured by quality of life (WHOQOL-Bref), sense of coherence (Antonovsky's SOC-13), and depressive symptoms (Beck's Depression Inventory II). Measurements were conducted at baseline and 3 and 9 months after baseline. The effects of the intervention were analyzed using generalized estimating equations (GEE).

Results After 3 months, there was an intervention effect on environmental quality of life (group \times time $p = .048$). Between 3 and 9 months, environmental quality of life decreased among RT1 compared to RT2 and RT3 (group \times time $p = .025$). Between baseline and 9 months, environmental quality of life increased in RT2 compared to all other groups (group \times time $p = .011$). Sense of coherence

increased in RT2 compared to the control group and RT3 (group \times time $p = .032$).

Conclusion Resistance training is beneficial for environmental quality of life and sense of coherence. Attending resistance training twice a week seems to be the most advantageous for these aspects of psychological functioning.

Keywords Quality of life · Aging · Exercise · Well-being · Coping · Mood

Introduction

Quality of life (QoL) is a major area of interest in a wide range of fields. The World Health Organization [1] has defined QoL as “individuals’ perception of their position in life in the context of the culture and value systems in which they live and in relation to their goals, expectations, standards and concerns.” QoL is a subjective evaluation, which is related to an individual’s cultural, social, and environmental context, and encompasses four different domains: physical, psychological, social, and environmental [1]. Of these domains, especially the physical domain tends to decrease with age [2].

Sense of coherence (SoC) and depressive symptoms (DS) are both closely related to QoL [3–5]. According to Antonovsky’s salutogenesis theory [6], SoC is a life orientation and reflects an individual’s perception of how meaningful, manageable, and comprehensible their life is. SoC could be seen as a health resource, because it reveals how people perceive life and use their resources to cope with stressors. Both cross-sectional and longitudinal studies [3] have shown SoC to be related to QoL. Unlike SoC, depression is a major mental health problem [7]. Even minor levels of depression are related to poorer QoL in

✉ Tiia Kekäläinen
tiia.m.kekalainen@jyu.fi

¹ Gerontology Research Center and Faculty of Sport and Health Sciences, University of Jyväskylä, PO Box 35, 40014 Jyväskylä, Finland

² Neuromuscular Research Center and Faculty of Sport and Health Sciences, University of Jyväskylä, PO Box 35, 40014 Jyväskylä, Finland

all domains [4, 5] and to weaker SoC [8]. Hence, both SoC and DS are worth considering when promoting older adults' QoL.

Physical activity is a key factor to maintain health and functional capacity during aging. Both aerobic physical activity (e.g., at least 150 min/week in moderate intensity) and muscle-strengthening activities (at least twice a week) are recommended activities for older adults [9]. Only a minority of older adults meet these recommendations, especially for muscle-strengthening activities [10]. This is alarming, because resistance training (RT) offers major benefits, such as improving strength and power, increasing muscle mass, reducing risk of functional limitations, difficulties in daily tasks and falls, and enables individuals to stay physically active [11, 12]. In addition to physical benefits, earlier literature has shown that exercise is positively associated with psychological functioning, such as QoL and DS, in older adults [13–16]. The underlying reasons why exercise was shown to be beneficial to psychological functioning may have been related to improvements in physical functioning (e.g., muscle strength, cardiovascular functioning), social interaction, or mastery experiences gained during exercise [14, 17], for example.

The effect of RT on QoL is still unclear; in some intervention studies RT appeared to have a positive effect especially on the physical domain of QoL [18–20], whereas in others no effects were found [21–23]. Positive effects have been found both after shorter (e.g., 12 weeks) [18, 19] and longer (e.g., 8 months) [20] RT interventions. Only few studies have reported the effects of RT on SoC. Among older adults with hip fracture history, a 12-week strength training intervention (training twice a week) did not influence SoC [24], whereas another 10-month strength/flexibility/balance training intervention study (training three times a week) had a positive within-group effect on SoC [25]. Previous studies are more consistent regarding DS; evidence shows that RT slightly reduces DS in both healthy older adults and those with diagnosed depression [26, 27]. Therefore, it seems that RT may have a positive influence on psychological functioning, but more studies are needed to uncover the effects of RT on specific areas of psychological functioning among older adults.

Another unclear area is the effect of RT frequencies on psychological functioning. One earlier study compared the effect of RT two or three times a week [28] in older women and another study RT three or four times a week [29] on QoL in middle-aged women. In these two studies, both intervention groups improved their QoL without significant between-group differences. However, the durations of the interventions were 12 [28] and 8 [29] weeks, so it is not clear whether training frequencies have different effects after long-term RT. In addition, training frequency has usually been two or three times a week and it is unclear whether

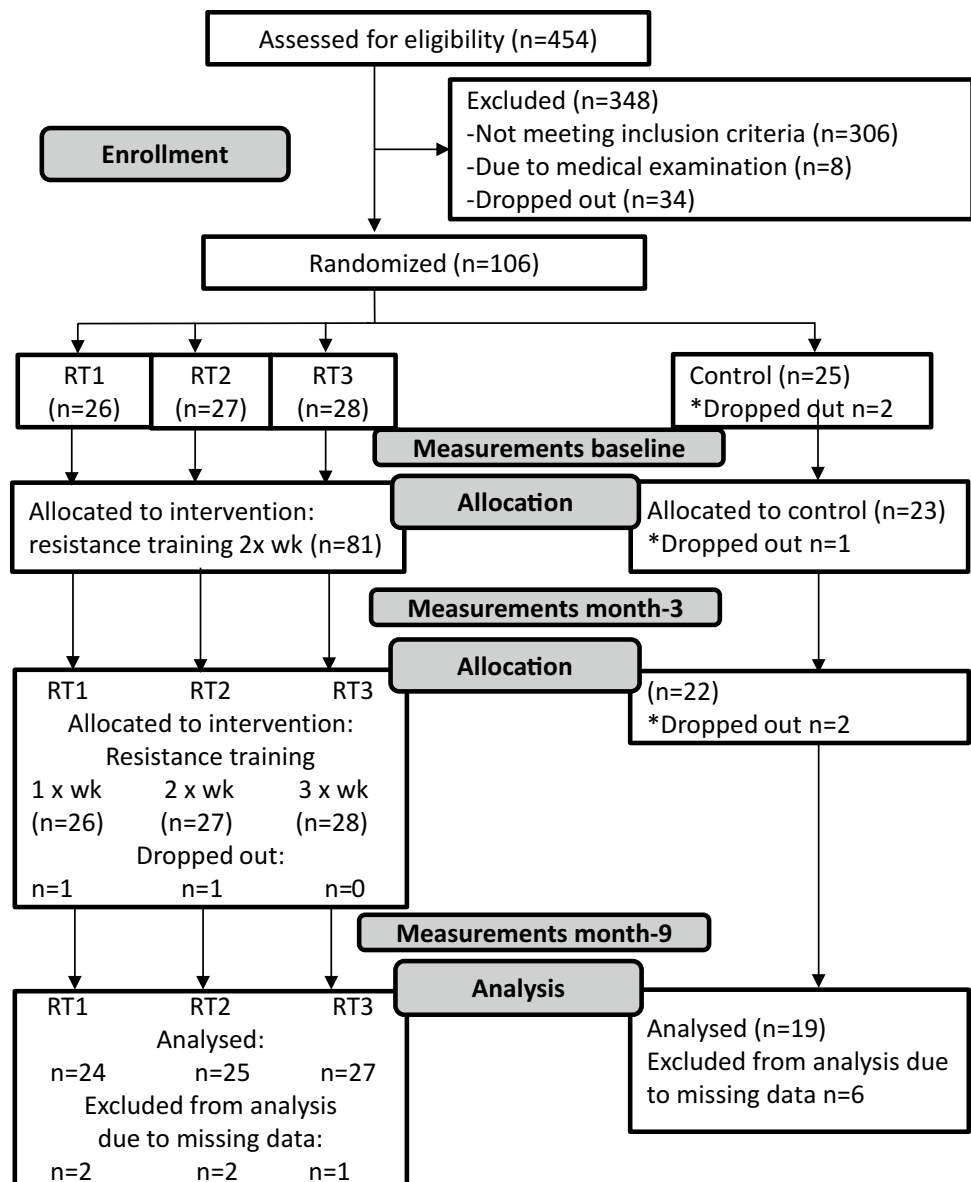
RT only once a week could have an effect on psychological functioning.

The purpose of this study was to (1) investigate the effects of RT intervention on psychological functioning, assessed here by QoL, SoC, and DS, in older adults after 3 and 9 months of training and (2) compare the effect of different training frequencies (one, two, or three times a week) on these areas of psychological functioning. The present study was based on a secondary analysis of a randomized controlled trial investigating the minimum training frequency to improve neuromuscular performance and health among older adults. Physical performance results from the same trial show that RT increased maximum strength [30] and cardiorespiratory fitness after 3 months of training [31], and a higher training frequency provided greater benefit for maximum dynamic strength but not for functional capacity over 9 months [32]. Based on those results and previous studies on psychological functioning, we hypothesized that RT is beneficial for psychological functioning already after 3-month training and there are no differences between frequencies.

Methods

Study design and participants

The present study was based on a secondary analysis of a parallel-group randomized controlled trial, “Minimum resistance training frequency: effect on motivation and adherence to train, overall health status and neuromuscular performance” (NCT02413112). The trial is described in further detail in previous studies [30–32]. The flowchart of the study is shown in Fig. 1. Pre-trial statistical power analysis was performed for the primary outcomes, maximum strength, and functional capacity, based on the effect sizes reported in a meta-analysis by Liu and Latham [33]. With a 75:25 intervention-to-control ratio, a sample size of 44 (intervention) and 15 (control) for strength and 66 and 22 for functional capacity was necessary to reach 80% probability that treatment differences could be observed with a 5% level of significance. Two thousand invitation letters were sent to a random sample of community-dwelling 65–75-year-old older adults living in the Jyväskylä area. In total, 454 (23%) responded by filling in an online registration form. The exclusion criteria were (1) regular aerobic exercise (over 3 h/week), (2) RT experience, (3) BMI > 37, (4) previous testosterone-altering treatment, (5) serious cardiovascular disease that may lead to complications during exercise, (6) use of pharmaceuticals that affect the neuromuscular or endocrine systems, (7) use of walking aids, and (8) smoking. Potential participants ($n = 148$ of 454) were invited to an information session. One hundred and sixteen persons provided written informed consent and attended a doctor's examination to

Fig. 1 Flow diagram of the study

assess their health and ability to perform RT; eight persons were excluded due to medical reasons. After two drop-outs, 106 participants were randomized by a random number generator (online) in a block of 100 subjects, so that 25 subjects were selected into each group. Each number in sequence was allocated to each group in descending order. The remaining six subjects were randomized within the training groups. As it was assumed that training three times a week likely increased the chance of drop-out and/or non-compliance, three subjects were randomized to group 3, two to group 2, and one to group 1. The study groups were RT once a week (RT1, $n = 26$), twice a week (RT2, $n = 27$), three times a week (RT3, $n = 28$), and non-training control group (CG, $n = 25$). After randomization, two participants from CG dropped out because they were dissatisfied with the results of randomization. Hence, 104 participants started the study.

CG was instructed not to change their lifestyle during the intervention, and after post-intervention measurements, they had an opportunity to participate in supervised RT twice a week for 6 months. Ethical approval was obtained from the University of Jyväskylä Ethical Committee.

Intervention

All training sessions were performed at the gym in the University of Jyväskylä, and were supervised by experienced personnel. Each training session lasted for 1 h, and consisted of a 10-min warm-up and 8–9 exercises for different muscle groups. *Months 1–3*: All three training groups trained twice a week, to become familiar with RT methods, and to build capacity for subsequent high-load training. The focus was on local muscular endurance using low loads. *Months 4–9*:

The training groups split into different training frequencies in which they were randomized: For RT1, this represented a reduced and for RT3 an increased training frequency. All training groups followed identical two-session training programs: completing one cycle took 2 weeks for RT1, 1 week for RT2, and RT3 completed three cycles in 2 weeks. Training during months 4–9 was progressively periodized RT, focused on muscle hypertrophy and maximum strength.

Measurements

Quality of life

QoL was assessed using the WHOQOL-BREF questionnaire, which is a shortened version of the WHOQOL-100 [1]. The WHOQOL-BREF is a valid and reliable method to measure QoL in older adults [2, 34]. WHOQOL-BREF includes 26 questions and covers all four domains of QoL. The participants scored the items on a scale from 1 to 5, and the raw domain scores were transformed to a scale of 4–24. Cronbach's alphas for physical domain were .70, .68, and .70, for psychological domain .77, .76, and .77, for social domain .67, .78, and .77, and for environmental domain .65, .75, and .79 at baseline, 3, and 9 months, respectively.

Sense of coherence

SoC was measured by Antonovsky's 13-item scale, derived from the original 29-item scale [6, 35]. SoC scale is a widely used reliable and valid measurement [35]. The answers were given on a scale from 1 to 7, and aggregated. Cronbach's alphas were .77, .80, and .82 at baseline, 3, and 9 months, respectively.

Depressive symptoms

DS were assessed with the Beck Depression Inventory II (BDI-II), which is a revised version of the original BDI [36]. The BDI-II has adequate reliability and validity in all age groups [37]. The inventory consists of 21 statements, which are scored from not present (0) to severe (3), and the overall scoring range is 0–63. Cronbach's alphas were .72 at baseline, .77 at month-3, and .77 at month-9.

Aerobic exercise

The mean amount (minutes/week) of aerobic exercise at baseline was obtained by a self-reported questionnaire. Physical activity diaries tracked daily leisure-time aerobic exercise throughout the study. The average weekly aerobic exercise in months 1–3 and 4–9 was calculated.

Strength and functional capacity

The protocols to measure strength and functional capacity are described previously [30–32]. A bilateral leg press one-repetition maximum (1-RM) was used to assess maximum strength. Functional capacity was assessed by time to complete 7.5 m forward and backward walk, timed-up-and-go (TUG), and loaded 10-stair climb tests.

Statistics

Analyses were performed using IBM SPSS Statistics 24.0 (IBM Corp., released 2016, IBM SPSS Statistics for Windows, Armonk, NY). Results presented here were analyzed by intention-to-treat principle with the exception of those two participants who dropped out from CG before baseline measurements right after the randomization.

The effect of the intervention on QoL, SoC, and DS was analyzed by generalized estimating equation (GEE) models with an unstructured working correlation matrix. The advantage of the GEE method is that when pre- or post-intervention measurement is missing, it utilizes the information also from incomplete pair of observations [38]. Three sets of GEE models were performed. First, the differences between the training group and CG from baseline to month-3 were tested. Second, the differences between CG, RT1, RT2, and RT3 from month-3 to month-9 were tested, and third, the differences between these four groups from baseline to month-9 were tested.

The amount of leisure-time aerobic exercise (min/week) was not stable in all groups during the intervention. CG had significantly higher amount of aerobic exercise in months 1–3 (mean 193 min/week) and 4–9 (172 min/week) compared to baseline (110 min/week) (paired sample *t*-test $p = .028$ and $p = .039$, respectively), and RT3 in months 1–3 (145 min/week) compared to baseline (85 min/week) ($p = .007$). Therefore, GEE analyses were adjusted by average aerobic exercise (min/week). Leisure-time physical activity diaries from months 1–3 were missing from 19 participants, of which 11 were from CG. The missing data for CG participants were imputed using linear regression imputation, with baseline and 4–9 months of aerobic exercise as predictors, for those ($n = 7$) who had both values. After the imputation, the final sample sizes for GEE analyses were 19/23 in CG and 73/81 in the training group for baseline to month-3 analyses (9% missing) and 19/23 in CG, 24/26 in the RT1, 25/27 in the RT2, and 27/28 in the RT3 for month-3 to month-9 and baseline to month-9 analyses (9% missing).

Changes in outcome variables were calculated by subtracting the previous value from the intervention completion value. The standardized effect sizes for differences between groups were calculated with Cohen's *d* formula [39]. Within-group differences were analyzed by paired sample *t* tests.

Results

There were one drop-out from CG between baseline and month-3, and four drop-outs (two from CG, one from RT1, and one from RT2) between month-3 and month-9 (Fig. 1). There were no significant differences ($p > .05$) between the groups in participants' characteristics (Table 1) and QoL, SoC, and DS (Table 2) at baseline.

Results for QoL, SoC, and DS are presented in Tables 2 and 3. After the 3-month intervention, there were within-group improvements in physical and psychological QoL and SoC in the training group and in DS in both training group and CG. The only significant group \times time difference was found in environmental QoL (Table 3; Fig. 2a). From month-3 to month-9, different frequencies were used by the training groups. Social QoL decreased in RT3 and SoC increased in RT2. The only significant change between the groups occurred in the environmental QoL (Table 3; Fig. 2b). Environmental QoL decreased in RT1 compared to RT2 and RT3. From baseline to month-9, psychological QoL and SoC improved in RT1 and RT2, social QoL decreased and environmental QoL increased in RT2, and DS decreased in RT2, RT3, and CG. SoC and the environmental QoL showed a significant group \times time interaction (Table 3; Fig. 2c). Throughout the 9-month intervention, both SoC and environmental QoL increased in RT2 compared to CG and to RT3, and environmental QoL also compared to RT1. According to effect sizes (Table 2), the changes in SoC and environmental QoL in RT2 were large compared to CG (effect sizes > 0.80) and medium compared to RT1 and RT3 (effect sizes > 0.50).

The correlations between changes in QoL, SoC, DS, strength, and functional capacity are shown in Table 4.

Discussion

The purpose of this study was to determine the effects of RT on QoL, SoC, and DS, as well as to compare the possible effects of different training frequencies on those variables. After a 3-month training period, there was an intervention effect on environmental dimension of QoL. From month-3 to month-9, environmental QoL decreased among those who trained once a week compared to higher training frequencies. Throughout the 9-month intervention, participants who trained twice a week improved their environmental QoL compared to all other groups and SoC compared to CG and to RT3. Therefore, our hypothesis regarding the positive effect of RT on psychological outcomes was partly supported.

We found an intervention effect on environmental QoL after 3 months of training. This is a novel finding, partly because the environmental dimension of QoL is not part of commonly used health-related QoL measurements (e.g., RAND-36/SF-36). Bonganha et al. [22] used the same WHOQOL-BREF questionnaire, and did not observe any changes in environmental QoL after a 16-week 3-times-a-week RT program, but their participants were younger (postmenopausal women) than in the present study. The environmental QoL reflects how satisfied individuals are with their environment and with their access to different services. In the present study, the change in environmental QoL during the first 3 months correlated positively with changes

Table 1 Participants' characteristics at baseline

	CG ($n=23$)	RT1 ($n=26$)	RT2 ($n=27$)	RT3 ($n=28$)	p^a
Gender: female (%)	47.8	53.8	59.6	57.1	.864
Age (year)	68.3 (2.3)	68.9 (2.7)	67.7 (2.8)	69.0 (3.3)	.282
Education (%)					.091
Basic comprehensive school	30.4	32.0	15.4	53.6	
Upper secondary education	21.7	32.0	42.3	25.0	
Tertiary education	47.8	36.0	42.3	21.4	
Marital status (%)					.945
Married/cohabitation	73.9	76.0	80.8	78.6	
Single/divorced/widowed	26.1	24.0	19.2	21.4	
Weight (kg)	74.5 (11.6)	76.5 (14.5)	80.6 (14.1)	81.5 (14.7)	.235
Height (cm)	167.5 (8.7)	166.8 (8.7)	167.9 (7.3)	167.4 (9.3)	.976
BMI (kg/m^2)	26.4 (2.6)	27.3 (3.3)	28.6 (4.4)	29.0 (4.1)	.070
Aerobic training min/week	110.0 (62.7)	113.2 (63.6)	110.8 (56.1)	84.6 (58.3)	.143

Mean and standard deviations or frequencies presented

CG = control group, RT1-3 = resistance training one, two or three times-a-week groups

^aDifferences between groups tested by ANOVA for continuous variables and Chi-Square test for categorical variables

Table 2 Means and standard deviations (SD) of quality of life (QoL), sense of coherence (SoC), and depressive symptoms (DS) at baseline, month-3, and month-9, and effect sizes for mean changes between the groups

	Baseline mean (SD)	Month-3 mean (SD)	Month-9 mean (SD)	Δ Effect size (95% CI) 0–3	Δ Effect size (95% CI) 3–9	Δ Effect size (95% CI) 0–9
Physical QoL						
CG ($n=23, 21, 20$) ^a	16.6 (2.1)	16.7 (1.6)	16.7 (1.8)	Ref.	Ref.	Ref.
RT1, RT2 and RT3 ($n=78, 79$)	16.8 (1.7)	17.2 (1.7) ^b		.44 (–.05, .92)		
RT1 ($n=25, 25, 25$)	17.2 (1.7)	17.5 (1.7)	17.6 (1.6)		–.09 (–.69, .51)	.31 (–.29, .90)
RT2 ($n=26, 27, 26$)	16.7 (1.7)	17.1 (1.4)	17.1 (1.7)		–.06 (–.65, .54)	.26 (–.33, .85)
RT3 ($n=28, 26, 28$)	16.5 (1.8)	16.8 (2.1)	16.6 (2.3)		–.22 (–.81, .38)	.12 (–.46, .69)
Psychological QoL						
CG	15.4 (1.9)	16.1 (1.6)	16.1 (1.5)	Ref.	Ref.	Ref.
RT1, RT2 and RT3	16.1 (2.0)	16.6 (1.9) ^b		.09 (–.40, .57)		
RT1	16.4 (1.9)	16.8 (1.7)	17.1 (1.8) ^d		.08 (–.53, .68)	.30 (–.31, .89)
RT2	16.0 (1.7)	16.5 (1.7)	16.7 (1.8) ^d		.03 (–.56, .62)	.35 (–.25, .94)
RT3	15.9 (2.4)	16.6 (2.3)	16.3 (2.3)		–.18 (–.77, .41)	.17 (–.40, .74)
Social QoL						
CG	14.3 (2.4)	14.6 (2.9)	14.6 (3.0)	Ref.	Ref.	Ref.
RT1, RT2, and RT3	15.2 (2.5)	15.0 (2.9)		.01 (–.47, .49)		
RT1	14.8 (2.7)	14.5 (2.9)	14.6 (2.5)		.05 (–.55, .65)	.09 (–.51, .68)
RT2	15.8 (1.9)	15.1 (2.8)	14.8 (2.4) ^d		–.03 (–.62, .56)	.24 (–.83, .35)
RT3	15.0 (2.8)	15.4 (3.0)	14.1 (2.9) ^c		–.35 (–.94, .25)	–.17 (–.74, .41)
Environmental QoL						
CG	16.6 (1.7)	16.5 (1.7)	16.4 (2.0)	Ref.	Ref.	Ref.
RT1, RT2, and RT3	16.8 (1.7)	17.0 (2.0)		.38 (–.11, .86)		
RT1	17.2 (1.7)	17.7 (1.5)	17.2 (1.6)		–.43 (–1.03, .19) ^c	.23 (–.37, .82)
RT2	16.8 (1.2)	16.9 (1.7)	17.6 (1.4) ^d		.40 (–.20, .99)	.85 (.23, 1.45) ^f
RT3	16.4 (2.0)	16.5 (2.4)	16.5 (2.3)		.14 (–.45, .73)	.39 (–.19, .97)
SoC						
CG	71.3 (6.5)	72.0 (7.0)	72.5 (7.8)	Ref.	Ref.	Ref.
RT1, RT2, and RT3	72.8 (1.5)	75.5 (9.8) ^b		.30 (–.18, .79)		
RT1	75.8 (10.1)	77.9 (9.6)	79.7 (10.0) ^d		–.06 (–.67, .54)	.48 (–.13, 1.07)
RT2	72.2 (11.2)	74.3 (8.9)	77.0 (7.0) ^{c, d}		.22 (–.37, .81)	.85 (.22, 1.44) ^g
RT3	72.6 (9.9)	74.4 (10.8)	74.8 (10.3)		–.11 (–.70, .48)	.28 (–.30, .85)
DS						
CG	5.0 (2.9)	4.1 (3.2) ^b	3.6 (3.6) ^d	Ref.	Ref.	Ref.
RT1, RT2, and RT3	4.5 (3.7)	3.3 (3.4) ^b		–.12 (–.60, .36)		
RT1	3.7 (3.7)	3.5 (4.2)	3.4 (3.5)		.19 (–.41 to .79)	.36 (–.24, .96)
RT2	4.7 (3.6)	3.5 (2.6)	3.0 (2.9) ^d		.02 (–.57, .61)	.08 (–.66, .51)
RT3	5.0 (3.8)	2.9 (3.3)	3.1 (3.2) ^d		.34 (–.26, .93)	–.24 (–.82, .34)

Significant ($p < .05$) difference within group between ^bBaseline and month-3, ^cMonth-3 and month-9, ^dBaseline and month-9

CG control group, RT1–3 resistance training one, two or three times a week groups, Ref. reference group

^aSample sizes for baseline, month-3 and month-9, respectively. All outcomes have the same sample size

Table 2 (continued)

^eEffect size compared to RT2 –0.78 (–1.34 to –0.19) and to RT3 –0.54 (–1.09 to 0.03)

^fEffect size compared to RT1 0.60 (0.01–1.16) and to RT3: 0.59 (0.03–1.13)

^gEffect size compared to RT3: 0.65 (0.09–1.20)

Table 3 The effect of intervention on quality of life (QoL), sense of coherence (SoC), and depressive symptoms (DS), analyzed by generalized estimated equations (GEE)

	GEE model 0–3 ^a			GEE model 3–9 ^b			GEE model 0–9 ^c		
	Group <i>p</i>	Time <i>p</i>	Group × time <i>p</i>	Group <i>p</i>	Time <i>p</i>	Group × time <i>p</i>	Group <i>p</i>	Time <i>p</i>	Group × time <i>p</i>
Physical QoL	.570	.087	.064	.276	.662	.828	.291	.323	.685
Psychological QoL	.262	<.001	.814	.439	.832	.421	.161	<.001	.521
Social QoL	.543	.276	.722	.886	.080	.493	.520	.004	.740
Environmental QoL	.578	.308	.048	.076	.469	.025 ^d	.260	.228	.011 ^e
SoC	.241	.002	.110	.057	.178	.550	.222	<.001	.032 ^f
DS	.722	<.001	.840	.912	.348	.429	.979	<.001	.201

Models adjusted by mean aerobic physical activity (min/week) from ^amonths 1–3, ^bmonths 4–9, and ^cmonths 1–9. ^dRT1 had significant differences compared to RT2 ($p = .005$) and RT3 ($p = .036$). ^eRT2 had significant differences compared to CG ($p = .001$), RT1 ($p = .047$), and RT3 ($p = .043$). ^fRT2 had significant differences compared to CG ($p = .006$) and RT3 ($p = .017$)

in maximum strength, so it is possible that initial improvements in strength contributed to the participants' abilities to use their environment. Environmental dimension of QoL includes questions related to home environmental, physical safety, but also (importantly in the context of the present study) the individual's possibility to access leisure activities, health services, and public transport [1]. It is possible that this dimension measures partly similar concepts related to improved functional capacity as the physical dimension, which was borderline statistically significant after 3 months of training. While there was a positive relationship between changes in environmental QoL and strength, the relationship was weak ($r^2 = 0.04$), and no relationships were noted for changes in functional capacity. Consequently, the satisfaction of one's own capabilities in relation to the environment seems not entirely dependent on actual physical changes.

Regarding SoC, the results suggest that SoC improved in the training group after 3 months of training, but the change was not statistically significant compared to CG. However, when comparing the change from baseline to month-9, SoC improved among RT2 compared to CG and RT3. According to these results, it seems that changes in SoC develop slowly, and that the RT intervention needs to be longer than 3 months. SoC is described to be stable and enduring, but not an unchangeable life orientation [6, 40, 41]. Exercise is one of the resources contributing to good SoC [6, 42, 43]: it seems that physical activity can contribute to SoC, but it has to be regular and continuous, part of a lifestyle, to bring about a change. Both SoC and environmental QoL are important health-promoting resources and closely related to overall well-being of older adults [1, 8]. As the results of the

present study indicate that RT is a potential way to improve these relative stable constructs, the importance of RT in promoting both physical and psychological health should be better taken into account.

Previously, two studies observed no differences in the change in QoL between RT frequencies [28, 29]. The results of the present study showed that training twice a week was the most effective frequency to increase environmental QoL and SoC, which were not measured in those previous studies. It seems that improvements in environmental QoL and SoC could not be solely due to improvements in physical functioning and strength; otherwise, also RT3 should have improved during the 9-month period. One explanation for this could be that among previously sedentary older adults, three high-intensive RT sessions per week were too much for their psychological functioning: for example, meta-analysis by Arent et al. [44] showed that exercise interventions with training frequency less than three times a week were more beneficial to older adults' mood than interventions with three or more session per week. Another explanation could be regularity and continuity: perhaps continuing with the same training frequency throughout the intervention was the key element for improvements in RT2. It is possible that a reduced training frequency for the last 6 months have led to the feeling of the loss of benefits, whereas increasing training frequency may have been perceived as too much. It could be speculated that continuing RT with the same frequency over 9 months may have offered a sufficient feeling of continuity. In future, studies investigating the effect of different training frequencies on different areas of psychological functioning should start the intervention directly

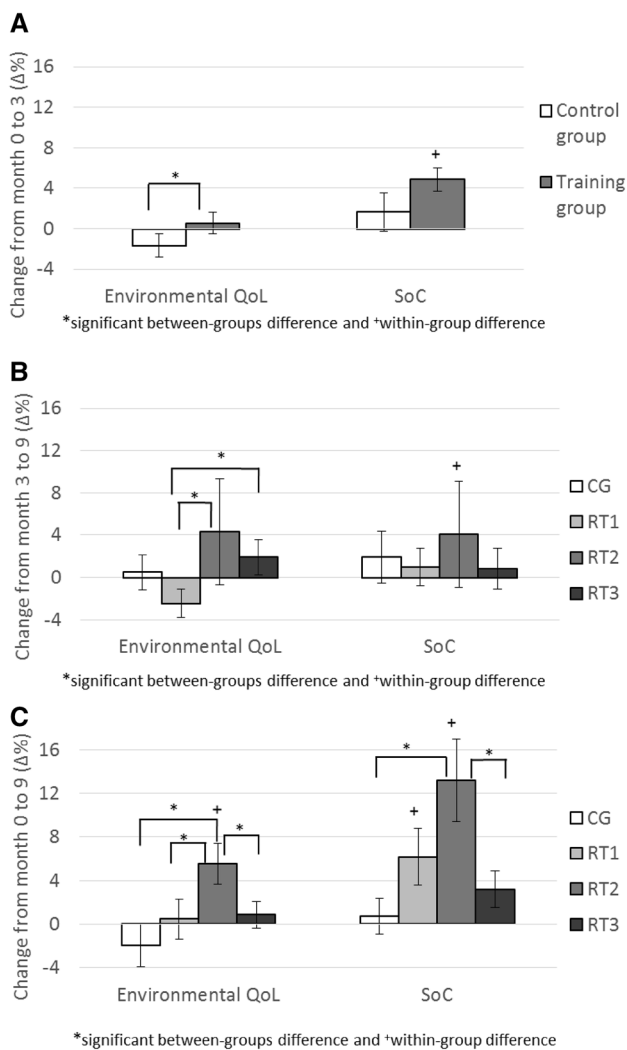


Fig. 2 Study key findings: changes in environmental quality of life (QoL) and sense of coherence (SoC) (mean and SE). CG control group, RT1-3 resistance training one-, two-, or three-times-a-week group

with different frequencies to determine possible between-group differences from the initiation. In addition, it would be important to investigate the effect of changes in training frequency in relation to psychological functioning, because it is quite common in practice to have, e.g., seasonal variation in training [45].

During the initial 3 months of RT, physical and psychological QoL increased and DS decreased in the training group, and in psychological QoL and DS these changes remained to the end of the intervention. These findings are in line with some previous studies, where both shorter (≤ 3 months) [18, 19, 46–48] and longer (≥ 6 months) [20, 25, 49] RT interventions have had positive effects on physical and psychological QoL and DS. On the other hand, RT does not affect QoL according to some previous studies [21–23]. The inconsistent results regarding QoL may be due to differences between studies: for instance, in studies where no intervention effect on QoL occurred [21–23], participants were younger than in those studies where improvements were observed [18–20, 25, 46–49]. Damush and Damush [23] observed that both training and control group seemed to improve in health-related QoL measurements, possibly because the control group was also allocated to social interaction. In the present study, CG was not allocated to social interaction, but they increased their aerobic exercise despite the instructions not to change their lifestyle. These findings may indicate that the participants in the present study were all motivated to improve their health/well-being and may have influenced the findings. For instance, a decrease in DS occurred also in CG. Although the GEE analyses were adjusted by the amount of aerobic training, this lifestyle change may explain why there were no intervention effects on these variables.

These results also suggest that apart from SoC, the largest changes in QoL and DS seemed to occur in the beginning of RT. This is in line with the results of two meta-analyses showing that shorter exercise programs are more effective for psychological functioning than longer ones among older adults [14, 44]. It is possible that individuals perceive

Table 4 Pearson’s correlations (*r*-values) between changes in quality of life (QoL), depressive symptoms (DS), sense of coherence (SoC), strength and functional capacity: changes between baseline and month-3 above diagonal and between baseline and month-9 below diagonal

Absolute change	1	2	3	4	5	6	7	8 ^a
1. Physical QoL	–	.33**	.18	.37***	–.23*	.18	.21*	–.00
2. Psychological QoL	.42***	–	.08	.25*	–.25*	.26**	.08	–.02
3. Social QoL	.23*	.13	–	.12	–.03	–.10	.13	–.09
4. Environmental QoL	.47***	.35***	.04	–	.08	.06	.22*	–.01
5. DS	–.19	–.29**	.00	–.22*	–	–.08	.02	.06
6. SoC	.31**	.25**	.01	.19	–.34**	–	.04	.13
7. Strength	.04	.10	.07	.16	–.10	.05	–	–.28*
8. Functional capacity ^a	.07	.08	–.01	–.00	–.09	.06	–.19	–

* $p < .05$, ** $p < .01$, *** $p < .001$

^aNegative change means better functional capacity

physical benefits of exercise even after short-term training and these improvements in turn contribute to better psychological functioning [14]. This would seem logical given that the largest gains in physical function occur at the beginning of a training intervention and these gains plateau after some months [12], as was also the case in this intervention [31, 32]. In the present intervention, correlations indicate that improvements in strength are slightly associated with psychological functioning after 3 months of intervention, but not after 9 months. It seems that, especially longitudinally, the relationship between exercise and psychological functioning is more complicated; in addition to improvements in physical functioning, there are many other possible mediators that could explain the relationship [17]. Social interaction, master experiences and self-efficacy, stress-removal, and hormonal changes are possible mediators [14, 17]. These mechanisms between RT and psychological functioning may be a fruitful area for future research, since they are not well understood. There is evidence that psychological improvements return to baseline after an intervention, especially among those participants who do not continue RT after the intervention [19, 50]. Therefore, it is important to encourage older adults to participate in RT after the intervention to maintain improvements in psychological functioning also.

The results of this study show that RT influences some areas of psychological functioning but not all. It is also possible that high baseline scores have produced a ceiling effect. At baseline, the QoL domain scores were higher than average in the corresponding age group [2]. SoC scores were in the upper part of a range found in a systematic review [35], and the amount of DS was low in the present study with only 2% scoring over 13 (threshold for mild depression [36]). It is probable that individuals with normal levels of functioning and high baseline health-related QoL scores may not benefit from exercise as much as those with lower baseline scores [13]. In addition, this was a secondary analysis of randomized controlled trial and the power analyses were based on muscle strength and functional capacity, so it is also possible that the trial was unpowered to detect changes in psychological functioning. Nevertheless, previous studies have found significant changes in psychological functioning with similar or even smaller sample sizes [13, 28]. Despite these possible limitations, we still observed changes in environmental QoL and SoC, which gives confidence that these observations reflect true phenomena derived from the RT intervention of the present study. The high baseline scores may also indicate that the present study sample consisted largely of older adults with good psychological functioning and motivation to start training. It is not clear why those with low QoL, weak SoC, and DS did not register to participate in the RT intervention of the present study. In addition, the sample consisted of healthy older adults aged 65–75; hence,

the results should be replicated among participants with a wider age range and different patient groups.

In conclusion, the key observation of this study is that, in addition to well-known physical benefits for aged populations, RT is beneficial for environmental QoL and SoC. Future studies should investigate the cause(s) of these improvements in psychological functioning; for instance, are they consequences of changes in physical characteristics or other psychological constructs? Future trials should also consider training frequency and duration in relation to RT and psychological functioning: identifying when the changes occur, and the appropriate intervention duration and quantity needed to gain the benefits.

Funding This work was supported by the Ministry of Education and Culture of Finland (OKM/56/626/2014). The sponsor had no involvement in the design, participant recruitment, data collection, analysis, or preparation of this paper.

Compliance with ethical standards

Conflict of interest The authors declare that they have no conflict of interest.

Ethical approval All procedures performed in studies involving human participants were in accordance with the ethical standards of the institutional and national research committee and with the 1964 Helsinki declaration and its later amendments or comparable ethical standards.

Informed consent Informed consent was obtained from all individual participants included in the study.

Open Access This article is distributed under the terms of the Creative Commons Attribution 4.0 International License (<http://creativecommons.org/licenses/by/4.0/>), which permits unrestricted use, distribution, and reproduction in any medium, provided you give appropriate credit to the original author(s) and the source, provide a link to the Creative Commons license, and indicate if changes were made.

References

1. World Health Organization. (1998). Development of the World Health Organization WHOQOL-BREF quality of life assessment. The WHOQOL Group. *Psychological Medicine*, 28(3), 551–558.
2. Skevington, S. M., Lotfy, M., & O’Connell, K. A. & WHOQOL Group. (2004). The World Health Organization’s WHOQOL-BREF quality of life assessment: Psychometric properties and results of the international field trial. A report from the WHOQOL group. *Quality of Life Research*, 13(2), 299–310.
3. Eriksson, M., & Lindstrom, B. (2007). Antonovsky’s sense of coherence scale and its relation with quality of life: A systematic review. *Journal of Epidemiology and Community Health*, 61(11), 938–944.
4. Sivertsen, H., Bjørkløf, G. H., Engedal, K., Selbæk, G., & Helvik, A. (2015). Depression and quality of life in older persons: A review. *Dementia and Geriatric Cognitive Disorders*, 40(5–6), 311–339.

5. Chachamovich, E., Fleck, M., Laidlaw, K., & Power, M. (2008). Impact of major depression and subsyndromal symptoms on quality of life and attitudes toward aging in an international sample of older adults. *The Gerontologist*, *48*(5), 593–602.
6. Antonovsky, A. (1987). *Unraveling the mystery of health: How people manage stress and stay well*. San Francisco: Jossey-Bass.
7. Castro-Costa, E., Dewey, M., Stewart, R., Banerjee, S., Huppert, F., Mendonca-Lima, C., et al. (2007). Prevalence of depressive symptoms and syndromes in later life in ten European countries: The SHARE study. *The British Journal of Psychiatry: The Journal of Mental Science*. <https://doi.org/10.1192/bjp.bp.107.036772>.
8. Eriksson, M., & Lindström, B. (2006). Antonovsky's sense of coherence scale and the relation with health: A systematic review. *Journal of Epidemiology and Community Health*. <https://doi.org/10.1136/jech.2005.041616>.
9. World Health Organization. (2010). Global recommendations on physical activity for health. Geneva: World Health Organization.
10. Bennie, J. A., Pedisic, Z., Suni, J. H., Tokola, K., Husu, P., Biddle, S. J., et al. (2017). Self-reported health-enhancing physical activity recommendation adherence among 64,380 Finnish adults. *Scandinavian Journal of Medicine & Science in Sports*. <https://doi.org/10.1111/sms.12863>.
11. Hunter, G. R., McCarthy, J. P., & Bamman, M. M. (2004). Effects of resistance training on older adults. *Sports Medicine*, *34*(5), 329–348.
12. Latham, N. K., Bennett, D. A., Stretton, C. M., & Anderson, C. S. (2004). Systematic review of progressive resistance strength training in older adults. *The Journals of Gerontology Series A: Biological Sciences and Medical Sciences*, *59*(1), 48–61.
13. Rejeski, W. J., & Mihalko, S. L. (2001). Physical activity and quality of life in older adults. *The Journals of Gerontology Series A: Biological Sciences and Medical Sciences*, *56*(2), pp. 23–35.
14. Netz, Y., Wu, M. J., Becker, B. J., & Tenenbaum, G. (2005). Physical activity and psychological well-being in advanced age: A meta-analysis of intervention studies. *Psychology and Aging*, *20*(2), 272–284.
15. Gillison, F. B., Skevington, S. M., Sato, A., Standage, M., & Evangelidou, S. (2009). The effects of exercise interventions on quality of life in clinical and healthy populations; a meta-analysis. *Social Science & Medicine*. <https://doi.org/10.1016/j.socscimed.2009.02.028>.
16. Rhyner, K. T., & Watts, A. (2016). Exercise and depressive symptoms in older adults: A systematic meta-analytic review. *Journal of Aging and Physical Activity*. <https://doi.org/10.1123/japa.2015-0146>.
17. McAuley, E., & Rudolph, D. (1995). Physical activity, aging and psychological well-being. *Journal of Aging and Physical Activity*, *3*, 67–96.
18. Ramirez-Campillo, R., Castillo, A., de la Fuente, C. I., Campos-Jara, C., Andrade, D. C., Alvarez, C., et al. (2014). High-speed resistance training is more effective than low-speed resistance training to increase functional capacity and muscle performance in older women. *Experimental Gerontology*, *58*, 51–57.
19. de Vreede, P. L., van Meeteren, N. L., Samson, M. M., Wittink, H. M., Duursma, S. A., & Verhaar, H. J. (2007). The effect of functional tasks exercise and resistance exercise on health-related quality of life and physical activity. A randomised controlled trial. *Gerontology*, *53*(1), 12–20.
20. Wanderley, F. A. C., Oliveira, N. L., Marques, E., Moreira, P., Oliveira, J., & Carvalho, J. (2013). Aerobic versus resistance training effects on health-related quality of life, body composition, and function of older adults. *Journal of Applied Gerontology*, *34*(3), 143–165.
21. Sillanpaa, E., Hakkinen, K., Holviala, J., & Hakkinen, A. (2012). Combined strength and endurance training improves health-related quality of life in healthy middle-aged and older adults. *International Journal of Sports Medicine*, *33*(12), 981–986.
22. Bonganha, V., Modeneze, D. M., Madruga, V. A., & Vilarta, R. (2012). Effects of resistance training (RT) on body composition, muscle strength and quality of life (QoL) in postmenopausal life. *Archives of Gerontology and Geriatrics*, *54*(2), 361–365.
23. Damush, T. M., & Damush, J. G. J. (1999). The effects of strength training on strength and health-related quality of life in older adult women. *The Gerontologist*, *39*(6), 705–710.
24. Pakkala, I., Read, S., Sipila, S., Portegijs, E., Kallinen, M., Heinonen, A., et al. (2012). Effects of intensive strength-power training on sense of coherence among 60–85-year-old people with hip fracture: A randomized controlled trial. *Aging Clinical and Experimental Research*, *24*(3), 295–299.
25. Kohut, M. L., McCann, D. A., Russell, D. W., Konopka, D. N., Cunnick, J. E., Franke, W. D., et al. (2006). Aerobic exercise, but not flexibility/resistance exercise, reduces serum IL-18, CRP, and IL-6 independent of β -blockers, BMI, and psychosocial factors in older adults. *Brain, Behavior, and Immunity*, *20*(3), 201–209.
26. O'Connor, P. J., Herring, M. P., & Carvalho, A. (2010). Mental health benefits of strength training in adults. *American Journal of Lifestyle Medicine*, *4*(5), 377–396.
27. Dunn, A. L., Trivedi, M. H., & O'Neal, H. A. (2001). Physical activity dose-response effects on outcomes of depression and anxiety. *Medicine and Science in Sports and Exercise*, *33*, S587–S597.
28. Ramirez-Campillo, R., Diaz, D., Martinez-Salazar, C., Valdés-Badilla, P., Delgado-Floody, P., Méndez-Rebolledo, G., et al. (2016). Effects of different doses of high-speed resistance training on physical performance and quality of life in older women: A randomized controlled trial. *Clinical Interventions in Aging*, *11*, 1797–1804.
29. Benton, M. J., & Schlairet, M. C. (2012). Improvements in quality of life in women after resistance training are not associated with age. *Journal of Women & Aging*, *24*(1), 59–69.
30. Walker, S., Haff, G. G., Häkkinen, K., & Newton, R. U. (2017). Moderate-load muscular endurance strength training did not improve peak power or functional capacity in older men and women. *Frontiers in Physiology*. <https://doi.org/10.3389/fphys.2017.00743>.
31. Fernandez-Lezaun, E., Schumann, M., Makinen, T., Kyrolainen, H., & Walker, S. (2017). Effects of resistance training frequency on cardiorespiratory fitness in older men and women during intervention and follow-up. *Experimental Gerontology*. <https://doi.org/10.1016/j.exger.2017.05.012>.
32. Turpela, M., Hakkinen, K., Haff, G. G., & Walker, S. (2017). Effects of different strength training frequencies on maximum strength, body composition and functional capacity in healthy older individuals. *Experimental Gerontology*. <https://doi.org/10.1016/j.exger.2017.08.013>.
33. Liu, C. J., & Latham, N. K. (2009). Progressive resistance strength training for improving physical function in older adults. *The Cochrane Database of Systematic Reviews*, *3*(3), CD002759.
34. von Steinbüchel, N., Lischetzke, T., Gurny, M., & Eid, M. (2006). Assessing quality of life in older people: Psychometric properties of the WHOQOL-BREF. *European Journal of Ageing*, *3*(2), 116–122.
35. Eriksson, M., & Lindström, B. (2005). Validity of Antonovsky's sense of coherence scale: A systematic review. *Journal of Epidemiology and Community Health*, *59*(6), 460–466.
36. Beck, A. T., Steer, R. A., & Brown, G. K. (1996). *Manual for the Beck Depression Inventory-II*. San Antonio, TX: Psychological Corporation.
37. Wang, Y. P., & Gorenstein, C. (2013). Psychometric properties of the Beck Depression Inventory-II: A comprehensive review. *Revista Brasileira De Psiquiatria*, *35*(4), 416–431.

38. Zhang, S., Cao, J., & Ahn, C. (2014). A GEE approach to determine sample size for pre- and post-intervention experiments with dropout. *Computational Statistics & Data Analysis*. <https://doi.org/10.1016/j.csda.2013.07.037>.
39. Cohen, J. (1992). A power primer. *Psychological Bulletin*, *112*(1), 155–159.
40. Feldt, T., Lintula, H., Suominen, S., Koskenvuo, M., Vahtera, J., & Kivimäki, M. (2007). Structural validity and temporal stability of the 13-item sense of coherence scale: Prospective evidence from the population-based HeSSup study. *Quality of Life Research*, *16*(3), 483–493.
41. Hakanen, J. J., Feldt, T., & Leskinen, E. (2007). Change and stability of sense of coherence in adulthood: Longitudinal evidence from the Healthy Child study. *Journal of Research in Personality*, *41*(3), 602–617.
42. Hassmén, P., Koivula, N., & Uutela, A. (2000). Physical exercise and psychological well-being: A population study in Finland. *Preventive Medicine*. <https://doi.org/10.1006/pmed.1999.0597>.
43. Read, S., Aunola, K., Feldt, T., Leinonen, R., & Ruoppila, I. (2005). The relationship between generalized resistance resources, sense of coherence, and health among Finnish people aged 65–69. *European Psychologist*, *10*(3), 244–253.
44. Arent, S. M., Landers, D. M., & Etnier, J. L. (2000). The effects of exercise on mood in older adults: A meta-analytic review. *Journal of Aging and Physical Activity*, *8*(4), 407–430.
45. Matthews, C. E., Freedson, P. S., Hebert, J. R., Stanek, III E. J., Merriam, P. A., Rosal, M. C., et al. (2001). Seasonal variation in household, occupational, and leisure time physical activity: Longitudinal analyses from the seasonal variation of blood cholesterol study. *American Journal of Epidemiology*. <https://doi.org/10.1093/aje/153.2.172>.
46. Levinger, I., Goodman, C., Hare, D. L., Jerums, G., & Selig, S. (2007). The effect of resistance training on functional capacity and quality of life in individuals with high and low numbers of metabolic risk factors. *Diabetes care*, *30*(9), 2205–2210.
47. Levinger, I., Selig, S., Goodman, C., Jerums, G., Stewart, A., & Hare, D. (2011). Resistance training improves depressive symptoms in individuals at high risk for type 2 diabetes. *Journal of Strength and Conditioning Research*. <https://doi.org/10.1519/JSC.0b013e3181f8fd4a>.
48. Singh, N. A., Stavrinou, T. M., Scarbek, Y., Galambos, G., Liber, C., & Fiatarone Singh, M. A. (2005). A randomized controlled trial of high versus low intensity weight training versus general practitioner care for clinical depression in older adults. *The Journals of Gerontology. Series A, Biological Sciences and Medical Sciences*. <https://doi.org/10.1093/gerona/60.6.768>.
49. Ohira, T., Schmitz, K. H., Ahmed, R. L., & Yee, D. (2006). Effects of weight training on quality of life in recent breast cancer survivors: The Weight Training for Breast Cancer Survivors (WTBS) study. *Cancer*. <https://doi.org/10.1002/cncr.21829>.
50. Inaba, Y., Obuchi, S., Arai, T., Satake, K., & Takahira, N. (2008). The long-term effects of progressive resistance training on health-related quality in older adults. *Journal of Physiological Anthropology*, *27*(2), 57–61.