

Elisa Vallius, Timo P. Karjalainen, Mika Marttunen
& Jyri Mustajoki

MORE STRUCTURED AND UNDERSTANDABLE EIA PROCESS

MORE FOCUS ON THE PLANNING PHASE
OF THE EIA AND PRELIMINARY IMPACT
ASSESSMENT

UTILIZATION OF STRUCTURED APPROACHES AND
MULTI-CRITERIA DECISION ANALYSIS IN THE
IMPACT ASSESSMENT

MORE SYSTEMATIC COMPARISON OF
PROJECT ALTERNATIVES

EMPHASIS ON PUBLIC PARTICIPATION AND THE ASSESSMENT
GROUP WORK

RECOMMENDATIONS FOR THE USE OF
MCDA IN EIA AND SEA

MORE FOCUSED AND TRANSPARENT
REPORTING OF ASSESSMENT RESULTS

TESTING AND EVALUATION OF TOOLS AND PRACTICES IN PILOT PROJECTS

ASSESSMENT GROUP

Assessment group consisting of local residents and stakeholder representatives was introduced for the EIA process

- The idea is to form the group before the EIA procedure starts
- Increases open interaction between different parties in the group
- Helps the group members to get deeper and more relevant information

INTERNET-BASED PUBLIC PARTICIPATION

Map-based HARAVA was used in two EIA projects to collect information and opinions from local residents.

- Fairly easy method for the environmental consultant to use
- Works best in densely populated areas
- Technical use of the map-based approaches might still be challenging for some stakeholders

MCDA METHODS

MCDA methods were used in wider-scale planning projects

- Helps to select and prioritize actions
- Makes the assessment more structured and transparent
- Helps to identify and illustrate different viewpoints of stakeholders

FRAMEWORK FOR IMPACT SIGNIFICANCE

Structured framework was used to assess significance of impacts with different nature

- Increases consistency of the assessment
- Helps taking all the characteristics of the impacts into account
- Suits well for reasoning the impacts with high significance – the work load may be too high for less significant impacts → A way to apply should be carefully considered

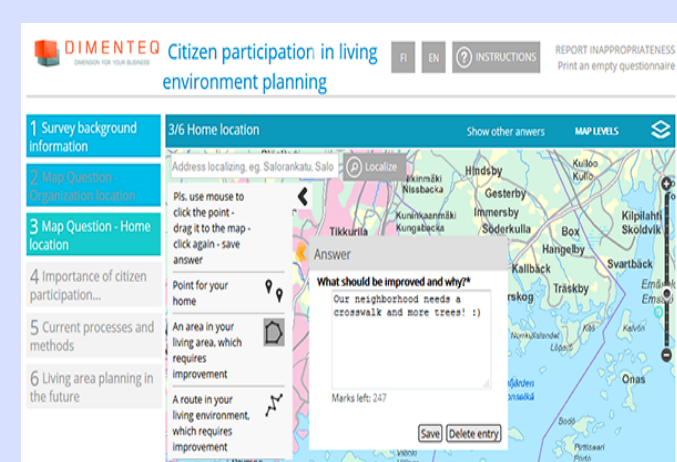
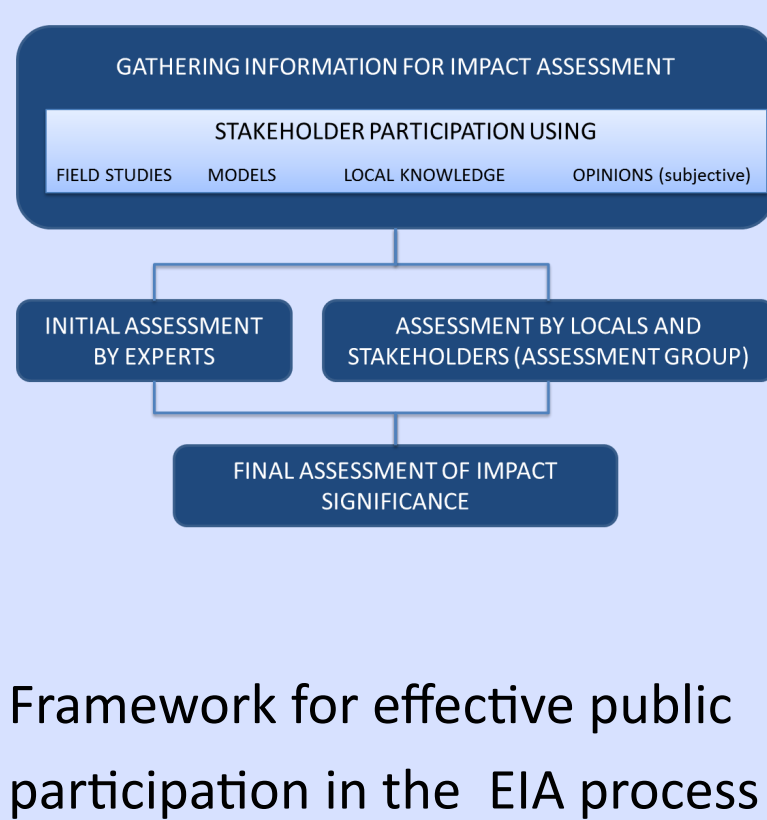
ARVI TOOL

ARVI tool was developed during the first pilot projects and tested in other pilots

- Support for the application of the structured impact assessment framework
- Unifies and clarifies the assessment of different impacts
- Produces various charts and tables to illustrate the results and the comparison of the alternatives

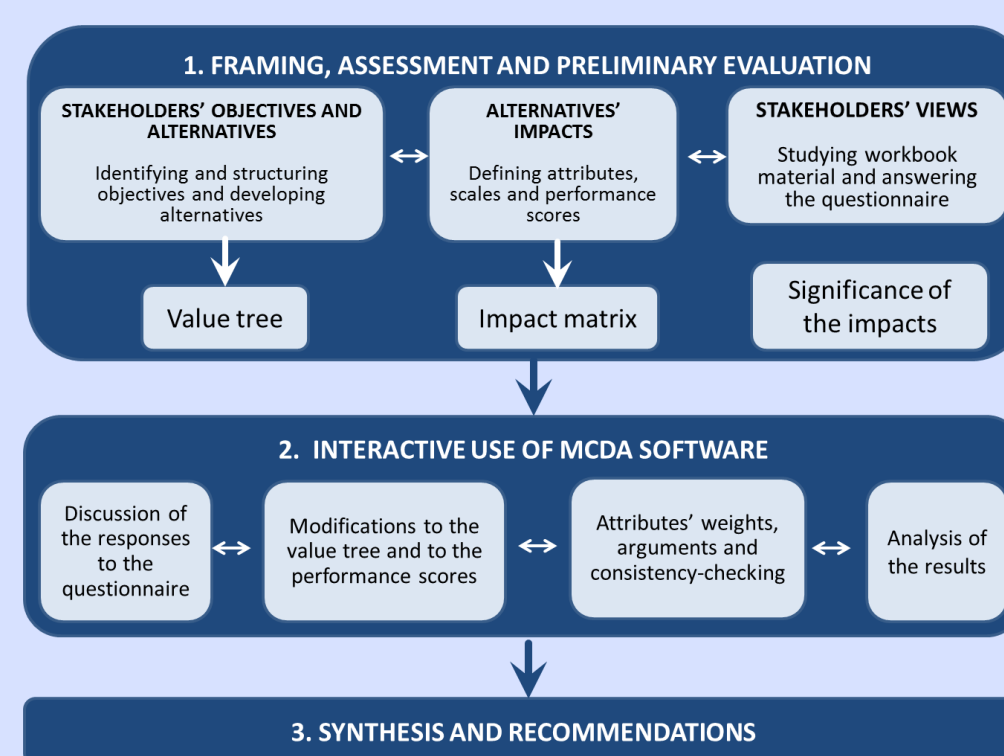
DEVELOPING TOOLS AND PRACTICES

NEW APPROACH TO PUBLIC PARTICIPATION



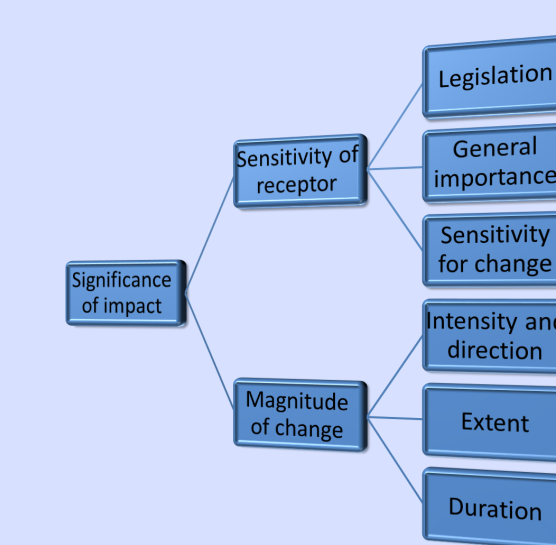
Questionnaire templates for different project types to be used in collecting basic information from public applying map-based survey tool HARAVA (www.eharava.fi/en)

APPLYING MCDA METHODS



Framework for the interactive MCDA process—The Decision Analysis Interview (DAI) approach

TOOLS FOR IMPACT SIGNIFICANCE ASSESSMENT AND EVALUATION OF THE ALTERNATIVES

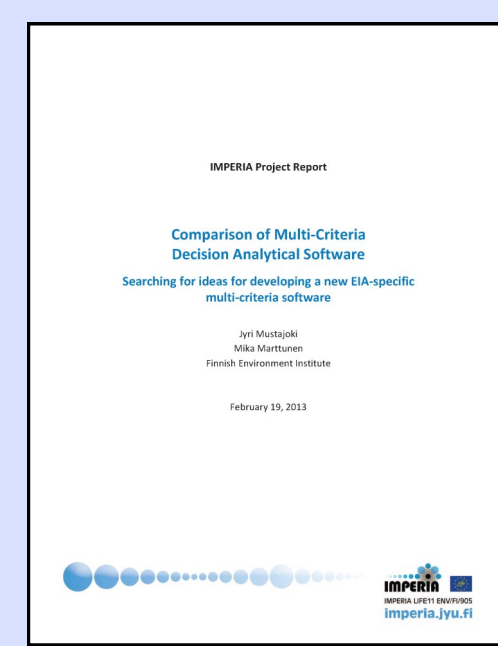


Framework for impact significance assessment and support for its use with the ARVI tool (see separate poster presentation)

IDENTIFICATION OF CHALLENGES, PRACTICES AND METHODS APPLICABLE IN EIA

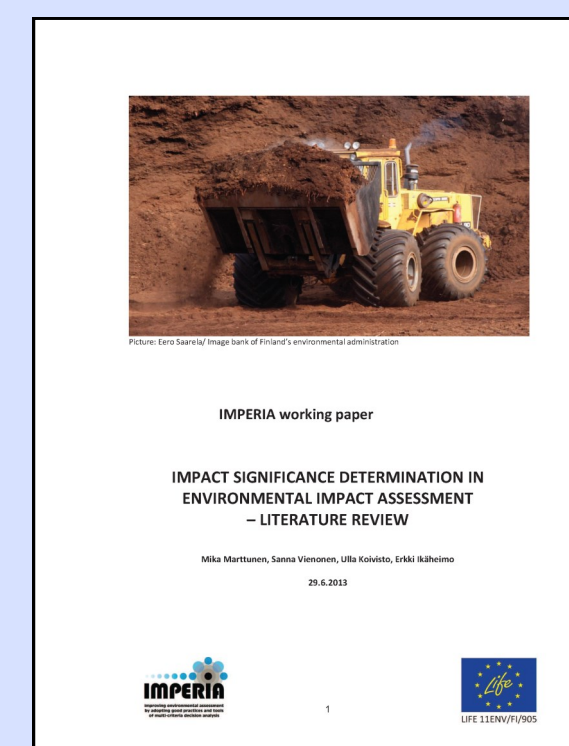
Reviews on

- Guidelines and manuals
- EIA documents
- MCDA tools and software



Reviews on scientific papers on

- Public participation
- MCDA and EIA
- MCDA and CBA



Collecting insights from EIA practitioners

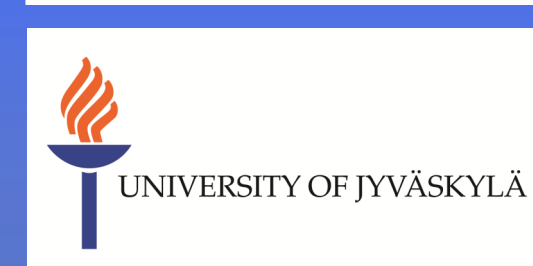
- Internal meetings of the working group
- Seminars, workshops and steering group meetings
- Personal interviews



THE BASIS OF THE PROJECT

IMPERIA project team includes experts of MCDA and EIA from the fields of research, administration and environmental consultancy

- Coordinator: Finnish Environment Institute
- Partner organizations: Thule Institute (Univ. of Oulu), University of Jyväskylä, Ramboll Finland Ltd and SITO Ltd.



Budget of the IMPERIA project is 1.3 million euros and it is financed by

- European Union (50%)
- Finland's Ministry of Environment (6%)
- Finland's Ministry of Agriculture and Forestry (5%)
- Partner organizations (39%)