

**This is an electronic reprint of the original article.
This reprint *may differ* from the original in pagination and typographic detail.**

Author(s): Zhang, Ji; Örmälä, Anni-Maria; Mappes, Johanna; Laakso, Jouni

Title: Top-down effects of a lytic bacteriophage and protozoa on bacteria in aqueous and biofilm phases

Year: 2014

Version:

Please cite the original version:

Zhang, J., Örmälä, A.-M., Mappes, J., & Laakso, J. (2014). Top-down effects of a lytic bacteriophage and protozoa on bacteria in aqueous and biofilm phases. *Ecology and Evolution*, 4(23), 4444-4453. <https://doi.org/10.1002/ece3.1302>

All material supplied via JYX is protected by copyright and other intellectual property rights, and duplication or sale of all or part of any of the repository collections is not permitted, except that material may be duplicated by you for your research use or educational purposes in electronic or print form. You must obtain permission for any other use. Electronic or print copies may not be offered, whether for sale or otherwise to anyone who is not an authorised user.

Top-down effects of a lytic bacteriophage and protozoa on bacteria in aqueous and biofilm phases

Ji Zhang^{1,2,*}, Anni-Maria Örmälä-Odegrip^{1,2,*}, Johanna Mappes¹ & Jouni Laakso^{1,2}

¹Centre of Excellence in Biological Interactions, Department of Biological and Environmental Science, University of Jyväskylä, P.O. Box 35, 40014 Jyväskylä, Finland

²Department of Biosciences, University of Helsinki, P.O. Box 65, 00014 Helsinki, Finland

Keywords

Acanthamoeba castellanii, aquatic bacteria, defense evolution, lytic bacteriophage, microcosm, Semad11, *Serratia marcescens* Db11, *Tetrahymena thermophila*, top-down regulation.

Correspondence

Anni-Maria Örmälä-Odegrip, Centre of Excellence in Biological Interactions, Department of Biological and Environmental Science, University of Jyväskylä, P.O. Box 35, 40014 Jyväskylä, Finland.
Tel: +358 40 805 3898;
Fax: +358 14 617 237;
E-mail: anni-maria.ormala@ju.fi

Funding Information

The study was financed by the Academy of Finland (grants #1130724 and #1255572, Jouni Laakso) and Centre of Excellence in Biological Interactions 2012-2017 (grant #252411, Johanna Mappes). Ji Zhang was funded by the Finnish Cultural Foundation, Biological Interactions Graduate School (BIOINT) and Ellen and Artturi Nyyssönen Foundation.

Received: 10 April 2014; Revised: 26 June 2014; Accepted: 30 September 2014

Ecology and Evolution 2014; 4(23): 4444–4453

doi: 10.1002/ece3.1302

*These authors contributed equally to this work.

Introduction

Bacterial communities are regulated by the availability of resources (“bottom-up control”) and by organisms at higher trophic levels (“top-down control”) (Pace and Cole 1994). Bacteriophages and protozoa are the two

Abstract

Lytic bacteriophages and protozoan predators are the major causes of bacterial mortality in natural microbial communities, which also makes them potential candidates for biological control of bacterial pathogens. However, little is known about the relative impact of bacteriophages and protozoa on the dynamics of bacterial biomass in aqueous and biofilm phases. Here, we studied the temporal and spatial dynamics of bacterial biomass in a microcosm experiment where opportunistic pathogenic bacteria *Serratia marcescens* was exposed to particle-feeding ciliates, surface-feeding amoebas, and lytic bacteriophages for 8 weeks, ca. 1300 generations. We found that ciliates were the most efficient enemy type in reducing bacterial biomass in the open water, but least efficient in reducing the biofilm biomass. Biofilm was rather resistant against bacterivores, but amoebae had a significant long-term negative effect on bacterial biomass both in the open-water phase and biofilm. Bacteriophages had only a minor long-term effect on bacterial biomass in open-water and biofilm phases. However, separate short-term experiments with the ancestral bacteriophages and bacteria revealed that bacteriophages crash the bacterial biomass dramatically in the open-water phase within the first 24 h. Thereafter, the bacteria evolve phage-resistance that largely prevents top-down effects. The combination of all three enemy types was most effective in reducing biofilm biomass, whereas in the open-water phase the ciliates dominated the trophic effects. Our results highlight the importance of enemy feeding mode on determining the spatial distribution and abundance of bacterial biomass. Moreover, the enemy type can be crucially important predictor of whether the rapid defense evolution can significantly affect top-down regulation of bacteria.

major biotic causes of bacterial mortality, although at a given time point and place, one or the other enemy group may dominate (Fuhrman 1999; Suttle 2005). This makes bacteriophages and protozoa potential candidates for biological control of bacterial pathogens (Goodridge and Bisha 2011; Ali and Saleh 2013). However, little is known

about the relative impacts of bacteriophages and protozoa on the bacterial communities in aqueous and biofilm phases. There are many studies on the relative impacts of protozoan predators and bacteriophages in regulating bacterial abundance, but results of these studies are versatile: for example, estimates of virus-induced mortality in natural aquatic systems vary from 20% to 100% (Bettarel *et al.* 2004). The reason for this could be that most of the data are collected from the field (the estimated biomass consumption is often confounded by many other environmental factors, such as temperature, resource availability, and light) (Mathias *et al.* 1995; Wommack *et al.* 1996), and the prey effect size is often measured indirectly (Mcmanus and Fuhrman 1986; Sherr *et al.* 1986; Nygaard and Hessen 1990). Thus, the impact of bacteriophages and protozoa in controlling bacterial biomass should also be studied by directly measuring the biomass changes in controlled experimental settings.

We conducted a microcosm experiment where opportunistic bacterial pathogen *Serratia marcescens* was exposed to lytic bacteriophage Semad11 and to two typical protozoan predators: particle-feeding ciliate *Tetrahymena thermophila* and surface-feeding amoeba *Acanthamoeba castellanii*. To study the impact of protozoa and bacteriophages on the temporal and spatial dynamics of bacterial biomass in aqueous and biofilm phases, the bacteria were cultured either alone, with single enemy or with all the enemies of the enemies in static microcosms, simulating freshwater pond environment, for 8 weeks (approximately 1300 bacterial generations), during which the bacterial biomass in the free-water phase and biofilm phase were measured weekly. Also, the population dynamics of the protozoan predators was followed throughout the experiment. There are many advantages in such experimental settings, including direct measurement of the bacterial biomass, easy manipulation of environmental variables such as nutrition, temperature, and light, possibilities to store and revive the experimental strains that allow direct comparison of ancestral and evolved strains. Such microcosm experiments also allow large population sizes and number of generations (Elena and Lenski 2003).

We hypothesize that: (1) parasitic bacteriophages are initially highly effective in regulating bacterial abundance, whereas the effect of protozoans increases more slowly due to the differences in generation time; (2) The differing feeding modes of the protozoans can create spatial differences in the bacterial community structure: As a surface feeder, the amoeba was expected to reduce predominantly the bacterial biofilm, whereas particle-feeding ciliates reduce the open-water biomass; (3) The evolution of bacteriophage-resistance is predicted to rapidly diminish the bacteriophage effect on bacteria (Buckling and

Rainey 2002; Abedon 2008; Gomez and Buckling 2011), but see: Bohannan and Lenski (2000), Morgan *et al.* (2009)); (4) Theory and previous experimental work on bacteria–ciliate system suggests that the ability of protozoan predators to coevolve is limited compared to the bacterial prey (Friman *et al.* 2008). Thus, we expected that the bacterial prey defense evolves stronger and the biomass regulation by protozoans will slowly diminish in time; and (5) The combined effects of all enemy groups on the bacteria were expected to be most pronounced because that leaves the bacteria least opportunities for spatial refuges and also prevents more effectively the defense evolution if the defenses are costly and group specific.

Our results suggest that the feeding mode of the enemy affects the spatial distribution and abundance of bacteria. Particle-feeding ciliates were the most efficient enemy type in reducing bacterial biomass in the open-water, but least efficient in reducing the biomass in the biofilm, whereas amoebae reduced both bacteria in the open-water phase in biofilm. The effect of amoeba grazing on the bacterial biofilm was most pronounced toward the end of the experiment. The long-term negative effect of bacteriophages on bacterial biomass was almost negligible, although experiments with the ancestral bacteriophages and bacteria showed that bacteriophages had the ability to lyse most of the bacterial biomass in the open-water phase within 24 h. This shows that the effect of top-down regulation by bacteriophages is time-dependent and minor in the long run due to rapid defense evolution, in comparison with top-down regulation by protozoans. The combined effect of the enemies was most pronounced for biofilm biomass.

Materials and Methods

The study species and strains

Bacteria *S. marcescens* strain Db11 (Flyg *et al.* 1980) was kindly provided by Prof. Hinrich Schulenburg, and it was initially isolated from dead *Drosophila* fruit fly. *S. marcescens* is an environmentally growing gram-negative bacterium, that is, also opportunistically pathogenic infecting a broad spectrum of hosts, including plants, corals, nematodes, insects, fish, and mammals (Grimont and Grimont 1978; Flyg *et al.* 1980). *S. marcescens* is commonly present as a free-living form in soil, freshwater, and marine ecosystems (Sutherland *et al.* 2010; Mahlen 2011), and frequently encounters parasitic and predatory enemies.

The predatory particle-feeding ciliate *Tetrahymena thermophila* strain ATCC 30008 (minimum generation time about 2 h (Kiy and Tiedtke 1992)) was obtained from American Type Culture Collection and is routinely

maintained in PPY (proteose peptone yeast medium) at 25°C (Friman *et al.* 2008).

Free-living amoeba *Acanthamoeba castellanii* strain CCAP 1501/10 (generation time about 7 h (Kennedy *et al.* 2012) was obtained from Culture Collection of Algae and Protozoa (Freshwater Biological Association, The Ferry House, Ambleside, United Kingdom) and routinely maintained in PPG (proteose peptone glucose medium [Page 1976]) at 25°C.

Obligatory lytic bacteriophage Semad11 infecting *S. marcescens* Db11 was isolated from a sewage treatment plant in Jyväskylä, Finland in 2009. Semad11 is a T7-like bacteriophage belonging to *Podoviridae* (A-M. Örmälä-Odegrip, unpubl. data) (Fig. 1).

Long-term coculture experiment

NAS (New Cereal Leaf – Page's modified Neff's amoebae saline) medium used in the long-term experiment was prepared as follows: 1 g of cereal grass powder (Aldon Corp., Avon, NY) was boiled in 1 liter of dH₂O for 5 minutes and then filtered through a glass fiber filter (GF/C, Whatman). After cooling down, 5 ml of PAS stock solution II and I was added and restored the final volume with deionized water to 1 liter (Page 1988; La Scola *et al.* 2001; Greub and Raoult 2004).

Before the experiment, the organisms were cultured separately and prepared as follows. For bacterial culture, a single colony of *S. marcescens* strain Db11 was seeded to 80 mL of NAS medium in a polycarbonate Erlenmeyer flask capped with membrane filter (corning). The flask was incubated at 25°C on rotating shaker (120 rpm) for 48 h.

The amoeba and ciliate cells were harvested and washed twice in 40 mL of PAS (Page's amoeba saline) with centrifugation at 1200 × g for 15 min to pellet the cells. After the centrifugation, cells were suspended in PAS and adjusted to final concentration of ca. 10 cells μL⁻¹.

To prepare the bacteriophage stock, LB-soft agar (0.7%) from semi-confluent plates was collected and mixed with LB (4 mL per plate) and incubated for 3.5 h at 37°C. Debris was removed by centrifugation for 20 min at 9682 × g at 5°C. Stock was filtered with 0.2 μm Acrodisc[®] Syringe Filters (Pall). The bacteriophage stock was diluted 1:100 000 in NAS medium, giving approximately 10⁶ PFU mL⁻¹.

The long-term experiment was initiated in 25 cm² polystyrene flasks with nonwetable 0.2-μm hydrophobic filter membrane caps (Sarstedt TC 83.1810.002). Each flask was inoculated with 1 mL of appropriate microorganism (s) depending on the community composition, and the total volume was adjusted to 15 mL with NAS medium. There were five community composition

treatments: (1) bacteria; (2) bacteria + ciliate; (3) bacteria + amoeba; (4) bacteria + bacteriophage; and (5) bacteria + all three enemies. Each treatment was replicated in 36 flasks.

The static liquid cultures were incubated at 25°C. Every 7 days, the contents of each flask were mixed thoroughly, and 50% of the volume was replaced with fresh NAS medium, making the system a pulsed resource type (Friman and Laakso 2011; Friman *et al.* 2011). Before every renewal, four flasks from each treatment were randomly chosen for destructive sampling.

Measurement of bacterial biomass and protozoan population size

Bacterial biomass in the free-water phase was measured from five separate 400 μL samples from each flask, on honeycomb 2 plates (Oy Growth Curves Ab Ltd Helsinki, Finland). The amount of biomass was measured as optical density (OD) at 460–580 nm wavelength using Bioscreen C[®] spectrophotometer (Oy Growth Curves Ab Ltd). The measurements were repeated 10 times at 5-min interval.

To measure the amount of *S. marcescens* biofilm attached to the walls, 15 mL of 1% crystal violet solution (Sigma-Aldrich St. Louis, Missouri, USA) was injected to the flasks. After 10 min, the flasks were rinsed with distilled water for three times, and then, 15 mL of 96% ethanol was added to flasks to dissolve crystal violet from the walls for 24 h (O'toole and Kolter 1998). The amount of formed biofilm was quantified by the absorbance of crystal violet-ethanol solution as above. The amount of formed biofilm was quantified with the OD of crystal violet-ethanol solution at 460–580 nm with Bioscreen C[®] spectrophotometer (Friman and Laakso 2011).

The bacteriophage population density can be measured, for example, by flow cytometry (Brussaard *et al.* 2000). However, the total number of bacteriophage particles in the systems is not a meaningful measure, as the bacteriophage abundance tells nothing about the infectivity of the bacteriophages against bacterial genotypes (or phenotypes) present in the system. However, we confirmed that bacteriophages were present in the microcosms throughout the experiment by taking three independent 500 μL samples from each flask. To remove the host bacteria, amoebas, and ciliates, the samples were treated with chloroform and centrifuged with 17,000 × g for 7 min. Ten microliters spots of supernatant were then added to 1.5% agar plates containing an upper layer of 0.7% LB-agar mixed with 200 μL of overnight grown ancestor Db11 cells, and the plates were incubated overnight in 25°C. All samples from all flasks throughout the experiment formed plaques on the bacterial lawn confirming that bacteriophages did not go extinct during the experiment.

To follow the population dynamics of the amoeba, the flasks were carefully flipped upside down, and eight randomly placed images (total area 18 mm²) from the microcosm bottom wall were digitized with an Olympus SZX microscope (Olympus Optical Co., Ltd. Tokyo, Japan.) (32 × magnification) in the dark-field mode. The cell numbers in each image were counted with a script developed in our lab for the Image Pro Plus software (v. 7.0) (J. Zhang, unpubl.).

To determine the ciliate density, 250 μL of open-water sample was mixed with 10 μL Lugol solution and then injected into a glass cuvette race (depth 2.34 mm) so that the ciliate cells can be instantly stained and fixed. For each sample, eight randomly placed images (total area 18 mm²) were digitized with an Olympus SZX microscope (32 × magnification). The cell numbers in each image were counted with an Image Pro Plus script (Laakso *et al.* 2003).

Short-term experiments with bacteriophage Semad11 and bacteria Db11

Db11 was grown on an LB plate at 25°C for 48 h and a single colony was inoculated into NAS medium. Liquid culture was incubated in shaker (120 rpm) at 25°C for 48 h. Five microliters of bacterial culture was seeded into 200 wells of honeycomb 2 plates (Oy Growth Curves Ab Ltd) containing 400 μL of NAS medium. Hundred wells received simultaneously 5 μL of bacteriophage stock in dH₂O with approximately 10⁴ PFUs. The OD was measured at 460–580 nm wavelength using Bioscreen C[®] spectrophotometer (Oy Growth Curves Ab Ltd). The measurements were repeated at 5-min intervals for 100 h. The presence of infectious Semad11 was confirmed (with ancestral Db11) from the phage-treated wells at the end of measurements.

Statistical analysis

In addition to open water and wall biomass of bacteria and protozoa density, we calculated the ratio of open-water to biofilm biomass and total bacterial biomass in the system. These response variables were measured weekly in samplings where four flasks per treatment were selected for destructive sampling. Thus, we used ANOVA where time and community combination were treated as factors (response variable = community + time + community × time + ε). When needed, the response variables were square root or log-transformed to meet the assumptions of the analysis.

Friedman's test and Wilcoxon signed-rank test was used to compare the impacts of different bacterial enemies and enemy combinations in reducing the bacterial

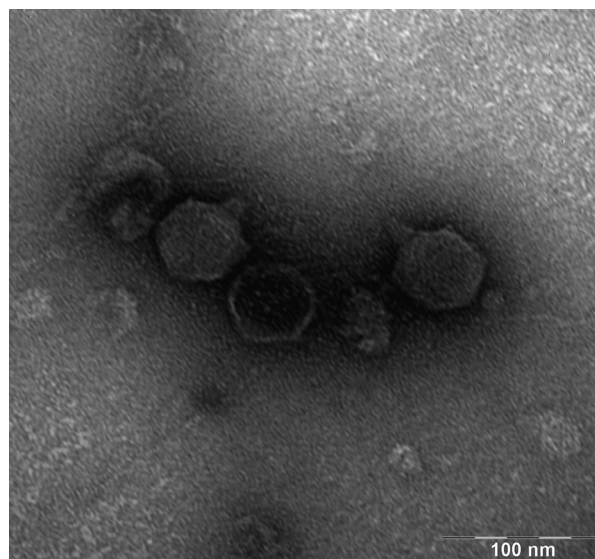


Figure 1. Bacteriophage Semad11.

Table 1. Wilcoxon's signed-rank test showing the efficiency of different enemy compositions in reducing bacterial growth in biofilm and in open water. Sample size in all comparisons is 4.

	Open water		Biofilm	
	Z	P	Z	P
DACP < DA	-5.121	< 0.001	-5.055	< 0.001
DC < DA	-5.121	< 0.001		
DC = DA			-1.605	0.109
DP > DA	-5.160	< 0.001		
DP = DA			-1.285	0.199
DC > DACP			-4.590	< 0.001
DC = DACP	-1.414	0.157		
DP > DACP	-5.039	< 0.001	-3.808	< 0.001
DP < DC			-3.190	< 0.001
DP > DC	-5.058	< 0.001		

biomass in biofilm phase and in free-water phase (Table 1). All the analyses were done with SPSS v. 19 (IBM New York, NY, USA.).

Results

Bacterial biomass dynamics

The protozoans and bacteriophages had highly variable efficiencies in reducing bacterial biomass (OD) in the open-water phase and the efficiency also varied temporally (enemy: $F_{4, 159} = 1049.63$, $P < 0.001$; time: $F_{7, 159} = 16.37$, $P < 0.001$, time × enemy: $F_{28, 159} = 2.59$, $P < 0.001$, Fig. 2A). The OD in the free-water phase was reduced most in the treatments with ciliates (on average 88% during the weeks 1–8), whereas the bacteriophage had only

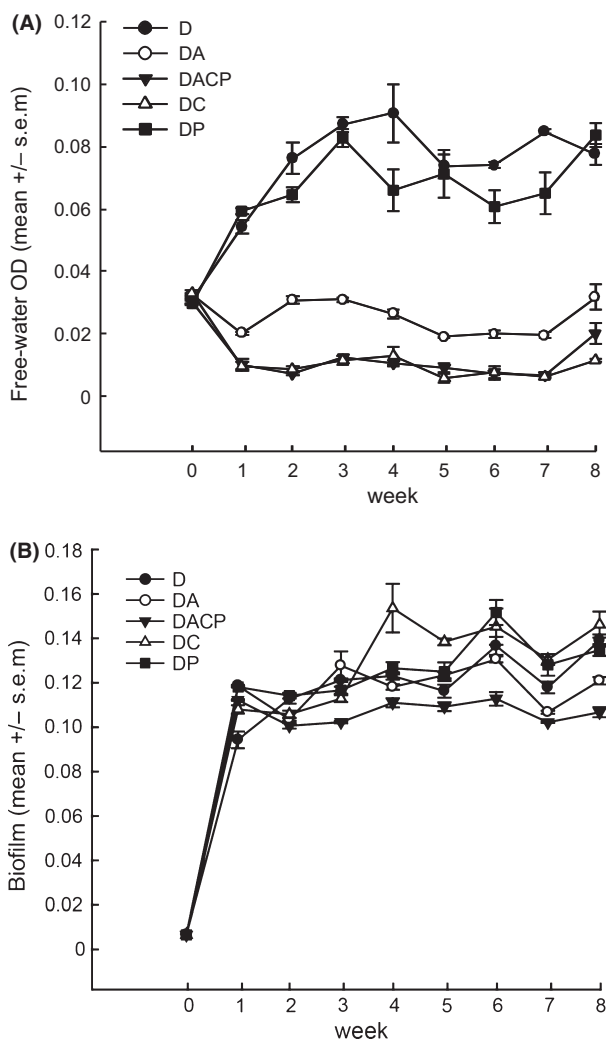


Figure 2. Open-water bacterial biomasses during the 8-week experiment, measured as optical density (OD) (panel A). Panel B represents amount of bacterial biofilm within different treatments. D = *Serratia marcescens* strain Db11; A = amoeba; C = ciliate; P = phage.

a minor effect (on average 9% during the weeks 1–8). The amoeba had an intermediate effect (on average 68% during the weeks 1–8). The effect of all enemies together was the same as the effect of ciliates alone.

The short-term experiment with the ancestor bacteria and the ancestor bacteriophage showed an extremely rapid evolutionary dynamics that was not captured by the one-week sampling frequency of the long-term experiment: In the short-term experiment, we found that the bacteriophage resulted in a > 93% crash of the biomass within 12 h (Fig. 3). However, the bacteria developed defense against the bacteriophages within the first 24 h, and after 100 hours, the bacteriophage-exposed bacterial biomass was close to that of the bacteriophage-free systems.

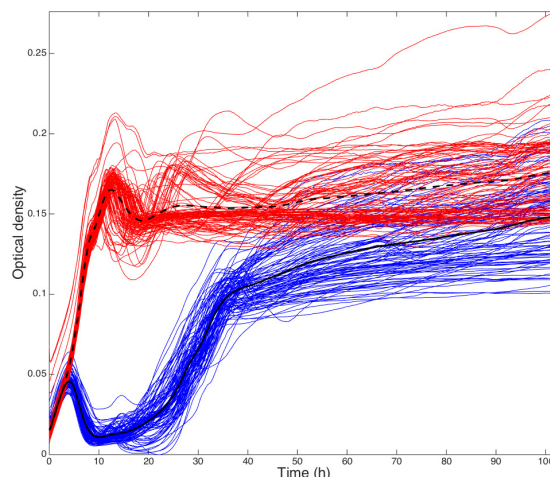


Figure 3. Effect of phage Semad11 on the bacterial biomass of *Serratia marcescens* strain Db11 measured as optical density (OD). Red lines show biomass dynamics without bacteriophages, and blue lines biomass dynamics with the bacteriophage. Black lines show the mean of the two groups. Bacteriophages initially crash the biomass by 93% during the first 15 h, after which the phage-resistant variants emerge. $N = 100$ for both treatment groups.

The amount of attached biofilm increased rapidly during the first week (Fig. 2B). Thereafter, the effect of bacterial enemies on surface attached biofilm biomass depended on the enemy identity and time (enemy: $F_{4, 159} = 55.18, P < 0.0001$; time: $F_{7, 159} = 40.68, P < 0.001$; time × enemy: $F_{28, 159} = 7.60, P < 0.001$). The greatest long-term enemy-induced loss of the biofilm biomass was found in the treatment where all three types of enemies were present and amoebae had an intermediate negative effect on biofilm biomass during the last three weeks. The bacteriophages and ciliates had no effect, or even transiently increased biofilm biomass.

Comparisons of bacterial enemies in reducing the bacterial biomass within open-water and biofilm

We found that different enemies and enemy combinations had a significant effect on the bacterial biomass both in the open water and in biofilm (Chi-square 116, 5, $df = 4, P < 0.001$; Chi-square = 49, 6; $df = 4, P < 0.001$). In the open water, ciliates were the most efficient predators in consuming bacterial biomass because they were alone as efficient as all three enemy types combined (DC = DACP, $Z = -1.414, P = 0.157$). Amoebas and phages were both alone less efficient than ciliates, but amoebas were more efficient than phages. Statistics for all comparisons are shown in the Table 1.

Within the biofilm, the three enemy type combination was ranked the most efficient (all P -values < 0.0001).

Statistics for all pair wise comparisons on biofilm reduction efficiency are shown in the Table 1.

Enemy population dynamics

The ciliate population size was on average higher in the single-enemy treatment than in the treatment mixed with bacteriophage and amoeba (enemy $F_{1, 511} = 57.001$, $P < 0.001$, time $F_{7, 511} = 71.072$, $P < 0.001$, time \times enemy $F_{7, 511} = 14.693$, $P < 0.001$; Fig. 4A). Moreover, in the

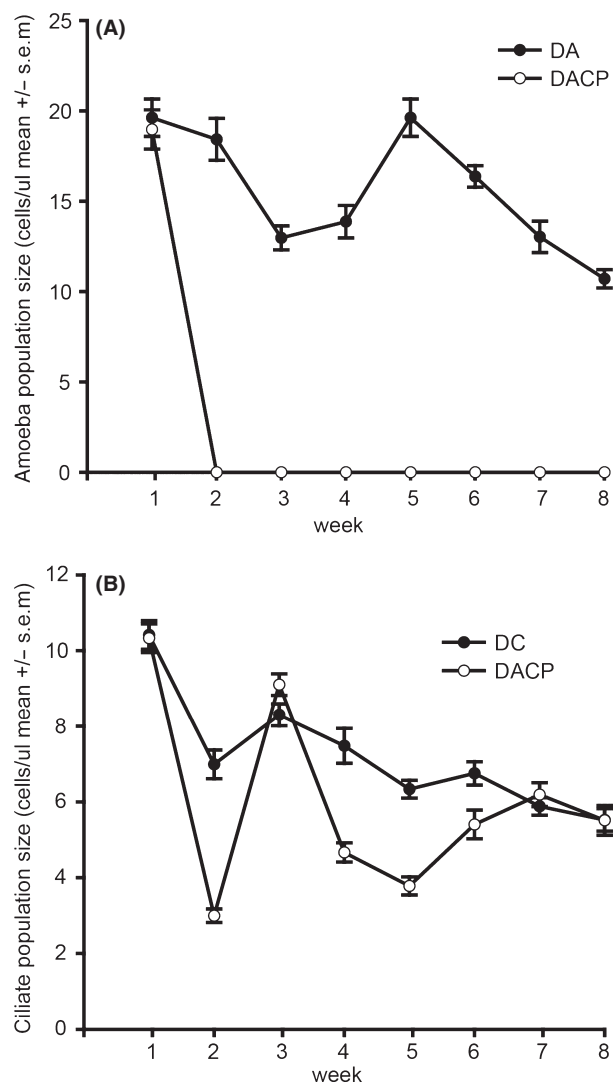


Figure 4. Population dynamics of the ciliate (panel A) and amoeba (panel B), within the different treatments in the 8-week experiment. The amoeba density in the multi-enemy treatment was likely to be underestimated after the first week (see Methods), and the amoeba population might have persisted throughout the experiment at low density or as cysts. D = *Serratia marcescens* strain Db11; A = amoeba; C = ciliate; P = phage.

single-enemy treatment, the ciliate density declined consistently in time, whereas in the multi-enemy treatment population sizes seemed fluctuating more. Amoeba cells in the multi-enemy treatment were not visible under the dark-field microscope after the first week. They persisted in the single-enemy treatment and also declined in time (enemy $F_{1, 282} = 561.079$, $P < 0.001$, time $F_{8, 282} = 28.687$, $P < 0.001$, time \times enemy $F_{24, 282} = 14.075$, $P < 0.001$; Fig. 4B).

Bacteriophages were present in all microcosms throughout the experiment, which was verified by infecting the ancestor bacteria with the bacteriophage populations isolated from the end of the experiment (see Methods).

Discussion

Top-down control by protozoan predators and parasitic bacteriophages is the most prominent cause of bacterial mortality in natural microbial communities (Fuhrman 1999; Jürgens and Matz 2002), and thus, phages and protozoa are considered as potential biocontrol agents against bacterial pathogens (Goodridge and Bisha 2011; Ali and Saleh 2013). However, the relative importance of these bacterial enemies is unclear due to methodological difficulties in assessing the relative mortalities and uncontrollable environmental variables. Our coculture experiment in static microcosms with protozoans (amoeba *A. castellanii*, ciliate *T. thermophila*), bacteriophages (lytic bacteriophage Semad11) and environmentally growing opportunistic pathogenic bacteria (*S. marcescens* strain Db11) demonstrated that bacterial enemies with different feeding strategies had very different spatial and temporal effects on the bacterial population.

Bacteriophages and protozoan predators use quite different strategies to utilize bacterial biomass. For example, most flagellates and ciliates are specialized in preying on suspended bacteria, whereas amoebae are thought to almost exclusively feed on biofilm (Rodríguez-Zaragoza 1994; Molmeret et al. 2005); but see Bowers (1977)). As for bacteriophages are parasites that attack bacteria in the free water as well as those hidden in biofilms (Hanlon et al. 2001). The capability of a bacteriophage to infect biofilms (formed by an otherwise susceptible bacterial host) depends on viral access on bacterial surface, which in turn is determined by the structure of biofilm and the capability of bacteriophage to degrade the extracellular polymers forming the matrix of the biofilm (Sutherland et al. 2004; LaBrie et al. 2010).

Although the assays for assessing the amount of biomass in the open water and biofilm were different, and thus not directly comparable, by comparing the ranks of the bacterial enemies within the two results, we can see

that treatment with all three enemies is ranked equal with the treatment with ciliates alone. Thus, ciliates can be concluded to account for the strongest long-term negative effect in reducing bacterial biomass in the open water, but not in biofilm (Table 1). Ciliates use oral groove to engulf suspended bacteria and select the prey mostly based on size (Fenchel 1980; Gonzalez *et al.* 1990; Christaki *et al.* 1998), and it has been shown that *Tetrahymena* spp. ciliates can also readily consume biofilms formed by *Pseudomonas* spp. or *Serratia* spp. (Eisenmann *et al.* 1998; Weitere *et al.* 2005) and change the composition and abundance of bacteria in the biofilm (Parry *et al.* 2007; Dopheide *et al.* 2011). However, we did not find that the bacterial biofilm biomass dynamics in the ciliate–bacteria or bacteriophage–bacteria treatments differed from bacteria cultured alone during the eight-week experiment. One explanation could be that when the ciliates feed the open-water biomass, it frees the common bacterial resources that can increase the growth of the biofilm biomass and thus compensate for the potential feeding of the biofilm biomass by ciliates. However, the lowest amount of biofilm was found in the system where ciliates, amoebae, and bacteriophages were all present. These results indicate that the effect of ciliates and bacteriophages on the amount of biofilm was of significance only when the amoebae were present (Fig. 2B and Table 1).

Contrary to ciliates, amoebae are thought to be specialized surface grazers (Rodriguez-Zaragoza 1994; Molmeret *et al.* 2005). In our experiment, the surface grazing effect was visible on biofilm biomass. However, this reduction was most pronounced during the three final weeks of our experiment (Fig. 2B). Notably, amoebae were also able to significantly reduce the bacterial biomass in the free water (Fig. 2A and Table 1). One explanation is that the amoebae consumed the suspended bacteria through pinocytosis (Bowers 1977; Vogel *et al.* 1980). This niche overlaps with ciliates is also consistent with the observed ciliate population dynamics: The ciliate population size was on average higher in the single-enemy treatment than in the treatment mixed with bacteriophage and amoeba, and within the multienemy treatment, the ciliate densities transiently increased right after the decline of amoeba populations (Fig. 4A). The amoeba decline was severe, as the cells were not detectable with the dark-field microscope after 1 week (Fig. 4B). Although dark-field microscopy is a good tool to observe amoeba cells in the normal conditions (Palsson *et al.* 1997), it might not be sufficient to count the amoeba cells in the condition of starvation. Thus, the amoeba density was likely to be somewhat underestimated, especially in conditions where competition for food was severe, that is, the amoeba population might have persisted throughout the experiment as atypical form in the treatment with all enemies. The strong

decline of amoeba also indicates that the competition between ciliates and amoeba was asymmetric in favor of the ciliates, which are known to be efficient predators of bacteria under similar microcosm conditions (Meyer and Kassen 2007; Friman *et al.* 2008; Friman and Buckling 2013).

In contrast to the predators, the lytic bacteriophages had the least long-term effect on bacterial density in the open water and had no effect on the amount of the attached biofilm. However, when looking at the short-term dynamics between Semad11 and Db11, bacteriophages proved to be extremely effective in killing their hosts. Our separate short-term experiments demonstrated an initial 93% decrease of the bacterial population in 12 h. High mortality risk is likely to create strong selection pressure on the host defense, resulting in bacteria becoming involved in a tight coevolutionary arms-race dynamics with bacteriophages, where the fitness of a particular host and parasite genotype depends on time (Van Valen 1973; Dawkins and Krebs 1979; Buckling and Rainey 2002; Friman *et al.* 2008). Dynamics corresponding to this scenario were also observed in our experiment; the initial rapid decrease of bacterial abundance was only temporary, as phage-resistant bacteria were capable of restoring the populations close to the previous size within 100 h (Fig. 3). Thus, the observed appearance of phage-resistance seemed to effectively weaken the trophic link between the parasitic phages and their host bacteria.

This finding also demonstrates one of the major challenges in phage therapy – the rapid evolution of defense (Chan *et al.* 2013). However, the results also show, that although phage-resistant bacteria quickly emerge, the bacterial populations were never able to reach to level of the control group where the bacteria were grown alone (Fig. 2A). This could be because of the emergence of a new phage genotype limiting the gross bacterial population, presumably as a result of evolutionary arms race (Gomez and Buckling 2011; Stern and Sorek 2011). Alternatively, phage-resistance could be phenotypic (e.g., masking of phage-receptors on the cell surface), (Bull *et al.* 2014), resulting in a trade-off with the growth ability. It has been shown, although that the use of a phage cocktail instead of a single phage delays the appearance of phage-resistant bacterial variants (Levin and Bull 2004; Gu *et al.* 2012), which brings about an interesting future prospect for our multienemy experimental approach.

The cost of phage resistance is known to be dependent on several factors, such as the genetic background of the phage, the number of the phage strains during the infection, and the environmental conditions (Bohannan and Lenski 2000; Lennon *et al.* 2007; Lopez-Pascua and Buckling 2008; Koskella *et al.* 2012). For example, in low nutrient environment such as soil and pond water, the

costs for phage resistance are likely to be high (Lopez-Pascua and Buckling 2008; Gomez and Buckling 2011). Thus, the fitness costs constraining bacterial growth could to explain the small but persisting long-term negative effect on free-water phase biomass of the bacteriophages in our experiment.

Both amoeba and ciliate population sizes slowly declined during the experiment. Similar results were found in previous studies with similar predator-prey system, and the decline could attribute to the evolutionary increase in prey defense, while there is little evidence that the predator coevolved (Friman *et al.* 2008; Friman and Laakso 2011). Alternatively, the culture conditions could have been deteriorating due to an unknown factor in the experiment settings, resulting in the decline of amoeba and ciliate populations. However, unlike with the phages, the potential evolution of defense is not associated markedly to the ability of the predators to keep the bacterial populations in check. In our experiment, we also found that ciliate population size fluctuated more in the multi-enemy system, suggesting in nature things might be more complicated due to the interactions of different bacterial consumers (Fig. 4A). The increased fluctuations in our case probably resulted from the declined population size of the amoeba, due to strong competition by the ciliates. Moreover, it has been demonstrated that the host-parasite coevolution proceeds differently in the presence of predator than without it (Friman and Buckling 2013), and there may thus be also other eco-evolutionary reasons for the observed fluctuations.

To conclude, our results suggest that the top-down effects on bacterial prey depend heavily on the feeding mode of the enemy. Ciliates were very efficient open-water predators, whereas the amoeba was able to reduce bacterial biofilm and also the open-water biomass. This could lead to partial and asymmetric overlap in resource use and possibly to the decline of amoeba and to the observed short-term effect on ciliate population dynamics. We also found that while the bacteriophages were super-efficient parasites in the short-term, the long-term effects of the bacteriophage were negligible. This result arose from extremely rapid appearance of phage resistance and weak ability of the bacteriophages to counteract it. Our results highlight that although data from the single-enemy experiments with bacteria and their predators or their parasites are valuable, they may not be able to reflect the processes occurring in multi-enemy food webs due to the interactions between the enemies. Moreover, the rapid evolutionary dynamics between the enemy and the host can radically affect the relative importance of predatory protozoa versus the parasitic phages as regulators of the bacterial abundance and spatial distribution.

From the viewpoint of biological control of bacterial pathogens, our results highlight that a single lytic bacteriophage can be effective in the short-term, whereas ciliates and amoeba have more persistent effects on the bacteria. With this said, we suggest that bacteriophages and protozoans together could offer a novel option for sustainable and safe antimicrobial therapy of environmentally growing bacteria. An example of such bacterium with major implications in aquaculture is the fish pathogen *Flavobacterium columnare*, the causative agent of columnaris disease, resulting in substantial financial losses in fish farming annually (for a review see Declercq *et al.* 2013).

Acknowledgments

We thank Tarmo Ketola and Jani Anttila for comments on the manuscript and Kalevi Viipale for intensive discussions on the conceptual issues. The study was financed by the Academy of Finland (grants #1130724 and #1255572, J. Laakso) and Centre of Excellence in Biological Interactions 2012–2017 (grant #252411, J. Mappes). J. Zhang was funded by the Finnish Cultural Foundation, Biological Interactions Graduate School (BIOINT) and Ellen and Artturi Nyssönen Foundation.

Conflict of Interest

None declared.

References

- Abedon, S. T.. 2008. Bacteriophage ecology: Population growth, evolution, and impact of bacterial viruses. Cambridge University Press, New York.
- Ali, T., and D. Saleh. 2013. A simplified experimental model for clearance of some pathogenic bacteria using common bacterivorous ciliated spp. in Tigris river. *Appl. Environ. Microbiol.* 4:63–71.
- Bettarel, Y., T. Sime-Ngando, C. Amblard, and J. Dolan. 2004. Viral activity in two contrasting lake ecosystems. *Appl. Environ. Microbiol.* 70:2941–2951.
- Bohannan, B. J. M., and R. E. Lenski. 2000. Linking genetic change to community evolution: insights from studies of bacteria and bacteriophage. *Ecol. Lett.* 3:362–377.
- Bowers, B. 1977. Comparison of pinocytosis and phagocytosis in *Acanthamoeba castellanii*. *Exp. Cell Res.* 110:409–417.
- Brussaard, C. P., D. Marie, and G. Bratbak. 2000. Flow cytometric detection of viruses. *J. Virol. Methods* 85:175–182.
- Buckling, A., and P. B. Rainey. 2002. Antagonistic coevolution between a bacterium and a bacteriophage. *Proc. Biol. Sci.* 269:931–936.
- Bull, J. J., C. S. Vegge, M. Schmerer, W. N. Chaudhry, and B. R. Levin. 2014. Phenotypic resistance and the dynamics of bacterial escape from phage control. *PLoS ONE* 9:e94690.

- Chan, B. K., S. T. Abedon, and C. Loc-Carrillo. 2013. Phage cocktails and the future of phage therapy. *Future Microbiol.* 8:769–783.
- Christaki, U., J. R. Dolan, S. Pelegri, and F. Rassoulzadegan. 1998. Consumption of picoplankton-size particles by marine ciliates: effects of physiological state of the ciliate and particle quality. *Limnol. Oceanogr.* 43: 458–464.
- Dawkins, R., and J. R. Krebs. 1979. Arms races between and within species. *Proc. Biol. Sci.* 205:489–511.
- Declercq, A. M., F. Haesebrouck, W. Van den Broeck, P. Bossier, and A. Decostere. 2013. Columnaris disease in fish: a review with emphasis on bacterium-host interactions. *Vet. Res.* 44:27.
- Dopheide, A., G. Lear, R. Stott, and G. Lewis. 2011. Preferential feeding by the ciliates *Chilodonella* and *Tetrahymena* spp. and effects of these protozoa on bacterial biofilm structure and composition. *Appl. Environ. Microbiol.* 77:4564–4572.
- Eisenmann, H., H. Harms, R. Meckenstock, E. I. Meyer, and A. J. Zehnder. 1998. Grazing of *Tetrahymena* sp. on adhered bacteria in percolated columns monitored by in situ hybridization with fluorescent oligonucleotide probes. *Appl. Environ. Microbiol.* 64:1264–1269.
- Elena, S. F., and R. E. Lenski. 2003. Evolution experiments with microorganisms: the dynamics and genetic bases of adaptation. *Nat. Rev. Genet.* 4:457–469.
- Fenchel, T. 1980. Suspension feeding in ciliated protozoa: functional response and particle size selection. *Microb. Ecol.* 6:1–11.
- Flyg, C., K. Kenne, and H. G. Boman. 1980. Insect pathogenic properties of *Serratia marcescens*: phage-resistant mutants with a decreased resistance to *Cecropia* immunity and a decreased virulence to *Drosophila*. *J. Gen. Microbiol.* 120:173–181.
- Friman, V. P., and A. Buckling. 2013. Effects of predation on real-time host-parasite coevolutionary dynamics. *Ecol. Lett.* 16:39–46.
- Friman, V. P., and J. Laakso. 2011. Pulsed-resource dynamics constrain the evolution of predator-prey interactions. *Am. Nat.* 177:334–345.
- Friman, V. P., T. Hiltunen, J. Laakso, and V. Kaitala. 2008. Availability of prey resources drives evolution of predator-prey interaction. *Proc. Biol. Sci.* 275:1625–1633.
- Friman, V. P., J. Laakso, M. Koivu-Orava, and T. Hiltunen. 2011. Pulsed-resource dynamics increase the asymmetry of antagonistic coevolution between a predatory protist and a prey bacterium. *J. Evol. Biol.* 24:2563–2573.
- Fuhrman, J. A. 1999. Marine viruses and their biogeochemical and ecological effects. *Nature* 399:541–548.
- Gomez, P., and A. Buckling. 2011. Bacteria-phage antagonistic coevolution in soil. *Science* 332:106–109.
- Gonzalez, J. M., E. B. Sherr, and B. F. Sherr. 1990. Size-selective grazing on bacteria by natural assemblages of estuarine flagellates and ciliates. *Appl. Environ. Microbiol.* 56:583–589.
- Goodridge, L. D., and B. Bisha. 2011. Phage-based biocontrol strategies to reduce foodborne pathogens in foods. *Bacteriophage* 1:130–137.
- Greub, G., and D. Raoult. 2004. Microorganisms resistant to free-living amoebae. *Clin. Microbiol. Rev.* 17:413–433.
- Grimont, P. A., and F. Grimont. 1978. The genus *Serratia*. *Ann. Rev. Microbiol.* 32:221–248.
- Gu, J., X. Liu, Y. Li, W. Han, L. Lei, Y. Yang, et al. 2012. A method for generation phage cocktail with great therapeutic potential. *PLoS ONE* 7:e31698.
- Hanlon, G. W., S. P. Denyer, C. J. Olliff, and L. J. Ibrahim. 2001. Reduction in exopolysaccharide viscosity as an aid to bacteriophage penetration through *Pseudomonas aeruginosa* biofilms. *Appl. Environ. Microbiol.* 67:2746–2753.
- Jürgens, K., and C. Matz. 2002. Predation as a shaping force for the phenotypic and genotypic composition of planktonic bacteria. *Antonie Leeuwenhoek* 81:413–434.
- Kennedy, G. M., J. H. Morisaki, and P. A. Champion. 2012. Conserved mechanisms of *Mycobacterium marinum* pathogenesis within the environmental amoeba *Acanthamoeba castellanii*. *Appl. Environ. Microbiol.* 78:2049–2052.
- Kiy, T., and A. Tiedtke. 1992. Mass cultivation of *Tetrahymena-Thermophila* yielding high cell densities and short generation times. *Appl. Microbiol. Biotechnol.* 37: 576–579.
- Koskella, B., D. M. Lin, A. Buckling, and J. N. Thompson. 2012. The costs of evolving resistance in heterogeneous parasite environments. *Proc. Biological Sci.* 279:1896–1903.
- La Scola, B., L. Mezi, P. J. Weiller, and D. Raoult. 2001. Isolation of *Legionella anisa* using an amoebic coculture procedure. *J. Clin. Microbiol.* 39:365–366.
- Laakso, J., K. Löytynoja, and V. Kaitala. 2003. Environmental noise and population dynamics of the ciliated protozoa *Tetrahymena thermophila* in aquatic microcosms. *Oikos* 102:663–671.
- Labrie, S. J., J. E. Samson, and S. Moineau. 2010. Bacteriophage resistance mechanisms. *Nat. Rev. Microbiol.* 8:317–327.
- Lennon, J. T., S. A. M. Khatana, M. F. Marston, and J. B. H. Martiny. 2007. Is there a cost of virus resistance in marine cyanobacteria? *ISME J.* 1:300–312.
- Levin, B. R., and J. J. Bull. 2004. Population and evolutionary dynamics of phage therapy. *Nat. Rev. Microbiol.* 2:166–173.
- Lopez-Pascua, L. D. C., and A. Buckling. 2008. Increasing productivity accelerates host-parasite coevolution. *J. Evol. Biol.* 21:853–860.
- Mahlen, S. D. 2011. *Serratia* infections: from military experiments to current practice. *Clin. Microbiol. Rev.* 24:755–791.
- Mathias, C. B., A. Kirschner, and B. Velimirov. 1995. Seasonal variations of virus abundance and viral

- control of the bacterial production in a backwater system of the Danube river. *Appl. Environ. Microbiol.* 61:3734–3740.
- Mcmanus, G. B., and J. A. Fuhrman. 1986. Bacterivory in seawater studied with the use of inert fluorescent particles. *Limnol. Oceanogr.* 31:420–426.
- Meyer, J. R., and R. Kassen. 2007. The effects of competition and predation on diversification in a model adaptive radiation. *Nature* 446:432–435.
- Molmeret, M., M. Horn, M. Wagner, M. Santic, and Y. Abu Kwaik. 2005. Amoebae as training grounds for intracellular bacterial pathogens. *Appl. Environ. Microbiol.* 71:20–28.
- Morgan, A. D., R. C. Maclean, and A. Buckling. 2009. Effects of antagonistic coevolution on parasite-mediated host coexistence. *J. Evol. Biol.* 22:287–292.
- Nygaard, K., and D. O. Hessen. 1990. Use of C-14 protein-labeled bacteria for estimating clearance rates by heterotrophic and mixotrophic flagellates. *Mar. Ecol. Prog. Ser.* 68:7–14.
- O'toole, G. A., and R. Kolter. 1998. Initiation of biofilm formation in *Pseudomonas fluorescens* WCS365 proceeds via multiple, convergent signalling pathways: a genetic analysis. *Mol. Microbiol.* 28:449–461.
- Pace, M. L., and J. J. Cole. 1994. Comparative and experimental approaches to top-down and bottom-up regulation of bacteria. *Microb. Ecol.* 28:181–193.
- Page, F. C.. 1976. An illustrated key to freshwater and soil amoebae: With notes on cultivation and ecology. Freshwater Biological Association, Cumbria.
- Page, F. C.. 1988. A new key to freshwater and soil Gymnamoebae with instructions for culture. Freshwater Biological Association, Cumbria.
- Palsson, E., K. J. Lee, R. E. Goldstein, J. Franke, R. H. Kessin, and E. C. Cox. 1997. Selection for spiral waves in the social amoebae *Dictyostelium*. *Proc. Natl Acad. Sci. USA* 94: 13719–13723.
- Parry, J. D., A. K. Holmes, M. E. Unwin, and J. Laybourn-Parry. 2007. The use of ultrasonic imaging to evaluate the effect of protozoan grazing and movement on the topography of bacterial biofilms. *Lett. Appl. Microbiol.* 45:364–370.
- Rodriguez-Zaragoza, S. 1994. Ecology of free-living amoebae. *Crit. Rev. Microbiol.* 20:225–241.
- Sherr, B. F., E. B. Sherr, T. L. Andrew, R. D. Fallon, and S. Y. Newell. 1986. Trophic interactions between heterotrophic protozoa and bacterioplankton in estuarine water analyzed with selective metabolic-inhibitors. *Mar. Ecol. Prog. Ser.* 32:169–179.
- Stern, A., and R. Sorek. 2011. The phage-host arms race: shaping the evolution of microbes. *BioEssays* 33:43–51.
- Sutherland, I. W., K. A. Hughes, L. C. Skillman, and K. Tait. 2004. The interaction of phage and biofilms. *FEMS Microbiol. Lett.* 232:1–6.
- Sutherland, K. P., J. W. Porter, J. W. Turner, B. J. Thomas, E. E. Looney, T. P. Luna, et al. 2010. Human sewage identified as likely source of white pox disease of the threatened Caribbean elkhorn coral, *Acropora palmata*. *Environ. Microbiol.* 12:1122–1131.
- Suttle, C. A. 2005. Viruses in the sea. *Nature* 437:356–361.
- Van Valen, L.. 1973. A new evolutionary law. *Evolution. Theor.* 1:1–33.
- Vogel, G., L. Thilo, H. Schwarz, and R. Steinhart. 1980. Mechanism of phagocytosis in *Dictyostelium discoideum*: phagocytosis is mediated by different recognition sites as disclosed by mutants with altered phagocytotic properties. *J. Cell Biol.* 86:456–465.
- Weitere, M., T. Bergfeld, S. A. Rice, C. Matz, and S. Kjelleberg. 2005. Grazing resistance of *Pseudomonas aeruginosa* biofilms depends on type of protective mechanism, developmental stage and protozoan feeding mode. *Environ. Microbiol.* 7:1593–1601.
- Wommack, K. E., R. T. Hill, T. A. Muller, and R. R. Colwell. 1996. Effects of sunlight on bacteriophage viability and structure. *Appl. Environ. Microbiol.* 62:1336–1341.