

Jocelyn M. Choo

Connection between Temperature,  
Larval Production, Virulence  
and Geographical Distribution of  
*Rhipidocotyle* Parasites Infecting the  
Duck Mussel, *Anodonta anatina*



Jocelyn M. Choo

Connection between Temperature,  
Larval Production, Virulence  
and Geographical Distribution of  
*Rhipidocotyle* Parasites Infecting the  
Duck Mussel, *Anodonta anatina*

Esitetään Jyväskylän yliopiston matemaattis-luonnontieteellisen tiedekunnan suostumuksella  
julkisesti tarkastettavaksi yliopiston Ambiotica-rakennuksen salissa YAA303,  
joulukuun 18. päivänä 2015 kello 12.

Academic dissertation to be publicly discussed, by permission of  
the Faculty of Mathematics and Science of the University of Jyväskylä,  
in building Ambiotica, hall YAA303, on December 18, 2015 at 12 o'clock noon.



UNIVERSITY OF JYVÄSKYLÄ

JYVÄSKYLÄ 2015

Connection between Temperature,  
Larval Production, Virulence  
and Geographical Distribution of  
*Rhipidocotyle* Parasites Infecting the  
Duck Mussel, *Anodonta anatina*

Jocelyn M. Choo

Connection between Temperature,  
Larval Production, Virulence  
and Geographical Distribution of  
*Rhipidocotyle* Parasites Infecting the  
Duck Mussel, *Anodonta anatina*



UNIVERSITY OF JYVÄSKYLÄ

JYVÄSKYLÄ 2015

Editors

Timo Marjomäki

Department of Biological and Environmental Science, University of Jyväskylä

Pekka Olsbo, Ville Korhokangas

Publishing Unit, University Library of Jyväskylä

Jyväskylä Studies in Biological and Environmental Science

Editorial Board

Jari Haimi, Anssi Lensu, Timo Marjomäki, Varpu Marjomäki

Department of Biological and Environmental Science, University of Jyväskylä

Cover photos by Jocelyn M. Choo and Jouni Taskinen.

URN:ISBN:978-951-39-6422-1

ISBN 978-951-39-6422-1 (PDF)

ISBN 978-951-39-6421-4 (nid.)

ISSN 1456-9701

Copyright © 2015, by University of Jyväskylä

Jyväskylä University Printing House, Jyväskylä 2015

## ABSTRACT

Choo, Jocelyn Mah

Connection between temperature, larval production, virulence and geographical distribution of *Rhipidocotyle* parasites infecting the duck mussel, *Anodonta anatina*

Jyväskylä: University of Jyväskylä, 2015, 37 p.

(Jyväskylä Studies in Biological and Environmental Science

ISSN 1456-9701; 310)

ISBN 978-951-39-6421-4 (nid.)

ISBN 978-951-39-6422-1 (PDF)

Yhteenveto: Lämpötilan, toukkatuotannon, virulenssin ja maantieteellisen levinneisyyden väliset yhteydet pikkujärvisimpukan *Rhipidocotyle*-loisilla.

Diss.

In this thesis, two bucephalid trematode parasites *Rhipidocotyle campanula* and *R. fennica*, which use the same first (*Anodonta anatina*) and second intermediate (*Rutilus rutilus*) host were studied. The aim was to investigate the effect of temperature on one of the key processes in the transmission of these parasites: 1) the emergence of cercarial larvae from *A. anatina* over short (1 h) and 2) long (throughout the annual cercarial shedding period, from May to October) time periods as well, as on 3) mussel survival and 4) the seasonal timing of cercarial release. In addition, the aim was to study how the cercarial shedding traits are linked to the 5) geographical occurrence and abundance of the *Rhipidocotyle* species. In the experimental studies, the cercarial emergence by *R. fennica* increased significantly with increasing temperature over short and long time periods, while that by *R. campanula* was unaffected by temperature. *R. campanula* clearly started seasonal cercarial release earlier and at a lower temperature than *R. fennica*. Survival of mussels, especially cercariae-shedding mussels, was lower at higher temperature, and the shedding of *R. campanula* cercariae was associated with higher mussel mortality than the shedding of *R. fennica*. The average duration of the seasonal cercarial release period of both species was unaffected by temperature at the individual host level, but at the host population level the cercarial shedding period of *R. fennica* (but not of *R. campanula*) was longer at higher temperature. The field study showed that the occurrence, mean prevalence and abundance of *R. fennica* – in accordance with the experimentally observed association of cercarial release with high temperature – decreased from the south (61–64 °N) to the low north (65–66 °N), but this pattern was not detected in *R. campanula*.

Keywords: *Anodonta anatina*, cercarial production, latitudinal pattern, *Rhipidocotyle* parasites, *Rutilus, rutilus*, Unionidae, temperature, virulence.

Jocelyn M. Choo, University of Jyväskylä, Department of Biological and Environmental Science, P.O. Box 35, FI-40014 University of Jyväskylä, Finland

**Author's address** Jocelyn M. Choo  
Department of Biological and Environmental Science  
P.O. Box 35  
FI-40014 University of Jyväskylä  
Finland  
jomachoo@jyu.fi

**Supervisors** Professor Jouni Taskinen  
Department of Biological and Environmental Science  
P.O. Box 35  
FI-40014 University of Jyväskylä  
Finland

Docent Katja Pulkkinen  
Department of Biological and Environmental Science  
P.O. Box 35  
FI-40014 University of Jyväskylä  
Finland

**Reviewers** Associate Professor Andrew McElwain  
Department of Biological Sciences  
Shineman Center  
State University of New York at Oswego  
NY 13126  
USA

University Lecturer, Dr. Jukka Suhonen  
Section of Ecology  
Department of Biology  
University of Turku  
FI-20014 Turku  
Finland

**Opponent** Professor Dale Edwards  
Department of Biology  
University of Evansville  
Evansville, Indiana  
IN 47722  
USA

## CONTENTS

### ABSTRACT

### LIST OF ORIGINAL PUBLICATIONS

1	INTRODUCTION .....	7
1.1	Temperature and its impact on host-parasite systems .....	7
1.1.1	Cercarial emergence .....	8
1.1.2	Latitudinal species diversity and richness gradients .....	9
1.2	The importance of trematode parasites .....	11
1.3	Study species .....	12
1.4	Aims of the study .....	14
2	MATERIALS AND METHODS .....	16
2.1	Study system .....	16
2.2	Laboratory experiments (I, II, III) .....	16
2.2.1	Cercarial emergence - effects of temperature .....	16
2.2.2	Responses of <i>Rhipidocotyle fennica</i> to short-term temperature change (I) .....	16
2.2.3	Long-term effects of temperature on cercarial emergence and host survival (II), and the seasonal timing of cercarial shedding (III) .....	17
2.3	Field studies on latitudinal distribution of <i>Rhipidocotyle</i> parasites and their mussel host <i>A. anatina</i> (IV) .....	18
2.4	Statistical analyses .....	18
3	RESULTS AND DISCUSSION .....	19
3.1	Temperature-mediated cercarial emergence (I and II) .....	19
3.1.1	Virulence (II) .....	20
3.2	Seasonal cercarial emergence (III) .....	21
3.3	Latitudinal pattern .....	22
4	CONCLUSIONS .....	24
	<i>Acknowledgements</i> .....	26
	YHTEENVETO .....	27
	REFERENCES .....	30



## LIST OF ORIGINAL PUBLICATIONS

The thesis is based on the following original papers, which will be referred to in the text by their Roman numerals (I–IV).

Responsibilities of Jocelyn M. Choo in the articles of this thesis: In I, the experiment was planned together with JT. JMC carried out the experiment. Statistical analyses were performed by JT, and JMC wrote the article together with JT. In II and III, the planning of the experiments and collection of materials as well as statistical analyses were performed together with JT. JMC performed the experiments, and wrote the articles jointly with JT. In IV, the preliminary idea to carry out this study came from JT, who performed majority of the initial work. JMC contributed to material collection together with RK. HM organized and analysed the meteorological data. JMC contributed to the writing, and JT was mainly responsible for the statistical analyses and writing the article.

- I Choo J.M. & Taskinen J. 2015. Effect of short-term temperature change on cercarial release by *Rhipidocotyle fennica* (Trematoda, Bucephalidae) from the freshwater bivalve host, *Anodonta anatina*. *Ecological Parasitology and Immunology* 4: doi:10.4303/epi/235932.
- II Choo J.M. & Taskinen J. 2015. Temperature-dependent transmission and virulence of two *Rhipidocotyle* species parasitising a molluscan host. Submitted manuscript.
- III Choo J.M. & Taskinen J. 2015. Contrasting temperature responses in the seasonal timing of cercarial shedding by two *Rhipidocotyle* trematodes. Submitted manuscript.
- IV Taskinen J., Mäkelä H.M., Kortet R. & Choo J.M. 2015. Latitudinal distribution and abundance of the trematode parasites *Rhipidocotyle fennica* and *R. campanula*. Manuscript.

# 1 INTRODUCTION

## 1.1 Temperature and its impact on host-parasite systems

One of the most common interactions between species has been found to occur between parasites and their hosts (Bush *et al.* 2001). However, parasites, hosts and/or their interaction can be affected in different ways by different environmental factors including climate warming and the associated longer thermal growing season. Temperature is considered an especially influential factor, because it not only affects parasites directly during each of the different stages in their life cycle (Chubb 1979), but also indirectly via alterations in the distribution and abundance of their hosts (Marcogliese 2001). However, there is considerable interspecific variation in these responses. For the most part, the effect of increased temperature, as demonstrated regarding the infective larval stages (cercariae) of trematode parasites, includes rapid maturation, increased transmission and virulence (Mouritsen 2002, Thieltges and Rick 2006, Paull and Johnson 2011), at least up to an optimum temperature level (Studer *et al.* 2010), as well as decreased survival (McCarthy 1999). However, neutral or even negative temperature effects have also been reported (Koprivnikar and Poulin 2009). Host species are also subject to temperature-driven increase in susceptibility and reduced immune-competence (Seppälä and Jokela 2010), thereby leading to enhanced parasite-induced host mortality.

Range expansion or shifting patterns in the distribution of species towards higher latitudes, and changes in the timing of seasonal events (phenology) by parasites and hosts are among the important impacts of global climate warming (Lindgren and Gustafson 2001, Root *et al.* 2003, Kutz *et al.* 2005, Parmesan 2006). This is already evident in studies showing the northward movement of the parasite *Perkinsus marinus*, which causes disease in oysters, from its original southeast coastal range to the northeast coast in Sweden as a result of a warming trend in the north (Cook *et al.* 1998). In addition, the seasonal duration of larval release by parasites is expected to increase as a result of the longer thermal growing season (longer summer) (Marcogliese 2001) associated with

climate warming. Such lengthening in the seasonal cercarial transmission window will extend the risk of parasitism for target hosts.

Thus, changes in temperature and the associated thermal growing season are likely to affect host-parasite dynamics in different ways. Because parasites are influenced by different biotic and abiotic factors, as well as the abundance, distribution and condition of their hosts, for their basic life-history functions (e.g. transmission, reproduction and dispersal), predicting the implications of climate warming for parasite species and their hosts becomes very complex and context-dependent (Marcogliese 2001). Some parasite species will benefit from the warming through increased production and range extension, while others may experience range contractions or become locally extirpated.

In high latitude areas, temperature-mediated influence on host-parasite systems is particularly evident because parasite occurrence, reproduction and transmission show strong seasonality mediated by seasonal temperature fluctuations in the environment (Rantanen *et al.* 1998, Taskinen 1998a, Fingerut *et al.* 2003, Karvonen *et al.* 2004, 2010, Hakalahti *et al.* 2006). For instance, a greater part of each year is unsuitable for parasite growth, reproduction and transmission. Accordingly, the parasite life cycle is completed within narrow temporal limits, namely, warm summer months (e.g. Chubb 1979, Karvonen *et al.* 2004). High latitude parasites have evolved under seasonal temperature constraints. However, their high sensitivity to temperature (Poulin 2006) suggests that ongoing climate warming, which is projected to be stronger in high latitude areas (IPCC 2007), and the associated warmer summer and longer growing season (e.g. Ruosteenoja *et al.* 2011) are likely to alter the seasonal window for parasite growth by advancing its onset, delaying its cessation or lengthening the duration of the seasonal growing period for parasites. The importance of studying temperature-driven influence on host-parasite systems at high latitudes has been highlighted in previous studies (Morley and Lewis 2013, Studer and Poulin 2014), but experimental temperature manipulations have not been performed in relation to high latitude host-trematode associations at high latitudes ( $> 60^\circ$ ).

### 1.1.1 Cercarial emergence

The emergence of the infective larval stages (cercariae) from the molluscan host is an important feature in the trematode life cycle permitting transmission of infection from the first to the second intermediate or definitive host, thus contributing to the life-time reproductive success of the parasite. The emergence of cercariae is often initiated in response to different environmental factors, among which temperature is the most important factor (Poulin 2006). The cercarial production of trematodes in the molluscan host is receiving increased attention, because in addition to the link between cercarial production and temperature, it comes with a cost to the hosts as a result of the utilization of host tissues and energy reserves for larval production (Jokela *et al.* 1993). Moreover, cercariae are transmitted to different aquatic vertebrates and invertebrates, and the large numbers of cercariae that emerge into the aquatic

environment may play important secondary roles in the functioning of aquatic ecosystems in terms of biomass and energy flow (Thieltges *et al.* 2008, Morley 2012, Preston *et al.* 2013). Furthermore, a number of cercarial species transmitted to humans are of public health and medical importance (Lewis and Tucker 2014).

For *Rhipidocotyle* parasites, transmission from the first (*A. anatina*) to the second (*R. rutilus*) intermediate host takes place via free-swimming cercarial larvae. The cercarial release from the freshwater unionid mussel host (*A. anatina*) is strongly temperature-dependent, and it occurs in nature during the summer months (Taskinen *et al.* 1994, 1997, Taskinen 1998a). This is a common trend in temperate and cold climatic zones (Chubb 1979, Taskinen 1998a), suggesting that ambient temperature is one of the important determinants of cercarial production in trematodes. In addition, by increasing temperature, the release of *Rhipidocotyle* cercaria can be induced even during winter, outside of the natural shedding period (Taskinen *et al.* 1991). The water temperature and accumulated day-degrees required for the start of seasonal cercarial emergence by both *Rhipidocotyle* species are different, being much lower for *R. campanula* than for *R. fennica* (Taskinen *et al.* 1994, 1997). Whereas *R. campanula* starts cercarial release in early June, *R. fennica* does not start until 3–4 weeks later (in mid-July) (Taskinen *et al.* 1994, 1997, Taskinen 1998a). Consequently, the two parasites have different seasonal timing for cercarial emergence. In the laboratory, the cercarial shedding of *R. campanula* responds quickly to increased temperature, but the response of *R. fennica* is much slower (Taskinen *et al.* 1991).

However, the relationship between temperature and cercarial emission might not be straightforward, since neutral or even slightly negative temperature effects have also been reported for other trematode species (Poulin 2006). Results by Morley and Lewis (2013) and Studer and Poulin (2014) indicate that temperature effects on cercarial emergence are complex, depending on the host-parasite system, temperature range, acclimation, host size and latitude. Almost all of what is known about temperature-host-parasite interaction is derived from studies on snail hosts, with marine trematodes being the most studied (e.g. Fingerut *et al.* 2003, Thieltges and Rick 2006, Koprivnikar and Poulin 2009, Studer *et al.* 2010, Studer and Poulin 2014). The bivalvian mussel hosts remain poorly studied (Lyholt and Buchmann 1996, Morley *et al.* 2010). This is surprising because freshwater mussels are worldwide in distribution (e.g. Graf and Cummings 2006, Bogan 2008) and serve as intermediate hosts for many species of larval trematodes (e.g. Taskinen *et al.* 1991, Gibson *et al.* 1992, Grizzle and Brunner 2009). Understanding the response of different trematode-host associations to changing temperature will provide a more robust grasp of temperature influence on different host-parasite systems.

### 1.1.2 Latitudinal species diversity and richness gradients

Latitudinal gradients in species diversity and richness are one of the well-documented universal patterns in the distribution of organisms in nature (Rohde 1992, Rosenzweig 1995, Gaston and Blackburn 2000). Although there are

a few exceptions, decreases in diversity and richness in relation to increasing latitude have been demonstrated for many animals and parasites at the regional, continental and global levels (MacArthur 1972, Hawkins and Porter 2001, Rohde 2002, Guernier *et al.* 2004, Kuklinski *et al.* 2006, Hof *et al.* 2008, Griffiths *et al.* 2014). Among the exceptions are the marine trematodes of snail hosts in Europe, which show no latitudinal gradient in species richness (Thieltges *et al.* 2011), and endoparasites of the marine teleost fish across distinct geographical areas, from the Antarctic to the tropics, which also show no latitudinal gradient in relative species diversity and abundance (Rohde and Heap 1998).

A recent meta-analysis by Kamiya *et al.* (2014) indicates that the relationship between parasite species richness and latitude is weak, but mainly positive, with richness increasing with latitude. Thus, the latitudinal gradients in parasite diversity may differ from those of free-living taxa. More research, especially on the factors influencing the latitude dependence of parasite species occurrence is required (Kamiya *et al.* 2014).

Amongst many factors (e.g., dispersal ability and colonization probability), climatic factors, especially temperature, have been the most cited aspect influencing the observed latitudinal diversity pattern in both parasitic and free-living (host) organisms (Rohde 1992, Poulin and Rohde 1997, Rohde and Heap 1998, Guernier *et al.* 2004, Smith *et al.* 2010, Knouft and Page 2011, Griffiths *et al.* 2014). This is because temperature is one of the key determinants in the timing of seasonal events (e.g. growth and reproduction), development and transmission in a variety of parasitic and non-parasitic organisms (see Stenseth and Mysterud 2002, Ložys 2004, Ficke *et al.* 2007, Studer *et al.* 2010, Paull and Johnson 2011). Therefore the decrease in species richness and diversity towards high latitudes is not surprising. There is a decline in thermal growing season length, an increase in seasonal and interannual variability in temperature and greater strength of winter frost towards higher latitudes (e.g. Pau *et al.* 2011). Few species can physiologically tolerate these “harsh” conditions.

In addition to cooler temperature as a limiting factor in high latitude regions, parasites (and hosts) may not have had enough time to recolonize the high northern areas after the last glaciation. Furthermore, sporadic occurrence and declines in host richness and abundance towards higher latitude areas severely limits host availability and parasite transmission regardless of the suitability of ambient temperature. This is because of the strong positive correlation between parasite and host species richness and abundance (Watters 1992, Hechinger and Lafferty 2005, Krasnov *et al.* 2007). Hosts serve as habitat and dispersal agent for parasites. Therefore, for parasites with complex, multi-host life cycles such as *Rhipidocotyle* trematodes, one might expect the parasites to decrease in abundance with increasing latitude, and to show latitudinal pattern in occurrence and abundance that match those of their hosts.

The seasonal pattern and temperature sensitivity of many parasites suggest that ongoing global climate warming, which is projected to be greatest at higher latitudes (IPCC 2007), and the associated warmer summer and longer

growing season (Ruosteenoja *et al.* 2011) are likely to change the typical latitudinal pattern of parasites, causing range expansion or shift of some parasites towards higher latitudes. The relaxation of temperature constraints that affect some life-history traits (e.g. development, transmission) of parasites and hosts in northern ecosystems as a result of climate warming could facilitate the introduction and establishment of species previously unknown in the north.

## 1.2 The importance of trematode parasites

Trematodes are an important group of parasites, interacting within different trophic levels/members of a community during their complex life cycle, which involves different transmission processes between hosts. Many trematode species infect vertebrates and invertebrates. They are a ubiquitous part of freshwater and marine food webs, and they can play important roles in the functioning of aquatic ecosystems via food web and energy transfer (Kuris *et al.* 2008, Preston *et al.* 2013). Some trematodes can cause major veterinary or health problems (Morgan *et al.* 2001, Lewis and Tucker 2014). The influence of trematodes on host life-history traits, as well as behaviour and thermal preference, has been reported in many studies (e.g. Latham and Poulin 2002, Moore 2002, Żbikowska 2004).

Trematodes of the Bucephalidae family are known to parasitize a wide range of hosts, ranging from molluscs to fishes to birds (e.g. Taskinen *et al.* 1991, Gibson *et al.* 1992, Grizzle and Brunner 2009). In the mussel first intermediate host, the gonad is the primary target of infection and sporocyst proliferation. This infestation represents a serious risk for the host, as it leads to decreased growth, physiological condition and survival. Furthermore, it will disable mussel gametogenesis, leading to parasitic castration (Taskinen and Valtonen 1995, Jokela *et al.* 2005, Gangloff *et al.* 2008, Müller *et al.* 2015) and possible mussel death (da Silva *et al.* 2002). Valtonen *et al.* (1997) found the prevalence of infection by *R. fennica* and *R. campanula* to be very high in roach (*Rutilus rutilus*) from 4 lakes: 92–95 % and 53–70 %, respectively. Hoffmann *et al.* (1990) found that infection by bucephalid cercariae caused a mass mortality of their fish second (*R. rutilus*) hosts as the result of a sudden increase in water temperature from 12 to 20 °C. Parasite-induced pathology can be amplified at warmer temperatures (Paull and Johnson 2011), as a result of temperature-facilitated parasite production and virulence (Mouritsen and Jensen 1997, Kocan *et al.* 2009), or temperature-suppressed host immune responses (Seppälä and Jokela 2010). Bucephalid infection itself is a stressor. Thus, any additional temperature effect on the level of bucephalid parasitism is likely to have substantial consequences for host individuals.

### 1.3 Study species

*Rhipidocotyle campanula* and *R. fennica* (Trematoda: Bucephalidae, Digenea), need three host species to complete their life cycles, and they possess two aquatic free-swimming stages (Fig. 1). The adult worms are intestinal parasites mainly of the northern pike *Esox lucius* (*R. fennica*) and the European perch *Perca fluviatilis* (*R. campanula*) (Taskinen *et al.* 1991). Adult worms reproduce sexually, producing eggs that are released into the water. Eggs hatch free-swimming miracidia. Miracidium larvae of both species penetrate the first intermediate host, *A. anatina* where they develop into sporocysts. The sporocysts invade (mainly) the gonads of the mussel host (Taskinen *et al.* 1997), asexually producing large numbers of free-swimming cercarial larvae, which emerge primarily during the summer months to infect the common second intermediate hosts, the cyprinid fish *R. rutilus* (Taskinen *et al.* 1991, Gibson *et al.* 1992). Whereas the emerged cercariae of *R. fennica* attach and encyst as metacercariae mainly in the fins of *R. rutilus*, those of *R. campanula* encyst in the gills (Taskinen *et al.* 1991). The life cycle is completed when an infected second intermediate host is consumed by a definitive host where the metacercariae excyst and transform into adult worms.

In natural *A. anatina* populations, the prevalence of infection by *R. campanula* is usually not high (< 5%) and the parasite destroys on average 90 % of *A. anatina* gonad tissue, while infections by *R. fennica* are common (20–90%) and lead to an average of 30 % gonad destruction (Taskinen *et al.* 1991, 1994). Both parasites more often infect older and female mussels (Taskinen and Valtonen 1995, Müller *et al.* 2015). Pronounced seasonality in the developmental stages of cercariae and the number of sporocysts of the *Rhipidocotyle* species in *A. anatina*, and no clear seasonality in the prevalence of infection were observed by Taskinen *et al.* (1994). Both parasite species have been linked to decreased growth, longevity and reproduction of *A. anatina* as well as their ability to survive environmental stress (Taskinen and Valtonen 1995, Taskinen 1998b, Jokela *et al.* 2005, Müller *et al.* 2015).

The northernmost known locations of *R. fennica* and *R. campanula* are at 62 N° and 65 °N, respectively (Taskinen *et al.* 1994). Both parasites appear to be widespread in European freshwaters (for a review see Petkevičiūtė *et al.* 2014). However, their distributions have not been well-mapped. The only known first and second intermediate hosts for both parasite species in Finland are the unionid mussel *A. anatina* and the cyprinid fish *R. rutilus*, respectively. However, there are records in other European countries of other unionid species such as *Unio crassus* and *U. pictorum* (Baturó 1977, Ivantsiv and Chernogorenko 1984, Petkevičiūtė *et al.* 2014), and fish species (Baturó 1977, Ivantsiv and Chernogorenko 1984) harbouring *R. campanula* (= *illense*). Thus far, the only record of *R. fennica* occurrence in *R. rutilus* second intermediate host is in Finland (Taskinen *et al.* 1991, Gibson *et al.* 1992). In Finland, *A. anatina* and roach have been found up to 68 °N (Oulasvirta *et al.* 2008, Hayden *et al.* 2013),

and perch and pike occur throughout Finland up to 70 °N, although more sporadically and in low numbers at the highest latitudes (Hayden *et al.* 2013, 2014).

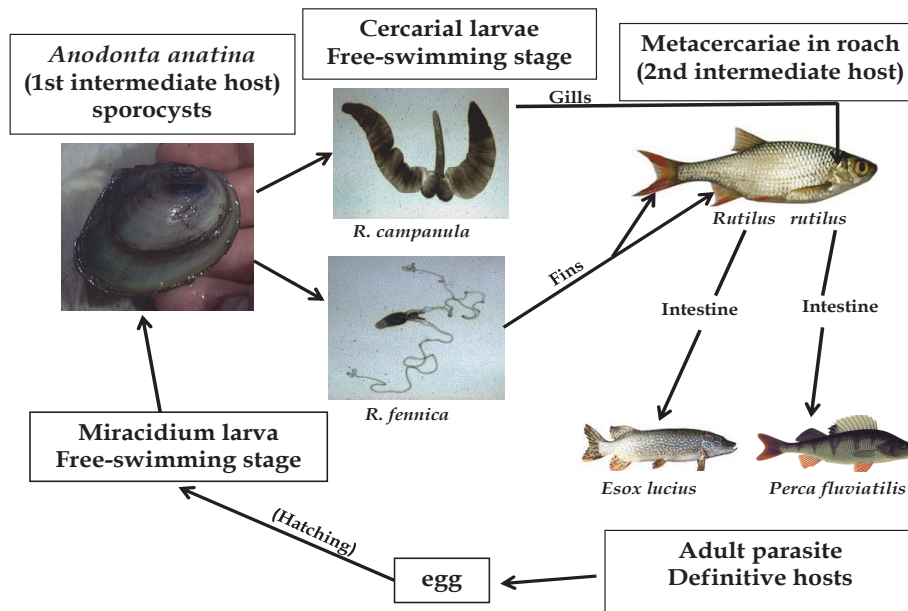


FIGURE 1 Life cycle of *Rhipidocotyle fennica* and *R. campanula*.

*Anodonta anatina* Nilss. (Mollusca Bivalvia, Unionidae) (= *A. piscinalis*) is a common and abundant dioecious freshwater bivalve mollusc inhabiting freshwaters in Europe. It is mature at 2–4 years of age, reaching a maximum life span of about 15–20 years and length of 12 cm (Økland 1963, Negus 1966). In Finland, the development of glochidia on the outer gill blades of female *A. anatina* takes place between July and August (Jokela *et al.* 1991). The glochidia are stored in the gills over the winter, and they are released the following spring (Negus 1966, Jokela *et al.* 1991, Pekkarinen 1993). After release, glochidia attach to a fish host (e.g. *R. rutilus* or *P. fluviatilis*) for about 4 weeks before benthic life begins (Jokela *et al.* 1991). Usually immature mussels (i.e.  $\leq 2$  years) are not infected, but after maturity the prevalence of infection in mussels increases with host age and size (Taskinen and Valtonen 1995, Taskinen *et al.* 1997). Concurrent infection (i.e. *R. campanula* and *R. fennica* occurrence in the same individual) is possible (Taskinen *et al.* 1991).

The cyprinid fish, roach *R. rutilus* is the second intermediate host for *R. fennica* and *R. campanula* (Taskinen *et al.* 1991). Roach has a ubiquitous distribution across western Eurasia and is found in different freshwater habitats (Kottelat and Freyhof 2007). They spawn during the spring in large groups, mainly in shallow waters. Individuals usually migrate to spawning sites (Mills 1991, Kestemont *et al.* 1999) such as littoral areas, bays, creeks and small ponds,



in which water warms early in the spring. Breeding sites can vary between populations and locations (Mills 1991). Spawning is observed mainly at temperatures above 12–16 °C (see Graham and Harrod 2009), indicating that the population recruitment of roach is strongly related to higher temperature. Roach have been found to harbour different protozoan and metazoan parasite species (Valtonen *et al.* 1997, Vainikka *et al.* 2009), but *R. fennica* and *R. campanula* are among the most common and abundant species (Valtonen *et al.* 1997, Vainikka *et al.* 2009). In Finnish waters, the transmission of *Rhipidocotyle* parasites to a roach is temporarily limited to occur between mid-June and September (Taskinen *et al.* 1994). Roach eurythermal characteristics allow them to survive a broad range of water temperatures (e.g. between 4 and > 30 °C) (Cocking 1959, Graham and Harrod 2009), but with a distinct preference for warmer temperatures. Roach growth mainly occurs above 12 °C (van Dijk *et al.* 2002) and juvenile growth is maximal between 20–27 °C (Hardewig and van Dijk 2003). Thus, roach are likely to profit from numerous aspects of the predicted climate change (Lehtonen 1996).

The European perch *P. fluviatilis* is the definitive host for *R. campanula* (Taskinen *et al.* 1991). It is a temperate mesotherm, cool-water, freshwater fish (Hokanson 1977), which is common in lakes, ponds and slow-flowing rivers across most of Europe and Asia. Perch spawn soon after the ice melts in April or May, mainly in littoral habitats. Perch co-occurs with roach and pike (*Esox lucius*). Perch are carnivorous and undergo dietary shifts that correspond with size. Wang and Eckmann (1994) have shown that the development and hatching success of perch eggs is most efficient at temperatures between 12 and 20 °C.

The Northern pike *E. lucius* is the definitive host for *R. fennica* (Taskinen *et al.* 1991). It is a large (< 130 cm) predatory freshwater fish (e.g. rivers, lakes and weakly saline waters), which is widely distributed around the northern hemisphere (e.g. Raat 1988, Crossman 1996). In northern areas, pike spawn in shallow water over vegetation immediately after the ice breaks in the spring, when water temperatures are between 8 and 12 °C (Casselman and Lewis 1996). After hatching, the larvae remain in vegetation for a few days (4–6 d) up to a month (Franklin and Smith 1963, Kennedy 1969). The pike migrates up tributaries and mainly reproduces in calm, sheltered and shallow waters with macrophyte vegetation (Craig 1996, Lappalainen *et al.* 2008).

## 1.4 Aims of the study

The aim of this thesis was to investigate the effect of temperature on one of the key process in the transmission of the trematodes *Rhipidocotyle campanula* and *R. fennica* from the first (*Anodonta anatina*) to the second (*Rutilus rutilus*) intermediate hosts, the emergence of cercarial larvae, over short (1 h) and long (20 weeks) time periods, *A. anatina* survival, and the seasonal timing of cercarial release. The aim was also to study how the cercarial shedding traits and mussel

host availability are linked to the latitudinal occurrence, prevalence and abundance of the *Rhipidocotyle* parasites at the northern boundary of their range. To document these, both field studies and laboratory experiments were performed. The response of *Rhipidocotyle* species to temperature has not been studied experimentally. Such a study is thus timely and should be of particular relevance due to ongoing climate change, especially because climate models predict an increase in annual air temperature from 2 to 7 °C in Finland by the 2080s, compared to a 1961–1990 baseline period (Jylhä *et al.* 2004).

Specific aims of the study:

- 1) Aside from seasonal temperature fluctuations, short-term temperature changes can also influence cercarial emergence. The aim was to investigate the effect of short term (1 h) temperature change on cercarial emergence by *R. fennica* from the first intermediate bivalve host *Anodonta anatina* in the laboratory (I).
- 2) To test the hypothesis that warming is associated with increased transmission (measured as cercarial output) and increased virulence (parasite-induced host mortality) of parasites, *A. anatina* were exposed to low, intermediate and high temperature throughout the annual cercarial shedding period (May–October). The cercarial release from mussel host and host survival were studied over a period of 20 weeks (II).
- 3) By utilizing the data from (II), the influence of temperature on the seasonal timing of the cercarial release by *R. fennica* and *R. campanula* was investigated. The specific interest was to distinguish the seasonal duration of cercarial shedding at the individual host level and the host population level (III).
- 4) To study the occurrence, prevalence and abundance of *Rhipidocotyle* parasites along a latitudinal gradient in Finland, by examining the first (*A. anatina*) and second (*R. rutilus*) intermediate hosts. The latitudinal occurrence of *A. anatina* was also studied by examining the fish hosts, *Perca fluviatilis* and *R. rutilus* (IV).

## 2 MATERIALS AND METHODS

### 2.1 Study system

The study species were collected from different locations in Finland. *A. anatina* for laboratory experiments were collected from the following rivers: Haajaistenjoki (August 25, 2014; 63° 63 'N, 26° 99 'E) (I), Kuusaankoski (May 17, 2011; 62° 25 'N, 26° 00 'E) and Haajaistenjoki (May 22, 2011) (II and III). For field study, populations of *A. anatina*, *R. rutilus* and *P. fluviatilis* were collected from three geographic regions along a latitudinal gradient: south (61–64 °N), low north (65–66 °N) and high north (67–69 °N).

### 2.2 Laboratory experiments (I, II, III)

#### 2.2.1 Cercarial emergence - effects of temperature

To test the hypothesis that global warming and the associated longer thermal growing season will increase the transmission (measured as cercarial output) and virulence (parasite-induced host mortality) of parasites as well as the seasonal duration of larval release by parasites (Marcogliese 2001, Harvell *et al.* 2002), three laboratory experiments were performed at the University of Jyväskylä (I) and Konnevesi Research Station (II and III). *Rhipidocotyle* species-*A. anatina* system was used as a model.

#### 2.2.2 Responses of *Rhipidocotyle fennica* to short-term temperature change (I)

*A. anatina* mussels were collected from the River Haajaistenjoki during late August by snorkeling, a period when most cercariae are fully developed and ready to emerge (Taskinen *et al.* 1994). In the laboratory, mussels were individually monitored for cercarial emergence at 17 °C (acclimatization temperature), which was the same as the ambient temperature, for 1 h and then

after temperature change, when mussels were individually moved from 17 °C to one of three new temperatures (14, 17 and 20 °C) for another 1 h. Mussels were removed from the boxes and the shed cercariae were identified, following Taskinen *et al.* (1991). The number of cercariae shed by each cercariae-shedding mussel after 1 h at 17 °C and after 1 h at the new temperature was counted from a 50 ml sample of well-mixed cercarial suspension.

### 2.2.3 Long-term effects of temperature on cercarial emergence and host survival (II), and the seasonal timing of cercarial shedding (III)

*A. anatina* mussels from two populations were exposed to low, intermediate and high temperature throughout the annual cercarial shedding period of *Rhipidocotyle campanula* and *R. fennica*, during which time the cercarial release (transmission) and host survival (virulence) (II) were studied. Concomitantly, the seasonal timing of cercarial shedding by *Rhipidocotyle* parasites in relation to temperature (III) was also studied. The number of cercariae shed per cercariae-shedding mussel after 24 h was counted as well as mussel mortality at 14-d intervals over a period of 20 weeks, between May 31 and October 28. The temperature range in the three treatments paralleled the natural variation occurring within the distributional range of study organisms in Finland. From the date of collection until June 25, mussels were established in the laboratory in two 163 l tanks (48 x 60 x 70 cm) under flow-through conditions (i.e. allowing a continuous flow of new water, one population per tank). Each tank was filled with 5 cm of sand on the bottom and supplied with 10 l min<sup>-1</sup> of running water from the hypolimnetic zone (9 m depth) of Lake Konnevesi. Water temperatures in both tanks were the same throughout this period ranging from 10.5 °C on May 31 to 11.7 °C on June 25.

On June 25, the mussels were randomly assigned to one of the three temperature treatments (two replicates for each treatment), such that mussels from both populations and from all size groups were distributed evenly to each of the 6 tanks. The average water temperatures from June 25 to October 28 (when experiment was terminated) were 18 °C (range 7–24 °C), 15 °C (range 6.6–20 °C) and 13 °C (range 6–17 °C) in high, intermediate and low temperature treatments, respectively. The maximum daily water temperature was 24 °C on July 27 in high temperature and, 20 °C in intermediate and 17 °C in low temperature treatment on September 4. The experiments were terminated on October 28, 2011. At that point, cercariae shedding had ceased practically in all treatments. For *R. fennica* and *R. campanula*, the cercarial shedding season has been reported to occur between late May and early October (Taskinen *et al.* 1994, 1997, Taskinen 1998a).

### 2.3 Field studies on latitudinal distribution of *Rhipidocotyle* parasites and their mussel host *A. anatina* (IV)

Materials were collected from 37 southern, 13 low northern and 7 high northern water bodies between 1989 (Taskinen *et al.* 1991) and 2015. The main focus was on three regions along a latitudinal gradient; south (61–64 °N), low north (65–66 °N) and high north (67–69 °N). The aim was to map the latitudinal pattern in the occurrence, prevalence and abundance of *Rhipidocotyle* parasites by examining the first and second hosts in the laboratory for occurrence of parasites. The frequency of occurrence of *A. anatina* was used as a measure of host availability. Climatological data from the years 1961–2014 obtainable from the Finnish Meteorological Institute, was used to construct a map with the number of days when the daily mean air temperature was  $\geq 15$  °C in order to evaluate the length of the seasonal thermal growing season of the parasites. This was used as a measure of transmission potential. In addition, the latitudinal occurrence of *A. anatina* was also studied by examining roach and perch for parasitic glochidium larvae of *A. anatina*, which are suitable hosts for *A. anatina* glochidia (Jokela *et al.* 1991).

### 2.4 Statistical analyses

Differences in the cercarial output between temperature treatments were tested using one-way ANCOVA (I) and two-way ANOVA (II). To determine whether the mean cercarial output was different between mussel groups one-way ANOVA (I). To compare the proportions of mussels shedding cercariae at different temperatures  $\chi^2$ -tests were used (II). Differences in survival between mussels shedding and those that did not shed cercariae were determined using logistic regression (II). Differences between treatments with respect to seasonal cercarial shedding traits were analysed using two-way ANOVA, with each parasite being analysed separately with treatment and populations as fixed factors (III). Differences between species with regard to seasonal cercariae traits were analysed using one-way ANOVA and Kruskal-Wallis tests. Differences between the three regions with regard to the occurrence frequency of *R. fennica* or *R. campanula* were analysed using  $\chi^2$ -tests or Fisher's exact tests. The relationship between latitude and the mean prevalence or abundance of the *Rhipidocotyle* parasite was studied using Spearman rank correlation analysis. Statistical analyses were performed with IBM SPSS statistics version 22.0. (I) and PASW Statistics 18 (II, III and IV).

## 3 RESULTS AND DISCUSSION

### 3.1 Temperature-mediated cercarial emergence (I and II)

Owing to the temperature-dependence of many trematodes (Poulin 2006), any change in temperature is likely to affect cercarial emergence. The effect of temperature on cercarial emergence from the molluscan host varies among trematode species, both under field conditions and in the laboratory (Fingerut *et al.* 2003, Koprivnikar and Poulin 2009). In this study, differences in cercarial emergence between two closely related, sympatric *Rhipidocotyle* parasites in response to different temperatures, were observed, over short and long time periods (I, II and III). The cercarial release of *R. fennica* (but not of *R. campanula*) was sensitive to both short and long term changes in temperature (I and II). The proportion of mussels shedding *R. fennica* as well as cercarial output, was significantly higher at higher temperatures compared to low temperatures over short (I) and long time periods (II).

The cercarial release by *R. fennica* from mussels transferred from 17 °C to 20 °C increased significantly during the 1 h monitoring when compared to the preceding 1 h period, while that from mussels transferred to 17 °C (control) remained unchanged, and that from mussels transferred to 14 °C decreased (I). Results consistent with observations from the present study have also been found for other trematodes by Studer *et al.* (2010) and Paull *et al.* (2015). Higher temperature not only triggers the emergence of cercariae, it can also speed up cercariae production within the mollusc host. However, while the abrupt temperature increase in the short-term experiment probably triggered the release of already mature cercariae from the mussel host, leading to a burst of cercariae emergence, it did not accelerate cercarial maturation within the sporocysts. Cercariae of *R. campanula* did not emerge neither before nor after temperature change (I). This result was unexpected, because, the thermal requirements of *R. campanula* are less demanding than those of *R. fennica*, it can start seasonal cercarial release at a lower temperature than *R. fennica* (Taskinen *et al.* 1994, 1997). Furthermore, cercarial shedding of *R. campanula* responds

quickly to increased temperature, but that of *R. fennica* is much slower (Taskinen *et al.* 1991). This is because, fully mature cercariae of *R. campanula*, which are readily available to emerge when suitable temperature is attained are found in the sporocysts in high proportions throughout the year (Taskinen *et al.* 1994). In contrast, mature cercariae of *R. fennica* readily available to emerge are found only during the cercarial shedding period (July to September). The cercarial release by *Rhipidocotyle* parasites has a diurnal periodicity (Taskinen *et al.* 1991). Whereas the emergence of *R. fennica* cercariae is greatest between 8 and 10 a.m., that of *R. campanula* peaks between 4 p.m. and 4 a.m. Therefore, the present experiment (I) was performed at the time of highest daily cercarial shedding by *R. fennica*. These results highlight the importance of short-term temperature change on the cercarial shedding of trematodes, the need to carefully control temperature conditions when studying factors influencing the cercarial emergence of trematodes, and the importance of other cercarial emergence-controlling factors (e.g. time of day), regardless of ambient temperature suitability.

The proportion of mussels shedding cercariae and the total annual cercarial output per cercaria-shedding mussel increased significantly with temperature for *R. fennica*, resulting in 200–500 fold increase in annual cercarial output at high temperature compared with low temperature in the long-term experiment. These traits were unaffected by temperature for *R. campanula* (II), suggesting a fundamental interspecific difference in the temperature-cercarial emergence relationship between these two closely related sympatric parasites. Interspecific variations in cercariae release have been reported by Koprivnikar and Poulin (2009); the shedding of the *Maritrema novaezealandensis* trematode seems to decrease with increased temperature, while the shedding of *Acanthoparyphium sp.* increased with rising temperature. These contrasting results in cercarial shedding patterns emphasize the importance of context-dependency when predicting global warming-driven effects on the dynamics of host-parasite systems: some parasites are very sensitive to temperature, others are not, and the direction of the responses observed (increased or decreased output or no change) differs among species.

### 3.1.1 Virulence (II)

Many parasites display greater virulence (host-induced mortality) at higher temperature (e.g. Paull and Johnson 2011). Mussel mortality was greatest at higher temperature. However, the mortality of cercariae-shedding mussels was considerably greater at higher temperature (II), indicating that the virulence associated with cercarial emergence increases with temperature. Jokela *et al.* (1999) have demonstrated that the mortality of cercariae-shedding snails is higher than that of non-shedding snails under stress conditions. This is not surprising, because cercarial production in mollusc host is achieved at the expense of the host (e.g. Jokela *et al.* 1993), with excessive depletion of host energy reserves and excessive tissue damage during larval production. It has been predicted that with increasing temperature, the virulence of parasites (i.e.

parasite-induced host mortality) increases (Marcogliese 2001, 2008, Harvell *et al.* 2002). The shedding of *R. campanula* cercariae was associated with higher host mortality than the shedding of *R. fennica* (II). Jokela *et al.* (2005) also observed lower survival of *Rhipidocotyle*-infected mussels under stress; the virulence of *R. campanula* appears to be higher than that of *R. fennica*. During the cercarial shedding season, the host exploitation rate, measured as the proportion of host gonad tissue replaced by parasite sporocysts is considerably higher for *R. campanula* (~ 90 %) than for *R. fennica* (~ 30 %) (Taskinen *et al.* 1994). It is not possible to conclude that the difference between these two species is due solely to variation in host exploitation rate, but this is definitely an attractive hypothesis that needs to be investigated further.

### 3.2 Seasonal cercarial emergence (III)

The predicted changes in temperature and the associated longer thermal growing season are expected to affect the timing of parasite life-cycle stages. A common expectation is that the seasonal duration of larval release by parasites will increase in length as a consequence of a longer thermal growing season (longer summer) (Marcogliese 2001, Harvell *et al.* 2009). Lengthening of the seasonal cercarial shedding period in thermally altered sites but not in ambient sites has been documented in investigations of other trematode species (Aho *et al.* 1983, Camp *et al.* 1982). However, experimental long-term manipulations of temperature conditions over the seasonal cercarial shedding period are rare (but see Paull and Johnson 2014 for an exception).

At the individual host level, 3 seasonal cercarial shedding traits (i.e. start time, temperature and day-degrees at the start) changed significantly with temperature change for *R. fennica*, but not for *R. campanula*. *R. fennica* started cercarial release earlier in the season with a high temperature and high day-degrees in the high temperature treatment; these traits remained constant across treatments for *R. campanula*. Seasonal cercarial shedding ceased earlier at high temperature for both species, but temperature had no effect on the mean duration of the seasonal cercarial shedding period of either of the *Rhipidocotyle* species.

At the host population level, the total shedding period by *R. fennica* from the first to the last observation of emergence lasted for 10–16 weeks in high and intermediate temperature treatments, respectively, and for 4–6 weeks at low temperature. In contrast, that of *R. campanula* ranged from 14 to 18 weeks at low temperature, (which was remarkably longer than that for *R. fennica*), and it varied from 8 to 18 weeks at high and intermediate temperatures. Thus, the total shedding period at the host population level was longer in the high than in the low temperature treatment for *R. fennica*. Within the temporal and thermal range of the present experiment, only results for *R. fennica* at the host population level support the view that climate warming would increase the duration of larval shedding by parasites (Marcogliese 2001, Harvell *et al.* 2009).



The lengthening of the total period of cercarial shedding by *R. fennica* with temperature was due to seasonal variation in the cercarial release between host individuals resulting in a longer total shedding period among all mussels (III). Lengthening of the cercarial release period of other trematodes has been observed in water bodies receiving thermal effluents (Aho *et al.* 1982).

The seasonal cercarial release peaked concomitantly with the seasonal thermal maximum for *R. fennica*, but not for *R. campanula*, which confirms previous observations of *R. fennica* (Taskinen 1998a). Cercarial shedding by *R. fennica* increased substantially at temperatures above 15 °C but high numbers of *R. campanula* cercariae were released as soon as the temperature exceeded 10 °C. During the months of the highest temperatures (July, August and September), a positive relationship between mean cercarial release and ambient temperature at the time of monitoring was evident for *R. fennica* but not for *R. campanula*. These experimental results are in accordance with previous field observations by Taskinen *et al.* (1994). Together these observations indicate that *R. fennica* is thermophilic (I, II and III). The projected climate warming in high latitudes and the associated earlier and warmer spring and longer summer (Tietäväinen *et al.* 2010, Ruosteenoja *et al.* 2011), should have a greater impact on *R. fennica* than on *R. campanula* in the future (I, II and III), favouring *R. fennica* more than *R. campanula*.

### 3.3 Latitudinal pattern

The frequency of the occurrence of *R. fennica*, as well as the mean prevalence of infection in *A. anatina* and the average site-specific mean abundance of metacercariae in roach decreased significantly from the southern to the low northern region, but this pattern was not detected in *R. campanula*. Moreover, both *Rhipidocotyle* parasites and their first intermediated mussel host were completely absent in the high northern region.

These contrasting results suggest that transmission factors such as temperature comprise, the most important determinant of the northern range border for *R. fennica* but not for *R. campanula*. Cercarial release by *R. fennica*, but not by *R. campanula*, increased significantly with increasing temperature (I), and *R. campanula* starts seasonal cercarial emergence much earlier and at a lower temperature than *R. fennica* (Taskinen *et al.* 1994). In addition, seasonal cercarial shedding by *R. fennica* started 30 to 50 days after the rise of water temperature to 15 °C, while that by *R. campanula* started immediately (Taskinen *et al.* 1994). Therefore, a shorter summer, lower temperature and shorter thermal growing season in the low northern region will constrain cercarial shedding, and hence the transmission, of *R. fennica* in this region but not of *R. campanula*. However, the complete absence of both parasites in the high northern region suggest that factors other than temperature may be limiting the transmission of these parasites in this region, such as host availability (as also the first intermediate host, *A. anatina*, was not found in the high northern region). *A. anatina* is the

only known first intermediate host for both *Rhipidocotyle* species in Finnish waters (Taskinen *et al.* 1991).

## 4 CONCLUSIONS

Species-specific variation in the emergence of trematode cercariae from the mollusc host and seasonal timing of cercarial emergence at different temperatures was confirmed in this study, emphasizing the importance of context-dependency when predicting climate warming-mediated influence on host-parasite systems. Temperature strongly, but differently, affected cercarial shedding by *Rhipidocotyle* parasites (I, II and III). Even closely related sympatric parasite species that share the same transmission pathway can respond very differently to temperature change. These species-specific differences in temperature responses between two *Rhipidocotyle* species in their cercarial shedding traits, have likely contributed to the present geographical distribution of the parasites and will probably affect their future occurrence and abundance in the high latitude regions where climate warming is predicted to be greatest.

The good performance of *R. fennica* at higher temperature, given its observed need for higher temperature and longer warm period for the start of seasonal cercarial release (I, II and III), suggest that *R. fennica* is likely to profit from numerous aspects of the predicted climate change in Finland: increased temperature, warm summer and longer growing season especially in the north. For instance, the occurrence frequency and abundance *R. fennica* may increase in the low north region as a result of longer and warmer summers predicted for this region. However, this may also have important implications for roach and *A. anatina*, because bucephalid infections have been reported to cause mass mortality of roach and *Rhipidocotyle* parasites are well-known to decrease the growth, survival and reproduction of *A. anatina*, as well as the ability of *A. anatina* to survive environmental stress.

While these results indicate a clear increase in cercarial output and the seasonal duration of larval shedding by *R. fennica* at higher temperatures (I, II and III), further studies examining the survival and infectivity of these parasites in relation to temperature would provide a better understanding of the transmission of *Rhipidocotyle* species from the first to the second host. Cercarial emergence from the mussel host is an important feature in the transmission dynamics of infection in trematode life cycle, however, cercarial survival and

infectivity, both of which are temperature-dependent are also crucial to the transmission process of *Rhipidocotyle* parasites. Cercarial survival generally decreases with increasing temperature (McCarthy 1999, Mouritsen 2002), likely owing to a faster depletion of their energy reserves, and cercarial infectivity increases with temperature, at least up to an optimum temperature (McCarthy 1999, Studer *et al.* 2010). Therefore, increased cercarial emergence and lengthening of the seasonal duration of larval release with increasing temperature and the associated longer thermal growing season, will not necessarily translate into increased transmission success if the cercariae have lower survival and infectivity at high temperature. Further studies on the effects of mussel exposure to higher temperatures than those used here will be needed to better understand how *Rhipidocotyle* spp.-*A. anatina* system will respond to predicted temperature rise in Finland.

*Acknowledgements*

First, I would like to express my gratitude to my supervisor Professor Jouni Taskinen, for giving me the opportunity to work with him and for providing helpful research and academic advice. I am also extremely grateful for all of the time he spent with me in the field and in the laboratory, helping me to set up experiments and collect data. The knowledge and experience I have gained, as well as the encouragement and support he offered me over the years, are priceless. Many thanks also to my second supervisor, Docent Katja Pulkkinen for her continuous support, promptness, invaluable advice and always checking to know how the work was progressing.

My appreciation also extends to my thesis follow-up group members, Docent Timo Marjomäki and Docent Anssi Karvonen, for their time, helpful comments, suggestions and insightful questions.

Thanks to all the staff, senior scientists and fellow PhD students at the Aquatic Science Section for the support and motivation. In particular, I wish to thank Professor Roger Jones for giving valuable comments on the manuscripts and for kindly checking the English. Docent Anssi Karvonen provided valuable comments on the manuscripts. Special thanks to my closest peers, MSc. Hanna Ahonen and Dr. Heidi Kunttu, for emotional and academic support over the years. Thanks for all the good times and laughs.

For assistance in material collection and examination, I would like to thank Olli Nousiainen, Tellervo Valtonen, Karri Jutila, Hanna Suonia, Tanvir Ahmed, Motiur Chowdhury, Sari Aaltonen, Nebiyu Girgibo, Waidi Alabi and the WETA104/2014 course students, especially Riku Rinnevali.

For technical assistance, I would like to acknowledge the help of all the technical staff at the Konnevesi research station and at the University of Jyväskylä.

I gratefully acknowledge the funding sources that made my PhD work possible. This work was funded by the University of Jyväskylä (Rector's grant), the Emil Aaltonen Foundation and the Biological Interactions Graduate School (University of Jyväskylä).

I would like to acknowledge with gratitude the love and support of my family over the years: my parents, Isaiah and Grace; my step-mum, Eeva; my sister, Eunice; my brothers, Roland, Rockhill, Eric and Hosea; and my other relatives. To my lovely son, thanks for being such a good boy and always cheering me up. Heartfelt thanks to Vincent, my best friend, for the wall of love and support that braced me time and time again. I also express my gratitude to my non-academic friends who have enriched my life over the years: Walter, Prudencia, Oba, Moteke, Polain, Timo, Pauliina, Kristiina, Sarah, Anna-Miina, Maria, Josepha, Cimpaye and Ruth.

Above all, I thank God, my good Father for His unconditional love and support at all times. I have experienced Your guidance every day. I will keep trusting You.

## YHTEENVETO

### Lämpötilan, toukkatuotannon, virulenssin ja maantieteellisen levinneisyyden väliset yhteydet pikkujärvisimpukan *Rhipidocotyle*-loisilla

Loiset vaikuttavat isäntiinsä haitallisesti heikentämällä niiden kasvua, lisääntymistä ja säilyvyyttä. Tätä kautta loisilla voi olla tärkeä rooli sekä isäntiensä populaatiodynamiikkaan että evoluutioon vaikuttavana tekijänä. Monet loiset vaikuttavat ihmisiin joko käyttämällä meitä tai hyötyeläimiämme tai -kasvejamme isäntänään aiheuttaen terveydellisiä, taloudellisia ja sosiaalisia ongelmia.

Lämpötilalla voi olla tärkeä merkitys loisten menestymiselle ja lois-isäntäsuhteen luonteelle. Loiset voivat esimerkiksi tuottaa enemmän jälkeläisiä ja/tai olla haitallisempia korkeammassa lämpötilassa. Tästä syystä käynnissä oleva ilmaston lämpeneminen saattaa aiheuttaa muutoksia loisten runsaudessa, loisten maantieteellisessä levinneisyydessä ja loisten aiheuttamissa haitoissa. Näitä muutoksia ja niiden lajikohtaisia eroja on kuitenkin tutkittu vähän, etenkin korkeilla leveysasteilla, vaikka tutkimustulokset olisivat ensiarvoisen tärkeitä yrittäessä ennustaa ilmastonmuutoksen vaikutuksia niin itse loisten kuin loisten aiheuttamien haittojen esiintymiseen.

*Rhipidocotyle fennica* ja *R. campanula* ovat Bucephalidae-heimoon ja Trematoda-luokkaan kuuluvia loisia, joilla on epäsuora elämänkierto. Ensimmäisessä väli-isännässä, pikkujärvisimpukassa (*Anodonta anatina*), loisten sporokystivaiheet tuottavat suvuttomasti kerkaria-toukkia ja heikentävät simpukan kasvua sekä alentavat niiden lisääntymis- ja elinkykyä. Kerkaria-toukat tarttuvat toiseen väli-isäntään, särkeen (*Rutilus rutilus*), ja muuntuvat metakerkaria-toukiksi, jotka ovat kysteissä evillä (*R. fennica*) tai kiduksilla (*R. campanula*). Kun loisittu särki tulee pääisännän, hauen (*R. fennica*) tai ahvenen/kuhan (*R. campanula*), syömäksi, loiset aikuistuvat pääisäntänsä suolessa ja tuottavat suvullisesti munia, jotka päätyvät veteen ja kehittyvät mirakidium-toukiksi, jotka tarttuvat edelleen pikkujärvisimpukkaan.

Tässä työssä tutkittiin lämpötilan, toukkien tuotannon, virulenssin ja maantieteellisen levinneisyyden välisiä yhteyksiä *Rhipidocotyle*-loisilla. *Rhipidocotyle*-loisten oli aiemmin havaittu tuottavan kerkaria-toukkia lämpimimpään vuodenaikaan ja lisäävän simpukkaisännän kuolevuutta stressitilanteessa. Loisten kalaisäntien (särki, hauki/ahven) tiedettiin esiintyvän maantieteellisesti pohjoisinta Suomea myöten. *Rhipidocotyle*-pikkujärvisimpukka lajipari oli siten sopiva tutkimuskohde selvitettäessä seuraavia kysymyksiä: Kuinka lämpötila vaikuttaa loisten päivittäisen ja vuotuisen kerkaria-toukkien tuotannon määrään ja siihen, mihin aikaan vuodesta toukkia tuotetaan? Kuinka lämpötila vaikuttaa kerkaria-toukkia tuottavien ja ei-tuottavien simpukoiden säilyvyyteen ja loisten virulenssiin? Hypoteesina oli, että (i) loiset alkavat tuottaa toukkia aiemmin ja runsaammin lämpimämmässä ympäristössä ja että (ii) korkea lämpötila alentaa simpukoiden - erityisesti *Rhipidocotyle*-loisittujen simpukoiden -

säilyvyyttä. Lisäksi *Rhipidocotyle*-loisten on aikaisemmin havaittu eroavan kehitysnopeudessa siten, että *R. fennica* -loisen kerkaria-toukkien erittyminen simpukoista alkaa 30–45 vrk sen jälkeen, kun veden lämpötila on noussut alkukesällä 15 °C:een, kun taas *R. campanula* alkaa tuottaa toukkia lähes välittömästi lämpötilan noustua 15 °C:een. Tästä syystä tutkimushypoteesina oli myös, että (iii) *R. campanula* pystyy esiintymään pohjoisemmilla alueilla kuin *R. fennica*, koska pohjoisten alueiden lyhyt kesä rajoittaa *R. fennica* -loisen kerkaria-tuotantoa ja samalla loisen tarttumista simpukasta särkeen voimakkaammin kuin *R. campanula* -loisen tuotantoa.

Veden lämpötilan vaikutusta kerkaria-toukkatuotantoon tutkittiin lyhyessä ja pitkässä laboratorionkokeessa. Ennusteen mukaisesti lyhyessä laboratorionkokeessa *R. fennica* -loisen kerkaria-toukkien erittyminen kasvoi välittömästi, kun loisitut simpukat siirrettiin korkeampaan lämpötilaan (17 → 20 °C) ja väheni, kun simpukat siirrettiin alhaisempaan lämpötilaan (17 → 14 °C). Pitkässä laboratorionkokeessa loisitut simpukat altistettiin luontaisen kaltaiselle veden lämpötilavaihtelulle toukokuusta lokakuulle kolmessa eri ryhmässä, joissa veden maksimilämpötilat olivat 24 °C (korkea), 20 °C (keskimääräinen) ja 17 °C (alhainen). Myös pitkässä laboratorionkokeessa korkea lämpötila lisäsi *R. fennica* -loisen kerkariaeritystä. Kerkaria-toukkia tuottavien simpukoiden osuus ja simpukan keskimäärin vuodessa tuottama kerkaria-määrä kasvoivat voimakkaasti lämpötilan noustessa – korkeassa lämpötilassa loisittu simpukkapopulaatio tuotti vuodessa 200–500-kertaisesti kerkaria-toukkia alhaiseen lämpötilaan verrattuna. Sitä vastoin *R. campanula* -loisella ei havaittu mitään eroja lämpötilakäsittelyjen välillä toukkien erittymisessä. Alhaisessa ja keskimääräisessä lämpötilassa *R. fennica* ja *R. campanula* -loisten vuotuiset kerkaria-tuotannot eivät poikenneet toisistaan, mutta korkeassa lämpötilassa *R. fennica* muodosti huomattavasti enemmän toukkia kuin *R. campanula*. Erittyneiden toukkien määrällä mitattuna *R. fennica* siis hyötyi korkeasta lämpötilasta, mutta *R. campanula* ei.

Keskimääräisessä kerkaria-toukkien erittymisen kestossa ei havaittu eroja eri lämpötilakäsittelyjen välillä. Koko isäntäpopulaatiossa kerkaria-toukkien erittyminen kesti *R. fennica* -loisella kuitenkin alhaisessa lämpötilassa, simpukkapopulaatiosta riippuen, vain 4–6 viikkoa, mutta korkeassa lämpötilassa 10–16 viikkoa. Sen sijaan *R. campanula* -toukkia erittyi pisimpään (14–18 vko) alhaisessa lämpötilassa. Keskimäärin *R. campanula* -toukkien erittyminen alkoi käsittelystä ja simpukkapopulaatiosta riippuen 42–87 vrk aikaisemmin ja huomattavasti alhaisemmassa lämpötilassa kuin *R. fennica* -toukkien, ja sen kerkaria-toukkia erittyi keskimäärin pidempään kuin *R. fennica* -toukkia. Siis myös toukkien erittymisen ajallisella kestolla mitattuna *R. fennica* hyötyi korkeasta lämpötilasta, mutta *R. campanula* ei.

Lämpötilan nousu alensi simpukoiden säilyvyyttä pitkässä laboratorionkokeessa. Kerkaria-toukkia erittävien simpukoiden kuolevuus oli suurempi kuin toukkia erittämättömien, erityisesti korkeassa lämpötilassa. Lisäksi *R. campanula* -toukkien tuottamiseen liittyvä kuolevuus oli suurempaa kuin *R. fennica* -toukkien tuottamiseen liittyvä kuolevuus. Tulokset kertovat *R. campanula* -loisen korkeammasta virulenssista.

*Rhipidocotyle*-loisten sekä niiden simpukkaisännän maantieteellistä levinneisyyttä ja runsautta selvitettiin tutkimalla vuosina 1996–2014 pikkujärvisimpukoita sekä niiden loisimia särkiä ja ahvenia Suomessa kolmella vyöhykkeellä pohjois–eteläsuunnassa: 61–64 °N (Etelä-Suomi; 37 järveä/jokea), 65–66 °N (Pohjois-Suomi; 13 järveä/jokea) ja 67–69 °N (pohjoisin Suomi; 7 järveä/jokea). Pikkujärvisimpukoista ja särjistä tutkittiin *Rhipidocotyle*-loisten esiintyminen ja särjistä sekä ahvenista tutkittiin pikkujärvisimpukan glokidium-toukkien esiintyminen. Lämpötilaolosuhteiden selvittämiseksi laskettiin Suomen alueelle 10x10 km<sup>2</sup> hilaruudukossa (yhteensä 3829 ruutua) vuosien 1961–2014 keskiarvo niiden vuorokausien lukumäärälle, jolloin ilman keskilämpötila oli  $\geq 15$  °C.

Etelä-Suomessa  $\geq 15$  °C vuorokausia oli keskimäärin 41–60 kpl, Pohjois-Suomessa 21–40 kpl ja pohjoisimmassa Suomessa alle 20 kpl. *R. fennica* -loisen esiintyvyys ja keskimääräinen runsaus laskee Etelä-Suomesta Pohjois-Suomeen, mutta *R. campanula* -loisen esiintyvyys ja runsaus eivät eronneet Etelä- ja Pohjois-Suomen välillä. Kumpikaan *Rhipidocotyle*-lajeista ei esiintynyt pohjoisimmassa Suomessa. Jälkimmäinen tulos johtuu särki- ja ahventulosten perusteella ensimmäisen väli-isännän, pikkujärvisimpukan puuttumisesta pohjoisimmasta Suomesta. *R. fennica* -loisen huonompi menestyminen Pohjois-Suomessa *R. campanula* -loiseen verrattuna puolestaan voi johtua siitä, että alhainen lämpötila ja lyhyt kesä rajoittavat pohjoisessa *R. fennica* -loisen kerkaria-tuotantoa ja siten loisen tarttumista ensimmäisestä toiseen väli-isäntään).

*R. campanula* -loisella simpukassa elävän, kerkaria-toukkia tuottavan vaiheen, sporokystin, on aiemmassa tutkimuksessa todettu pysyvän aktiivisena ympäri vuoden. *R. fennica* -loisella sporokystit sen sijaan lakkaavat tuottamasta kerkaria-toukkia ja osittain hajoavat syksyllä ja alkavat jälleen kehittyä uudelleen keväällä lämpötilan noustessa. Tällöin kypsiä *R. fennica* -kerkaria-toukkia on sporokysteissa – toisin kuin *R. campanula* -loisella – vain toukkien parveilu-aikaan. Tämä voi olla osasyynä siihen, että *R. campanula* -loisen virulenssi on korkeampi kuin *R. fennica* -loisen, mutta toisaalta tämä saattaa myös mahdollistaa sen, että *R. campanula* -loisen kerkaria-tuotanto voi alkaa paljon aikaisemmin ja alhaisemmassa lämpötilassa kuin *R. fennica* -loisen tuotanto. Tämän seurauksena *R. campanula* voi todennäköisesti myös menestyä paremmin pohjoisilla, lyhyen kesän alueilla kuin *R. fennica*.

Tämän työn tulokset viittaavat kytkökseen lämpötilan, toukkatuotannon, virulenssin ja maantieteellisen levinneisyyden välillä näillä kahdella pikkujärvisimpukan *Rhipidocotyle*-loisella. Tulosten perusteella *R. fennica* hyötyy ilmaston lämpenemisestä selvästi enemmän kuin *R. campanula*. Ilmastomallien enustama 2–7 °C lämpötilan nousu vuosien 1961–1990 tasolta 2080-luvulle aiheuttanee erityisesti *R. fennica* -loisen runsastumista pohjoisessa Suomessa.



## REFERENCES

- Aho J.M., Camp J.W. & Esch G.W. 1982. Long-term studies on the population biology of *Diplostomulum scheuringi* in a thermally altered reservoir. *J. Parasitol.* 68: 695–708.
- Baturo B. 1977. *Bucephalus polymorphus* Baer, 1827 and *Rhipidocotyle illense* (Ziegler, 1883) (Trematoda, Bucephalidae): morphology and biology of developmental stages. *Acta Parasitol.* 24: 203–220.
- Bogan A.E. 2008. Global diversity of freshwater mussels (Mollusca, Bivalvia) in freshwater. *Hydrobiologia* 595: 139–147.
- Bush A.O., Fernandez J.C., Esch G.W. & Seed J.R. 2001. *Parasitism: The Diversity and Ecology of Animal Parasites*. Cambridge University Press, Cambridge, UK.
- Camp J.W., Aho J.M. & Esch G.W. 1982. A long-term study on various aspects of the population biology of *Ornithodiplostomum ptychocheilus* in a South Carolina cooling reservoir. *J. Parasitol.* 68: 709–718.
- Casselman J.M. & Lewis C.A. 1996. Habitat requirements of northern pike (*Esox lucius*). *Can. J. Fish. Aquat. Sci.* 53: 161–174.
- Chubb J.C. 1979. Seasonal occurrence of helminthes in freshwater fishes. Part II. Trematoda. *Adv. Parasitol.* 17: 141–313.
- Cocking A.W. 1959. The effects of high temperatures on roach (*Rutilus rutilus*): I. the effects of constant high temperatures. *J. Exp. Biol.* 36: 203–216.
- Cook T., Folli M., Klin J., Ford S. & Miller J. 1998. The relationship between increasing sea-surface temperature and the northward spread of *Perkinsus marinus* (Dermo) disease epizootics in Oysters. *Estuar. Coast Shelf S.* 46: 587–597.
- Craig J.F. 1996. *Pike biology and exploitation*. Chapman and Hall, London.
- Crossman E.J. 1996. Taxonomy and distribution. In: Craig J.F. (ed.), *Pike biology and exploitation*, Chapman and Hall, London, pp. 1–12.
- da Silva P.M., Magalhães A.R.M. & Barracco M.A. 2002. Effects of *Bucephalus* sp. (Trematoda: Bucephalidae) on *Perna perna* mussels from a culture station in Ratoles Grande Island, Brazil. *J. Invertebr. Pathol.* 79: 154–162.
- Ficke A.D., Myrick C.A. & Hansen L.J. 2007. Potential impacts of global climate change on freshwater fisheries. *Rev. Fish Biol. Fisher.* 17: 581–613.
- Fingerut J.T., Zimmer C.A. & Zimmer R.K. 2003. Patterns and processes of larval emergence in an estuarine parasite system. *Biol. Bull.* 205: 110–120.
- Fiogbe E.D. & Kestemont P. 2003. Optimum daily ration for Eurasian perch *Perca fluviatilis* L. reared at its optimum growing temperature. *Aquaculture* 216: 243–252.
- Franklin D.R. & Smith L.L. Jr. 1963. Early life history of the northern pike, *Esox lucius* L., with special reference to the factors influencing the numerical strength of year classes. *Trans. Am. Fish. Soc.* 92: 91–110.
- Gangloff M.M., Lenertz K.K. & Feminella J.W. 2008. Parasitic mite and trematodes abundance are associated with reduced reproductive output

- and physiological condition of freshwater mussels. *Hydrobiologia* 610: 25–31.
- Gaston K.J. & Blackburn, T. M. 2000. *Pattern and process in macroecology*. Blackwell Science, Oxford.
- Graham C.T. & Harrod C. 2009. Implications of climate change for the fishes of the British Isles. *J. Fish Biol.* 74: 1143–1205.
- Graf D.L. & Cummings K.S. 2006. Review of the systematics and global diversity of freshwater mussel species (Bivalvia: Unionoida). *J. Mollus. Stud.* 73: 291–314.
- Gibson D.I., Taskinen J. & Valtonen E.T. 1992. Studies on bucephalid digeneans parasitising molluscs and fishes in Finland. II. The description of *Rhipidocotyle fennica* n. sp. and its discrimination by principal components analysis. *Syst. Parasitol.* 23: 67–79.
- Griffiths D., McGonigle C. & Quinn R. 2014. Climate and species richness patterns of freshwater fish in North America and Europe. *J. Biogeogr.* 41: 452–463.
- Grizzle J.M. & Brunner C.J. 2009. Infectious Diseases of Freshwater Mussels and Other Freshwater Bivalve Mollusks. *Rev. Fish Sci.* 17: 425–467.
- Guernier V., Hochberg M.E. & Guégan J-F. 2004. Ecology Drives the Worldwide Distribution of Human Diseases. *PLoS Biol.* 2: 740–746.
- Hakalahti T., Karvonen A. & Valtonen E.T. 2006. Climate warming and disease risks in temperate regions – *Argulus coregoni* and *Diplostomum spathaceum* as case studies. *J. Helminthol.* 80: 93–98.
- Hardewig I. & van Dijk P.L.M. 2003. Is digestive capacity limiting growth at low temperatures in roach? *J. Fish Biol.* 62: 358–374.
- Harvell C.D., Altizer S., Cattadori I.M., Harrington L. & Weil E. 2009. Climate change and wildlife diseases: When does the host matter the most? *Ecology* 90: 912–920.
- Harvell C.D., Mitchell C.E., Ward J.R., Altizer S., Dobson A.P., Ostfeld R.S. & Samuel M.D. 2002. Climate warming and disease risks for terrestrial and marine biota. *Science* 296: 2158–2162.
- Hawkins B.A. & Porter E.R. 2001. Area and latitudinal diversity gradient for terrestrial birds. *Ecol. Lett.* 4: 595–601.
- Hayden B., Massa-Gallucci A., Harrod C., O’Grady M., Cafrey J. & Kelly-Quinn M. 2014. Trophic flexibility by roach *Rutilus rutilus* in novel habitats facilitates rapid growth and invasion success. *J. Fish Biol.* 84: 1099–1116.
- Hayden B., Holopainen T., Amundsen P-A., Eloranta A.P., Knudse R., Præbel K. & Kahilainen K.K. 2013. Interactions between invading benthivorous fish and native whitefish in subarctic lakes. *Freshwater Biol.* 58: 1234–1250.
- Hechinger R.F. & Lafferty K.D. 2005. Host diversity begets parasite diversity: bird final hosts and trematodes in snail intermediate hosts. *Proc. R. Soc. B.* 272: 1059–1066.
- Hof C., Brändle M. & Brandl R. 2008. Latitudinal variation of diversity in European freshwater animals is not concordant across habitat types. *Global Ecol. Biogeogr.* 17: 539–546.

- Hoffmann R.W., Körting W., Fischer-Scherl T. & Schäfer W. 1990. An outbreak of bucephalosis in fish of the Main river. *Angew. Parasitol.* 31: 95–99.
- Hokanson K.E.F. 1977. Temperature requirements of some percids and adaptations to the seasonal temperature cycle. *J. Fish. Res. Board Can.* 34: 1524–1550.
- IPCC 2007. *Climate change 2007: Synthesis Report. Fourth Assessment of the Intergovernmental Panel on Climate Change* IPCC, Geneva, Switzerland.
- Ivantsiv V.V. & Chernogorenko M.I. 1984. [The life-cycle of *Rhipidocotyle illense* (Trematoda, Bucephalidae)]. *Vestnik Zoologii* 2: 66–69. (In Russian, English translation obtained).
- Jokela J., Uotila L. & Taskinen J. 1993. Effect of castrating trematode parasite *Rhipidocotyle fennica* on energy allocation of freshwater clam *Anodonta piscinalis*. *Funct. Ecol.* 7: 332–338.
- Jokela J., Valtonen E.T. & Lappalainen M. 1991. Development of glochidia of *Anodonta piscinalis* and their infection of fish in a small lake in northern Finland. *Arch. Hydrobiol.* 120: 345–55.
- Jokela J., Lively C.M., Taskinen J. & Peters A.D. 1999. Effect of starvation on parasite-induced mortality in freshwater snail (*Potamopyrgus antipodarum*). *Oecologia* 119: 320–325.
- Jokela J., Taskinen J., Mutikainen P. & Kopp K. 2005. Virulence of parasites in hosts under environmental stress: experiments with anoxia and starvation. *OIKOS* 108: 156–164.
- Jylhä K., Tuomenvirta H. & Ruosteenoja K. 2004. Climate change projections for Finland during the 21st century. *Boreal Env. Res.* 9: 127–152.
- Karvonen A., Seppälä O. & Valtonen E.T. 2004. Parasite resistance and avoidance behaviour in preventing eye fluke infections in fish. *Parasitology* 129: 159–164.
- Karvonen A., Rintamäki P., Jokela J. & Valtonen E.T. 2010. Increasing water temperature and disease risks in aquatic systems: climate change increase the risk of some, but not all, diseases. *Int. J. Parasitol.* 40: 1483–1488.
- Kennedy M. 1969. Irish pike investigations. I. Spawning and early life history. *Ir. Fish. Invest. Ser. A* 5: 4–33.
- Kestemont P., Rinchar J., Feys V. & Fostier A. 1999. Spawning migrations, sexual maturity and sex steroid levels in female roach *Rutilus rutilus* from the River Meuse. *Aquat. Sci.* 61: 111–121.
- Kamiya T., O'Dwyer K., Nakagawa S. & Poulin R. 2014. What determines species richness of parasitic organisms? A meta-analysis across animal, plant and fungal hosts. *Biol. Rev.* 89: 123–134.
- Kocan R., Hershberger P., Sanders G. & Winton J. 2009. Effects of temperature on disease progression and swimming stamina in *Ichthyophonus*-infected rainbow trout, *Oncorhynchus mykiss* (Walbaum). *J. Fish Dis.* 32: 835–843.
- Kottelat M. & Freyhof J. 2007. *Handbook of European Freshwater Fishes*. Kottelat, Cornol and Freyhof, Berlin.
- Knouft J.H. & Page L.M. 2011. Assessment of the relationships of geographic variation in species richness to climate and landscape variables within and

- among lineages of North American freshwater fishes. *J. Biogeogr.* 38: 2259–2269.
- Koprivnikar J. & Poulin R. 2009. Interspecific and intraspecific variation in cercariae release. *J. Parasitol.* 95: 14–19.
- Krasnov B.R., Shenbrot G.I., Khokhlova I.S. & Poulin R. 2007. Geographical variation in the 'bottom-up' control of diversity: fleas and their small mammalian hosts. *Global Ecol. Biogeogr.* 16: 179–186.
- Kuklinski P., Barnes D.K.A. & Taylor P.D. 2006. Latitudinal patterns of diversity and abundance in North Atlantic intertidal boulder-fields. *Mar. Biol.* 149: 1577–1583.
- Kuris A.M., Hechinger R.F., Shaw J.C., Whitney K.L., Aguirre-Macedo L., Boch C.A., Dobson A.P., Dunham E.J., Fredensborg B.L., Huspeni T.C., Lorda J., Mababa L., Mancini F.T., Mora A.B., Pickering M., Talhouk N.L., Torchin M.E. & Lafferty K.D. 2008. Ecosystem energetic implications of parasite and free-living biomass in three estuaries. *Nature* 454: 515–518.
- Kutz S.J., Hoberg E.P., Polley L. & Jenkins E.J. 2005. Global warming is changing the dynamics of Arctic host-parasite systems. *Proc. R. Soc. Biol. Sci.* 272: 2571–2576.
- Lappalainen A., Härmä M., Kuningas S. & Urho L. 2008. Production of pike (*Esox lucius*) in reed belt shores of the SW coast of Finland, Baltic Sea: a new survey approach. *Boreal Env. Res.* 13: 370–380.
- Latham A.D.M. & Poulin R. 2002. Field evidence of parasite induced mortality in three species of New Zealand shore crabs (Brachyura). *Mar. Biol.* 141: 1131–1139.
- Lehtonen H. 1996. Potential effects of global warming on northern European freshwater fish and fisheries. *Fish. Manag. Ecol.* 3: 59–71.
- Lewis F.A. & Tucker M.S. 2014. Shistosomiasis. In: Toledo R. & Fried B. (eds.), *Digenetic Trematodes, Advances in Experimental Medicine and Biology*, Springer, New York, pp. 47–75.
- Lindgren E. & Gustafson R. 2001. Tick-borne encephalitis in Sweden and climate change. *Lancet* 358: 16–18.
- Lyholt H.C.K. & Buchmann K. 1996. *Diplostomum spathaceum*: effects of temperature and light on cercarial shedding and infection of rainbow trout. *Dis. Aquat. Organ.* 25: 169–173.
- Ložys L. 2004. The growth of pikeperch (*Sander lucioperca* (L)) and perch (*Perca fluviatilis* (L)) under different water temperature and salinity conditions in the Curonian Lagoon and Lithuanian coastal waters of the Baltic Sea. *Hydrobiologia* 514: 105–113.
- MacArthur R.H. 1972. *Geographical Ecology. Patterns in the distribution of species*. Harper and Row, New York, USA.
- Marcogliese D.J. 2001. Implications of climate change for parasitism of animals in the aquatic environment. *Can. J. Zool.* 79: 1331–1352.
- Marcogliese D.J. 2008. The impact of the climate change on the parasites and infectious diseases of aquatic animals. *Rev. Sci. Tech.* 27: 467–484.

- McCarthy A.M. 1999. The influence of temperature on the survival and infectivity of the cercariae of *Echinoparyphium recurvatum* (Digenea, Echinostomatidae). *Parasitology* 118: 383–388.
- Mills C.A. 1991. Reproduction and life history. In: Winfield I.J. & Nelson J.S. (eds.), *Cyprinid fishes, Systematics, Biology and Exploitation*, Chapman and Hall, London, pp. 446–481.
- Moore J. 2002. *Parasites and the behavior of animals*. Oxford University Press, Oxford.
- Morgan A.T., Dejong R.J., Snyder S.D., Mkoji G.M. & Loker E.S. 2001. *Schistosoma mansoni* and *Biomphalaria*: past history and future trends, *Parasitology* 123: S211–S228.
- Morley N.J. 2012. Cercariae (Platyhelminthes: Trematoda) as neglected components of zooplankton communities in freshwater habitats. *Hydrobiologia* 691: 7–19.
- Morley N.J. & Lewis J.W. 2013. Thermodynamics of cercarial development and emergence in trematodes. *Parasitology* 140: 1211–1224.
- Morley N.J., Adam M.E., & Lewis J.W. 2010. The effects of host size and temperature on the emergence of *Echinoparyphium recurvatum* cercariae from *Lymnaea peregra* under natural light conditions. *J. Helminthol.* 84: 317–326.
- Mouritsen K.N. 2002. The *Hydrobia ulvae*-*Maritrema subdolum* association: influence of temperature, salinity, light, water-pressure and secondary host exudates on cercarial emergence and longevity. *J. Helminthol.* 76: 341–347.
- Mouritsen K.N. & Jensen K.T. 1997. Parasite transmission between soft-bottom invertebrates: temperature mediated infection rates and mortality in *Corophium volutator*. *Mar. Ecol. Prog. Ser.* 151: 123–134.
- Müller T., Czarnoleski M., Labecka A.M., Cichy A., Zając K. & Dragosz-Kluska D. 2015. Factors affecting trematode infection rates in freshwater mussels. *Hydrobiologia* 742: 59–70.
- Negus C.L. 1966. A quantitative study of growth and production of unionid mussels in the river Thames at Reading. *J. Anim. Ecol.* 35: 523–532.
- Oulasvirta P., Mela M., Kangas T. & Lindberg T. 2008. *Freshwater pearl mussel in Tornionjoki river basin*. Interreg III. A project report. Finnish Natura Heritage Services Metsähallitus.
- Økland J. 1963. Notes on population density, age distribution, growth and habitat of *Anodonta piscinalis* Nills. (Moll., Lamellibr.) in a eutrophic Norwegian lake. *Nytt Mag. Zool.* 11: 19–43.
- Parmesan C. 2006. Ecological and evolutionary responses to recent climate change. *Annu. Rev. Ecol. Evol. S.* 37: 637–669.
- Pau S., Wolkovich E.M., Cook B.I., Davies T.J., Kraft N.J.B., Bolmgren K., Betancourt J.L. & Cleland E.E. 2011. Predicting phenology by integrating ecology, evolution and climate science. *Global Change Biol.* 17: 3633–3643.
- Paull S.H. & Johnson P.T. 2011. High temperature enhances host pathology in snail-trematode system: possible consequences of climate change for emergence of disease. *Freshwater Biol.* 56: 767–778.

- Paull S.H. & Johnson P.T. 2014. Experimental warming drives a seasonal shift in the timing of host–parasite dynamics with consequences for disease risk. *Ecol. Lett.* 17: 445–453.
- Paull S.H., Raffel T.R., LaFonte B.E. & Johnson P.T. 2015. How temperature shifts affect parasite production: testing the roles of thermal stress and acclimation. *Funct. Ecol.* 29: 941–950.
- Pekkarinen M. 1993. Reproduction and condition of unionid mussels in Vantaa River, South Finland. *Arch. Hydrobiol.* 17: 357–375.
- Petkevičiūtė R., Stunžėnas V. & Stanevičiūtė G. 2014. Differentiation of European freshwater bucephalids (Digenea: Bucephalidae) based on karyotypes and DNA sequences. *Syst. Parasitol.* 87: 199–212.
- Poulin R. 2006. Global warming and temperature mediated increases in cercaria emergence in trematodes. *Parasitology* 132: 143–151.
- Poulin R. & Rohde K. 1997. Comparing the richness of metazoan ectoparasite communities of marine fishes: controlling for host phylogeny. *Oecologia* 110: 278–283.
- Preston D.L., Orlofske S.A., Lambden J.P. & Johnson T.J. 2013. Biomass and productivity of trematode parasites in pond ecosystems. *J. Anim. Biol.* 82: 508–517.
- Raat A.J.P. 1988. Synopsis of biological data on the northern pike, *Esox lucius* Linnaeus, 1758. *FAO Fish Synopsis* 30: 1–178.
- Rantanen J.T., Tellervo E.T. & Holopainen I.J. 1998. Digenean parasites of the bivalve mollusc *Pisidium amnicum* in a small river in eastern Finland. *Dis. Aquat. Org.* 33: 201–208.
- Root T.L., Price J.T., Hall K.R., Schneider S.H., Rosenzweig C. & Pounds J.A. 2003. Fingerprints of global warming on wild animals and plants. *Nature* 421: 57–60.
- Rohde K. 1992. Latitudinal gradients in species diversity: the search for the primary cause. *Oikos* 65: 514–527.
- Rohde K. 2002. Ecology and biogeography of marine parasites. *Adv. Mar. Biol.* 43: 1–86.
- Rohde K. & Heap M. 1998. Latitudinal differences in species and community richness and in community structure of metazoan endo–and ectoparasites of marine teleost fish. *Int. J. Parasitol.* 28: 461–474.
- Rosenzweig M.C. 1995. *Species diversity in space and time*. Cambridge University Press, Cambridge.
- Ruosteenoja K., Räisänen J. & Pirinen P. 2011. Projected changes in thermal seasons and the growing season in Finland. *Int. J. Climatol.* 31: 1473–1487.
- Seppälä O. & Jokela J. 2010. Immune defense under extreme ambient temperature. *Biol. Letters* 7: 119–122.
- Smith G.R., Badgley C., Eiting T.P. & Larson P.S. 2010. Species diversity gradients in relation to geological history in North American freshwater fishes. *Evol. Ecol. Res.* 12: 693–726.
- Stenseth N.C. & Mysterud A. 2002. Climate, changing phenology, and other life history and traits: nonlinearity and match-mismatch to the environment. *Proc. Nat. Acad. Sci. USA.* 99: 13379–13381.

- Studer A. & Poulin R. 2014. Analysis of trait mean and variability versus temperature in trematode cercariae: is there scope for adaptation to global warming? *Int. J. Parasitol.* 44: 403–413.
- Studer A.D., Thieltges W. & Poulin R. 2010. Parasites and global warming: net effects of temperature on an intertidal host-parasite system. *Mar. Ecol. Prog. Ser.* 415: 11–22.
- Taskinen J. 1998a. Cercarial production of the trematodes *Rhipidocotyle fennica* kept in the field. *J. Parasitol.* 84: 345–349.
- Taskinen J. 1998b. Influence of trematode parasitism on the growth of a bivalve host in the field. *Int. J. Parasitol.* 28: 599–602.
- Taskinen J. & Valtonen E.T. 1995. Age-, size-, and sex-specific infection of *Anodonta piscinalis* (Bivalvia: Unionidae) with *Rhipidocotyle fennica* (Digenea: Bucephalidae) and its influence on host reproduction. *Can. J. Zool.* 73: 887–897.
- Taskinen J., Mäkelä T. & Valtonen E.T. 1997. Exploitation of *Anodonta piscinalis* (Bivalvia) by trematodes: parasite tactics and host longevity. *Ann. Zool. Fennici* 34: 37–46.
- Taskinen J., Valtonen E.T. & Gibson D.I. 1991. Studies on bucephalid digeneans parasitizing molluscs and fishes in Finland I. Ecological data and experimental studies. *Syst. Parasitol.* 19: 81–94.
- Taskinen J., Valtonen E.T. & Mäkelä T. 1994. Quantity of sporocysts and seasonality of two *Rhipidocotyle* species (Digenea: Bucephalidae) in *Anodonta piscinalis* (Mollusca: Bivalvia). *Int. J. Parasitol.* 24: 877–886.
- Thieltges D.W. & Rick J. 2006. Effects of temperature on emergence, survival and infectivity of cercariae of the marine trematode *Renicola roscovita* (Digenea: Rencilidae). *Dis. Aquat. Organ.* 73: 63–68.
- Thieltges D.W., de Montaudounin X., Fredensborg B., Jensen K.T., Koprivnikar J. & Poulin R. 2008. Production of marine trematode cercariae: a potentially overlooked path of energy flow in benthic systems. *Mar. Ecol. Prog. Ser.* 372: 147–155.
- Thieltges D.W., Hof C., Matthias D.D., Brändle M., Brandl R. & Poulin R. 2011. Host diversity and latitude drive trematode diversity patterns in the European freshwater fauna. *Global Ecol. Biogeogr.* 20: 675–682.
- Tietäväinen H., Tuomenvirta H. & Venäläinen A. 2010. Annual and seasonal mean temperatures in Finland during the last 160 years based on gridded temperature data. *Int. J. Climatol.* 30: 2247–2256.
- Valtonen E.T., Holmes J.C. & Koskivaara M. 1997. Eutrophication, pollution, and fragmentation: effects on parasite communities in roach (*Rutilus rutilus*) and perch (*Perca fluviatilis*) in four lakes in central Finland. *Can. J. Fish. Aquat. Sci.* 54: 572–585.
- Vainikka A., Taskinen J., Löytynoja K., Jokinen E.I. & Kortet R. 2009. Measured immunocompetence relates to the proportion of dead parasites in a wild roach population. *Funct. Ecol.* 23: 187–195.
- van Dijk P.A.H., Staaks G. & Hardewig I. 2002. The effect of fasting and refeeding on temperature preference, activity and growth of roach, *Rutilus rutilus*. *Oecologia* 130: 496–504.

- Wang N. & Eckmann R. 1994. Effects of temperature and food density on egg development, larval survival and growth of perch (*Perca fluviatilis* L.). *Aquaculture* 122: 323–333.
- Watters G.T. 1992. Unionids, fishes and the species-area curve. *J. Biogeogr.* 19: 481–490.
- Żbikowska E. 2004. Does behavioural fever occur in snails parasitised with trematode larvae? *J. Therm. Biol.* 29: 675–679.



**ORIGINAL PAPERS**

**I**

**EFFECT OF SHORT-TERM TEMPERATURE CHANGE ON  
CERCARIAL RELEASE BY *RHIPIDOCOTYLE FENNICA*  
(TREMATODA, BUCEPHALIDAE) FROM THE FRESHWATER  
BIVALVE HOST, *ANODONTA ANATINA***

by

Jocelyn M. Choo & Jouni Taskinen 2015

Ecological Parasitology and Immunology 4: doi:10.4303/epi/235932.

Reprinted with kind permission of The Ashdin Publishing

©

Research Article

## Effect of Short-Term Temperature Change on Cercarial Release by *Rhipidocotyle fennica* (Trematoda, Bucephalidae) from the Freshwater Bivalve Host, *Anodonta anatina*

Jocelyn M. Choo and Jouni Taskinen

Department of Biological and Environmental Science, University of Jyväskylä, P.O. Box 35, 40014 Jyväskylän yliopisto, Finland  
Address correspondence to Jocelyn M. Choo, [jocelyn.m.choo@jyu.fi](mailto:jocelyn.m.choo@jyu.fi)

Received 20 July 2015; Revised 20 August 2015; Accepted 24 August 2015

Copyright © 2015 Jocelyn M. Choo and Jouni Taskinen. This is an open access article distributed under the terms of the Creative Commons Attribution License, which permits unrestricted use, distribution, and reproduction in any medium, provided the original work is properly cited.

**Abstract** Cercarial release from the first intermediate host is an important stage in the transmission of trematode parasites. Besides long-term (seasonal) temperature fluctuations, short-term temperature changes can also influence cercarial emergence. We tested the response of the bucephalid trematode, *Rhipidocotyle fennica* (*R. fennica*), acclimatized to 17 °C, to an abrupt temperature change. As the natural cercarial shedding by this parasite takes place annually during the warmest season, we expected a positive effect of temperature increase. Monitoring during one hour after the transfer from 17 °C to 20 °C revealed a significant increase in *R. fennica* cercarial release compared to the preceding one hour period. In contrast, cercarial release decreased in clams transferred to 14 °C, while no change was observed in control clams transferred from 17 °C to 17 °C. This shows that the cercarial release by *R. fennica* is sensitive to short-term temperature change, and, as predicted, responds positively to warming and negatively to cooling. The result emphasizes the importance of (i) temperature on the cercarial production of trematodes, and (ii) the need to carefully control temperature conditions when studying factors influencing the cercarial production of trematodes.

**Keywords** Cercaria; host-parasite relationship; mussel; parasite; temperature; transmission; trematodes; Unionidae

### 1. Introduction

Transmission of trematode parasites from the first intermediate (mollusk) host to the second intermediate host is achieved by cercarial larvae. Thus, production of cercariae is an important stage in the trematode life cycle and contributes to the life-time reproductive success of the parasite. Within mollusk hosts, trematodes multiply asexually and produce large numbers of cercariae, which usually emerge to find the next hosts [1]. For example, peak cercarial production rate of the bucephalid trematode *Rhipidocotyle fennica* (*R. fennica*) can reach over 20,000 larvae  $d^{-1}$  [2] and that of the diplostomatid species *Diplostomum (pseudo) spathaceum* almost 40,000 larvae  $d^{-1}$  [3]. This comes with a cost to the host, since host tissues and energy reserves are utilized for parasite larval production [4]. In the case of *R. fennica*, the reproduction, growth, and survival of the mollusk host

*Anodonta anatina* (*A. anatina*) are greatly reduced by infection [5,6,7]. In addition to the costs to host fitness, the large numbers of trematode cercariae that emerge into the aquatic environment may play important roles in the functioning of aquatic ecosystems in terms of biomass and energy flow [8,9,10]. Furthermore, because trematodes are harmful, and as there are many medically important trematodes that are transmitted to humans by cercariae, the study of cercarial release is also a subject of interest in applied science [11, 12].

Temperature conditions are well known to affect cercarial release by trematodes [13]. The emergence of cercariae from the mollusk hosts may be triggered by an increase or a decrease in temperature so that the effect of temperature is often species-specific [14]. Therefore, when studying the cercarial release by trematodes, an important methodological question is how short-term temperature change can influence the release of cercariae from the first intermediate host. In addition, if temperature change can affect trematode activity and cercarial production, it is possible that the mollusk hosts could actively change their microhabitat to regulate their ambient temperature, in order to counter the deleterious effects of trematode parasitism [15,16].

Thus far, regarding trematode response to short-term temperature change, Paull et al. [17] reported that trematode-infected snails transferred to a higher temperature (i.e., 3 °C > acclimation temperature) released more parasites 12 h after the temperature shift than before, while those moved to a lower temperature (3 °C < acclimation temperature) released fewer cercariae than before the shift. Studer et al. [18] also reported that infected snails exposed for one hour to a 4 °C–5 °C temperature boost showed significantly increased cercarial output at all temperature levels investigated. Taskinen et al. [19] and Taskinen [2] showed seasonal changes in emergence of *R.*

**Table 1:** Temperature treatment group specific total number ( $N_{\text{tot}}$ ), number infected ( $N_{\text{inf}}$ ), and number of cercariae-releasing clams ( $N$ ) during the experiment, and the mean ( $\pm$ SE) number of *R. fennica* cercariae released  $\text{h}^{-1}$  clam $^{-1}$  at 17 °C (before temperature change) and after the clams were transferred to one of the three temperature treatments (14 °C, 17 °C, and 20 °C).

$N_{\text{tot}}$	$N_{\text{inf}}$	$N$	Before temperature change			After temperature change		
			Temp.	$N$	<i>R. fennica</i>	Temp.	$N$	<i>R. fennica</i>
22	13 (59%)	11	17 °C	2	54.5 $\pm$ 39.0	14 °C	10	32.7 $\pm$ 73.2
20	14 (70%)	14	17 °C	6	58.6 $\pm$ 34.6	17 °C	13	201.4 $\pm$ 64.9
20	16 (80%)	12	17 °C	3	33.3 $\pm$ 37.3	20 °C	12	323.3 $\pm$ 70.0

*fennica* cercaria with peak emergence during the warmest summer. In addition, by increasing temperature, release of *R. fennica* cercaria could be induced even during winter, outside the natural shedding period [20]. However, the response of *R. fennica* cercarial production to temperature has not been studied experimentally. Therefore, we investigated the effect of short-term (one hour) temperature change on the cercarial release by *R. fennica* from the first intermediate host, the freshwater clam *A. anatina*, by transferring the clams from the acclimatization temperature of 17 °C to one of the following three temperatures: 20 °C, 17 °C or 14 °C. We predicted that temperature increase would promote cercarial emergence, while decrease of temperature would slow down cercarial release.

## 2. Materials and methods

### 2.1. Study species

The life cycle of *R. fennica* includes three host species. The parasite matures in the definitive host, the esocid fish *Esox lucius* [20,21], where the adult worms reproduce sexually, producing eggs that are released to the water. Miracidia larvae hatch from the eggs and penetrate the first intermediate host, *A. anatina*. Sporocysts of the parasite invade (mainly) the gonad of the host clam [22], producing cercarial larvae asexually. A specific diurnal pattern of cercarial release is exhibited by *R. fennica*, such that the main shedding period is during the day time, with the peak cercarial emergence occurring between 8 AM and 10 AM [20]. Emerged cercariae float in the water with the aid of their long furcae and attach to the fins of the second intermediate host, the cyprinid fish *Rutilus rutilus* [20].

The first intermediate host, *A. anatina*, is a common European freshwater bivalve clam with maximum life span > 10 y, age of maturation 2y–4y and maximum length of 100 mm–200 mm [5,23,24]. Female *A. anatina* develop glochidia larvae in July in their outer gill blades, where they are stored over winter to be released the following spring [22,25,26]. Glochidia are parasitic on freshwater fishes [25,27] before they detach and start their benthic life.

### 2.2. Clam collection and experimental design

A total of 62 *A. anatina* individuals were collected by snorkeling on 25th August 2014 from the River Haajaistenjoki in Finland (63°63' N, 26°99' E)—a small,

shallow river having a dense population of *A. anatina* with a high prevalence of *Rhipidocotyle* parasites. The clams were transported to Lake Jyväsjärvi (62°14' N, 25°47' E), by the city of Jyväskylä, where they were kept in a cage measuring 120 × 80 × 100 cm<sup>3</sup> for two days prior to the experiment. On 27th August, the clams were brought to the laboratory where three experimental clam groups were established; each group included randomly selected clams of all size groups ( $n = 20$  to 22 clams group<sup>-1</sup>; Table 1). Older clams (i.e.,  $\geq 3$  years of age) were used in the experiment as younger clams are normally not infected [5]. The water temperature of Lake Jyväsjärvi at the time of clam collection was 17 °C, which was the same as that in the River Haajaistenjoki.

The experiment was designed so that the number of cercariae released by each clam was first counted at the acclimatization temperature (17 °C) and again after a temperature change to one of the three new temperatures (14 °C, 17 °C, and 20 °C). Throughout the experiment, aerated, aged underground water (kept in the laboratory for 24h) was used. Each of the 62 clams was first placed individually in a 4L transparent plastic box filled with 2L of water at 17 °C from 8 AM to 9 AM on the 27th of August. After one hour at 17 °C, clams were transferred to one of the three new temperatures such that clams from each clam group were individually assigned to 14 °C (decreased), 17 °C (control) or 20 °C (increased temperature) for another one hour from 9 AM to 10 AM. The clams were then removed from the boxes and stored for dissection. Meanwhile, the number of cercariae shed by each clam after one hour at 17 °C and after one hour at the new temperature was counted from a 50 mL sample of well-mixed cercarial suspension. The 50 mL water sample was examined microscopically and the number of cercariae found was multiplied by 40 to obtain the total number of cercariae released into the 2L water volume in the experimental box.

Monitoring boxes for each temperature treatment were placed next to each other during the cercarial monitoring period in order to maintain specific water temperatures. The average (minimum-maximum) water temperature in the boxes measured at the end of each of the one hour cercarial monitoring periods was 17 °C (16.9 °C–17.0 °C) before temperature change, and after the temperature change

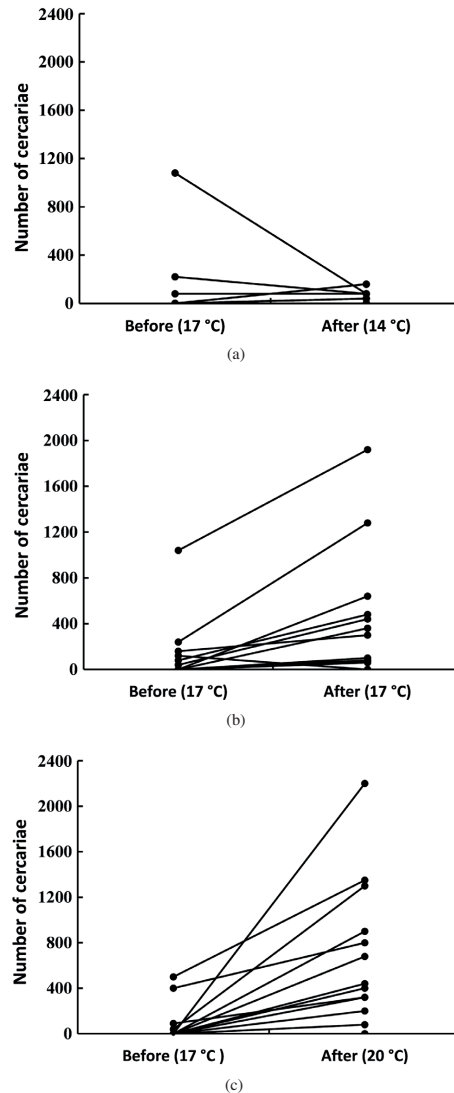
was 19.9 °C (19.8 °C–20.0 °C), 16.9 °C (16.8 °C–17.0 °C) and 14.2 °C (14.0 °C–14.5 °C) in increased, control, and decreased temperature treatments, respectively. Natural light conditions prevailed in the window-equipped laboratory and during each one hour cercarial monitoring period boxes were placed at the same distance from the window to ensure that the light conditions were equal for all boxes. After the experiment, all the clams were dissected and their gonads were examined for *Rhipidocotyle* parasites and their quantity [19]. Ages were determined for a subsample of clams from each clam group by counting the annual growth rings on the shell.

One-way ANOVA was used to determine whether the mean cercarial output was different between the three clam groups after one hour at 17 °C, prior to the transfer to the new temperatures. The number of cercariae released was used as the dependent variable and the clam group as a fixed factor. The effect of temperature treatment (increased, control or decreased) on the cercarial output was studied using one-way ANCOVA with the change in the cercarial production (i.e., the number of cercariae shed after temperature shift minus the number of cercariae shed before temperature shift) during the experiment as a response variable, treatment as a fixed factor, and the number of cercariae released before the temperature change as a covariate. Statistical analyses were performed using IBM SPSS statistics version 22.0. Means are given with  $\pm 1$  standard error (SE).

### 3. Results

The proportion of clams infected by *R. fennica* was 69%, with no significant difference between the three temperature treatment groups ( $\chi^2$ -test,  $df = 2$ ,  $\chi^2 = 2.161$ ,  $P = .339$ ; see Table 1). A high proportion of the infected clams (86%, 37 out of 43) released cercariae, with no significant differences between the temperature treatment groups ( $\chi^2$ -test,  $df = 2$ ,  $\chi^2 = 1.470$ ,  $P = .141$ ; see Table 1). Cercarial shedding was not related to the intensity of infection, as the proportion of *A. anatina* clams shedding cercariae did not differ whether infected with a low amount, moderate amount or a large amount of parasite sporocyst material in the host gonad, respectively ( $\chi^2$ -test,  $df = 2$ ,  $\chi^2 = 1.058$ ,  $P = .589$ ).

Prior to the transfer, the average cercarial output of *R. fennica* per clam over the one hour shedding period at 17 °C did not differ between the three clam groups (one-way ANOVA;  $F_{2,34} = 0.136$ ,  $P = .873$ ), being on average  $49 \pm 21$  cercariae  $h^{-1}$  clam $^{-1}$  (Figure 1). After the transfer, cercarial release was differentially affected by temperature treatment. There was a statistically significant difference in the change of cercarial production between the temperature treatments (one-way ANCOVA, "treatment":  $F_{2,33} = 5.515$ ,  $P = .009$ ). The change in cercarial release was the highest when the clams were transferred from 17 °C to 20 °C, with



**Figure 1:** Release of *R. fennica* cercariae from each cercariae-shedding clam at 17 °C during a one hour period before transfer to a new temperature, and during a one hour period after transfer to a new temperature ((a) decreased 14 °C; (b) control 17 °C; and (c) increased 20 °C). Ambient holding temperature of the host clams, *A. anatina*, was 17 °C.

an increase of  $290 \pm 63$  cercariae  $\text{h}^{-1}$  clam $^{-1}$ . The second highest change,  $143 \pm 59$  cercariae  $\text{h}^{-1}$  clam $^{-1}$ , occurred in clams transferred from 17 °C to 17 °C. In contrast to the transfer to a higher or equal temperature, a negative change ( $-22 \pm 66$  cercariae  $\text{h}^{-1}$  clam $^{-1}$ ) in cercarial release was observed in the clams transferred from 17 °C to 14 °C (Figure 1). Post hoc comparisons revealed that the transfer to 17 °C did not differ from the other temperature treatments, but the transfer to 20 °C differed significantly from the transfer to 14 °C. The effect of the covariate “cercarial release before temperature change” was not significant ( $F_{1,33} = 0.370$ ,  $P = .547$ ), indicating that the change in cercarial shedding accompanying transfer to the new temperature was not affected by the shedding rate before the temperature change. These results suggest that the exposure to a higher temperature and to a lower temperature increased and decreased, respectively, the immediate cercarial release of *R. fennica* from *A. anatina*.

Inspection of the experimental clams for *Rhipidocotyle* parasites revealed that 7 out of 62 *A. anatina* were infected by *R. campanula*. However, only *R. fennica* cercariae emerged from the clams during the experiment. The mean age of the clams did not differ between treatment groups 14 °C ( $5.6 \pm 0.6$  y,  $n_{\text{studied}} = 7$ ), 17 °C ( $5.8 \pm 0.7$  y,  $n_{\text{studied}} = 6$ ), and 20 °C ( $6.1 \pm 0.4$  y,  $n_{\text{studied}} = 8$ ) (one-way ANOVA,  $F_{2,18} = 0.276$ ,  $P = .762$ ).

#### 4. Discussion

Many trematodes are strongly influenced by temperature conditions [18,28,29,30]. Thus, any change in the direction or magnitude of temperature is very likely to affect cercarial production, an important feature for the transmission success and maintenance of viable trematode populations within ecosystems. The present study experimentally investigated the effects of temperature change on the cercarial emergence of the *R. fennica* trematode. The results revealed strong effects of short-term (one hour) temperature change on the release of *R. fennica* cercaria by the clam hosts. As predicted on the basis of previous findings that *R. fennica* cercarial shedding takes place seasonally during the warmest months [2,19,22], the response of cercarial release by *R. fennica* to rapid temperature increase was positive. In turn, the decrease of temperature led to a decrease of cercarial shedding. These results, together, suggest that cercarial release by *R. fennica* is thermophilic.

Results consistent with observations from the present study have also been found for other trematode species. Paull et al. [17] and Studer et al. [18] reported that the release of trematode cercariae increased temporarily in infected snails moved from lower to higher temperature, but decreased significantly in snails moved from higher to lower temperature. The boost in cercariae release from the clams moved to 20 °C in the present study could be explained as a

simple consequence of increased host metabolic activity at higher temperature resulting in the greater energy resources available to the parasites [13]. Usually, higher temperature not only accelerates cercariae production within the mollusk hosts but also triggers the emergence of cercariae from the mollusk hosts [28,29]. In the current study, all the clams were collected from the field in late August when most cercariae are fully developed and ready to emerge [19]. Therefore, in a short-term study like the present one, the abrupt temperature increase probably triggered the release of already developed cercariae from the clam hosts, leading to a burst of cercariae emergence, and did not accelerate cercarial maturation within sporocysts.

The cercarial release by *Rhipidocotyle* trematodes has a diurnal periodicity such that the emergence of *R. fennica* cercariae takes place in the day time, peaking between 8 AM and 10 AM [20]. Thus, the present experiment was performed at the time of highest daily productivity of *R. fennica*. This could explain the high proportion (37/43) of infected individuals releasing cercariae, and the relatively high cercarial production by *R. fennica* in the present study. The mean cercarial outputs of above 200–300  $\text{h}^{-1}$  clam $^{-1}$  at 17 °C and 20 °C are comparable to ca. 450–2,000 recorded at 22 °C [20]. This indicates that the experimental conditions for the clams and the parasite in the current study were not limiting the production of *R. fennica* cercaria. In contrast, the conditions for the cercarial release by *R. campanula* were presumably adequately met, leading to the total lack of shed cercariae for this species. The thermal requirements of *R. campanula* are not more demanding than those of *R. fennica*; it can start the cercarial release at a lower temperature than *R. fennica* [19]. However, *R. campanula* sheds cercariae mainly at night, with the period 8 AM–10 AM being the poorest [20]. Thus, we believe that the unsuitable time of the day mainly accounts for the non-emergence of *R. campanula* cercariae.

From the methodological point of view, the results highlight the critical role of temperature conditions when performing studies on cercarial release. The present observations on *R. fennica* show that abrupt changes in ambient temperature can substantially increase or decrease cercarial production. On the other hand, this can be utilized in studies where cercarial larvae of *R. fennica* are needed. The release of cercariae can be triggered by a slight increase in water temperature.

Besides methodology, the findings of the current study are also important when assessing the host-parasite relationship between the molluscan host and *R. fennica*. The production of cercariae by the parasite is achieved at the expense of the host. Thus, the present results indicate that the costs for the host clam (related to cercarial production and release) may be higher at higher temperature. The host clam, *A. anatina*, is capable of moving on the bottom

sediment. For example, a mean crawling track length of about 2 m was evident among *A. anatina* clams of Lake Saravesi, Finland [31]—a lake with 30% prevalence of *R. fennica* infection in *A. anatina* [5]. In theory, moving would enable infected *A. anatina* to influence its microhabitat by moving to deeper water to decrease environmental temperature. A thermal preference for colder microhabitat, a reverse fever, has been observed in trematode-infected snails, *Planorbis cornuus*, and explained as a defense response against the parasites [32]. Therefore, *A. anodonta* infected by *R. fennica* could also migrate to the deeper water to mitigate the adverse effects of the parasite. However, this hypothesis is not supported by the vertical distribution of clams infected by *R. fennica*. Prevalences of infection are found to be significantly lower in deeper water than in the littoral zone [5]. If infection by *R. fennica* has an impact on the vertical movements and thermal preference of *A. anatina*, could the parasite, *R. fennica*, manipulate the behavior of the host clam causing it to move to shallow, warm water, for the benefit of the parasite? These contrasting hypotheses remain to be studied in the future.

Climate warming has been recognized as one of the main factors affecting host-parasite relationships [13,33]. Therefore, in the future the response of *R. fennica* to long-term changes in temperature should also be studied. Climate models predict a 2 °C to 7 °C increase in annual temperature by the 2080s compared to the 1961–1990 baseline period, in Finland, the present study region [34]. If long lasting (weeks, months) increases in temperature increase cercarial production by *R. fennica* as occurred in the current short-term study, this should have a major impact on the total annual larval production of this parasite species.

**Acknowledgments** The authors would like to thank all the students of the WETA104/2014 course for assistance in the laboratory, especially Riku Rinnevali. They are also grateful to Katja Pulkkinen for invaluable comments on the manuscript, and to Roger Jones for checking the English of the manuscript. This study was supported by the University of Jyväskylä Rector's grants for doctoral studies (JMC), Emil Aaltonen Foundation (JMC), and the Academy of Finland (grant 260704, JT).

**Conflict of interest** The authors declare that there are no conflicts of interest.

## References

- [1] B. Fried and T. K. Graczyk, *Advances in Trematode Biology*, CRC Press, Boca Raton, FL, 1997.
- [2] J. Taskinen, *Cercarial production of the trematode Rhipidocotyle fennica in clams kept in the field*, *J Parasitol*, 84 (1998a), 345–349.
- [3] A. Karvonen, S. Kirsi, P. J. Hudson, and E. T. Valtonen, *Patterns of cercarial production from Diplostomum spathaceum: terminal investment or bet hedging?*, *Parasitology*, 129 (2004), 87–92.
- [4] J. Jokela, L. Uotila, and J. Taskinen, *Effect of the castrating trematode parasite Rhipidocotyle fennica on energy allocation of fresh-water clam Anodonta piscinalis*, *Funct Ecol*, 7 (1993), 332–338.
- [5] J. Taskinen and E. T. Valtonen, *Age-, size-, and sex-specific infection of Anodonta piscinalis (Bivalvia: Unionidae) with Rhipidocotyle fennica (Digenea: Bucephalidae) and its influence on host reproduction*, *Can J Zool*, 73 (1995), 887–897.
- [6] J. Taskinen, *Influence of trematode parasitism on the growth of a bivalve host in the field*, *Int J Parasitol*, 28 (1998), 599–602.
- [7] J. Jokela, J. Taskinen, P. Mutikainen, and K. Kopp, *Virulence of parasites in hosts under environmental stress: experiments with anoxia and starvation*, *Oikos*, 108 (2005), 156–164.
- [8] D. W. Thielges, X. de Montaudouin, B. Fredensborg, K. T. Jensen, J. Koprivnikar, and R. Poulin, *Production of marine trematode cercariae: a potentially overlooked path of energy flow in benthic systems*, *Mar Ecol Prog Ser*, 372 (2008), 147–155.
- [9] N. J. Morley, *Cercariae (Platyhelminthes: Trematoda) as neglected components of zooplankton communities in freshwater habitats*, *Hydrobiologia*, 691 (2012), 7–19.
- [10] D. L. Preston, S. A. Orlofske, J. P. Lambden, and P. T. J. Johnson, *Biomass and productivity of trematode parasites in pond ecosystems*, *J Anim Ecol*, 82 (2013), 509–517.
- [11] J. A. T. Morgan, R. J. Dejong, S. D. Snyder, G. M. Mkoji, and E. S. Loker, *Schistosoma mansoni and Biomphalaria: past history and future trends*, *Parasitology*, 123 (2001), S211–S228.
- [12] F. A. Lewis and M. S. Tucker, *Shistosomiasis*, in *Digenetic Trematodes*, R. Toledo and B. Fried, eds., vol. 766 of *Advances in Experimental Medicine and Biology*, Springer-Verlag, New York, 2014, 47–75.
- [13] R. Poulin, *Global warming and temperature-mediated increases in cercarial emergence in trematode parasites*, *Parasitology*, 132 (2006), 143–151.
- [14] J. Koprivnikar and R. Poulin, *Interspecific and intraspecific variation in cercariae release*, *J Parasitol*, 95 (2009), 14–19.
- [15] E. Žbikowska, *Does behavioural fever occur in snails parasitised with trematode larvae?*, *J Therm Biol*, 29 (2004), 675–679.
- [16] E. Žbikowska, *Do larvae of Trichobilharzia szidati and Echinostoma revolutum generate behavioral fever in Lymnaea stagnalis individuals?*, *Parasitol Res*, 97 (2005), 68–72.
- [17] S. H. Paull, T. R. Raffel, B. E. LaFonte, and P. T. J. Johnson, *How temperature shifts affect parasite production: testing the roles of thermal stress and acclimation*, *Funct Ecol*, 29 (2015), 941–950.
- [18] A. Studer, D. W. Thielges, and R. Poulin, *Parasites and global warming: net effects of temperature on an intertidal host-parasite system*, *Mar Ecol Prog Ser*, 415 (2010), 11–22.
- [19] J. Taskinen, E. T. Valtonen, and T. Mäkelä, *Quantity of sporocysts and seasonality of two Rhipidocotyle species (Digenea: Bucephalidae) in Anodonta piscinalis (Mollusca: Bivalvia)*, *Int J Parasitol*, 24 (1994), 877–886.
- [20] J. Taskinen, E. T. Valtonen, and D. I. Gibson, *Studies on bucephalid digeneans parasitising molluscs and fishes in Finland I. Ecological data and experimental studies*, *Syst Parasitol*, 19 (1991), 81–94.
- [21] D. I. Gibson, J. Taskinen, and E. T. Valtonen, *Studies on bucephalid digeneans parasitising molluscs and fishes in Finland. II. The description of Rhipidocotyle fennica n. sp. and its discrimination by principal components analysis*, *Syst Parasitol*, 23 (1992), 67–79.
- [22] J. Taskinen, T. Mäkelä, and E. T. Valtonen, *Exploitation of Anodonta piscinalis (Bivalvia) by trematodes: parasite tactics and host longevity*, *Ann Zool Fennici*, 34 (1997), 37–46.
- [23] C. L. Negus, *A quantitative study of growth and production of unionid mussels in the River Thames at Reading*, *J Anim Ecol*, 35 (1966), 513–532.
- [24] E. Haukioja and T. Hakala, *Life-history evolution in Anodonta piscinalis (Mollusca, Pelecypoda)*, *Oecologia*, 35 (1978), 253–266.
- [25] J. Jokela, E. T. Valtonen, and M. Lappalainen, *Development of glochidia of Anodonta piscinalis and their infection of fish in*

- a small lake in Northern Finland*, Arch Hydrobiol, 120 (1991), 345–355.
- [26] M. Pekkarinen, *Reproduction and condition of unionid mussels in the Vantaa River, South Finland*, Arch Hydrobiol, 17 (1993), 357–375.
- [27] K. Douda, M. Lopes-Lima, M. Hinzmann, J. Machado, S. Varandas, A. Teixeira, et al., *Biotic homogenization as a threat to native affiliate species: fish introductions dilute freshwater mussel's host resources*, Divers Distrib, 19 (2013), 933–942.
- [28] K. N. Mouritsen, *The Hydrobia ulvae-Maritrema Subdolum association: influence of temperature, salinity, light, water-pressure and secondary host exudates on cercarial emergence and longevity*, J Helminthol, 76 (2002), 341–347.
- [29] D. W. Thieltges and J. Rick, *Effects of temperature on emergence, survival and infectivity of cercariae of the marine trematode Rencicola roscovita (Digenea: Rencolidae)*, Dis Aquat Organ, 73 (2006), 63–68.
- [30] K. C. Shim, J. Koprivnikar, and M. R. Forbes, *Variable effects of increased temperature on a trematode parasite and its intertidal hosts*, J Exp Mar Bio Ecol, 439 (2013), 61–68.
- [31] M. Saarinen and J. Taskinen, *Burrowing and crawling behaviour of three species of unionidae in Finland*, J Molluscan Stud, 69 (2003), 81–86.
- [32] E. Zbikowska and A. Cichy, *Symptoms of behavioural anaptyrexia—Reverse fever as a defence response of snails to fluke invasion*, J Invertebr Pathol, 109 (2012), 269–273.
- [33] S. J. Kutz, E. P. Hoberg, L. Polley, and E. J. Jenkins, *Global warming is changing the dynamics of Arctic host-parasite systems*, Proc Biol Sci, 272 (2005), 2571–2576.
- [34] K. Jylhä, H. Tuomenvirta, and K. Ruosteenoja, *Climate change projections for Finland during the 21st century*, Boreal Env. Res, 9 (2004), 127–152.

## II

### TEMPERATURE-DEPENDENT TRANSMISSION AND VIRULENCE OF TWO *RHIPIDOCOTYLE* SPECIES PARASITISING A MOLLUSCAN HOST

by

Jocelyn M. Choo & Jouni Taskinen 2015

Submitted manuscript



### **III**

## **CONTRASTING TEMPERATURE RESPONSES IN THE SEASONAL TIMING OF CERCARIAL SHEDDING BY TWO *RHIPIDOCOTYLE* TREMATODES**

by

Jocelyn M. Choo & Jouni Taskinen 2015

Submitted manuscript

## IV

### LATITUDINAL DISTRIBUTION AND ABUNDANCE OF THE TREMATODE PARASITES *RHIPIDOCOTYLE FENNICA* AND *R.* *CAMPANULA*

by

Jouni Taskinen, Hanna M. Mäkelä, Raine Kortet & Jocelyn M. Choo 2015

Manuscript