
**This is an electronic reprint of the original article.
This reprint *may differ* from the original in pagination and typographic detail.**

Author(s): Abu-Jamous, Basel; Fa, Rui; Roberts, David J.; Nandi, Asoke

Title: Comprehensive analysis of forty yeast microarray datasets reveals a novel subset of genes (APha-RiB) consistently negatively associated with ribosome biogenesis

Year: 2014

Version:

Please cite the original version:

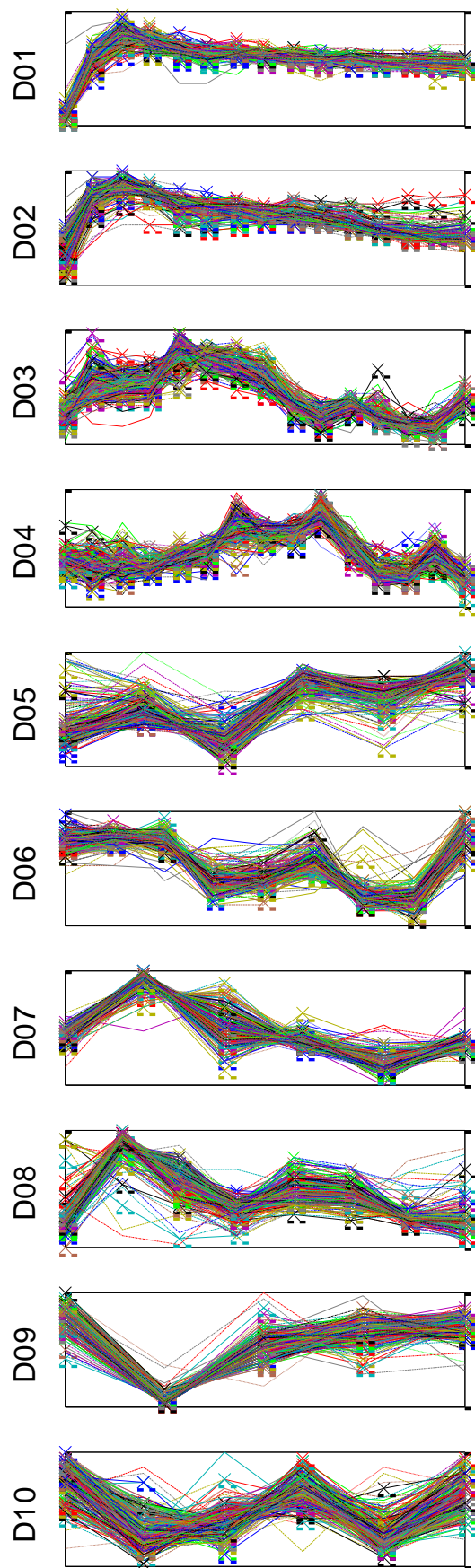
Abu-Jamous, B., Fa, R., Roberts, D. J., & Nandi, A. (2014). Comprehensive analysis of forty yeast microarray datasets reveals a novel subset of genes (APha-RiB) consistently negatively associated with ribosome biogenesis. BMC Bioinformatics, 15, Article 322. <https://doi.org/10.1186/1471-2105-15-322>

All material supplied via JYX is protected by copyright and other intellectual property rights, and duplication or sale of all or part of any of the repository collections is not permitted, except that material may be duplicated by you for your research use or educational purposes in electronic or print form. You must obtain permission for any other use. Electronic or print copies may not be offered, whether for sale or otherwise to anyone who is not an authorised user.

Supplementary Figure 1

This Supplementary Figure provides the profiles of the genes included in the clusters C1 and C2 at the tightness levels of DTB with $\delta = 0.3$ and 0.2 respectively. The profiles below are provided from all of the forty considered datasets.

C1 – 257 genes



C2 – 47 genes

