

This is a self-archived version of an original article. This version may differ from the original in pagination and typographic details.

Author(s): Hamilton, Kyra; van Dongen, Anne; Hagger, Martin S.

Title: An extended theory of planned behavior for parent-for-child health behaviors : A meta-analysis

Year: 2020

Version: Accepted version (Final draft)

Copyright: © 2020 American Psychological Association.

Rights: In Copyright

Rights url: <http://rightsstatements.org/page/InC/1.0/?language=en>

Please cite the original version:

Hamilton, K., van Dongen, A., & Hagger, M. S. (2020). An extended theory of planned behavior for parent-for-child health behaviors : A meta-analysis. *Health Psychology, 39*(10), 863-878.
<https://doi.org/10.1037/hea0000940>

An Extended Theory of Planned Behavior for Parent-for-Child Health Behaviors: A Meta-Analysis

Kyra Hamilton

Griffith University

Anne van Dongen

University of York

Martin S. Hagger

University of California, Merced and University of Jyväskylä

© 2020, American Psychological Association. This paper is not the copy of record and may not exactly replicate the final, authoritative version of the article. Please do not copy or cite without authors' permission. The final article will be available, upon publication, via its DOI: 10.1037/hea0000940

Full citation: Hamilton, K., van Dongen, A., & Hagger, M. S. (2019). An extended theory of planned behavior for parent-for-child health behaviors: A meta-analysis. *Health Psychology*.
<https://doi.org/10.1037/hea0000940>

Author Note

Kyra Hamilton, School of Applied Psychology, Menzies Health Institute Queensland, Griffith University, Brisbane, Queensland, Australia; Anne van Dongen, Department of Health Sciences, University of York, York, UK; Martin S. Hagger, Psychological Sciences, University of California, Merced, USA and Faculty of Sport and Health Sciences, University of Jyväskylä, Jyväskylä, Finland.

Martin Hagger's contribution was supported by a Finnish Distinguished Professor (FiDiPro) award from Business Finland (1801/31/2015).

We thank Federica Galli for her assistance with the study quality assessment and Daniel Brown for his assistance with the data extraction.

Correspondence concerning this article should be addressed to Dr. Kyra Hamilton, Health and Psychology Innovations (HaPI) Research Lab, School of Applied Psychology, Griffith University, 176 Messines Ridge Road, Mt Gravatt, QLD 4122. Email: kyra.hamilton@griffith.edu.au

Abstract

Objective: To conduct a meta-analysis of studies examining the determinants of behaviors performed by parents to promote the health of their child, termed parent-for-child health behaviors, based on an extended theory of planned behavior. Specifically, the study aimed to meta-analyze correlations among theory of planned behavior constructs, planning, and past behavior, and use them to test theory predictions and effects of salient moderators. **Methods:** A systematic search identified 46 studies that provided correlations between at least one theory construct and intention or behavior for parent-for-child behaviors. Theory predictions were tested using meta-analytic structural equation modeling. Studies were also coded for candidate moderators of model effects: child age, sample type, time lag between measures of theory constructs and parent-for-child health behavior, study quality, and behavior type, and estimated the proposed model at each level of the moderator. **Results:** Results supported theory predictions with attitudes, subjective norms, and perceived behavioral control predicting parent-for-child health behavior participation mediated by intention. Perceived behavioral control and planning also directly predicted behavior, and planning partially mediated effects of intention on behavior. Model effects held when controlling for past behavior, supporting the sufficiency of the theory in this behavioral domain. Few moderator effects were found on relations between theory constructs. **Conclusions:** Findings identified the social cognition determinants of parent-for-child health behaviors, and highlight the potential processes by which they relate to behavior. The current model signposts potentially modifiable targets for behavioral interventions aimed at fostering parental participation in behaviors that promote the health of their children.

Keywords: Child behavioral health; Parental influence; Social cognition theory; Action planning; Dual-phase models; Meta-analytic structural equation modeling

REGISTRATION: Prospero registry of systematic reviews identifier: CRD42016043081

An Extended Theory of Planned Behavior for Parent-for-Child Health Behaviors: A Meta-Analysis

Noncommunicable diseases such as cardiovascular disease, cancer, respiratory diseases, and diabetes are implicated in 71% of all deaths globally (GBD 2015 Collaborators, 2016; WHO, 2018). Modifiable behavioral risk factors such as physical inactivity and unhealthy diets are related to increased risk of non-communicable disease, whereas regular participation in health-promoting behaviors are associated with reduced chronic disease risk (Li et al., 2018). Based on this evidence, the World Health Organization (WHO) has proposed a global action plan aimed at reducing the burden of morbidity, mortality, and disability attributed to non-communicable disease (WHO, 2013). The plan highlights the importance of policies and initiatives that reduce exposure to common modifiable risk factors for chronic disease, while strengthening individuals' capacity to adopt healthy lifestyle behaviors. While the deleterious effects of non-communicable disease manifest in adulthood, childhood is a key period where exposure to risk factors begins and likely continues throughout life, underpinning the importance of adopting a life-course approach to health promotion (WHO, 2013).

It is well-documented that the development of efficacious health promotion programs necessitates identification of modifiable behavioral determinants to be targeted in behavior change interventions (Hagger, Cameron, Hamilton, Hankonen, & Lintunen, 2020; Johnson & Acabchuk, 2018; Rothman et al., 2015). Application of theories of social cognition has demonstrated utility in identifying these determinants. Prominent among these theories is the theory of planned behavior (Ajzen, 1991), a social cognition theory that has been applied extensively to predict multiple health behaviors. The theory identifies the belief-based constructs that are proposed to determine future behavioral engagement. Intention is a focal construct of the theory and represents the extent to which an individual is motivated to perform a given target behavior in future. Intention is posited as the most proximal predictor of behavior. Intention is a function of three belief-based constructs: attitudes (evaluation of the benefits and detriments of the behavior), subjective norms (beliefs that significant others support performing the behavior), and perceived behavioral control (perceived capacity to

carry out the behavior). In addition, to the extent that perceived behavioral control reflects actual control, it is also proposed to directly predict behavior. Inclusion of past behavior as an additional predictor of intention and behavior is also considered important in order to test the sufficiency of the theory (Ajzen, 1991).

Although the theory of planned behavior has shortcomings, particularly its focus on static prediction rather than dynamic change in behavior (Sniehotta, Pesseau, & Araújo-Soares, 2014), meta-analytic studies generally supported theory predictions, accounting for substantive variance in intention and behavior in multiple health contexts (e.g., McEachan, Conner, Taylor, & Lawton, 2011; Rich, Brandes, Mullan, & Hagger, 2015). However, the model has mainly been applied to the prediction of behaviors that promote individual health. Emerging research has demonstrated that the model may also be useful for understanding individuals' decisions for others' health, including parents'¹ behaviors to promote the health of their child or children, hereafter referred to as parent-for-child health behaviors (for a review see Hagger & Hamilton, 2019). Children, particularly very young children, tend to rely extensively, or exclusively, on parents performing behaviors that support their health (e.g., breastfeeding, applying sunscreen, cooking healthy meals). Parents also act as 'gatekeepers' of children's health behavior, by, for example, providing transport or resources (e.g., transporting children to the swimming pool, paying for dance lessons). Parents also influence children's motivation to participate in health behaviors through modeling. Previous research has demonstrated the effectiveness of the theory of planned behavior in identifying the determinants of parent-for-child health behaviors. For example, research applying the theory has shown parents' attitudes and perceptions of social pressure and control to be important predictors of their intentions toward, and participation in, parent-for-child health behaviors (Andrews, Silk, & Eneli, 2010; Hamilton, Kirkpatrick, Rebar, & Hagger, 2017; Hamilton, Spinks, White, Kavanagh, & Walsh, 2016).

¹In the context of the present study, we defined 'parent' as any full-time caregiver of a child including their biological parents as well as biological or non-biological caregivers.

Although the majority of research applying the theory of planned behavior has identified intentions to be a consistent determinant of parent-for-child behaviors, the relationship between intentions and behavior is far from perfect (Andrews et al., 2010; Hamilton, Kirkpatrick, Rebar, & Hagger, 2017; Hamilton, Spinks, et al., 2016). These findings are indicative of a substantive intention-behavior ‘gap’, similar to that identified in research applying the theory to health behavior more broadly (Orbell & Sheeran, 1998; Rhodes & de Bruijn, 2013). This shortfall in the predictive capacity of intentions likely reflects the influence of barriers, distractions, or competing demands that thwart intention enactment (Hamilton, Cleary, White, & Hawkes, 2016; Hamilton, Hatzis, Kavanagh, & White, 2015). Therefore, parents of young children need to be equipped with the means to manage these obstacles and follow-through on their intentions to perform parent-for-child health behaviors.

One self-regulatory strategy that may lead individuals to effectively enact on their intentions is planning. Dual phase models of behavior such as the health action process approach suggest that individuals who have formed intentions in an initial ‘volitional’ phase need to subsequently furnish their intentions with *action plans* in order to carry them out (Schwarzer, 2008; Schwarzer & Hamilton, 2020). Action plans involve identifying specific environmental contingencies that ‘cue-up’ the desired behavior and linking them to the behavior. Successful planners are proposed to be more effective in enacting their intentions, and it may be that individuals who are effective in carrying out their intentions are intuitively ‘good’ at planning. Consistent with this proposition, research adopting the health action process approach has indicated that action plans mediate effects of intentions on health behavior (Zhang, Zhang, Schwarzer, & Hagger, 2019). Similarly, research suggests that prompting individuals to form action plans leads to better behavioral enactment (Hagger, Luszczynska, et al., 2016). In the context of parent-for-child health behaviors, evidence is emerging that planning mediates the intention-behavior relationship (Hamilton, Cornish, Kirkpatrick, Kroon, & Schwarzer, 2018; Hamilton, Kothe, Mullan, & Spinks, 2017; Hamilton & Schwarzer, 2018), and suggests this is an important process by which parents enact these behaviors.

The Present Study

Given the importance of parental participation in health-promoting behaviors for their children to long-term child health (Hagger & Hamilton, 2019), identifying the key theory-based determinants of parent-for-child health behaviors may provide important evidence on which to base interventions to promote participation in these behaviors. The purpose of the present study was to synthesize research applying the theory of planned behavior to predict parents' participation in behaviors supporting the health of their child, and test theory-related predictions using meta-analytic structural equation modeling. The analysis will also test effects of planning on parents' participation in health-promoting behaviors for their children. Consistent with theory, it was expected that attitudes, subjective norms, and perceived behavioral control would predict parents' intention to perform parent-for-child health behaviors, intention and perceived behavioral control would predict behavior, and that intention would mediate effects of attitudes, subjective norms, and perceived behavioral control on behavior. Intention was also expected to predict planning directly consistent with theory, and for planning to predict behavior independent of the theory of planned behavior constructs. It was also expected that planning would mediate effects of intention on behavior, consistent with dual phase models. Finally, it was expected that all predictions would hold when controlling for past behavior.

Although the theory of planned behavior assumes that the determinants of behavior will be consistent across contexts, populations, and behaviors, theory and research suggests that the relative contribution of these constructs may vary according to specific contextual or sample-related factors. We therefore aimed to examine effects of salient moderators on relations among model constructs, particularly the intention-behavior relationship for parent-for-child health behaviors in the current study. Candidate moderators include demographic (age of child, sample type), methodological (time lag between measures of theory constructs and behavior, study quality), and conceptual (behavior type). Behavior type, in particular, is a key moderator. Current findings are expected to test whether the pattern of effects among theory constructs is consistent across types of parent-for-child behaviors,

or whether certain constructs are more effective in predicting particular behaviors (McEachan et al., 2011; Rich et al., 2015). For example, parents' intentions to perform certain parent-for-child behaviors may be more likely to be determined by subjective norms than others; parents may feel obliged to perform behaviors for their children like limiting screen time and cooking healthy meals due to perceived pressure from others such as the children's grandparents. Conversely, parents' intentions may be more likely to be related to their attitudes toward the valued outcomes that performing the behaviors will likely confer for their child such as protective behaviors like sun screen use or toothbrushing. In these cases, effects of subjective norms and attitudes on intentions and, therefore, the indirect effects of these constructs on behavior through intentions, are likely to be larger for physical activity and dietary behaviors, and health protective behaviors, respectively, compared to other behavior types. Identifying differences in the relative contribution of the constructs to intentions and behavior according to these moderator variables may have ramifications for the selection of variables to target in subsequent experimental or intervention research aimed at changing parent-for-child health intention and behavior (Sheeran et al., 2016).

Method

Search Strategy

The meta-analysis was pre-registered on the Prospero database of systematic reviews: http://www.crd.york.ac.uk/PROSPERO/display_record.php?ID=CRD42016043081. Five electronic databases (EMBASE, Medline, PsycINFO, Scopus, and Web of Science) were systematically searched to identify studies testing effects of constructs from the theory of planned behavior and related social cognition theories for behaviors performed by parents to promote the health of their child. Thus, included studies focused exclusively on parental reports of the behaviors they performed for their child (e.g., cooking, prompting, reminding, setting limits, applying sunscreen), and not on parental reports of their child's behaviors (e.g., eating, exercising, watching television, wearing seatbelt). Databases were searched from the earliest possible date through the end of April 2017.

Search terms were developed by the research team to maximize inclusiveness: “theory of planned behavio*” OR “theory of reasoned action” OR “reasoned action approach” OR “social cognitive theory” OR “social cognit* model” OR “social cogn*” OR “health belief model” OR “protection motivation theory” OR “health action process approach” OR “transtheoretical model” AND “guardian*” OR “parent*” OR “child*” OR “care giver” OR “caregiver” OR “care taker*”. Requests for unpublished data were sent by email to society listservs for unpublished research meeting inclusion criteria. A manual search of reference lists of published reviews of the theory of planned behavior was also used to locate additional studies, and a cross-referencing of the bibliographies of the articles obtained was conducted.

Characteristics of Included Studies

Studies were included if (a) participants were parents of children aged between 0 and 12 years (or a mean age of 12 years and younger); and (b) reported at least one effect size between a measure or manipulation of one construct from the theory of planned behavior, including measures of planning, and a measure of intention or behavior in the context of parent-for-child health behavior. Studies that measured or manipulated a theory construct, but did not include an intention or behavior measure were excluded. Articles identified in the initial search after removal of duplicates ($k = 4,545$) were subjected to a title and abstract screen for eligibility by two members of the research team. The resulting longlist of studies was then subjected to full-text review against inclusion criteria to produce a final set of included studies ($k = 49$). A PRISMA flow diagram (Moher, Liberati, Tetzlaff, Altman, & the PRISMA Group, 2009) of the study search, screening, and selection process is presented in Appendix A (supplemental materials). Studies using the same data set were consolidated (see Appendix B, supplemental materials). In addition, one study included multiple samples (de Vries, van Osch, Eijmael, Smerecnik, & Candel, 2012), so each sample was treated as a separate study in the analysis resulting in a final sample of 46 studies (see Appendix B, supplemental materials).

Classification of Constructs

Identified studies adopted a range of social cognition theories and models, such as the theories of reasoned action and planned behavior, social cognitive theory, the health belief model, and protection motivation theory. Given the considerable overlap in the definition and operationalization of the component constructs of these theories, as documented elsewhere (Conner, 2015; Fishbein et al., 2001; McMillan & Conner, 2007), measures of these constructs were consolidated into the attitudes, subjective norms, and perceived behavioral control constructs from the theory of planned behavior. For example, constructs representing behavioral beliefs and positive and negative evaluations of the behavior were classified as attitudes, constructs related to normative beliefs and social influence were classified as subjective norms, and beliefs in capacity and self-efficacy were classified as perceived behavioral control. In addition, planning was frequently measured as an additional construct in the current sample of studies on parent-for-child health behaviors, and is pertinent to the determination of these behaviors consistent with theories that adopt a dual phase approach to behavioral prediction (Heckhausen & Gollwitzer, 1987; Schwarzer, 2008). The most frequently used measures of planning were action planning and implementation intentions. Measures of parent-for-child behaviors were exclusively self-report via survey, interview, or verbal reports.

Effect Size Data Extraction

Relevant effect size data (effect size estimates and data relevant to estimating variability) representing relations among the consolidated set of constructs from the extended theory of planned behavior were extracted from included studies. The majority of studies were correlational in design with few intervention or correlational studies targeting change in theory constructs. The zero-order bivariate correlation coefficient was identified as the appropriate effect size metric for the analysis. None of the included studies adopting an experimental or intervention design tested effects of a manipulation targeting change in a single theory of planned behavior or planning construct on parent-for-child behavior. Instead, interventions adopted intervention strategies targeting change in constructs other than those included in the current model (e.g., message framing; Abhyankar,

O'Connor, & Lawton, 2008; Fahy & Desmond, 2010). Intervention effects did not, therefore, represent a valid manipulation of one of the model constructs and its effects on another model construct or behavior. As a consequence, data from the control group were used for studies adopting experimental or intervention designs. For studies including measures of behavior at multiple follow-up points, we used behavioral data taken at the time point most distal from baseline measures in our analysis to maximize numbers of studies with longer-range behavioral prediction. In addition to effect size data, sample characteristics (mean age and range of parents and children, gender distribution of parents and children), and operationalization of measures of intention and behavior were also extracted. These data were summarized in Appendix C (supplemental materials). Full characteristics of studies and data extracted are available in a spreadsheet available online: <https://osf.io/47efp/>.

Moderator coding

The following moderator variables were coded: child age, sample type, time lag between measures of social cognition constructs and the measure of parental health behavior, study quality, and behavior type (moderator coding is summarized in the study characteristics table in Appendix C). Studies were grouped into studies on younger children and infants under 6 years of age, and older children aged 6 years and older. With respect to the behavior type moderator, three types of parent-for-child health behaviors were the target behavior with sufficient frequency to conduct a moderator analysis ($k \geq 10$): physical activity, dietary behaviors, and protection or safety behaviors. Physical activity studies included parents' promoting or encouraging physical activity and exercise behaviors with their children. This category also included discouraging sedentary behaviors such as screen time. Dietary behaviors encompassed all nutrition-related behaviors, including promoting healthy eating such as consumption of fruits and vegetables, breastfeeding, and cooking breakfast, and discouraging unhealthy eating such as snacking and discretionary choices. Protection or safety behaviors included behaviors aimed to reduce health risks of the child such as vaccination, use of car seats, providing medication, sunscreen use, supervised tooth brushing, and injury prevention practices. The sign of the

extracted correlations between social cognition constructs and these behaviors was adjusted for consistency in aggregation. Studies were also coded according to sample type, with studies grouped according to whether the sample comprised solely of mothers and female caregivers, and samples comprising both male and female parents and caregivers. Time lag was defined as the time, in weeks, between measures of the social cognition constructs and follow-up measure of parents' behavior for their children. Studies with a time lag of six weeks or fewer were classified as 'proximal' and studies with a lag greater than six weeks were classified as 'distal'. This dichotomized variable was used in subsequent moderator analyses. Studies with no behavioral follow up were excluded from the time lag moderator analysis.

Study quality was assessed using a 20-item checklist developed for correlational research (Hagger, Koch, Chatzisarantis, & Orbell, 2017). Studies meeting stipulated quality standards on each item were assigned a score of 1 and those not meeting standards, or provided insufficient information for evaluation, were assigned a score of 0. Two raters with previous experience in assessing study quality analysis scored the studies. Inter-rater reliability was tested on a set of double-coded studies ($k = 10$) with good agreement (median agreement = 85%, range = 70% to 100%) and inter-rater reliability based on Gwet's (2008) AC1/AC2 coefficient (median AC1/AC2 coefficient = .779, range = .597 to 1.000, all p 's < .042). Studies attaining a quality score at or above a cutoff value of 65% (a score of 13 out of 20 on the checklist) were considered of 'high'/'acceptable' quality as recommended by the checklist authors, while studies attaining scores below 65% were considered of 'low'/'questionable' quality. The dichotomous study quality variable was used in the moderator analysis. For the sake of comparison we also coded alternative study quality moderator variables with more stringent cutoff criteria for 'acceptable' study quality checklist scores at or above 70% and 75%. The checklist criteria and item descriptions are presented in Appendix D (supplemental materials). Quality scores for each study and inter-rater reliability analyses are presented in a spreadsheet

available online: <https://osf.io/47efp/>. Study quality moderator coding is provided in Appendix C (supplemental material).

Data Dependency

Some studies provided multiple behavioral measures and, therefore, multiple effect sizes for behavior. However, inclusion of multiple effect sizes from the same study as separate effects in a meta-analysis violates the assumption of independence. As a consequence, we aggregated these effect sizes using the `Agg` function the `MAc` package (Del Re & Hoyt, 2018) in R, which uses Hunter and Schmidt's (2004) formula to deal with within-study dependency. The imputed correlation between the within-study effect sizes was set at $r = .50$ as recommended by Wampold et al. (1997). Details of aggregated studies and the behavioral dependent variables are provided in Table B (Appendix B, supplemental materials). Analysis scripts and output for the aggregation analysis are available online: <https://osf.io/47efp/>.

Data Analysis

Structural equation models. Relations among constructs in model tests were estimated using meta-analytic structural equation modeling using the `MASEM` package (Cheung & Hong, 2017) in R. Meta-analytic structural equation modeling is a two-stage approach to testing structural relations in a proposed model using correlations from a meta-analysis. In the first stage, correlation matrices among constructs of the proposed model from each included study are transformed to account for study-specific random effects, enabling them to be analyzed as covariance matrices in a structural equation model. Parameter estimates produced in the first stage represent the zero-order correlations among study constructs corrected for sampling error across studies with 95% confidence intervals. The analysis also provides homogeneity tests for each model parameter: Cochran's (1952) Q , the τ^2 statistic, and I^2 statistic and its 95% confidence interval. Statistically significant Q and τ^2 values with I^2 values exceeding 25% with wide confidence intervals are considered indicative of substantive

heterogeneity. Conventional fixed- and random-effects meta-analytic estimates and homogeneity statistics for each correlation were also computed using the *metafor* package in R for comparison.

In the second stage of the analysis, a model representing predicted relations among study constructs is fitted to the covariance matrix from the first stage. We estimated two structural equation models. A model representing the extended theory of planned behavior that included planning (Figure 1), and a model comprising only the theory of planned behavior constructs excluding planning (Figure 2). We estimated the model excluding planning because the studies that included a measure of planning numbered relatively few, so we were not able to estimate the full model in subsequent moderator analyses. In addition, we estimated separate models that included and excluded past behavior for both versions of the model to examine effects of past behavior on model relations, consistent with recommendations elsewhere (Hagger, Chan, Protogerou, & Chatzisarantis, 2016; Hagger, Polet, & Lintunen, 2018).

Model fit was evaluated using multiple goodness-of-fit indices: the comparative fit index (CFI), the Tucker-Lewis index (TLI), the standardized root mean square of the residuals, and the root mean error of approximation (RMSEA). A non-significant chi-square value, CFI and TLI values that approach or exceed .95, a SRMSR value of less than .08, and a RMSEA value of .05 or less indicate good fit of the model with the data (Hu & Bentler, 1999). Effects among model constructs were evaluated based on the likelihood-based confidence intervals about model parameter estimates. Differences in the effect sizes of the parameter estimates across the models including and excluding past behavior were tested using 95% confidence intervals of the difference in the parameter estimates across the models (Schenker & Gentleman, 2001). To the extent that the interval does not include zero, a statistically significant difference in the parameter estimates across models is confirmed. A formal test of difference is also provided using Welch's *t*-test. Both tests require the use of Wald confidence intervals based on symmetric standard errors.

Moderator analyses. Effects of candidate moderator variables on the proposed relations among constructs in the model were tested by estimating of the model separately in each moderator group. As before, multiple goodness-of-fit indices were adopted to evaluate the adequacy of the model in each moderator group. Differences in model parameter estimates across moderator groups were tested using Schenker and Gentleman's (2001) standard method and Welch's *t*-test.

Assessment of bias. The potential effect of selective reporting bias on relations among model constructs in the current sample of studies was evaluated using regression analyses based on 'funnel' plots of effect size on estimates of precision (Egger, Smith, Schneider, & Minder, 1997). Two methods are used: the precision effect test (PET) and the precision effect estimate with standard error (PEESE). PET and PEESE estimates for each effect size were computed, with accompanying *t*-tests for bias and significance tests of the corrected effect from zero, using the PETPEESE function (Carter, Schonbrodt, Gervais, & Hilgard, 2019) in R.²

Results

Zero-order correlations and bias estimates

Correlations. Zero-order averaged bias-corrected correlations (r^+) from the first stage of the MASEM analysis among constructs extracted from the included studies are presented in Table E1 for the theory of planned behavior including planning and Table E2 for the theory of planned behavior without planning (Appendix E, supplemental materials), with bias-corrected correlations from conventional random- and fixed-effects meta-analysis included for comparison (Table F1, Appendix F, supplemental materials). Correlations with 95% confidence intervals that did not include the value of zero were found among all constructs, with small-to-medium-sized effects. In particular, attitudes, subjective norms, perceived behavioral control, and planning were correlated with intention to participate in parent-for-child behaviors, and intention, perceived behavioral control, and planning were correlated with parent-for-child behavior, consistent with theory (Ajzen, 1991; Schwarzer,

²Raw data, analysis scripts, and output for all analyses are available online: <https://osf.io/47efp/>.

2008). Values for the I^2 statistic indicated moderate-to-high heterogeneity in each correlation across studies, and values for the Q -statistic indicated substantive heterogeneity in each model.

Bias estimates. As the confidence intervals of the correlations from the conventional meta-analysis did not encompass zero, the PEESE regression test was taken as an estimate of small study bias according to Stanley and Doucouliagos' (2014) rule. The test revealed substantive non-zero bias in the majority of the effects, with the exception of the attitude-past behavior, subjective norm-past behavior, perceived behavioral control-planning, and planning-behavior correlations (Table F1, Appendix F). However, the bias-corrected PEESE estimates did not alter conclusions with respect to whether effects were different from zero and their overall size.

Meta-Analytic Structural Equation Models

Proposed relations among the extended theory of planned behavior that included planning (Figure 1) and the original theory of planned behavior (Figure 2) structural equation models were tested by fitting the proposed model to the parameter estimates from the first stage of the meta-analytic structural equation modeling analysis. In addition, both models were estimated including and excluding past behavior as a predictor of all constructs in the model. Goodness-of-fit and overall homogeneity statistics for the models are presented in Table G1 (Appendix G, supplemental materials). All models exhibited acceptable model fit according to the multiple criteria adopted. Standardized parameter estimates and confidence intervals for the direct and indirect effects for the full and truncated models are presented in Tables 1 and 2³, respectively, with test statistics comparing differences in parameters for the models that included and excluded past behavior.

Focusing on the extended theory of planned behavior, averaged parameter effects indicated that attitudes, subjective norms, and perceived behavioral control were non-zero predictors of parents' intention to engage in parent-for-child health behaviors, intention was a non-zero predictor of planning, and intention, perceived behavioral control, and planning were non-zero predictors of

³Full results of these analyses are available in Tables H1 and H2, Appendix H, supplemental materials.

behavior. Effect sizes ranged from small-to-medium to medium in size, with the largest effects for the attitude-intention and intention-planning effects. There were also non-zero indirect effects of attitudes, subjective norms, and perceived behavioral control on behavior through intention, and a non-zero indirect effect of intention on behavior through planning. Effect sizes for the indirect effects of attitudes, subjective norms, and planning were considered substantive⁴. Inclusion of past behavior resulted in the attenuation of many of the observed effects, consistent with observations elsewhere (Hagger, Chan, et al., 2016; Hagger et al., 2018); however, confidence intervals of the difference in the parameter estimates all encompassed zero, suggesting that the differences were not substantive.

Unsurprisingly, parameter estimates for the model testing the theory of planned behavior were consistent with those of the full model. There were non-zero effects of attitudes, subjective norms, and perceived behavioral control on parents' intention, and intention and perceived behavioral control on behavior, with small-to-medium effect sizes. There were also non-zero indirect effects of attitudes, subjective norms, and perceived behavioral control on behavior through intention, which were substantive in size. Again, inclusion of past behavior attenuated model effects, but only the effect of intentions on behavior, and the indirect effect of subjective norms on behavior through intentions, was different across models.

Moderator Analyses

The small number of studies testing effects of planning meant that there were empty cells for key relations between planning, past behavior, and other constructs in the model for some of the moderator groups. As a consequence, we used the model testing the theory of planned behavior excluding planning and past behavior (Figure 2) for all moderator analyses. Effects of moderators were tested by estimating the model in groups of studies defined by levels of the child age, sample type, measurement lag, behavior type, and study quality moderator variables. The models all

⁴As standardized coefficients (β) for indirect effects are the product of multiple coefficients, standardized coefficients will be much smaller than those for direct effects. As a consequence, coefficients of .075 or larger were considered substantive while coefficients below this value were regarded trivial by comparison (Hagger, Koch, et al., 2017; Seaton, Marsh, & Craven, 2010).

exhibited adequate fit with the data based on multiple criteria (Table G1, Appendix G, supplemental materials). Standardized parameter estimates and comparisons across moderator groups are presented in Tables H3 to H11, (Appendix H, supplemental materials).

Moderator analyses revealed no differences in parameter estimates across moderator groups for the child age, sample type, and time lag moderators. For the behavior type moderator, the effect of subjective norms on parents' intention to perform parent-for-child health behaviors ($\beta = .567$, 95% CI [.300, .834]), and the indirect effect of subjective norms on behavior ($\beta = .277$, 95% CI [.152, .402]), were larger for the physical activity behaviors moderator group compared to protection or safety behaviors (direct effect, $\beta = .270$, 95% CI [.168, .373]; indirect effect, $\beta = .128$, 95% CI [.062, .195]) and dietary behaviors (direct effect, $\beta = .203$, 95% CI [.031, .375]; indirect effect, $\beta = .101$, 95% CI [.005, .198]) groups. There were no differences for these parameters across the dietary and the protection or safety behavior groups. For the study quality moderator, the intention-behavior relationship was smaller, and the perceived behavioral control-intention relationship larger, in studies classified as acceptable in quality (intention-behavior, $\beta = .385$, 95% CI [.257, .514]; perceived behavioral control-intention, $\beta = .261$, 95% CI [.134, .388]) compared to those with questionable quality (intention-behavior, $\beta = .615$, 95% CI [.445, .785]; perceived behavioral control-intention, $\beta = .092$, 95% CI [-.095, .280]). The pattern of moderator effects was consistent regardless of the cut-off value used to distinguish between acceptable and questionable quality studies, although, in some cases, the standard difference test approached but did not exceed conventional criterion for statistical significance (Appendix H).

Discussion

The present study tested the determinants of parents' performance of behaviors to promote the health of their child, referred to as parent-for-child health behaviors, based on the theory of planned behavior. An extended model was also tested in which planning served as an additional predictor of behavior and mediated the intention-behavior relationship. In addition, tests of effects of salient

moderators of theory effects, and whether model effects held when controlling for past behavior were conducted. Meta-analytic structural equation models supported the proposed pattern of effects among theory constructs, with attitudes, subjective norms, and perceived behavioral control predicting parents' intentions to perform health behaviors for their child, and intentions predicting behavior, all with small-to-medium sized effects. Effects of attitudes, subjective norms, and perceived behavioral control on the parent-for-child behaviors were mediated by intention, consistent with theory. In addition, planning independently predicted parent-for-child behaviors with a small effect size, and there was a non-trivial effect of planning on behavior mediated by intention. Model effects were attenuated but not extinguished with the inclusion of past behavior. Moderator analyses revealed few differences in effects across moderator groups, with the exception of the effect of subjective norms on intention and the indirect effect of subjective norms on behavior mediated by intention. These effects were larger for studies on parent-for-child physical activity behaviors compared to studies on dietary and protection or safety behaviors.

Current findings provide support for the key tenets of the theory of planned behavior for parent-for-child health behaviors. Results corroborate meta-analytic research applying the theory to predict individuals' performance of behaviors to promote their own health (McEachan et al., 2011; Rich et al., 2015). Across multiple studies, our findings indicate that parents' attitudes, subjective norms, and perceived behavioral control predicted their intention to perform parent-for-child health behaviors, and intention and perceived behavioral control predicted parents' behavior. The current research also implicated intention in the process by which beliefs relate to behavior; intention mediated the effect of attitudes, subjective norms, and perceived behavioral control on behavior. These findings extend the application of the theory to predict a unique set of health behaviors that are likely to have important effects on children's long-term health and the prevention of chronic disease. Findings indicate that the same set of social cognition constructs that predict performance of behaviors aimed at promoting personal health also predict parent-for-child behaviors.

Parents play an essential role in the socialization of children into healthy lifestyles (Maccoby, 1992), and their influence is integral to the promotion and modeling of health behaviors for their children (Keech, Hatzis, Kavanagh, White, & Hamilton, 2018). A key contribution of the current research is their potential to guide efforts to promote parents' participation in behaviors to promote their children's health by identifying modifiable constructs to target in behavioral interventions. The mediation effects suggest that targeting change in the determinants of intention may have a concomitant effect on behavior, consistent with recent experimental evidence (Sheeran et al., 2016). For example, attitudes could be changed through information provision, communication-persuasion, and cognitive dissonance techniques (e.g., Hamilton & Johnson, 2020; Keech, Cole, Hagger, & Hamilton, 2020), subjective norms changed using techniques such as establishing social norms and mobilizing social support (Borek et al., 2019; Norman et al., 2018); and perceived behavioral control through providing mastery and vicarious experiences (Sniehotta, 2009; Warner & French, 2020). In addition, current findings may also pave the way for research and interventions in other contexts in which decisions are made for others such as adult children performing support behaviors for their aging parents or caregivers providing support for relatives with long-term health conditions.

An important consideration when interpreting the effects in the current models is the practical significance of the small-to-medium effect sizes. The meta-analysis reflects aggregate effects of the social cognition and planning constructs on multiple behaviors across studies, so current results provide general guidance on the expected size of the relationship between a measure of a model construct and a parent-for-child behavior in any given study. As an illustration, consider the small-to-medium sized effect of intentions on behavior (standardized effect, $\beta = .329$); this suggests that a unit variation in intentions should be met by a third of a unit variation in behavior. This level of change is consistent with the effect sizes observed in syntheses of intervention research targeting change in intentions (Webb & Sheeran, 2006) and theory of planned behavior constructs (Sheeran et al., 2016). In addition, interventions based on the theory of planned behavior have demonstrated similar-sized

effects on parent-for-child intentions and behavior (Abhyankar et al., 2008; Hatefnia, Alinasab, & Ghorbani, 2017), and such effects relate to meaningful numbers of individuals exhibiting change in the targeted behaviors (e.g., numbers of mothers intending to vaccinate their child). However, it should be stressed that current data are based on correlational evidence, which should not be taken as analogous to causal evidence from interventions or experimental research. So, the effects identified in the current study should only be considered indicative of the level of the model constructs and behavior relative to each other, rather than direct guidance for intervention or expected meaningful intervention effects.

Current findings also indicate that planning mediates the intention-behavior relationship, consistent with dual phase models such as the health action process approach (Schwarzer, 2008; Schwarzer & Hamilton, 2020; Zhang et al., 2019). This suggests that self-regulatory skills such as action plans are potential means by which parents overcome obstacles that inhibit acting on their intention to perform parent-for-child health behaviors. Planning, then, should be considered an important component of interventions aimed at promoting parent-for-child health behaviors. Such interventions might entail prompting parents to identify appropriate environmental cues and link them with the intended behavior to promote the health of their child, such as action plans (Schwarzer, 2008) or 'implementation intention' (Gollwitzer, 1999).

A further important finding in the current research was the relatively small number of moderator effects found on the relations between constructs in the proposed model for parent-for-child health behaviors. Specifically, model effects were found to be consistent across demographic (age of child, sample type), methodological (time lag between measures of theory constructs and behavior), and conceptual (behavior type) moderators. The lack of moderator effects reflects that the observed variability in model effects for parent-for-child behaviors was not attributable to this set of moderators, and perhaps other moderator variables not coded for in the current analysis were responsible for the effect. Conversely, it may be that there was insufficient range in the coded

moderators to account for variation across studies. For example, many of the studies did not provide long-range prediction of behaviors – the vast majority included a follow-up of fewer than five weeks which limited evaluation as to whether model effects varied by time lag between measures.

The only moderator effects identified were those for behavior type and study quality. For the behavior type moderator analysis, larger direct effects of subjective norms on intention, and indirect effects of subjective norms on behavior through intention, were observed in studies on physical activity relative to studies on dietary and protection or safety behaviors. This suggests that beliefs reflecting perceived social pressure or support to perform the behavior may be more important when it comes to parents supporting or promoting physical activity behaviors for their child. To speculate, social pressure and support may be more salient when it comes to performing of behaviors that require greater social involvement. Physical activity behaviors often require the parent to become personally involved, such as parents directly participating in physical activities with their children, like playing games in the backyard, or watching or co-acting in activities with their children, such as taking their children to the swimming pool or to dance lessons. Social influences may be more pervasive for these behaviors compared to protection or safety behaviors (sunscreen, vaccination) and dietary behaviors (cooking meals), which often involve the parent directly performing the behavior for the child.

For the study quality moderator analysis, the intention-behavior relationship was smaller in studies of acceptable quality relative to those with questionable quality. There was also a trend toward a larger perceived behavioral control-behavior effects in studies with questionable quality compared to those with acceptable quality. Studies with lower quality may lead to imprecision in effect size estimates. The additional error variance associated with imprecisions in study design may lead to an attenuation or inflation of relations (Johnson, Low, & MacDonald, 2014). While these differences did not lead to an invalidation of the model because effects were non-zero in both moderator groups, it highlights the potential consequences of imprecision in study methods on estimation of effects. This

suggests that researchers conducting predictive studies in this domain could potentially minimize bias in model results by accounting for study quality features at the inception and design phases.

A final notable finding in the current research is that although past behavior predicted all constructs and attenuated the size of the intention-behavior relationship, the pattern of effects in the model remained unchanged. The attenuation of model effects by past behavior has been observed in many other applications of the theory of planned behavior (e.g., Albarracín, Johnson, Fishbein, & Muellerleile, 2001; Chatzisarantis, Hagger, Smith, & Phoenix, 2004; Hagger, Chan, et al., 2016). Its inclusion is important because it provides a test of the sufficiency of the theory (Ajzen, 1991). A sufficient theory needs to account for unique variance in behavior and mediate effects of past behavior on subsequent behavior. If it does not, it is insufficient as a means to explain behavioral consistency. Current findings confirmed that past behavior effects on subsequent behavior were partially mediated by the social cognition constructs from the theory, providing support for theory sufficiency in the context of parent-for-child health behaviors. Mediation of past behavior effects by the belief-based constructs from the theory are proposed to represent previous decision making and individuals formation of beliefs on the basis of previous experience (Ajzen, 2002; Hagger, Chan, et al., 2016).

However, substantive residual effects of past behavior on subsequently-measured behavior were also observed in the current analysis, consistent with previous research (Hagger, Chan, et al., 2016; Hagger et al., 2018). Numerous explanations have been put forward to explain these residual effects. For example, past behavior is suggested to serve as a ‘proxy’ for habits, or reflect effects of unmeasured behavioral determinants. Better understanding of the processes reflected by past behavior effects necessitates identification of potential mediators of the residual effects. One candidate mediator is a measure of habit; research has demonstrated that self-reported habit mediates past behavior effects on behavior within the theory of planned behavior supporting the proposition that past behavior, at least in part, reflects habits (Hamilton, Gibbs, Keech, & Hagger, 2020; van Bree et

al., 2015). In addition, residual effects of past behavior unmediated by intention may reflect effects of non-conscious determinants or individual difference factors on behavior, such as implicit attitudes, and personality (Conner & Abraham, 2001; Hagger, Trost, Keech, Chan, & Hamilton, 2017; Hamilton et al., 2020; Vo & Bogg, 2015). Future research should seek to establish whether residual effects of past behavior for parent-for-child health behaviors are mediated by habit or constructs representing non-conscious processes.

Strengths, Limitations, and Avenues for Future Research

Strengths of the current research include the focus on the determinants of parents' behaviors to promote their children's health, an important and unique behavioral context; an appropriate theoretical approach; wide coverage of research in across multiple health behaviors (e.g., physical activity, protection or safety, and dietary behaviors); use of appropriate synthesis and analytic techniques to test theory predictions across studies; and a robust test of candidate moderators on model effects. However, a number of limitations should be highlighted. High heterogeneity was observed in the parameter estimates of the models across studies, and current moderator analyses did not resolve the heterogeneity, suggesting the likely presence of moderators, but analyses of current moderators did not resolve the extent heterogeneity. One of the limitations of the current research is that we unable to test effects of theory-based moderators of model effects. For example, planning may moderate the effect of parents' intention on their performance of health promoting behavior for their children, consistent with previous research in other behavioral domains (e.g., de Bruijn, Rhodes, & van Osch, 2012). However, there were insufficient studies testing this effect precluding a test of this moderation hypothesis. Furthermore, the protection or safety behaviors moderator variable comprised multiple behaviors aimed at reducing health risk to the child such as vaccination, use of car seats, providing medication, sunscreen use, supervised tooth brushing, and injury prevention practices. The wide range of health behaviors included in this moderator variable likely contributed to the high variability observed within the moderator groups. The ongoing expansion of the research literature in

this domain may permit a more fine-grained moderator analysis of specific protection or safety behaviors in future, which may be instrumental to resolving the variability.

Another limitation was that all data in the current sample of studies were correlational in design, so reported effects reflect prediction rather than change and causal effects in the models are inferred from theory alone not the data. Future research adopting cross-lagged panel, experimental, or intervention designs is required in order to make better inferences of change and causation. Linked to this, current analysis is limited due to the exclusive reliance on self-report measures of behavior. Such measures present an increased risk of bias and, therefore, potential for introducing method error to reported effects, attributable to recall bias and socially desirable responding. There is considerable need for studies in this domain to conduct research that verifies model effects without reliance on self-report behavioral measures.

In addition, that our moderator analyses did not resolve the heterogeneity in effects across studies suggests the presence of other moderators. Furthermore, we did not include pertinent control variables in our model test such as parent age and resource availability (e.g., access to childcare, financial and social support). Limitations in data availability and reporting precluded such analyses. For example, parental age was highly variable within and across studies, limiting coding of a meaningful parental age moderator variable, and few studies measured or reported relations between variables relating to resources, such as childcare access, and study constructs. As the literature on social cognition determinants of parent-for-child behaviors expands, future syntheses may have access to sufficient data to examine the moderating effects of these variables on relations between model variables or control for their effects.

Finally, the theory of planned behavior was only extended to include planning as an additional construct. Other constructs have been shown to be important predictors of parent-for-child health behaviors such as role construction, moral norms, anticipated affect, and action control (Hamilton et al., 2018; Hamilton, Kirkpatrick, Rebar, White, & Hagger, 2017; Hamilton, Peden, Smith, & Hagger,

2019; Schmidt & Hamilton, 2017). Furthermore, the theory does not provide a clear account for health behaviors that have a social or dyadic component (Scholz, Berli, Lüscher, & Knoll, 2020), nor does it explicitly account for effects of socio-demographic variables such as education, income, or other indices of socio-economic status (Schüz, 2017). Such variables have become important topics in research extending the theory of planned behavior, and may be important considerations that need to be accounted for in future research applying this theory to parent-for-child behaviors. As the research in this area expands, future research syntheses may be able to include a wider range of potentially important determinants toward a more comprehensive and precise model of parent-for-child behaviors.

Conclusion

Current findings provide the first synthesis of the determinants of parent-for-child health behaviors on the theory of planned behavior. The current analysis makes a unique contribution to knowledge by identifying the extent to which theory-based constructs determine parent-for-child health behaviors across multiple studies. The study also extended the theory to include planning and past behavior as additional determinants, and tested effects of candidate moderators on theory relationships. Findings provide support for the predictions of the theory of planned behavior, identifying attitudes, subjective norms, and perceived behavioral control as predictors of parents' intention to perform health-promoting behaviors for their children, and intention, planning, perceived behavioral control, and past behavior as predictors of actual behavior. The model also provides some indication of the processes by which these constructs relate to behavior, with intention mediating effects of beliefs and past behavior on behavior, and planning mediating the intention-behavior relationship. This knowledge provides valuable formative evidence of potential targets in behavior change interventions aimed at promoting parents' behaviors to promote their children's health. Study findings also set the agenda for future research to address gaps in knowledge in the application of the theory of planned behavior to parent-for-child health behaviors.

References

References marked with an asterisk indicate studies included in the meta-analysis.

- *Abhyankar, P., O'Connor, D. B., & Lawton, R. (2008). The role of message framing in promoting MMR vaccination: Evidence of a loss-frame advantage. *Psychology, Health & Medicine, 13*, 1-16. <https://doi.org/10.1080/13548500701235732>
- *Abizari, A.-R., Pilime, N., Armar-Klemesu, M., & Brouwer, I. D. (2013). Cowpeas in northern Ghana and the factors that predict caregivers' intention to give them to schoolchildren. *PLoS ONE, 8*, e72087. <https://doi.org/10.1371/journal.pone.0072087>
- Ajzen, I. (1991). The theory of planned behavior. *Organizational Behavior and Human Decision Processes, 50*, 179-211. [https://doi.org/10.1016/0749-5978\(91\)90020-T](https://doi.org/10.1016/0749-5978(91)90020-T)
- Ajzen, I. (2002). Residual effects of past on later behavior: Habituation and reasoned action perspectives. *Personality and Social Psychology Review, 6*, 107-122. https://doi.org/10.1207/S15327957PSPR0602_02
- Albarracín, D., Johnson, B. T., Fishbein, M., & Muellerleile, P. A. (2001). Theories of reasoned action and planned behavior as models of condom use: A meta-analysis. *Psychological Bulletin, 127*, 142-161. <https://doi.org/10.1037/0033-2909.127.1.142>
- Andrews, K. R., Silk, K. S., & Eneli, I. U. (2010). Parents as health promoters: A theory of planned behavior perspective on the revention of childhood obesity. *Journal of Health Communication, 15*, 95-107. <https://doi.org/10.1080/10810730903460567>
- *Askelson, N. M., Campo, S., Smith, S., Lowe, J. B., Dennis, L. K., & Andsager, J. (2011). The birds, the bees, and the HPVs: What drives Mothers' intentions to use the HPV vaccination as a chance to talk about sex? *Journal of Pediatric Health Care, 25*, 162-170. <https://doi.org/10.1016/j.pedhc.2010.01.001>
- *Åström, A. N., & Kiwanuka, S. N. (2006). Examining intention to control preschool children's sugar snacking: A study of carers in Uganda. *International Journal of Paediatric Dentistry, 16*, 10-18. <https://doi.org/10.1111/j.1365-263X.2006.00671.x>
- *Bai, Y. K., Dinour, L. M., & Pope, G. A. (2016). Determinants of the intention to pump breast milk on a university campus. *Journal of Midwifery & Women's Health, 61*, 563-570. <https://doi.org/10.1111/jmwh.12488>
- Borek, A. J., Abraham, C., Greaves, C. J., Gillison, F., Tarrant, M., Morgan-Trimmer, S., . . . Smith, J. R. (2019). Identifying change processes in group-based health behaviour-change interventions: Development of the mechanisms of action in group-based interventions (MAGI) framework. *Health Psychology Review, 13*, 227-247. <https://doi.org/10.1080/17437199.2019.1625282>
- *Bos, A., Hoogstraten, J., & Prahl-Andersen, B. (2005). The theory of reasoned action and patient compliance during orthodontic treatment. *Community Dentistry and Oral Epidemiology, 33*, 419-426. <https://doi.org/10.1111/j.1600-0528.2005.00241.x>
- *Bracchitta, K. M. (2006). Factors influencing parental use of booster seats for their children. *Journal of Clinical Psychology in Medical Settings, 13*, 270. <https://doi.org/10.1007/s10880-006-9023-x>
- Carter, E. C., Schonbrodt, F., Gervais, W., & Hilgard, J. (2019). Correcting for bias in psychology: A comparison of meta-analytic methods. *Advances in Methods and Practices in Psychological Science, 2*, 115-144. <https://doi.org/10.1177/2515245919847196>
- *Charron-Prochownik, D., Becker, M. H., Brown, M. B., Liang, W.-M., & Bennett, S. (1993). Understanding young children's health beliefs and diabetes regimen adherence. *The Diabetes Educator, 19*, 409-418. <https://doi.org/10.1177/014572179301900508>
- Chatzisarantis, N. L. D., Hagger, M. S., Smith, B., & Phoenix, C. (2004). The influences of continuation intentions on the execution of social behaviour within the theory of planned

- behaviour. *British Journal of Social Psychology*, 43, 551-583.
<https://doi.org/10.1348/0144666042565399>
- Cheung, M. W. L., & Hong, R. Y. (2017). Applications of meta-analytic structural equation modeling in health psychology: Examples, issues, and recommendations. *Health Psychology Review*, 11, 265-279. <https://doi.org/10.1080/17437199.2017.1343678>
- Cochran, W. G. (1952). The χ^2 test of goodness of fit. *Annals of Mathematical Statistics*, 23, 315-345.
<https://doi.org/10.1214/aoms/1177692778>
- Conner, M. T., & Norman, P. (2015). Predicting and changing health behaviour: A social cognition approach. In M. T. Conner & P. Norman (Eds.), *Predicting and changing health behaviour: Research and practice with social cognition models* (3rd ed., pp. 1-29). Maidenhead, UK: Open University Press.
- Conner, M. T., & Abraham, C. (2001). Conscientiousness and the theory of planned behavior: Toward a more complete model of the antecedents of intentions and behavior. *Personality and Social Psychology Bulletin*, 27, 1547-1561. <https://doi.org/10.1177/01461672012711014>
- de Bruijn, G.-J., Rhodes, R. E., & van Osch, L. (2012). Does action planning moderate the intention-habit interaction in the exercise domain? A three-way interaction analysis investigation. *Journal of Behavioral Medicine*, 35, 509-519. <https://doi.org/10.1007/s10865-011-9380-2>
- *de Vries, H., van Osch, L., Eijmael, K., Smerecnik, C., & Candel, M. (2012). The role of risk perception in explaining parental sunscreen use. *Psychology & Health*, 27, 1342-1358.
<https://doi.org/10.1080/08870446.2012.684059>
- Del Re, A. C., & Hoyt, W. T. (2018, August 31, 2018). Package 'MAc': Meta-analysis with correlations. Retrieved November 1, 2018, from <https://cran.r-project.org/web/packages/MAc/MAc.pdf>
- Egger, M., Smith, D. G., Schneider, M., & Minder, C. (1997). Bias in meta-analysis detected by a simple, graphical test. *BMJ*, 315, 629-634. <https://doi.org/10.1136/bmj.315.7109.629>
- *Fahy, A., & Desmond, D. M. (2010). Irish mothers' intentions to have daughters receive the HPV vaccine. *Irish Journal of Medical Science*, 179, 427-430. <https://doi.org/10.1007/s11845-010-0501-7>
- Fishbein, M., Triandis, H. C., Kanfer, F. H., Becker, M., Middlestadt, S. E., & Eichler, A. (2001). Factors influencing behavior and behavior change. In A. Baum, T. A. Revenson & J. E. Singer (Eds.), *Handbook of Health Psychology* (pp. 3-17). Mahwah, NJ: Lawrence Erlbaum.
- GBD 2015 Collaborators. (2016). Global, regional, and national life expectancy, all-cause mortality, and cause-specific mortality for 249 causes of death, 1980–2015: A systematic analysis for the GBD Study 2015. *The Lancet*, 388, 1459-1544. [https://doi.org/10.1016/S0140-6736\(16\)31012-1](https://doi.org/10.1016/S0140-6736(16)31012-1)
- Gollwitzer, P. M. (1999). Implementation intentions: Strong effects of simple plans. *American Psychologist*, 54, 493-503. <https://doi.org/10.1037/0003-066X.54.7.493>
- *Goodnight, B., Salama, C., Grim, E. C., Anthony, E. R., Armistead, L., Cook, S. L., . . . Toefy, Y. (2014). Perceived control and communication about sex: A study of South African families. *African Journal of AIDS Research*, 13, 31-36. <https://doi.org/10.2989/16085906.2014.892016>
- Gwet, K. L. (2008). Computing inter-rater reliability and its variance in the presence of high agreement. *British Journal of Mathematical and Statistical Psychology*, 61, 29-48.
<https://doi.org/doi:10.1348/000711006X126600>
- Hagger, M. S., Cameron, L. D., Hamilton, K., Hankonen, N., & Lintunen, T. (Eds.). (2020). *The handbook of behavior change*. New York, NY: Cambridge University Press.
<https://doi.org/10.1017/97811086773180>
- Hagger, M. S., Chan, D. K. C., Protogerou, C., & Chatzisarantis, N. L. D. (2016). Using meta-analytic path analysis to test theoretical predictions in health behavior: An illustration based on meta-analyses of the theory of planned behavior. *Preventive Medicine*, 89, 154-161.
<https://doi.org/10.1016/j.ypmed.2016.05.020>

- Hagger, M. S., & Hamilton, K. (2019). Health behavior, health promotion, and the transition to parenthood: Insights from research in health psychology and behavior change. In O. Taubman-Ben-Ari (Ed.), *Pathways and barriers to parenthood: Existential concerns regarding fertility, pregnancy, and early parenthood* (pp. 251-269). Cham, Switzerland: Springer.
https://doi.org/10.1007/978-3-030-24864-2_15
- Hagger, M. S., Koch, S., Chatzisarantis, N. L. D., & Orbell, S. (2017). The common-sense model of self-regulation: Meta-analysis and test of a process model. *Psychological Bulletin*, *143*, 1117-1154. <https://doi.org/10.1037/bul0000118>
- Hagger, M. S., Luszczynska, A., de Wit, J., Benyamini, Y., Burkert, S., Chamberland, P.-E., . . . Gollwitzer, P. M. (2016). Implementation intention and planning interventions in health psychology: Recommendations from the Synergy expert group for research and practice. *Psychology & Health*, *31*, 814-839. <https://doi.org/10.1080/08870446.2016.1146719>
- Hagger, M. S., Polet, J., & Lintunen, T. (2018). The reasoned action approach applied to health behavior: Role of past behavior and test of some key moderators using meta-analytic structural equation modeling. *Social Science & Medicine*, *213*, 85-94.
<https://doi.org/10.1016/j.socscimed.2018.07.038>
- Hagger, M. S., Trost, N., Keech, J., Chan, D. K. C., & Hamilton, K. (2017). Predicting sugar consumption: Application of an integrated dual-process, dual-phase model. *Appetite*, *116*, 147-156. <https://doi.org/10.1016/j.appet.2017.04.032>
- Hamilton, K., Cleary, C., White, K. M., & Hawkes, A. (2016). Keeping kids sun safe: Exploring parents' beliefs about their young child's sun-protective behaviours. *Psycho-Oncology*, *25*, 158-163. <https://doi.org/10.1002/pon.3888>.
- *Hamilton, K., Cornish, S., Kirkpatrick, A., Kroon, J., & Schwarzer, R. (2018). Parental supervision for their children's toothbrushing: Mediating effects of planning, self-efficacy, and action control. *British Journal of Health Psychology*, *23*, 387-406. <https://doi.org/10.1111/bjhp.12294>
- *Hamilton, K., Daniels, I., White, K. M., Murray, N., & Walsh, A. (2011). Predicting mothers' decisions to introduce complementary feeding at 6 months: an investigation using an extended Theory of Planned Behaviour. *Appetite*, *56*, 674-681.
<https://doi.org/10.1016/j.appet.2011.02.002>
- Hamilton, K., Gibbs, I., Keech, J. J., & Hagger, M. S. (2020). Reasoned and implicit processes in heavy episodic drinking: An integrated dual process model. *British Journal of Health Psychology*, *25*, 189-209. <https://doi.org/10.1111/BJHP.12401>
- Hamilton, K., Hatzis, D., Kavanagh, D. J., & White, K. M. (2015). Exploring parents' beliefs about their young child's physical activity and screen time behaviours. *Journal of Child and Family Studies*, *24*, 2638-2652. <https://doi.org/10.1007/s10826-014-0066-6>
- Hamilton, K., & Johnson, B. T. (2020). Attitude and persuasive communication interventions. In M. S. Hagger, L. D. Cameron, K. Hamilton, N. Hankonen & T. Lintunen (Eds.), *The handbook of behavior change* (pp. 445-460). New York, NY: Cambridge University Press.
<https://doi.org/10.1017/97811086773180.031>
- *Hamilton, K., Kirkpatrick, A., Rebar, A., & Hagger, M. S. (2017). Child sun safety: Application of an integrated behavior change model. *Health Psychology*, *36*, 916-926.
<https://doi.org/10.1037/hea0000533>
- *Hamilton, K., Kirkpatrick, A., Rebar, A., White, K. M., & Hagger, M. S. (2017). Protecting young children against skin cancer: Parental beliefs, roles, and regret. *Psycho-Oncology*, *26*, 2135-2141. <https://doi.org/10.1002/pon.4434>
- Hamilton, K., Kothe, E. J., Mullan, B., & Spinks, T. (2017). The mediating and moderating role of planning on mothers' decisions for early childhood dietary behaviours. *Psychology & Health*, *32*, 1518-1533. <https://doi.org/10.1080/08870446.2017.1351970>

- Hamilton, K., Peden, A. E., Smith, S., & Hagger, M. S. (2019). Predicting pool safety habits and intentions of Australian parents and carers for their young children. *Journal of Safety Research, 71*, 285-294. <https://doi.org/10.1016/j.jsr.2019.09.006>
- *Hamilton, K., & Schwarzer, R. (2018). Making plans to facilitate young children's physical activity: The role of psycho-social mediators and moderators. *Journal of Child and Family Studies, 27*, 421-430. <https://doi.org/10.1007/s10826-017-0893-3>
- *Hamilton, K., Spinks, T., White, K. M., Kavanagh, D. J., & Walsh, A. M. (2016). A psychosocial analysis of parents' decisions for limiting their young child's screen time: An examination of attitudes, social norms and roles, and control perceptions. *British Journal of Health Psychology, 21*, 285-301. <https://doi.org/10.1111/bjhp.12168>
- *Hamilton, K., Thomson, C. E., & White, K. M. (2013). Promoting active lifestyles in young children: Investigating mothers' decisions about their child's physical activity and screen time behaviours. *Maternal and Child Health Journal, 17*, 968-976. <https://doi.org/10.1007/s10995-012-1081-0>
- *Hatefnia, E., Alinasab, A., & Ghorbani, M. (2017). Impact of theory-based educational intervention on promotion of caries prevention behaviors in Iranian mothers with 3-6-year-old children. *Biomedical Research, 28*, 1969-1974.
- Heckhausen, H., & Gollwitzer, P. M. (1987). Thought contents and cognitive functioning in motivational and volitional states of mind. *Motivation and Emotion, 11*, 101-120. <https://doi.org/10.1007/BF00992338>
- *Hofman, R., van Empelen, P., Richardus, J. H., de Kok, I. M. C. M., de Koning, H. J., van Ballegooijen, M., & Korfage, I. J. (2013). Predictors of HPV vaccination uptake: A longitudinal study among parents. *Health Education Research, 29*, 83-96. <https://doi.org/10.1093/her/cyt092>
- *Hounsa, A. M., Godin, G., Alihonou, E., Valois, P., & Girard, J. (1993). An application of Ajzen's theory of planned behaviour to predict mothers' intention to use oral rehydration therapy in a rural area of Benin. *Social Science & Medicine, 37*, 253-261. [https://doi.org/10.1016/0277-9536\(93\)90459-H](https://doi.org/10.1016/0277-9536(93)90459-H)
- Hu, L., & Bentler, P. M. (1999). Cutoff criteria for fit indexes in covariance structure analysis: Conventional criteria versus new alternatives. *Structural Equation Modeling, 6*, 1-55. <https://doi.org/10.1080/10705519909540118>
- Hunter, J. E., & Schmidt, F. L. (2004). *Methods of meta-analysis: Correcting error and bias in research findings* (2nd ed.). Newbury Park, CA: Sage.
- *Ice, C. L., Neal, W. A., & Cottrell, L. (2014). Parental efficacy and role responsibility for assisting in child's healthful behaviors. *Education & Urban Society, 46*, 699-715. <https://doi.org/10.1177/0013124512468004>
- *Janicke, D. M., & Finney, J. W. (2003). Children's Primary Health Care Services: Social-Cognitive Factors Related to Utilization. *Journal of Pediatric Psychology, 28*, 547-558. <https://doi.org/10.1093/jpepsy/jsg045>
- Johnson, B. T., & Acabchuk, R. L. (2018). What are the keys to a longer, happier life? Answers from five decades of health psychology research. *Social Science & Medicine, 196*, 218-226. <https://doi.org/10.1016/j.socscimed.2017.11.001>
- Johnson, B. T., Low, R. E., & MacDonald, H. V. (2014). Panning for the gold in health research: Incorporating studies' methodological quality in meta-analysis. *Psychology & Health, 30*, 135-152. <https://doi.org/10.1080/08870446.2014.953533>
- *Johnson, L., Chen, T.-A., Hughes, S. O., & O'Connor, T. M. (2015). The association of parent's outcome expectations for child TV viewing with parenting practices and child TV viewing: An examination using path analysis. *International Journal of Behavioral Nutrition and Physical Activity, 12*, 70. <https://doi.org/10.1186/s12966-015-0232-2>
- *Kafulafula, U. K., Hutchinson, M. K., Gennaro, S., Gutmacher, S., & Kunitawa, A. (2013). Exclusive breastfeeding prenatal intentions among HIV-positive mothers in Blantyre, Malawi:

- A correlation study. *BMC Pregnancy and Childbirth*, 13, 203. <https://doi.org/10.1186/1471-2393-13-203>
- Keech, J. J., Cole, K. L., Hagger, M. S., & Hamilton, K. (2020). The association between stress mindset and physical and psychological wellbeing: Testing a stress beliefs model in police officers. *Psychology & Health*. <https://doi.org/10.1080/08870446.2020.1743841>
- Keech, J. J., Hatzis, D., Kavanagh, D. J., White, K. M., & Hamilton, K. (2018). Parents' role constructions for facilitating physical activity-related behaviours in their young children. *Australian Journal of Psychology*, 70, 246-257. <https://doi.org/10.1111/ajpy.12195>
- *Lampard, A. M., Jurkowski, J. M., & Davison, K. K. (2013). Social-cognitive predictors of low-income parents' restriction of screen time among preschool-aged children. *Health Education & Behavior*, 40, 526-530. <https://doi.org/10.1177/1090198112467800>
- *Lee, C.-J., & Kam, J. A. (2015). Why does social capital matter in health communication campaigns? *Communication Research*, 42, 459-481. <https://doi.org/10.1177/0093650214534968>
- Li, Y., Pan, A., Wang, D. D., Liu, X., Dhana, K., Franco, O. H., . . . Hu, F. B. (2018). Impact of healthy lifestyle factors on life expectancies in the US population. *Circulation*. <https://doi.org/10.1161/CIRCULATIONAHA.117.032047>
- *Lwin, M. O., & Saw, S.-M. (2007). Protecting children from myopia: A PMT perspective for improving health marketing communications. *Journal of Health Communication*, 12, 251-268. <https://doi.org/10.1080/10810730701266299>
- Maccoby, E. E. (1992). The role of parents in the socialization of children: An historical overview. *Developmental Psychology*, 28, 1006-1017. <https://doi.org/10.1037/0012-1649.28.6.1006>
- *Manstead, A. S. R., Plevin, C. E., & Smart, J. L. (1984). Predicting mothers' choice of infant feeding method. *British Journal of Social Psychology*, 23, 223-231. <https://doi.org/10.1111/j.2044-8309.1984.tb00633.x>
- *Manstead, A. S. R., Proffitt, C., & Smart, J. L. (1983). Predicting and understanding methods of infant-feeding intentions and behavior: Testing the theory of reasoned action. *Journal of Personality and Social Psychology*, 44, 657-671. <https://doi.org/10.1037/0022-3514.44.4.657>
- *McDonald, E., Cunningham, T., & Slavin, N. (2015). Evaluating a handwashing with soap program in Australian remote Aboriginal communities: a pre and post intervention study design. *BMC Public Health*, 15, 1188. <https://doi.org/10.1186/s12889-015-2503-x>
- McEachan, R. R. C., Conner, M. T., Taylor, N., & Lawton, R. J. (2011). Prospective prediction of health-related behaviors with the theory of planned behavior: A meta-analysis. *Health Psychology Review*, 5, 97-144. <https://doi.org/10.1080/17437199.2010.521684>
- McMillan, B., & Conner, M. (2007). Health cognition assessment. In A. B. S. Ayers, C. McManus, S. Newman, K. Wallston, J. Weinman, & R. West (Ed.), *Cambridge Handbook of Psychology, Health and Medicine* (2nd ed., pp. 260-266). Cambridge, UK: Cambridge University Press.
- Moher, D., Liberati, A., Tetzlaff, J., Altman, D. G., & the PRISMA Group. (2009). Preferred reporting items for systematic reviews and meta-analyses: The PRISMA statement. *PLOS Med*, 6, e1000097. <https://doi.org/10.1371/journal.pmed.1000097>
- *Norman, P., Cameron, D., Epton, T., Webb, T. L., Harris, P. R., Millings, A., & Sheeran, P. (2018). A randomized controlled trial of a brief online intervention to reduce alcohol consumption in new university students: Combining self-affirmation, theory of planned behaviour messages, and implementation intentions. *British Journal of Health Psychology*, 23, 108-127. <https://doi.org/10.1111/bjhp.12277>
- Norman, P., Searle, A., Harrad, R., & Vedhara, K. (2003). Predicting adherence to eye patching in children with amblyopia: An application of protection motivation theory. *British Journal of Health Psychology*, 8, 67-82. <https://doi.org/doi:10.1348/135910703762879219>
- *O'Connor, T. M., Chen, T.-A., del Rio Rodriguez, B., & Hughes, S. O. (2014). Psychometric validity of the parent's outcome expectations for children's television viewing (POETV) scale. *BMC Public Health*, 14, 894. <https://doi.org/10.1186/1471-2458-14-894>

- Orbell, S., & Sheeran, P. (1998). 'Inclined abstainers': A problem for predicting health related behaviour. *British Journal of Social Psychology*, *37*, 151-165. <https://doi.org/10.1111/j.2044-8309.1998.tb01162.x>
- *Poorolajal, J., Cheraghi, P., Hazavehei, S. M., & Rezapur-Shahkolai, F. (2012). Factors associated with mothers' beliefs and practices concerning injury prevention in under five-year children, based on health belief model. *Journal of Research in Health Sciences*, *13*, 63-68. <https://doi.org/10.1016/j.puhe.2014.06.017>
- *Rhodes, R. E., Berry, T., Craig, C. L., Faulkner, G., Latimer-Cheung, A., Spence, J. C., & Tremblay, M. (2013). Understanding parental support of child physical activity behavior. *American Journal of Health Behavior*, *37*, 469-477. <https://doi.org/10.5993/AJHB.37.4.5>
- Rhodes, R. E., & de Bruijn, G. J. (2013). How big is the physical activity intention-behaviour gap? A meta-analysis using the action control framework. *British Journal of Health Psychology*, *18*, 296-309. <https://doi.org/10.1111/bjhp.12032>
- *Rhodes, R. E., Spence, J. C., Berry, T., Deshpande, S., Faulkner, G., Latimer-Cheung, A. E., . . . Tremblay, M. S. (2016). Understanding action control of parental support behavior for child physical activity. *Health Psychology*, *35*, 131-140. <https://doi.org/10.1037/hea0000233>
- Rich, A., Brandes, K., Mullan, B. A., & Hagger, M. S. (2015). Theory of planned behavior and adherence in chronic illness: A meta-analysis. *Journal of Behavioral Medicine*, *38*, 673-688. <https://doi.org/10.1007/s10865-015-9644-3>
- Rothman, A. J., Gollwitzer, P. M., Grant, A. M., Neal, D. T., Sheeran, P., & Wood, W. (2015). Hale and hearty policies: How psychological science can create and maintain healthy habits. *Perspectives on Psychological Science*, *10*, 701-705. <https://doi.org/10.1177/1745691615598515>
- *Russell, K. (1991). Development of an instrument to assess maternal childhood injury health beliefs and social influence. *Issues in Comprehensive Nursing*, *14*, 163-177. <https://doi.org/10.3109/01460869109014496>
- Schenker, N., & Gentleman, J. F. (2001). On judging the significance of differences by examining the overlap between confidence intervals. *The American Statistician*, *55*, 182-186. <https://doi.org/10.1198/000313001317097960>
- Schmidt, H., & Hamilton, K. (2017). Visiting public libraries with young children: An investigation of individual and community factors among caregivers in an area of socio-economic disadvantage. *Early Years*. <https://doi.org/10.1080/09575146.2017.1389855>
- Scholz, U., Berli, C., Lüscher, J., & Knoll, N. (2020). Dyadic behavior change interventions. In M. S. Hagger, L. D. Cameron, K. Hamilton, N. Hankonen & T. Lintunen (Eds.), *The Handbook of Behavior Change* (pp. 632-648). New York, NY: Cambridge University Press. <https://doi.org/10.1017/97811086773180.043>
- *Schuster, L., Kubacki, K., & Rundle-Thiele, S. (2016). Understanding caregivers' intentions for their child to walk to school: Further application of the theory of planned behavior. *Health Marketing Quarterly*, *33*, 307-320. <https://doi.org/10.1080/07359683.2016.1240521>
- Schüz, B. (2017). Socio-economic status and theories of health behaviour: Time to upgrade a control variable. *British Journal of Health Psychology*, *22*, 1-7. <https://doi.org/10.1111/bjhp.12205>
- Schwarzer, R. (2008). Modeling health behaviour change: How to predict and modify the adoption and maintenance of health behaviors. *Applied Psychology: An International Review*, *57*, 1-29. <https://doi.org/10.1111/j.1464-0597.2007.00325.x>
- Schwarzer, R., & Hamilton, K. (2020). Changing behavior using the health action process approach. In M. S. Hagger, L. D. Cameron, K. Hamilton, N. Hankonen & T. Lintunen (Eds.), *Handbook of Behavior Change* (pp. 89-103). New York, NY: Cambridge University Press. <https://doi.org/10.1017/97811086773180.007>

- Seaton, M., Marsh, H. W., & Craven, R. G. (2010). Big-fish-little-pond Effect: Generalizability and moderation—Two sides of the same coin. *American Educational Research Journal*, *47*, 390-433. <https://doi.org/10.3102/0002831209350493>
- Sheeran, P., Maki, A., Montanaro, E., Avishai-Yitshak, A., Bryan, A., Klein, W. M. P., . . . Rothman, A. J. (2016). The impact of changing attitudes, norms, and self-efficacy on health-related intentions and behavior: A meta-analysis. *Health Psychology*, *35*, 1178-1188. <https://doi.org/10.1037/hea0000387>
- Sniehotta, F. F. (2009). An experimental test of the Theory of Planned Behavior. *Applied Psychology: Health and Well-Being*, *1*, 257-270. <https://doi.org/10.1111/j.1758-0854.2009.01013.x>
- Sniehotta, F. F., Pesseau, J., & Araújo-Soares, V. (2014). Time to retire the Theory of Planned Behaviour. *Health Psychology Review*, *8*, 1-7. <https://doi.org/10.1080/17437199.2013.869710>
- *Spinks, T., & Hamilton, K. (2016). Investigating mothers' decisions to give their 2-3 year old a nutritionally balanced diet. *Nutrition Education and Behavior*, *48*, 250-257. <https://doi.org/10.1016/j.jneb.2016.02.002>
- Stanley, T. D., & Doucouliagos, H. (2014). Meta-regression approximations to reduce publication selection bias. *Research Synthesis Methods*, *5*, 60-78. <https://doi.org/10.1002/jrsm.1095>
- *Swanson, V., Power, K. G., Crombie, I. K., Irvine, L., Kiezebrink, K., Wrieden, W., & Slane, P. W. (2011). Maternal feeding behaviour and young children's dietary quality: A cross-sectional study of socially disadvantaged mothers of two-year old children using the theory of planned behaviour. *International Journal of Behavioral Nutrition and Physical Activity*, *8*, 65. <https://doi.org/10.1186/1479-5868-8-65>
- *Talsma, E. F., Melse-Boonstra, A., de Kok, B. P. H., Mbera, G. N. K., Mwangi, A. M., & Brouwer, I. D. (2013). Biofortified cassava with pro-vitamin A is sensory and culturally acceptable for consumption by primary school children in Kenya. *PLoS ONE*, *8*, e73433. <https://doi.org/10.1371/journal.pone.0073433>
- *Thomson, C. E., White, K. M., & Hamilton, K. (2012). Investigating mothers' decisions about their child's sun-protective behaviour using the theory of planned behaviour. *Journal of Health Psychology*, *17*, 1001-1010. <https://doi.org/10.1177/1359105311433905>
- *Tickner, S., Leman, P. J., & Woodcock, A. (2010). The immunisation beliefs and intentions measure (IBIM): Predicting parents' intentions to immunise preschool children. *Vaccine*, *28*, 3350-3362. <https://doi.org/10.1016/j.vaccine.2010.02.083>
- van Bree, R. J. H., van Stralen, M. M., Mudde, A. N., Bolman, C., de Vries, H., & Lechner, L. (2015). Habit as mediator of the relationship between prior and later physical activity: A longitudinal study in older adults. *Psychology of Sport and Exercise*, *19*, 95-102. <https://doi.org/10.1016/j.psychsport.2015.03.006>
- *Van den Branden, S., Van den Broucke, S., Leroy, R., Declerck, D., & Hoppenbrouwers, K. (2012). Effects of time and socio-economic status on the determinants of oral health-related behaviours of parents of preschool children. *European Journal of Oral Sciences*, *120*, 153-160. <https://doi.org/10.1111/j.1600-0722.2012.00951.x>
- *Van den Branden, S., Van den Broucke, S., Leroy, R., Declerck, D., & Hoppenbrouwers, K. (2013). Measuring determinants of oral health behaviour in parents of preschool children. *Community Dental Health*, *30*, 19-25. https://doi.org/10.1922/CDH_2897Branden07
- *Van den Branden, S., Van den Broucke, S., Leroy, R., Declerck, D., & Hoppenbrouwers, K. (2015). Predicting oral health-related behaviour in the parents of preschool children: An application of the theory of planned behaviour. *Health Education Journal*, *74*, 221-230. <https://doi.org/10.1177/0017896914530585>
- *van Lier, A., Tostmann, A., Harmsen, I. A., de Melker, H. E., Hautvast, J. L. A., & Ruijs, W. L. M. (2016). Negative attitude and low intention to vaccinate universally against varicella among public health professionals and parents in the Netherlands: Two internet surveys. *BMC Infectious Diseases*, *16*, 127. <https://doi.org/10.1186/s12879-016-1442-1>

- Vo, P. T., & Bogg, T. (2015). Testing theory of planned behavior and neo-socioanalytic theory models of trait activity, industriousness, exercise social cognitions, exercise intentions, and physical activity in a representative U.S. sample. *Frontiers in Psychology, 6*, 1114. <https://doi.org/10.3389/fpsyg.2015.01114>
- *Walsh, A., Edwards, H., & Fraser, J. (2007). Over-the-counter medication use for childhood fever: A cross-sectional study of Australian parents. *Journal of Paediatrics and Child Health, 43*, 601-606. <https://doi.org/10.1111/j.1440-1754.2007.01161.x>
- *Wambach, K. A. (1997). Breastfeeding intention and outcome: A test of the theory of planned behavior. *Research in Nursing & Health, 20*, 51-59. [https://doi.org/10.1002/\(SICI\)1098-240X\(199702\)20:1<51::AID-NUR6>3.0.CO;2-T](https://doi.org/10.1002/(SICI)1098-240X(199702)20:1<51::AID-NUR6>3.0.CO;2-T)
- Wampold, B. E., Mondin, G. W., Moody, M., Stich, F., Benson, K., & Ahn, H.-N. (1997). A meta-analysis of outcome studies comparing bona fide psychotherapies: Empirically, "all must have prizes". *Psychological Bulletin, 122*, 203-215. <https://doi.org/10.1037/0033-2909.122.3.203>
- Warner, L. M., & French, D. P. (2020). Confidence and self-efficacy interventions. In M. S. Hagger, L. D. Cameron, K. Hamilton, N. Hankonen & T. Lintunen (Eds.), *Handbook of Behavior Change* (pp. 461-478). New York, NY: Cambridge University Press. <https://doi.org/10.1017/97811086773180.032>
- Webb, T. L., & Sheeran, P. (2006). Does changing behavioral intentions engender behavior change? A meta-analysis of the experimental evidence. *Psychological Bulletin, 132*, 249-268. <https://doi.org/10.1037/0033-2909.132.2.249>
- WHO. (2013). *Global action plan for the prevention and control of noncommunicable diseases 2013-2020*. Geneva, Switzerland: World Health Organization.
- WHO. (2018). Non-communicable diseases. from <https://www.who.int/news-room/fact-sheets/detail/noncommunicable-diseases>
- Zhang, C. Q., Zhang, R., Schwarzer, R., & Hagger, M. S. (2019). A meta-analysis of the health action process approach. *Health Psychology, 38*, 623-637. <https://doi.org/10.1037/hea0000728>

Table 1

Standardized Path Coefficients for Direct and Indirect Effects for the Meta-Analytic Structural Equation Model (Stage 2) of the Theory of Planned Behavior with Planning Excluding and Including Past Behavior with Model Comparisons

| Effect | Model excluding past behavior | | | Model including past behavior | | | Model comparisons ^a | | |
|-----------------------------|-------------------------------|-----------------------|------|-------------------------------|-----------------------|------|--------------------------------|------------------|------|
| | β | Wald CI ₉₅ | | β | Wald CI ₉₅ | | β_{diff} | CI ₉₅ | |
| | | LL | UL | | LL | UL | | LL | UL |
| Direct effects | | | | | | | | | |
| Intention→Behavior | .329 | .160 | .497 | .240 | .049 | .430 | .089 | -.165 | .343 |
| PBC→Behavior | .150 | .035 | .265 | .094 | -.033 | .221 | .056 | -.115 | .227 |
| Planning→Behavior | .255 | .099 | .411 | .098 | -.147 | .342 | .158 | -.132 | .447 |
| Attitude→Intention | .369 | .260 | .477 | .301 | .175 | .428 | .067 | -.099 | .234 |
| PBC→Intention | .202 | .100 | .304 | .172 | .055 | .288 | .031 | -.124 | .186 |
| SN→Intention | .239 | .127 | .352 | .187 | .055 | .320 | .052 | -.122 | .226 |
| Intention→Planning | .477 | .317 | .637 | .309 | .074 | .544 | .168 | -.116 | .452 |
| PB→Attitude | – | – | – | .344 | .219 | .469 | – | – | – |
| PB→Behavior | – | – | – | .392 | .210 | .573 | – | – | – |
| PB→Intention | – | – | – | .214 | .023 | .404 | – | – | – |
| PB→PBC | – | – | – | .359 | .248 | .471 | – | – | – |
| PB→Planning | – | – | – | .431 | .163 | .699 | – | – | – |
| PB→SN | – | – | – | .393 | .266 | .519 | – | – | – |
| Indirect effects | | | | | | | | | |
| Attitude→Intention→Behavior | .121 | .056 | .186 | .072 | .007 | .137 | .049 | -.043 | .141 |
| SN→Intention→Behavior | .079 | .019 | .139 | .045 | -.009 | .098 | .034 | -.047 | .114 |
| PBC→Intention→Behavior | .066 | .019 | .114 | .041 | -.003 | .086 | .025 | -.040 | .090 |
| Intention→Planning→Behavior | .122 | .043 | .200 | .030 | -.047 | .108 | .092 | -.019 | .202 |
| Correlations | | | | | | | | | |
| Attitude↔PBC | .337 | .275 | .400 | .211 | .124 | .298 | .126 | .019 | .233 |
| SN↔PBC | .326 | .267 | .385 | .180 | .092 | .269 | .145 | .039 | .252 |
| PBC↔Planning | .176 | .020 | .331 | .106 | -.051 | .264 | .070 | -.152 | .291 |
| SN↔Planning | .234 | .048 | .421 | .111 | -.114 | .335 | .124 | -.168 | .416 |
| Attitude↔SN | .423 | .355 | .491 | .286 | .191 | .381 | .136 | .019 | .254 |

Note. β = Standardized path coefficient; Wald CI₉₅ = Wald 95% confidence interval; LL = Lower limit of CI₉₅; UL = Upper limit of CI₉₅; CI₉₅ = Conventional 95% confidence interval; β_{diff} = Difference in standardized path coefficient; SN = Subjective norms; PBC = Perceived behavioral control; PB = Past behavior; ^aModel comparisons made using Schenker and Gentleman's (2001) 'standard method' using confidence intervals about the mean difference; ^bSum of indirect effects of past behavior on behavior; ^cTotal effect of past behavior on behavior.

Table 2

Standardized Path Coefficients for Direct and Indirect Effects for the Meta-Analytic Structural Equation Model (Stage 2) of the Theory of Planned Behavior Excluding and Including Past Behavior with Model Comparisons

| Effect | Model excluding past behavior | | | Model including past behavior | | | Model comparisons ^a | | |
|-----------------------------|-------------------------------|-----------------------|------|-------------------------------|-----------------------|------|--------------------------------|------------------|------|
| | β | Wald CI ₉₅ | | β | Wald CI ₉₅ | | β_{diff} | CI ₉₅ | |
| | | LL | UL | | LL | UL | | LL | UL |
| Direct effects | | | | | | | | | |
| Intention→Behavior | .482 | .370 | .594 | .277 | .117 | .437 | .205 | .010 | .401 |
| PBC→Behavior | .188 | .078 | .298 | .106 | -.023 | .235 | .082 | -.088 | .252 |
| Attitude→Intention | .319 | .211 | .427 | .296 | .171 | .420 | .024 | -.141 | .189 |
| PBC→Intention | .198 | .099 | .298 | .169 | .052 | .285 | .030 | -.124 | .183 |
| SN→Intention | .285 | .184 | .385 | .186 | .052 | .320 | .099 | -.069 | .266 |
| PB→Attitude | – | – | – | .317 | .191 | .442 | – | – | – |
| PB→Behavior | – | – | – | .433 | .292 | .573 | – | – | – |
| PB→Intention | – | – | – | .230 | .042 | .418 | – | – | – |
| PB→PBC | – | – | – | .354 | .242 | .467 | – | – | – |
| PB→SN | – | – | – | .398 | .275 | .520 | – | – | – |
| Indirect effects | | | | | | | | | |
| Attitude→Intention→Behavior | .154 | .095 | .213 | .082 | .023 | .141 | .072 | -.011 | .156 |
| SN→Intention→Behavior | .137 | .079 | .196 | .051 | -.001 | .104 | .086 | .007 | .165 |
| PBC→Intention→Behavior | .096 | .039 | .152 | .047 | .004 | .089 | .049 | -.022 | .119 |
| Correlations | | | | | | | | | |
| Attitude↔PBC | .336 | .274 | .398 | .223 | .137 | .309 | .113 | .007 | .219 |
| SN↔PBC | .328 | .269 | .388 | .181 | .092 | .270 | .147 | .040 | .254 |
| Attitude↔SN | .422 | .353 | .490 | .295 | .200 | .390 | .126 | .009 | .243 |

Note. β = Standardized path coefficient; Wald CI₉₅ = Wald 95% confidence interval; LL = Lower limit of CI₉₅; UL = Upper limit of CI₉₅; CI₉₅ = Conventional 95% confidence interval; β_{diff} = Difference in standardized path coefficient; SN = Subjective norms; PBC = Perceived behavioral control; PB = Past behavior; ^aModel comparisons made using Schenker and Gentleman's (2001) 'standard method' using confidence intervals about the mean difference; ^bSum of indirect effects of past behavior on behavior; ^cTotal effect of past behavior on behavior.

Figure 1. Model of the theory of planned behavior augmented to include planning excluding (upper diagram) and including (lower diagram) past behavior.

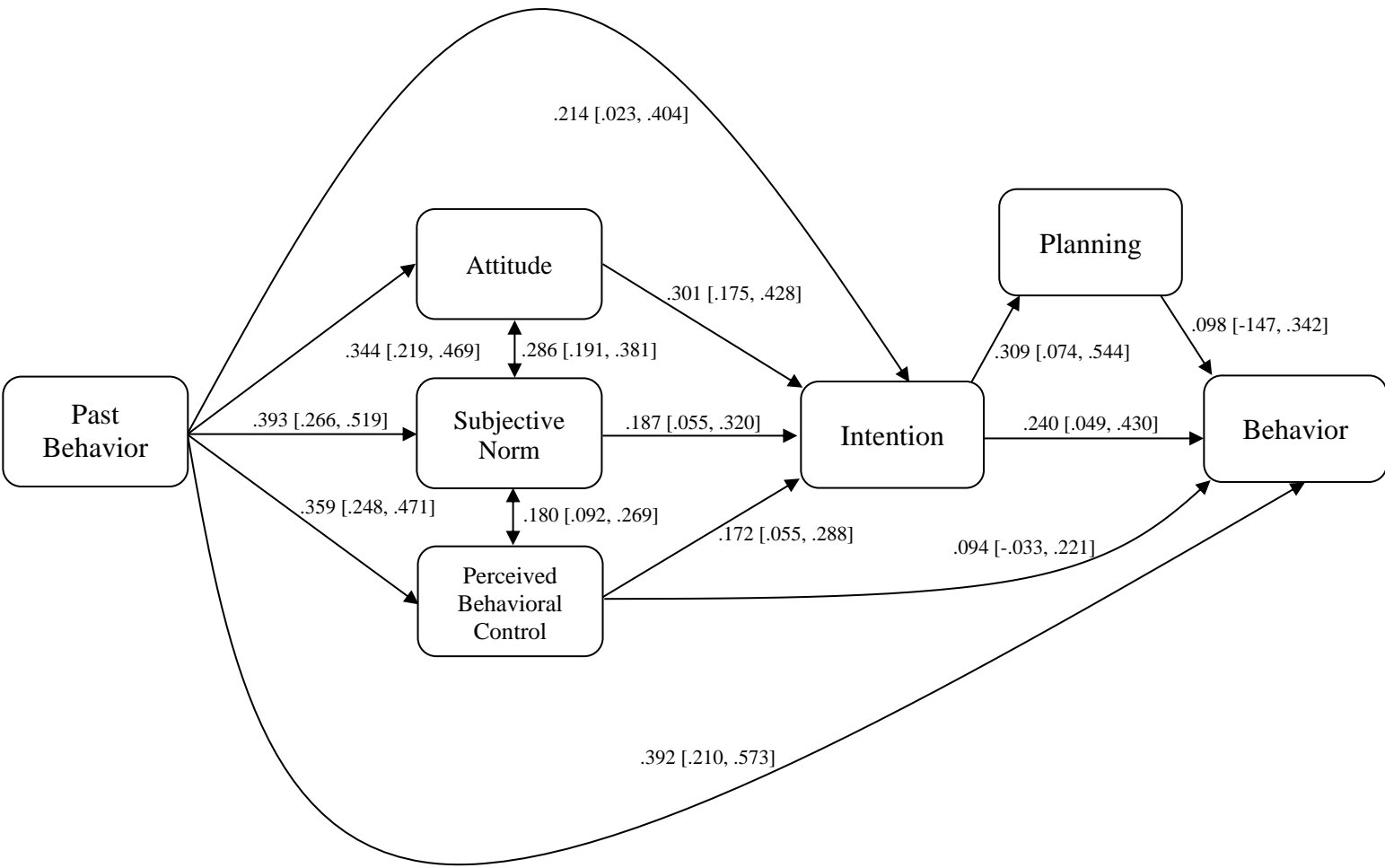
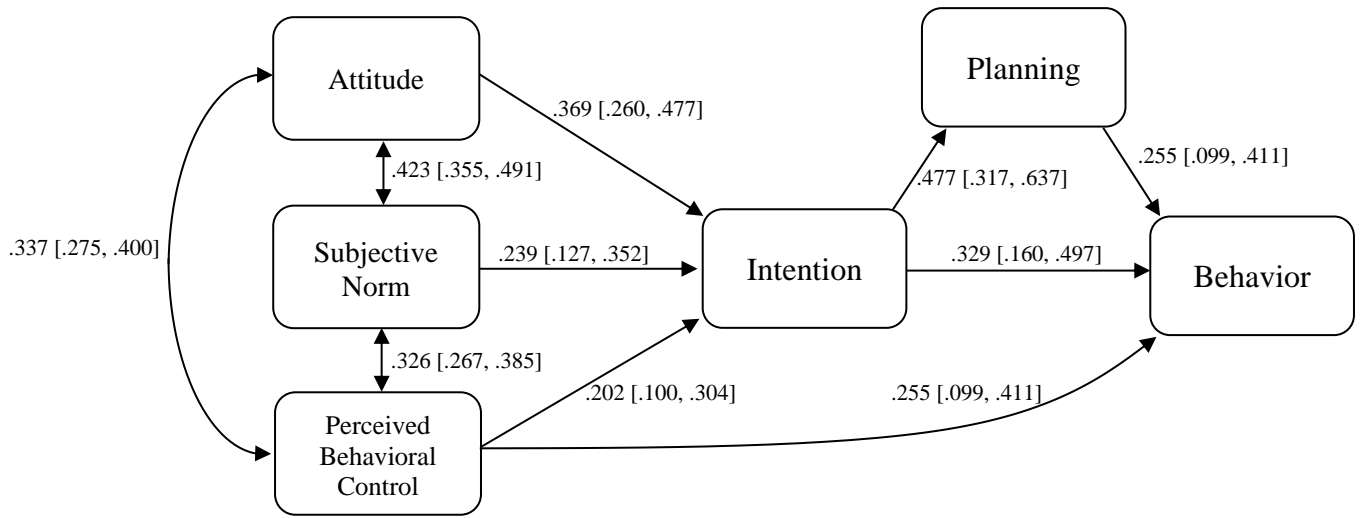
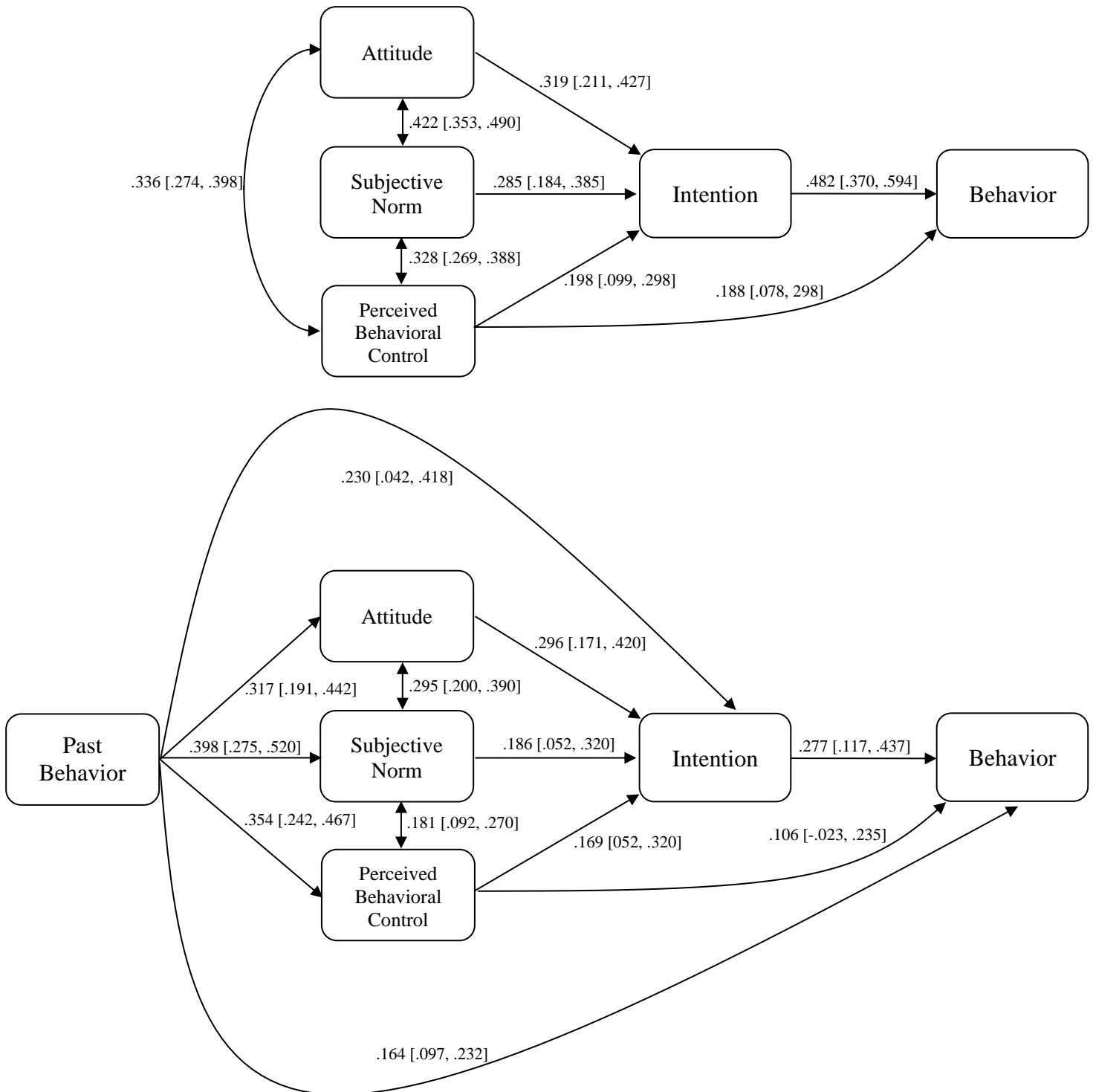
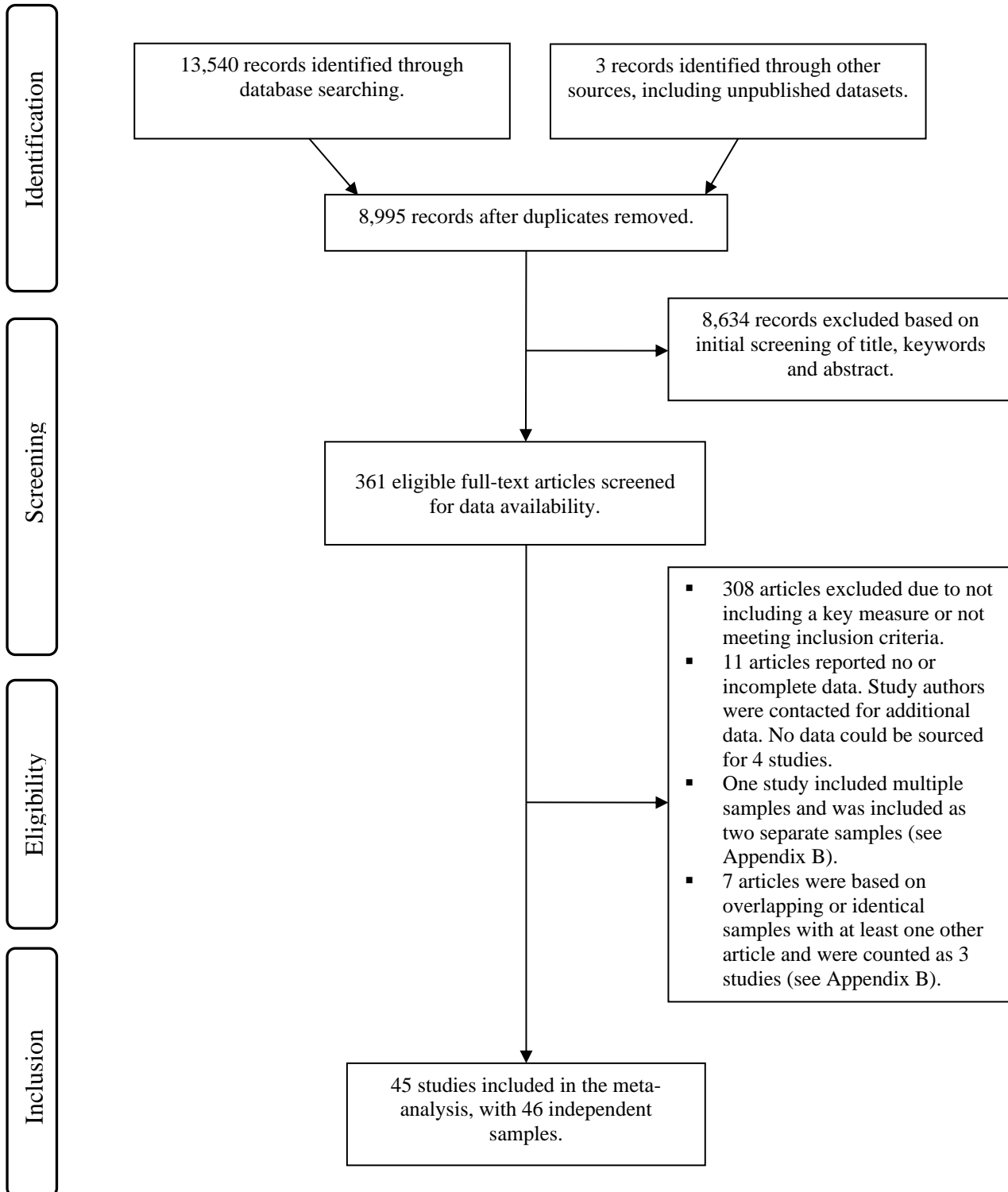


Figure 2. Model of the theory of planned behavior excluding (upper diagram) and including (lower diagram) effects of past behavior.



Appendix A: PRISMA flow diagram for study search and inclusion strategy



Appendix B: Multiple and overlapping studies

Table B1

Studies Included in Meta-Analysis with Multiple Studies/Samples/Behaviors

| Reference | Samples ^a | Behaviors ^b | Treatment ^c |
|--|----------------------|---|-------------------------|
| 1. de Vries et al. (2012) | 2 | 1 (sunscreen use) | Separate effect sizes |
| 2. Hamilton et al. (2013) | 1 | 2 (screen time & PA) | Aggregated ^d |
| 3. Ice et al. (2014) | 1 | 3 (fruit & vegetable intake, moderate PA, vigorous PA) | Aggregated ^d |
| 4. Spinks & Hamilton (2016) | 1 | 2 (Healthy eating; Discretionary choices) | Aggregated ^d |
| 5. Swanson et al. (2011) | 1 | 3 (Eating breakfast; Cooking meals; Sit down meals) | Aggregated ^d |
| 6. Tickner et al. (2010) | 1 | 2 (Receiving MMR vaccine; Receiving the dTaP/IPV vaccine) | Aggregated ^d |
| 7. Van den Branden et al. (2012, 2013, 2015) | 1 | 3 (Visit dentist; Oral hygiene; Diet habits) | Aggregated ^d |

Note. ^aNumber of independent samples reported in study; ^bNumber behavioral outcomes reported within each sample; ^cHow samples were treated in the meta-analysis; ^dEffect sizes aggregated across behaviors within each sample using Hunter and Schmidt's (2004) formula for aggregating dependent correlations with the correlation for the within-study effect sizes set at .50 (Wampold et al., 1997). PA = Physical activity.

References

- de Vries, H., van Osch, L., Eijmael, K., Smerecnik, C., & Candel, M. (2012). The role of risk perception in explaining parental sunscreen use. *Psychology & Health, 27*, 1342-1358. <https://doi.org/10.1080/08870446.2012.684059>
- Hamilton, K., Thomson, C. E., & White, K. M. (2013). Promoting active lifestyles in young children: Investigating mothers' decisions about their child's physical activity and screen time behaviours. *Maternal and Child Health Journal, 17*, 968-976. <https://doi.org/10.1007/s10995-012-1081-0>
- Hunter, J. E., & Schmidt, F. L. (2004). *Methods of meta-analysis: Correcting error and bias in research findings* (2nd ed.). Newbury Park, CA: Sage.
- Ice, C. L., Neal, W. A., & Cottrell, L. (2014). Parental efficacy and role responsibility for assisting in child's healthful behaviors. *Education & Urban Society, 46*, 699-715. <https://doi.org/10.1177/0013124512468004>
- Spinks, T., & Hamilton, K. (2016). Investigating mothers' decisions to give their 2-3 year old a nutritionally balanced diet. *Nutrition Education and Behavior, 48*, 250-257. <https://doi.org/10.1016/j.jneb.2016.02.002>
- Swanson, V., Power, K. G., Crombie, I. K., Irvine, L., Kiezebrink, K., Wrieden, W., & Slane, P. W. (2011). Maternal feeding behaviour and young children's dietary quality: A cross-sectional study of socially disadvantaged mothers of two-year old children using the theory of planned behaviour. *International Journal of Behavioral Nutrition and Physical Activity, 8*, 65. <https://doi.org/10.1186/1479-5868-8-65>
- Tickner, S., Leman, P. J., & Woodcock, A. (2010). The immunisation beliefs and intentions measure (IBIM): Predicting parents' intentions to immunise preschool children. *Vaccine, 28*, 3350-3362. <https://doi.org/10.1016/j.vaccine.2010.02.083>
- Van den Branden, S., Van den Broucke, S., Leroy, R., Declerck, D., & Hoppenbrouwers, K. (2012). Effects of time and socio-economic status on the determinants of oral health-related behaviours

- of parents of preschool children. *European Journal of Oral Sciences*, 120, 153-160.
<https://doi.org/10.1111/j.1600-0722.2012.00951.x>
- Van den Branden, S., Van den Broucke, S., Leroy, R., Declerck, D., & Hoppenbrouwers, K. (2013). Measuring determinants of oral health behaviour in parents of preschool children. *Community Dental Health*, 30, 19-25. https://doi.org/10.1922/CDH_2897Branden07
- Van den Branden, S., Van den Broucke, S., Leroy, R., Declerck, D., & Hoppenbrouwers, K. (2015). Predicting oral health-related behaviour in the parents of preschool children: An application of the theory of planned behaviour. *Health Education Journal*, 74, 221-230.
<https://doi.org/10.1177/0017896914530585>
- Wampold, B. E., Mondin, G. W., Moody, M., Stich, F., Benson, K., & Ahn, H.-N. (1997). A meta-analysis of outcome studies comparing bona fide psychotherapies: Empirically, "all must have prizes." *Psychological Bulletin*, 122, 203-215. <https://doi.org/10.1037/0033-2909.122.3.203>

Table B2

Studies Included in Meta-Analysis with Overlapping Samples

| Studies | Group name ^a |
|--|---|
| 1. Hamilton, K., Kirkpatrick, A., Rebar, A., & Hagger, M. S. (2017). Child sun safety: Application of an integrated behavior change model. <i>Health Psychology, 36</i> , 916-926. doi: 10.1037/hea0000533 | Hamilton et al. (2017a); Hamilton et al. (2017b) |
| 2. Hamilton, K., Kirkpatrick, A., Rebar, A., White, K. M., & Hagger, M. S. (2017). Protecting young children against skin cancer: Parental beliefs, roles, and regret. <i>Psycho-Oncology, 26</i> , 2135–2141. doi: 10.1002/pon.4434 | |
| 3. Johnson, L., Chen, T.-A., Hughes, S. O., & O'Connor, T. M. (2015). The association of parent's outcome expectations for child TV viewing with parenting practices and child TV viewing: An examination using path analysis. <i>International Journal of Behavioral Nutrition and Physical Activity, 12</i> , 70. doi: 10.1186/s12966-015-0232-2 | Johnson, Chen, Hughes, & O'Connor (2015); O'Connor, Chen, del Rio Rodriguez, & Hughes (2014) |
| 4. O'Connor, T. M., Chen, T.-A., del Rio Rodriguez, B., & Hughes, S. O. (2014). Psychometric validity of the parent's outcome expectations for children's television viewing (POETV) scale. <i>BMC Public Health, 14</i> , 894. doi: 10.1186/1471-2458-14-894 | |
| 5. Van den Branden, S., Van den Broucke, S., Leroy, R., Declerck, D., & Hoppenbrouwers, K. (2012). Effects of time and socio-economic status on the determinants of oral health-related behaviours of parents of preschool children. <i>European Journal of Oral Sciences, 120</i> , 153-160. doi: 10.1111/j.1600-0722.2012.00951.x | van den Branden et al. (2012, 2013, 2015) |
| 6. Van den Branden, S., Van den Broucke, S., Leroy, R., Declerck, D., & Hoppenbrouwers, K. (2013). Measuring determinants of oral health behaviour in parents of preschool children. <i>Community Dental Health, 30</i> , 19-25. doi: 10.1922/CDH_2897Branden07 | |
| 7. Van den Branden, S., Van den Broucke, S., Leroy, R., Declerck, D., & Hoppenbrouwers, K. (2015). Predicting oral health-related behaviour in the parents of preschool children: An application of the theory of planned behaviour. <i>Health Education Journal, 74</i> , 221-230. doi: 10.1177/0017896914530585 | |

Note. ^aSummary name used to refer to the group of overlapping studies in the study characteristics table presented in Appendix C.

Table C1
Summary Characteristics and Moderator Coding of Studies Included in Meta-Analysis

| Study | Year | N | Child age ^a | Child gender (% female) | Parent/ caregiver age ^a | Parent/care- giver gender (% female) | Constructs measured | Moderator coding | | | | | | |
|--|------|-----|--|----------------------------|--|--|--|-----------------------|-----------------------------|--------------|--------------------------|----------------------------|-----|-----|
| | | | | | | | | Behavior ^b | Sample type ^d | Child age | Time lag ^e | Study quality ^f | | |
| | | | | | | | | | | | | 65% | 70% | 75% |
| Abhyankar, O'Connor & Lawton | 2008 | 142 | – | – | $M = 35.23, SD = 10.03, \text{range} = 17-66$ | 100 | PB, INT, MSE, AP, CP | PRO | MFC | – | NA | QUE | | |
| Abizari, Pilime, Armar-Klemesu & Brouwer | 2013 | 120 | 6-7 = 34 (28.3%); 8-9 = 42 (35.0%); 10-11 = 41 (34.2%); $\geq 12 = 3$ (2.5%); range = 6-12 | 42.5 | 19-34 = 54 (45.0%); 35-49 = 36 (30.0%); $>49 = 30$ (25.0%) | 87.5 | PB, RP, OE, ASE, INT, AP, CP, MSE, RSE, AC | DIE | PCG | OLD | NA | ACC | | |
| Askelson, Campo, Smith, Lowe, Dennis, & Andsager | 2011 | 217 | $M = 11.21, SD = 1.82; \text{range} = 9-15$ | 100 | NA | 100 | RP, OE, ASE, INT, AP, MSE | PRO | MFC | OLD | NA | ACC | | |
| Åstrøm & Kiwanuka | 2006 | 615 | $M = 4.33; \text{range} = 3-5$ | 48.94 | $M = 32.50; SD = 7.80, \text{range} = 16-72$ | 64 | PB, ASE, INT, MSE, RSE, AP, AC | DIE | PCG | YNG | NA | ACC | | |
| Bai, Dinour, & Pope | 2016 | 218 | – | – | $M = 31.63, SD = 8.67, \text{range} = 42$ | 100 | RP, OE, ASE, INT, AP AC | DIE | MFC | – | NA | ACC | | |
| Bos, Hoogstraten, & Prah-Andersen | 2005 | 157 | – | – | Female $M = 41.6, SD = 6.34$; Male $M = 45.68, SD = 6.23$ | 73.25 | PB, RP, OE, ASE, INT, AP | MSC | PCG | – | NA | QUE | | |
| Bracchitta | 2006 | 151 | Range = 4-8 | 50.3 | $M = 37.9; SD = 5.1, \text{range} = 23-52$ | 83.4 | ASE, INT, MSE, RSE, AP | PRO | MFC | OLD | NA | QUE | | |
| Charron-Prochownik, Becker, Brown, Liang, & Bennett | 1993 | 50 | $M = 7.8, SD = 1.1, \text{range} = 6-9$ | 44 | NA | – | PB, OE, ASE, INT, MSE, AP, CP | PRO | – | OLD | NA | ACC | | |
| de Vries, van Osch, Eijmael, Smerecnik, & Candel Study 1 | 2012 | 391 | $M = 14$ months; $SD = 5.9$ months; range = 0-2 years | – | $M = 33.2; SD = 3.7$ | 92.8 | RP, OE, ASE, INT, MSE, AP, CP | PRO | PCG | YNG | LNG | ACC | | |
| de Vries, van Osch, Eijmael, Smerecnik, & Candel Study 2 | 2012 | 495 | Range = 6-9 | – | $M = 36.4, SD = 5.2$ | 77.1 | PB, RP, OE, ASE, INT, | PRO | PCG | OLD | LNG | ACC | | |

Appendix C: Study Characteristics

| | | | | | | | | | | | | |
|--|------|------|--|-------|---|------|---|-----|-----|-----|-----|-----|
| Fahy & Desmond | 2010 | 72 | Range = 8-16 | 100 | $M = 41.56, SD = 5.82, \text{range} = 29-53$ | 100 | MSE, AP, CP, AC PB, RP, OE, ASE, INT, MSE, RSE, AP, CP | PRO | MFC | OLD | NA | QUE |
| Goodnight et al. | 2014 | 99 | Range = 10-14 | 52.53 | Control $M = 40.71, SD = 8.72$; Intervention $M = 44.16, SD = 13.84$ | 100 | PB, RP, OE, ASE, INT, MSE, RSE, AP | PRO | MFC | OLD | NA | QUE |
| Hamilton, Spinks et al. | 2016 | 207 | Range = 2-5 | – | Mothers $M = 36.43, SD = 5.04$; Fathers $M = 36.33, SD = 6.5$ | 66.7 | RP, OE, ASE, INT, AP | PA | PCG | YNG | SRT | QUE |
| Hamilton et al. (2017a); Hamilton et al. (2017b) | 2017 | 273 | Range = 2-5 | – | T1 $M = 35.09, SD = 5.39$; T2 $M = 34.80, SD = 5.21$ | 87.2 | PB, RP, OE, ASE, INT, MSE, RSE, AP | PRO | PCG | YNG | SRT | ACC |
| Hamilton & Schwarzer | 2018 | 208 | Female = 3.87, $SD = .96$. Male $M = 3.87, SD = 1.02$. Range 2 - 5 | 47.1 | Mother $M = 36.43, SD = 5.04$, Fathers $M = 36.33, SD = 6.5$ | 66.8 | RP, OE, ASE, INT, AP, CP | PA | PCG | YNG | SRT | ACC |
| Hamilton, Cornish, Kirkpatrick, Kroon, & Schwarzer | 2018 | 281 | Range = 2-5 | – | NA | 70.1 | RP, OE, ASE, INT, AP | PRO | PCG | YNG | SRT | ACC |
| Hamilton, Thompson, & White (physical activity) | 2013 | 162 | Range = 4-5 | – | $M = 35.19, SD = 5.39$; range = 17-49 | 100 | PB, OE, ASE, INT, AP | PA | MFC | YNG | SRT | QUE |
| Hamilton, Thompson, & White (screen time) | 2013 | 162 | Range = 4-5 | – | $M = 35.19, SD = 5.39$; range = 17-49 | 100 | PB, OE, ASE, INT, AP | PA | MFC | YNG | SRT | QUE |
| Hamilton, Daniels, White, Murray, & Walsh | 2011 | 375 | $M = 13$ weeks, $SD = 3$ weeks | – | $M = 29.2, SD = 5.5$ | 100 | PB, RP, OE, ASE, INT, AP, AC | DIE | MFC | YNG | LNG | ACC |
| Hatefnia, Alimasab, & Ghorbani | 2017 | 80 | Range = 3-6 | – | 18 - 49 | 100 | PB, RP, OE, ASE, INT, AP, AC | PRO | MFC | YNG | NA | QUE |
| Hofman, Empelen, Richardus, Kok, Koning, Ballegooijen, & Korfage | 2014 | 1725 | Range = 10-11 | 100 | $M = 42.8, SD = 4.17$ | 93.7 | ASE, INT, AP, CP, AC | PRO | PCG | OLD | NA | ACC |
| Hounsa, Godin, Alihonou, Valois, & Girard | 1993 | 128 | >1 year old | – | $M = 29.24, SD = 6.17$ | 100 | PB, RP, ASE, INT, AP, CP | DIE | MFC | YNG | NA | QUE |
| Ice, Neal, & Cottrell (fruit and vegetable intake) | 2014 | 444 | NA | 50.5 | NA | 92 | PB, OE, ASE, INT, AP, CP | DIE | PCG | – | NA | QUE |
| Ice, Neal, & Cottrell (moderate physical activity) | 2014 | 516 | NA | 50.5 | NA | 92 | RP, OE, ASE, INT, MSE, AP, CP | PA | PCG | – | NA | QUE |

Appendix C: Study Characteristics

| | | | | | | | | | | | | 6 |
|--|------|------|--|-------|--|-------|--|-----|-----|-----|-----|-----|
| Ice, Neal, & Cottrell (vigorous physical activity) | 2014 | 516 | NA | 50.5 | NA | 92 | PB, OE, ASE, INT, CP | PA | PCG | – | NA | QUE |
| Janicke & Finney | 2003 | 87 | $M = 6.8, SD = 1.4, \text{Range} = 4-9$ | 40.2 | $M = 38.4, SD = 5.5, \text{Range} = 26 - 50$ | 94.3 | PB, ASE, INT, CP | MSC | PCG | OLD | NA | QUE |
| Johnson, Chen, Hughes, & O'Connor (2015); O'Connor, Chen, del Rio Rodriguez, & Hughes (2014) | 2015 | 311 | $M = 9.14, SD = 2.42; \text{Range} = 6-12$ | 41.81 | $M = 37.54, SD = 8.39$ | 94.21 | PB, ASE, INT, CP | PA | PCG | OLD | NA | ACC |
| Kafulafula, Hutchinson, Gennaro, Guttmacher, & Kunitawa | 2013 | 110 | Infants of breastfeeding age | – | >18 years | 100 | PB, RP, OE, ASE, INT, AP, CP | DIE | MFC | YNG | LNG | ACC |
| Lampard, Jurkowski, & Davison | 2013 | 146 | $M = 3.7, SD = 0.9; \text{range} = 2-6$ | 55.4 | $M = 30.7, SD = 9.5$ | 93.1 | PB, RP, OE, ASE, INT, MSE, RSE, AP, CP | PA | PCG | YNG | NA | ACC |
| Lee & Kam | 2015 | 7620 | Range = 9-18 | – | NA | – | RP, OE, ASE, INT, MSE, AP | PRO | – | OLD | LNG | QUE |
| Lwin & Saw | 2007 | 401 | NA | 50 | – | – | PB, OE, INT, RSE, AP | MSC | PCG | – | NA | QUE |
| Manstead, Pelvin, & Smart | 1984 | 50 | Infants in-utero for at least 28 weeks | – | Range = 16 - 38 | 100 | PB, OE, INT, RSE, AP | DIE | MFC | YNG | LNG | QUE |
| Manstead, Proffitt, & Smart | 1983 | 300 | Infants in-utero for at least 28 weeks | – | $M = 26.3, \text{Range} = 16 - 40$ | 100 | PB, RP, OE, ASE, INT, MSE, RSE, AP | DIE | MFC | YNG | LNG | QUE |
| McDonald, Cunningham, & Slavin | 2015 | 446 | NA | – | 16-25 = 121; 26-55 = 267; > 56 = 55 | 74.66 | PB, RP, ASE, INT, AP | PRO | PCG | – | NA | QUE |
| Norman, Searle, Harrad, & Vedhara | 2003 | 151 | $M = 4.45, \text{Range} = 1-8$ | 48 | NA | 85 | PB, RP, ASE, INT, AP | MSC | PCG | YNG | LNG | QUE |
| Poorolajal, Cheraghi, Hazavehei, Rezapur-Shahkolai | 2013 | 580 | Under 5 years old | 51.72 | NA | 100 | PB, ASE, INT, AP | PRO | MFC | YNG | NA | QUE |
| Rhodes, Berry, Craig, Faulkner, Latimer-Cheung, Spence, & Tremblay | 2013 | 663 | Range = 5 - 11 year olds | – | NA | 100 | OE, ASE, INT, MSE, AP, CP | PA | MFC | OLD | NA | ACC |
| Rhodes, Spence, Berry, Deshpande, Faulkner, Latimer-Cheung, O'Reilly, & Tremblay | 2016 | 1253 | $M = 7.11, SD = 3.96, \text{Range} = 5-12$ | 48.6 | NA | 100 | OE, ASE, INT, MSE, AP, CP | PA | MFC | OLD | LNG | ACC |
| Russell | 1991 | 50 | Range = 1-3 | – | $M = 23, \text{range} = 17-36$ | 100 | PB, ASE, INT, MSE, AP, CP | PRO | MFC | YNG | NA | QUE |
| Schuster, Kubacki, & Rundle-Thiele | 2016 | 512 | Range = 5 - 12 | 48.2 | NA | 87.8 | PB, ASE, INT, MSE, AP, CP | PA | PCG | OLD | NA | QUE |
| Spinks & Hamilton (healthy eating) | 2016 | 197 | Range = 2-3 | – | $M = 34.39, SD = 5.65; \text{range} = 18-46$ | 100 | PB, RP, OE, ASE, INT, MSE, AP | DIE | MFC | YNG | SRT | QUE |
| Spinks & Hamilton (discretionary choices) | 2016 | 197 | Range = 2-3 | – | $M = 34.39, SD = 5.65; \text{range} = 18-46$ | 100 | PB, RP, OE, INT, RSE, AP | DIE | MFC | YNG | SRT | QUE |

Appendix C: Study Characteristics

| | | | | | | | | | | | | 7 |
|--|------|------|--|------|---|-------|--|-----|-----|-----|-----|-----|
| Swanson et al. (eating breakfast) | 2011 | 300 | $M = 30.3$ months, $SD = 3.2$ months, Range 24 - 36 months | 49 | $M = 24.9$, $SD = 3.2$; range = 18-34 | 100 | PB, RP, OE, ASE, INT, AP | DIE | MFC | YNG | NA | QUE |
| Swanson et al. (cooking meals) | 2011 | 300 | $M = 30.3$ months, $SD = 3.2$ months, Range 24 - 36 months | 49 | $M = 24.9$, $SD = 3.2$; range = 18-34 | 100 | RP, OE, ASE, INT, MSE, AP | DIE | MFC | YNG | NA | QUE |
| Swanson et al. (sit-down meals) | 2011 | 300 | $M = 30.3$ months, $SD = 3.2$ months, Range 24 - 36 months | 49 | $M = 24.9$, $SD = 3.2$; range = 18-34 | 100 | PB, INT, RSE, AP | DIE | MFC | YNG | NA | QUE |
| Talsma et al. | 2013 | 140 | Range = 6-12 | – | NA | 96 | PB, RP, OE, ASE, INT, MSE, RSE, AP | DIE | PCG | OLD | NA | QUE |
| Thompson, White, & Hamilton | 2012 | 162 | range = 4-5 | – | $M = 35.19$, $SD = 5.39$; range = 17-49 | 100 | PB, RP, OE, ASE, INT, MSE, RSE, AP | PRO | MFC | YNG | SRT | ACC |
| Tickner, Leman, & Woodcock | 2010 | 147 | $M = 2.71$, $SD = .75$; range = 1-4 | 48.3 | NA | 97.93 | PB, ASE, INT, AP | PRO | PCG | YNG | NA | ACC |
| Tickner, Leman, & Woodcock | 2010 | 108 | $M = 2.72$, $SD = .76$; range = 1-4 | 46.3 | NA | 92.45 | PB, INT, MSE, AP | PRO | PCG | YNG | NA | ACC |
| van den Branden et al. (2012, 2013, 2015) (visit dentist) | 2012 | 1325 | $M = 5.3$ years-old, $SD = .03$ years | 49 | $M = 34.4$, $SD = 4.3$; range = 22-51 | – | PB, INT, RSE, AP | PRO | MFC | YNG | NA | ACC |
| van den Branden et al. (2012, 2013, 2015) (visit dentist) | 2012 | 1325 | $M = 5.3$ years-old, $SD = .03$ years | 49 | $M = 34.4$, $SD = 4.3$; range = 22-51 | – | PB, INT, MSE, AP | PRO | MFC | YNG | NA | ACC |
| van den Branden et al. (2012, 2013, 2015) (oral hygiene) | 2012 | 1325 | $M = 5.3$ years-old, $SD = .03$ years | 49 | $M = 34.4$, $SD = 4.3$; range = 22-51 | – | PB, ASE, INT, RSE, AP | PRO | MFC | YNG | NA | ACC |
| van den Branden et al. (2012, 2013, 2015) (oral hygiene) | 2012 | 1325 | $M = 5.3$ years-old, $SD = .03$ years | 49 | $M = 34.4$, $SD = 4.3$; range = 22-51 | – | PB, RP, OE, ASE, INT, MSE, RSE, AP, CP | PRO | MFC | YNG | NA | ACC |
| van den Branden et al. (2012, 2013, 2015) (diet behaviors) | 2012 | 1325 | $M = 5.3$ years-old, $SD = .03$ years | 49 | $M = 34.4$, $SD = 4.3$; range = 22-51 | – | RP, OE, ASE, INT, MSE, RSE, AP, CP | PRO | MFC | YNG | NA | ACC |
| van Lier, Tostmann, Harmsen, Melker, Hautvast, & Ruijs | 2016 | 491 | range = 0-4 | – | <30 = 94 (19.1%); 30-34 = 189 (38.5%); 35-39 = 148 (30.1%); > 40 = 60 (12.2%) | 81.7 | PB, RP, OE, ASE, INT, MSE, RSE, AP | PRO | PCG | YNG | NA | ACC |

Appendix C: Study Characteristics

| Study | Year | N | Time lag | Behavior type | Sample type | Child age | Quality | Moderator | Sample | Age | Quality | | |
|--------------------------|------|-----|----------------------|---------------|--------------------------------------|-----------|---------|------------------------------------|--------|-----|---------|-----|----------|
| Walsh, Edwards, & Fraser | 2009 | 391 | range = 0.5-5 | – | range = 20-52 | 97.4 | | PB, RP, OE, ASE, INT, MSE, RSE, AP | PRO | PCG | YNG | NA | 8 ACC |
| Wambach | 1997 | 135 | Six weeks postpartum | – | $M = 28.2, SD = 5.1$; range = 16-40 | 100 | | RP, OE, ASE, INT, MSE, RSE, AP | DIE | MFC | YNG | LNG | QUE |

Note. ^aAge expressed in years unless otherwise stated; ^bBehavior type moderator coding; ^cSample type moderator; ^dChild age moderator, samples comprising parents of children with a mean age ≥ 6 years coded as older and samples comprising parent of children with a mean mean age < 6 years coded as younger; ^eTime lag between measures of theory constructs and follow-up measure of behavior moderator – studies with a lag of ≥ 6 weeks coded as long and studies with a lag of < 6 weeks coded as short; ^fStudy quality moderator with cut-off values for ‘high’/‘acceptable’ and ‘low’/‘questionable’ studies on the study quality checklist set at 65%, 70%, and 70%. PRO = Protection/safety behaviors; DIE = Dietary behaviors; PA = Physical activity/energy expenditure behaviors; NA = Data not available or coding not possible; MFC = Mothers and female caregivers only; PCG= Parents and caregivers, both genders; OLD = Sample comprising parents of older children; YNG = Sample comprising parents of younger children; SRT = Studies with a shorter time lag between theory measures and behavioral follow up; LNG = Studies with a longer time lag between theory measures and behavioral follow up; ACC = High (‘acceptable’) quality studies; QUE = Low (‘questionable’) quality studies.

Appendix D: Study Quality Checklist

Quality Assessment Checklist for Survey Studies in Psychology (Q-SSP)

| Study: | | | | | |
|--------------------------|---|-----|----|--------------------|-----|
| Research domain | Quality item | Yes | No | Not stated clearly | N/A |
| Introduction (Rationale) | 1. Was the problem or phenomenon under investigation defined, described, and justified? | | | | |
| Introduction (Rationale) | 2. Was the population under investigation defined, described, and justified? | | | | |
| Introduction (Rationale) | 3. Was there a connection between the hypotheses or aims or research questions, and the background research? | | | | |
| Introduction (Variables) | 4. Were operational definitions of all study variables provided? | | | | |
| Participants (Sampling) | 5. Were participant inclusion criteria stated? | | | | |
| Participants (Sampling) | 6. Was the participant recruitment strategy described? | | | | |
| Participants (Sampling) | 7. Was a justification/ rationale for the sample size provided? | | | | |
| Data (Collection) | 8. Was the attrition rate provided? (applies to cross-sectional and prospective studies) | | | | |
| Data (Analyses) | 9. Was a method of treating attrition provided? (applies to cross-sectional and prospective studies) | | | | |
| Data (Analyses) | 10. Were the data analysis techniques justified (i.e., was the link between hypotheses/ aims / research questions and data analyses explained)? | | | | |
| Data (Measures) | 11. Were the measures provided in the report (or in a supplement) in full? | | | | |
| Data (Measures) | 12. Was evidence provided for the validity of the measures (or instrument) used? | | | | |
| Data (Collection) | 13. Was information provided about the person(s) who collected the data (e.g., training, expertise, other demographic characteristics)? | | | | |
| Data (Collection) | 14. Was information provided about the context (e.g., place) of data collection? | | | | |
| Data (Collection) | 15. Was information provided about the duration (or start and end date) of data collection? | | | | |
| Data (Results) | 16. Was the study sample described in terms of key demographic characteristics? | | | | |
| Data (Discussion) | 17. Was discussion of findings confined to the population from which the sample was drawn? | | | | |
| Ethics | 18. Were participants asked to provide (informed) consent or assent? | | | | |

| | | | | | |
|--------|--|--|--|--|--|
| Ethics | 19. Were participants debriefed at the end of data collection? | | | | |
| Ethics | 20. Were funding sources or conflicts of interest disclosed? | | | | |

Appendix E: Zero-Order Correlations and Bias Statistics

Table E1

Zero-Order Parameter Estimates from Meta-Analytic Structural Equation Modeling (Stage 1) for Relations Among Constructs from the Augmented Theory of Planned Behavior for Models Excluding and Including Past Behavior with Heterogeneity and Bias Statistics With Planning Only

| Effect | <i>k</i> | Model excluding past behavior ^a | | | | | | Model including past behavior ^b | | | | | |
|----------|----------|--|------|------------------|------|-----------------------|----------|--|------|------------------|------|-----------------------|----------|
| | | <i>r</i> ⁺ | SE | CI ₉₅ | | <i>I</i> ² | τ^2 | <i>r</i> ⁺ | SE | CI ₉₅ | | <i>I</i> ² | τ^2 |
| | | | | LL | UL | | | | | LL | UL | | |
| Int-Att | 31 | .504 | .043 | .420 | .588 | 96.28 | .053 | .504 | .043 | .420 | .588 | 96.26 | .053 |
| Int-SN | 30 | .441 | .039 | .364 | .518 | 95.13 | .042 | .441 | .039 | .364 | .518 | 95.09 | .041 |
| Int-PBC | 30 | .412 | .040 | .334 | .491 | 95.2 | .043 | .412 | .040 | .334 | .491 | 95.17 | .043 |
| Int-Plan | 4 | .517 | .077 | .366 | .668 | 89.12 | .019 | .515 | .076 | .367 | .664 | 88.71 | .018 |
| Int-Beh | 15 | .491 | .053 | .388 | .594 | 94.16 | .036 | .490 | .052 | .388 | .593 | 94.09 | .036 |
| Int-PB | 15 | — | — | — | — | — | — | .494 | .075 | .347 | .641 | 97.25 | .080 |
| Att-SN | 28 | .422 | .035 | .354 | .490 | 94.02 | .030 | .422 | .035 | .354 | .490 | 94.00 | .030 |
| Att-PBC | 28 | .335 | .032 | .273 | .398 | 91.89 | .024 | .335 | .032 | .273 | .398 | 91.86 | .024 |
| Att-Plan | 3 | .397 | .077 | .245 | .549 | 84.57 | .013 | .395 | .077 | .245 | .546 | 84.16 | .012 |
| Att-Beh | 18 | .311 | .044 | .224 | .397 | 93.32 | .031 | .310 | .044 | .224 | .397 | 93.27 | .030 |
| Att-PB | 11 | — | — | — | — | — | — | .319 | .076 | .171 | .467 | 96.23 | .058 |
| SN-PBC | 26 | .319 | .030 | .259 | .378 | 90.12 | .020 | .319 | .030 | .259 | .378 | 9.06 | .020 |
| SN-Plan | 4 | .413 | .083 | .251 | .575 | 90.6 | .022 | .412 | .082 | .251 | .573 | 9.43 | .022 |
| SN-Beh | 14 | .395 | .042 | .313 | .476 | 88.97 | .018 | .394 | .041 | .313 | .475 | 88.81 | .018 |
| SN-PB | 9 | — | — | — | — | — | — | .311 | .075 | .165 | .457 | 95.25 | .046 |
| PBC-Plan | 5 | .399 | .064 | .273 | .524 | 87.28 | .016 | .398 | .064 | .273 | .523 | 87.08 | .015 |
| PBC-Beh | 19 | .368 | .038 | .293 | .443 | 91.21 | .023 | .367 | .038 | .292 | .442 | 91.16 | .023 |
| PBC-PB | 14 | — | — | — | — | — | — | .362 | .057 | .251 | .473 | 94.59 | .040 |
| Plan-Beh | 5 | .479 | .044 | .393 | .566 | 68.06 | .005 | .479 | .044 | .393 | .564 | 67.30 | .005 |
| Plan-PB | 4 | — | — | — | — | — | — | .570 | .103 | .369 | .771 | 94.18 | .037 |
| Beh-PB | 8 | — | — | — | — | — | — | .578 | .049 | .482 | .674 | 86.71 | .015 |

Note. ^aCochran's *Q* statistic for overall heterogeneity in the model was 2721.676 (df = 245, *p* < .001);

^bCochran's *Q* statistic for overall heterogeneity in the model was 3325.055 (df = 300, *p* < .001). *r*⁺ = Corrected effect size estimate from random effects meta-analytic structural equation modeling analysis; SE = Standard error; CI₉₅ = 95% confidence interval; LL = Lower limit of CI₉₅; UL = Upper limit of CI₉₅; *I*² = Higgins and Thompson's (2002) *I*² statistic for parameter estimate; τ^2 = Estimated variance in population; Int = Intention; Att = Attitude; SN = Subjective norm; PBC = Perceived behavioral control; Plan = Planning; Beh = Behavior; PB = Past behavior.

Table E2

Zero-Order Parameter Estimates from Meta-Analytic Structural Equation Modeling (Stage 1) for Relations Among Constructs from the Theory of Planned Behavior for Models Excluding and Including Past Behavior with Heterogeneity and Bias Statistics Without Planning

| Effect | <i>k</i> | Model excluding past behavior ^a | | | | | | Model including past behavior ^b | | | | | |
|---------|----------|--|------|------------------|------|-----------------------|----------|--|------|------------------|------|-----------------------|----------|
| | | <i>r</i> ⁺ | SE | CI ₉₅ | | <i>I</i> ² | τ^2 | <i>r</i> ⁺ | SE | CI ₉₅ | | <i>I</i> ² | τ^2 |
| | | | | LL | UL | | | | | LL | UL | | |
| Int-Att | 31 | .504 | .043 | .420 | .588 | 96.28 | .053 | .504 | .043 | .420 | .588 | 96.26 | .053 |
| Int-SN | 30 | .441 | .039 | .364 | .519 | 95.14 | .042 | .441 | .039 | .364 | .518 | 95.10 | .041 |
| Int-PBC | 30 | .413 | .040 | .334 | .491 | 95.20 | .043 | .412 | .040 | .334 | .491 | 95.18 | .043 |
| Int-Beh | 15 | .491 | .053 | .388 | .594 | 94.18 | .036 | .490 | .052 | .388 | .593 | 94.11 | .036 |
| Int-PB | 15 | – | – | – | – | – | – | .495 | .075 | .347 | .642 | 97.26 | .080 |
| Att-SN | 28 | .422 | .035 | .354 | .490 | 94.03 | .030 | .422 | .035 | .354 | .490 | 94.00 | .030 |
| Att-PBC | 28 | .335 | .032 | .273 | .398 | 91.89 | .024 | .335 | .032 | .273 | .398 | 91.86 | .024 |
| Att-Beh | 18 | .311 | .044 | .224 | .397 | 93.33 | .031 | .310 | .044 | .224 | .397 | 93.28 | .030 |
| Att-PB | 11 | – | – | – | – | – | – | .319 | .076 | .171 | .468 | 96.24 | .059 |
| SN-PBC | 26 | .319 | .030 | .259 | .378 | 9.14 | .020 | .319 | .030 | .259 | .378 | 9.07 | .020 |
| SN-Beh | 14 | .395 | .042 | .313 | .476 | 89.03 | .019 | .394 | .041 | .313 | .475 | 88.87 | .018 |
| SN-PB | 9 | – | – | – | – | – | – | .311 | .075 | .164 | .457 | 95.27 | .046 |
| PBC-Beh | 19 | .368 | .038 | .293 | .443 | 91.23 | .023 | .367 | .038 | .292 | .442 | 91.18 | .023 |
| PBC-PB | 14 | – | – | – | – | – | – | .362 | .057 | .251 | .473 | 94.61 | .040 |
| Beh-PB | 8 | – | – | – | – | – | – | .578 | .049 | .482 | .675 | 86.76 | .015 |

Note. ^aCochran's *Q* statistic for overall heterogeneity in the model was 2650.541 (df = 229, *p* < .001);

^bCochran's *Q* statistic for overall heterogeneity in the model was 3225.264 (df = 281, *p* < .001). *r*⁺ = Corrected effect size estimate from random effects meta-analytic structural equation modeling analysis; SE = Standard error; CI₉₅ = 95% confidence interval; LL = Lower limit of CI₉₅; UL = Upper limit of CI₉₅; *I*² = Higgins and Thompson's (2002) *I*² statistic for parameter estimate; τ^2 = Estimated variance in population; Int = Intention; Att = Attitude; SN = Subjective norm; PBC = Perceived behavioral control; Beh = Behavior; PB = Past behavior.

References

Higgins, J. P. T., & Thompson, S. G. (2002). Quantifying heterogeneity in a meta-analysis. *Statistics in Medicine*, 21, 1539-1558. doi: 10.1002/sim.1186

Appendix F: Conventional Meta-Analysis and Bias Statistics

Table F1

Zero-Order Parameter Estimates from Conventional Fixed and Random Effects Model Meta-Analysis for Relations Among Constructs from the Augmented Theory of Planned Behavior with Heterogeneity and Bias Statistics

| Effect | Meta-analytic models | | | | | | | | | Bias statistics | | | |
|-----------------------|----------------------|------------|------|------------------|-------|----------|---------------|---------|------|-----------------|---------------|-----------|-------|
| | Random effects | | | | | | Fixed effects | | Q | r^+_{PET} | r^+_{PEESE} | p -BIAS | |
| | k | r^+_{RE} | SE | CI ₉₅ | I^2 | τ^2 | r^+_{FE} | SE | | | | | |
| | | | LL | UL | | | | | | | | | |
| Int-Att | 31 | .514*** | .046 | .424 | .603 | 98.677 | .062 | .636*** | .010 | 1607.326*** | .715*** | .645*** | <.001 |
| Int-SN | 30 | .450*** | .043 | .367 | .534 | 97.350 | .051 | .519*** | .010 | 730.107*** | .511*** | .518*** | <.001 |
| Int-PBC | 30 | .420*** | .043 | .335 | .505 | 96.898 | .053 | .482*** | .011 | 691.589*** | .530*** | .489*** | <.001 |
| Int-Plan ^a | 4 | .537*** | .101 | .339 | .735 | 94.992 | .039 | .565*** | .034 | 52.430*** | — | — | — |
| Int-Beh | 15 | .506*** | .059 | .389 | .622 | 97.272 | .050 | .588*** | .015 | 275.955*** | .580*** | .577*** | <.001 |
| Int-PB | 15 | .503*** | .081 | .345 | .661 | 98.828 | .096 | .530*** | .015 | 640.729*** | -.138* | .232*** | <.001 |
| Att-SN | 28 | .432*** | .037 | .359 | .504 | 96.640 | .035 | .469*** | .008 | 600.295*** | .468*** | .463*** | <.001 |
| Att-PBC | 28 | .345*** | .035 | .277 | .414 | 94.723 | .030 | .309*** | .008 | 367.798*** | .256*** | .276*** | <.001 |
| Att-Plan ^a | 3 | .422*** | .114 | .199 | .645 | 91.567 | .036 | .413*** | .041 | 23.464*** | — | — | — |
| Att-Beh | 18 | .322*** | .050 | .224 | .420 | 99.514 | .042 | .275*** | .009 | 272.163*** | .218*** | .249*** | <.001 |
| Att-PB | 11 | .329*** | .086 | .160 | .499 | 97.321 | .079 | .303*** | .017 | 250.807*** | -.067 | .132*** | .246 |
| SN-PBC | 26 | .329*** | .034 | .263 | .394 | 93.583 | .026 | .278*** | .008 | 275.446*** | .211*** | .241*** | <.001 |
| SN-Plan ^a | 4 | .428*** | .110 | .214 | .643 | 93.725 | .045 | .428*** | .036 | 44.987*** | — | — | — |
| SN-Beh | 14 | .416*** | .048 | .322 | .509 | 90.531 | .028 | .421*** | .018 | 105.419*** | .235*** | .362*** | <.001 |
| SN-PB | 9 | .320*** | .087 | .150 | .491 | 96.606 | .065 | .282*** | .019 | 179.563*** | -.281*** | .026 | .104 |
| PBC-Plan | 5 | .411*** | .079 | .256 | .565 | 90.248 | .028 | .426*** | .031 | 39.391*** | -.227 | .089 | .370 |
| PBC-Beh | 19 | .375*** | .040 | .296 | .454 | 94.565 | .027 | .246*** | .008 | 426.712*** | .115*** | .192*** | <.001 |
| PBC-PB | 14 | .370*** | .062 | .249 | .490 | 95.549 | .049 | .375*** | .016 | 223.268*** | .206*** | .331*** | <.001 |
| Plan-Beh | 5 | .493*** | .056 | .383 | .603 | 83.610 | .013 | .526*** | .031 | 22.679*** | -.105 | .204 | .678 |
| Plan-PB ^a | 4 | .585*** | .123 | .344 | .827 | 97.637 | .059 | .642*** | .034 | 97.419*** | — | — | — |
| Beh-PB | 8 | .593*** | .051 | .492 | .693 | 92.744 | .019 | .653*** | .021 | 87.893*** | .170 | .408*** | .101 |

Note. ^aBias statistics for effects based on small numbers of studies are unlikely to provide reliable estimates, so these statistics have not been computed for effect based on fewer than 5 studies; ^bOnly one study tested relations between planning and role construction, so the individual study effect size and variability statistics are reported. r^+_{RE} = Corrected effect size estimate from conventional random effects meta-analysis model; r^+_{FE} = Corrected effect size estimate from conventional fixed effects meta-analysis model; SE = Standard error; CI₉₅ = 95% confidence interval; LL = Lower limit of CI₉₅; UL = Upper limit of CI₉₅; I^2 = Higgins and Thompson's (2002) I^2 statistic for parameter estimate; τ^2 = Estimated variance in population; Q = Cochran's Q statistic from conventional analyses; r^+_{PET} = Effect size estimate corrected for bias using the

precision-effect estimate; r^+_{PET} = Effect size estimate corrected for bias using the precision-effect estimate with standard errors; p_{BIAS} = Probability value for the precision estimate using the PET-PEESE procedure; Int = Intention; Att = Attitude; SN = Subjective norm; PBC = Perceived behavioral control; Plan = Planning; Beh = Behavior; PB = Past behavior.

* $p < .05$ ** $p < .01$ *** $p < .001$

References

Higgins, J. P. T., & Thompson, S. G. (2002). Quantifying heterogeneity in a meta-analysis. *Statistics in Medicine*, *21*, 1539-1558. doi: 10.1002/sim.1186

Appendix G: Model Fit Indexes

Table G1

Fit Indexes for Meta-Analytic Structural Equation Models

| Model | N | χ^2 | df | p | CFI | TLI | SRMR | RMSEA | RMSEA CI ₉₅ | |
|---|-------|----------|----|------|-------|-------|------|-------|------------------------|------|
| | | | | | | | | | LL | UL |
| TPB with planning including past behavior | 22607 | 5.832 | 3 | .120 | 0.998 | 0.986 | .033 | .007 | .000 | .014 |
| TPB with planning excluding past behavior | 22607 | 10.157 | 3 | .017 | 0.994 | 0.969 | .049 | .010 | .004 | .018 |
| TPB including past behavior | 22607 | 4.506 | 2 | .105 | 0.997 | 0.984 | .031 | .007 | .000 | .017 |
| TPB excluding past behavior | 22607 | 9.001 | 2 | .011 | 0.993 | 0.963 | .041 | .012 | .005 | .021 |
| Moderator: Child age | | | | | | | | | | |
| Older (6 years and older) | 13515 | 5.376 | 2 | .068 | 0.995 | 0.976 | .075 | .011 | .000 | .023 |
| Younger (younger than 6 years) | 7236 | 5.406 | 2 | .067 | 0.995 | 0.974 | .036 | .015 | .000 | .032 |
| Moderator: Time lag | | | | | | | | | | |
| Proximal | 1490 | 3.318 | 2 | .190 | 0.999 | 0.996 | .013 | .021 | .000 | .060 |
| Distal | 10880 | 2.776 | 2 | .250 | 0.997 | 0.986 | .040 | .006 | .000 | .021 |
| Moderator: Sample type | | | | | | | | | | |
| Mothers/Female caregivers | 6769 | 3.500 | 2 | .174 | 0.998 | 0.990 | .035 | .011 | .000 | .029 |
| Parents/caregivers | 8168 | 7.547 | 2 | .023 | 0.987 | 0.932 | .044 | .018 | .006 | .033 |
| Moderator: Behavior | | | | | | | | | | |
| Dietary behaviors | 2688 | 2.897 | 2 | .235 | 0.996 | 0.979 | .049 | .013 | .000 | .043 |
| Physical activity/energy expenditure | 3462 | 1.136 | 2 | .567 | 1.000 | 1.006 | .047 | .000 | .000 | .029 |
| Protection/safety behaviors | 15169 | 5.716 | 2 | .057 | 0.995 | 0.976 | .046 | .011 | .000 | .022 |
| Moderator: Study quality | | | | | | | | | | |
| High ('acceptable') quality | 2688 | 2.897 | 2 | .235 | 0.995 | 0.979 | .049 | .013 | .000 | .043 |
| Low ('questionable') quality | 12409 | 2.794 | 2 | .247 | 0.998 | 0.991 | .035 | .006 | .000 | .020 |

Note. N = Total sample size across studies contributing to model; χ^2 = Model goodness-of-fit chi-square relative to independence (totally free) model; df = Degrees of freedom associated with model goodness-of-fit chi-square; p = Probability value for the model goodness-of-fit chi-square; CFI = Comparative fit index; TLI = Tucker-Lewis Index; SRMR = Standardized root mean square residual; RMSEA = Root mean square error of approximation; RMSEA CI₉₅ = 95% confidence intervals of RMSEA; LL = Lower limit of the RMSEA 95% confidence interval; UL = Upper limit of the RMSEA 95% confidence interval.

Appendix H: Model Parameter Estimates

Table H1

Standardized Path Coefficients for Direct and Indirect Effects for the Meta-Analytic Structural Equation Model (Stage 2) of the Theory of Planned Behavior Excluding and Including Past Behavior with Model Comparisons with Planning

| Effect | Model excluding past behavior | | | Model including past behavior | | | Model comparisons ^a | | |
|--------------------------------|-------------------------------|-----------------------|------|-------------------------------|-----------------------|------|--------------------------------|------------------|------|
| | β | Wald CI ₉₅ | | β | Wald CI ₉₅ | | β_{diff} | CI ₉₅ | |
| | | LL | UL | | LL | UL | | LL | UL |
| Direct effects | | | | | | | | | |
| Intention→Behavior | .329 | .160 | .497 | .240 | .049 | .430 | .089 | -.165 | .343 |
| PBC→Behavior | .150 | .035 | .265 | .094 | -.033 | .221 | .056 | -.115 | .227 |
| Planning→Behavior | .255 | .099 | .411 | .098 | -.147 | .342 | .158 | -.132 | .447 |
| Attitude→Intention | .369 | .260 | .477 | .301 | .175 | .428 | .067 | -.099 | .234 |
| PBC→Intention | .202 | .100 | .304 | .172 | .055 | .288 | .031 | -.124 | .186 |
| SN→Intention | .239 | .127 | .352 | .187 | .055 | .320 | .052 | -.122 | .226 |
| Intention→Planning | .477 | .317 | .637 | .309 | .074 | .544 | .168 | -.116 | .452 |
| PB→Attitude | – | – | – | .344 | .219 | .469 | – | – | – |
| PB→Behavior | – | – | – | .392 | .210 | .573 | – | – | – |
| PB→Intention | – | – | – | .214 | .023 | .404 | – | – | – |
| PB→PBC | – | – | – | .359 | .248 | .471 | – | – | – |
| PB→Planning | – | – | – | .431 | .163 | .699 | – | – | – |
| PB→SN | – | – | – | .393 | .266 | .519 | – | – | – |
| Indirect effects | | | | | | | | | |
| Attitude→Intention→Behavior | .121 | .056 | .186 | .072 | .007 | .137 | .049 | -.043 | .141 |
| SN→Intention→Behavior | .079 | .019 | .139 | .045 | -.009 | .098 | .034 | -.047 | .114 |
| PBC→Intention→Behavior | .066 | .019 | .114 | .041 | -.003 | .086 | .025 | -.040 | .090 |
| Intention→Planning→Behavior | .122 | .043 | .200 | .030 | -.047 | .108 | .092 | -.019 | .202 |
| PB→Attitude→Intention→Behavior | – | – | – | .025 | .004 | .046 | – | – | – |
| PB→SN→Intention→Behavior | – | – | – | .018 | -.003 | .038 | – | – | – |
| PB→PBC→Intention→Behavior | – | – | – | .015 | -.002 | .031 | – | – | – |
| PB→Intention→Planning→Behavior | – | – | – | .006 | -.012 | .025 | – | – | – |
| PB→Intention→Behavior | – | – | – | .051 | .002 | .101 | – | – | – |

| | | | | | | | | | |
|--------------------------|------|------|------|------|-------|------|------|-------|------|
| PB→Planning→Behavior | — | — | — | .042 | -.054 | .138 | — | — | — |
| PB→PBC→Behavior | — | — | — | .034 | -.008 | .076 | — | — | — |
| PB→Behavior ^b | — | — | — | .191 | .093 | .288 | — | — | — |
| Total effects | | | | | | | | | |
| PB→Behavior ^c | — | — | — | .582 | .479 | .685 | — | — | — |
| Correlations | | | | | | | | | |
| Attitude↔PBC | .337 | .275 | .400 | .211 | .124 | .298 | .126 | .019 | .233 |
| SN↔PBC | .326 | .267 | .385 | .180 | .092 | .269 | .145 | .039 | .252 |
| PBC↔Planning | .176 | .020 | .331 | .106 | -.051 | .264 | .070 | -.152 | .291 |
| SN↔Planning | .234 | .048 | .421 | .111 | -.114 | .335 | .124 | -.168 | .416 |
| Attitude↔SN | .423 | .355 | .491 | .286 | .191 | .381 | .136 | .019 | .254 |

Note. β = Standardized path coefficient; Wald CI₉₅ = Wald 95% confidence interval; LL = Lower limit of CI₉₅; UL = Upper limit of CI₉₅; CI₉₅ = Conventional 95% confidence interval; β_{diff} = Difference in standardized path coefficient; SN = Subjective norms; PBC = Perceived behavioral control; PB = Past behavior; ^aModel comparisons made using Schenker and Gentleman's (2001) 'standard method' using confidence intervals about the mean difference; ^bSum of indirect effects of past behavior on behavior; ^cTotal effect of past behavior on behavior.

Table H2

Standardized Path Coefficients for Direct and Indirect Effects for the Meta-Analytic Structural Equation Model (Stage 2) of the Theory of Planned Behavior Excluding and Including Past Behavior with Model Comparisons and Without Planning

| Effect | Model excluding past behavior | | | Model including past behavior | | | Model comparisons ^a | | |
|--------------------------------|-------------------------------|-----------------------|------|-------------------------------|-----------------------|------|--------------------------------|------------------|------|
| | β | Wald CI ₉₅ | | β | Wald CI ₉₅ | | β_{diff} | CI ₉₅ | |
| | | LL | UL | | LL | UL | | LL | UL |
| Direct effects | | | | | | | | | |
| Intention→Behavior | .482 | .370 | .594 | .277 | .117 | .437 | .205 | .010 | .401 |
| PBC→Behavior | .188 | .078 | .298 | .106 | -.023 | .235 | .082 | -.088 | .252 |
| Attitude→Intention | .319 | .211 | .427 | .296 | .171 | .420 | .024 | -.141 | .189 |
| PBC→Intention | .198 | .099 | .298 | .169 | .052 | .285 | .030 | -.124 | .183 |
| SN→Intention | .285 | .184 | .385 | .186 | .052 | .320 | .099 | -.069 | .266 |
| PB→Attitude | – | – | – | .317 | .191 | .442 | – | – | – |
| PB→Behavior | – | – | – | .433 | .292 | .573 | – | – | – |
| PB→Intention | – | – | – | .230 | .042 | .418 | – | – | – |
| PB→PBC | – | – | – | .354 | .242 | .467 | – | – | – |
| PB→SN | – | – | – | .398 | .275 | .520 | – | – | – |
| Indirect effects | | | | | | | | | |
| Attitude→Intention→Behavior | .154 | .095 | .213 | .082 | .023 | .141 | .072 | -.011 | .156 |
| SN→Intention→Behavior | .137 | .079 | .196 | .051 | -.001 | .104 | .086 | .007 | .165 |
| PBC→Intention→Behavior | .096 | .039 | .152 | .047 | .004 | .089 | .049 | -.022 | .119 |
| PB→Attitude→Intention→Behavior | – | – | – | .026 | .008 | .043 | – | – | – |
| PB→SN→Intention→Behavior | – | – | – | .020 | .001 | .040 | – | – | – |
| PB→PBC→Intention→Behavior | – | – | – | .017 | .001 | .032 | – | – | – |
| PB→Intention→Behavior | – | – | – | .064 | .010 | .118 | – | – | – |
| PB→PBC→Behavior | – | – | – | .038 | -.004 | .079 | – | – | – |
| PB→Behavior ^b | – | – | – | .164 | .097 | .232 | – | – | – |
| Total effects | | | | | | | | | |
| PB→Behavior ^c | – | – | – | .597 | .502 | .691 | – | – | – |

Correlations

| | | | | | | | | | |
|--------------|------|------|------|------|------|------|------|------|------|
| Attitude↔PBC | .336 | .274 | .398 | .223 | .137 | .309 | .113 | .007 | .219 |
| SN↔PBC | .328 | .269 | .388 | .181 | .092 | .270 | .147 | .040 | .254 |
| Attitude↔SN | .422 | .353 | .490 | .295 | .200 | .390 | .126 | .009 | .243 |

Note. β = Standardized path coefficient; Wald CI₉₅ = Wald 95% confidence interval; LL = Lower limit of CI₉₅; UL = Upper limit of CI₉₅; CI₉₅ = Conventional 95% confidence interval; β_{diff} = Difference in standardized path coefficient; SN = Subjective norms; PBC = Perceived behavioral control; PB = Past behavior; ^aModel comparisons made using Schenker and Gentleman's (2001) 'standard method' using confidence intervals about the mean difference; ^bSum of indirect effects of past behavior on behavior; ^cTotal effect of past behavior on behavior.

Table H3

Standardized Path Coefficients for Direct and Indirect Effects for the Meta-Analytic Structural Equation Model (Stage 2) of the Theory of Planned Behavior for the Child Age Moderator Analysis with Model Comparisons

| Effect | Studies on younger children (≤ 6 years old) | | | Studies on older children (> 6 years old) | | | Model comparisons ^a | | |
|-----------------------------|---|-----------------------|------|--|-----------------------|------|--------------------------------|------------------|------|
| | β | Wald CI ₉₅ | | β | Wald CI ₉₅ | | β_{diff} | CI ₉₅ | |
| | | LL | UL | | LL | UL | | LL | UL |
| Direct effects | | | | | | | | | |
| Intention→Behavior | .463 | .382 | .544 | .484 | .355 | .613 | -.021 | -.174 | .131 |
| PBC→Behavior | .185 | .015 | .354 | .178 | .038 | .318 | .006 | -.214 | .226 |
| Attitude→Intention | .238 | .019 | .456 | .359 | .220 | .499 | -.122 | -.381 | .137 |
| PBC→Intention | .217 | .055 | .379 | .208 | .063 | .353 | .009 | -.209 | .226 |
| SN→Intention | .280 | .030 | .530 | .288 | .168 | .408 | -.009 | -.286 | .269 |
| Indirect effects | | | | | | | | | |
| Attitude→Intention→Behavior | .110 | .008 | .212 | .174 | .097 | .251 | -.064 | -.192 | .064 |
| SN→Intention→Behavior | .129 | .010 | .249 | .140 | .072 | .207 | -.010 | -.148 | .127 |
| PBC→Intention→Behavior | .100 | .024 | .177 | .101 | .020 | .182 | .000 | -.112 | .111 |
| Correlations | | | | | | | | | |
| Attitude↔PBC | .327 | .223 | .430 | .314 | .224 | .403 | .013 | -.124 | .150 |
| SN↔PBC | .311 | .201 | .421 | .347 | .266 | .428 | -.036 | -.172 | .101 |
| Attitude↔SN | .468 | .323 | .614 | .444 | .363 | .526 | .024 | -.142 | .191 |

Note. β = Standardized path coefficient; Wald CI₉₅ = Wald 95% confidence interval; LL = Lower limit of CI₉₅; UL = Upper limit of CI₉₅; CI₉₅ = Conventional 95% confidence interval; β_{diff} = Difference in standardized path coefficient; SN = Subjective norms; PBC = Perceived behavioral control; ^aModel comparisons made using Schenker and Gentleman's (2001) 'standard method' using confidence intervals about the mean difference.

Table H4

Standardized Path Coefficients for Direct and Indirect Effects for the Meta-Analytic Structural Equation Model (Stage 2) of the Theory of Planned Behavior for the Time Lag Moderator Analysis with Model Comparisons

| Effect | Studies with shorter time lag (≤ 6 weeks) | | | Studies with longer time lag (> 6 weeks) | | | Model comparisons ^a | | |
|-----------------------------|---|-----------------------|------|---|-----------------------|------|--------------------------------|------------------|------|
| | β | Wald CI ₉₅ | | β | Wald CI ₉₅ | | β_{diff} | CI ₉₅ | |
| | | LL | UL | | LL | UL | | LL | UL |
| Direct effects | | | | | | | | | |
| Intention→Behavior | .469 | .385 | .553 | .467 | .277 | .657 | .002 | -.205 | .210 |
| PBC→Behavior | .215 | .110 | .320 | .059 | -.129 | .248 | .155 | -.061 | .371 |
| Attitude→Intention | .296 | .219 | .373 | .260 | .044 | .477 | .035 | -.195 | .265 |
| PBC→Intention | .299 | .237 | .361 | .266 | .110 | .423 | .033 | -.136 | .201 |
| SN→Intention | .394 | .300 | .488 | .291 | .119 | .462 | .103 | -.092 | .299 |
| Indirect effects | | | | | | | | | |
| Attitude→Intention→Behavior | .139 | .095 | .182 | .122 | .009 | .234 | .017 | -.103 | .137 |
| SN→Intention→Behavior | .185 | .131 | .239 | .136 | .043 | .228 | .049 | -.058 | .156 |
| PBC→Intention→Behavior | .140 | .099 | .181 | .124 | .026 | .222 | .016 | -.090 | .122 |
| Correlations | | | | | | | | | |
| Attitude↔PBC | .399 | .343 | .455 | .341 | .193 | .488 | .059 | -.099 | .217 |
| SN↔PBC | .477 | .423 | .531 | .357 | .235 | .479 | .120 | -.013 | .254 |
| Attitude↔SN | .549 | .462 | .637 | .420 | .293 | .547 | .129 | -.025 | .283 |

Note. β = Standardized path coefficient; Wald CI₉₅ = Wald 95% confidence interval; LL = Lower limit of CI₉₅; UL = Upper limit of CI₉₅; CI₉₅ = Conventional 95% confidence interval; β_{diff} = Difference in standardized path coefficient; SN = Subjective norms; PBC = Perceived behavioral control; ^aModel comparisons made using Schenker and Gentleman's (2001) 'standard method' using confidence intervals about the mean difference.

Table H5

Standardized Path Coefficients for Direct and Indirect Effects for the Meta-Analytic Structural Equation Model (Stage 2) of the Theory of Planned Behavior for the Sample Type Moderator Analysis with Model Comparisons

| Effect | Studies on mothers/female caregivers | | | Studies on parents/caregivers | | | Model comparisons ^a | | |
|-----------------------------|---|-----------------------|------|----------------------------------|-----------------------|------|--------------------------------|------------------|------|
| | β | Wald CI ₉₅ | | β | Wald CI ₉₅ | | β_{diff} | CI ₉₅ | |
| | | LL | UL | | LL | UL | | LL | UL |
| Direct effects | | | | | | | | | |
| Intention→Behavior | .530 | .372 | .688 | .413 | .275 | .551 | .117 | -.093 | .327 |
| PBC→Behavior | .137 | -.036 | .311 | .287 | .169 | .404 | -.149 | -.359 | .060 |
| Attitude→Intention | .300 | .157 | .442 | .334 | .166 | .502 | -.034 | -.255 | .186 |
| PBC→Intention | .219 | .088 | .350 | .153 | .007 | .300 | .065 | -.131 | .262 |
| SN→Intention | .313 | .179 | .446 | .267 | .129 | .405 | .046 | -.146 | .238 |
| Indirect effects | | | | | | | | | |
| Attitude→Intention→Behavior | .159 | .075 | .242 | .138 | .059 | .217 | .021 | -.094 | .136 |
| SN→Intention→Behavior | .166 | .079 | .252 | .110 | .042 | .179 | .055 | -.055 | .166 |
| PBC→Intention→Behavior | .116 | .032 | .199 | .063 | -.003 | .129 | .053 | -.054 | .159 |
| Correlations | | | | | | | | | |
| Attitude↔PBC | .352 | .289 | .415 | .319 | .198 | .441 | .033 | -.104 | .170 |
| SN↔PBC | .350 | .269 | .430 | .328 | .239 | .416 | .022 | -.098 | .141 |
| Attitude↔SN | .530 | .419 | .539 | .355 | .231 | .480 | .124 | -.014 | .262 |

Note. β = Standardized path coefficient; Wald CI₉₅ = Wald 95% confidence interval; LL = Lower limit of CI₉₅; UL = Upper limit of CI₉₅; CI₉₅ = Conventional 95% confidence interval; β_{diff} = Difference in standardized path coefficient; SN = Subjective norms; PBC = Perceived behavioral control; ^aModel comparisons made using Schenker and Gentleman's (2001) 'standard method' using confidence intervals about the mean difference.

Table H6

Standardized Path Coefficients for Direct and Indirect Effects for the Meta-Analytic Structural Equation Model (Stage 2) of the Theory of Planned Behavior for the Behavior Type Moderator Analysis (Dietary Behaviors vs. Physical Activity/Energy Expenditure Behaviors) with Model Comparisons

| Effect | Dietary behaviors | | | Physical activity/ Energy expenditure behaviors | | | Model comparisons ^a | | |
|-----------------------------|-------------------|-----------------------|------|---|-----------------------|------|--------------------------------|------------------|-------|
| | β | Wald CI ₉₅ | | β | Wald CI ₉₅ | | β_{diff} | CI ₉₅ | |
| | | LL | UL | | LL | UL | | LL | UL |
| Direct effects | | | | | | | | | |
| Intention→Behavior | .500 | .294 | .706 | .488 | .384 | .592 | .012 | -.219 | .243 |
| PBC→Behavior | .176 | -.090 | .443 | .253 | .134 | .373 | -.077 | -.369 | .215 |
| Attitude→Intention | .336 | .152 | .521 | .135 | -.198 | .468 | .202 | -.179 | .582 |
| PBC→Intention | .089 | -.082 | .260 | .199 | -.050 | .448 | -.110 | -.412 | .192 |
| SN→Intention | .203 | .031 | .375 | .567 | .300 | .834 | -.364 | -.682 | -.047 |
| Indirect effects | | | | | | | | | |
| Attitude→Intention→Behavior | .168 | .054 | .283 | .066 | -.097 | .229 | .102 | -.097 | .302 |
| SN→Intention→Behavior | .101 | .005 | .198 | .277 | .152 | .402 | -.175 | -.333 | -.018 |
| PBC→Intention→Behavior | .044 | -.044 | .133 | .097 | -.031 | .225 | -.053 | -.208 | .103 |
| Correlations | | | | | | | | | |
| Attitude↔PBC | .299 | .177 | .422 | .294 | .154 | .434 | .005 | -.181 | .191 |
| SN↔PBC | .306 | .177 | .434 | .405 | .221 | .589 | -.099 | -.324 | .125 |
| Attitude↔SN | .401 | .318 | .484 | .446 | .131 | .761 | -.045 | -.370 | .281 |

Note. β = Standardized path coefficient; Wald CI₉₅ = Wald 95% confidence interval; LL = Lower limit of CI₉₅; UL = Upper limit of CI₉₅; CI₉₅ = Conventional 95% confidence interval; β_{diff} = Difference in standardized path coefficient; SN = Subjective norms; PBC = Perceived behavioral control; ^aModel comparisons made using Schenker and Gentleman's (2001) 'standard method' using confidence intervals about the mean difference.

Table H7

Standardized Path Coefficients for Direct and Indirect Effects for the Meta-Analytic Structural Equation Model (Stage 2) of the Theory of Planned Behavior for the Behavior Type Moderator Analysis (Dietary Behaviors vs. Protection/Safety Behaviors) with Model Comparisons

| Effect | Dietary behaviors | | | Protection/Safety behaviors | | | Model comparisons ^a | | |
|-----------------------------|-------------------|-----------------------|------|-----------------------------|-----------------------|------|--------------------------------|------------------|------|
| | β | Wald CI ₉₅ | | β | Wald CI ₉₅ | | β_{diff} | CI ₉₅ | |
| | | LL | UL | | LL | UL | | LL | UL |
| Direct effects | | | | | | | | | |
| Intention→Behavior | .500 | .294 | .706 | .475 | .319 | .630 | .025 | -.233 | .283 |
| PBC→Behavior | .176 | -.090 | .443 | .126 | -.045 | .298 | .050 | -.267 | .367 |
| Attitude→Intention | .336 | .152 | .521 | .373 | .239 | .507 | -.037 | -.264 | .191 |
| PBC→Intention | .089 | -.082 | .260 | .284 | .165 | .402 | -.195 | -.403 | .013 |
| SN→Intention | .203 | .031 | .375 | .270 | .168 | .373 | -.068 | -.268 | .133 |
| Indirect effects | | | | | | | | | |
| Attitude→Intention→Behavior | .168 | .054 | .283 | .177 | .099 | .255 | -.009 | -.147 | .129 |
| SN→Intention→Behavior | .101 | .005 | .198 | .128 | .062 | .195 | -.027 | -.144 | .090 |
| PBC→Intention→Behavior | .044 | -.044 | .133 | .135 | .056 | .213 | -.090 | -.208 | .028 |
| Correlations | | | | | | | | | |
| Attitude↔PBC | .299 | .177 | .422 | .369 | .281 | .458 | -.070 | -.222 | .081 |
| SN↔PBC | .306 | .177 | .434 | .314 | .244 | .384 | -.009 | -.155 | .138 |
| Attitude↔SN | .401 | .318 | .484 | .437 | .343 | .531 | -.036 | -.161 | .089 |

Note. β = Standardized path coefficient; Wald CI₉₅ = Wald 95% confidence interval; LL = Lower limit of CI₉₅; UL = Upper limit of CI₉₅; CI₉₅ = Conventional 95% confidence interval; β_{diff} = Difference in standardized path coefficient; SN = Subjective norms; PBC = Perceived behavioral control; ^aModel comparisons made using Schenker and Gentleman's (2001) 'standard method' using confidence intervals about the mean difference.

Table H8

Standardized Path Coefficients for Direct and Indirect Effects for the Meta-Analytic Structural Equation Model (Stage 2) of the Theory of Planned Behavior for the Behavior Type Moderator Analysis (Physical Activity/Energy Expenditure Behaviors vs. Protection/Safety Behaviors) with Model Comparisons

| Effect | Physical activity/ Energy expenditure behaviors | | | Protection/Safety behaviors | | | Model comparisons ^a | | |
|-----------------------------|---|-----------------------|------|-----------------------------|-----------------------|------|--------------------------------|------------------|------|
| | β | Wald CI ₉₅ | | β | Wald CI ₉₅ | | β_{diff} | CI ₉₅ | |
| | | LL | UL | | LL | UL | | LL | UL |
| Direct effects | | | | | | | | | |
| Intention→Behavior | .488 | .384 | .592 | .475 | .319 | .630 | .013 | -.174 | .200 |
| PBC→Behavior | .253 | .134 | .373 | .126 | -.045 | .298 | .127 | -.082 | .336 |
| Attitude→Intention | .135 | -.198 | .468 | .373 | .239 | .507 | -.238 | -.597 | .120 |
| PBC→Intention | .199 | -.050 | .448 | .284 | .165 | .402 | -.085 | -.360 | .190 |
| SN→Intention | .567 | .300 | .834 | .270 | .168 | .373 | .297 | .011 | .583 |
| Indirect effects | | | | | | | | | |
| Attitude→Intention→Behavior | .066 | -.097 | .229 | .177 | .099 | .255 | -.111 | -.292 | .070 |
| SN→Intention→Behavior | .277 | .152 | .402 | .128 | .062 | .195 | .148 | .007 | .290 |
| PBC→Intention→Behavior | .097 | -.031 | .225 | .135 | .056 | .213 | -.038 | -.188 | .112 |
| Correlations | | | | | | | | | |
| Attitude↔PBC | .294 | .154 | .434 | .369 | .281 | .458 | -.075 | -.241 | .090 |
| SN↔PBC | .405 | .221 | .589 | .314 | .244 | .384 | .091 | -.106 | .288 |
| Attitude↔SN | .446 | .131 | .761 | .437 | .343 | .531 | .009 | -.320 | .337 |

Note. β = Standardized path coefficient; Wald CI₉₅ = Wald 95% confidence interval; LL = Lower limit of CI₉₅; UL = Upper limit of CI₉₅; CI₉₅ = Conventional 95% confidence interval; β_{diff} = Difference in standardized path coefficient; SN = Subjective norms; PBC = Perceived behavioral control; ^aModel comparisons made using Schenker and Gentleman's (2001) 'standard method' using confidence intervals about the mean difference.

Table H9

Standardized Path Coefficients for Direct and Indirect Effects for the Meta-Analytic Structural Equation Model (Stage 2) of the Theory of Planned Behavior for the Study Quality Moderator Analysis with a Checklist Cut-off Value Set at 65% with Model Comparisons

| Effect | High (acceptable) quality studies | | | Low (questionable) quality studies | | | Model comparisons ^a | | |
|-----------------------------|-----------------------------------|-----------------------|------|------------------------------------|-----------------------|------|--------------------------------|------------------|-------|
| | β | Wald CI ₉₅ | | β | Wald CI ₉₅ | | β_{diff} | CI ₉₅ | |
| | | LL | UL | | LL | UL | | LL | UL |
| Direct effects | | | | | | | | | |
| Intention→Behavior | .385 | .257 | .514 | .615 | .445 | .785 | -.230 | -.442 | -.017 |
| PBC→Behavior | .261 | .134 | .388 | .092 | -.095 | .280 | .169 | -.058 | .395 |
| Attitude→Intention | .280 | .116 | .443 | .354 | .213 | .495 | -.074 | -.290 | .141 |
| PBC→Intention | .207 | .083 | .331 | .180 | .020 | .339 | .028 | -.175 | .230 |
| SN→Intention | .293 | .153 | .433 | .293 | .153 | .432 | .000 | -.197 | .198 |
| Indirect effects | | | | | | | | | |
| Attitude→Intention→Behavior | .108 | .038 | .177 | .218 | .122 | .314 | -.110 | -.229 | .009 |
| SN→Intention→Behavior | .113 | .046 | .180 | .180 | .083 | .277 | -.067 | -.185 | .051 |
| PBC→Intention→Behavior | .080 | .023 | .137 | .110 | .000 | .221 | -.031 | -.154 | .093 |
| Correlations | | | | | | | | | |
| Attitude↔PBC | .345 | .244 | .446 | .327 | .255 | .399 | .018 | -.107 | .142 |
| SN↔PBC | .357 | .282 | .431 | .302 | .212 | .392 | .055 | -.062 | .171 |
| Attitude↔SN | .423 | .319 | .527 | .421 | .330 | .512 | .002 | -.136 | .140 |

Note. β = Standardized path coefficient; Wald CI₉₅ = Wald 95% confidence interval; LL = Lower limit of CI₉₅; UL = Upper limit of CI₉₅; CI₉₅ = Conventional 95% confidence interval; β_{diff} = Difference in standardized path coefficient; SN = Subjective norms; PBC = Perceived behavioral control; ^aModel comparisons made using Schenker and Gentleman's (2001) 'standard method' using confidence intervals about the mean difference.

Table H10

Standardized Path Coefficients for Direct and Indirect Effects for the Meta-Analytic Structural Equation Model (Stage 2) of the Theory of Planned Behavior for the Study Quality Moderator Analysis with a Checklist Cut-off Value Set at 70% with Model Comparisons

| Effect | High (acceptable) quality studies | | | Low (questionable) quality studies | | | Model comparisons ^a | | |
|-----------------------------|-----------------------------------|-----------------------|------|------------------------------------|-----------------------|------|--------------------------------|------------------|-------|
| | β | Wald CI ₉₅ | | β | Wald CI ₉₅ | | β_{diff} | CI ₉₅ | |
| | | LL | UL | | LL | UL | | LL | UL |
| Direct effects | | | | | | | | | |
| Intention→Behavior | .366 | .252 | .480 | .589 | .426 | .753 | -.224 | -.423 | -.024 |
| PBC→Behavior | .285 | .141 | .429 | .122 | -.039 | .282 | .163 | -.052 | .379 |
| Attitude→Intention | .210 | .030 | .391 | .370 | .246 | .494 | -.160 | -.379 | .059 |
| PBC→Intention | .203 | .072 | .335 | .182 | .040 | .324 | .021 | -.172 | .215 |
| SN→Intention | .330 | .195 | .464 | .297 | .168 | .426 | .033 | -.153 | .219 |
| Indirect effects | | | | | | | | | |
| Attitude→Intention→Behavior | .077 | .008 | .146 | .218 | .134 | .303 | -.141 | -.250 | -.032 |
| SN→Intention→Behavior | .121 | .057 | .184 | .175 | .086 | .264 | -.054 | -.164 | .055 |
| PBC→Intention→Behavior | .074 | .020 | .128 | .107 | .012 | .203 | -.033 | -.143 | .077 |
| Correlations | | | | | | | | | |
| Attitude↔PBC | .356 | .237 | .475 | .316 | .250 | .382 | .040 | -.096 | .176 |
| SN↔PBC | .368 | .303 | .432 | .305 | .217 | .393 | .062 | -.047 | .172 |
| Attitude↔SN | .383 | .265 | .501 | .442 | .359 | .525 | -.059 | -.203 | .085 |

Note. β = Standardized path coefficient; Wald CI₉₅ = Wald 95% confidence interval; LL = Lower limit of CI₉₅; UL = Upper limit of CI₉₅; CI₉₅ = Conventional 95% confidence interval; β_{diff} = Difference in standardized path coefficient; SN = Subjective norms; PBC = Perceived behavioral control; ^aModel comparisons made using Schenker and Gentleman's (2001) 'standard method' using confidence intervals about the mean difference.

Table H11

Standardized Path Coefficients for Direct and Indirect Effects for the Meta-Analytic Structural Equation Model (Stage 2) of the Theory of Planned Behavior for the Study Quality Moderator Analysis with a Checklist Cut-off Value Set at 75% with Model Comparisons

| Effect | High (acceptable) quality studies | | | Low (questionable) quality studies | | | Model comparisons ^a | | |
|-----------------------------|-----------------------------------|-----------------------|------|------------------------------------|-----------------------|------|--------------------------------|------------------|------|
| | β | Wald CI ₉₅ | | β | Wald CI ₉₅ | | β_{diff} | CI ₉₅ | |
| | | LL | UL | | LL | UL | | LL | UL |
| Direct effects | | | | | | | | | |
| Intention→Behavior | .362 | .159 | .565 | .515 | .392 | .639 | -.153 | -.391 | .084 |
| PBC→Behavior | .388 | .203 | .572 | .144 | .020 | .268 | .244 | .021 | .466 |
| Attitude→Intention | .262 | -.040 | .564 | .327 | .222 | .432 | -.065 | -.385 | .255 |
| PBC→Intention | .150 | -.060 | .360 | .203 | .090 | .315 | -.053 | -.291 | .186 |
| SN→Intention | .241 | .056 | .425 | .312 | .203 | .420 | -.071 | -.285 | .143 |
| Indirect effects | | | | | | | | | |
| Attitude→Intention→Behavior | .095 | -.026 | .216 | .169 | .107 | .231 | -.074 | -.210 | .062 |
| SN→Intention→Behavior | .087 | .001 | .173 | .161 | .093 | .228 | -.074 | -.183 | .036 |
| PBC→Intention→Behavior | .054 | -.026 | .134 | .104 | .037 | .172 | -.050 | -.155 | .055 |
| Correlations | | | | | | | | | |
| Attitude↔PBC | .425 | .234 | .616 | .320 | .260 | .381 | .105 | -.096 | .305 |
| SN↔PBC | .332 | .281 | .382 | .323 | .250 | .396 | .009 | -.080 | .098 |
| Attitude↔SN | .388 | .245 | .530 | .430 | .353 | .507 | -.043 | -.205 | .119 |

Note. β = Standardized path coefficient; Wald CI₉₅ = Wald 95% confidence interval; LL = Lower limit of CI₉₅; UL = Upper limit of CI₉₅; CI₉₅ = Conventional 95% confidence interval; β_{diff} = Difference in standardized path coefficient; SN = Subjective norms; PBC = Perceived behavioral control; ^aModel comparisons made using Schenker and Gentleman's (2001) 'standard method' using confidence intervals about the mean difference.

References

Schenker, N., & Gentleman, J. F. (2001). On judging the significance of differences by examining the overlap between confidence intervals. *The American Statistician*, 55, 182-186. doi: 10.1198/000313001317097960