

**This is a self-archived version of an original article. This version may differ from the original in pagination and typographic details.**

**Author(s):** Selenius, Jannica S.; Wasenius, Niko S.; Kautiainen, Hannu; Salonen, Minna; von Bonsdorff, Mikaela; Eriksson, Johan G.

**Title:** Impaired glucose regulation, depressive symptoms, and health-related quality of life

**Year:** 2020

**Version:** Published version

**Copyright:** © 2020 the Authors




**Rights:** CC BY 4.0

**Rights url:** <https://creativecommons.org/licenses/by/4.0/>

**Please cite the original version:**

Selenius, J. S., Wasenius, N. S., Kautiainen, H., Salonen, M., von Bonsdorff, M., & Eriksson, J. G. (2020). Impaired glucose regulation, depressive symptoms, and health-related quality of life. *BMJ Open Diabetes Research and Care*, 8, Article e001568. <https://doi.org/10.1136/bmjdr-2020-001568>

# Impaired glucose regulation, depressive symptoms, and health-related quality of life

Jannica S Selenius <sup>1,2</sup>, Niko S Wasenius <sup>1,2</sup>, Hannu Kautiainen,<sup>1</sup>  
Minna Salonen,<sup>2,3</sup> Mikaela von Bonsdorff,<sup>2,4</sup> Johan G Eriksson <sup>1,2,5,6</sup>

**To cite:** Selenius JS, Wasenius NS, Kautiainen H, *et al*. Impaired glucose regulation, depressive symptoms, and health-related quality of life. *BMJ Open Diab Res Care* 2020;**8**:e001568. doi:10.1136/bmjdr-2020-001568

Received 14 May 2020  
Revised 7 September 2020  
Accepted 14 September 2020



© Author(s) (or their employer(s)) 2020. Re-use permitted under CC BY. Published by BMJ.

<sup>1</sup>Department of General Practice and Primary Health Care, University of Helsinki, Helsinki, Finland

<sup>2</sup>Public Health Research Programme, Folkhälsan Research Center, Helsinki, Finland

<sup>3</sup>Department of Epidemiology and Health Promotion, National Public Health Institute, Helsinki, Finland

<sup>4</sup>Gerontology Research Center and Faculty of Sport and Health Sciences, University of Jyväskylä, Jyväskylä, Finland

<sup>5</sup>Singapore Institute for Clinical Sciences (SICS), Agency for Science, Technology and Research (A\*STAR), Singapore

<sup>6</sup>Department of Obstetrics & Gynecology, Yong Loo Lin School of Medicine, National University of Singapore, Singapore

## Correspondence to

Dr Jannica S Selenius;  
jannica.selenius@helsinki.fi

## ABSTRACT

**Introduction** This study aims to investigate whether the associations between impaired glucose regulation and health-related quality of life are modified by severity or type of depressive symptoms.

**Research design and methods** For this cross-sectional study, we included 1939 individuals (mean age 61.5 years) from the Helsinki Birth Cohort Study. Between 2001 and 2004, a standard 2-hour 75 g oral glucose tolerance test was applied to define normoglycemia, pre-diabetes, and newly diagnosed diabetes. Information on previously diagnosed diabetes was collected from national registers and questionnaires. Pre-diabetes was defined as having either impaired fasting glucose or impaired glucose tolerance. The Mental and Physical Component Scores of health-related quality of life were assessed with Short Form-36. Beck's Depression Inventory was employed to investigate the severity of depressive symptoms and to define minimal (depression score <10), non-melancholic, and melancholic types of depression. We analyzed data with general linear models adjusted for sex, age, lifestyle factors, comorbidities, and body mass index.

**Results** Glucose regulation subgroups, especially previously known diabetes, were associated with lower Physical Component Score ( $p=0.001$ ) and higher depression score ( $p=0.015$ ), but not with the Mental Component Score ( $p=0.189$ ). Non-melancholic depression was associated with lower Physical and Mental Component Scores compared with those with depression score <10 and melancholic depression ( $p<0.001$ ), independently of glucose regulation status ( $p$  for glucose regulation status by depression type interaction  $>0.54$ ).

**Conclusions** Non-melancholic type of depression and previously known diabetes are independently associated with lower health-related quality of life. This should be appraised in long-term treatment of diabetes and when treating non-melancholic depressive symptoms to maintain a higher health-related quality of life.

## INTRODUCTION

Globally, both type 2 diabetes and depression show a high and increasing prevalence. Diabetes is estimated to affect 463 million people globally,<sup>1</sup> the corresponding number for depression being over 300 million.<sup>2</sup> Diabetes attributed to 5 million deaths in 2017 while depression was the leading cause for

## Significance of this study

### What is already known about this subject?

▶ Diabetes and depression are widespread diseases on the rise with a considerable negative influence on health-related quality of life.

### What are the new findings?

▶ In addition to contributing to the perception that previously known diabetes is associated with poorer health-related quality of life, we found that decreased health-related quality of life is seen in subjects with non-melancholic depressive symptoms regardless of glucose regulation status.

### How might these results change the focus of research or clinical practice?

▶ These results highlight the importance of maintaining mental health in individuals suffering from diabetes to prevent health-related quality of life from deteriorating, further our findings promote more research aiming at characterizing type of depressive symptoms associated with impairment in glucose regulation.

suicide globally.<sup>2,3</sup> In addition, being global health burdens, diabetes and depression affect the individuals suffering from the disorders in several ways, with impact on physical and mental health and overall well-being.<sup>4-6</sup>

Diabetes is strongly associated with both depression and poorer quality of life.<sup>7</sup> Poorer quality of life and non-optimal mental health can influence diabetes care negatively, predisposing to worse glycemic control and an increased risk for diabetes-associated complications.<sup>4</sup> According to a recent meta-analysis, individuals with diabetes were around 30% more likely to develop depression than individuals with normoglycemia (NGT).<sup>8</sup> Some studies have reported no association between pre-diabetic and depressive symptoms, suggesting that depression stems more from the burden of diabetes than from insulin resistance, which is a characteristic feature of

the pre-diabetic states.<sup>9 10</sup> Furthermore, compared with newly diagnosed diabetes, previously diagnosed diabetes has been more closely linked to both depression and poorer quality of life.<sup>8</sup>

Metabolic syndrome is characterized by disturbances in glucose and lipid metabolism as well as adiposity and is a major risk factor for the development of type 2 diabetes. Studies have reported a linkage between metabolic syndrome and subgroups of depression, that is, mainly for non-melancholic and melancholic depression, and metabolic syndrome.<sup>11-13</sup> Non-melancholic depression is characterized by hypersomnia and weight gain, whereas melancholic depression is linked with loss of appetite and disturbances in affect and psychomotor functions.<sup>14</sup> Non-melancholic depression has been proposed to show a stronger association with inflammatory diseases, while melancholic depression mainly is a disease of the central nervous system not associated with systemic processes.<sup>14 15</sup>

Although the link between type 2 diabetes and depression has been studied, less is known about the type of depression associated with different degrees of impairment in glucose regulation. Furthermore, only few studies have focused on the relationship between pre-diabetes and health-related quality of life (HRQoL). Previous studies have reported that previously known diabetes is associated with poorer physical and mental components of HRQoL.<sup>4 5 16</sup> Only a few studies have investigated the relationship between pre-diabetes and HRQoL, and the findings have been inconsistent.<sup>17-19</sup>

The aim of this study was to investigate whether the association between the different degrees of impairment in glucose regulation and HRQoL is modified by the severity and type of depressive symptoms.

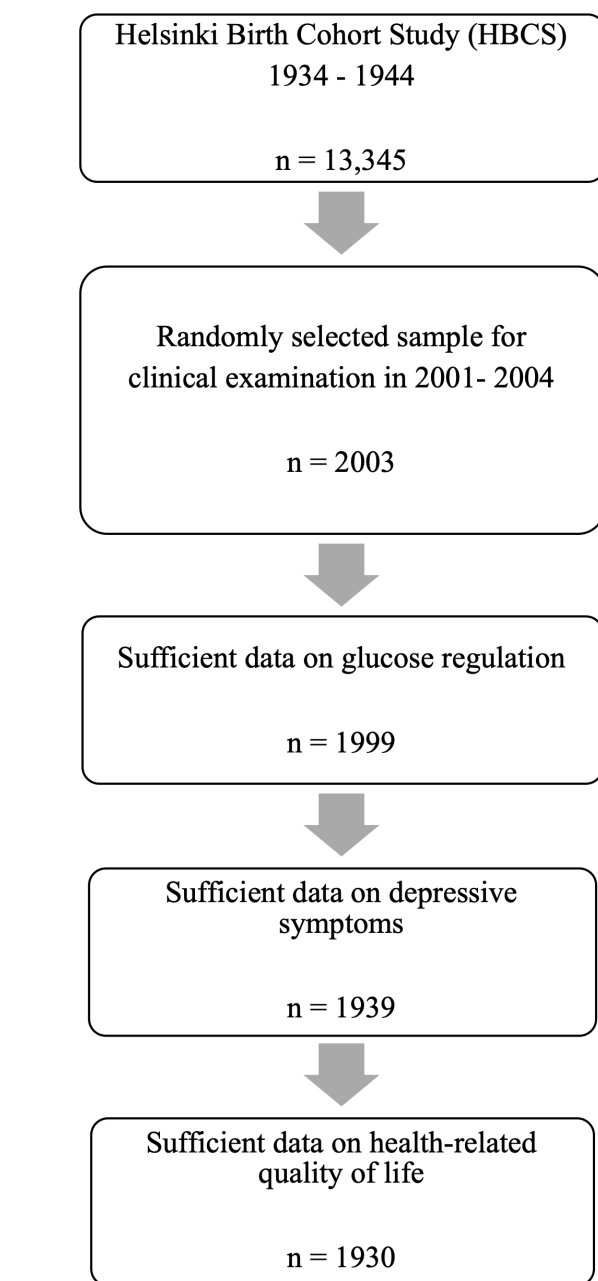
## RESEARCH DESIGN AND METHODS

### Participants

The Helsinki Birth Cohort Study (HBCS) includes 13 345 individuals born between 1934 and 1944 at the Helsinki University Central Hospital or the Helsinki City Maternity Hospital.<sup>20</sup> They attended child welfare clinics in Helsinki and were living in Finland in 1971 when a unique personal identification number was allocated to all individuals of the Finnish population.<sup>21</sup> A baseline clinical examination was conducted between 2001 and 2004, involving 2003 cohort members. Of those, 1999 had sufficient data on glucose regulation status and were included in this study. After excluding individuals with missing information, 1939 had sufficient information on depressive symptoms and 1930 on HRQoL (figure 1).

### Glucose regulation

The WHO 2006 criteria<sup>22</sup> were used for diagnosing diabetes, impaired glucose tolerance (IGT), and impaired fasting glucose (IFG). Fasting plasma glucose was measured in all individuals participating in the clinical examination and a standard 2-hour 75 g oral glucose tolerance test (OGTT) was conducted, except for those



**Figure 1** Flow chart of the data screening process.

with previously known diabetes. Previously known diabetes was defined by self-report, register linkage, or use of medication for diabetes. Individuals who received a diagnosis of diabetes for the first time based on the OGTT were classified as having newly diagnosed diabetes. Individuals who met the criteria for both IFG and IGT were classified as having IGT. IFG or IGT were grouped together and called pre-diabetes.

### Health-related quality of life

HRQoL was assessed using the validated Finnish 36-Item Short Form Health Survey (SF-36) version 1.0 questionnaire.<sup>23</sup> The average age at the time of filling the questionnaire was 61.5 years (SD 2.9). The SF-36 consists of eight domains: physical functioning (10 items), role



limitations caused by physical health problems (four items), role limitations caused by emotional health problems (three items), bodily pain (two items), general health (five items), vitality (four items), mental health (five items), and social functioning (two items). Possible scores for each item ranged from 0 (lowest perceived functioning) to 100 (highest perceived functioning). Physical and mental health component scores were aggregated using the US reference population (1990) to standardize the eight domains and for factor score coefficients. The summary scores were standardized using a mean of 50 and a SD of 10. The Finnish SF-36 has been reported as reliable and well validated.<sup>24</sup>

### Depression

Depression was screened for using the validated 21-item Beck's Depression Inventory (BDI) questionnaire. The psychometric properties of the Finnish BDI have been well validated.<sup>25 26</sup> Patients who scored 10 or higher were considered to suffer from depression, as previously suggested.<sup>27</sup> Participants with a BDI score  $\geq 10$  were divided into melancholic and non-melancholic types of depression<sup>28</sup> based on the Diagnostic and Statistical Manual of Mental Disorders, fourth edition criteria. Melancholic symptoms in the BDI (sadness, past failure, loss of pleasure, feelings of guilt, punishment feelings, loss of interest, irritability, change of sleeping, and appetite) were applied to divide the participants into melancholic and non-melancholic types of depression.<sup>12 29-31</sup>

### Covariates

At the clinical examination, subjects were asked about their current health situation, use of medication, and lifestyle characteristics. Socioeconomic status was obtained from Statistics Finland and was coded as high official, low official, self-employed, and laborer based on the original classification system.<sup>32</sup> Smoking was coded as never, former, and current, and alcohol use was coded as never or having quit, less than once a week, or weekly. Anthropometrics including weight and height were measured and body mass index (BMI) was calculated as weight in kilograms divided with height in meters squared. At the clinical examination, performed by three trained study nurses, the cohort members were asked about their past 12-month leisure-time physical activity using a validated exercise questionnaire: the Kuopio Ischemic Heart Disease Risk Factor Study.<sup>33</sup> Leisure-time physical activity was measured in metabolic equivalents of task (MET),<sup>34</sup> which were multiplied with time (hours) and frequency to calculate MET-hours as previously suggested.<sup>35</sup> Cohort members were also asked about chronic diseases and conditions, including cardiovascular conditions (congestive heart failure, arrhythmias, claudication, angina pectoris, previous heart attack, and stroke), lung diseases (asthma, emphysema, and chronic bronchitis), musculoskeletal disorders (rheumatoid arthritis, osteoporosis) and presence of cancer using validated questionnaires.

The presence of comorbidities was coded as none, one, two, or more.

### Statistical analysis

Characteristics of the cohort members were compared across glucose regulation groups using general linear models. In the case of violation (eg, non-normal distribution), a bootstrap-type analysis with 2500 replications was used. General linear models were also applied to investigate the associations between glucose regulation status and physical functioning, mental functioning, and depressive symptoms. Adjustments were first made for sex and age, then for lifestyle factors (smoking status, alcohol consumption, socioeconomic status, leisure-time physical activity, and comorbidities), and lastly for BMI as our early models showed a relatively strong effect by BMI when controlling for it. All tests were performed two-tailed and the level of significance was set at  $p < 0.05$ . Statistical analyses were carried out using Stata Version/MP V.15.1 (Stata, College Station, Texas, USA) and IBM SPSS Statistics V.25 (IBM, Armonk, New York, USA).

## RESULTS

### Participants' characteristics

This study included 897 men and 1042 women. The mean age at the time of the clinical examination was 61.5 years for both sexes (SD 2.8 for men and 3.0 for women). The characteristics of the cohort members across the glucose regulation groups—that is, NGT, pre-diabetes, newly diagnosed diabetes, and previously known diabetes—are shown in [table 1](#).

### Subgroups of glucose regulation and HRQoL and BDI

As described in [table 2](#), in the HRQoL subscales, previously known diabetes was associated with lower physical functioning, general health, vitality, social functioning, and PCS after the model was fully adjusted for covariates. In addition, we detected a significant ( $p < 0.02$ ) association between the physical and emotional role limitations and bodily pain after adjusting for sex, age, smoking status, alcohol consumption, socioeconomic status, leisure-time physical activity, and comorbidities in patients with previously known diabetes. However, these associations attenuated after further adjusting for BMI ( $p > 0.073$ ). Previously known diabetes was also associated with higher BDI score ([table 2](#)).

### HRQoL according to types of depressive symptoms across glucose regulation subgroups

Both non-melancholic and melancholic depressive symptoms were associated with lower Physical Component Score (PCS) and Mental Component Score (MCS) compared with those with a BDI score  $< 10$  regardless of glucose regulation status ([table 3](#) and [figure 2](#)). No significant interaction was detected between the different groups of impairment in glucose regulation and type of depressive symptoms on the HRQoL components ([figure 2](#)).

**Table 1** Characteristics of the study population according to glucose regulation status

Characteristics	Glucose regulation status				P value
	NGT (N=1010)	Pre-diabetes (N=610)	Newly diagnosed diabetes (N=181)	Previously known diabetes (N=134)	
Sex, n (%)					<0.001
Male	427 (42)	293 (48)	103 (57)	73 (54)	
Female	578 (58)	317 (52)	78 (43)	61 (46)	
Age, years	61.3 (2.8)	61.9 (3.1)	61.8 (2.8)	61.4 (3.0)	0.001
BMI, kg/m <sup>2</sup>	26.4 (4.1)	28.0 (4.3)	29.9 (5.1)	30.9 (5.6)	<0.001
Smoking, n (%)					0.015
Current	239 (24)	134 (22)	50 (28)	30 (22)	
Quit	322 (32)	210 (34)	68 (38)	61 (46)	
Never	444 (44)	266 (44)	63 (35)	43 (32)	
Alcohol use, n (%)					0.002
Weekly	516 (51)	345 (57)	84 (46)	51 (38)	
Less than weekly	411 (41)	230 (38)	80 (44)	74 (55)	
Never/quit	78 (8)	35 (6)	17 (9)	9 (7)	
Socioeconomic status, n (%)					0.069
High official	162 (16)	82 (13)	18 (10)	17 (13)	
Low official	436 (43)	275 (45)	72 (40)	47 (35)	
Self-employed	82 (8)	59 (10)	20 (11)	16 (12)	
Laborers	325 (32)	194 (32)	71 (39)	54 (40)	
LTPA MET-hour/week, median (IQR)	39.5 (42.0)	33.7 (39.5)	30.7 (36.8)	30.7 (37.6)	0.020
Comorbidities, n (%)					
None	699 (70)	424 (70)	113 (62)	80 (60)	<0.001
One	235 (23)	132 (22)	37 (20)	25 (19)	
Two or more	71 (7.0)	54 (9)	31 (17)	29 (22)	0.002

Pre-diabetes = impaired fasting glucose and impaired glucose tolerance.

Newly diagnosed diabetes = diabetes diagnosed with OGTT at clinical examination in 2001–2004.

Previously known diabetes = diabetes diagnosed before the clinical examination in 2001–2004.

1 MET = 3.5 mL of O<sub>2</sub>/kg/min.

BMI, body mass index; LTPA, leisure time physical activity; MET-h, metabolic equivalent of task per hour; NGT, normal glucose tolerance; OGTT, oral glucose tolerance test.

**Table 2** Association between the subgroups of glucose regulation and HRQoL and depression scores

Variables	NGT (n=1005)	Pre- diabetes (n=610)	Newly diagnosed diabetes (n=181)	Previously known diabetes (n=134)	P-values for between-group comparison		
					Model 1	Model 2	Model 3
<b>HRQoL</b>							
Physical functioning	85.0 (16.8)	82.3 (18.2)	80.1 (17.5)	71.4 (23.1)	<0.001	<0.001	<0.001
General health	66.4 (18.1)	63.8 (17.9)	60.1 (18.5)	51.7 (17.8)	<0.001	<0.001	<0.001
Vitality	71.8 (18.9)	70.4 (19.2)	70.3 (20.8)	64.4 (20.7)	<0.001	0.001	0.012
Mental health	81.9 (14.4)	80.6 (15.0)	81.6 (15.7)	79.8 (17.2)	0.086	0.099	0.160
Physical role limitations	82.6 (30.6)	80.7 (33.0)	78.3 (34.6)	72.2 (36.4)	0.001	0.020	0.459
Emotional role limitations	85.1 (28.4)	84.2 (31.2)	81.8 (32.3)	75.4 (36.3)	0.001	0.007	0.073
Social functioning	90.2 (17.9)	90.0 (16.8)	90.3 (16.6)	83.5 (21.1)	<0.001	0.001	0.007
Bodily pain	78.6 (22.0)	78.6 (22.4)	77.9 (21.8)	70.6 (25.7)	<0.001	0.012	0.070
PCS	49.0 (8.5)	48.2 (8.7)	47.0 (8.1)	43.2 (10.0)	<0.001	<0.001	0.001
MCS	54.2 (8.7)	53.9 (8.9)	54.3 (9.0)	52.9 (10.8)	0.267	0.231	0.189
BDI	5.4 (4.9)	5.9 (5.1)	5.8 (5.9)	7.4 (5.7)	<0.001	0.001	0.015

Data are shown as mean (SD). Model 1 adjusted for age and sex. Model 2 adjusted for Model 1+smoking, alcohol usage, socioeconomic status, comorbidities, and leisure-time physical activity. Model 3 adjusted for Model 2+body mass index.

Pre-diabetes = impaired fasting glucose and impaired glucose tolerance,

Newly diagnosed diabetes = diabetes diagnosed with the OGTT at clinical examination in 2001-2004; Previously known diabetes = diabetes diagnosed before the clinical examination in 2001-2004.

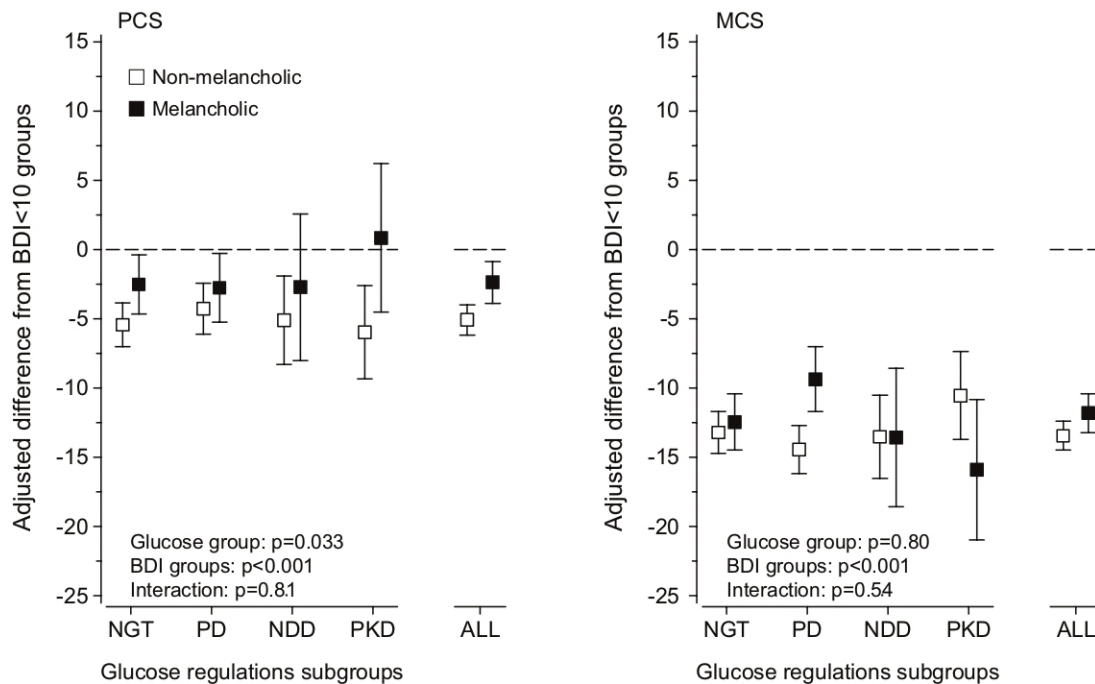
BDI, Beck's Depression Inventory; HRQoL, health-related quality of life; MCS, Mental Component Score; NGT, normal glucose tolerance; PCS, Physical Component Score.

**Table 3** PCS and MCS of health-related quality of life among subjects with depressive symptoms according to glucose regulation subgroups

Variables	BDI <10	Non-melancholic depressive symptoms	Melancholic depressive symptoms	P-values for between-group comparison		
				Model 1	Model 2	Model 3
<b>Normal glucose tolerance (n=1005)</b>						
n	839	110	56			
PCS	50.0 (7.6)	42.8 (10.1)	46.2 (10.7)	<0.001	<0.001	<0.001
MCS	56.4 (6.1)	43.3 (11.9)	44.0 (11.1)	<0.001	<0.001	<0.001
<b>Pre-diabetes (n=610)</b>						
n	483	85	42			
PCS	49.4 (8.1)	43.0 (9.7)	44.9 (9)	<0.001	<0.001	<0.001
MCS	56.5 (5.7)	42.2 (11)	47.6 (11.4)	<0.001	<0.001	<0.001
<b>Newly diagnosed diabetes (n=181)</b>						
n	144	28	9			
PCS	48.1 (7.4)	42.0 (10)	44.2 (6.6)	0.003	0.005	0.015
MCS	57.1 (6.2)	43.5 (10.5)	43.6 (10)	<0.001	<0.001	<0.001
<b>Previously known diabetes (n=134)</b>						
n	98	27	9			
PCS	44.7 (9.3)	37.4 (11.2)	44.3 (9.1)	0.006	0.014	0.064
MCS	56.1 (6.6)	45.5 (14.2)	40.5 (16.2)	<0.001	<0.001	<0.001

Data are shown as mean (SD). Model 1: adjusted for age and sex. Model 2: adjusted for Model 1+smoking, alcohol usage, socioeconomic status, comorbidities and leisure-time physical activity. Model 3: adjusted for model 2+body mass index.

BDI, Beck's Depression Inventory; MCS, Mental Component Score; PCS, Physical Component Score.



**Figure 2** Adjusted differences of non-melancholic and melancholic depression types from the Beck's Depression Inventory (BDI) <10 group in the Physical Component Score (PCS) and Mental Component Score (MCS) of health-related quality of life (HRQoL) among subgroups of glucose regulation. Analyses are adjusted for sex, age, smoking status, alcohol consumption, socioeconomic status, leisure-time physical activity, comorbidities, and body mass index. Error bars indicate 95% CIs. ; ALL, all groups; NDD, newly diagnosed diabetes; NGT, normal glucose tolerance; PD, pre-diabetes; PKD, previously known diabetes.

## CONCLUSIONS

Our findings showed no interaction between impairment in glucose regulation and type of depressive symptoms on HRQoL. However, both types of depressive symptoms had a stronger influence on the mental component of HRQoL than on the physical component. This association was detected regardless of impairment in glucose regulation. We also found that non-melancholic depressive symptoms were associated with lower physical quality of life in all subjects regardless of glucose regulation status. Based on these findings, it seems that type of depressive symptoms does not modify the association between glucose regulation and HRQoL.

Previously known diabetes was associated with higher BDI scores, which is consistent with previous findings.<sup>7,8,36</sup> No association was detected between pre-diabetes and newly diagnosed diabetes and BDI score. Other studies have also been unable to find an association between depression and pre-diabetes and newly diagnosed diabetes.<sup>37,38</sup> It has previously been suggested that the burden of diabetes as a disease is responsible for the decline in mental health among people with diabetes, which could explain our findings as they indicate that pre-diabetes is not linked with depressive symptoms nor poorer mental functioning.<sup>39</sup>

We found that HRQoL was lower among subjects with previously known diabetes, but not among those with pre-diabetes and newly diagnosed diabetes. In line with our findings, it has been suggested that longer duration

of diabetes, but not pre-diabetes, is related to decreased HRQoL.<sup>4,5,16</sup> Decreased HRQoL related to years of living with diabetes may be attributed to higher prevalence of comorbidities and complications, such as neuropathy and retinopathy that have been associated with lower HRQoL.<sup>40,41</sup> Unfortunately, we were unable to adjust for specific diabetes complications, which might affect our findings. The PCS was lower among subjects with previously known diabetes compared with the other subgroups. Despite this, previously known diabetes was not associated with a decrease in the physical role limitations domain nor with the bodily pain domain of the SF-36 score. Physical inactivity and obesity affect physical performance, and both are known risk factors for developing diabetes<sup>42</sup>; however, even after adjusting for them, there was a significant association between impaired glucose regulation and poorer physical functioning. According to our adjusted models, BMI strongly affects the associations between diabetes and poorer HRQoL.

As expected, both types of depression lowered MCS more than the PCS in all subgroups of glucose regulation. Subjects with symptoms of non-melancholic depression were associated with lower physical HRQoL than subjects with BDI score <10 or symptoms of melancholic depression. This association was independent of diabetes status, although most clearly seen in subjects with NGT and previously known diabetes. This is to the best of our knowledge the first study with the aim to investigate whether type of depressive symptoms affects HRQoL

among the diabetic population. According to previous studies, non-melancholic depressive symptoms have been found to associate with elevated fasting glucose and IGT<sup>13</sup> as well as with metabolic and inflammatory conditions,<sup>12 14</sup> and has been suggested to originate from a systemic inflammation in the organism, whereas melancholic depression is thought to be purely a product of imbalances in the function of the central nervous system.<sup>14 15 43</sup> This theory suggests that non-melancholic depression shares a common underlying denominator with other systemic diseases, such as diabetes, which our findings support.

Our study has several strengths. The cohort is well characterized, and our results were produced using both clinical and registered-based data. We were able to control for several factors known to influence both prevalence of depression and HRQoL. We used an OGTT to assess glucose regulation status, the validated SF-36 for assessing HRQoL, and the standardized BDI questionnaire for assessing depression. We used the summary scores of the SF-36 as well as the component scores. The study also has some limitations. Our study sample is from a homogeneous, restricted area in Finland and the findings from this study might therefore have to be cautiously implemented in other populations. As a result, the sample selected may not be representative of the entire Finnish population and the findings may not be generalized to represent the Finnish population. Although our sample is large when it comes to glucose regulation status, we may have limited power to investigate association related to the non-melancholic depressive symptoms. Due to the cross-sectional study design, we were unable to assess causal relationships. Lastly, although we did take in consideration comorbidities, we were unable to adjust for complications of diabetes.

In conclusion, both the non-melancholic and melancholic type of depressive symptoms affect mental HRQoL more severely than physical HRQoL regardless of impairment in glucose regulation. Symptoms of non-melancholic depression are associated with lower physical HRQoL in all subjects, especially in normoglycemic subjects and in subjects with previously known diabetes. Thus, our findings support the necessity of preventing pre-diabetes from turning into diabetes and identifying the type of depression to maintain high HRQoL. Resources should also be focused on preventing a decline in HRQoL and mental health in all stages of impaired glucose regulation. Further research is needed to investigate the association between diabetes and non-melancholic depressive symptoms.

**Contributors** JSS researched data, contributed to discussion, and wrote the manuscript. NSW researched data, contributed to discussion, and wrote the manuscript. HK contributed to discussion and reviewed/ edited the manuscript. MS, MvB, and JGE contributed to discussion and reviewed/edited the manuscript. All authors contributed substantially to the conception and design or analysis and interpretation of data and the drafting of the article or critical revision.

**Funding** HBCS was supported by Finnish Foundation for Cardiovascular Research, Finnish Foundation for Diabetes Research, Juho Vainio Foundation, Academy

of Finland, Novo Nordisk Foundation, Signe and Ane Gyllenberg Foundation, Samfundet Folkhälsan, Finska Läkaresällskapet, Liv och Hälsa, European Commission FP7 (DORIAN) Grant Agreement No 278 603 and EU H2020-PHC-2014-DynaHealth Grant No 633 595 and EU Horizon 2020 Award 733 206 LIFECYCLE.

**Competing interests** None declared.

**Patient consent for publication** Not required.

**Ethics approval** The study was approved by the Ethics Committee of Epidemiology and Public Health of the Hospital District of Helsinki and Uusimaa and that of the National Public Health Institute, Helsinki, and follows the guidelines of the Declaration of Helsinki. All participants gave a written, informed consent.

**Provenance and peer review** Not commissioned; externally peer reviewed.

**Data availability statement** All data relevant to the study are included in the article.

**Open access** This is an open access article distributed in accordance with the Creative Commons Attribution 4.0 Unported (CC BY 4.0) license, which permits others to copy, redistribute, remix, transform and build upon this work for any purpose, provided the original work is properly cited, a link to the licence is given, and indication of whether changes were made. See: <https://creativecommons.org/licenses/by/4.0/>.

#### ORCID iDs

Jannica S Selenius <http://orcid.org/0000-0002-4336-8580>

Niko S Wasenius <http://orcid.org/0000-0002-9007-6660>

Johan G Eriksson <http://orcid.org/0000-0002-2516-2060>

#### REFERENCES

- 1 Saeedi P, Petersohn I, Salpea P, *et al*. Global and regional diabetes prevalence estimates for 2019 and projections for 2030 and 2045: Results from the International Diabetes Federation Diabetes Atlas, 9<sup>th</sup> edition. *Diabetes Res Clin Pract* 2019;157:107843.
- 2 World Health Organization. *Depression and other common mental disorders –Global health estimates*. Geneva: World Health Organization, 2017.
- 3 Cho NH, Shaw JE, Karuranga S, *et al*. IDF diabetes atlas: global estimates of diabetes prevalence for 2017 and projections for 2045. *Diabetes Res Clin Pract* 2018;138:271–81.
- 4 Rubin RR, Peyrot M. Quality of life and diabetes. *Diabetes Metab Res Rev* 1999;15:205–18.
- 5 Schanner C, Falck A, Keskitalo A, *et al*. Health-Related quality of life of Finnish patients with diabetes. *Scand J Public Health* 2016;44:765–71.
- 6 Ali S, Stone MA, Peters JL, *et al*. The prevalence of co-morbid depression in adults with type 2 diabetes: a systematic review and meta-analysis. *Diabet Med* 2006;23:1165–73.
- 7 Eaton WW, Armenian H, Gallo J, *et al*. Depression and risk for onset of type II diabetes. A prospective population-based study. *Diabetes Care* 1996;19:1097–102.
- 8 Chireh B, Li M, D'Arcy C. Diabetes increases the risk of depression: a systematic review, meta-analysis and estimates of population attributable fractions based on prospective studies. *Prev Med Rep* 2019;14:100822.
- 9 Aujla N, Abrams KR, Davies MJ, *et al*. The prevalence of depression in white-European and South-Asian people with impaired glucose regulation and screen-detected type 2 diabetes mellitus. *PLoS One* 2009;4:e7755.
- 10 Icks A, Kruse J, Dragano N, *et al*. Are symptoms of depression more common in diabetes? results from the Heinz Nixdorf recall study. *Diabet Med* 2008;25:1330–6.
- 11 Takeuchi T, Nakao M, Kachi Y, *et al*. Association of metabolic syndrome with atypical features of depression in Japanese people. *Psychiatry Clin Neurosci* 2013;67:532–9.
- 12 Seppälä J, Vanhala M, Kautiainen H, *et al*. Prevalence of metabolic syndrome in subjects with melancholic and non-melancholic depressive symptoms. A Finnish population-based study. *J Affect Disord* 2012;136:543–9.
- 13 Korniloff K, Kotiaho S, Vanhala M, *et al*. Musculoskeletal pain in melancholic and atypical depression. *Pain Med* 2017;18:341–7.
- 14 Penninx BWJH, Milaneschi Y, Lamers F, *et al*. Understanding the somatic consequences of depression: biological mechanisms and the role of depression symptom profile. *BMC Med* 2013;11:129.
- 15 Lamers F, Vogelzangs N, Merikangas KR, *et al*. Evidence for a differential role of HPA-axis function, inflammation and metabolic



- syndrome in melancholic versus atypical depression. *Mol Psychiatry* 2013;18:692–9.
- 16 Wändell PE. Quality of life of patients with diabetes mellitus. An overview of research in primary health care in the Nordic countries. *Scand J Prim Health Care* 2005;23:68–74.
  - 17 Hunger M, Holle R, Meisinger C, et al. Longitudinal changes in health-related quality of life in normal glucose tolerance, prediabetes and type 2 diabetes: results from the KorA S4/F4 cohort study. *Qual Life Res* 2014;23:2515–20.
  - 18 Neumann A, Schoffer O, Norström F, et al. Health-Related quality of life for pre-diabetic states and type 2 diabetes mellitus: a cross-sectional study in Västerbotten Sweden. *Health Qual Life Outcomes* 2014;12:150.
  - 19 Ghorbani A, Ziaee A, Esmailzadeha N, et al. Association between health-related quality of life and impaired glucose metabolism in Iran: the Qazvin metabolic diseases study. *Diabet Med* 2014;31:754–8.
  - 20 von Bondorff MB, Törmäkangas T, Salonen M, et al. Early life origins of all-cause and cause-specific disability pension: findings from the Helsinki Birth Cohort Study. *PLoS One* 2015;10:e0122134.
  - 21 Eriksson JG, Kajantie E, Lampl M, et al. Trajectories of body mass index amongst children who develop type 2 diabetes as adults. *J Intern Med* 2015;278:219–26.
  - 22 World Health Organization. *Definition and diagnosis of diabetes mellitus and intermediate hyperglycemia*. Geneva: World Health Organization, 2006.
  - 23 Ware JE, Sherbourne CD. The mos 36-item short-form health survey (SF-36). I. conceptual framework and item selection. *Med Care* 1992;30:473–83.
  - 24 Aalto A-M, Aro AR, Teperi J. *RAND-36 as a measure of health-related quality of life. reliability, construct validity and reference values in the Finnish General population. Stakes, research reports*. 101, 1999.
  - 25 Viinamäki H, Tanskanen A, Honkalampi K, et al. Is the Beck depression inventory suitable for screening major depression in different phases of the disease? *Nord J Psychiatry* 2004;58:49–53.
  - 26 Wang Y-P, Gorenstein C. Psychometric properties of the Beck depression Inventory-II: a comprehensive review. *Braz J Psychiatry* 2013;35:416–31.
  - 27 Beck AT, Steer RA, Carbin MG. Psychometric properties of the Beck depression inventory: twenty-five years of evaluation. *Clin Psychol Rev* 1988;8:77–100.
  - 28 Sheehan DV, Lecrubier Y, Sheehan KH, et al. *The Mini-International Neuropsychiatric Interview (M.I.N.I.): the development and validation of a structured diagnostic psychiatric interview for DSM-IV and ICD-10*. *J Clin Psychiatry* 1998;59 Suppl 20:22–33.
  - 29 Vanhala M, Jokelainen J, Keinänen-Kiukaanniemi S, et al. Depressive symptoms predispose females to metabolic syndrome: a 7-year follow-up study. *Acta Psychiatr Scand* 2009;119:137–42.
  - 30 Sheehan DV LY. *The Mini-International neuropsychiatric interview (mini)*. Tampa, fl: University of South Florida, Institute for research in psychiatry. Paris: INSERM-Hopital de la Salpetriere, 1994.
  - 31 Steer RA, Ball R, Ranieri WF, et al. Dimensions of the Beck depression Inventory-II in clinically depressed outpatients. *J Clin Psychol* 1999;55:117–28.
  - 32 Central Statistical Office of Finland Classification of Socio-economic Group. *Handbooks 17*. Helsinki, 1989.
  - 33 Lakka TA, Venäläinen JM, Rauramaa R, et al. Relation of leisure-time physical activity and cardiorespiratory fitness to the risk of acute myocardial infarction. *N Engl J Med* 1994;330:1549–54.
  - 34 Alberti KG, Zimmet PZ. Definition, diagnosis and classification of diabetes mellitus and its complications. Part 1: diagnosis and classification of diabetes mellitus provisional report of a who consultation. *Diabet Med* 1998;15:539–53.
  - 35 Wasenius N, Venojärvi M, Manderros S, et al. Unfavorable influence of structured exercise program on total leisure-time physical activity. *Scand J Med Sci Sports* 2014;24:404–13.
  - 36 Lyra E Silva NdM, Lam MP, Soares CN, et al. Insulin resistance as a shared pathogenic mechanism between depression and type 2 diabetes. *Front Psychiatry* 2019;10:57.
  - 37 Sun JC, Xu M, Lu JL, et al. Associations of depression with impaired glucose regulation, newly diagnosed diabetes and previously diagnosed diabetes in Chinese adults. *Diabet Med* 2015;32:935–43.
  - 38 Aujla N, Skinner TC, Khunti K, et al. The prevalence of depressive symptoms in a white European and South Asian population with impaired glucose regulation and screen-detected type 2 diabetes mellitus: a comparison of two screening tools. *Diabet Med* 2010;27:896–905.
  - 39 Engum A, Mykletun A, Midtthjell K, et al. Depression and diabetes: a large population-based study of sociodemographic, lifestyle, and clinical factors associated with depression in type 1 and type 2 diabetes. *Diabetes Care* 2005;28:1904–9.
  - 40 Shao H, Yang S, Fonseca V, et al. Estimating quality of life decrements due to diabetes complications in the United States: the health utility index (HUI) diabetes complication equation. *Pharmacoeconomics* 2019;37:921–9.
  - 41 Stojanović M, Cvetanović G, Anđelković Apostolović M, et al. Impact of socio-demographic characteristics and long-term complications on quality of life in patients with diabetes mellitus. *Cent Eur J Public Health* 2018;26:104–10.
  - 42 Weisman A, Fazli GS, Johns A, et al. Evolving trends in the epidemiology, risk factors, and prevention of type 2 diabetes: a review. *Can J Cardiol* 2018;34:552–64.
  - 43 Lamers F, de Jonge P, Nolen WA, et al. Identifying depressive subtypes in a large cohort study: results from the Netherlands study of depression and anxiety (NESDA). *J Clin Psychiatry* 2010;71:1582–9.