

This is a self-archived version of an original article. This version may differ from the original in pagination and typographic details.

Author(s): Kuusiniemi, Pasi; Cocks, J. F. C.; Eskola, Kari; Greenlees, P. T.; Helariutta, Kerttuli; Jones, Peter; Julin, Rauno; Juutinen, Sakari; Kankaanpää, Harri; Keenan, Alex; Kettunen, Heikki; Leino, Matti; Muikku, Maarit; Nieminen, Päivi; Rahkila, Panu; Uusitalo, Juha

Title: Studies of 225,226U alpha decay chains

Year: 2001

Version: Published version

Copyright: © Authors, 2001

Rights: CC BY 4.0

Rights url: <https://creativecommons.org/licenses/by/4.0/>

Please cite the original version:

Kuusiniemi, P., Cocks, J. F. C., Eskola, K., Greenlees, P. T., Helariutta, K., Jones, P., Julin, R., Juutinen, S., Kankaanpää, H., Keenan, A., Kettunen, H., Leino, M., Muikku, M., Nieminen, P., Rahkila, P., & Uusitalo, J. (2001). Studies of 225,226U alpha decay chains. *Acta Physica Polonica B*, 32(3), 1009-1013. <http://www.actaphys.uj.edu.pl/fulltext?series=Reg&vol=32&page=1009>

STUDIES OF $^{225,226}\text{U}$ ALPHA DECAY CHAINS* **

P. KUUSINIEMI^a, J.F.C. COCKS^a, K. ESKOLA^b, P.T. GREENLEES^a
K. HELARIUTTA^a, P. JONES^a, R. JULIN^a, S. JUUTINEN^a
H. KANKAANPÄÄ^a, A. KEENAN^a, H. KETTUNEN^a, M. LEINO^a
M. MUIKKU^a, P. NIEMINEN^a, P. RAHKILA^a, AND J. UUSITALO^a

^a Dept. of Physics, University of Jyväskylä
FIN-40351, Jyväskylä, Finland

^b Dept. of Physics, University of Helsinki
FIN-00014, Helsinki, Finland

(Received November 3, 2000)

Studies of $^{225,226}\text{U}$ α -decay chains produced via heavy ion induced fusion reactions of $^{22}\text{Ne} + ^{208}\text{Pb} \rightarrow ^{230}\text{U}$ and of $^{18}\text{O} + ^{208}\text{Pb} \rightarrow ^{226}\text{Th}$ were carried out using the JYFL gas-filled magnetic recoil separator RITU. The data obtained for α -decays of $^{225,226}\text{U}$, $^{221,222}\text{Th}$, ^{218}Ra and ^{213}Rn concerning their α -particle energies, half-lives and α -decay fine structures are compared to previous investigations.

PACS numbers: 23.60.+e, 27.90.+b

1. Experiments

Studies of $^{225,226}\text{U}$ α -decay chains were performed using two heavy ion induced fusion evaporation reactions, $^{22}\text{Ne} + ^{208}\text{Pb}$ and $^{18}\text{O} + ^{208}\text{Pb}$. The first experiment was employed for the α -particle decay studies of $^{225,226}\text{U}$ and the second for their subsequent daughter α -decay chains. Both beams were delivered from the JYFL K130 heavy ion cyclotron and the separation of fusion products was performed using the gas-filled magnetic recoil separator RITU [1]. The detection of evaporation residues and their decay was based on the use of a position sensitive PIPS Si-detector, where the evaporation residues are implanted and their subsequent decays are measured. In the second experiment also a single Ge-detector was used at the focal plane of

* Presented at the XXXV Zakopane School of Physics "Trends in Nuclear Physics", Zakopane, Poland, September 5–13, 2000.

** This work has been supported by the Academy of Finland under the Finnish Centre of Excellence Programme 2000-2005 (Project No. 44875, Nuclear and Condensed Matter Programme at JYFL).

RITU in order to obtain information about the short living α -active nuclei using the α - γ coincidence technique.

2. Results

In the data analysis the correlation method [2] was employed. The energy calibration was based on known α -activities produced in the reactions providing an energy resolution of about 35 keV (FWHM). The relatively poor energy resolution was due to weak cooling of the Si-detector, since with slow recoils it was not possible to use any foils to separate the Si-detector from He-filling gas. The half-life analysis was carried out using recoil- α (Fig. 1) or α - α correlations. There the correlated event pairs can have their origin either in true correlations or in accidental ones. Thus the decay curve for a single activity consists of two components, one for the real correlations (λ_{meas}) and one for the accidental correlations (r). The true decay constant is extracted using the formula $\lambda = \lambda_{\text{meas}} - r$ [3]. As an example, the decay curves of ^{222}Th α -particle decays to both 0^+ and 2^+ states are shown in figure 1.

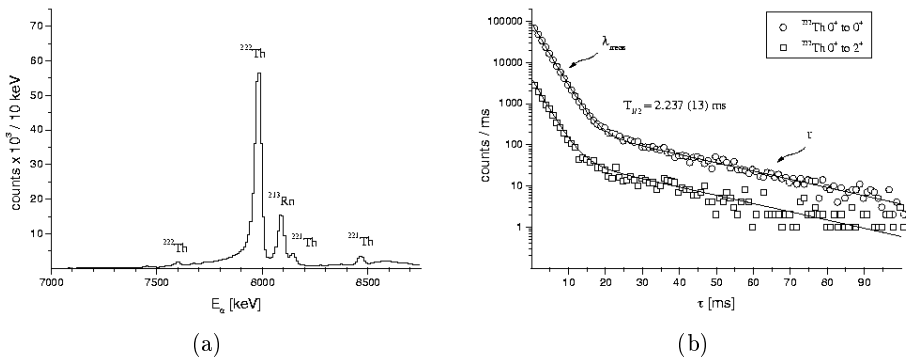


Fig. 1. (a) Recoil- α correlations for the $^{18}\text{O} + ^{208}\text{Pb}$ reaction at a projectile energy of 92 MeV. (b) Measured lifetime curves for ^{222}Th alpha decays.

The experimental results of $^{225,226}\text{U}$ α -decay chains are expressed in Table I. The data for ^{226}U , ^{222}Th and ^{218}Ra are consistent with previously measured values reported in references [4–6]. In the case of ^{222}Th , a 389.5(5) keV γ -ray transition from 2^+ to 0^+ in ^{218}Ra was observed in coincidence with the known α -decay of ^{222}Th . This transition was also observed in an in-beam γ spectroscopy study [4]. The study of ^{218}Ra is interesting from the point of view of half-life since several values for ^{218}Ra have been published with relatively small error bars varying from 14(2) μs and 15.6(10) μs to the somewhat longer value of 26(2) μs and 25.6(11) μs reported in refer-

ences [7–10], respectively. The measured half-life in this work is consistent with values reported in [8] and [9].

The data for ^{225}U are consistent with data reported in [11]. Also a new alpha branch with an energy of 7630(20) keV was observed in recoil- α - α correlations. However, only two triple-chains assigned to ^{225}U were observed, but the measured energy is consistent with known energy of $(11/2^+)$ -state of ^{221}Th observed in an in-beam experiment [12].

TABLE I

α particle energies, intensities and half-lives of $^{225,226}\text{U}$ α -decay chains.

Nuclide	Present data			Previous data			Ref.
	E_α [keV]	I_α [%]	$T_{1/2}$ [ms]	E_α [keV]	I_α [%]	$T_{1/2}$ [ms]	
^{225}U	7867(6)	83(7)	84(4)	7879(15)	85	95(15)	[11]
	7820(20)	15(7)		7821(15)	15		
	7630(20)	2(1)					
^{226}U	7566(4)	85(11)	260(20)	7570(20)	85(5)	200(50)	[4]
	7384(7)	15(5)		7420(20)	15(5)		
^{221}Th	8469(4)	21*	1.73(3)	8472(5)	39(2)	2.8(3)	[12]
	8142(3)	72*		8146(5)	56(3)		
	7732(4)	7*		7733(8)	6(1)		
^{222}Th	7980(2)	97.7(9)	2.237(13)	7982(8)	97(1)	2.8(3)	[5]
	7599(2)	2.3(2)		7600(15)	3(1)		
^{218}Ra	**	**	0.0252(3)	8389(6)	100	0.0256(11)	[6]
^{213}Rn	8090(3)	98.2(12)		8088(8)	99.0(5)		
	7555(4)	1.0(2)	7553(15)	1.0(5)			
	7254(4)	0.8(2)					

* Errors in intensities are not determined because of high uncertainty due to internal conversion electron summing (see figure 2 and text for details).

** α -particle energy and intensity were not determined because of pile-up of daughter (^{214}Rn , $T_{1/2} = 0.27(2)$ μs [7]) pulses.

The nuclide ^{221}Th is somewhat difficult from point of view of fine structure studies due to rather strong internal conversion. This causes summing of energies of conversion electrons and emitted α -particles. Thus alpha branches for ^{221}Th reported in [12] are difficult to verify from data measured in this work, but α -particle energies can be easily identified (see figure 2, solid line). Possible α -particle energies observed between the known peaks with energies 8142(3) keV and 8469(4) keV can be also explained by sum energy of emitted α -particle and conversion electron. This interpretation is actually supported by Ra X-ray gated recoil- α correlations (dashed line) shown in figure 2. There counts for X-ray gated α -particles are expressed on the right hand side and counts for recoil- α - α correlated ^{221}Th (solid line) are

shown on the left hand side. Thus the origin of the α -peaks around 8250 keV and 8375 keV shown in figure 2 remains unverified from the data obtained from these experiments. However, two alpha branches are indeed reported in [14] with energies of 8265(10) keV and 8375(10) keV and intensities of 4 % and 11 %, respectively.

Alpha- γ coincidences were also observed for ^{221}Th . In this study the γ -ray transitions from excited ($7/2^+$) and ($11/2^+$) states in ^{217}Ra fed by 8142(3) keV and 8469(4) keV α -particles, respectively, to the ground state were observed. However, γ -ray coincidences with the α -particle decay with energies around 8250 keV and 8375 keV were not observed. This could also mean that the origin of the α -particle decay with energies around 8250 keV and 8375 keV are a result of conversion electron summing.

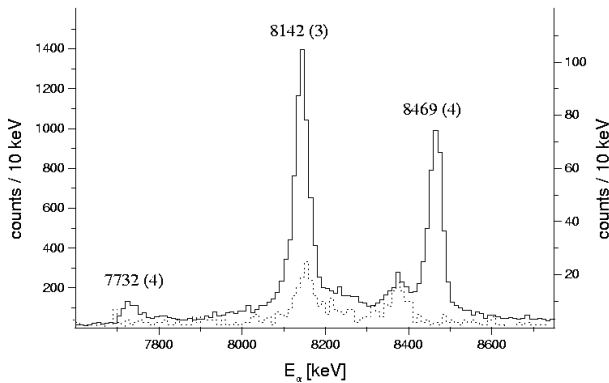


Fig. 2. Recoil- α - α correlated ^{221}Th (solid line) and recoil- α gated by Ra X-rays (dashed line).

The decay of the nuclide ^{213}Rn is more straightforward and the data obtained in this work are consistent with previously published data. Also a new alpha branch with α -particle energy of 7254(4) keV was observed in coincidence with known γ -rays from the $3/2^-$ state of ^{209}Po . Finally, it is worth noting that the α -particle decay properties of ^{217}Ra , ^{214}Rn and $^{209,210}\text{Po}$ which also belong to the decay chains studied were not possible to study because of their unsuitable half-lives from the point of view of electronics or correlation method.

REFERENCES

- [1] M. Leino *et al.*, *Nucl. Instrum. Methods Phys. Res.* **B99**, 653 (1995).
- [2] K.-H. Schmidt *et al.*, *Nucl. Phys.* **A318**, 253 (1979).
- [3] M. Leino *et al.*, *Phys. Rev.* **C24**, 2370 (1981).

- [4] Y.A. Akovali, *Nucl. Data Sheets* **77**, 271 (1996).
- [5] Y.A. Akovali, *Nucl. Data Sheets* **76**, 457 (1995).
- [6] Y.A. Akovali, *Nucl. Data Sheets* **76**, 127 (1995).
- [7] K. Valli *et al.*, *Phys. Rev.* **C1**, 2115 (1970).
- [8] K.S. Toth *et al.*, *Phys. Rev. Lett.* **56**, 2360 (1986).
- [9] M. Wieland *et al.*, *Phys. Rev.* **C46**, 2628 (1992).
- [10] A.N. Andreyev *et al.*, Proc. 41st Ann. Conf. Nucl. Spectrosc. Struct. At. Nuclei, Minsk 1991, p. 120.
- [11] K.S. Toth *et al.*, *Phys. Rev.* **C45**, 856 (1992).
- [12] Y.A. Akovali, *Nucl. Data Sheets* **61**, 623 (1990).
- [13] Y.A. Akovali, *Nucl. Data Sheets* **66**, 237 (1992).
- [14] A.N. Andreyev *et al.*, *Z. Phys.* **A337**, 229 (1990).