

**This is an electronic reprint of the original article.  
This reprint *may differ* from the original in pagination and typographic detail.**

**Author(s):** Lappi, Tuomas; Paatelainen, Risto

**Title:** The one loop gluon emission light cone wave function

**Year:** 2017

**Version:**

**Please cite the original version:**

Lappi, T., & Paatelainen, R. (2017). The one loop gluon emission light cone wave function. *Annals of Physics*, 379, 34-66. <https://doi.org/10.1016/j.aop.2017.02.002>

All material supplied via JYX is protected by copyright and other intellectual property rights, and duplication or sale of all or part of any of the repository collections is not permitted, except that material may be duplicated by you for your research use or educational purposes in electronic or print form. You must obtain permission for any other use. Electronic or print copies may not be offered, whether for sale or otherwise to anyone who is not an authorised user.

## Accepted Manuscript

The one loop gluon emission light cone wave function

T. Lappi, R. Paatelainen

PII: S0003-4916(17)30050-7

DOI: <http://dx.doi.org/10.1016/j.aop.2017.02.002>

Reference: YAPHY 67329

To appear in: *Annals of Physics*

Received date: 8 November 2016

Accepted date: 6 February 2017



Please cite this article as: T. Lappi, R. Paatelainen, The one loop gluon emission light cone wave function, *Annals of Physics* (2017), <http://dx.doi.org/10.1016/j.aop.2017.02.002>

This is a PDF file of an unedited manuscript that has been accepted for publication. As a service to our customers we are providing this early version of the manuscript. The manuscript will undergo copyediting, typesetting, and review of the resulting proof before it is published in its final form. Please note that during the production process errors may be discovered which could affect the content, and all legal disclaimers that apply to the journal pertain.

## The one loop gluon emission light cone wave function

T. Lappi<sup>1,2</sup> and R. Paatelainen<sup>1,3</sup>

<sup>1</sup> *Department of Physics, P.O. Box 35, 40014 University of Jyväskylä, Finland*

<sup>2</sup> *Helsinki Institute of Physics, P.O. Box 64, 00014 University of Helsinki, Finland*

<sup>3</sup> *Instituto Galego de Física de Altas Enerxías (IGFAE),  
Universidade de Santiago de Compostela, E-15782 Santiago de Compostela, Galicia, Spain*

Light cone perturbation theory has become an essential tool to calculate cross sections for various small- $x$  dilute-dense processes such as deep inelastic scattering and forward proton-proton and proton-nucleus collisions. Here we set out to do one loop calculations in an explicit helicity basis in the four dimensional helicity scheme. As a first process we calculate light cone wave function for one gluon emission to one-loop order in Hamiltonian perturbation theory on the light front. We regulate ultraviolet divergences with transverse dimensional regularization and soft divergences with using a cut-off on longitudinal momentum. We show that when all the renormalization constants are combined, the ultraviolet divergences can be absorbed into the standard QCD running coupling constant, and give an explicit expression for the remaining finite part.

PACS numbers: 24.85.+p, 25.75.-q, 12.38.Mh

### I. INTRODUCTION

Hamiltonian perturbation theory in the light cone (or light front) form [1–4] has become a standard tool in understanding hadronic scattering processes within a first-principles QCD approach. The calculational inconveniences of light cone perturbation theory (LCPT) compared to standard covariant perturbation theory are balanced by several features that make its physical interpretation more transparent. Light cone gauge LCPT only involves physical degrees of freedom, i.e. spin- or helicity states of partons, enabling an interpretation in terms of a constituent picture of hadrons. The factorization between long distance hadronic physics both in the incoming and final state hadrons on one hand, and hard perturbative QCD scattering on the other hand, is naturally implemented in LCPT. This allows for a simultaneous description of inclusive and exclusive processes in a consistent framework.

More recently LCPT has found a new area of application in understanding the nonlinear QCD physics of gluon saturation. Gluon saturation is most naturally understood in the “color glass condensate” (CGC) effective theory [5–8], which describes the soft small- $x$  degrees of freedom in the high energy hadron as a classical field, radiated by color sources representing the large momentum partons. This classical color field can then be probed in various scattering processes by different dilute probes, whose interactions with the target are described in the high energy limit by an eikonal Wilson line on the light cone. The most natural way to describe the structure of the dilute probe (a real or virtual photon, or a quark or gluon from a probe hadron) in terms of a Fock state decomposition of partonic states is the light cone wave function of LCPT. This provides a formalism to factorize cross sections into light-cone wave functions describing the structure of the probe developing on a long timescale before the interaction, and Wilson line operators that describe the instantaneous scattering of the probe Fock state on the target.

Early loop calculations in LCPT [9–14] explored the structure of divergences in the longitudinal and transverse momentum integrals and recovered the one-loop renormalization constants known from covariant theory. Due to the more complicated mathematical structure resulting from the breaking of explicit rotational symmetry, LCPT has never been the formulation of choice for high order loop calculations. More recently, however, calculations of dilute-dense scattering processes in the CGC picture have increasingly started advancing to the NLO level, for example for the small- $x$  evolution equations [15–24], inclusive DIS cross sections [25–27] and single [28–33] and double [34–36] inclusive particle production in the hybrid formalism. Many of these calculations have been, or could be, performed very naturally in LCPT. In particular, the concept of “light-cone wave function” appears frequently in calculations that are factorized into the partonic structure of the probe, and its eikonal interaction with the target.

The primary purpose of this paper is to develop techniques for systematically performing loop calculations in light cone perturbation theory. As a first step in this program we will calculate to one loop order the quark-to-quark-gluon splitting light cone wave function, i.e. the probability amplitude for finding a quark and a gluon state component in the quantum state of an interacting quark. Although the expressions for the diagrammatic rules for LCPT calculations can be found in many references (see in particular [37, 38]), we find that they can be given in a particularly simple form using an explicit spin/helicity basis for both quarks and gluons. This is natural to combine with the four dimensional helicity (FDH) scheme for dimensional regularization, as will be discussed in more detail in Sec. II E.

We start this paper by a brief exposition of the LCPT rules and the concept of the light cone wave function in Sec. II. We then calculate the one-loop contributions, both divergent and finite parts, in Sec. III, assembling the

results in Sec. IV. We finally end with a discussion of applications and future extensions of this calculation in Sec. V.

## II. LC CONVENTIONS AND LCPT RULES

### A. LC coordinates

In light-cone coordinates a four-vector  $x^\mu$  is given by the components

$$x^\mu = (x^+, x^-, \mathbf{x}) \quad \text{with} \quad \mathbf{x} = (x^1, x^2). \quad (1)$$

The component  $x^+$  is the light cone time along which the states are evolved,  $x^-$  is the longitudinal coordinate and  $\mathbf{x}$  the transverse position. We denote spatial three-vectors as  $\vec{x} = (x^1, \mathbf{x})$ . In this work, we use the Kogut-Soper (KS) conventions [1] in which  $x^+$  and  $x^-$  are related to the usual Minkowski coordinates by

$$x^\pm = \frac{1}{\sqrt{2}}(x^0 \pm x^3). \quad (2)$$

The metric tensor is

$$g^{\mu\nu} = g_{\mu\nu} = \begin{pmatrix} 0 & 1 & 0 & 0 \\ 1 & 0 & 0 & 0 \\ 0 & 0 & -1 & 0 \\ 0 & 0 & 0 & -1 \end{pmatrix}, \quad (3)$$

and thus the inner product of two four-vectors is

$$x \cdot y = x^+ y^- + x^- y^+ - \mathbf{x} \cdot \mathbf{y}, \quad (4)$$

where  $x^+ = x_-$  and  $x^- = x_+$ . The canonical conjugate of the longitudinal coordinate  $x^-$  is the longitudinal momentum  $p^+$ , and the evolution in light cone time  $x^+$  is generated by the light cone energy  $p^-$ . In LCPT all particles are on mass shell, with

$$p^- = \frac{\mathbf{p}^2 + m^2}{2p^+}. \quad (5)$$

### B. Normalization of Fock states

In the LC gauge the QCD Hamiltonian (see e.g. [4, 38]) can be expressed entirely in terms of physical degrees of freedom, i.e. each interaction vertices correspond to a real dynamical process. To quantize the Hamiltonian, we expand the dynamical free quark field  $\tilde{\Psi}$  and transverse gluon field  $\tilde{A}_a^\mu$  at  $x^+ = 0$  in terms of the creation and annihilation operators

$$\tilde{\Psi}^i(x^-, \mathbf{x}) = \int \tilde{d}\vec{k} \sum_{h=\pm} \left[ b_h^i(\vec{k}) u_h(\vec{k}) e^{-ik \cdot x} + d_h^{i\dagger}(\vec{k}) v_h(\vec{k}) e^{+ik \cdot x} \right] \quad (6)$$

and

$$\tilde{A}_a^\mu(x^-, \mathbf{x}) = \int \tilde{d}\vec{k} \sum_{\lambda=\pm} \left[ a_\lambda^a(\vec{k}) \epsilon_\lambda^\mu(\vec{k}) e^{-ik \cdot x} + a_\lambda^{a\dagger}(\vec{k}) \epsilon_\lambda^{*\mu}(\vec{k}) e^{+ik \cdot x} \right], \quad (7)$$

where we denote the two fermion spin states  $\pm 1/2$  by  $h = \pm$  for notational simplicity. These field operators satisfy the (anti)commutation relations

$$\left\{ b_h^i(\vec{k}), b_\sigma^{j\dagger}(\vec{p}) \right\} = \left\{ d_h^i(\vec{k}), d_\sigma^{j\dagger}(\vec{p}) \right\} = 2k^+ (2\pi)^3 \delta^{(3)}(\vec{k} - \vec{p}) \delta_{h,\sigma} \delta^{ij} \quad (8)$$

and

$$\left[ a_\lambda^a(\vec{k}), a_{\lambda'}^{b\dagger}(\vec{p}) \right] = 2k^+ (2\pi)^3 \delta^{(3)}(\vec{k} - \vec{p}) \delta_{\lambda,\lambda'} \delta^{ab}. \quad (9)$$

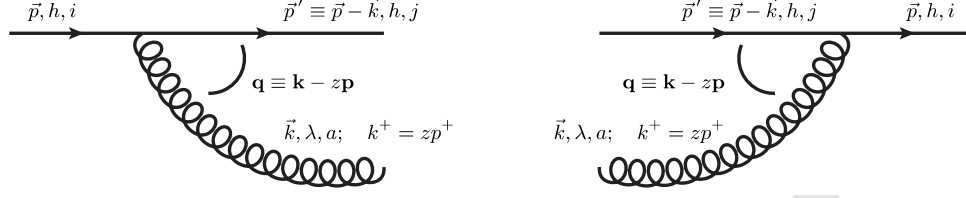


FIG. 1: Left: Gluon emission vertex from a quark,  $V_{\lambda,h}^{i,j,a}(\mathbf{q}, z)$ , where  $i, j$  are quark colors,  $h$  the quark helicity,  $a$  the gluon color and  $\lambda$  the gluon helicity, Eq. (15). Right: Gluon absorption vertex into quark,  $V_{\lambda,h}^{j,a;i}(\mathbf{q}, z)$  Eq. (16).

Here  $h$  and  $\lambda$  are the quark and gluon helicities and  $i, j, a, b$  SU(N) color indices. The momentum space integral measure is as in [38]

$$\int \widetilde{d^4k} = \int \frac{d^4k}{(2\pi)^4} (2\pi) \delta(k^2 - m^2) = \int \frac{dk^+ d^2\mathbf{k}}{2k^+ (2\pi)^3}, \quad (10)$$

where  $k^+ > 0$ . We always work in LC gauge  $\epsilon^+ = 0$  with transverse physical polarizations  $k \cdot \epsilon_\lambda(k) = 0$ , thus the gluon polarization vector simplifies to

$$\epsilon_\lambda^\mu(k) = (0, \epsilon_\lambda^-(k), \boldsymbol{\varepsilon}_\lambda) \quad \text{with} \quad \epsilon_\lambda^-(k) = \frac{\mathbf{k} \cdot \boldsymbol{\varepsilon}_\lambda}{k^+}, \quad (11)$$

and (note the notation  $\epsilon$  for a 4-dimensional and  $\boldsymbol{\varepsilon}$  for a 2-dimensional vector)

$$\epsilon_\lambda(k) \cdot \epsilon_{\lambda'}(k') = -\boldsymbol{\varepsilon}_\lambda \cdot \boldsymbol{\varepsilon}_{\lambda'}. \quad (12)$$

The 2-dimensional physical gluon polarization vectors are

$$\boldsymbol{\varepsilon}_{\lambda=\pm} = \frac{1}{\sqrt{2}} \begin{pmatrix} 1 \\ \pm i \end{pmatrix}. \quad (13)$$

Note that these do not depend on the momentum of the gluon. The polarization vectors satisfy

$$\begin{aligned} \epsilon_\lambda^* \cdot \epsilon_{\lambda'} &= \delta_{\lambda,\lambda'} \\ \epsilon_\lambda^* &= \epsilon_{-\lambda} \\ \epsilon_\lambda \cdot \epsilon_{\lambda'} &= \epsilon_\lambda^* \cdot \epsilon_{\lambda'}^* = \delta_{\lambda,-\lambda'}. \end{aligned} \quad (14)$$

### C. Elementary vertices

Using the light-cone QCD Hamiltonian (e.g. [38]) one can construct the necessary elementary quark and gluon vertices. In this paper we only deal with massless quarks, and therefore helicity is conserved at the gluon emission vertex. The vertices can be very compactly expressed in the helicity basis. This enables a very efficient computation of loop diagrams (compared to e.g. the calculations in Ref. [27]), with the help of computer algebra tools. The well known downside of working with explicit polarizations is that all our particles have exactly two helicity states even in  $4 - 2\epsilon$  spatial dimensions, i.e. we are working in the FDH regularization scheme [39, 40]. This would become problematic at higher orders in perturbation theory.

The simplest vertex is that for the emission of a gluon of momentum  $\vec{k}$  and helicity  $\lambda$  from a quark of momentum  $\vec{p}$  and helicity  $h$ ; it is most naturally expressed in terms of the longitudinal momentum fraction  $z = k^+/p^+$  (note  $0 \leq z \leq 1$ ) and the center-of-mass transverse momentum  $\mathbf{q} = \mathbf{k} - z\mathbf{p}$ . We denote this vertex, shown in Fig. 1 (left), as

$$V_{\lambda,h}^{i,j,a}(\mathbf{q}, z) = -gt_{ji}^a \left[ \bar{u}_h(p') \not{\epsilon}_\lambda^*(k) u_h(p) \right] = \frac{-2gt_{ji}^a}{z\sqrt{1-z}} (\delta_{\lambda,h} + (1-z)\delta_{\lambda,-h}) \mathbf{q} \cdot \boldsymbol{\varepsilon}_\lambda^*. \quad (15)$$

The quark absorption vertex, Fig. 1 (right), is just the complex conjugate:

$$V_{\lambda,h}^{j,a;i}(\mathbf{q}, z) = -gt_{ij}^a \left[ \bar{u}_h(p) \not{\epsilon}_\lambda(k) u_h(p') \right] = \frac{-2gt_{ij}^a}{z\sqrt{1-z}} (\delta_{\lambda,h} + (1-z)\delta_{\lambda,-h}) \mathbf{q} \cdot \boldsymbol{\varepsilon}_\lambda. \quad (16)$$

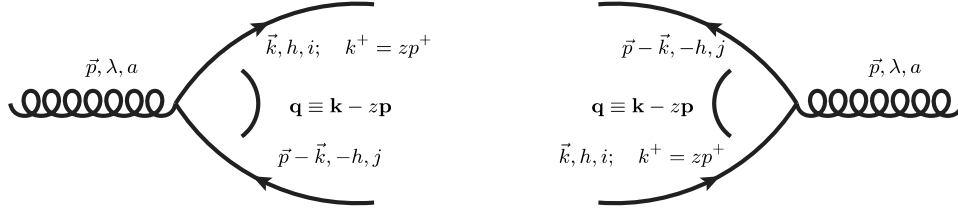


FIG. 2: Left: Gluon splitting vertex into quark-antiquark pair,  $A_{\lambda,h}^{a;j,i}(\mathbf{q}, z)$  Eq. (17). Right: Quark-antiquark annihilation vertex into gluon  $A_{\lambda,h}^{i;j;a}(\mathbf{q}, z)$  Eq. (18).

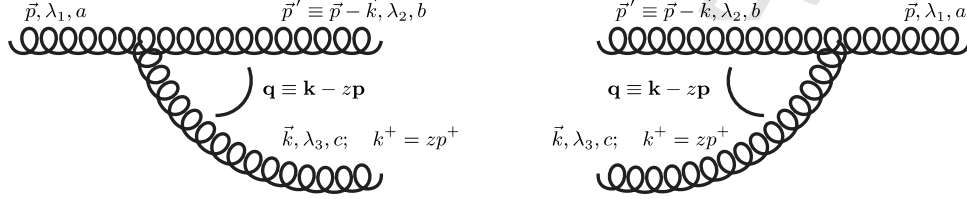


FIG. 3: Left: Gluon splitting vertex  $\Gamma_{\lambda_1;\lambda_2,\lambda_3}^{a;b,c}(\mathbf{q}, z)$  Eq. (20), where  $a, b, c$  are the gluon colors and  $\lambda_1, \lambda_2, \lambda_3$  gluon helicities. Right: Gluon merging vertex  $\Gamma_{\lambda_2,\lambda_3;\lambda_1}^{b,c;a}(\mathbf{q}, z)$  Eq. (21).

Note that in Eqs. (15) and (16)  $\vec{p}'$  is the quark momentum with the smaller plus-component, final state in the emission and initial state in the absorption.

The vertex for a gluon (momentum  $\vec{p}$ ) splitting into a quark (momentum  $\vec{k}$  and helicity  $h$ ) and antiquark ( $\vec{p}'$ , for massless particles the antiquark has helicity  $-h$ ) is (see Fig. 2 left):

$$A_{\lambda,h}^{a;j,i}(\mathbf{q}, z) = -gt_{ij}^a \left[ \bar{u}_h(k) \not{\epsilon}_\lambda(p) v_{-h}(p') \right] = \frac{-2gt_{ij}^a}{\sqrt{z(1-z)}} (z\delta_{\lambda,h} - (1-z)\delta_{\lambda,-h}) \mathbf{q} \cdot \boldsymbol{\varepsilon}_\lambda. \quad (17)$$

The natural momentum of the splitting (corresponding to that of the quark) is  $\mathbf{q} = \mathbf{k} - z\mathbf{p}$ . The quark-antiquark annihilation vertex into a gluon (now with a minus sign for an incoming antiquark) is minus the complex conjugate of Eq. (17),

$$A_{\lambda,h}^{i;j;a}(\mathbf{q}, z) = -gt_{ji}^a \left[ -\bar{v}_{-h}(p') \not{\epsilon}_\lambda^*(p) u_h(k) \right] = \frac{2gt_{ji}^a}{\sqrt{z(1-z)}} (z\delta_{\lambda,h} - (1-z)\delta_{\lambda,-h}) \mathbf{q} \cdot \boldsymbol{\varepsilon}_\lambda^*, \quad (18)$$

see Fig. 2 right. The elementary vertex for  $1 \rightarrow 2$  gluon splitting (Fig. 3 left) is given by<sup>1</sup>

$$\Gamma_{\lambda_1;\lambda_2,\lambda_3}^{a;b,c}(\mathbf{q}, z) = igf^{abc} \left[ (p+k) \cdot \epsilon_{\lambda_2}^*(p') \epsilon_{\lambda_1}(p) \cdot \epsilon_{\lambda_3}^*(k) + (-p'-p) \cdot \epsilon_{\lambda_3}^*(k) \epsilon_{\lambda_1}(p) \cdot \epsilon_{\lambda_2}^*(p') + (-k+p') \cdot \epsilon_{\lambda_1}(p) \epsilon_{\lambda_3}^*(k) \cdot \epsilon_{\lambda_2}^*(p') \right]. \quad (19)$$

In the LC gauge this can be simplified to

$$\Gamma_{\lambda_1;\lambda_2,\lambda_3}^{a;b,c}(\mathbf{q}, z) = -2igf^{abc} \left[ \frac{\mathbf{q} \cdot \boldsymbol{\varepsilon}_{\lambda_2}^*}{1-z} \delta_{\lambda_1,\lambda_3} + \frac{\mathbf{q} \cdot \boldsymbol{\varepsilon}_{\lambda_3}^*}{z} \delta_{\lambda_1,\lambda_2} - \mathbf{q} \cdot \boldsymbol{\varepsilon}_{\lambda_1} \delta_{\lambda_3,-\lambda_2} \right]. \quad (20)$$

Similarly, the  $2 \rightarrow 1$  gluon merging vertex shown in Fig. 3 (right) is the same, except incoming lines change into outgoing ones, which changes the overall sign and  $\boldsymbol{\varepsilon}$  into  $\boldsymbol{\varepsilon}^*$ , i.e. changing (20) to its complex conjugate:

$$\Gamma_{\lambda_2,\lambda_3;\lambda_1}^{b,c;a}(\mathbf{q}, z) = +2igf^{abc} \left[ \frac{\mathbf{q} \cdot \boldsymbol{\varepsilon}_{\lambda_2}}{1-z} \delta_{\lambda_1,\lambda_3} + \frac{\mathbf{q} \cdot \boldsymbol{\varepsilon}_{\lambda_3}}{z} \delta_{\lambda_1,\lambda_2} - \mathbf{q} \cdot \boldsymbol{\varepsilon}_{\lambda_1}^* \delta_{\lambda_3,-\lambda_2} \right]. \quad (21)$$

<sup>1</sup> Changing signs from [38] so that momenta flow from left to right.

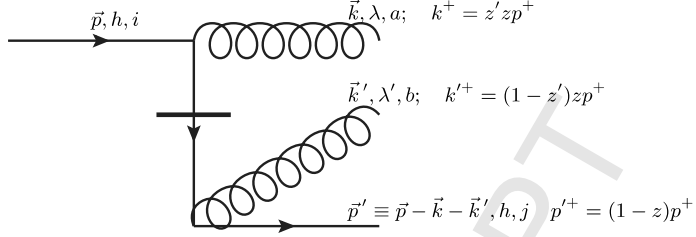


FIG. 4: Instantaneous quark interaction, Eq. (24).

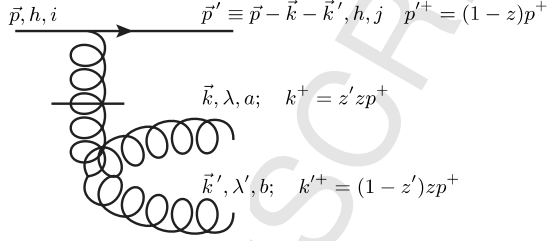


FIG. 5: Instantaneous gluon interaction, Eq. (25)

Incidentally, note that the three interference terms in the squared vertex (20)×(21) give  $\sim 1/(z(1-z)) - 1/z - 1/(1-z) = 0$ , so that the three different polarization terms of the vertex do not interfere in a gluon propagator correction diagram.

#### D. Instantaneous vertices

As we will discuss in more detail below, the instantaneous interaction terms do not contribute to the one-loop gluon emission wave function. They are, however, needed for the 3-particle final states discussed in Sec. III E. We will not present here the full set of instantaneous vertices (see [37]) but merely the ones needed for our calculation. There are three of these.

First, the instantaneous quark diagram Fig. 4 is given by the following matrix element

$$g^2 t_{ji}^b t_{ii}^a \left[ \frac{\bar{u}_h(p') \not{\epsilon}_{\lambda'}^* (k') \gamma^+ \not{\epsilon}_{\lambda}^* (k) u_h(p)}{2(p^+ - k^+)} \right]. \quad (22)$$

The numerator in Eq. (22) simplifies to

$$\not{\epsilon}_{\lambda'}^* (k) \gamma^+ \not{\epsilon}_{\lambda}^* (k) = (\gamma \cdot \epsilon_{\lambda'}^*) \gamma^+ (\gamma \cdot \epsilon_{\lambda}^*) \quad (23)$$

and thus with the parametrization as shown in Fig. 4, we get

$$g^2 t_{ji}^b t_{ii}^a \left[ \bar{u}_h(p') \frac{(\gamma \cdot \epsilon_{\lambda'}^*) \gamma^+ (\gamma \cdot \epsilon_{\lambda}^*)}{2(p^+ - k^+)} u_h(p) \right] = 2g^2 t_{ji}^b t_{ii}^a \frac{\sqrt{1-z}}{1-zz'} \delta_{\lambda, -\lambda'} \delta_{\lambda, h}. \quad (24)$$

Secondly, the instantaneous gluon diagram Fig. 5 is given by the following matrix element

$$-g^2 f^{abc} t_{ji}^c \frac{k'^+ - k^+}{(k^+ + k'^+)^2} \left[ \bar{u}_h(p') \gamma^+ u_h(p) \right] \epsilon_{\lambda}^* \cdot \epsilon_{\lambda'}^* = -2ig^2 f^{abc} t_{ji}^c \frac{\sqrt{1-z}}{z} (1-2z') \delta_{\lambda, -\lambda'}. \quad (25)$$

Similarly, the instantaneous gluon with quark-antiquark pair creation diagram Fig. 6 simplifies to the following matrix element

$$g^2 \frac{t_{ji}^a t_{kl}^a}{(p^+ - p'^+)^2} \left[ \bar{u}_h(p') \gamma^+ u_h(p) \right] \left[ \bar{u}_s(k) \gamma^+ v_{-s}(k') \right] = 4g^2 t_{ji}^a t_{kl}^a \frac{\sqrt{1-z}}{z} \sqrt{z'(1-z')}. \quad (26)$$

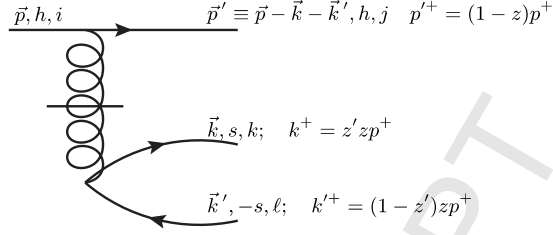


FIG. 6: Instantaneous gluon interaction with quark-antiquark pair creation, Eq. (26).

### E. LCPT rules

The diagrammatic LCPT rules for calculating initial-state light-cone wave functions are following: First, draw all topologically distinct  $x^+$ -ordered diagrams for a given physical process at the desired order in the coupling  $g$ . Second, calculate the perturbative contribution from each diagram according to the following rules:

1. Assign an on-shell four-momentum  $p^\mu$  to each line such that the momentum is flowing from left to right ( $x^+$ -direction)
2. For each elementary vertex (or instantaneous diagram) include the relevant expression from sections II C and II D, and a factor of  $(2\pi)^3 \delta^{(3)}(\vec{p}_{\text{final}} - \vec{p}_{\text{initial}})$ , such that in the vertex the total  $\vec{p} = (p^+, \mathbf{p})$  is conserved.
3. For each intermediate state include a LC energy denominator factor

$$\frac{1}{\sum_m p_{im}^- - \sum_n p_{fn}^- + i0_+} \equiv \frac{1}{\Delta_{if}^- + i0_+}, \quad (27)$$

where the sum  $\sum_m$  runs over all incoming particles present in the initial state  $i$  and the sum  $\sum_n$  over all the particles in the corresponding intermediate state  $f$ .

4. For each internal line, sum over helicities and integrate using  $\int \widetilde{d\mathbf{k}}$  measure for quarks and gluons.
5. Include, if necessary, a standard symmetry factor  $1/S$  which takes care of the possible permutations of fields, a factor  $(-1)$  for quark loops and for quark lines beginning and ending at the initial state.

Three different kinds of divergences can appear in perturbative calculations: ultraviolet, collinear and soft. In order to keep a maximally transparent physical interpretation of the nature of these divergences, we will regularize all three of them separately. Ultraviolet (UV) divergences appear from loop (or final state phase space) integrals over transverse momenta. These will be regulated by performing transverse momentum integrals in  $2 - 2\varepsilon$  transverse dimensions, see Appendix A. Since QCD is a renormalizable theory, all UV divergences can be removed by a renormalization of the parameters of the theory. For massless quarks there is only one such parameter: the coupling constant  $g$ . All UV divergences must therefore disappear with coupling constant renormalization. Collinear divergences appear in the limit of small transverse momentum. Depending on the physical process, these will either cancel between real and virtual terms, or be absorbed into DGLAP-evolution of parton distributions or fragmentation functions (see e.g. [41]). To keep these separate from the UV divergences we will here regulate them by inserting a mass regulator  $\lambda_g$  when needed. The third kind of divergence is the soft one, appearing in the limit of zero longitudinal momentum. In the physical context of high energy scattering these need to be absorbed into small- $x$  renormalization group evolution of scattering amplitudes, at one loop in terms of the BK equation [42, 43]. These will be regulated with a cutoff in longitudinal momentum, where all longitudinal momenta are assumed to be greater than a cutoff parameter  $\alpha$  times  $p^+$ ; the longitudinal momentum of the incoming particle. A technical disadvantage of LCPT compared to covariant perturbation theory with explicit rotational symmetry is that these divergences appear separately, and can mix in unphysical ways in intermediate stages of the calculation. The benefit gained from the associated extra work, however, is that the different physics (running coupling, DGLAP evolution and BK evolution) is explicit in the calculation.

Although transverse integrals are performed in  $2 - 2\varepsilon$  dimensions, we will work in an explicit helicity basis, where quarks and gluons both have exactly 2 helicity states. Thus regularization scheme corresponds to the four dimensional helicity (FDH) scheme [39, 40]. The elementary vertices depend on scalar products between 2-dimensional polarization vectors and  $2 - 2\varepsilon$ -dimensional internal momenta, whose consistent treatment requires care. The precise



implementation of the FDH scheme requires that one first performs the momentum integrations, leaving a result that only involves scalar products between polarization vectors. These can then be evaluated in 2 dimensions together with the polarization sum. At higher loop orders than considered here, the FDH scheme would break the unitarity of the theory (see [44, 45]). However, the FDH scheme is much simpler for calculations, in particular for LCPT where one of the central features of the theory is that one is working with physical degrees of freedom, i.e. on-shell particles in explicit helicity eigenstates. For an example of a recent LCPT loop calculation in conventional dimensional regularization see [27].

### F. Fock state decomposition and light cone wave function

In this paper, our object of interest is not directly a scattering amplitude, but the light cone wave function. This concept is particularly useful in the context of scattering off an external classical potential in the high energy limit [2]; this is precisely the situation in dilute-dense scattering processes in the CGC framework.

We want to express the full physical incoming particle state (a quark, in the case of this paper) as a simultaneous perturbative and Fock state decomposition in terms of the “bare” eigenstates of the noninteracting Hamiltonian. This expansion has the usual form of the “old-fashioned” textbook quantum mechanical perturbation theory, which we write as

$$|\Psi\rangle_{\text{int}} = |\Psi\rangle + \sum_{n_1} \frac{|n_1\rangle\langle n_1|H|\Psi\rangle}{\Delta_{1\Psi}^-} + \sum_{n_1, n_2} \frac{|n_2\rangle\langle n_2|H|n_1\rangle\langle n_1|H|\Psi\rangle}{\Delta_{2\Psi}^- \Delta_{1\Psi}^-} + \dots \quad (28)$$

It is convenient to separate [2] from this sum the terms where an intermediate state  $|n_i\rangle$  is proportional to the state  $|\Psi\rangle$  and absorb them into a (re)normalization of the LO term in the expansion

$$|\Psi\rangle_{\text{int}} = \sqrt{Z_\Psi} \left[ |\Psi\rangle + \sum'_{n_1} \frac{|n_1\rangle\langle n_1|H|\Psi\rangle}{\Delta_{1\Psi}^-} + \sum'_{n_1, n_2} \frac{|n_2\rangle\langle n_2|H|n_1\rangle\langle n_1|H|\Psi\rangle}{\Delta_{2\Psi}^- \Delta_{1\Psi}^-} + \dots \right] \quad (29)$$

where  $\sum'$  means that intermediate states proportional to  $|\Psi\rangle$  are excluded from the sum. The incoming state renormalization  $Z_\Psi$  can be calculated either directly by calculating the incoming particle propagator correction diagrams or from the normalization requirement

$$\text{int}\langle\Psi|\Psi\rangle_{\text{int}} = \langle\Psi|\Psi\rangle, \quad (30)$$

which leads to

$$Z_\Psi^{-1} = 1 + \frac{1}{\langle\Psi|\Psi\rangle} \sum_n' \frac{|\langle n|H|\Psi\rangle|^2}{(\Delta_{n\Psi}^-)^2} + \dots \quad (31)$$

Here note that the one particle state is normalized to  $2p^+(2\pi)^3\delta^3(0)$ , whereas the matrix element  $\langle n|H|\Psi\rangle$  has a factor  $(2\pi)^3\delta^3(0)$ , so there is effectively a factor  $1/(2p^+)$  in the normalization compared to the calculation of the propagator correction diagrams when using this formula to calculate  $Z_\Psi$ . Note also that in LCPT the wave function renormalization constant can depend on the longitudinal momentum of the incoming particle [9–14].

Specifically for the case of one incoming quark, the decomposition is

$$|q(\vec{p})\rangle_{\text{int}} = \sqrt{Z_q(p^+)} \left[ |q(\vec{p})\rangle + \int \widetilde{d\vec{p}'} \widetilde{d\vec{q}} (2\pi)^3 \delta^3(\vec{p} - \vec{p}' - \vec{q}) \psi^{q \rightarrow qg}(\vec{p}, \vec{q}) |q(\vec{p}')g(\vec{q})\rangle \right. \\ \left. + \frac{1}{\sqrt{2}} \int \widetilde{d\vec{p}'} \widetilde{d\vec{q}} \widetilde{d\vec{k}} (2\pi)^3 \delta^3(\vec{p} - \vec{p}' - \vec{q} - \vec{k}) \left[ \psi^{q \rightarrow qgg}(\vec{p}, \vec{q}) |q(\vec{p}')g(\vec{q})g(\vec{k})\rangle + \psi^{q \rightarrow qq\bar{q}}(\vec{p}, \vec{q}) |q(\vec{p}')q(\vec{q})\bar{q}(\vec{k})\rangle \right] + \dots \right]. \quad (32)$$

The expression (32) defines the light cone wave functions  $\psi^{q \rightarrow qg}$ ,  $\psi^{q \rightarrow qgg}$ ,  $\psi^{q \rightarrow qq\bar{q}}$  etc, including the symmetry factor  $1/\sqrt{2}$  for Fock states containing two identical particles. At leading order, their power counting in the QCD coupling is  $\psi^{q \rightarrow qg} \sim g$ ;  $\psi^{q \rightarrow qgg} \sim \psi^{q \rightarrow qq\bar{q}} \sim g^2$ . We will in this paper compute the one-loop (i.e.  $\sim g^3$ ) contribution to one-gluon emission wave function  $\psi^{q \rightarrow qg}$ . For explicitness and reference, we will also write down the tree level  $\sim g^2$  light cone wave functions for the wave functions with three particle final states  $\psi^{q \rightarrow qgg}$ ,  $\psi^{q \rightarrow qq\bar{q}}$ .

The expansion (32) is the one that one would actually use in the calculation of scattering off an external potential. The wave function  $\psi^{q \rightarrow qg}$  is, however, not straightforward to compare to a one-loop  $q \rightarrow qg$  vertex in covariant

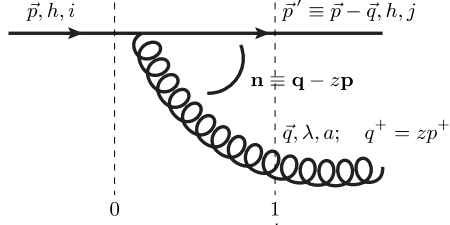


FIG. 7: Gluon emission at leading order. Momentum is conserved  $\vec{p} = \vec{p}' + \vec{q}$ , and the momentum fraction and natural transverse momentum for the emitted gluon are  $z = q^+/p^+$  and  $\mathbf{n} = \mathbf{q} - z\mathbf{p}$ .

perturbation theory, e.g. to see that all the UV divergences can be absorbed into a renormalization of the coupling constant. In particular,  $\psi^{q \rightarrow qg}$  does not include incoming propagator correction diagrams (they are absorbed into the normalization  $\sqrt{Z_q(p^+)}$ ), but does include the final state propagator correction diagrams (diagrams (a), (b) and (c) in Figs. 8, 9 and 10). To make contact with covariant perturbation theory, one should define renormalized free particle states  $|q(\vec{p})\rangle_R = \sqrt{Z_q(p^+)}|q(\vec{p})\rangle$ ,  $|g(\vec{k})\rangle_R = \sqrt{Z_g(k^+)}|g(\vec{k})\rangle$ . In terms of these we have

$$\sqrt{Z_q(p^+)}\psi^{q \rightarrow qg}(\vec{p}, \vec{q})|q(\vec{p}')g(\vec{q})\rangle = \frac{\sqrt{Z_q(p^+)}}{\sqrt{Z_q(p'^+)Z_g(q^+)}}\psi^{q \rightarrow qg}(\vec{p}, \vec{q})|q(\vec{p}')g(\vec{q})\rangle_R, \quad (33)$$

where the denominator  $\sqrt{Z_q(p'^+)Z_g(q^+)}$  cancels half of the outgoing particle propagator correction diagrams included in  $\psi^{q \rightarrow qg}$ , and the numerator  $\sqrt{Z_q(p^+)}$  introduces half of the incoming particle renormalizations that are absent from  $\psi^{q \rightarrow qg}$ . The combination

$$\frac{\sqrt{Z_q(p^+)}}{\sqrt{Z_q(p'^+)Z_g(q^+)}}\psi^{q \rightarrow qg}(\vec{p}, \vec{q}) \quad (34)$$

corresponds to the covariant theory one-particle irreducible vertex multiplied by the wave function renormalization constants. This is the quantity appearing in a cross section calculation in covariant theory and the whose UV-divergences can be absorbed into a renormalization of the coupling constant. This will be explicitly checked in Sec. IV.

### III. DIAGRAM CALCULATIONS

#### A. Leading order gluon emission

Using the LCPT rules, the leading order (LO) gluon emission wave function shown in Fig. 7 (without overall momentum conservation) can be written in the form

$$\psi_{\text{LO}}^{q \rightarrow qg}(\mathbf{n}, z) = \frac{V_{\lambda, h}^{i, j, a}(\mathbf{n}, z)}{\Delta_{01}^-}, \quad (35)$$

where the vertex function  $V_{\lambda, h}^{i, j, a}(\mathbf{n}, z)$  is defined in Eq. (15) and the LC energy denominator  $\Delta_{01}^- = p^- - p'^- - k^-$  simplifies to

$$\Delta_{01}^- = \frac{-1}{2p^+} \frac{\mathbf{n}^2}{z(1-z)}. \quad (36)$$

Thus the LO gluon emission wave function is given by

$$\psi_{\text{LO}}^{q \rightarrow qg}(\mathbf{n}, z) = 4p^+ g t_{ji}^a \sqrt{1-z} \left[ \delta_{\lambda, h} + (1-z)\delta_{\lambda, -h} \right] \frac{\mathbf{n} \cdot \boldsymbol{\epsilon}_\lambda^*}{\mathbf{n}^2}. \quad (37)$$

## B. Wave function renormalization and propagator corrections

### 1. Quark wave function renormalization $Z_q(p^+)$ to order $g^2$

As discussed in Sec. II F, the propagator corrections for initial state particles are not considered a part of the wave function. We will therefore calculate the quark wave function renormalization coefficient using the normalization condition for the one quark state, Eq. (31). At the order  $g^2$  for  $Z_q(p^+)$  we only need to consider the  $qg$  state, for which the coefficient has just been calculated in Eq. (37). We get

$$Z_q^{-1}(p^+) = 1 + \frac{1}{\langle q(\vec{p})|q(\vec{p})\rangle} \int \widetilde{dqd\vec{k}} \frac{|\langle q(\vec{q})g(\vec{k})|H|q(\vec{p})\rangle|^2}{(\Delta^-)^2}, \quad (38)$$

where  $\Delta^- = p^- - k^- - p'^-$  and

$$\langle q(\vec{p})|q(\vec{p})\rangle = 2p^+(2\pi)^3\delta^{(3)}(\vec{0}) \quad (39)$$

and

$$\frac{\langle q(\vec{q})g(\vec{k})|H|q(\vec{p})\rangle}{\Delta^-} = (2\pi)^3\delta^{(3)}(\vec{p} - \vec{q} - \vec{k})\psi_{\text{LO}}^{g \rightarrow qg}(\mathbf{k} - z\mathbf{p}, z = k^+/p^+). \quad (40)$$

Thus Eq. (38) simplifies to

$$Z_q^{-1}(p^+) = 1 + \frac{1}{2p^+} \int \widetilde{dqd\vec{k}} (2\pi)^3\delta^{(3)}(\vec{p} - \vec{q} - \vec{k}) \left| \psi_{\text{LO}}^{g \rightarrow qg}(\mathbf{k} - z\mathbf{p}, z = k^+/p^+) \right|^2, \quad (41)$$

where the phase-space measure is

$$\int \widetilde{dqd\vec{k}} (2\pi)^3\delta^{(3)}(\vec{p} - \vec{q} - \vec{k}) = \int_0^{p^+} \frac{dk^+}{2k^+} \int \frac{d^2\mathbf{k}}{(2\pi)^3} \frac{1}{2q^+} = \frac{\mu^{2-d_\perp}}{8\pi p^+} \int_0^1 \frac{dz}{z(1-z)} \int \frac{d^{d_\perp}\mathbf{k}}{(2\pi)^{d_\perp}}. \quad (42)$$

Regulating the collinear IR-divergence with a mass parameter  $\lambda_m > 0$ , which is chosen in such a way that the particle carrying  $zp^+$  amount of longitudinal momentum is regulated (in this case the gluon with momentum  $\vec{k}$ ), we get

$$\Delta^- = \frac{-1}{2p^+z(1-z)} \left[ (\mathbf{k} - z\mathbf{p})^2 + (1-z)\lambda_m^2 \right], \quad (43)$$

and substituting Eq. (37) into Eq. (41) leads to

$$Z_q^{-1}(p^+) = 1 + \frac{g^2}{\pi} t_{ji}^a t_{ij}^a \int_0^1 \frac{dz}{z} \left[ \delta_{\lambda,h} + (1-z)^2 \delta_{\lambda,-h} \right] \mu^{2-d_\perp} \int \frac{d^{d_\perp}\mathbf{k}}{(2\pi)^{d_\perp}} \frac{(\mathbf{k} - z\mathbf{p}) \cdot \boldsymbol{\varepsilon}_\lambda^* (\mathbf{k} - z\mathbf{p}) \cdot \boldsymbol{\varepsilon}_\lambda}{[(\mathbf{k} - z\mathbf{p})^2 + (1-z)\lambda_m^2]^2} \quad (44)$$

$$= 1 + \frac{g^2 C_F}{\pi} \int_0^1 \frac{dz}{z} \left[ 1 + (1-z)^2 \right] \mu^{2-d_\perp} \int \frac{d^{d_\perp}\mathbf{m}}{(2\pi)^{d_\perp}} \frac{\mathbf{m}^2/d_\perp}{[\mathbf{m}^2 + (1-z)\lambda_m^2]^2}, \quad (45)$$

where we have changed the integration variable to  $\mathbf{m} = \mathbf{k} - z\mathbf{p}$  with  $m^i m^j$  equivalent to  $(\mathbf{m}^2/d_\perp)\delta^{ij}$  under the integral, and summed over the internal gluon helicity  $\lambda$  and the colors  $j$  and  $a$  (but not  $i$  since we are calculating the norm of the state with a particle in the fixed color state  $i$ ). Here we should note that while  $\varepsilon > 0$  regularizes the UV transverse momentum divergence; the longitudinal  $z$  (soft) divergence is an IR one, and would require  $\varepsilon < 0$  to regularize it. However, we want to regularize these soft IR divergences by an explicit cutoff instead. This means that all longitudinal momenta should be larger than  $\alpha p^+$  with  $\alpha > 0$ . Regulating the soft IR-divergence in  $z \rightarrow 0$  by a cutoff with  $\alpha < z < 1$  and applying Eq. (A5) with  $d_\perp = 2 - 2\varepsilon$ , the quark wave function renormalization constant in Eq. (44) becomes

$$Z_q^{-1}(p^+) = 1 + \frac{g^2 C_F}{8\pi^2} \left[ \left( \frac{1}{\varepsilon_{\text{MS}}} + \log \frac{\mu^2}{\lambda_m^2} \right) \left( -\frac{3}{2} - 2\log(\alpha) \right) - \frac{5}{4} + \frac{\pi^2}{3} \right] \quad (46)$$

i.e.

$$Z_q(p^+) = 1 + \frac{g^2 C_F}{8\pi^2} \left[ \left( \frac{1}{\varepsilon_{\text{MS}}} + \log \frac{\mu^2}{\lambda_m^2} \right) \left( \frac{3}{2} + 2\log(\alpha) \right) + \frac{5}{4} - \frac{\pi^2}{3} \right]. \quad (47)$$

Note that if also the collinear IR divergence was also regulated in the FDH scheme with  $\varepsilon < 0$  in stead of the mass  $\lambda_m$ , we would have  $Z_q = 1$ .

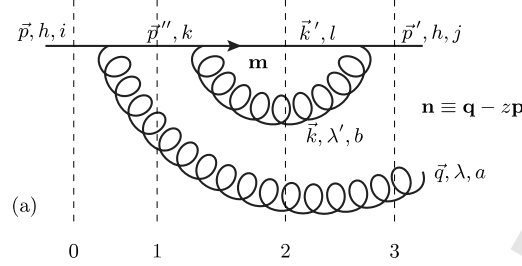


FIG. 8: Contribution to gluon emission from final state quark propagator correction, diagram (a), with energy denominator intermediate states and kinematics. Momentum conservation:  $\vec{p} = \vec{p}' + \vec{q}$  and  $\vec{p}' = \vec{k}' + \vec{k}$ . The momentum fraction and natural momentum scale for the emitted gluon are  $z = q^+ / p^+$  and  $\mathbf{n} = \mathbf{q} - z\mathbf{p}$ . The momentum fraction for the gluon in the loop is  $z' = k^+ / p^+$ , i.e.  $k^+ = z'(1-z)p^+$  and the natural momentum  $\mathbf{m} = \mathbf{k} - z'\mathbf{p}'$ .

## 2. Final state quark wave function correction

We now look at quark wave function in a different way, by an explicit calculation of the final state quark propagator correction diagram. The renormalizability of the theory requires that the UV-divergent part of the final state quark propagator correction matches the wave function renormalization (47), but as we will see this is not the case for the UV-finite parts.

The contribution to final state quark wave function correction in Fig. 8 is given by

$$\psi_{(a)}^{q \rightarrow qg} = \int \widetilde{d\vec{p}''} \widetilde{d\vec{k}'} \widetilde{d\vec{k}} (2\pi)^3 \delta^3(\vec{p}'' - \vec{k} - \vec{k}') (2\pi)^3 \delta^3(\vec{p}' - \vec{k} - \vec{k}') \frac{V_{\lambda,h}^{i;k,a}(\mathbf{n}, z) V_{h,\lambda'}^{k;l,b}(\mathbf{m}, z') V_{h,\lambda'}^{l,b;j}(\mathbf{m}, z')}{\Delta_{01}^- \Delta_{02}^- \Delta_{03}^-}, \quad (48)$$

where the LC energy denominators are

$$\Delta_{01}^- = \Delta_{03}^- = \frac{-1}{2p^+} \frac{\mathbf{n}^2}{z(1-z)} \quad (49)$$

$$\Delta_{02}^- = \frac{-1}{2p^+} \left[ \frac{\mathbf{n}^2}{z(1-z)} + \frac{1}{1-z} \frac{\mathbf{m}^2}{z'(1-z')} \right], \quad (50)$$

and the phase space simplifies to

$$\begin{aligned} \int \widetilde{d\vec{p}''} \widetilde{d\vec{k}'} \widetilde{d\vec{k}} (2\pi)^3 \delta^3(\vec{p}'' - \vec{k} - \vec{k}') (2\pi)^3 \delta^3(\vec{p}' - \vec{k} - \vec{k}') &= \int_0^{p^+} \frac{dk^+}{2k^+} \int \frac{d^2\mathbf{k}}{(2\pi)^3} \frac{1}{2p''^+ 2k'^+} \\ &= \frac{\mu^{2-d_\perp}}{16\pi(p^+)^2} \int_0^1 \frac{dz'}{z'(1-z')(1-z)^2} \int \frac{d^{d_\perp}\mathbf{m}}{(2\pi)^{d_\perp}}. \end{aligned} \quad (51)$$

The product of vertices at the end of the loop (summing over internal polarization  $\lambda'$ ) give

$$\begin{aligned} V_{h,\lambda'}^{k;l,b}(\mathbf{m}, z') V_{h,\lambda'}^{l,b;j}(\mathbf{m}, z') &= \frac{4g^2 t_j^b t_\ell^b}{(z')^2 (1-z')} \left[ \delta_{h,\lambda'} + (1-z') \delta_{h,-\lambda'} \right] \left[ \delta_{h,\lambda'} + (1-z') \delta_{h,-\lambda'} \right] \mathbf{m} \cdot \boldsymbol{\varepsilon}_{\lambda'}^* \cdot \mathbf{m} \cdot \boldsymbol{\varepsilon}_{\lambda'} \\ &= \frac{4g^2 C_F \delta_{jk}}{(z')^2 (1-z')} \frac{\mathbf{m}^2}{d_\perp} \left[ 1 + (1-z')^2 \right]. \end{aligned} \quad (52)$$

Recalling that our FDH scheme requires us to first compute the momentum integral, we have here in a slight abuse of notation anticipated this by replacing  $m^i m^j$  with  $\mathbf{m}^2 \delta^{ij} / d_\perp$ , which is true under the integration over  $\mathbf{m}$ . This leaves the polarization vectors in the structure  $\boldsymbol{\varepsilon}_{\lambda'}^* \cdot \boldsymbol{\varepsilon}_{\lambda'} = 1$  (no sum over  $\lambda'$ ). This has already been used on the second line, although strictly speaking the polarization sum is performed only after the  $\mathbf{m}$ -integral. Putting things together and performing the  $\mathbf{m}$ -integral we have

$$\psi_{(a)}^{q \rightarrow qg} = \psi_{\text{LO}}^{q \rightarrow qg}(\mathbf{n}, z) \left( \frac{g^2 C_F}{8\pi^2} \right) \left( -\frac{\Gamma(\varepsilon)}{(1-\varepsilon)(4\pi)^{-\varepsilon}} \right) \left[ z \frac{\mu^2}{\mathbf{n}^2} \right]^\varepsilon \int_0^1 \frac{dz'}{(z'(1-z'))^\varepsilon} \frac{1}{z'} \left[ 1 + (1-z')^2 \right]. \quad (53)$$

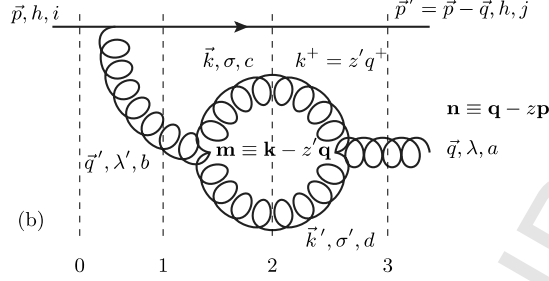


FIG. 9: Gluon polarization diagram (b) with intermediate states for the energy denominators and kinematics. Momentum conservation dictates:  $\vec{p} = \vec{p}' + \vec{q}$  and  $\vec{q}' = \vec{k} + \vec{k}'$ . The momentum fraction and natural momentum scale for the emitted gluon are  $z = q^+/p^+$  and  $\mathbf{n} = \mathbf{q} - z\mathbf{p}$ . The momentum fraction for the gluon in the loop is  $z' = k^+/q^+$ , i.e.  $k^+ = zz'p^+$ , and the natural momentum  $\mathbf{m} = \mathbf{k} - z'\mathbf{q}$ .

Regulating the IR-divergence  $z' \rightarrow 0$  by a cutoff  $z' > \alpha/(1-z)$  we get the contribution

$$\begin{aligned} \psi_{(a)}^{q \rightarrow qg} = \psi_{\text{LO}}^{q \rightarrow qg}(\mathbf{n}, z) & \left( \frac{g^2 C_F}{8\pi^2} \right) \left\{ \left[ \frac{1}{\varepsilon_{\text{MS}}} + \log \left( \frac{z\mu^2}{\mathbf{n}^2} \right) \right] \left( \frac{3}{2} - 2 \log \left( \frac{1-z}{\alpha} \right) \right) \right. \\ & \left. + \frac{27}{6} - \frac{\pi^2}{3} - 2 \log \left( \frac{1-z}{\alpha} \right) - \log^2 \left( \frac{1-z}{\alpha} \right) \right\}. \end{aligned} \quad (54)$$

Note that the UV-divergent parts are the same as for the quark wave function renormalization constant (47), but the finite parts are different.

### 3. Gluon propagator corrections

Next we calculate the contributions to the gluon emission wave function  $\psi^{q \rightarrow qg}$  from the final state gluon propagator correction diagrams, the gluon loop (b) shown in Fig. 9 and the quark loop (c) in Fig. 10.

#### Gluon polarization diagram (b)

The contribution from diagram (b), including the symmetry factor 1/2 for two interchangeable gluon lines, is

$$\psi_{(b)}^{q \rightarrow qg} = \frac{1}{2} \int \widetilde{dk} \widetilde{dq}' \widetilde{dk}' (2\pi)^3 \delta^3(\vec{q}' - \vec{k}' - \vec{k}) (2\pi)^3 \delta^3(\vec{q} - \vec{k}' - \vec{k}) \frac{V^{ij,b}(\mathbf{n}, z)}{\Delta_{01}^- \Delta_{02}^- \Delta_{03}^-} \Gamma_{\lambda'; \sigma\sigma'}^{cd;a}(\mathbf{m}, z') \Gamma_{\sigma\sigma'; \lambda}^{b;cd}(\mathbf{m}, z') \quad (55)$$

with the vertices given in Eqs. (15), (20) and (21). The phase space measure simplifies to

$$\begin{aligned} \int \widetilde{dk} \widetilde{dq}' \widetilde{dk}' (2\pi)^3 \delta^3(\vec{q}' - \vec{k}' - \vec{k}) (2\pi)^3 \delta^3(\vec{q} - \vec{k}' - \vec{k}) &= \int_0^{q^+} \frac{dk^+}{2k^+} \int \frac{d^2\mathbf{k}}{(2\pi)^3} \frac{1}{2q'^+ 2k'^+} \\ &= \frac{\mu^{2-d_\perp}}{16\pi(p^+)^2} \int_0^1 \frac{dz'}{z^2 z'(1-z')} \int \frac{d^{d_\perp} \mathbf{m}}{(2\pi)^{d_\perp}}, \end{aligned} \quad (56)$$

and the LC energy denominators are given by

$$\Delta_{01}^- = \Delta_{03}^- = \frac{-1}{2p^+} \frac{\mathbf{n}^2}{z(1-z)} \quad (57)$$

$$\Delta_{02}^- = \frac{-1}{2p^+} \left[ \frac{\mathbf{n}^2}{z(1-z)} + \frac{1}{z} \frac{\mathbf{m}^2}{z'(1-z')} \right]. \quad (58)$$

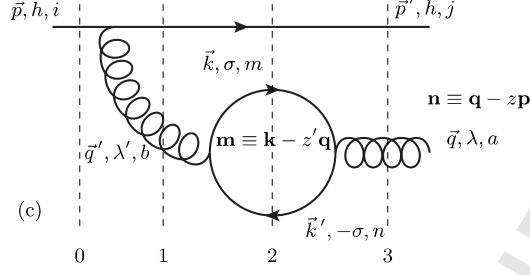


FIG. 10: Gluon polarization diagram (c) with the same energy denominators and kinematics as in Fig. 9.

The product of two gluon vertices (summed over internal polarizations  $\sigma$  and  $\sigma'$ ) in Eq. (55) simplifies to

$$\begin{aligned} \Gamma_{\sigma\sigma';\lambda}^{cd;a}(\mathbf{m}, z') \Gamma_{\lambda';\sigma\sigma'}^{b;cd}(\mathbf{m}, z') &= 4g^2 f^{cda} f^{bcd} \left[ \mathbf{m}^2 \delta_{\lambda,\lambda'} \left( \frac{1}{(1-z')^2} + \frac{1}{z'^2} \right) + 2(\mathbf{m} \cdot \boldsymbol{\varepsilon}_{\lambda'}) (\mathbf{m} \cdot \boldsymbol{\varepsilon}_{\lambda}^*) \right] \\ &= 4g^2 C_A \delta^{ab} \mathbf{m}^2 \delta_{\lambda,\lambda'} \left[ \frac{1}{(1-z')^2} + \frac{1}{z'^2} + \frac{2}{d_{\perp}} \right], \end{aligned} \quad (59)$$

where, in the first line, the factor 2 comes from summing over two polarization states for the gluon in the loop. Putting everything together gives

$$\psi_{(b)}^{q \rightarrow qg} = \psi_{\text{LO}}^{q \rightarrow qg}(\mathbf{n}, z) \left( \frac{g^2 C_A}{2\pi} \right) \left( \frac{1-z}{\mathbf{n}^2} \right) \int_0^1 dz' \left[ \frac{1}{(1-z')^2} + \frac{1}{z'^2} + \frac{2}{d_{\perp}} \right] \mu^{2-d_{\perp}} \int \frac{d^{d_{\perp}} \mathbf{m}}{(2\pi)^{d_{\perp}}} \frac{\mathbf{m}^2}{\left[ \mathbf{m}^2 + \frac{z'(1-z')}{1-z} \mathbf{n}^2 \right]}, \quad (60)$$

and performing the  $\mathbf{m}$ -integration we obtain

$$\psi_{(b)}^{q \rightarrow qg} = \psi_{\text{LO}}^{q \rightarrow qg}(\mathbf{n}, z) \left( \frac{g^2 C_A}{8\pi^2} \right) \left( -\frac{\Gamma(\varepsilon)}{(4\pi)^{-\varepsilon}} \right) \left[ (1-z) \frac{\mu^2}{\mathbf{n}^2} \right]^{\varepsilon} \int_0^1 \frac{dz'}{(z'(1-z'))^{\varepsilon}} \left[ \frac{z'}{1-z'} + \frac{1-z'}{z'} + \frac{z'(1-z')}{1-\varepsilon} \right]. \quad (61)$$

Regulating the soft  $z' \rightarrow 0$  and  $z' \rightarrow 1$  divergences by a cutoff  $\alpha/z < z' < 1 - \alpha/z$ , the above integral becomes

$$\psi_{(b)}^{q \rightarrow qg} = \psi_{\text{LO}}^{q \rightarrow qg}(\mathbf{n}, z) \left( \frac{g^2 C_A}{8\pi^2} \right) \left\{ \left[ \frac{1}{\varepsilon \overline{\text{MS}}} + \log \left( \frac{(1-z)\mu^2}{\mathbf{n}^2} \right) \right] \left( \frac{11}{6} - 2 \log \left( \frac{z}{\alpha} \right) \right) + \frac{32}{9} - \frac{\pi^2}{3} - \log^2 \left( \frac{z}{\alpha} \right) \right\}. \quad (62)$$

*Gluon polarization diagram (c)*

The contribution from diagram (c) is

$$\psi_{(c)}^{q \rightarrow qg} = (-1) N_F \int \widetilde{dk} \widetilde{dq}' \widetilde{dk}' (2\pi)^3 \delta^3(\vec{q}' - \vec{k}' - \vec{k}) (2\pi)^3 \delta^3(\vec{q} - \vec{k}' - \vec{k}) \frac{V_{\lambda',h}^{i;jb}(\mathbf{n}, z)}{\Delta_{01} \Delta_{02} \Delta_{03}} A_{\lambda',\sigma}^{b;m,n}(\mathbf{m}, z') A_{\lambda,\sigma}^{m;n;a}(\mathbf{m}, z'), \quad (63)$$

where  $N_F$  is the number of quark flavours, the factor  $(-1)$  reflects the presence of a quark loop, and the gluon splitting  $A_{\lambda',\sigma}^{b;m,n}(\mathbf{m}, z')$  and quark-antiquark annihilation  $A_{\lambda,\sigma}^{m;n;a}(\mathbf{m}, z')$  vertices are given in Eqs. (17) and (18).

The LC energy denominators and phase space are same as in diagram (b). The product of gluon quark-antiquark vertices in Eq. (63), summed over internal polarization  $\sigma$ , simplifies to

$$\begin{aligned} A_{\lambda',\sigma}^{b;m,n}(\mathbf{m}, z') A_{\lambda,\sigma}^{m;n;a}(\mathbf{m}, z') &= \frac{-4g^2 \text{Tr}(t^a t^b)}{z'(1-z')} \left[ z' \delta_{\lambda',\sigma} - (1-z') \delta_{\lambda',-\sigma} \right] \left[ z' \delta_{\lambda,\sigma} - (1-z') \delta_{\lambda,-\sigma} \right] \mathbf{m} \cdot \boldsymbol{\varepsilon}_{\lambda'} \mathbf{m} \cdot \boldsymbol{\varepsilon}_{\lambda}^* \\ &= \frac{-4g^2 T_F \delta^{ab}}{z'(1-z')} \frac{\mathbf{m}^2}{d_{\perp}} \delta_{\lambda',\lambda} \left[ 2z'(z'-1) + 1 \right], \end{aligned} \quad (64)$$

where  $T_F = 1/2$ . Substituting Eq. (64) into Eq. (63) and following the same steps as in diagram (b), we obtain an IR-safe expression for the diagram (c)

$$\psi_{\text{LO}}^{q \rightarrow qg}(\mathbf{n}, z) \left( \frac{g^2 T_F N_F}{8\pi^2} \right) \left( -\frac{\Gamma(\varepsilon)}{(1-\varepsilon)(4\pi)^{-\varepsilon}} \right) \left[ (1-z) \frac{\mu^2}{\mathbf{n}^2} \right]^\varepsilon \int_0^1 \frac{dz'}{(z'(1-z'))^\varepsilon} \left[ 2z'(z'-1) + 1 \right], \quad (65)$$

which simplifies to

$$\psi_{(c)}^{q \rightarrow qg} = \psi_{\text{LO}}^{q \rightarrow qg}(\mathbf{n}, z) \left( -\frac{g^2 T_F N_F}{8\pi^2} \right) \left\{ \left[ \frac{1}{\varepsilon_{\overline{\text{MS}}}} + \log \left( \frac{(1-z)\mu^2}{\mathbf{n}^2} \right) \right] \frac{2}{3} + \frac{19}{9} \right\}. \quad (66)$$

Adding the contributions from Eqs. (62) and (66) together, the final state gluon propagator corrections in the FDH scheme take the form:

$$\psi_{(b)}^{q \rightarrow qg} + \psi_{(c)}^{q \rightarrow qg} = \psi_{\text{LO}}^{q \rightarrow qg}(\mathbf{n}, z) \left\{ 1 + \frac{g^2}{8\pi^2} \left\{ \left[ \frac{1}{\varepsilon_{\overline{\text{MS}}}} + \log \left( \frac{(1-z)\mu^2}{\mathbf{n}^2} \right) \right] \left( \frac{11C_A}{6} - \frac{2T_F N_F}{3} - 2C_A \log \left( \frac{z}{\alpha} \right) \right) + C_A \left( \frac{32}{9} - \frac{\pi^2}{3} - \log^2 \left( \frac{z}{\alpha} \right) \right) - \frac{19T_F N_F}{9} \right\} \right\}. \quad (67)$$

From this we know that the UV-divergent parts of the gluon wave function renormalization constant are

$$Z_g^{\text{pole}}(zp^+) = 1 + \frac{g^2}{8\pi^2} \frac{1}{\varepsilon_{\overline{\text{MS}}}} \left( \frac{11C_A}{6} - \frac{2T_F N_F}{3} + 2C_A \log \left( \frac{\alpha}{z} \right) \right). \quad (68)$$

The full gluon wave function renormalization constant in the FDH scheme can be calculated in a straightforward manner similarly to the calculation for quarks done in Sec. III B 1. We will not repeat the details here but just quote the result:

$$Z_g(zp^+) = 1 + \frac{g^2}{8\pi^2} \left\{ \left[ \frac{1}{\varepsilon_{\overline{\text{MS}}}} + \ln \frac{\mu^2}{\lambda_m^2} \right] \left( \frac{11C_A}{6} - \frac{2T_F N_F}{3} + 2C_A \log \left( \frac{\alpha}{z} \right) \right) - \left( \frac{5}{36} + \frac{\pi^2}{6} + 2 \ln \frac{\alpha}{z} + \frac{1}{2} \ln^2 \frac{\alpha}{z} \right) C_A - \frac{13T_F N_F}{18} \right\}. \quad (69)$$

Comparing Eqs. (67) and (69) one sees that indeed the UV-divergent parts are the same as in the propagator correction diagrams, but the finite parts are different, as was the case for the quarks.

### C. One loop vertex corrections to gluon emission

Next, we calculate the one loop vertex correction diagrams (d), (e), (f) and (g) shown in Figs. 11-14.

#### Diagram (d)

For diagram (d), with kinematical variables as in Fig. 11, the LC wave function is

$$\psi_{(d)}^{q \rightarrow qg} = \int \widetilde{d\mathbf{k}} \widetilde{d\mathbf{k}'} \widetilde{d\mathbf{k}''} (2\pi)^3 \delta^3(\vec{p} - \vec{k} - \vec{k}') (2\pi)^3 \delta^3(\vec{p}' - \vec{k}'' - \vec{k}) \frac{V_{\lambda',h}^{i;k,b}(\mathbf{m}, z') V_{\lambda,h}^{k;l,a}(\mathbf{h}, \frac{z}{1-z}) V_{\lambda',h}^{l,b;j}(\mathbf{1}, \frac{z'}{1-z'})}{\Delta_{01} \Delta_{02} \Delta_{03}}, \quad (70)$$

where the phase space measure is

$$\int \widetilde{d\mathbf{k}} \widetilde{d\mathbf{k}'} \widetilde{d\mathbf{k}''} (2\pi)^3 \delta^3(\vec{p} - \vec{k} - \vec{k}') (2\pi)^3 \delta^3(\vec{p}' - \vec{k}'' - \vec{k}) = \frac{\mu^{2-d_\perp}}{16\pi(p^+)^2} \int_0^{1-z} \frac{dz'}{z'(1-z')(1-z-z')} \int \frac{d^{d_\perp} \mathbf{m}}{(2\pi)^{d_\perp}} \quad (71)$$

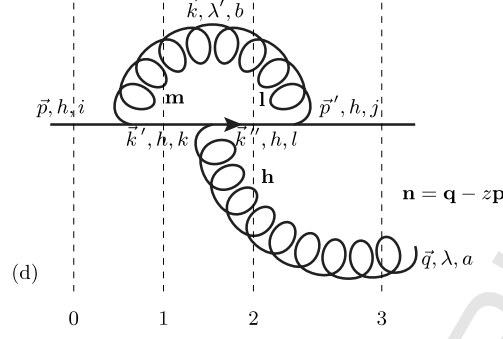


FIG. 11: One loop vertex correction diagram (d) with LC energy denominators and kinematics. Momentum conservation:  $\vec{p} = \vec{k} + \vec{k}'$ ,  $\vec{k}' = \vec{k}'' + \vec{q}$  and  $\vec{p}' = \vec{k}'' + \vec{k}$ . The momentum fraction in first gluon emission is  $z'$ , defined as  $k^+ = z'p^+$  and the natural momentum is  $\mathbf{m} = \mathbf{k} - z'\mathbf{p}$ . In the absorption of the same gluon the momentum fraction is  $k^+/p'^+ = z'/(1-z)$  and the natural momentum  $\mathbf{l} = \mathbf{k} - (z'/(1-z))\mathbf{p}'$ . For the emission of the final state gluon the momentum fraction is  $q^+/k'^+ = z/(1-z')$  and the natural momentum  $\mathbf{h} = \mathbf{q} - (z/(1-z'))\mathbf{k}'$ . The natural momentum for the whole diagram is  $\mathbf{n} = \mathbf{q} - z\mathbf{p}$ . In order to use  $\mathbf{m}$  as the integration variable we need to know that  $\mathbf{l} = \mathbf{m} + (z'/(1-z))\mathbf{n}$  and  $\mathbf{h} = \mathbf{n} + (z/(1-z'))\mathbf{m}$ .

and the LC energy denominators are

$$\Delta_{01}^- = \frac{-1}{2p^+} \frac{\mathbf{m}^2}{z'(1-z')} \quad (72)$$

$$\Delta_{02}^- = \frac{-1}{2p^+} \left[ \frac{\mathbf{n}^2}{z(1-z)} + \frac{\mathbf{l}^2}{z' \left(1 - \frac{z'}{1-z}\right)} \right] \quad (73)$$

$$\Delta_{03}^- = \frac{-1}{2p^+} \frac{\mathbf{n}^2}{z(1-z)}. \quad (74)$$

Putting everything together and using

$$t_{jt}^b t_{ik}^a t_{ki}^b = \left( C_F - \frac{C_A}{2} \right) t_{ji}^a \quad (75)$$

we get

$$\begin{aligned} \psi_{(d)}^{q \rightarrow qg} &= \frac{-2g^3 t_{ji}^a}{\Delta_{03}^-} \left( C_F - \frac{C_A}{2} \right) \frac{\mu^{2-d_\perp}}{\pi} \int_0^{1-z} \frac{dz'}{z'(1-z')(1-z-z')} \int \frac{d^{d_\perp} \mathbf{m}}{(2\pi)^{d_\perp}} \frac{(z')^2 (1-z')(1-\frac{z'}{1-z})}{\mathbf{m}^2 \left[ \mathbf{l}^2 + \frac{z'(1-z-z')\mathbf{n}^2}{z(1-z)^2} \right]} z' \sqrt{1-z'} \\ &\frac{(1-z)}{z' \sqrt{1-\frac{z'}{1-z}}} \frac{(1-z')}{z \sqrt{1-\frac{z}{1-z}}} \left[ \delta_{\lambda',h} + \left(1 - \frac{z'}{1-z}\right) (1-z') \delta_{\lambda',-h} \right] \left[ \delta_{\lambda,h} + \left(1 - \frac{z}{1-z'}\right) \delta_{\lambda,-h} \right] (\mathbf{m} \cdot \boldsymbol{\varepsilon}_{\lambda'}^* (\mathbf{h} \cdot \boldsymbol{\varepsilon}_\lambda^*) (\mathbf{l} \cdot \boldsymbol{\varepsilon}_{\lambda'}) \end{aligned} \quad (76)$$

which is simplified to

$$\begin{aligned} \psi_{(d)}^{q \rightarrow qg} &= \frac{-2g^3 t_{ji}^a}{\Delta_{03}^-} \left( C_F - \frac{C_A}{2} \right) \frac{\mu^{2-d_\perp}}{\pi} \int_0^{1-z} dz' \frac{\sqrt{1-z}}{z'(1-z-z')} \int \frac{d^{d_\perp} \mathbf{m}}{(2\pi)^{d_\perp}} \frac{m^i \left( m^j + \frac{z'}{1-z} n^j \right) \left( m^k + \frac{1-z'}{z} n^k \right)}{\mathbf{m}^2 \left[ \left( \mathbf{m} + \frac{z'}{1-z} \mathbf{n} \right)^2 + \frac{z'(1-z-z')}{z(1-z)^2} \mathbf{n}^2 \right]} \\ &\left[ \delta_{\lambda',h} + \left( \frac{1-z-z'}{1-z} \right) (1-z') \delta_{\lambda',-h} \right] \left[ \delta_{\lambda,h} + \frac{1-z-z'}{1-z'} \delta_{\lambda,-h} \right] \varepsilon_{\lambda'}^{*i} \varepsilon_{\lambda'}^{*j} \varepsilon_{\lambda}^{*k}. \end{aligned} \quad (77)$$

Applying the loop integral (A7) from Appendix A the UV-divergent part of the  $\mathbf{m}$ -integral becomes

$$I_{3,(d)}^{\text{pole}}(\mathbf{p}, \mathbf{q}, \mathbf{k}) = \frac{1}{16\pi} \left[ \frac{1}{\varepsilon_{\overline{\text{MS}}}} + \log \left( \frac{\mu^2}{\mathbf{n}^2} \right) \right] \left[ -\frac{z'}{1-z} n^i \delta^{jk} + \frac{z'}{1-z} n^j \delta^{ik} + \frac{2(1-z)(1-z') - z'z}{z(1-z)} n^k \delta^{ij} \right] \quad (78)$$



with

$$\mathbf{p} = \mathbf{k} = -\frac{z'}{1-z}\mathbf{n}, \quad \mathbf{q} = -\frac{1-z'}{z}\mathbf{n}, \quad M^2 = \frac{z'(1-z-z')}{z(1-z)^2}\mathbf{n}^2, \quad (79)$$

and performing the polarization sums (part in  $\{\}$ ) we get

$$\psi_{(d),pole}^{q \rightarrow qq} = \frac{-2g^3 t_{ji}^a}{\Delta_{03}^-} \left( C_F - \frac{C_A}{2} \right) \frac{\mathbf{n} \cdot \boldsymbol{\epsilon}_\lambda^*}{8\pi^2} \left[ \frac{1}{\epsilon_{\overline{\text{MS}}}} + \log \left( \frac{\mu^2}{\mathbf{n}^2} \right) \right] \int_0^{1-z} dz' \frac{\sqrt{1-z}}{z'(1-z-z')} \left\{ \frac{(1-z-z')}{z(1-z)^2} \right\} \left\{ (1-z) \left[ 1 + (1-z')^2 \right] \delta_{\lambda,h} + \left[ 1 + (1-z')^2 - 2z(2-z-z') \right] \delta_{\lambda,-h} \right\}. \quad (80)$$

The finite part of the  $\mathbf{m}$ -integral in Eq. (77) can be performed by using Eq. (A14) which gives the following expression

$$\psi_{(d),finite}^{q \rightarrow qq} = \frac{-2g^3 t_{ji}^a}{\Delta_{03}^-} \left( C_F - \frac{C_A}{2} \right) \frac{\mathbf{n} \cdot \boldsymbol{\epsilon}_\lambda^*}{\pi} \int_0^{1-z} dz' \frac{\sqrt{1-z}}{z'(1-z-z')} \times \mathcal{H}_{(d)}(z', z; \lambda, h), \quad (81)$$

where the function  $\mathcal{H}_{(d)}$  summed over the internal polarization  $\lambda'$  is

$$\mathcal{H}_{(d)}(z', z; \lambda, h) = A_{(d)}(z, z') \delta_{\lambda,h} + B_{(d)}(z, z') \delta_{\lambda,-h} \quad (82)$$

and the coefficients  $A_{(d)}$  and  $B_{(d)}$  corresponding to different polarization states are given by

$$A_{(d)}(z, z') = \frac{1}{16\pi z(1-z)^2} \left[ 4(1-z)^2 - 4(2-z)(1-z)z' + \left\{ 6 - z(10-3z) \right\} z'^2 - (2-3z)z'^3 - 2(1-z)(1-z-z') \left\{ (1-z')^2 \log \left( \frac{(1-z)(1-z')}{1-z-z'} \right) - (1+(1-z')^2) \log \left( \frac{z(1-z)^2}{z'(1-z-z')} \right) \right\} \right] \quad (83)$$

and

$$B_{(d)}(z, z') = \frac{(1-z-z')}{16\pi z(1-z)^2(1-z')} \left[ 4(1-z)^2 - 4(2-z)(1-z)z' + \left\{ 6 - z(2+z) \right\} z'^2 - (2+z)z'^3 - 2(1-z') \left\{ (1-z)^2 \log \left( \frac{(1-z)(1-z')}{1-z-z'} \right) - (1+(1-z')^2 - 2z(2-z-z')) \log \left( \frac{z(1-z)^2}{z'(1-z-z')} \right) \right\} \right]. \quad (84)$$

*Diagram (e)*

Then we turn to diagram (e), whose kinematics is presented in Fig. 12. The LC wave function is

$$\psi_{(e)}^{q \rightarrow qq} = \int \widetilde{d\mathbf{k}} \widetilde{d\mathbf{k}'} \widetilde{d\mathbf{k}''} (2\pi)^3 \delta^3(\vec{p} - \vec{k} - \vec{k}') (2\pi)^3 \delta^3(\vec{q} - \vec{k}' - \vec{k}'') \frac{V_{\lambda',h}^{i;k,b}(\mathbf{m}, z') A_{\lambda,h}^{l,k;a}(\mathbf{h}, \frac{1-z'}{z}) A_{\lambda',h}^{b;j,l}(\mathbf{1}, \frac{1-z}{z'})}{\Delta_{01}^- \Delta_{02}^- \Delta_{03}^-}, \quad (85)$$

where the phase space measure simplifies to

$$\int \widetilde{d\mathbf{k}} \widetilde{d\mathbf{k}'} \widetilde{d\mathbf{k}''} (2\pi)^3 \delta^3(\vec{p} - \vec{k} - \vec{k}') (2\pi)^3 \delta^3(\vec{q} - \vec{k}' - \vec{k}'') = \frac{\mu^{2-d_\perp}}{16\pi(p^+)^2} \int_{1-z}^1 \frac{dz'}{z'(1-z')(z'+z-1)} \int \frac{d^{d_\perp} \mathbf{m}}{(2\pi)^{d_\perp}} \quad (86)$$

and the LC energy denominators are

$$\Delta_{01}^- = \frac{-1}{2p^+} \frac{\mathbf{m}^2}{z'(1-z')} \quad (87)$$

$$\Delta_{02}^- = \frac{-1}{2p^+} \left[ \frac{\mathbf{n}^2}{z(1-z)} + \frac{\mathbf{h}^2}{(1-z') \left( 1 - \frac{1-z'}{z} \right)} \right] \quad (88)$$

$$\Delta_{03}^- = \frac{-1}{2p^+} \frac{\mathbf{n}^2}{z(1-z)}. \quad (89)$$

Following the same steps as in diagram (d) we find

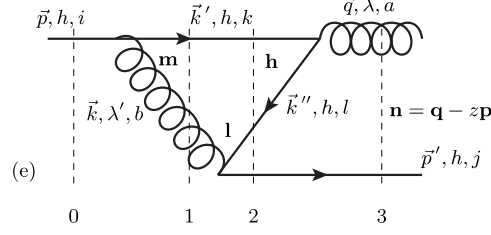


FIG. 12: One loop vertex correction diagram (e) with LC energy denominators and kinematics. Momentum conservation:  $\vec{p} = \vec{k} + \vec{k}'$ ,  $\vec{k}' + \vec{k}'' = \vec{q}$  and  $\vec{k} = \vec{k}'' + \vec{p}'$ . The momentum fraction in first gluon emission is  $z'$ , defined as  $k^+ = z'p^+$  and the natural momentum is  $\mathbf{m} = \mathbf{k} - z'\mathbf{p}$ . In the absorption of the same gluon the momentum fraction (of the quark) is  $p^+/k^+ = (1-z)/z'$  and the natural momentum  $\mathbf{l} = \mathbf{p}' - ((1-z)/z')\mathbf{k}$ . For the emission of the final state gluon the momentum fraction (of the quark) is  $k'^+/q^+ = (1-z')/z$  and the natural momentum  $\mathbf{h} = \mathbf{k}' - ((1-z')/z)\mathbf{q}$ . The natural momentum for the whole diagram is  $\mathbf{n} = \mathbf{q} - z\mathbf{p}$ . In order to use  $\mathbf{m}$  as the integration variable we need to know that  $\mathbf{l} = -\mathbf{n} - ((1-z)/z')\mathbf{m}$  and  $\mathbf{h} = -\mathbf{m} - (1-z')/z\mathbf{n}$ .

$$\psi_{(e)}^{q \rightarrow qg} = \frac{-2g^3 t_{ji}^a}{\Delta_{03}^-} \left( C_F - \frac{C_A}{2} \right) \frac{\mu^{2-d_\perp}}{\pi} \int_{1-z}^1 dz' \frac{\sqrt{1-z}}{z'(z'+z-1)} \int \frac{d^{d_\perp} \mathbf{m}}{(2\pi)^{d_\perp}} \frac{m^i \left( m^j + \frac{z'}{1-z} n^j \right) \left( m^k + \frac{1-z'}{z} n^k \right)}{\mathbf{m}^2 \left[ \left( \mathbf{m} + \frac{1-z'}{z} \mathbf{n} \right)^2 + \frac{(1-z')(z+z'-1)}{z^2(1-z)} \mathbf{n}^2 \right]} \left[ \frac{1-z}{z'} \delta_{\lambda',h} - \left( \frac{z'+z-1}{z'} \right) (1-z') \delta_{\lambda',-h} \right] \left[ -\frac{1-z'}{z} \delta_{\lambda,h} + \frac{z'+z-1}{z} \delta_{\lambda,-h} \right] \varepsilon_{\lambda'}^{*i} \varepsilon_{\lambda'}^{*j} \varepsilon_{\lambda}^{*k}. \quad (90)$$

The UV-divergent part of the  $\mathbf{m}$ -integral above is given by

$$I_{3,(e)}^{\text{pole}}(\mathbf{p}, \mathbf{q}, \mathbf{k}) = \frac{1}{16\pi} \left[ \frac{1}{\varepsilon_{\overline{\text{MS}}}} + \log \left( \frac{\mu^2}{\mathbf{n}^2} \right) \right] \left[ -\frac{1-z'}{z} n^i \delta^{jk} + \frac{z'z+z+z'-1}{z(1-z)} n^j \delta^{ik} + \frac{1-z'}{z} n^k \delta^{ij} \right] \quad (91)$$

with

$$\mathbf{p} = \frac{z'}{1-z} \mathbf{n}, \quad \mathbf{q} = \mathbf{k} = \frac{1-z'}{z} \mathbf{n}, \quad M^2 = \frac{(1-z')(z+z'-1)}{z^2(1-z)} \mathbf{n}^2. \quad (92)$$

Performing the internal polarization sums we get

$$\psi_{(e),\text{pole}}^{q \rightarrow qg} = \frac{-2g^3 t_{ji}^a}{\Delta_{03}^-} \left( C_F - \frac{C_A}{2} \right) \frac{\mathbf{n} \cdot \varepsilon_{\lambda}^*}{8\pi^2} \left[ \frac{1}{\varepsilon_{\overline{\text{MS}}}} + \log \left( \frac{\mu^2}{\mathbf{n}^2} \right) \right] \int_{1-z}^1 dz' \frac{\sqrt{1-z}}{z'(z'+z-1)} \left\{ \frac{(z+z'-1)}{z(1-z)} \right\} \left\{ ((1-z')^2) \delta_{\lambda,h} + (1-z) \delta_{\lambda,-h} \right\}. \quad (93)$$

Again, the finite  $\mathbf{m}$ -integral in Eq. (90) can be performed by using Eq. (A14), and thus we obtain

$$\psi_{(e),\text{finite}}^{q \rightarrow qg} = \frac{-2g^3 t_{ji}^a}{\Delta_{03}^-} \left( C_F - \frac{C_A}{2} \right) \frac{\mathbf{n} \cdot \varepsilon_{\lambda}^*}{\pi} \int_{1-z}^1 dz' \frac{\sqrt{1-z}}{z'(z'+z-1)} \times \mathcal{H}_{(e)}(z', z; \lambda, h) \quad (94)$$

with

$$\mathcal{H}_{(e)}(z', z; \lambda, h) = A_{(e)}(z, z') \delta_{\lambda,h} + B_{(e)}(z, z') \delta_{\lambda,-h} \quad (95)$$

and

$$A_{(e)} = \frac{-1}{16\pi z^2 (1-z) z'} \left[ (1-z')^2 \left( 1 + (1-z')^2 \right) + z^2 (1-z') \left( 2 - 3(1-z')z' \right) - z(1-z') \left\{ 4 - z' \left( 7 - (8-3z')z' \right) \right\} + 2z z' (z'+z-1) \left\{ \left( 1 + (1-z')^2 \right) \log \left( \frac{z z'}{z'+z-1} \right) - (1-z')^2 \log \left( \frac{z^2 (1-z)}{(1-z')(z'+z-1)} \right) \right\} \right] \quad (96)$$

and

$$B_{(e)} = \frac{(z' + z - 1)}{16\pi z^2 (1-z)^2 z'} \left[ (1-z)(1-z') \left( 1 + (1-z')^2 \right) + z^2(1-z)(2-z'(3+z')) - z(1-z) \left\{ 4 - (7-z'^2)z' \right\} \right. \\ \left. - 2zz' \left\{ \left( 1 + (1-z')^2 - 2z(2-z-z') \right) \log \left( \frac{zz'}{z'+z-1} \right) - (1-z)^2 \log \left( \frac{(1-z)z^2}{(1-z')(z'+z-1)} \right) \right\} \right]. \quad (97)$$

*Sum of diagrams (d) and (e)*

The diagrams (d) and (e) have the same color structure, in fact they are represented by the same diagram in covariant perturbation theory. Adding (d) and (e) and regulating the IR-divergence  $z' \rightarrow 0$  in (d) by  $\alpha < z' < 1-z$ , we obtain for the UV divergent part

$$\psi_{(d),\text{pole}}^{q \rightarrow qq} + \psi_{(e),\text{pole}}^{q \rightarrow qq} = \psi_{\text{LO}}^{q \rightarrow qq}(\mathbf{n}, z) \frac{g^2}{8\pi^2} \left[ \frac{1}{\varepsilon_{\overline{\text{MS}}}} + \log \left( \frac{\mu^2}{\mathbf{n}^2} \right) \right] \left( C_F - \frac{C_A}{2} \right) \left[ -\frac{3}{2} + \ln(1-z) - 2 \ln \alpha \right]. \quad (98)$$

Similarly, the remaining finite  $z'$ -integrals in (81) and (94) simplifies to

$$\psi_{(d),\text{finite}}^{q \rightarrow qq} + \psi_{(e),\text{finite}}^{q \rightarrow qq} = \psi_{\text{LO}}^{q \rightarrow qq}(\mathbf{n}, z) \frac{g^2}{48\pi^2} \left( C_F - \frac{C_A}{2} \right) \mathcal{H}_{(d)(e)}(z, \alpha) \\ + \frac{-2g^3 t_{ji}^a}{\Delta_{03}} \left( C_F - \frac{C_A}{2} \right) \frac{-3(\mathbf{n} \cdot \boldsymbol{\varepsilon}_\lambda^*)}{48\pi^2 z \sqrt{1-z}} \left[ (z + (2+z) \log(1-z)) \delta_{\lambda,h} + z \log(z) \delta_{\lambda,-h} \right] \quad (99)$$

with

$$\mathcal{H}_{(d)(e)}(z, \alpha) = \pi^2 - 15 + 3 \log^2(1-z) - 9 \log(z) + \frac{12}{z} \log(1-z) - 6 \log(1-z) + 12 \log(1-z) \log \left( \frac{z}{\alpha} \right) \\ - 12 \log(z) \log(\alpha) - 12 \log(\alpha) + 6 \log^2(\alpha) + 6 \text{Li}_2(1-z). \quad (100)$$

Here  $\text{Li}_2(z)$  is the standard dilogarithm function, defined as

$$\text{Li}_2(z) \equiv - \int_0^z dy \frac{\log(1-y)}{y}, \quad z \in \mathbb{R} \setminus [1, \infty), \quad (101)$$

and in particular, for  $0 < z < 1$  we have

$$\text{Li}_2(z) + \text{Li}_2(1-z) = \frac{\pi^2}{6} - \log(z) \log(1-z). \quad (102)$$

The UV-finite parts of the expression (99) depend on the renormalization scheme. In the FDH scheme the NLO part of the wave function has a part that is not proportional to the  $\delta_{\lambda,h} + (1-z)\delta_{\lambda,-h}$  helicity structure of the leading order part.

*Diagram (f)*

Diagram (f), shown in Fig. 13, is

$$\psi_{(f)}^{q \rightarrow qq} = \int \widetilde{\text{d}k} \widetilde{\text{d}k'} \widetilde{\text{d}p}'' (2\pi)^3 \delta^3(\vec{q}' - \vec{k}' - \vec{k}) (2\pi)^3 \delta^3(\vec{q} - \vec{k}' - \vec{k}) \frac{V_{\lambda_1,h}^{i;k,b}(\mathbf{m}, z') V_{\lambda_2,h}^{k,c;j}(\mathbf{l}, \xi)}{\Delta_{01} \Delta_{02} \Delta_{03}} \Gamma_{\lambda_1; \lambda_2, \lambda}^{b;c,a}(\mathbf{h}, z/z') \quad (103)$$

where the phase space measure is

$$\int \widetilde{\text{d}k} \widetilde{\text{d}k'} \widetilde{\text{d}p}'' (2\pi)^3 \delta^3(\vec{q}' - \vec{k}' - \vec{k}) (2\pi)^3 \delta^3(\vec{q} - \vec{k}' - \vec{k}) = \frac{\mu^{2-d_\perp}}{16\pi(p^+)^2} \int_z^1 \frac{\text{d}z'}{z'(1-z)^2 \xi(1-\xi)} \int \frac{\text{d}^{d_\perp} \mathbf{k}}{(2\pi)^{d_\perp}} \\ = \frac{\mu^{2-d_\perp}}{16\pi(p^+)^2} \int_z^1 \frac{\text{d}z'}{z'(z'-z)(1-z')} \int \frac{\text{d}^{d_\perp} \mathbf{m}}{(2\pi)^{d_\perp}}, \quad (104)$$

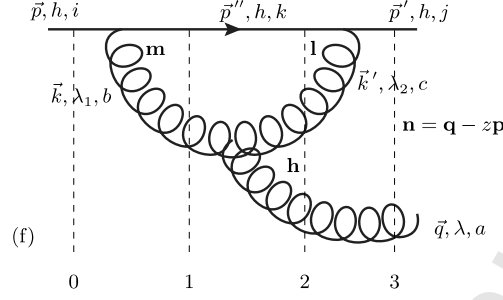


FIG. 13: One loop vertex correction diagram (f) with LC energy denominators and kinematics. Momentum conservation:  $\vec{p}' = \vec{p} - \vec{q}$ ,  $\vec{p}'' = \vec{p} - \vec{k}$  and  $\vec{k}' = \vec{k} - \vec{q}$ . Momentum fractions are defined by  $k^+ = z'p^+$ ,  $k'^+ = \xi p'^+$  and  $q^+ = zp^+$ . The momentum fraction of the 3 gluon splitting is  $q^+/k^+ = z/z'$ . The natural momenta for the three vertices are  $\mathbf{m} \equiv \mathbf{k} - z'\mathbf{p}$ ,  $\mathbf{l} \equiv \mathbf{k}' - \xi\mathbf{p}'$  and  $\mathbf{h} \equiv \mathbf{q} - (z/z')\mathbf{k}$ , and the natural momentum scale for the whole diagram is  $\mathbf{n} \equiv \mathbf{q} - z\mathbf{p}$ . Note that  $z' = z + \xi(1-z)$  so that  $p''^+ = (1-\xi)(1-z)p^+$ . To choose  $\mathbf{m}$  as the integration variable we need  $\mathbf{l} = \mathbf{m} - (1-\xi)\mathbf{n}$  and  $\mathbf{h} = \mathbf{n} - (z/z')\mathbf{m}$ .

the LC energy denominators are

$$\begin{aligned}\Delta_{01}^- &= \frac{-1}{2p^+} \frac{\mathbf{m}^2}{z'(1-z')} \\ \Delta_{02}^- &= \frac{-1}{2p^+} \left[ \frac{\mathbf{n}^2}{z(1-z)} + \frac{1}{1-z} \frac{\mathbf{l}^2}{\xi(1-\xi)} \right] \\ \Delta_{03}^- &= \frac{-1}{2p^+} \frac{\mathbf{n}^2}{z(1-z)},\end{aligned}\quad (105)$$

and the variable  $\xi$  is defined in Fig. 13. Putting everything together and using

$$it_{jk}^c t_{ki}^b f^{bca} = \frac{C_A}{2} t_{ji}^a \quad (106)$$

the expression in Eq. (103) simplifies to

$$\begin{aligned}\psi_{(f)}^{q \rightarrow qg} &= \frac{+2g^3 t_{ji}^a}{\Delta_{03}^-} \left( \frac{C_A}{2} \right) \frac{\mu^{2-d_\perp}}{\pi} \int_z^1 dz' \frac{z\sqrt{1-z}}{(z')^2(z'-z)} \int \frac{d^{d_\perp} \mathbf{m}}{(2\pi)^{d_\perp}} \frac{m^i (m^j - (1-\xi)n^j) (m^k - (z'/z)n^k)}{\mathbf{m}^2 \left[ (\mathbf{m} - (1-\xi)\mathbf{n})^2 + \frac{\xi(1-\xi)}{z} \mathbf{n}^2 \right]} \\ &\quad \left[ \delta_{\lambda_1, h} + (1-z')\delta_{\lambda_1, -h} \right] \left[ \delta_{\lambda_2, h} + (1-\xi)\delta_{\lambda_2, -h} \right] \left[ \frac{\varepsilon_{\lambda_2}^{*k} \delta_{\lambda_1, \lambda}}{1-z/z'} + \frac{\varepsilon_{\lambda}^{*k} \delta_{\lambda_1, \lambda_2}}{z/z'} - \varepsilon_{\lambda_1}^k \delta_{\lambda_2, -\lambda} \right] \varepsilon_{\lambda_1}^{*i} \varepsilon_{\lambda_2}^j.\end{aligned}\quad (107)$$

The UV divergent part of the  $\mathbf{m}$ -integral becomes

$$I_{3,(f)}^{\text{pole}}(\mathbf{p}, \mathbf{q}, \mathbf{k}) = \frac{1}{16\pi} \left[ \frac{1}{\varepsilon_{\overline{\text{MS}}}} + \log \left( \frac{\mu^2}{\mathbf{n}^2} \right) \right] \left[ (1-\xi)n^i \delta^{jk} - (1-\xi)n^j \delta^{ik} + (1-\xi-2z'/z)n^k \delta^{ij} \right], \quad (108)$$

where

$$\mathbf{p} = \mathbf{k} = (1-\xi)\mathbf{n}, \quad \mathbf{q} = \frac{z'}{z}\mathbf{n}, \quad M^2 = \frac{\xi(1-\xi)}{z} \mathbf{n}^2. \quad (109)$$

Performing the helicity sums and index contractions then gives for the pole part

$$\begin{aligned}\psi_{(f),\text{pole}}^{q \rightarrow qg} &= \frac{+2g^3 t_{ji}^a}{\Delta_{03}^-} \left( \frac{C_A}{2} \right) \frac{\mathbf{n} \cdot \varepsilon_{\lambda}^*}{8\pi^2} \left[ \frac{1}{\varepsilon_{\overline{\text{MS}}}} + \log \left( \frac{\mu^2}{\mathbf{n}^2} \right) \right] \int_z^1 dz' \frac{z\sqrt{1-z}}{(z')^2(z'-z)} \left\{ z' \frac{z(1-z')^2 - z'(1+(1-z')^2)}{(1-z)^2} \delta_{\lambda, h} \right. \\ &\quad \left. + z' \frac{z(1-z)^2 + zz'(2-z) - z'(1+(1-z')^2)}{(1-z)^2 z^2} \delta_{\lambda, -h} \right\}.\end{aligned}\quad (110)$$

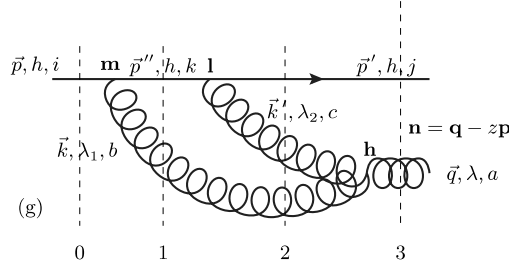


FIG. 14: One loop vertex correction diagram (g) with energy denominators and kinematics. Momentum conservation:  $\vec{p}' = \vec{p} - \vec{q}$ ,  $\vec{p}'' = \vec{p} - \vec{k}$  and  $\vec{k}' = \vec{p}'' - \vec{p}' = \vec{q} - \vec{k}$ . Momentum fractions are defined by  $k^+ = z'p^+$ ,  $k'^+ = \xi p''^+$  and  $q^+ = zp^+$ . The momentum fraction of the 3 gluon merging is  $k^+/q^+ = z'/z$ . The natural momenta for the three vertices are  $\mathbf{m} \equiv \mathbf{k} - z'\mathbf{p}$ ,  $\mathbf{l} \equiv \mathbf{k}' - \xi\mathbf{p}''$  and  $\mathbf{h} \equiv \mathbf{k} - (z'/z)\mathbf{q}$ , and the natural momentum scale for the whole diagram is  $\mathbf{n} \equiv \mathbf{q} - z\mathbf{p}$ . Note that  $z = z' + \xi(1 - z')$  so that  $p''^+ = (1 - z')p^+$ . To choose  $\mathbf{m}$  as the integration variable we need  $\mathbf{l} = \mathbf{n} - (1 - \xi)\mathbf{m}$  and  $\mathbf{h} = \mathbf{m} - (z'/z)\mathbf{n}$ .

For the finite  $\mathbf{m}$ -integral we obtain

$$\psi_{(f),\text{finite}}^{q \rightarrow qg} = \frac{+2g^3 t_{ji}^a}{\Delta_{03}^-} \left( \frac{C_A}{2} \right) \frac{\mathbf{n} \cdot \boldsymbol{\varepsilon}_\lambda^*}{\pi} \int_z^1 dz' \frac{z\sqrt{1-z}}{(z')^2(z'-z)} \times \mathcal{H}_{(f)}(z', z; \lambda, h), \quad (111)$$

where

$$\mathcal{H}_{(f)}(z', z; \lambda, h) = A_{(f)}(z, z')\delta_{\lambda,h} + B_{(f)}(z, z')\delta_{\lambda,-h} \quad (112)$$

with the coefficients

$$\begin{aligned} A_{(f)}(z, z') &= \frac{1}{16\pi(1-z)^2 z^2 (z-z')} \left[ 2(z')^3 (1 + (1-z')^2) + z^3 (2 - z'(5 - 3(2-z')z')) - z(z')^2 (6 - z'(2 + 3(1-z')z')) \right. \\ &\quad \left. - z^2 z' (2 - z'(11 - z'(13 - 6z'))) + 2(1-z)(z-z')z' \left\{ (z'(1-z')^2 - z(2-z'(2-z'))) \log \left( \frac{(1-z)z'}{z'-z} \right) \right. \right. \\ &\quad \left. \left. + (z(1-z')^2 - z'(1 + (1-z')^2)) \log \left( \frac{z(1-z)^2}{(1-z')(z'-z)} \right) \right\} \right] \end{aligned} \quad (113)$$

and

$$\begin{aligned} B_{(f)}(z, z') &= \frac{1}{16\pi(1-z)^2 z^2 (z-z')} \left[ 2(1-z)z^3 - (1-z)z^2(2+3z)z' - z(z')^2(6-z(11-(9-z)z)) \right. \\ &\quad \left. + (z')^3(4+z(2+3z)) - (z')^4(4+5z) + (z')^5(2+z) - 2z' \left\{ (1-z)^2 (2z^2 - 3zz' + (z')^2) \log \left( \frac{(1-z)z'}{z'-z} \right) \right. \right. \\ &\quad \left. \left. - (z-z') (z(1-z)^2 + zz'(2-z) - z'(1 + (1-z')^2)) \log \left( \frac{z(1-z)^2}{(1-z')(z'-z)} \right) \right\} \right]. \end{aligned} \quad (114)$$

Diagram (g)

The LC wave function for the diagram (g) with the kinematics shown in Fig. 14 is

$$\psi_{(g)}^{q \rightarrow qg} = \int \widetilde{dk} \widetilde{dk}' \widetilde{dp}'' (2\pi)^3 \delta^3(\vec{k}' - \vec{p}'' + \vec{p}') (2\pi)^3 \delta^3(\vec{p}'' - \vec{p} + \vec{k}) \frac{V_{\lambda_1, h}^{i; k, b}(\mathbf{m}, z') V_{\lambda_2, h}^{k; j, c}(\mathbf{l}, \xi)}{\Delta_{01}^- \Delta_{02}^- \Delta_{03}^-} \Gamma_{\lambda_2, \lambda_1; \lambda}^{cb; a}(\mathbf{h}, z'/z), \quad (115)$$

where the phase space measure is

$$\int \widetilde{dk} \widetilde{dk}' \widetilde{dp}'' (2\pi)^3 \delta^3(\vec{k}' - \vec{p}'' + \vec{p}') (2\pi)^3 \delta^3(\vec{p}'' - \vec{p} + \vec{k}) = \frac{\mu^{2-d_\perp}}{16\pi(p^+)^2} \int_0^z \frac{dz'}{z'(z-z')(1-z')} \int \frac{d^{d_\perp} \mathbf{m}}{(2\pi)^{d_\perp}} \quad (116)$$

and the LC energy denominators are

$$\Delta_{01}^- = \frac{-1}{2p^+} \frac{\mathbf{m}^2}{z'(1-z')} \quad (117)$$

$$\Delta_{02}^- = \frac{-1}{2p^+} \left[ \frac{\mathbf{n}^2}{z(1-z)} + \frac{1}{z} \frac{\mathbf{h}^2}{(z'/z)(1-(z'/z))} \right] \quad (118)$$

$$\Delta_{03}^- = \frac{-1}{2p^+} \frac{\mathbf{n}^2}{z(1-z)}. \quad (119)$$

Adding everything together yields

$$\begin{aligned} \psi_{(g)}^{q \rightarrow qg} &= \frac{+2g^3 t_{ji}^a}{\Delta_{03}^-} \left( \frac{C_A}{2} \right) \frac{\mu^{2-d_\perp}}{\pi} \int_0^z dz' \frac{\sqrt{1-z}}{z(z-z')} \int \frac{d^{d_\perp} \mathbf{m}}{(2\pi)^{d_\perp}} m^i \left( m^j - \left( \frac{1-z'}{1-z} \right) n^j \right) \left( m^k - \frac{z'}{z} n^k \right) \\ &\quad \frac{1}{\mathbf{m}^2 \left[ \left( \mathbf{m} - \frac{z'}{z} \mathbf{n} \right)^2 + \frac{z'(z-z')}{z^2(1-z)} \mathbf{n}^2 \right]} \\ &\quad \left[ \delta_{\lambda_1, h} + (1-z') \delta_{\lambda_1, -h} \right] \left[ \delta_{\lambda_2, h} + \left( \frac{1-z}{1-z'} \right) \delta_{\lambda_2, -h} \right] \left[ \frac{\varepsilon_{\lambda_2}^k \delta_{\lambda_1, \lambda}}{1-z'/z} + \frac{\varepsilon_{\lambda_1}^k \delta_{\lambda, \lambda_2}}{z'/z} - \varepsilon_{\lambda}^{*k} \delta_{\lambda_1, -\lambda_2} \right] \varepsilon_{\lambda_1}^{*i} \varepsilon_{\lambda_2}^{*j}. \end{aligned} \quad (120)$$

The UV divergent part of the transverse integral is

$$I_{3,(g)}^{\text{pole}}(\mathbf{p}, \mathbf{q}, \mathbf{k}) = \frac{1}{16\pi} \left[ \frac{1}{\varepsilon_{\overline{\text{MS}}}} + \log \left( \frac{\mu^2}{\mathbf{n}^2} \right) \right] \left[ \frac{z'}{z} n^i \delta^{jk} - \frac{z-z'+z(1-z')}{z(1-z)} n^j \delta^{ik} - \frac{z'}{z} n^k \delta^{ij} \right], \quad (121)$$

where

$$\mathbf{p} = \left( \frac{1-z'}{1-z} \right) \mathbf{n}, \quad \mathbf{q} = \mathbf{k} = \left( \frac{z'}{z} \right) \mathbf{n}, \quad M^2 = \frac{z'(z-z')}{z^2(1-z)} \mathbf{n}^2. \quad (122)$$

Using mathematica for the polarization sums the pole part of the diagram becomes

$$\begin{aligned} \psi_{(g)}^{q \rightarrow qg} &= \frac{+2g^3 t_{ji}^a}{\Delta_{03}^-} \left( \frac{C_A}{2} \right) \frac{\mathbf{n} \cdot \varepsilon_{\lambda}^*}{8\pi^2} \left[ \frac{1}{\varepsilon_{\overline{\text{MS}}}} + \log \left( \frac{\mu^2}{\mathbf{n}^2} \right) \right] \int_0^z dz' \frac{\sqrt{1-z}}{z(z-z')} \left\{ \frac{z'(1-z')^2 - z(1+(1-z')^2)}{z'(1-z)} \delta_{\lambda, h} \right. \\ &\quad \left. + \frac{z' - 2z}{z'} \delta_{\lambda, -h} \right\}. \end{aligned} \quad (123)$$

Like before the remaining finite part can be cast in the following form

$$\psi_{(g), \text{finite}}^{q \rightarrow qg} = \frac{+2g^3 t_{ji}^a}{\Delta_{03}^-} \left( \frac{C_A}{2} \right) \frac{\mathbf{n} \cdot \varepsilon_{\lambda}^*}{\pi} \int_0^z dz' \frac{\sqrt{1-z}}{z(z-z')} \times \mathcal{H}_{(g)}(z', z; \lambda, h), \quad (124)$$

where

$$\mathcal{H}_{(g)}(z', z; \lambda, h) = A_{(g)}(z, z') \delta_{\lambda, h} + B_{(g)}(z, z') \delta_{\lambda, -h} \quad (125)$$

and the coefficients are given by

$$\begin{aligned} A_{(g)}(z, z') &= \frac{1}{16\pi(1-z)(1-z')z z'(z-z')} \left[ -(z')^3 (1+(1-z')^2) + z(z')^2 (2+3(1-z')^2 z') - z^3(1-z') (4-z'(4-3z')) \right. \\ &\quad \left. + z^2 z' (6-z'(17-2(8-3z')z')) + 2z(1-z')(z-z') \left\{ (z(1-z')^2 - z'(1+(1-z')^2)) \log \left( \frac{z(1-z')}{z-z'} \right) \right. \right. \\ &\quad \left. \left. + (z'(1-z')^2 - z(1+(1-z')^2)) \log \left( \frac{(1-z)z^2}{z'(z-z')} \right) \right\} \right] \end{aligned} \quad (126)$$

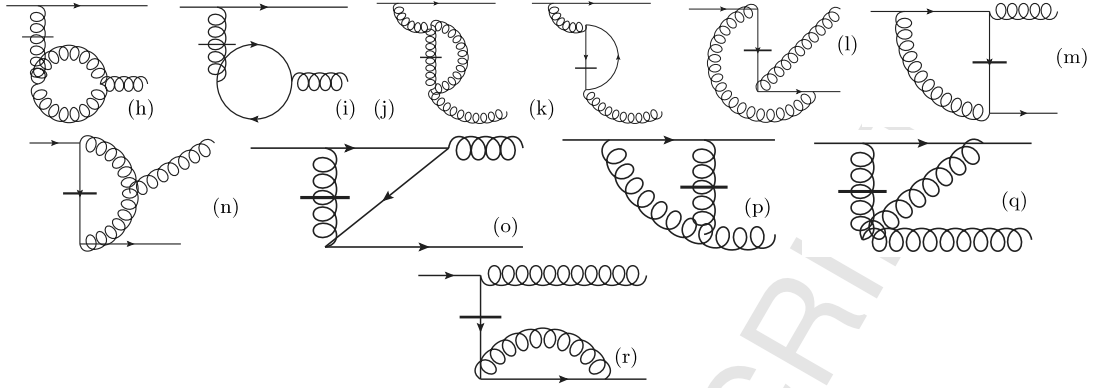


FIG. 15: Loop diagrams with an instantaneous interaction, vanishing in dimensional regularization.

and

$$\begin{aligned}
B_{(g)}(z, z') &= \frac{1}{16\pi(1-z)^2(1-z')z z'(z'-z)} \left[ (1-z)(z')^3(1+(1-z')^2) + 2(1-z)z^3(2+z'-5(z')^2) \right. \\
&\quad - z(1-z)(z')^2(2-z'+4(z')^2 - (z')^3) - 3(1-z)z^2z'(2-z'(3+z')) - (1-z)z^4(4-z'(4+z')) \\
&\quad + 2z(1-z') \left\{ (1-z)^2(2z^2 - 3zz' + (z')^2) \log\left(\frac{(1-z)z^2}{z'(z-z')}\right) \right. \\
&\quad \left. \left. - (z-z') \left( z(1-z)^2 + zz'(2-z) - z'(1+(1-z')^2) \right) \log\left(\frac{z(1-z')}{z-z'}\right) \right\} \right]. \tag{127}
\end{aligned}$$

*Sum of diagrams (f) and (g)*

Again, diagrams (f) and (g) have the same color structure and correspond to the same covariant theory diagram. The sum of (f) and (g), with the soft divergence regulated by  $z + \alpha < z' < 1$  in (f) and  $\alpha < z' < z - \alpha$  in (g) has the UV-divergent part

$$\psi_{(f),\text{pole}}^{q \rightarrow qq} + \psi_{(g),\text{pole}}^{q \rightarrow qq} = \psi_{\text{LO}}^{q \rightarrow qq}(\mathbf{n}, z) \frac{g^2}{8\pi^2} \left( \frac{C_A}{2} \right) \left[ \frac{1}{\epsilon_{\overline{\text{MS}}}} + \log\left(\frac{\mu^2}{\mathbf{n}^2}\right) \right] \left[ -\frac{3}{2} - 4 \ln \alpha + \ln(1-z) + 2 \ln z \right]. \tag{128}$$

And the finite ones

$$\begin{aligned}
\psi_{(f),\text{finite}}^{q \rightarrow qq} + \psi_{(g),\text{finite}}^{q \rightarrow qq} &= -\psi_{\text{LO}}^{q \rightarrow qq}(\mathbf{n}, z) \frac{g^2}{48\pi^2} \left( \frac{C_A}{2} \right) \mathcal{H}_{(f)(g)}(z, \alpha) \\
&\quad + \frac{2g^3 t_{ji}^a}{\Delta_{03}} \left( \frac{C_A}{2} \right) \frac{3(\mathbf{n} \cdot \boldsymbol{\epsilon}_\lambda^*)}{48\pi^2 z \sqrt{1-z}} \left[ ((1+2z) \log(1-z) - 1) \delta_{\lambda,h} + 2z(2-z) \log(z) \delta_{\lambda,-h} \right], \tag{129}
\end{aligned}$$

where

$$\begin{aligned}
\mathcal{H}_{(f)(g)}(z, \alpha) &= 12 - 4\pi^2 + \frac{12(1-z)z}{\alpha} + 3 \left( \frac{1-3z^2}{z} \right) \log(1-z) - 3 \left( \frac{1+z+z^2}{1-z} \right) \log(z) + 24 \log(\alpha) - 18 \log^2(\alpha) \\
&\quad - 36 \log\left(\frac{z}{1-z}\right) \log(\alpha) - 30 \log(1-z) \log(z) - 9 \log^2(1-z) - 12 \log^2(z) - 6 \text{Li}_2(z). \tag{130}
\end{aligned}$$

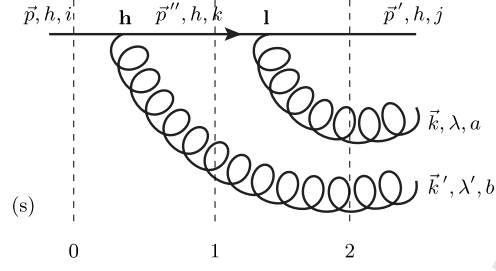


FIG. 16: Two-gluon emission diagram (s) with LC energy denominators and kinematics. Energy conservation:  $\vec{p} = \vec{p}'' + \vec{k}'$  and  $\vec{p}'' = \vec{p}' + \vec{k}$ . The momentum fraction and natural momentum scale for the emitted gluon  $\vec{k}'$  are  $z(1-z') = k'^+/p^+$  and  $\mathbf{h} = \mathbf{k}' - z(1-z')\mathbf{p}$ , respectively. Similarly, for the emitted gluon  $\vec{k}$  we have  $zz'/(1-z(1-z')) = k^+/p''^+$  and  $\mathbf{l} = \mathbf{k} - zz'/(1-z(1-z'))\mathbf{p}''$ .

#### D. One loop vertex corrections to gluon emission with an instantaneous diagram

In addition to the one loop vertex corrections computed in section III C there are several one loop diagrams containing either quark or gluon instantaneous vertex, see Fig. 15. It is, however, straightforward to show that at one loop all of these corrections are only linearly proportional to the transverse momentum in the loop, and hence the possible  $d_{\perp}$  dimensional transverse integral gives zero in dimensional regularization framework.

#### E. Three-particle final states

Finally, we write down for reference the wave functions for possible three-particle final states shown in Figs. 16, 17 and 18. The wave function for the two-gluon emission diagram (s), with kinematical variables shown in Fig. 16, is

$$\psi_{(s)}^{q \rightarrow qgg} = \int \widetilde{d\mathbf{p}''} (2\pi)^3 \delta^{(3)}(\vec{p} - \vec{p}'' - \vec{k}') \frac{V_{\lambda',h}^{i;\ell,b}(\mathbf{h}, z(1-z')) V_{\lambda,h}^{\ell;j,a}\left(\mathbf{l}, \frac{zz'}{1-z(1-z')}\right)}{\Delta_{01}^- \Delta_{02}^-}, \quad (131)$$

where the LC energy denominators are given by

$$\Delta_{01}^- = \frac{-1}{2p^+} \frac{\mathbf{h}^2}{z(1-z')(1-z(1-z'))} \quad (132)$$

$$\Delta_{02}^- = \frac{-1}{2p^+} \frac{(1-z(1-z'))}{zz'(1-z)} \left[ \mathbf{l}^2 + \frac{z'(1-z)}{(1-z')(1-z(1-z'))^2} \mathbf{h}^2 \right], \quad (133)$$

and the phase space measure simplifies to

$$\int \widetilde{d\mathbf{p}''} (2\pi)^3 \delta^{(3)}(\vec{p} - \vec{p}'' - \vec{k}') = \frac{1}{2p^+(1-z(1-z'))}. \quad (134)$$

Putting everything together we get

$$\psi_{(s)}^{q \rightarrow qgg} = 8p^+ g^2 t_{jk}^a t_{ki}^b \sqrt{1-z} \left[ \delta_{\lambda',h} + (1-z(1-z')) \delta_{\lambda',-h} \right] \left[ \delta_{\lambda,h} + \left( \frac{1-z}{1-z(1-z')} \right) \delta_{\lambda,-h} \right] \times \frac{(\mathbf{l} \cdot \boldsymbol{\varepsilon}_{\lambda'}^*)(\mathbf{h} \cdot \boldsymbol{\varepsilon}_{\lambda'}^*)}{\mathbf{h}^2 \left[ \mathbf{l}^2 + \frac{z'(1-z)}{(1-z')(1-z(1-z'))^2} \mathbf{h}^2 \right]}. \quad (135)$$

Note that in the full Fock state decomposition, the wave function  $\Psi^{q \rightarrow qgg}$  also needs to include a second copy of diagram (s) with the final state gluon momentum labels interchanged.

For diagram (t), with kinematical variables as in Fig. 17, the LC wave function is given by

$$\psi_{(t)}^{q \rightarrow qgg} = \int \widetilde{d\mathbf{q}} (2\pi)^3 \delta^{(3)}(\vec{p} - \vec{p}' - \vec{q}) \frac{V_{\sigma,h}^{i;j,c}(\mathbf{n}, z) \Gamma_{\sigma,\lambda,\lambda'}^{c;a,b}(\mathbf{m}, z')}{\Delta_{01}^- \Delta_{02}^-}, \quad (136)$$



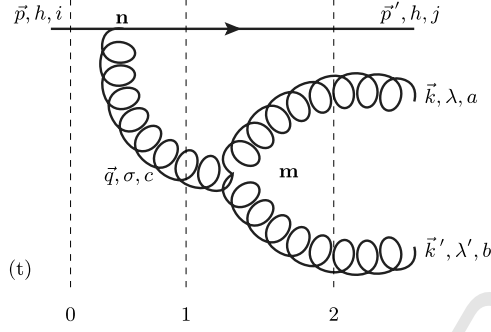


FIG. 17: Two-gluon splitting diagram (t) with intermediate states for LC energy denominators and kinematics. Energy conservation:  $\vec{p} = \vec{p}' + \vec{q}$  and  $\vec{q} = \vec{k}' + \vec{k}$ . The momentum fraction and natural momentum scale for the emitted gluon  $\vec{q}$  are  $z = q^+/p^+$  and  $\mathbf{n} = \mathbf{q} - z\mathbf{p}$ , respectively. The momentum fraction of the 3 gluon splitting is  $k^+/q^+ = z'$  and the natural momentum  $\mathbf{m} = \mathbf{k} - z'\mathbf{q}$ .

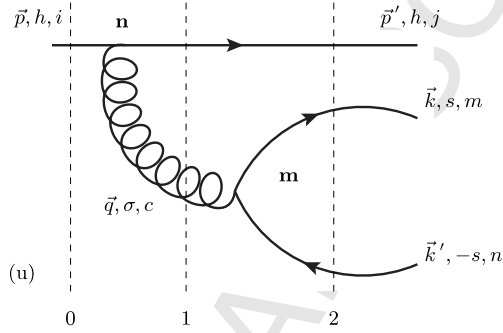


FIG. 18: Quark-antiquark splitting diagram (u) with intermediate states and kinematics. Momentum conservation dictates  $\vec{p} = \vec{p}' + \vec{q}$  and  $\vec{q} = \vec{k}' + \vec{k}$ . The momentum fraction and natural momentum scale for the emitted gluon  $\vec{q}$  are  $z = q^+/p^+$  and  $\mathbf{n} = \mathbf{q} - z\mathbf{p}$ , respectively. The momentum fraction of the gluon to quark pair splitting is  $k^+/q^+ = z'$  and the natural momentum  $\mathbf{m} = \mathbf{k} - z'\mathbf{q}$ .

and the LC energy denominators are

$$\Delta_{01}^- = \frac{-1}{2p^+} \frac{\mathbf{n}^2}{z(1-z)} \quad (137)$$

$$\Delta_{02}^- = \frac{-1}{2p^+} \frac{1}{z(1-z)} \left[ \mathbf{n}^2 + \frac{(1-z)}{z'(1-z')} \mathbf{m}^2 \right], \quad (138)$$

where the second LC energy difference (138) is naturally the same as for the other emission diagram to the same final state in (133), although expressed in terms of different variables. The phase space integration gives

$$\int \widetilde{d\vec{q}} (2\pi)^3 \delta^{(3)}(\vec{p} - \vec{p}' - \vec{q}) = \frac{1}{2zp^+}. \quad (139)$$

Putting everything together we obtain

$$\begin{aligned} \psi_{(t)}^{q\text{-}qgg} = & 8ip^+ g^2 t_{ji}^c f^{cab} (1-z)^{3/2} \left[ \delta_{\sigma,h} + (1-z)\delta_{\sigma,-h} \right] \left[ \frac{\mathbf{m} \cdot \boldsymbol{\varepsilon}_\lambda^*}{1-z'} \delta_{\sigma,\lambda'} + \frac{\mathbf{m} \cdot \boldsymbol{\varepsilon}_{\lambda'}^*}{z'} \delta_{\sigma,\lambda} - \mathbf{m} \cdot \boldsymbol{\varepsilon}_\sigma \delta_{\lambda,-\lambda'} \right] \\ & \times \frac{(\mathbf{n} \cdot \boldsymbol{\varepsilon}_\lambda^*)}{\mathbf{n}^2 \left[ \mathbf{n}^2 + \frac{(1-z)}{z'(1-z')} \mathbf{m}^2 \right]}. \end{aligned} \quad (140)$$

The wave function for quark-antiquark splitting diagram (u) shown in Fig. 18 can be written as

$$\psi_{(u)}^{q \rightarrow qq\bar{q}} = \int \widetilde{d\mathbf{q}} (2\pi)^3 \delta^{(3)}(\vec{p} - \vec{p}' - \vec{q}) \frac{V_{\sigma,h}^{i,j,c}(\mathbf{n}, z) A_{\sigma,s}^{c,n,m}(\mathbf{m}, z')}{\Delta_{01}^- \Delta_{02}^-}, \quad (141)$$

where the integration over the phase space simplifies to Eq. (139), and the LC energy denominators are the same as for the three gluon final state, Eqs. (137) and (138). Adding everything together, the wave function for diagram (u) can be cast in the following form

$$\psi_{(t)}^{q \rightarrow qq\bar{q}} = 8p^+ g^2 t_{ji}^c t_{nm}^c \frac{(1-z)^{3/2}}{\sqrt{z'(1-z')}} \left[ \delta_{\sigma,h} + (1-z')\delta_{\sigma,-h} \right] \left[ z'\delta_{\sigma,s} - (1-z')\delta_{\sigma,-s} \right] \frac{(\mathbf{n} \cdot \boldsymbol{\varepsilon}_\sigma^*)(\mathbf{m} \cdot \boldsymbol{\varepsilon}_\sigma)}{\mathbf{n}^2 \left[ \mathbf{n}^2 + \frac{(1-z)}{z'(1-z')} \mathbf{m}^2 \right]}. \quad (142)$$

In addition to these, there are three contributions from the instantaneous diagrams in Figs. 4, 5 and 6. Since these diagrams do not have an intermediate state, there is no phase space integral. The contribution to the wave function is given directly by the instantaneous vertex (Eqs. (24), (25) and (26)) divided by the light cone energy denominator between the initial and final states (which is equal to  $\Delta_{02}^-$  in (133) or (138)).

#### IV. RESULTS

Let us first collect the UV-divergent pieces of our results and show that they can be absorbed into a renormalization of the QCD coupling constant. The pole part of the quark wave function renormalization constant (47) is

$$Z_q^{\text{pole}}(k^+ = \xi p^+) = 1 + \frac{g^2 C_F}{8\pi^2} \left( \frac{1}{\varepsilon_{\overline{\text{MS}}}} + \ln \mu^2 \right) \left[ \left( \frac{3}{2} + 2 \log(\alpha/\xi) \right) \right] + \dots \quad (143)$$

Note the presence of the longitudinal soft cutoff  $\alpha$  from the integration over the momentum fractions in the UV-divergent term. This mixing of divergences is a well known annoying aspect of light cone perturbation theory. The UV-pole part of the gluon wave function renormalization is (68)

$$Z_g^{\text{pole}}(k^+ = \xi p^+) = 1 + \frac{g^2}{8\pi^2} \left( \frac{1}{\varepsilon_{\overline{\text{MS}}}} + \ln \mu^2 \right) \left[ \left( \frac{11}{6} + 2 \log(\alpha/\xi) \right) C_A - \frac{2T_F N_F}{3} \right] + \mathcal{O}(g^4) \quad (144)$$

The UV-divergent part of the splitting wave function, with UV-divergent parts from the final state propagator correction diagrams (a), (b), (c) (Eqs. (54) and (67)) and the vertex correction diagrams (e), (d), (f) and (g) (Eqs. (98), (128)) is

$$\begin{aligned} \psi_{\text{pole}}^{q \rightarrow qq} &= \psi_{\text{LO}}^{q \rightarrow qq} \left[ 1 + \frac{g^2}{8\pi^2} \left( \frac{1}{\varepsilon_{\overline{\text{MS}}}} + \ln \mu^2 \right) \left\{ \left( C_F - \frac{C_A}{2} \right) \left[ -\frac{3}{2} + \ln(1-z) - 2 \ln \alpha \right] \right. \right. \\ &\quad \left. \left. + \frac{C_A}{2} \left[ -\frac{3}{2} - 4 \ln \alpha + \ln(1-z) + 2 \ln z \right] \right\} + \left[ Z_g^{\text{pole}}(z) - 1 \right] + \left[ Z_q^{\text{pole}}(1-z) - 1 \right] \right]. \quad (145) \end{aligned}$$

From these the combination

$$\frac{\sqrt{Z_q(1)}}{\sqrt{Z_q(1-z)}\sqrt{Z_g(z)}} \psi^{q \rightarrow qq} = \psi_{\text{LO}}^{q \rightarrow qq} \left[ 1 + \frac{g^2}{16\pi^2} \left( \frac{11}{6} C_A - \frac{2T_F N_F}{3} \right) \left( \frac{1}{\varepsilon_{\overline{\text{MS}}}} + \ln \mu^2 \right) + \mathcal{O}(g^4) \right] \quad (146)$$

is independent of the soft regulator  $\alpha$  and can be absorbed into a replacement of the coupling  $g$  in  $\psi_{\text{LO}}^{q \rightarrow qq}$  by a renormalized running coupling:

$$g_R(Q^2) = g \left[ 1 + \frac{g^2}{16\pi^2} \left( \frac{11}{6} C_A - \frac{2T_F N_F}{3} \right) \left( \frac{1}{\varepsilon_{\overline{\text{MS}}}} + \ln \frac{\mu^2}{Q^2} \right) \right]. \quad (147)$$

We will not repeat the expressions for the UV finite parts here. The finite parts of the quark and gluon wavefunction renormalization constants can be found in Eqs. (47) and (69). The light cone wave function is obtained by summing the contributions in Eqs. (54), (67), (99) and (129). The finite terms contain single logarithmic, double logarithmic,

and power like soft divergences in terms of the longitudinal cut-off parameter  $\alpha$ . In the context of low- $x$  QCD, the single logarithmic divergences can be dealt by an appropriate low- $x$  evolution equation at the cross-section level (see e.g. [15, 41–43, 46]). As could have been expected, the double logarithmic terms cancel each other in Eqs. (54), (67), (99) and (129). What remains, however, is a power law infrared divergence  $\sim 1/\alpha$ . The appearance of such divergences is a well known troublesome feature of calculations in light cone gauge. Without performing a full cross section calculation it is not fully possible to say whether this term would cancel in the final result. It would also be interesting to study further whether the appearance of such a term is related to our implementation of the FDH scheme for regulating the UV divergences. This could be done e.g. by calculating the same loop diagram in the conventional dimensional regularization scheme.

## V. DISCUSSION

Let us now briefly return to the question of applications for the results obtained here. As stated earlier, the primary motivation for the light cone wave function formulation is for calculations off an (potentially nonperturbatively strong) classical field target in the high energy limit. We have here obtained the  $qg$  final state wave function to order  $g^3$ , and the  $ggg$ ,  $gq\bar{q}$  one to order  $g^2$ . These are sufficient to calculate to order  $g^4$ , i.e. to NLO, cross sections for gluon emission from a quark probe. A simple example would be the gluon brehmsstrahlung process  $q\gamma^* \rightarrow qg$ , e.g. the conventional DIS process. Another example, where the only increase in complexity would be on the target side, would be the process  $qg^* \rightarrow qg$ , i.e. a dihadron production in forward proton-nucleus collisions [47, 48] to NLO.

There are other calculations where the results obtained here would be useful, but that would require also the quark and gluon wave function renormalization to order  $g^4$ . This would be the case e.g. for the NLO DGLAP splitting functions [49] (or the quark anomalous dimension to 2 loops). A rederivation of the NLO BK equation would also require a similar expression for a quark-antiquark dipole, but only in the soft gluon limit  $z \rightarrow 0$ . The wave function renormalization constant can be obtained from the state normalization constraint, i.e. from the square of the 3-particle final state wave functions obtained in this paper, and an interference term between the LO and NLO 1-gluon emission wave functions also written down here. There is no shortage of interesting things to calculate.

An important goal of this paper has been to formulate the LCPT rules in helicity space, independently of spinor representation, and demonstrate their use. We have found that this is often not done in the literature, but presents a major technological improvement for loop calculations, replacing the Dirac algebra by simple helicity sums. We believe that this will make many calculations such as the one recently performed in [27] technically simpler. As a part of our work we rederived the QCD beta function in LCPT [11]. More importantly we also extracted the finite parts of the one loop wave function correction diagrams which, to our knowledge, have not appeared in the previous literature.

## Acknowledgments

We are grateful to H. Mäntysaari and R. Venugopalan for discussions. This work has been supported by the Academy of Finland, projects 267321, 273464 and 303756 and by the European Research Council, grants ERC-2011-StG-279579 and ERC-2015-CoG-681707 and by the Ministerio de Ciencia e Innovacion of Spain under project FPA2014-58293-C2-1-P and the Xunta de Galicia - Strategic Unit AGRUP2015/11.

## Appendix A: Loop integrals

We work in the four dimensional helicity (FDH) scheme, where all polarization vectors, the momenta of the observed particles, as well as the helicity sums (or Dirac matrix algebra in the numerator) are kept in four dimensions. Although we keep all the spins in 4 spacetime dimensions, we regularize UV divergences by integrating over the momenta of all particles in  $d$  dimensions. Consequently the integral measure appearing in Eq. (10) is replaced by

$$\int \widetilde{d}k \rightarrow \frac{\mu^{2-d_\perp}}{2\pi} \int \frac{dk^+}{2k^+} \int \frac{d^{d_\perp} \mathbf{k}}{(2\pi)^{d_\perp}} \quad \text{with} \quad k^i k^j \rightarrow \frac{\delta^{ij}}{d_\perp} \mathbf{k}^2, \quad (\text{A1})$$

where the transverse integral is dimensionally regularized near two dimensions  $d_\perp = 2 - 2\varepsilon$ , and an arbitrary scale  $\mu$  is introduced so that the transverse integrals preserve their natural dimensions.

At one loop order, we need the following set of transverse integrals in  $d_\perp$  dimensions:

$$\mu^{2\varepsilon} \int \frac{d^{2-2\varepsilon} \mathbf{k}}{(2\pi)^{2-2\varepsilon}} \frac{1}{\mathbf{k}^2 + M^2} = \frac{\Gamma(\varepsilon)}{(4\pi)^{1-\varepsilon}} \left( \frac{\mu^2}{M^2} \right)^\varepsilon \quad (\text{A2})$$

$$\mu^{2\varepsilon} \int \frac{d^{2-2\varepsilon} \mathbf{k}}{(2\pi)^{2-2\varepsilon}} \frac{1}{(\mathbf{k}^2 + M^2)^2} = \frac{1}{M^2} \frac{\varepsilon \Gamma(\varepsilon)}{(4\pi)^{1-\varepsilon}} \left( \frac{\mu^2}{M^2} \right)^\varepsilon \quad (\text{A3})$$

$$\mu^{2\varepsilon} \int \frac{d^{2-2\varepsilon} \mathbf{k}}{(2\pi)^{2-2\varepsilon}} \frac{\mathbf{k}^2}{\mathbf{k}^2 + M^2} = -M^2 \frac{\Gamma(\varepsilon)}{(4\pi)^{1-\varepsilon}} \left( \frac{\mu^2}{M^2} \right)^\varepsilon \quad (\text{A4})$$

$$\mu^{2\varepsilon} \int \frac{d^{2-2\varepsilon} \mathbf{k}}{(2\pi)^{2-2\varepsilon}} \frac{\mathbf{k}^2}{(\mathbf{k}^2 + M^2)^2} = \frac{\Gamma(\varepsilon)(1-\varepsilon)}{(4\pi)^{1-\varepsilon}} \left( \frac{\mu^2}{M^2} \right)^\varepsilon \quad (\text{A5})$$

$$\mu^{2\varepsilon} \int \frac{d^{2-2\varepsilon} \mathbf{k}}{(2\pi)^{2-2\varepsilon}} \frac{k^i k^j}{(\mathbf{k}^2 + M^2)^2} = \frac{\Gamma(\varepsilon) \delta^{ij}}{2(4\pi)^{1-\varepsilon}} \left( \frac{\mu^2}{M^2} \right)^\varepsilon. \quad (\text{A6})$$

For the computation of one loop vertex corrections with 3 external legs we need the generic integral

$$I_3(\mathbf{p}, \mathbf{q}, \mathbf{k}, M) = \mu^{2\varepsilon} \int \frac{d^{2-2\varepsilon} \mathbf{m}}{(2\pi)^{2-2\varepsilon}} \frac{m^i (m-p)^j (m-q)^k}{\mathbf{m}^2 \left[ (\mathbf{m}-\mathbf{k})^2 + M^2 \right]}. \quad (\text{A7})$$

This can be Feynman parametrized as

$$I_3(\mathbf{p}, \mathbf{q}, \mathbf{k}, M) = \int_0^1 dx \int \frac{d^{2-2\varepsilon} \mathbf{m}}{(2\pi)^{2-2\varepsilon}} \frac{\mu^{2\varepsilon} m^i (m-p)^j (m-q)^k}{\left[ (1-x)\mathbf{m}^2 + x \left( (\mathbf{m}-\mathbf{k})^2 + M^2 \right) \right]^2} \quad (\text{A8})$$

and with a variable change  $\mathbf{r} \equiv \mathbf{m} - x\mathbf{k}$ , the integral  $I_3$  becomes

$$I_3(\mathbf{p}, \mathbf{q}, \mathbf{k}, M) = \int_0^1 dx \mu^{2\varepsilon} \int \frac{d^{2-2\varepsilon} \mathbf{r}}{(2\pi)^{2-2\varepsilon}} \frac{(r+xk)^i (r+xk-p)^j (r+xk-q)^k}{\left[ \mathbf{r}^2 + x(1-x)\mathbf{k}^2 + xM^2 \right]^2}. \quad (\text{A9})$$

At this point what survives is a UV finite part

$$I_3^{\text{finite}} = \frac{\varepsilon \Gamma(\varepsilon) \mu^{2\varepsilon}}{(4\pi)^{1-\varepsilon}} \int_0^1 dx \frac{xk^i (xk-p)^j (xk-q)^k}{\left[ x(1-x)\mathbf{k}^2 + xM^2 \right]^{1+\varepsilon}} \quad (\text{A10})$$

and a UV divergent one

$$I_3^{\text{pole}} = \frac{\Gamma(\varepsilon)}{2(4\pi)^{1-\varepsilon}} \int_0^1 dx \left( xk^i \delta^{jk} + (xk-p)^j \delta^{ik} + (xk-q)^k \delta^{ij} \right) \left( \frac{\mu^2}{x(1-x)\mathbf{k}^2 + xM^2} \right)^\varepsilon. \quad (\text{A11})$$

Expanding the integrands in (A10) and (A11) in powers of  $\varepsilon$ , and performing the final elementary integrals we obtain

$$I_3(\mathbf{p}, \mathbf{q}, \mathbf{k}, M) = I_3^{\text{UV}}(\mathbf{p}, \mathbf{q}, \mathbf{k}) + I_3^{\text{finite}}(\mathbf{p}, \mathbf{q}, \mathbf{k}, M), \quad (\text{A12})$$

where the UV pole part is

$$I_3^{\text{UV}}(\mathbf{p}, \mathbf{q}, \mathbf{k}) = \frac{1}{16\pi} \left[ \frac{1}{\varepsilon_{\overline{\text{MS}}}} + \log \left( \frac{\mu^2}{\mathbf{n}^2} \right) \right] \left[ k^i \delta^{jk} + (k-2p)^j \delta^{ik} + (k-2q)^k \delta^{ij} \right], \quad (\text{A13})$$

and we have defined,  $1/\varepsilon_{\overline{\text{MS}}} = 1/\varepsilon - \gamma_E + \log(4\pi)$ , which correspond the standard modified minimal subtraction ( $\overline{\text{MS}}$ ) scheme choice. Here  $\mathbf{n}^2$  is an arbitrary scale at which one divides the logarithm between the pole and finite terms. The finite part simplifies to

$$I_3^{\text{finite}}(\mathbf{p}, \mathbf{q}, \mathbf{k}, M) = I_3^a + I_3^b, \quad (\text{A14})$$

where

$$I_3^a = \frac{1}{16\pi} \log\left(\frac{\mathbf{n}^2}{M^2}\right) \left[ k^i \delta^{jk} + (k-2p)^j \delta^{ik} + (k-2q)^k \delta^{ij} \right] + \frac{\log(1+\xi)}{4\pi M^2 \xi^3} \left[ (1+\xi)^2 \Delta_1^a + \xi(1+\xi) \Delta_2^a + \xi^2 \Delta_3^a \right] - \frac{(1+\xi) \log(1+\xi)}{8\pi \xi} \left[ \frac{(1+\xi)}{2\xi} \Delta_1^b + \Delta_2^b \right] + \mathcal{O}(\varepsilon) \quad (\text{A15})$$

and

$$I_3^b = -\frac{1}{4\pi M^2 \xi} \left[ \frac{(2+3\xi)}{2\xi} \Delta_1^a + \Delta_2^a \right] + \frac{1}{8\pi} \left[ \frac{(1+2\xi)}{2\xi} \Delta_1^b + 2\Delta_2^b \right] + \mathcal{O}(\varepsilon) \quad (\text{A16})$$

with  $\xi = \mathbf{k}^2/M^2$  and

$$\begin{aligned} \Delta_1^a &= k^i k^j k^k \\ \Delta_2^a &= -k^i (k^j q^k + k^k p^j) \\ \Delta_3^a &= k^i p^j q^k \\ \Delta_1^b &= k^i \delta^{jk} + k^j \delta^{ik} + k^k \delta^{ij} \\ \Delta_2^b &= -\left( p^j \delta^{ik} + q^k \delta^{ij} \right). \end{aligned} \quad (\text{A17})$$

- 
- [1] J. B. Kogut and D. E. Soper, *Quantum electrodynamics in the infinite momentum frame*, *Phys. Rev.* **D1** (1970) 2901.
- [2] J. Bjorken, J. B. Kogut and D. E. Soper, *Quantum electrodynamics at infinite momentum: Scattering from an external field*, *Phys. Rev.* **D3** (1971) 1382.
- [3] G. P. Lepage and S. J. Brodsky, *Exclusive processes in perturbative quantum chromodynamics*, *Phys. Rev.* **D22** (1980) 2157.
- [4] S. J. Brodsky, H.-C. Pauli and S. S. Pinsky, *Quantum chromodynamics and other field theories on the light cone*, *Phys. Rept.* **301** (1998) 299 [arXiv:hep-ph/9705477 [hep-ph]].
- [5] E. Iancu and R. Venugopalan in *Quark gluon plasma* (R. Hwa and X. N. Wang, eds.). World Scientific, 2003. arXiv:hep-ph/0303204.
- [6] H. Weigert, *Evolution at small  $x_{\text{Bj}}$ : The color glass condensate*, *Prog. Part. Nucl. Phys.* **55** (2005) 461 [arXiv:hep-ph/0501087].
- [7] F. Gelis, E. Iancu, J. Jalilian-Marian and R. Venugopalan, *The color glass condensate*, *Ann. Rev. Nucl. Part. Sci.* **60** (2010) 463 [arXiv:1002.0333 [hep-ph]].
- [8] J. L. Albacete and C. Marquet, *Gluon saturation and initial conditions for relativistic heavy ion collisions*, *Prog. Part. Nucl. Phys.* **76** (2014) 1 [arXiv:1401.4866 [hep-ph]].
- [9] C. B. Thorn, *Asymptotic freedom in the infinite momentum frame*, *Phys. Rev.* **D20** (1979) 1934.
- [10] D. Mustaki, S. Pinsky, J. Shigemitsu and K. Wilson, *Perturbative renormalization of null plane QED*, *Phys. Rev.* **D43** (1991) 3411.
- [11] R. J. Perry, A. Harindranath and W.-M. Zhang, *Asymptotic freedom in Hamiltonian light front quantum chromodynamics*, *Phys. Lett.* **B300** (1993) 8.
- [12] W.-M. Zhang and A. Harindranath, *Role of longitudinal boundary integrals in light front QCD*, *Phys. Rev.* **D48** (1993) 4868 [arXiv:hep-th/9302119 [hep-th]].
- [13] W.-M. Zhang and A. Harindranath, *Light front QCD. 2: Two component theory*, *Phys. Rev.* **D48** (1993) 4881.
- [14] A. Harindranath and W.-M. Zhang, *Light front QCD. 3: Coupling constant renormalization*, *Phys. Rev.* **D48** (1993) 4903.
- [15] I. Balitsky and G. A. Chirilli, *Next-to-leading order evolution of color dipoles*, *Phys. Rev.* **D77** (2008) 014019 [arXiv:0710.4330 [hep-ph]].
- [16] I. Balitsky and G. A. Chirilli, *Rapidity evolution of Wilson lines at the next-to-leading order*, *Phys. Rev.* **D88** (2013) 111501 [arXiv:1309.7644 [hep-ph]].
- [17] A. Kovner, M. Lublinsky and Y. Mulian, *Jalilian-Marian, Iancu, McLerran, Weigert, Leonidov, Kovner evolution at next to leading order*, *Phys. Rev.* **D89** (2014) 061704 [arXiv:1310.0378 [hep-ph]].
- [18] I. Balitsky and A. V. Grabovsky, *NLO evolution of 3-quark Wilson loop operator*, *JHEP* **01** (2015) 009 [arXiv:1405.0443 [hep-ph]].
- [19] G. Beuf, *Improving the kinematics for low- $x$  QCD evolution equations in coordinate space*, *Phys. Rev.* **D89** (2014) 074039 [arXiv:1401.0313 [hep-ph]].
- [20] T. Lappi and H. Mäntysaari, *Direct numerical solution of the coordinate space Balitsky-Kovchegov equation at next to leading order*, *Phys. Rev.* **D91** (2015) 074016 [arXiv:1502.02400 [hep-ph]].
- [21] E. Iancu, J. D. Madrigal, A. H. Mueller, G. Soyez and D. N. Triantafyllopoulos, *Resumming double logarithms in the QCD evolution of color dipoles*, *Phys. Lett.* **B744** (2015) 293 [arXiv:1502.05642 [hep-ph]].

- [22] E. Iancu, J. D. Madrigal, A. H. Mueller, G. Soyez and D. N. Triantafyllopoulos, *Collinearly-improved BK evolution meets the HERA data*, *Phys. Lett.* **B750** (2015) 643 [arXiv:1507.03651 [hep-ph]].
- [23] T. Lappi and H. Mäntysaari, *Next-to-leading order Balitsky-Kovchegov equation with resummation*, *Phys. Rev.* **D93** (2016) 094004 [arXiv:1601.06598 [hep-ph]].
- [24] M. Lublinsky and Y. Mulian, *High energy QCD at NLO: from light-cone wave function to JIMWLK evolution*, arXiv:1610.03453 [hep-ph].
- [25] G. Beuf, *NLO corrections for the dipole factorization of DIS structure functions at low x*, *Phys. Rev.* **D85** (2012) 034039 [arXiv:1112.4501 [hep-ph]].
- [26] I. Balitsky and G. A. Chirilli, *Photon impact factor and  $k_t$ -factorization for DIS in the next-to-leading order*, *Phys. Rev.* **D87** (2013) 014013 [arXiv:1207.3844 [hep-ph]].
- [27] G. Beuf, *Dipole factorization for DIS at NLO I: Loop correction to the photon to quark-antiquark light-front wave-functions*, *Phys. Rev.* **D94** (2016) no. 5 054016 [arXiv:1606.00777 [hep-ph]].
- [28] T. Altinoluk and A. Kovner, *Particle production at high energy and large transverse momentum - 'the hybrid formalism' revisited*, *Phys. Rev.* **D83** (2011) 105004 [arXiv:1102.5327 [hep-ph]].
- [29] J. Jalilian-Marian and A. H. Rezaeian, *Hadron production in pA collisions at the LHC from the Color Glass Condensate*, *Phys. Rev.* **D85** (2012) 014017 [arXiv:1110.2810 [hep-ph]].
- [30] G. A. Chirilli, B.-W. Xiao and F. Yuan, *Inclusive hadron productions in pA collisions*, *Phys. Rev.* **D86** (2012) 054005 [arXiv:1203.6139 [hep-ph]].
- [31] A. M. Stasto, B.-W. Xiao and D. Zaslavsky, *Towards the test of saturation physics beyond leading logarithm*, *Phys. Rev. Lett.* **112** (2014) 012302 [arXiv:1307.4057 [hep-ph]].
- [32] Z.-B. Kang, I. Vitev and H. Xing, *Next-to-leading order forward hadron production in the small-x regime: rapidity factorization*, *Phys. Rev. Lett.* **113** (2014) 062002 [arXiv:1403.5221 [hep-ph]].
- [33] T. Altinoluk, N. Armesto, G. Beuf, A. Kovner and M. Lublinsky, *Single-inclusive particle production in proton-nucleus collisions at next-to-leading order in the hybrid formalism*, *Phys. Rev.* **D91** (2015) 094016 [arXiv:1411.2869 [hep-ph]].
- [34] A. Ayala, M. Hentschinski, J. Jalilian-Marian and M. E. Tejeda-Yeomans, *Polarized 3 parton production in inclusive DIS at small x*, *Phys. Lett.* **B761** (2016) 229 [arXiv:1604.08526 [hep-ph]].
- [35] R. Boussarie, A. V. Grabovsky, L. Szymanowski and S. Wallon, *Impact factor for high-energy two and three jets diffractive production*, *JHEP* **09** (2014) 026 [arXiv:1405.7676 [hep-ph]].
- [36] R. Boussarie, A. V. Grabovsky, L. Szymanowski and S. Wallon, *On the one loop  $\gamma^{(*)} \rightarrow q\bar{q}$  impact factor and the exclusive diffractive cross sections for the production of two or three jets*, *JHEP* **11** (2016) 149 [arXiv:1606.00419 [hep-ph]].
- [37] H. C. Pauli, *A compendium of light cone quantization*, *Nucl. Phys. Proc. Suppl.* **90** (2000) 259 [arXiv:hep-ph/0103106 [hep-ph]]. [259(2000)].
- [38] Y. V. Kovchegov and E. Levin, *Quantum chromodynamics at high energy*, vol. 33 of *Cambridge monographs on particle physics, nuclear physics and cosmology*. Cambridge University Press, 2012.
- [39] Z. Bern and D. A. Kosower, *The computation of loop amplitudes in gauge theories*, *Nucl. Phys.* **B379** (1992) 451.
- [40] Z. Bern, A. De Freitas, L. J. Dixon and H. L. Wong, *Supersymmetric regularization, two loop QCD amplitudes and coupling shifts*, *Phys. Rev.* **D66** (2002) 085002 [arXiv:hep-ph/0202271 [hep-ph]].
- [41] G. A. Chirilli, B.-W. Xiao and F. Yuan, *One-loop factorization for inclusive hadron production in pA collisions in the saturation formalism*, *Phys. Rev. Lett.* **108** (2012) 122301 [arXiv:1112.1061 [hep-ph]].
- [42] I. Balitsky, *Operator expansion for high-energy scattering*, *Nucl. Phys.* **B463** (1996) 99 [arXiv:hep-ph/9509348].
- [43] Y. V. Kovchegov, *Small-x  $F_2$  structure function of a nucleus including multiple pomeron exchanges*, *Phys. Rev.* **D60** (1999) 034008 [arXiv:hep-ph/9901281].
- [44] W. B. Kilgore, *Regularization schemes and higher order corrections*, *Phys. Rev.* **D83** (2011) 114005 [arXiv:1102.5353 [hep-ph]].
- [45] R. Boughezal, K. Melnikov and F. Petriello, *The four-dimensional helicity scheme and dimensional reconstruction*, *Phys. Rev.* **D84** (2011) 034044 [arXiv:1106.5520 [hep-ph]].
- [46] Y. V. Kovchegov, *Unitarization of the BFKL pomeron on a nucleus*, *Phys. Rev.* **D61** (2000) 074018 [arXiv:hep-ph/9905214].
- [47] C. Marquet, *Forward inclusive dijet production and azimuthal correlations in pA collisions*, *Nucl. Phys.* **A796** (2007) 41 [arXiv:0708.0231 [hep-ph]].
- [48] T. Lappi and H. Mäntysaari, *Forward dihadron correlations in deuteron-gold collisions with the Gaussian approximation of JIMWLK*, *Nucl. Phys.* **A908** (2013) 51 [arXiv:1209.2853 [hep-ph]].
- [49] G. Curci, W. Furmanski and R. Petronzio, *Evolution of parton densities beyond leading order: The nonsinglet case*, *Nucl. Phys.* **B175** (1980) 27.