

**This is an electronic reprint of the original article.
This reprint *may differ* from the original in pagination and typographic detail.**

Author(s): Laanto, Elina; Penttinen, Reetta; Bamford, Jaana; Sundberg, Lotta-Riina

Title: Comparing the different morphotypes of a fish pathogen - implications for key virulence factors in *Flavobacterium columnare*

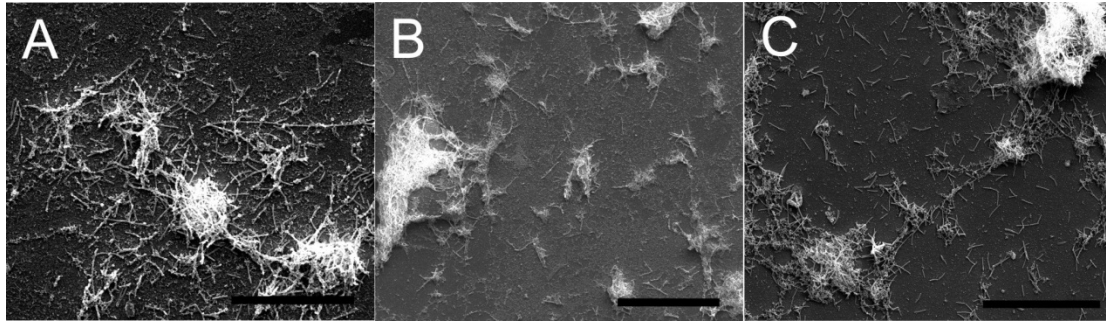
Year: 2014

Version:

Please cite the original version:

Laanto, E., Penttinen, R., Bamford, J., & Sundberg, L.-R. (2014). Comparing the different morphotypes of a fish pathogen - implications for key virulence factors in *Flavobacterium columnare*. *BMC Microbiology*, 14(170), 1-11.
<https://doi.org/10.1186/1471-2180-14-170>

All material supplied via JYX is protected by copyright and other intellectual property rights, and duplication or sale of all or part of any of the repository collections is not permitted, except that material may be duplicated by you for your research use or educational purposes in electronic or print form. You must obtain permission for any other use. Electronic or print copies may not be offered, whether for sale or otherwise to anyone who is not an authorised user.



Additional file 2 (.pdf)

A wider view of a typical sample of the planktonic cells from the three morphotypes visualised under HR-SEM

Panel A: Rhizoid morphotype cells. Panel B: Rough morphotype cells. Panel C: Soft morphotype cells. The scale bar in A was 30 μm and in B and C, 40 μm .