
This is an electronic reprint of the original article.
This reprint *may differ* from the original in pagination and typographic detail.

Author(s): Boratynski, Zbyszek; Alves, Paulo C; Berto, Stefano; Koskela, Esa; Mappes, Tapio;
Melo-Ferreira, José

Title: Introgression of mitochondrial DNA among *Myodes voles*: consequences for energetics?

Year: 2011

Version:

Please cite the original version:

Boratynski, Z., Alves, P., Berto, S., Koskela, E., Mappes, T., & Melo-Ferreira, J. (2011). Introgression of mitochondrial DNA among *Myodes voles*: consequences for energetics?. *BMC Evolutionary Biology*, 11:355. Retrieved from <http://www.biomedcentral.com/1471-2148/11/355>

All material supplied via JYX is protected by copyright and other intellectual property rights, and duplication or sale of all or part of any of the repository collections is not permitted, except that material may be duplicated by you for your research use or educational purposes in electronic or print form. You must obtain permission for any other use. Electronic or print copies may not be offered, whether for sale or otherwise to anyone who is not an authorised user.

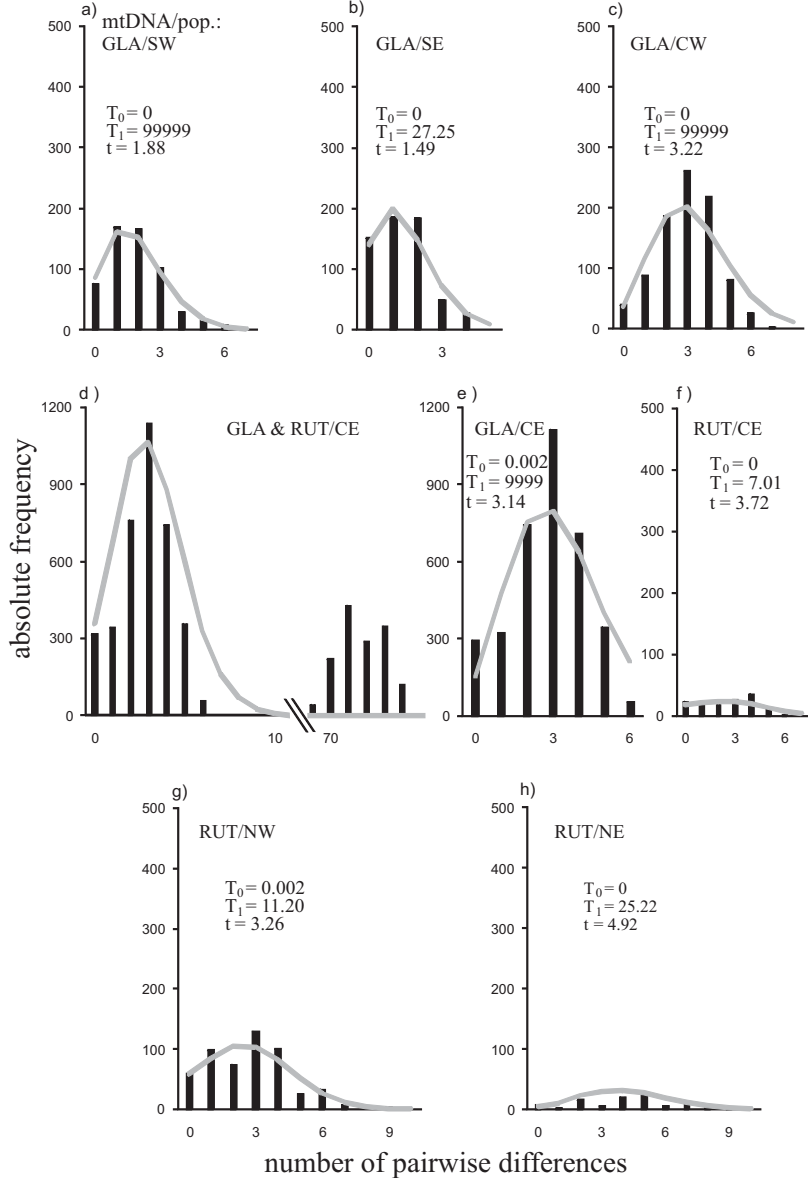


Figure S1. Observed (bars) and expected (gray lines) mismatch distributions of Finnish populations of bank voles *Myodes glareolus*. a), b) and c) populations of bank voles with native mtDNA type (GLA); d), e) and f) Sotkamo population with both mtDNA types and g) and h) populations of bank voles with red voles mtDNA type (RUT). See Fig. 1 for information about localizations of populations. Values of the expansion parameters are only shown if the assumptions of the Sudden Expansion Model are fulfilled.