

**JYX**



**This is a self-archived version of an original article. This version may differ from the original in pagination and typographic details.**

**Author(s):** Escobedo, Miguel Àngel; Lappi, Tuomas

**Title:** Dipole picture and the nonrelativistic expansion

**Year:** 2020

**Version:** Published version

**Copyright:** © The Authors, 2020

**Rights:** CC BY 4.0

**Rights url:** <https://creativecommons.org/licenses/by/4.0/>

**Please cite the original version:**

Escobedo, M. À., & Lappi, T. (2020). Dipole picture and the nonrelativistic expansion. *Physical Review D*, 101(3), Article 034030. <https://doi.org/10.1103/PhysRevD.101.034030>

## Dipole picture and the nonrelativistic expansion

Miguel Ángel Escobedo 

*Department of Physics, University of Jyväskylä, P.O. Box 35, FI-40014 Finland  
and Instituto Galego de Física de Altas Enerxías (IGFAE),  
Universidade de Santiago de Compostela, E-15782 Galicia, Spain*

Tuomas Lappi 

*Department of Physics, University of Jyväskylä, P.O. Box 35, FI-40014 Finland  
and Helsinki Institute of Physics, University of Helsinki, P.O. Box 64, 00014 Finland*



(Received 11 November 2019; accepted 24 January 2020; published 24 February 2020)

We study exclusive quarkonium production in the dipole picture at next-to-leading-order (NLO) accuracy, using the nonrelativistic expansion for the quarkonium wave function. This process offers one of the best ways to obtain information about gluon distributions at small  $x$ , in ultraperipheral heavy ion collisions and in deep inelastic scattering. The quarkonium light-cone wave functions needed in the dipole picture have typically been available only at tree level, either in phenomenological models or in the nonrelativistic limit. In this paper, we discuss the compatibility of the dipole approach and the nonrelativistic expansion and compute NLO relativistic corrections to the quarkonium light-cone wave function in light-cone gauge. Using these corrections, we recover results for the NLO decay width of quarkonium to  $e^+e^-$ , and we check that the nonrelativistic expansion is consistent with Efremov-Radyushkin-Brodsky-Lepage evolution and with Balitsky-Jalilian-Marian-Iancu-McLerran-Weigert-Leonidov-Kovner evolution of the target. The results presented here will allow computing the exclusive quarkonium production rate at NLO once the one-loop photon wave function with massive quarks, currently under investigation, is known.

DOI: [10.1103/PhysRevD.101.034030](https://doi.org/10.1103/PhysRevD.101.034030)

### I. INTRODUCTION

The partonic structure of hadrons and nuclei in the limit of high collision energies, or equivalently small momentum fractions  $x$ , is poorly constrained by existing experimental data. It is believed that at high enough energies the properties of small- $x$  gluons are dominated by gluon saturation, i.e., the dominance of nonlinear interactions in the gluon field. In order to fully understand the behavior of small  $x$  gluons, a variety of different experimental measurements is needed. Of particular importance here is exclusive quarkonium production mediated by real or virtual photons. Such measurements are currently made in ultraperipheral heavy ion collisions [1] at the LHC and at the Relativistic Heavy Ion Collider. Exclusive measurements will also be an important part of the program at a future electron-ion-collider [2]. Exclusive quarkonium production is an important process for several reasons. As an exclusive process, it depends on the gluon density

quadratically and is thus more sensitive to nonlinearities than inclusive cross sections. Exclusive processes can, depending on exactly what final state of the target one measures, be sensitive to separately the average and the fluctuations of the gluon density in the target [3–6]. On the other hand, the heavy quark masses cut away nonperturbative long distance contributions and make the use of a weak coupling framework safer than for light quark processes [7,8].

The dipole picture of deep inelastic scattering (DIS) [9–13] (a specialization of the light-cone perturbation theory framework of Ref. [14] to the DIS process) provides a convenient framework to study deep inelastic scattering at high energy. In particular, one expresses both inclusive and exclusive cross sections in terms of the same fundamental quantity, the dipole scattering amplitude, which gives this picture more predictive power than collinear factorization. With light quarks, several recent advances have taken calculations of inclusive [15–17] and diffractive [18,19] observables to NLO accuracy, and it would be important to do the same for heavy quark cross sections.

At leading order, the physical picture of exclusive scattering in the dipole picture is the following [20]: a virtual photon fluctuates into a quark-antiquark pair that interacts with the nucleus elastically with a cross section  $\sigma_{q\bar{q}}$ . The resulting dipole can, later on, recombine into a

---

*Published by the American Physical Society under the terms of the Creative Commons Attribution 4.0 International license. Further distribution of this work must maintain attribution to the author(s) and the published article's title, journal citation, and DOI. Funded by SCOAP<sup>3</sup>.*

quarkonium state. In this framework, the information about the quarkonium is encoded in its light-cone wave function (LCWF), which encodes the overlap of the quarkonium state with various eigenstates of the free light-cone QCD Hamiltonian.

In recent phenomenological applications (following e.g., Ref. [21]), one commonly uses phenomenological parametrizations for the LCWF, such as the “boosted Gaussian” or “GaussLC.” A more model-independent approach would be to exploit the fact that heavy quarkonium is a nonrelativistic system. In such a system, the typical 3-momentum of quarks is of the order of  $mv$ , where  $m$  the heavy quark mass<sup>1</sup> and  $v$  is the typical speed of the heavy quarks around the center of mass (which is much smaller than the speed of light). The mass of the heavy quarkonium state  $M_{HQ}$  is such that the binding energy is small:  $M_{HQ} - 2m \sim mv^2 \ll m$ . Another important energy scale is  $\Lambda_{\text{QCD}}$ , which marks the transition between perturbative and nonperturbative physics in QCD.

Using an effective field theory approach, nonrelativistic QCD (NRQCD) [22] factorization formulas for some processes can be proven. The NRQCD approach has been quite successful, although there is some tension with polarization related observables in charmonium (for a more recent review, see Ref. [23]). Diffractive quarkonium production has been studied in the nonrelativistic limit in both a covariant [24] theory approach and in a light-cone formalism [20]. Also, velocity expansion corrections have been discussed in Ref. [25], although they are a next-to-next-to-leading-order (NNLO) effect in  $\alpha_s(mv)$ . However, next-to-leading-order (NLO) corrections in  $\alpha_s(m)$  due to radiative corrections to the computation in Refs. [20,24] are still missing.

In this paper, we are going to compute the leading-order (LO) relativistic corrections to the quarkonium light-cone wave function in the light-cone gauge such that it can be used to obtain NLO predictions in the dipole picture. This will allow us to compute the radiative NLO corrections to the leading nonrelativistic result. We are going to check that, using our results for the quarkonium light-cone wave function, we can obtain the well-known literature result of the NLO correction to quarkonium decay to  $e^+e^-$  [26]. We will then show that the light-cone distribution amplitude (that can be obtained in the limit of small transverse coordinate) fulfills the Efremov-Radyushkin-Brodsky-Lepage (ERBL) evolution equation [27,28] (a NRQCD study of the same quantity can be found in Refs. [29–31]). We are going to show that, using this wave function, it is possible to compute NLO corrections to exclusive quarkonium production by analyzing the divergence structure and checking that it is consistent with Balitsky-

Jalilian-Marian-Iancu-McLerran-Weigert-Leonidov-Kovner (B-JIMWLK) evolution [32–42] of the target. A more complete phenomenological analysis will be possible when the NLO corrections to the photon wave function with massive quarks, currently under investigation, become available.

The paper is organized as follows. In the next section, we review the specific formulas of the dipole approach needed for this computation and fix the notation. In Sec. III, we are going to define the procedure to obtain the nonrelativistic wave function and its corrections, and we are going to compute the relativistic contribution. In Sec. IV, we are going to show that we can use the previous results to obtain the light-cone distribution amplitude, and we are going to check that it satisfies the ERBL evolution equation. Section V provides a strong cross-check of our results by applying them to the computation of the radiative corrections to S-wave quarkonium decay into leptons. In Sec. VI, we study the divergence structure of exclusive quarkonium production in both the dilute and the nondilute limits. Finally, we conclude in Sec. VII.

## II. DIPOLE APPROACH

We are going to perform the computations using light-cone coordinates; for a given vector  $p^\mu$ , they are defined as

$$p^+ = \frac{p^0 + p^3}{\sqrt{2}}, \quad p^- = \frac{p^0 - p^3}{\sqrt{2}}, \quad (1)$$

which implies

$$p^0 = \frac{p^+ + p^-}{\sqrt{2}} \quad p^3 = \frac{p^+ - p^-}{\sqrt{2}}. \quad (2)$$

As a consequence, the momentum integration measure takes the form

$$d^4 p = dp^+ dp^- d^2 p_\perp, \quad (3)$$

and the scalar product of two vectors in these coordinates is

$$p \cdot q = p^+ q^- + p^- q^+ - \mathbf{p}_\perp \cdot \mathbf{q}_\perp. \quad (4)$$

It is useful to define the light-cone vectors

$$n^\mu = \frac{1}{\sqrt{2}}(1, 0, 0, 1) \quad (5)$$

and

$$\bar{n}^\mu = \frac{1}{\sqrt{2}}(1, 0, 0, -1), \quad (6)$$

such that

$$n \cdot \bar{n} = 1, \quad (7)$$

<sup>1</sup>In this paper, we use the pole mass in our computations. However, we note that in future phenomenological applications it might be convenient to translate the results to another scheme.

$$p^+ = \bar{n} \cdot p, \quad (8)$$

$$p^- = n \cdot p. \quad (9)$$

We also find it sometimes useful to separate from 4-momenta in the on-shell part, denoted by a hat,

$$p^\mu = \hat{p}^\mu + \bar{p}^\mu, \quad (10)$$

such that

$$\hat{p} = \left( p^+, \frac{p_\perp^2 + m^2}{2p^+}, \mathbf{p}_\perp \right). \quad (11)$$

In light-cone perturbation theory, the off-shell-ness is included in only the light-cone energy (– or  $\bar{n}^\mu$ -component) of the four-vector

$$\bar{p}^\mu = \frac{p^2 - m^2}{2p^+} \bar{n}^\mu. \quad (12)$$

In order to apply the dipole approach to exclusive quarkonium production, we are going to follow the discussion in Ref. [21]. We start with Eq. (12) there, which corresponds to the leading-order contribution, in the limit of no target recoil  $t = 0$ ,

$$\frac{d\sigma_{T,L}^{\gamma^*+N \rightarrow HQ+N}}{dt} = \frac{1}{16\pi} \left| \int d^2 r_\perp \int_0^1 \frac{dz}{4\pi} (\Psi_{HQ}^* \Psi_{\gamma^*})_{T,L} \sigma_{q\bar{q}} \right|^2, \quad (13)$$

where the subindex  $T$  or  $L$  refers respectively to a transverse or longitudinal polarization of the photon and vector meson.<sup>2</sup> Here,  $\Psi_{\gamma^*}$  and  $\Psi_{HQ}$  are respectively the light-cone wave functions of the photon and quarkonium, depending on the transverse coordinate separation  $r_\perp$  and  $p^+$  momentum fractions  $z, 1-z$  of the quark and antiquark in the meson. The properties of the gluon field of the target are encoded in the “dipole cross section”  $\sigma_{q\bar{q}}$ , which is, more properly speaking, twice the imaginary part of the forward elastic scattering amplitude of the quark-antiquark dipole with the target. Importantly for the predictive power of the framework, the same quantity appears in other cross sections, for both DIS and other high energy scattering processes. A graphical representation can be found in Fig. 1. The previous formula actually assumes that only the subspace of the Fock space  $q\bar{q}$  is relevant for the quarkonium light-cone wave function. A more general formula would involve a sum over all the possible Fock states of the quarkonium:

<sup>2</sup>The interaction with the target is eikonal; thus, the polarization of the meson is the same as that of the photon.

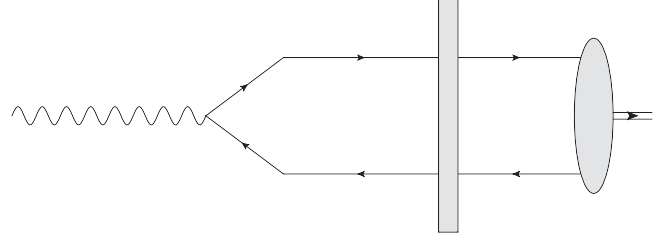


FIG. 1. Representation of the leading-order amplitude for exclusive quarkonium production in the dipole model. A virtual photon splits into a heavy quark-antiquark pair that later interacts with the nucleus (represented by a square box). After this interaction, the pair forms a quarkonium state (represented by a blob).

$$\begin{aligned} \frac{d\sigma_{T,L}^{\gamma^*+N \rightarrow HQ+N}}{dt} &= \frac{1}{16\pi} \left| \int d^2 r_\perp \int_0^1 \frac{dz}{4\pi} (\Psi_{HQ}^* \Psi_{\gamma^*})_{T,L}^{q\bar{q}} \sigma_{q\bar{q}} \right. \\ &\quad \left. + \int d^2 r_\perp \int_0^1 \frac{dz}{4\pi} (\Psi_{HQ}^* \Psi_{\gamma^*})_{T,L}^{q\bar{q}g} \sigma_{q\bar{q}g} + \dots \right|^2. \end{aligned} \quad (14)$$

Exclusive quarkonium production is a multiscale process. In the previous formula, we identify many different energy scales. First,  $Q$  is the virtuality of the photon and is encoded in its wave function. The saturation scale of the target  $Q_s$  is, in the previous formula, hidden inside the  $r$ -dependence of the amplitudes  $\sigma_{q\bar{q}}$  and  $\sigma_{q\bar{q}g}$ . Physically, it represents the typical size of the dipoles selected by the target. Dipoles much smaller than  $1/Q_s$  interact weakly due to “color transparency.” For dipoles larger than  $1/Q_s$ , the growth of the amplitude is limited by unitarity, i.e., gluon saturation, and ceases to compensate for the suppression from the photon and quarkonium wave functions. Finally, inside  $\Psi_{HQ}$ , there are hidden many scales related to quarkonium physics, namely the scales  $m, mv, mv^2$ , and  $\Lambda_{\text{QCD}}$ , which were discussed before. In this work, we are going to assume that  $Q_s, m \gg mv, \Lambda_{\text{QCD}}$ , and we are going to explore the physical consequences of this regime.

Details on how to obtain the light-cone wave function of quarkonium in this approximation will be given in the next section; however, we can explain the physical implications here. The quarkonium wave function is dominated by quarks that are moving with a nonrelativistic velocity. This implies that it extends over distances of order  $\frac{1}{mv}$  and it is not very sensitive to variations at smaller distance scales. Another consequence of the nonrelativistic nature of quarkonium is that at leading order  $\Psi_{HQ}$  only has support for values of  $z$  around  $\frac{1}{2}$ . Therefore,

$$\frac{d\sigma_{T,L}^{\gamma^*+N \rightarrow HQ+N}}{dt} \propto \frac{\left| \int \frac{d\lambda}{4\pi} \phi^{q\bar{q}} \right|^2}{16\pi} \left| \int d^2 r_\perp (\Psi_{\gamma^*})_{T,L} \sigma_{q\bar{q}} \right|_{z=\frac{1}{2}}^2, \quad (15)$$

where  $\phi^{q\bar{q}}$  is the leading-order light-cone wave function that only takes into account nonrelativistic contributions and  $\lambda = z - \frac{1}{2}$ . Extending this idea to higher orders, the quarkonium wave function for short distances  $\mathbf{x}_\perp \sim \frac{1}{m}$  fulfills

$$\int dz f(z) \Psi_{HQ}^n(z, \mathbf{x}_\perp) = \sum_{m,k} \int dz f(z) C_{n \leftarrow m}^k(z, \mathbf{x}_\perp) \left(\frac{\nabla}{m}\right)^k \times \int \frac{d\lambda}{4\pi} \phi^m(\lambda, \mathbf{0}). \quad (16)$$

In this formula, the indices  $n$  and  $m$  represent the particle content; for higher Fock states, the single two-particle relative coordinates  $z, \mathbf{x}_\perp$  are replaced by the appropriate variables. The notation  $\Psi_{HQ}$  refers to the full light-cone wave function of the quarkonium, while the  $\phi$ 's are the wave functions restricted to the case in which all particles are nonrelativistic (therefore,  $\lambda \ll 1$ ). Here,  $f(z)$  is just a test function written to represent the fact that the equality is only valid when integrating for  $z$ . At this stage, we are ignoring spin degrees of freedom in the notation, but we will be more explicit about this in the following sections. Note that each power of  $\left(\frac{\nabla}{M}\right)$  acting on  $\phi$  gives a suppression

of order  $v$  (in this equation,  $\nabla$  is a three-vector, such that  $\nabla = \nabla_\perp + i2m\lambda$ ). Due to the nonrelativistic nature of the quarkonium, the coefficients start with just a heavy quark-antiquark state, which is, to leading order, nonrelativistic,

$$C_{q\bar{q} \leftarrow q\bar{q}}^0 = 4\pi\delta\left(z - \frac{1}{2}\right) + \mathcal{O}(\alpha_s), \quad (17)$$

with transitions to higher Fock states entering at higher orders in perturbation theory.

$$C_{n \leftarrow m}^0|_{n \neq m} = 0 + \mathcal{O}(\alpha_s). \quad (18)$$

In this paper, we are going to argue that in order to compute exclusive quarkonium production at NLO only  $C_{q\bar{q} \leftarrow q\bar{q}}^0$  and  $C_{q\bar{q}g \leftarrow q\bar{q}}^0$  at order  $\alpha_s$  are needed, and we are going to compute them. The fact that the contributing Fock states at NLO are the  $q\bar{q}$  and  $q\bar{q}g$  ones is similar to other NLO calculations in the dipole picture (e.g., Refs. [15–19]). The additional feature in the case of the quarkonium is the way in which both are related to a common nonrelativistic bound state wave function. Taking into account these two Fock states, we can write the cross section as

$$\frac{d\sigma_{T,L}^{\gamma^*+N \rightarrow HQ+N}}{dt} = \frac{1}{16\pi} \left| \sum_{n,m,k} \left( \left(\frac{\nabla}{M}\right)^k \int \frac{d\lambda}{4\pi} \phi^m(\lambda, \mathbf{0}) \right) \int d^2r_\perp \int_0^1 \frac{dz}{4\pi} \left( (C_{n \leftarrow m}^k(z, \mathbf{r}_\perp))^* \Psi_{\gamma^*}^n \right)_{T,L}^n \sigma_n \right|^2. \quad (19)$$

These terms can be reorganized in such a way that we have an expansion that resembles a typical production process in NRQCD,

$$\frac{d\sigma_{T,L}^{\gamma^*+N \rightarrow HQ+N}}{dt} = \frac{1}{16\pi} \sum_{n,m,k,n',m',k'} \left( \int d^2r_\perp \int_0^1 \frac{dz}{4\pi} \left( (C_{n \leftarrow m}^k(z, \mathbf{r}_\perp))^* \Psi_{\gamma^*}^n \right)_{T,L}^n \sigma_n \int d^2r'_\perp \int_0^1 \frac{dz'}{4\pi} \left( C_{n' \leftarrow m'}^{k'}(z', \mathbf{r}'_\perp) \Psi_{\gamma^*}^{n'} \right)_{T,L}^{n'} \sigma_{n'}^* \right) \times \left( \left(\frac{\nabla}{m}\right)^k \int \frac{d\lambda}{4\pi} \phi^m(\lambda, \mathbf{0}) \left(\frac{\nabla}{m}\right)^{k'} \int \frac{d\lambda'}{4\pi} \phi^{m'}(\lambda', \mathbf{0}) \right). \quad (20)$$

In this equation, the second line only encodes what in NRQCD would be called soft physics (scales smaller than  $m$ ); however, the first line receives contributions from both hard and soft physics. For example, there will be a soft physics contribution in the photon wave function whenever a soft gluon is emitted before crossing the target. Therefore, the analogy with NRQCD is not complete. This is illustrated with an example in Fig. 2. Note also that the dipole picture is formulated in light-cone gauge and therefore we cannot, in principle, use gauge invariance arguments that are common in NRQCD and that will impose relations between the different terms in the expansion. For example, the fact that derivatives acting on the low energy matrix elements have to be combined with gauge fields to form covariant derivatives connects states with a different number of particles in such a way that we would expect that

$C_{q\bar{q} \leftarrow q\bar{q}}^1$  is constrained by  $C_{q\bar{q} \leftarrow q\bar{q}g}^0$ ; however, since we are using a setting that is not gauge invariant, we are not going to use this kind of relations (for a more complete discussion, see Ref. [25], and also the discussion about genuine and kinematical twist in Ref. [43]).

Let us now discuss the power counting of this computation and which terms we need to consider if we want to achieve a NLO result. In this problem, radiative corrections in the hard part will be suppressed by powers of  $\alpha_s(\mu)|_{\mu \geq m}$ ; each additional  $\frac{\nabla}{m}$  acting on  $\phi$  would amount for a suppression of order  $v \sim \alpha_s(mv)$ . From now on, we will ignore, for purposes of order estimation, the scale at which  $\alpha_s$  is evaluated. With this in mind, we should in principle take into account the first radiative correction in the hard part and the first velocity correction in the soft part. However, the first



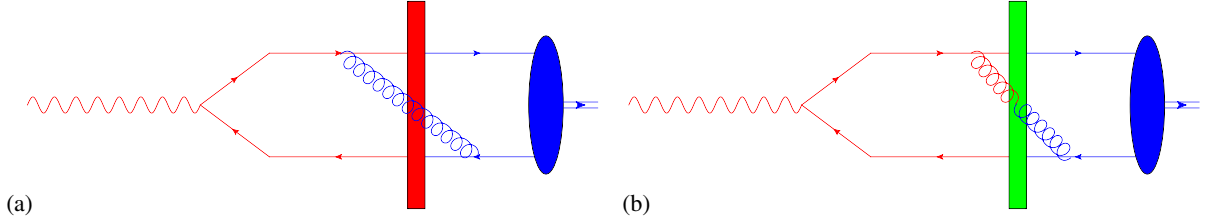


FIG. 2. Comparison between how the degrees of freedom are separated in NRQCD and in the dipole model for the particular case in which the heavy quark pair emits a soft gluon before crossing the target. (a) In NRQCD, degrees of freedom are separated according to their virtuality. In this picture, red particles have a virtuality larger than  $m^2 v^2$  (we are assuming, like in the rest of the text, that  $Q_s \gg mv$ ), and their influence would be encoded in the hard coefficient. The rest of the particles are represented in blue and will influence the NRQCD matrix elements. (b) In the dipole model, degrees of freedom are separated according to time. Particles before crossing the target belong to the wave function of the photon, and we represent them here in red, while particles after the target are encoded in the wave function of quarkonium and are colored blue. The method that we are implementing in this manuscript combines the two schemes by separating relativistic from nonrelativistic degrees of freedom in the wave function of quarkonium.

velocity correction only enters at NNLO. This is because, due to rotational invariance, the contribution from  $k = 1$  and  $k' = 0$  (or vice versa) in Eq. (20) is zero. At LO, the only contributing Fock state is  $n = m = q\bar{q}$  (and correspondingly in the complex conjugate amplitude denoted by primes). At NLO,  $n$  and  $m$  can also have the value  $q\bar{q}g$ . However, we can also check that the case  $m$  (or  $m'$ ) equal to  $q\bar{q}g$  is further suppressed. The reason is that the soft gluon has to be emitted either from the photon wave function (before the target) or by the relativistic part of the quarkonium wave function. In both cases, it would correspond to the emission of a soft gluon by a particle with a virtuality of order  $m^2$  or higher, and this process is always suppressed by powers of  $v$ . In summary, to obtain a NLO result, we only need to consider the following formula:

$$\begin{aligned} & \frac{d\sigma_{T,L}^{\gamma^*+N \rightarrow HQ+N}}{dt} \\ &= \frac{\left| \int \frac{d\lambda}{4\pi} \phi^{q\bar{q}} \right|^2}{16\pi} \left| \int d^2 r_\perp \int_0^1 \frac{dz}{4\pi} \left( (C_{q\bar{q} \leftarrow q\bar{q}}^0)^* \Psi_{\gamma^*}^{q\bar{q}} \sigma_{q\bar{q}} \right. \right. \\ & \quad \left. \left. + (C_{q\bar{q}g \leftarrow q\bar{q}}^0)^* \Psi_{\gamma^*}^{q\bar{q}g} \sigma_{q\bar{q}g} \right) \right|^2. \end{aligned} \quad (21)$$

Here, we have neglected gradient corrections [higher values of  $k, k'$  in Eq. (19)], since in the strict weak coupling power counting, valid for  $mv \gg \Lambda_{\text{QCD}}$ , the quark velocity is  $v \sim \alpha_s(mv)$ , and thus  $v^2 \ll \alpha_s(m)$ . It is worth keeping in mind that for practical applications in the case of charmonium it might happen that numerically  $v^2$  can be comparable to  $\alpha_s(m)$ , making the gradient corrections important. Nevertheless, it is always true that the NLO radiative corrections are bigger or of the order of the first corrections due to the velocity expansion and, therefore, a requisite of any improvement over the LO result.

The power counting discussed here is, to our knowledge, not clearly expressed in the literature, where typically only the LO limit is considered. Thus, Eq. (21) is the first main result of this paper. To make this statement quantitative,

we will next proceed to calculate at NLO the coefficient functions  $C_{q\bar{q} \leftarrow q\bar{q}}^0$  and  $C_{q\bar{q}g \leftarrow q\bar{q}}^0$ . We will then show that the cross section formula (21) gives finite results for any  $\sigma_{q\bar{q}}$  and  $\sigma_{q\bar{q}g}$  that fulfill B-JIMWLK evolution. However, it is also interesting to discuss the relation with collinear factorization [28,44] that can be used when  $Q$  is larger than any other scale in the problem. In that formalism, the cross section can be understood as the convolution of a hard function with the light-cone distribution amplitude (LCDA), which in the light-cone gauge corresponds to the light-cone wave function in the limit  $\mathbf{r}_\perp \rightarrow \mathbf{0}$ . The LCDA must fulfill the ERBL evolution [27,28]. In Refs. [29–31], the LCDA and ERBL evolution were studied within the formalism of NRQCD. We are going to check that LCDA that we can obtain from our light-cone wave function fulfills ERBL evolution.

### III. WAVE FUNCTION OF HEAVY QUARKONIUM

The two body part of the wave function of quarkonium can be determined using the Bethe-Salpeter equation. In the nonrelativistic limit, the relation between the light-cone wave function and the wave function that can be obtained in a potential model was studied in Ref. [45]. Here, we use this result as a starting point. Following Ref. [21], we use the convection that the light-cone wave function is normalized such that

$$\sum_{hh} \int d^2 r_\perp \int_0^1 \frac{dz}{4\pi} |\phi_{h\bar{h}}(z, r_\perp)|^2 = 1, \quad (22)$$

where in this formula we have written explicitly the sum over polarizations. We are going now to analyze in more detail the LO light-cone wave function of a vector meson. Following Ref. [45], we get in the spinor matrix space (instead of helicity space) wave function

$$\phi_{ab}^\mu(z, r_\perp) = \lambda \tilde{\phi}(z, r_\perp) \left( \frac{1 + \not{r}}{2} \gamma^\mu \frac{1 - \not{r}}{2} \right)_{ab}, \quad (23)$$

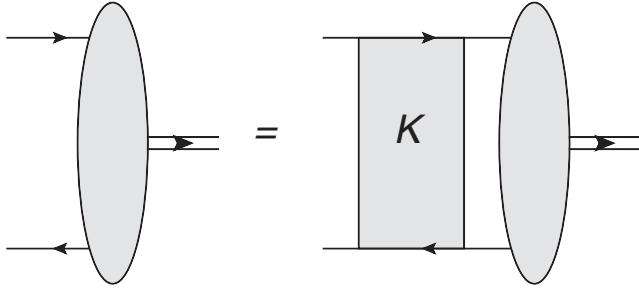


FIG. 3. Bethe-Salpeter equation that gives the nonrelativistic wave function. In this picture, all particles are nonrelativistic; therefore, the kernel  $K$  is just the Green's function of the scattering of two nonrelativistic heavy quarks.

where  $\tilde{\phi}$  is a function normalized as it is usually done in the context of potential models

$$\int d^3x |\tilde{\phi}(x)|^2 = 1, \quad (24)$$

and  $\lambda$  is a constant that we are going to fix such that Eq. (22) follows from Eq. (24). We can transform the last expression to light-cone helicity space using the prescription in Ref. [28], obtaining

$$\phi_{h\bar{h}}^\mu(z, r_\perp) = -\frac{\lambda \tilde{\phi}(z, r_\perp)}{8m^2} \bar{u}(mv, h) \gamma^\mu v(mv, \bar{h}). \quad (25)$$

The normalization condition then imposes that  $\lambda = \sqrt{32m^3}$ , so we finally obtain for the longitudinal component

$$\phi_{h\bar{h}}^3(z, r_\perp) = -\sqrt{2m} \tilde{\phi}(z, r_\perp) \delta_{h, -\bar{h}}, \quad (26)$$

while for the transverse component, we get

$$\phi_{h\bar{h}}^i(z, r_\perp) = \sqrt{2m} \tilde{\phi}(z, r_\perp) \delta_{h\bar{h}} (\delta_{i1} (-1)^{\frac{1-h}{2}} - i\delta_{i2}). \quad (27)$$

The previous functions fulfill the Bethe-Salpeter equation represented in Fig. 3 which can equivalently be written as a Schrödinger equation [45].

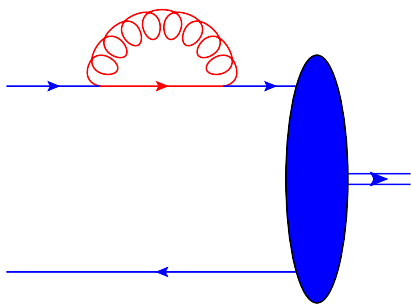


FIG. 4. Example of a contribution that can be encoded in the wave function renormalization of a nonrelativistic quark. We use the same color code as in part a of Fig. 2.

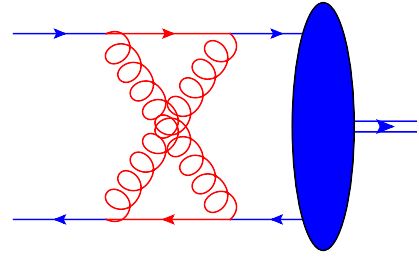


FIG. 5. Example of a contribution that can be encoded as a correction to the kernel.

Now, we want to go beyond the nonrelativistic approximations and consider the influence of relativistic quarks and gluons with an energy of the order of the heavy quark mass. We can differentiate three cases:

- (1) Components of the wave function that correspond to the probability amplitude of having a relativistic particle inside the quarkonium state.
- (2) Contributions (from relativistic particles in loops) resulting in a wave function renormalization of a nonrelativistic particle of which the probability amplitude to be in a quarkonium state is considered. An example of such a contribution is shown in Fig. 4.
- (3) Contributions that can be encoded as a correction to the kernel  $K$  in Fig. 3. An example is shown in Fig. 5.

We will not discuss contributions of type 3. Their effect can be encoded in a redefinition of the potential (or equivalently, the kernel in the Bethe-Salpeter equation). Hence, in the case of production and decay processes, this information is hidden in the value of the nonrelativistic wave function at the origin. Contributions of type 2 are important, but they just renormalize multiplicatively the nonrelativistic wave function by a constant equal to the wave function renormalization.<sup>3</sup> At leading order, they correspond to the diagram in Fig. 4, which we compute in Appendix A, giving

$$Z = 1 + \delta Z + \mathcal{O}(\alpha_s^2), \quad (28)$$

$$\begin{aligned} \delta Z = & -\frac{\alpha_s C_F}{2\pi} \left[ \frac{1}{D-4} (4 \log x_0 + 3) \right. \\ & + 2 \log x_0 \left( \log \left( \frac{m^2}{4\pi\mu^2} \right) + 1 + \log x_0 \right) \\ & \left. + (4 \log x_0 + 3) \frac{\gamma_E}{2} + \frac{3}{2} \log \left( \frac{m^2}{4\pi\mu^2} \right) - 2 \right]. \quad (29) \end{aligned}$$

In this last expression, we have regulated transverse momentum in dimensional regularization such that the dimensions of the transverse space is  $D-2$ . The  $+$ -component of the momentum has been regulated using

<sup>3</sup>Exterior heavy quark lines in the Bethe-Salpeter equation are multiplied by  $\sqrt{Z}$ . Since there are two of them, the overall factor is  $Z$ .

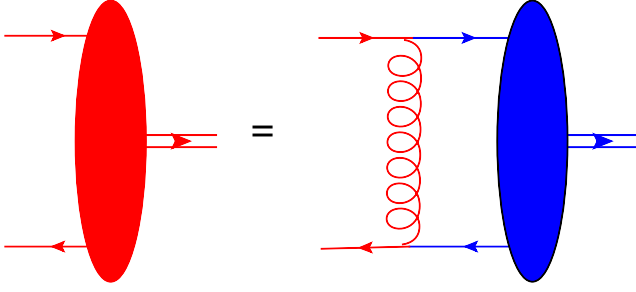


FIG. 6. LO contribution to the component of the wave function with two relativistic heavy quarks.

an infrared cutoff  $x_0$  in the momentum fraction of the gluon (with respect to the initial quark). This is a similar regularization scheme as used in the NLO light cone perturbation theory calculations in Refs. [15–17]. The wave function renormalization that we obtained is similar to the one presented in Ref. [46] but not exactly equal. However, our results agree on the double-logarithm contribution.

Contributions of type 1 can be computed by considering diagrams in which all relativistic particles annihilate to form nonrelativistic ones. They will be proportional to the nonrelativistic wave function at the origin. The reason for

this simple structure is that in diagrams in which only relativistic particles are involved the only energy scale that appears is  $m$ . Since no momenta are parametrically of order  $mv$  or  $mv^2$ , there are no diagrams enhanced by inverse powers of the velocity  $v$ , which would require a resummation. Furthermore, since all relativistic processes are short distance processes from the point of view of the nonrelativistic wave function, it is a good approximation (up to additional powers of  $v$ ) to consider that the nonrelativistic particles are created at the same point. In summary, contributions of types 1 and 2 will be encoded in the functions  $C_{n \leftarrow m}^k$  that were introduced in the previous sections. The difference is that, while contributions of type 2 give rise to corrections that are just constants, contributions of type 1 will have a nontrivial dependence on  $r_\perp$  and  $z$ . On the other hand, contributions of type 3 will be encoded in the nonrelativistic wave function.

For the computation at hand, we are interested in the components of the light-cone wave function in which we have two relativistic quarks or a relativistic quark, a nonrelativistic one, and a hard gluon. Let us focus first on the former case. Its LO contribution is represented by the diagram in Fig. 6. Details of the computation will be given in Appendix B; the result from this contribution gives

$$\begin{aligned} \{\Psi_{HQ}^{q\bar{q}}\}_{\lambda_1\lambda_2}^i(z, p_\perp) \Big|_{\text{Fig.6}} &= \frac{4g^2 C_F \sqrt{z(1-z)}}{p_\perp^2 + 4m^2(z - \frac{1}{2})^2} \left( \frac{d_{\mu\nu}(\hat{p}) (\theta(z - \frac{1}{2})(1-z) + \theta(\frac{1}{2} - z)z)}{p_\perp^2 + 4m^2(z - \frac{1}{2})^2} + \frac{\bar{n}_\mu \bar{n}_\nu}{4m^2(z - \frac{1}{2})^2} \right) \\ &\times \sum_{\lambda'_1, \lambda'_2} [\bar{u}(\hat{p}_Q, \lambda_1) \gamma^\mu u(mv, \lambda'_1)] \int \frac{d\lambda}{4\pi} \phi_{q\bar{q}}^i(\lambda, \mathbf{0}) [\bar{v}(mv, \lambda'_2) \gamma^\nu v(\hat{p}_{\bar{Q}}, \lambda_2)], \end{aligned} \quad (30)$$

where  $p$  is the momentum exchanged by the gluon and the light cone-gauge gluon polarization sum is

$$d_{\mu\nu}(q) = g_{\mu\nu} - \frac{\bar{n}_\mu q_\nu + q_\mu \bar{n}_\nu}{\bar{n} \cdot q} = - \sum_{\lambda_G} \epsilon^\mu(q, \lambda_G) \epsilon^\nu(q, \lambda_G). \quad (31)$$

Note also that the function  $\phi_{q\bar{q}}^i(\lambda, \mathbf{0})$  has to be understood as  $\phi_{q\bar{q}}^i(\lambda, \mathbf{r}_\perp = \mathbf{0})$ . For future manipulations, it might be useful to write this result in coordinate space. To do this, we make use of the formulas in Appendix C to rewrite

$$\bar{u}(\hat{p}_Q, \lambda_1) \not{\epsilon}_\perp u(mv, \lambda'_1) = \frac{p_\perp^i \epsilon_\perp^j}{2\sqrt{2}mz(z - \frac{1}{2})} \bar{u}(\hat{p}_Q, \lambda_1) \not{\epsilon} \left[ \left( z + \frac{1}{2} \right) \delta^{ij} + \frac{z - \frac{1}{2}}{2} [\gamma_\perp^i, \gamma_\perp^j] \right] u(mv, \lambda'_1) + \frac{z - \frac{1}{2}}{\sqrt{2}z} \bar{u}(\hat{p}_Q, \lambda_1) \not{\epsilon}_\perp \not{\epsilon} u(mv, \lambda'_1), \quad (32)$$

and

$$\begin{aligned} \bar{v}(mv, \lambda'_2) \not{\epsilon}_\perp v(\hat{p}_{\bar{Q}}, \lambda_2) &= \frac{p_\perp^i \epsilon_\perp^j}{2\sqrt{2}m(1-z)(z - \frac{1}{2})} \bar{v}(mv, \lambda'_2) \not{\epsilon} \left[ \left( \frac{3}{2} - z \right) \delta^{ij} + \frac{z - \frac{1}{2}}{2} [\gamma_\perp^i, \gamma_\perp^j] \right] v(\hat{p}_{\bar{Q}}, \lambda_2) \\ &- \frac{z - \frac{1}{2}}{\sqrt{2}(1-z)} \bar{v}(mv, \lambda'_2) \not{\epsilon}_\perp \not{\epsilon} v(\hat{p}_{\bar{Q}}, \lambda_2). \end{aligned} \quad (33)$$

Using the formulas of Appendix D and the expressions for the spinor matrix elements in Appendix E, it is possible to find the result in coordinate space,



$$\begin{aligned}
\{\Psi_{HQ}^{q\bar{q}}\}_{\lambda_1\lambda_2}^i(z, r_\perp)\Big|_{\text{Fig.6}} &= \frac{2g^2 C_F z(1-z)}{\pi(z-\frac{1}{2})^2} \left[ K_0(\tau) - \frac{(z+\frac{1}{2})(\frac{3}{2}-z)}{2z(1-z)} \left( \theta\left(z-\frac{1}{2}\right)(1-z) + \theta\left(\frac{1}{2}-z\right)z \right) \left( K_0(\tau) - \frac{\tau}{2} K_1(\tau) \right) \right] \\
&\times \int \frac{d\lambda}{4\pi} \{\phi_{q\bar{q}}^i(\lambda, \mathbf{0})\}_{\lambda_1, \lambda_2} - \frac{g^2 C_F}{\pi} \left( \theta\left(z-\frac{1}{2}\right)(1-z) + \theta\left(\frac{1}{2}-z\right)z \right) K_0(\tau) (-1)^{\frac{2-\lambda_1-\lambda_2}{2}} \\
&\times \left\{ \int \frac{d\lambda}{4\pi} \phi_{q\bar{q}}^i(\lambda, \mathbf{0}) \right\}_{\lambda_1, \lambda_2} + \frac{g^2 C_F (z-\frac{1}{2}) m r_\perp}{\pi} \left( \theta\left(z-\frac{1}{2}\right)(1-z) + \theta\left(\frac{1}{2}-z\right)z \right) K_1(\tau) \\
&\times (-1)^{\frac{2-\lambda_1-\lambda_2}{2}} \left\{ \int \frac{d\lambda}{4\pi} \phi_{q\bar{q}}^i(\lambda, \mathbf{0}) \right\}_{\lambda_1, \lambda_2} - \frac{ig^2 C_F}{2(z-\frac{1}{2})\pi} \left( \theta\left(z-\frac{1}{2}\right)(1-z) + \theta\left(\frac{1}{2}-z\right)z \right) \tau K_0(\tau) \\
&\times \left( \left( z + \frac{1}{2} \right) - (-1)^{\frac{2-\lambda_1-\lambda_2}{2}} \left( z - \frac{1}{2} \right) \right) \times \left\{ \int \frac{d\lambda}{4\pi} \phi_{q\bar{q}}^i(\lambda, \mathbf{0}) \right\}_{\lambda_1, -\lambda_2} \frac{r_\perp^j}{r_\perp} \left( (-1)^{\frac{1-\lambda_2}{2}} \delta^{j1} - i\delta^{j2} \right) \\
&+ \frac{ig^2 C_F}{2(z-\frac{1}{2})\pi} \left( \theta\left(z-\frac{1}{2}\right)(1-z) + \theta\left(\frac{1}{2}-z\right)z \right) \tau K_0(\tau) \left( \left( \frac{3}{2}-z \right) + (-1)^{\frac{2-\lambda_1-\lambda_2}{2}} \left( z - \frac{1}{2} \right) \right) \\
&\times \left\{ \int \frac{d\lambda}{4\pi} \phi_{q\bar{q}}^i(\lambda, \mathbf{0}) \right\}_{-\lambda_1, \lambda_2} \frac{r_\perp^j}{r_\perp} \left( (-1)^{\frac{1-\lambda_1}{2}} \delta^{j1} - i\delta^{j2} \right) + \frac{g^2 C_F (z-\frac{1}{2}) m r_\perp}{\pi} \\
&\times \left( \theta\left(z-\frac{1}{2}\right)(1-z) + \theta\left(\frac{1}{2}-z\right)z \right) K_1(\tau) \times \left( (-1)^{\frac{2-\lambda_1-\lambda_2}{2}} - 1 \right) \left\{ \int \frac{d\lambda}{4\pi} \phi_{q\bar{q}}^i(\lambda, \mathbf{0}) \right\}_{-\lambda_1, -\lambda_2}, \quad (34)
\end{aligned}$$

where  $\tau = 2m(z - \frac{1}{2})r_\perp$ .

The general expression (34) can be further simplified if we distinguish the cases of longitudinal and transverse polarization. For the longitudinal polarization state, we obtain

$$\begin{aligned}
\{\Psi_{HQ}^{q\bar{q}}\}_{\lambda_1\lambda_2}^3(z, r_\perp)\Big|_{\text{Fig.6}} &= -\frac{2\sqrt{2m}g^2 C_F z(1-z)\delta_{\lambda_1, -\lambda_2}}{\pi(z-\frac{1}{2})} \left\{ K_0(\tau) + \left( \theta\left(z-\frac{1}{2}\right)(1-z) + \theta\left(\frac{1}{2}-z\right)z \right) \right. \\
&\times \left. \left[ \frac{(z-\frac{1}{2})^2 - \frac{1}{2}}{z(1-z)} \left( K_0(\tau) - \frac{\tau}{2} K_1(\tau) \right) - \frac{(z-\frac{1}{2})^2}{2z(1-z)} \tau K_1(\tau) \right] \right\} \int \frac{d\lambda}{4\pi} \tilde{\phi}_{q\bar{q}}(\lambda, \mathbf{0}). \quad (35)
\end{aligned}$$

The one-loop wave function for the transverse polarization state is

$$\begin{aligned}
\{\Psi_{HQ}^{q\bar{q}}\}_{\lambda_1\lambda_2}^i(z, r_\perp)\Big|_{\text{Fig.6}} &= \frac{2g^2 C_F z(1-z)}{\pi(z-\frac{1}{2})^2} \left[ K_0(\tau) - \frac{(\theta(z-\frac{1}{2})(1-z) + \theta(\frac{1}{2}-z)z)}{2z(1-z)} \left( K_0(\tau) - \frac{\tau}{2} K_1(\tau) \right) \right] \\
&\times \sqrt{2m} \delta_{\lambda_1, \lambda_2} (\delta_{i1} (-1)^{\frac{1-\lambda_1}{2}} - i\delta_{i2}) \int \frac{d\lambda}{4\pi} \tilde{\phi}_{q\bar{q}}(\lambda, \mathbf{0}) \\
&+ \frac{i2g^2 C_F \tau K_0(\tau)}{\pi} \left( \theta\left(z-\frac{1}{2}\right)(1-z) + \theta\left(\frac{1}{2}-z\right)z \right) \\
&\times \delta_{\lambda_1, -\lambda_2} \frac{r^j}{r} \left( \delta^{ij} + \frac{i(-1)^{\frac{1-\lambda_1}{2}} \epsilon^{ij}}{2(z-\frac{1}{2})} \right) \sqrt{2m} \int \frac{d\lambda}{4\pi} \tilde{\phi}_{q\bar{q}}(\lambda, \mathbf{0}) \quad (36)
\end{aligned}$$

Combining the results of Eqs. (29) and (30), we obtain that

$$\begin{aligned}
C_{q\bar{q} \leftarrow q\bar{q}}^0(z, \mathbf{p}_\perp; \lambda_1, \lambda_2; \lambda'_1, \lambda'_2) &= 4\pi \delta\left(z - \frac{1}{2}\right) (1 + \delta Z) \delta_{\lambda_1 \lambda'_1} \delta_{\lambda_2 \lambda'_2} \\
&+ \frac{4g^2 C_F \sqrt{z(1-z)}}{p_\perp^2 + 4m^2(z-\frac{1}{2})^2} \left( \frac{d_{\mu\nu}(\hat{p})(\theta(z-\frac{1}{2})(1-z) + \theta(\frac{1}{2}-z)z)}{p_\perp^2 + 4m^2(z-\frac{1}{2})^2} + \frac{\bar{n}_\mu \bar{n}_\nu}{4m^2(z-\frac{1}{2})^2} \right) \\
&\times \sum_{\lambda'_1, \lambda'_2} [\bar{u}(\hat{p}_Q, \lambda_1) \gamma^\mu u(mv, \lambda'_1)] [\bar{v}(mv, \lambda'_2) \gamma^\nu v(\hat{p}_Q, \lambda_2)] + \mathcal{O}(\alpha_s^2). \quad (37)
\end{aligned}$$

This is the first major result of this section. An explicit expression for the structures in (37) in coordinate space and for the meson polarization states can be easily obtained using (35) and (36). The result (37) represents one of the two NLO corrections to the heavy quarkonium wave function, needed for the NLO calculation of exclusive quarkonium production.

In the nonrelativistic limit, the polarization of the meson is reflected only in the spin state of the quarks, and the spatial part of the wave function becomes rotationally symmetric. We can utilize this simplification and integrate the wave function over the polar angle, which results in simpler expressions. The general azimuthally symmetric part of the wave function is

$$\begin{aligned}
& \int d\theta_r \{ \Psi_{HQ}^{q\bar{q}} \}_{\lambda_1 \lambda_2}^i(z, r_\perp) \Big|_{\text{Fig.6}} \\
&= \frac{g^2 C_F \sqrt{z(1-z)}}{m^2 (z - \frac{1}{2})^2} \left[ K_0(\tau) - \frac{\left(z + \frac{1}{2}\right) \left(\frac{3}{2} - z\right)}{2z(1-z)} \left( \theta \left(z - \frac{1}{2}\right) (1-z) + \theta \left(\frac{1}{2} - z\right) z \right) \left( K_0(\tau) - \frac{\tau}{2} K_1(\tau) \right) \right] \\
&\quad \times \sum_{\lambda'_1, \lambda'_2} [\bar{u}(\hat{p}_Q, \lambda_1) \not{p} u(mv, \lambda'_1)] \int \frac{d\lambda}{4\pi} \phi_{q\bar{q}}^i(\lambda, \mathbf{0}) [\bar{v}(mv, \lambda'_2) \not{p} v(\hat{p}_{\bar{Q}}, \lambda_2)] \\
&\quad + \frac{g^2 C_F}{16m^2 \sqrt{z(1-z)}} \left( \theta \left(z - \frac{1}{2}\right) (1-z) + \theta \left(\frac{1}{2} - z\right) z \right) \left( K_0(\tau) - \frac{\tau}{2} K_1(\tau) \right) \\
&\quad \times \sum_{\lambda'_1, \lambda'_2} [\bar{u}(\hat{p}_Q, \lambda_1) \not{p} [\gamma_\perp^i, \gamma_\perp^j] u(mv, \lambda'_1)] \int \frac{d\lambda}{4\pi} \phi_{q\bar{q}}^i(\lambda, \mathbf{0}) [\bar{v}(mv, \lambda'_2) [\gamma_\perp^j, \gamma_\perp^i] \not{p} v(\hat{p}_{\bar{Q}}, \lambda_2)] \\
&\quad + \frac{g^2 C_F (z - \frac{1}{2}) r_\perp}{2m \sqrt{z(1-z)}} \left( \theta \left(z - \frac{1}{2}\right) (1-z) + \theta \left(\frac{1}{2} - z\right) z \right) K_1(\tau) \\
&\quad \times \sum_{\lambda'_1, \lambda'_2} [\bar{u}(\hat{p}_Q, \lambda_1) \gamma_\perp^i \not{p} u(mv, \lambda'_1)] \int \frac{d\lambda}{4\pi} \phi_{q\bar{q}}^i(\lambda, \mathbf{0}) [\bar{v}(mv, \lambda'_2) \gamma_\perp^i \not{p} v(\hat{p}_{\bar{Q}}, \lambda_2)]. \tag{38}
\end{aligned}$$

Decomposing this into meson polarization states, we get for the longitudinal polarization

$$\begin{aligned}
& \int d\theta_r \{ \Psi_{HQ}^{q\bar{q}} \}_{\lambda_1 \lambda_2}^3(z, r_\perp) \Big|_{\text{Fig.6}} = \frac{4g^2 C_F z(1-z)}{(z - \frac{1}{2})^2} \left\{ K_0(\tau) + \left( \theta \left(z - \frac{1}{2}\right) (1-z) + \theta \left(\frac{1}{2} - z\right) z \right) \right. \\
&\quad \times \left. \left[ \frac{(z - \frac{1}{2})^2 - \frac{1}{2}}{z(1-z)} \left( K_0(\tau) - \frac{\tau}{2} K_1(\tau) \right) - \frac{(z - \frac{1}{2})^2}{2z(1-z)} \tau K_1(\tau) \right] \right\} \left\{ \int \frac{d\lambda}{4\pi} \phi_{q\bar{q}}^3(\lambda, \mathbf{0}) \right\}_{\lambda_1, \lambda_2}, \tag{39}
\end{aligned}$$

while for the transverse case, we obtain

$$\begin{aligned}
& \int d\theta_r \{ \Psi_{HQ}^{q\bar{q}} \}_{\lambda_1 \lambda_2}^i(z, r_\perp) \Big|_{\text{Fig.6}} = \frac{4g^2 C_F z(1-z)}{(z - \frac{1}{2})^2} \left\{ K_0(\tau) - \frac{(\theta(z - \frac{1}{2})(1-z) + \theta(\frac{1}{2} - z)z)}{2z(1-z)} \left( K_0(\tau) - \frac{\tau}{2} K_1(\tau) \right) \right\} \\
&\quad \times \left\{ \int \frac{d\lambda}{4\pi} \phi_{q\bar{q}}^i(\lambda, \mathbf{0}) \right\}_{\lambda_1, \lambda_2}. \tag{40}
\end{aligned}$$

It is also possible to write a compact expression in coordinate space for the polar angle average of the coefficients  $C_{q\bar{q} \leftarrow q\bar{q}}^0(z, \mathbf{p}_\perp; \lambda_1, \lambda_2; \lambda'_1, \lambda'_2)$ . For the case of longitudinal polarization, the result is

$$\begin{aligned}
& \int d\theta_r C_{q\bar{q} \leftarrow q\bar{q}}^0(z, \mathbf{r}_\perp; \lambda_1, \lambda_2; \lambda'_1, \lambda'_2)_{\text{long}} = 8\pi^2 \delta \left( z - \frac{1}{2} \right) (1 + \delta Z) \delta_{\lambda_1 \lambda'_1} \delta_{\lambda_2 \lambda'_2} \\
&\quad + \frac{4g^2 C_F z(1-z)}{(z - \frac{1}{2})^2} \delta_{\lambda_1 \lambda'_1} \delta_{\lambda_2 \lambda'_2} \left\{ K_0(\tau) + \left( \theta \left(z - \frac{1}{2}\right) (1-z) + \theta \left(\frac{1}{2} - z\right) z \right) \right. \\
&\quad \times \left. \left[ \frac{(z - \frac{1}{2})^2 - \frac{1}{2}}{z(1-z)} \left( K_0(\tau) - \frac{\tau}{2} K_1(\tau) \right) - \frac{(z - \frac{1}{2})^2}{2z(1-z)} \tau K_1(\tau) \right] \right\}, \tag{41}
\end{aligned}$$

and for the transverse polarization,

$$\int d\theta_r C_{q\bar{q}\leftarrow q\bar{q}}^0(z, \mathbf{r}_\perp; \lambda_1, \lambda_2; \lambda'_1, \lambda'_2)_{\text{trans}} = 8\pi^2 \delta\left(z - \frac{1}{2}\right) (1 + \delta Z) \delta_{\lambda_1 \lambda'_1} \delta_{\lambda_2 \lambda'_2} + \frac{4g^2 C_{FZ}(1-z) \delta_{\lambda_1 \lambda'_1} \delta_{\lambda_2 \lambda'_2}}{(z - \frac{1}{2})^2} \times \left[ K_0(\tau) - \frac{(\theta(z - \frac{1}{2})(1-z) + \theta(\frac{1}{2} - z)z)}{2z(1-z)} \left( K_0(\tau) - \frac{\tau}{2} K_1(\tau) \right) \right]. \quad (42)$$

Now, let us move to the second contribution, where we have a relativistic quark, a nonrelativistic one, and a hard gluon. This is represented at leading order in the diagram of Fig. 7. We need to introduce some notation in order to write the result. The longitudinal momentum fractions of the relativistic quark, the gluon, and the nonrelativistic antiquark are respectively  $z_{RQ} = \frac{1-x}{2} + \lambda$ ,  $z_G = \frac{x}{2}$ , and  $z_{\bar{Q}} = \frac{1}{2} - \lambda$ . From the nonrelativistic nature of the ‘‘spectator’’ antiquark, it follows that  $\lambda \ll 1$ . We shall consequently not write out the integration limits for  $\lambda$ , since it is understood to be dominated by a short interval around the origin. The transverse momenta are respectively  $\mathbf{P}_{\perp, RQ} = \frac{\mathbf{p}_\perp}{2} - \mathbf{q}_\perp$ ,  $\mathbf{P}_{\perp, G} = \frac{\mathbf{p}_\perp}{2} + \mathbf{q}_\perp$ , and  $\mathbf{P}_{\perp, \bar{Q}} = -\mathbf{p}_\perp$ , where again for the nonrelativistic antiquark  $\mathbf{p}_\perp \ll m$ . Using this, we get

$$\int \frac{d\lambda d^{D-2} p_\perp}{4\pi (2\pi)^{D-2}} \{\Psi_{HQ}^{q\bar{q}g}\}^i_{\lambda_{RQ}, \lambda_G, \lambda_{\bar{Q}}} (x, \mathbf{q}_\perp; \lambda, \mathbf{p}_\perp) = -g \frac{\sqrt{x(1-x)}}{\sqrt{2}(q_\perp^2 + m^2 x^2)} \sum_{\lambda_Q} \bar{u}(\hat{p}_{RQ}, \lambda_{RQ}) \not{\epsilon}^*(\hat{p}_G, \lambda_G) u(mv, \lambda_Q) \int \frac{d\lambda}{4\pi} \phi_{q\bar{q}}^i(\lambda, \mathbf{0}), \quad (43)$$

or equivalently

$$\begin{aligned} & \int \frac{d\lambda d^{D-2} p_\perp}{4\pi (2\pi)^{D-2}} \{\Psi_{HQ}^{q\bar{q}g}\}^i_{\lambda_{RQ}, \lambda_G, \lambda_{\bar{Q}}} (x, \mathbf{q}_\perp; \lambda, \mathbf{p}_\perp) \\ &= -\frac{g(1-\frac{x}{2}) q_\perp^i \epsilon_\perp^{*A,j}(\lambda_G)}{\sqrt{x(1-x)} m (q_\perp^2 + m^2 x^2)} \sum_{\lambda_Q} \bar{u}(\hat{p}_{RQ}, \lambda_{RQ}) T^A \left[ \delta^{ij} - \frac{x}{4(1-\frac{x}{2})} [\gamma_\perp^i, \gamma_\perp^j] \right] \not{u}(mv, \lambda_Q) \int \frac{d\lambda}{4\pi} \phi_{q\bar{q}}^i(\lambda, \mathbf{0}) \\ &+ \frac{g\sqrt{x(1-x)}}{2(1-x)} \frac{x}{q_\perp^2 + m^2 x^2} \sum_{\lambda_Q} \bar{u}(\hat{p}_{RQ}, \lambda_{RQ}) \not{\epsilon}_\perp^*(\lambda_G) \not{u}(mv, \lambda_Q) \int \frac{d\lambda}{4\pi} \phi_{q\bar{q}}^i(\lambda, \mathbf{0}). \end{aligned} \quad (44)$$

In order to write the result in coordinate space, we define  $\mathbf{r}_\perp$  as the Fourier conjugate of the nonrelativistic momentum  $\mathbf{p}_\perp$  and  $\mathbf{l}_\perp$  as the one of the relativistic one  $\mathbf{q}_\perp$ , leading to

$$\begin{aligned} & \int \frac{d\lambda}{4\pi} \{\Psi_{HQ}^{q\bar{q}g}\}^i_{\lambda_{RQ}, \lambda_G, \lambda_{\bar{Q}}} (x, \mathbf{l}_\perp; \lambda, \mathbf{r}_\perp = \mathbf{0}) \\ &= -\frac{ig(1-\frac{x}{2}) x l_\perp^i \epsilon_\perp^{*A,j}(\lambda_G)}{2\pi \sqrt{x(1-x)} l_\perp} \left( \frac{mx}{2\pi l_\perp \mu^2} \right)^{\frac{D-4}{2}} K_{\frac{D-2}{2}}(mx l_\perp) \sum_{\lambda_Q} \bar{u}(\hat{p}_{RQ}, \lambda_{RQ}) T^A \left[ \delta^{ij} - \frac{x}{4(1-\frac{x}{2})} [\gamma_\perp^i, \gamma_\perp^j] \right] \not{u}(mv, \lambda_Q) \\ &\times \int \frac{d\lambda}{4\pi} \phi_{q\bar{q}}^i(\lambda, \mathbf{0}) + \frac{g\sqrt{x(1-x)} x}{4\pi(1-x)} \left( \frac{mx}{2\pi l_\perp \mu^2} \right)^{\frac{D-4}{2}} K_{\frac{D-4}{2}}(mx l_\perp) \sum_{\lambda_Q} \bar{u}(\hat{p}_{RQ}, \lambda_{RQ}) \not{\epsilon}_\perp^*(\lambda_G) \not{u}(mv, \lambda_Q) \int \frac{d\lambda}{4\pi} \phi_{q\bar{q}}^i(\lambda, \mathbf{0}). \end{aligned} \quad (45)$$

It is straightforward to obtain  $C_{q\bar{q}\leftarrow q\bar{q}}^0$  from the previous results as

$$\begin{aligned} & C_{q\bar{q}\leftarrow q\bar{q}}^0(x, \mathbf{l}_\perp; \lambda, \mathbf{r}_\perp = \mathbf{0}; \lambda_1, \lambda_G, \lambda_2; \lambda'_1, \lambda'_2) \\ &= -\frac{ig(1-\frac{x}{2}) x l_\perp^i \epsilon_\perp^{*A,j}(\lambda_G)}{2\pi \sqrt{x(1-x)} l_\perp} \delta_{\lambda_2, \lambda'_2} \left( \frac{mx}{2\pi l_\perp \mu^2} \right)^{\frac{D-4}{2}} K_{\frac{D-2}{2}}(mx l_\perp) \sum_{\lambda_Q} \bar{u}(\hat{p}_{RQ}, \lambda_1) T^A \left[ \delta^{ij} - \frac{x}{4(1-\frac{x}{2})} [\gamma_\perp^i, \gamma_\perp^j] \right] \not{u}(mv, \lambda'_1) \\ &+ \frac{g\sqrt{x(1-x)} x}{4\pi(1-x)} \delta_{\lambda_2, \lambda'_2} \left( \frac{mx}{2\pi l_\perp \mu^2} \right)^{\frac{D-4}{2}} K_{\frac{D-4}{2}}(mx l_\perp) \sum_{\lambda_Q} \bar{u}(\hat{p}_{RQ}, \lambda_1) \not{\epsilon}_\perp^*(\lambda_G) \not{u}(mv, \lambda'_1). \end{aligned} \quad (46)$$

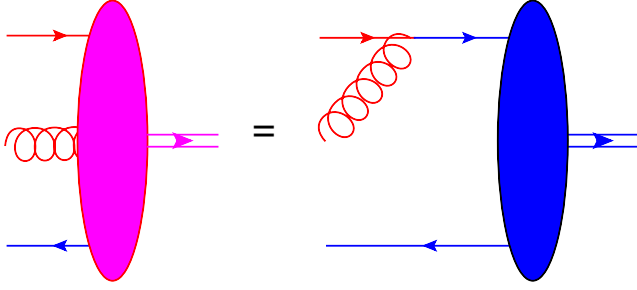


FIG. 7. LO contribution to the component of the wave function with one relativistic heavy quark, one nonrelativistic heavy antiquark, and a hard gluon.

A cross-check of the results of this section can be obtained by checking that the normalization of the light-cone wave function is not changed by radiative corrections. To order  $\alpha_s$ , this is ensured if the square of the diagram in Fig. 4 cancels with the square of the diagram in Fig. 7. An easy way to check this is to start from Eq. (43); after doing the square and performing the trace over gamma matrices, one immediately obtains an equation compatible with (3.28) in Ref. [46], which is equal to  $-\delta Z$ .

#### IV. LIGHT-CONE DISTRIBUTION AMPLITUDES

In the cases in which the virtuality of the photon is much larger than other dimensionful scales in the problem, in particular the mass of the heavy quark, one can use collinear factorization [28,44]. The information about the bound state in this formalism is encoded in the light-cone distribution amplitude (DA). This coincides with the light-cone wave function in the limit in which the transverse radius  $r_\perp$  goes to zero. This object was already studied in Refs. [29–31] using the nonrelativistic expansion (see also Ref. [47]); here, we provide an independent computation in light-cone gauge.

Naively, one would expect that one can obtain the light-cone distribution amplitude trivially making the limit  $r_\perp \rightarrow 0$  in the results in the previous section. This is not so because taking the limit introduces an ultraviolet divergence that needs to be regularized. This can be done in dimensional regularization using the following prescription:

$$\lim_{r_\perp \rightarrow 0} f(z, \mathbf{r}_\perp) = \int \frac{d^{D-2} p_\perp}{(2\pi)^{D-2}} f(z, \mathbf{p}_\perp). \quad (47)$$

Applying this method to Eq. (30), one obtains for the longitudinal polarization

$$\begin{aligned} & \left. \{\Psi_{HQ}^{q\bar{q}}\}_{\lambda_1 \lambda_2}^3(z, r_\perp = 0) \right|_{\text{Fig.6}} \\ &= -\frac{g^2 C_F \sqrt{z(1-z)}}{2\pi m^2 (z - \frac{1}{2})^2} \left[ \left( \frac{1}{D-4} + \frac{1}{2} \log \left( \frac{m^2 (z - \frac{1}{2})^2}{\pi \mu^2} \right) + \frac{\gamma_E}{2} \right) \left( 1 + \left( \theta \left( z - \frac{1}{2} \right) (1-z) + \theta \left( \frac{1}{2} - z \right) z \right) \frac{(D-2)(z - \frac{1}{2})^2 - 1}{2z(1-z)} \right) \right. \\ & \quad \left. + \frac{(\theta(z - \frac{1}{2})(1-z) + \theta(\frac{1}{2} - z)z)}{4z(1-z)} \left( 2(D-2) \left( z - \frac{1}{2} \right)^2 - 1 \right) \right] \sum_{\lambda'_1, \lambda'_2} [\bar{u}(\hat{p}_Q, \lambda_1) \not{u}(mv, \lambda'_1)] \int \frac{d\lambda}{4\pi} \phi_{q\bar{q}}^3(\lambda, \mathbf{0}) [\bar{v}(mv, \lambda'_2) \not{v}(\hat{p}_{\bar{Q}}, \lambda_2)] \end{aligned} \quad (48)$$

and for the transverse one

$$\begin{aligned} & \left. \{\Psi_{HQ}^{q\bar{q}}\}_{\lambda_1 \lambda_2}^i(z, r_\perp = 0) \right|_{\text{Fig.6}} = -\frac{g^2 C_F \sqrt{z(1-z)}}{2\pi m^2 (z - \frac{1}{2})^2} \left[ \left( \frac{1}{D-4} + \frac{1}{2} \log \left( \frac{m^2 (z - \frac{1}{2})^2}{\pi \mu^2} \right) + \frac{\gamma_E}{2} \right) \right. \\ & \quad \times \left( 1 - \frac{(\theta(z - \frac{1}{2})(1-z) + \theta(\frac{1}{2} - z)z)}{2z(1-z)} \right) - \frac{(\theta(z - \frac{1}{2})(1-z) + \theta(\frac{1}{2} - z)z)}{4z(1-z)} \left. \right] \\ & \quad \times \sum_{\lambda'_1, \lambda'_2} [\bar{u}(\hat{p}_Q, \lambda_1) \not{u}(mv, \lambda'_1)] \int \frac{d\lambda}{4\pi} \phi_{q\bar{q}}^i(\lambda, \mathbf{0}) [\bar{v}(mv, \lambda'_2) \not{v}(\hat{p}_{\bar{Q}}, \lambda_2)]. \end{aligned} \quad (49)$$

We now define the light-cone distribution amplitude as

$$D^i(z) = \{\Psi_{HQ}^{q\bar{q}}\}_{\lambda_1 \lambda_2}^i(z, r_\perp = 0). \quad (50)$$

Using the previous results, the light-cone distribution amplitude  $D(z)$  can be written as

$$D^i(z) = 4\pi(1 + \delta Z) \delta \left( z - \frac{1}{2} \right) \int \frac{d\lambda}{4\pi} \phi_{q\bar{q}}^i(\lambda, \mathbf{0}) + \left. \{\Psi_{HQ}^{q\bar{q}}\}_{\lambda_1 \lambda_2}^i(z, r_\perp = 0) \right|_{\text{Fig.6}}. \quad (51)$$

For the longitudinal polarization, this is

$$\begin{aligned}
D^3(z) &= 4\pi(1 + \delta Z)\delta\left(z - \frac{1}{2}\right) \int \frac{d\lambda}{4\pi} \phi_{q\bar{q}}^3(\lambda, \mathbf{0}) - \frac{2g^2 C_F z(1-z)}{\pi(z - \frac{1}{2})^2} \left[ \left( \frac{1}{D-4} + \frac{1}{2} \log\left(\frac{m^2(z - \frac{1}{2})^2}{\pi\mu^2}\right) + \frac{\gamma_E}{2} \right) \right. \\
&\times \left( 1 + \left( \theta\left(z - \frac{1}{2}\right)(1-z) + \theta\left(\frac{1}{2} - z\right)z \right) \frac{(D-2)(z - \frac{1}{2})^2 - 1}{2z(1-z)} \right) \\
&\left. + \frac{(\theta(z - \frac{1}{2})(1-z) + \theta(\frac{1}{2} - z)z)}{4z(1-z)} \left( 2(D-2) \left( z - \frac{1}{2} \right)^2 - 1 \right) \right] \int \frac{d\lambda}{4\pi} \phi_{q\bar{q}}^3(\lambda, \mathbf{0}), \tag{52}
\end{aligned}$$

while for the transverse one, the DA is

$$\begin{aligned}
D^i(z) &= 4\pi(1 + \delta Z)\delta\left(z - \frac{1}{2}\right) \int \frac{d\lambda}{4\pi} \phi_{q\bar{q}}^i(\lambda, \mathbf{0}) - \frac{2g^2 C_F z(1-z)}{\pi(z - \frac{1}{2})^2} \left[ \left( \frac{1}{D-4} + \frac{1}{2} \log\left(\frac{m^2(z - \frac{1}{2})^2}{\pi\mu^2}\right) + \frac{\gamma_E}{2} \right) \right. \\
&\times \left( 1 - \frac{(\theta(z - \frac{1}{2})(1-z) + \theta(\frac{1}{2} - z)z)}{2z(1-z)} \right) - \frac{(\theta(z - \frac{1}{2})(1-z) + \theta(\frac{1}{2} - z)z)}{4z(1-z)} \left. \right] \int \frac{d\lambda}{4\pi} \phi_{q\bar{q}}^i(\lambda, \mathbf{0}). \tag{53}
\end{aligned}$$

The first lines in Eqs. (52) and (53) are the leading-order bare amplitude (apart from the  $\delta Z$ ). The NLO corrections involve a divergence proportional to  $1/(D-4)$  from the transverse integrals and the associated logarithm of the regularization scale  $\mu$ . In the usual fashion, these divergences must be absorbed into the bare distribution, leaving the renormalized distribution dependent on the scale  $\mu$ . This dependence is related to the ERBL evolution equation [28,44]:

$$\frac{\partial D^i(z)}{\partial \log \mu^2} = \frac{\alpha_s C_F}{2\pi} \int_0^1 dz' K_{L,T}(z, z') D^i(z'). \tag{54}$$

To check that we recover this equation in the standard form, we can take the expressions for the kernels in Eq. (54) from the literature and compute the rhs. The comparison of this result with the coefficient of the logarithm of  $\mu$  in Eqs. (52) and (53) then provides a check of our calculation of the wave function.

The ERBL kernel for the longitudinal polarization is given by

$$\begin{aligned}
K_L(z, z') &= \theta(z - z') \frac{1-z}{1-z'} \left( 1 + \left[ \frac{1}{z-z'} \right]_+ \right) \\
&+ \theta(z' - z) \frac{z}{z'} \left( 1 + \left[ \frac{1}{z' - z} \right]_+ \right) + \frac{3}{2} \delta(z - z'), \tag{55}
\end{aligned}$$

while for transverse one, it is

$$\begin{aligned}
K_T(z, z') &= \theta(z - z') \frac{1-z}{1-z'} \left[ \frac{1}{z-z'} \right]_+ \\
&+ \theta(z' - z) \frac{z}{z'} \left[ \frac{1}{z' - z} \right]_+ + \frac{3}{2} \delta(z - z'). \tag{56}
\end{aligned}$$

The  $\square_+$  notation means that

$$\int dz f(z) \left[ \frac{1}{z-z_0} \right]_+ = \int dz \frac{f(z) - f(z_0)}{z-z_0}. \tag{57}$$

Note that the  $\square_+$  prescription can be implemented with a cutoff, as we did when computing  $\delta Z$ . For example,

$$\int dz \theta\left(z - \frac{1}{2}\right) f(z) \left[ \frac{1}{z - \frac{1}{2}} \right]_+ = \int_{\frac{1+x_0}{2}}^1 dz \frac{f(z)}{z - \frac{1}{2}} + f\left(\frac{1}{2}\right) \log x_0. \tag{58}$$

We can then check that the light-cone distribution amplitudes that we have computed fulfill the ERBL equation by computing explicitly  $\frac{\partial D^i(z)}{\partial \log \mu^2}$ . In the case of longitudinal polarization,

$$\begin{aligned}
\frac{\partial D^3(z)}{\partial \log \mu^2} &= 2\alpha_s C_F \left[ 2 \log x_0 + \frac{3}{2} \right] \delta\left(z - \frac{1}{2}\right) \int \frac{d\lambda}{4\pi} \phi_{q\bar{q}}^3(\lambda, \mathbf{0}) \\
&+ 4\alpha_s C_F \left[ \theta\left(z - \frac{1}{2}\right)(1-z) \left( 1 + \frac{1}{z - \frac{1}{2}} \right) + \theta\left(\frac{1}{2} - z\right)z \left( 1 + \frac{1}{\frac{1}{2} - z} \right) \right] \int \frac{d\lambda}{4\pi} \phi_{q\bar{q}}^3(\lambda, \mathbf{0}), \tag{59}
\end{aligned}$$



while for the transverse one,

$$\frac{\partial D^i(z)}{\partial \log \mu^2} = 2\alpha_s C_F \left[ 2 \log x_0 + \frac{3}{2} \right] \delta\left(z - \frac{1}{2}\right) \int \frac{d\lambda}{4\pi} \phi_{q\bar{q}}^i(\lambda, \mathbf{0}) + 4\alpha_s C_F \left[ \theta\left(z - \frac{1}{2}\right) \frac{1-z}{z-\frac{1}{2}} + \theta\left(\frac{1}{2}-z\right) \frac{z}{\frac{1}{2}-z} \right] \int \frac{d\lambda}{4\pi} \phi_{q\bar{q}}^i(\lambda, \mathbf{0}). \quad (60)$$

Thus, we have verified that we recover a standard ERBL evolution of the light-cone wave function. This is a check of our NLO wave function for the quark-antiquark Fock state in the short distance limit that is probed in a high virtuality (large  $Q^2$ ) process. We emphasize that the quark momentum scale (or coordinate separation) in the whole wave function (37) is controlled by the quark mass, and this full result can be used more generally than just in the large  $Q^2$  limit.

### V. RADIATIVE CORRECTIONS TO S-WAVE QUARKONIUM DECAY

The decay width of quarkonia to leptons offers an important constraint on the nonrelativistic wave function. In this section, we will see how the decay width is related to the light-cone wave function. We will see that our regularization involving a cutoff in the  $p^+$  momentum modifies the relation between the nonrelativistic wave function and the decay width compared to a usual rotationally invariant nonrelativistic potential model calculation.

The decay of quarkonium in a S-wave state into leptons is expressed in terms of the meson decay constant, which is defined as the matrix element of the electromagnetic current operator with the vector meson state [48]. The

current operator is local. As a consequence, at leading order, the decay constant is related to the value of the wave function at the origin. This is true both for the light-cone wave function and the nonrelativistic wave function. Beyond leading order, the relation between the decay constant and the nonrelativistic wave function receives a NLO correction [26]. In light-cone perturbation theory, on the other hand, the equivalent diagrams become corrections to the light-cone wave function itself, not to the relation with the decay constant. Equating the decay constants in terms of the light cone and nonrelativistic wave functions yields the equation

$$\int_0^1 dz \sum_n \Psi_{HQ}^n(z, \mathbf{0}_\perp) = \left( 1 - \frac{2\alpha_s C_F}{\pi} \right) \int d\lambda \phi(\lambda, \mathbf{0}), \quad (61)$$

where the sum in  $n$  is over all the Fock state components that contribute to the wave function at the origin. In the case of longitudinal polarization, the only component at NLO is  $n = q\bar{q}$ . For the transverse polarization, there is also a contribution where the overlap between the electromagnetic current operator and the vector meson state receives a correction from the  $n = q\bar{q}g$  Fock state, mediated by an instantaneous interaction. The different one-loop corrections are shown diagrammatically in Fig. 8.

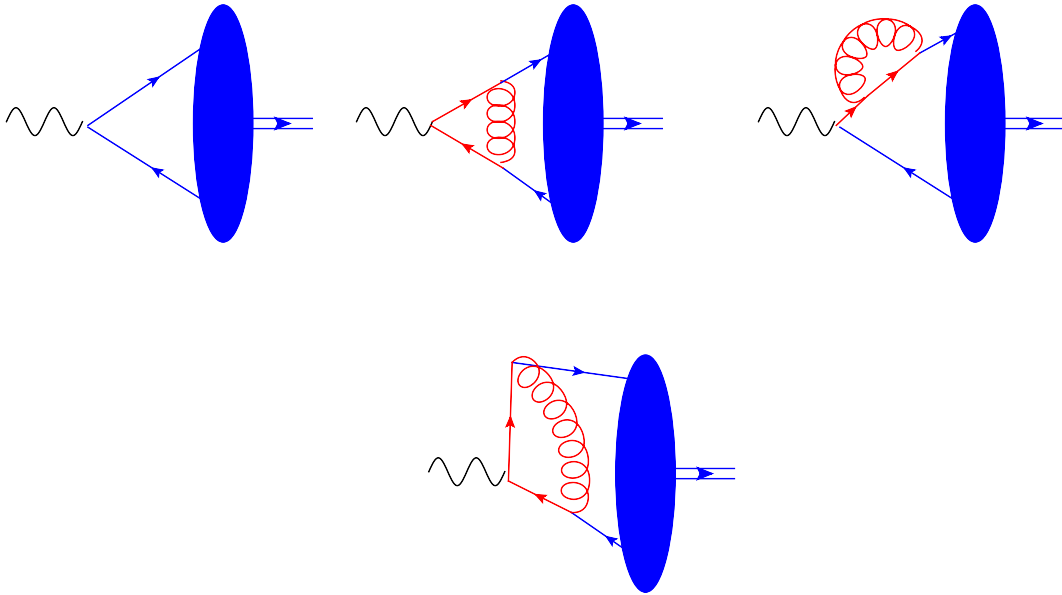


FIG. 8. Diagrams contributing to the overlap between the vector meson state and the electromagnetic current (photon). The color code is the same as in previous diagrams. In the diagram in the second line, the vertical quark line represents an instantaneous interaction in light-cone perturbation theory. This diagram vanishes for longitudinal polarization.

In the following, we shall concentrate, for simplicity, on the longitudinal polarization state. In this case, we have, by construction,

$$\int_0^1 dz \Psi_{HQ}^{q\bar{q}}(z, \mathbf{0}_\perp) = \int_0^1 dz D(z). \quad (62)$$

Therefore, we can do the computation using the light-cone distribution amplitude that we computed in the previous section. It is useful to note that

$$\int_0^1 dz K_L(z, 1/2) = 0. \quad (63)$$

Using this, in Eq. (52), we get

$$\int_0^1 dz \Psi_{HQ}^{q\bar{q}}(z, \mathbf{0}_\perp) = \left(1 + \frac{\alpha_s C_F}{\pi} \left(\frac{1}{x_0} - 2\right)\right) \int d\lambda \phi(\lambda, \mathbf{0}). \quad (64)$$

We see that, apart from a finite piece that coincides with the result in Ref. [26], we also get a divergent term. Its origin is the Coulomb singularity, which would not be present at this order in dimensional regularization.

Degrees of freedom with transverse momentum much smaller than  $m$  and  $z - \frac{1}{2}$  close to zero should be included only in  $\phi$ . However, when we computed Eq. (34), we did not include any mechanism to subtract them. Looking at Eq. (30), we can see that the only scale that affects the

transverse momentum when computing  $\Psi_{HQ}^{q\bar{q}}(z, \mathbf{0}_\perp)$  is  $2m(z - \frac{1}{2})$ . Then, because we are using dimensional regularization in the  $p_\perp$  integration, if we choose a cutoff  $x_0$  much bigger than the nonrelativistic velocity around the center of mass  $v$ , we can make sure of only taking into account relativistic degrees of freedom. However,  $\int d\lambda \phi(\lambda, \mathbf{0})$  will also depend on  $x_0$ . The condition that must be fulfilled is that the decay constant is independent of the cutoff  $x_0$ :

$$\begin{aligned} \frac{d}{dx_0} \int_0^1 dz \Psi_{HQ}^{q\bar{q}}(z, \mathbf{0}_\perp) \\ = -\frac{\alpha_s C_F}{\pi x_0^2} \int d\lambda \phi(\lambda, \mathbf{0}) + \frac{d}{dx_0} \int d\lambda \phi(\lambda, \mathbf{0}) = 0. \end{aligned} \quad (65)$$

In order to compute how  $\int d\lambda \phi(\lambda, \mathbf{0})$  depends on the cutoff, we can make use of Bethe-Salpeter equation represented in Fig. 3, following the lines of the discussion in Appendix B. Note that from the nonrelativistic point of view  $z \sim x_0$  or  $1 - z \sim x_0$  represents the ultraviolet since the quark relative longitudinal momentum is large. Therefore, we can substitute the kernel by a one gluon exchange between the quark and the antiquark and the nonrelativistic part of the wave function renormalization. Let us begin with the computation of the one gluon exchange part of the rhs of the Bethe-Salpeter equation of Fig. 3, that we name  $\Psi_{\text{sub}}^{q\bar{q}}$ ,

$$\{\Psi_{\text{sub}}^{q\bar{q}}\}^i(z, p_\perp) = \frac{2g^2 C_F}{(z - \frac{1}{2})^2 (p_\perp^2 + 4m^2(z - \frac{1}{2})^2)} \left( \left|z - \frac{1}{2}\right| + \frac{2m^2(z - \frac{1}{2})^2(1 - 2|z - \frac{1}{2}|)}{p_\perp^2 + 4m^2(z - \frac{1}{2})^2} \right) \int \frac{d\lambda}{4\pi} \phi_{q\bar{q}}^i(\lambda, \mathbf{0}). \quad (66)$$

From this expression, we can obtain

$$\{\Psi_{\text{sub}}^{q\bar{q}}\}^i(z, r_\perp = 0) = \frac{g^2 C_F (1 - 2|z - \frac{1}{2}|)}{4\pi (z - \frac{1}{2})^2} \int \frac{d\lambda}{4\pi} \phi_{q\bar{q}}^i(\lambda, \mathbf{0}) - \frac{g^2 C_F}{\pi |z - \frac{1}{2}|} \left( \frac{1}{D - 4} + \frac{1}{2} \log \left( \frac{m^2(z - \frac{1}{2})^2}{\pi \mu^2} \right) + \frac{\gamma_E}{2} \right) \int \frac{d\lambda}{4\pi} \phi_{q\bar{q}}^i(\lambda, \mathbf{0}), \quad (67)$$

and therefore

$$\begin{aligned} \frac{d}{dx_0} \int dz \{\Psi_{\text{sub}}^{q\bar{q}}\}^i(z, x_\perp = 0) &= 4\alpha_s C_F \left( \frac{1}{x_0^2} - \frac{1}{x_0} - \frac{2}{x_0} \log x_0 \right) \int \frac{d\lambda}{4\pi} \phi_{q\bar{q}}^i(\lambda, \mathbf{0}) \\ &\quad - \frac{8\alpha_s C_F}{x_0} \left( \frac{1}{D - 4} + \frac{1}{2} \log \left( \frac{m^2}{4\pi \mu^2} \right) + \frac{\gamma_E}{2} \right) \int \frac{d\lambda}{4\pi} \phi_{q\bar{q}}^i(\lambda, \mathbf{0}). \end{aligned} \quad (68)$$

The nonrelativistic part of the wave function renormalization is computed in Appendix A. Here, we use that

$$\frac{d}{dx_0} \delta Z_{\text{NR}} = \frac{\alpha_s C_F}{\pi x_0} (1 + 2 \log x_0) + \frac{2\alpha_s C_F}{\pi x_0} \left( \frac{1}{D - 4} + \frac{1}{2} \log \left( \frac{m^2}{4\pi \mu^2} \right) + \frac{\gamma_E}{2} \right). \quad (69)$$

Putting the two one-loop corrections pieces together, we get

$$\begin{aligned}
 \frac{d}{dx_0} \int d\lambda \phi_{q\bar{q}}^i(\lambda, \mathbf{0}) &= \frac{d}{dx_0} \delta Z_{\text{NR}} \int d\lambda \phi_{q\bar{q}}^i(\lambda, \mathbf{0}) \\
 &+ \frac{d}{dx_0} \int dz \{ \Psi_{\text{sub}}^{q\bar{q}} \}^i(z, x_\perp = 0) \\
 &= \frac{\alpha_s C_F}{\pi x_0^2} \int d\lambda \phi_{q\bar{q}}^i(\lambda, \mathbf{0}). \quad (70)
 \end{aligned}$$

We can then see that Eq. (65) is fulfilled and the dependence on the cutoff  $x_0$  cancels. Our regularization scheme with a cutoff  $x_0$  is not the same as conventional rotationally invariant dimensional regularization. Cutoff-dependent, not directly measurable, quantities do not need to be the same in both schemes. The nonrelativistic wave function at the origin is such a quantity; and indeed the relation between our wave function and the dimensionally reduced one of e.g., Ref. [26] is

$$\int d\lambda \phi_{q\bar{q}}^i(\lambda, \mathbf{0}) = \left(1 - \frac{\alpha_s C_F}{x_0}\right) \int d\lambda \{ \phi_{q\bar{q}}^i(\lambda, \mathbf{0}) \}_{\text{DR}}, \quad (71)$$

where the subscript DR means that this would be the result that we would have obtained if we had regulated all divergences using dimensional regularization. Then, the light-cone wave function at the origin, i.e., the vector meson decay constant, is related to the regularized non-relativistic wave function in the natural way,

$$\int_0^1 dz \Psi_{HQ}^{q\bar{q}}(z, \mathbf{0}_\perp) = \left(1 - \frac{2\alpha_s C_F}{\pi}\right) \int_0^1 d\lambda \{ \phi_{q\bar{q}}^i(\lambda, \mathbf{0}) \}_{\text{DR}}. \quad (72)$$

In conclusion, we recover the result in Ref. [26] after taking into account the different renormalization prescription. To our knowledge, this is the first computation of this relation (which can be directly related with the decay into leptons) done in light-cone perturbation theory.

Finally, let us discuss a more phenomenological explanation. We can use the experimental value of the decay into electrons to obtain the wave function at the origin as a function of  $x_0$ ,

$$\begin{aligned}
 \sum_{h,\bar{h}} \left| \int \frac{d\lambda}{4\pi} \phi^{q\bar{q}} \right|^2 &= \frac{3\pi m \Gamma_{\Psi \rightarrow e^+ e^-}}{N_c e_f^2 e^4} \left(1 + \frac{2\alpha_s C_F}{\pi} \left(\frac{1}{x_0} - 2\right)\right) \\
 &+ \mathcal{O}(\alpha_s^2). \quad (73)
 \end{aligned}$$

The formalism is consistent if we use the previous formula to compute the relation of another observable with the decay width into electrons, and we get a result that does not depend on  $x_0$ . In the following section, we are going to see that this is indeed the case.

## VI. EXCLUSIVE QUARKONIUM PRODUCTION

### A. Leading order

In this section, we study the cancellation of divergences in the photoproduction of the quarkonium with longitudinal polarization at NLO. In particular, we will show that the dependence on the dimensional regularization scale  $\mu$  cancels and that the dependence on the longitudinal momentum cutoff  $x_0$  can be factorized into the B-JIMWLK evolution of the target. To simplify the calculation, we assume that  $Q \gg m$ . This assumption does not modify ultraviolet or collinear divergences and has the advantage that we can use the same photon wave function that was used when studying massless quarks. Thus, our results can to some extent be seen as a reformulation of the result obtained for light vector mesons in a somewhat different language in Ref. [19].

The LO result is given by Eq. (15). The LO  $q\bar{q}$ -component of the photon wave function is [21]

$$\Psi_\gamma(z, r_\perp) = e e_f \sqrt{N_c} \delta_{h,-\bar{h}} 2Qz(1-z) \frac{K_0(\sqrt{z(1-z)} Q r_\perp)}{2\pi}, \quad (74)$$

where  $e_f$  is the charge of the corresponding quark. Regarding the cross section  $\sigma_{q\bar{q}}$ , its specific form is model dependent, and in general phenomenologically realistic models do not allow for an analytical treatment. Instead, we will use here the small  $r_\perp$  (dilute) limit

$$\sigma_{q\bar{q}}(z, r_\perp) \sim \frac{r_\perp^2 \sigma_0 Q_s^2(z)}{4}. \quad (75)$$

In this paper, we are going to discuss in general the structure of the divergences, in order to check the consistency of the method, and we are going to apply the dilute limit to get analytic results when possible.

Let us remind the reader of the LO result, which was computed in Ref. [20]. This can be obtained by writing the LO photon wave function in Eq. (15),

$$\begin{aligned}
 \frac{d\sigma_{T,L}^{r^*+N \rightarrow HQ+N}}{dt} \Big|_{\text{LO}} &= \frac{e^2 e_f^2 Q^2 N_c}{256\pi^3} \left| \sum_{h,\bar{h}} \int \frac{d\lambda}{4\pi} \phi^{q\bar{q}} \right|^2 \\
 &\times \left| \int d^2 r_\perp K_0\left(\frac{Q r_\perp}{2}\right) \sigma_{q\bar{q}}\left(\frac{1}{2}, r_\perp\right) \right|^2. \quad (76)
 \end{aligned}$$

In the dilute limit, this becomes

$$\frac{d\sigma_{T,L}^{r^*+N \rightarrow HQ+N}}{dt} \Big|_{\text{LO,dilute}} = \frac{4e^2 e_f^2 \sigma_0^2 Q_s^4 N_c}{\pi Q^6} \left| \sum_{h,\bar{h}} \int \frac{d\lambda}{4\pi} \phi^{q\bar{q}} \right|^2. \quad (77)$$

Using the relation between  $Q_s$  and the gluon density from [21]

$$\sigma_0 Q_s^2 = \frac{4\pi^2}{N_c} \alpha_s(\mu^2) x g(x, \mu^2) \quad (78)$$

and the relation between the quarkonium's wave function at the origin and its decay into electrons

$$\Gamma_{\Psi \rightarrow e^+ e^-}|_{\text{LO}} = \frac{N_c e_f^2 e^4}{3\pi m} \sum_{h, \bar{h}} \left| \int \frac{d\lambda}{4\pi} \phi^{q\bar{q}} \right|^2, \quad (79)$$

we get

$$\left. \frac{d\sigma_{T,L}^{\gamma^*+N \rightarrow HQ+N}}{dt} \right|_{\text{LO, dilute}} = \frac{96\pi^3 m \alpha_s^2(\mu^2) (xg(x, \mu^2))^2 \Gamma_{\Psi \rightarrow e^+ e^-}}{N_c^2 \alpha Q^6}, \quad (80)$$

which agrees with the classic result from Ref. [24] (and is four times the result found in Ref. [20]). Now, we move on to discuss the different corrections that this process gets at NLO, focusing on the longitudinal polarization state at  $Q \gg m$  where we can use results from the literature for massless quarks. At NLO, the production process gets contributions from both the  $q\bar{q}$  and the  $q\bar{q}g$  Fock states. In addition, we have to consider separately the corrections to the vector meson and the photon light-cone wave functions, although in the large  $Q^2$  limit, they behave in a similar way.

### B. NLO corrections to the $q\bar{q}$ -component of the photon wave function

We take the correction to the photon wave function from the recent computation [16]

$$\Psi_\gamma(z, r_\perp)|_{\text{NLO}} = \Psi_\gamma(z, r_\perp)|_{\text{LO}} (1 + \delta Z_\gamma(z, r_\perp)). \quad (81)$$

In our case, we are going to need the expression for  $z = \frac{1}{2}$ ,

$$\delta Z_\gamma\left(\frac{1}{2}, r_\perp\right) = -\frac{2C_F \alpha_s}{\pi} \left( \left( \log x_0 + \frac{3}{4} \right) \left( \frac{1}{D-4} - \frac{\gamma_E}{2} - \frac{1}{2} \log(\pi \mu^2 r_\perp^2) \right) + \frac{\pi^2}{24} - \frac{3}{4} \right). \quad (82)$$

The effect of this correction on quarkonium production is the following:

$$\begin{aligned} \left. \frac{d\sigma_{T,L}^{\gamma^*+N \rightarrow HQ+N}}{dt} \right|_{\text{NLO}, \gamma} &= \frac{e^2 e_f^2 Q^2 N_c}{128\pi^3} \left| \sum_{h, \bar{h}} \int \frac{d\lambda}{4\pi} \phi^{q\bar{q}} \right|^2 \left( \int d^2 r_\perp \delta Z_\gamma\left(\frac{1}{2}, r_\perp\right) K_0\left(\frac{Q r_\perp}{2}\right) \sigma_{q\bar{q}}\left(\frac{1}{2}, r_\perp\right) \right) \\ &\times \left( \int d^2 r'_\perp K_0\left(\frac{Q r'_\perp}{2}\right) \sigma_{q\bar{q}}\left(\frac{1}{2}, r'_\perp\right) \right)^*. \end{aligned} \quad (83)$$

In the dilute limit, this is

$$\begin{aligned} \left. \frac{d\sigma_{T,L}^{\gamma^*+N \rightarrow HQ+N}}{dt} \right|_{\text{NLO}, \gamma, \text{dilute}} &= -\frac{16C_F \alpha_s e^2 e_f^2 \sigma_0^2 Q_s^4 N_c}{\pi^2 Q^6} \left( \left( \log x_0 + \frac{3}{4} \right) \left( \frac{1}{D-4} + \frac{\gamma_E}{2} + \frac{1}{2} \log\left(\frac{Q^2}{4\pi\mu^2}\right) - 1 - \log 2 \right) + \frac{\pi^2}{24} - \frac{3}{4} \right) \left| \sum_{h, \bar{h}} \int \frac{d\lambda}{4\pi} \phi^{q\bar{q}} \right|^2. \end{aligned} \quad (84)$$

### C. NLO corrections to the $q\bar{q}$ -component of the quarkonium wave function

In this subsection, we will compute one-loop corrections to the  $q\bar{q}$ -component of the quarkonium wave function in the hard scattering limit. We will first study the divergence structure in the general case and then perform the computation in the dilute limit for the dipole-target scattering amplitude. Using Eq. (19), the contribution that we are studying in this subsection is

$$\left. \frac{d\sigma_{T,L}^{\gamma^*+N \rightarrow HQ+N}}{dt} \right|_{\text{NLO}, \text{HQ}} = \frac{\left| \int \frac{d\lambda}{4\pi} \phi^{q\bar{q}} \right|^2}{8\pi} \left( \int d^2 r_\perp \int_0^1 \frac{dz}{4\pi} (C_{q\bar{q} \leftarrow q\bar{q}}^0)^* (\Psi_\gamma^*)_L \sigma_{q\bar{q}} \right) \left( \int d^2 r'_\perp (\Psi_\gamma^*)_L \sigma_{q\bar{q}} \right)^*. \quad (85)$$

First, we look at the dependence on  $\mu$ . For this, we note that  $\sigma_{q\bar{q}}$  goes like  $r_\perp^2$  in the small  $r_\perp$  region, while both  $C_{q\bar{q}\leftarrow q\bar{q}}^0$  and  $(\Psi_{\gamma^*})_L$  go like  $\log r_\perp$ . On the other hand, for large  $r_\perp$ , both wave functions are exponentially suppressed. Therefore, we conclude that the only dependence on  $\mu$  comes from the wave function renormalization of the heavy quarks. Therefore,

$$\frac{d}{d\mu} \frac{d\sigma_{T,L}^{\gamma^*+N\rightarrow HQ+N}}{dt} \Big|_{\text{NLO,HQ}} = \frac{e^2 e_f^2 Q^2 N_c}{128\pi^3} \frac{d\delta Z}{d\mu} \left| \sum_{h,\bar{h}} \int \frac{d\lambda}{4\pi} \phi^{q\bar{q}} \right|^2 \left| \int d^2 r_\perp K_0 \left( \frac{Qr_\perp}{2} \right) \sigma_{q\bar{q}} \left( \frac{1}{2}, r_\perp \right) \right|^2. \quad (86)$$

Note that  $\frac{d\delta Z}{d\mu} = \frac{d\delta Z_\gamma(\frac{1}{2}, r_\perp)}{d\mu}$ . This means that the dependence on  $\mu$  of the wave functions of the photon and heavy quarkonium is the same. This should not be surprising, since in the hard scattering limit both come from a perturbative one-gluon exchange between the quarks.

Now, we focus on the dependence on  $x_0$ . For the longitudinal polarization state where the wave function is azimuthally symmetric, it is convenient to work again with the angularly integrated wave function. We first note that

$$\int d\theta_r \frac{d}{dx_0} \int dz \{ \Psi_{HQ}^{q\bar{q}} \}_{\lambda_1 \lambda_2}^3(z, r_\perp) \Big|_{\text{Fig.6}} = -\frac{4\alpha_s C_F}{x_0^2} \left[ \frac{1}{2} - x_0 \left( \log \left( \frac{mx_0 r_\perp}{2} \right) + \gamma_E + \frac{1}{2} \right) \right] \int d\lambda \phi_{q\bar{q}}^3(\lambda, \mathbf{0}). \quad (87)$$

Using this and computing  $\frac{d\delta Z}{dx_0}$ , we get

$$\begin{aligned} \frac{d}{dx_0} \frac{d\sigma_{T,L}^{\gamma^*+N\rightarrow HQ+N}}{dt} \Big|_{\text{NLO,HQ}} &= -\frac{\alpha_s C_F e^2 e_f^2 Q^2 N_c}{128\pi^4 x_0^2} \left| \sum_{h,\bar{h}} \int \frac{d\lambda}{4\pi} \phi^{q\bar{q}} \right|^2 \left| \int d^2 r_\perp K_0 \left( \frac{Qr_\perp}{2} \right) \sigma_{q\bar{q}} \left( \frac{1}{2}, r_\perp \right) \right|^2 \\ &+ \frac{e^2 e_f^2 Q^2 N_c}{128\pi^3} \left| \sum_{h,\bar{h}} \int \frac{d\lambda}{4\pi} \phi^{q\bar{q}} \right|^2 \left( \int d^2 r_\perp \frac{d\delta Z_\gamma(\frac{1}{2}, r_\perp)}{dx_0} K_0 \left( \frac{Qr_\perp}{2} \right) \sigma_{q\bar{q}} \left( \frac{1}{2}, r_\perp \right) \right) \\ &\times \left( \int d^2 r'_\perp K_0 \left( \frac{Qr'_\perp}{2} \right) \sigma_{q\bar{q}} \left( \frac{1}{2}, r'_\perp \right) \right)^*. \end{aligned} \quad (88)$$

The first term on the rhs will be canceled by the dependence of the nonrelativistic quarkonium wave function on  $x_0$ , cf. Eq. (65). The other terms have the same dependence on  $x_0$  as the contribution of the NLO corrections to the photon wave function.

Now, we move to the dilute limit, in which we wish to obtain an analytic expression in the limit  $Q \gg m$ . Note that this implies that if  $Qr_\perp \sim 1$  then  $mr_\perp \ll 1$ , while if  $mr_\perp \sim 1$ , then the photon wave function is exponentially suppressed. Therefore, we can use the quarkonium wave function in the  $mr_\perp \ll 1$  limit. As a starting point, we take Eq. (41),

$$\begin{aligned} &\int d\theta_r C_{q\bar{q}\leftarrow q\bar{q}}^0(z, \mathbf{r}_\perp; \lambda_1, \lambda_2; \lambda'_1, \lambda'_2)_{\text{long}} \Big|_{mr_\perp \ll 1} \\ &= 8\pi^2 \delta \left( z - \frac{1}{2} \right) (1 + \delta Z) \delta_{\lambda_1 \lambda'_1} \delta_{\lambda_2 \lambda'_2} - \frac{4g^2 C_F z(1-z) \delta_{\lambda_1 \lambda'_1} \delta_{\lambda_2 \lambda'_2}}{(z - \frac{1}{2})^2} \left\{ \log \left( \frac{\tau}{2} \right) + \gamma_E \right. \\ &\quad \left. + \left( \theta \left( z - \frac{1}{2} \right) (1-z) + \theta \left( \frac{1}{2} - z \right) z \right) \left[ \frac{(z - \frac{1}{2})^2 - \frac{1}{2}}{z(1-z)} \left( \log \left( \frac{\tau}{2} \right) + \gamma_E + \frac{1}{2} \right) + \frac{(z - \frac{1}{2})^2}{2z(1-z)} \right] \right\}. \end{aligned} \quad (89)$$

It is convenient to separate this into  $r_\perp$ -independent and  $r_\perp$ -dependent pieces as

$$\begin{aligned} &\lim_{r_\perp \rightarrow 0} \int d\theta_r C_{q\bar{q}\leftarrow q\bar{q}}^0(z, \mathbf{r}_\perp; \lambda_1, \lambda_2; \lambda'_1, \lambda'_2)_{\text{long}} \\ &= 8\pi^2 \delta \left( z - \frac{1}{2} \right) (1 + \delta Z) \delta_{\lambda_1 \lambda'_1} \delta_{\lambda_2 \lambda'_2} + \delta C(z) - 4g^2 C_F \delta_{\lambda_1 \lambda'_1} \delta_{\lambda_2 \lambda'_2} \log(Q\sqrt{z(1-z)}r_\perp) \\ &\quad \times \left[ \theta \left( z - \frac{1}{2} \right) (1-z) \left( 1 + \frac{1}{z - \frac{1}{2}} \right) + \theta \left( \frac{1}{2} - z \right) z \left( 1 + \frac{1}{\frac{1}{2} - z} \right) \right], \end{aligned} \quad (90)$$

where



$$\delta C(z) = -\frac{4g^2 C_F z(1-z)\delta_{\lambda_1, \lambda'_1} \delta_{\lambda_2, \lambda'_2}}{(z-\frac{1}{2})^2} \left[ \log\left(\frac{m|z-\frac{1}{2}|}{Q\sqrt{z(1-z)}}\right) + \gamma_E \right. \\ \left. + \left( \theta\left(z-\frac{1}{2}\right)(1-z) + \theta\left(\frac{1}{2}-z\right)z \right) \left[ \frac{(z-\frac{1}{2})^2 - \frac{1}{2}}{z(1-z)} \left( \log\left(\frac{m|z-\frac{1}{2}|}{Q\sqrt{z(1-z)}}\right) + \gamma_E + \frac{1}{2} \right) + \frac{(z-\frac{1}{2})^2}{2z(1-z)} \right] \right]. \quad (91)$$

The final result for the  $q\bar{q}$ -component of the vector meson wave function that we obtain is

$$\frac{d\sigma_{T,L}^{\gamma^*+N\rightarrow HQ+N}}{dt} \Big|_{\text{NLO}, HQ, \text{dilute}} = -\frac{16C_F \alpha_s e^2 e_f^2 \sigma_0^2 Q^4 N_c}{\pi^2 Q^6} \left[ \log x_0 \left( \frac{1}{D-4} + \frac{1}{2} \log\left(\frac{Q^2}{4\pi\mu^2}\right) + \frac{\gamma_E}{2} - 1 - \log 2 \right) \right. \\ \left. + \frac{3}{4} \left( \frac{1}{D-4} + \frac{1}{2} \log\left(\frac{m^2}{4\pi\mu^2}\right) + \frac{\gamma_E}{2} \right) - \frac{1}{2} + \frac{Li_2(1)}{2} - Li_2\left(\frac{1}{2}\right) \right. \\ \left. + \frac{\pi^2}{24} - \frac{1}{2} \log 2 \left( \log\left(\frac{m}{Q}\right) + 1 \right) \right] \left| \sum_{h, \bar{h}} \int \frac{d\lambda}{4\pi} \phi^{q\bar{q}} \right|^2. \quad (92)$$

Note that the divergences of this part, both in  $\mu$  and  $x_0$ , are the same as in the photon wave function (84).

#### D. Contribution of the $q\bar{q}g$ Fock state

We now move to the  $q\bar{q}g$  Fock state, which interacts with the target with the scattering amplitude  $\sigma_{q\bar{q}g}$ . Note that the NLO correction to the cross section is given by the interference of this NLO correction to the amplitude with the leading-order amplitude that only involves a  $q\bar{q}$  state (and of course the complex conjugate). This contribution to the cross section is given by

$$\frac{d\sigma_{T,L}^{\gamma^*+N\rightarrow HQ+N}}{dt} \Big|_{\text{NLO}, q\bar{q}g} = \frac{|\int \frac{d\lambda}{4\pi} \phi^{q\bar{q}}|^2}{8\pi} \left( \int d^2 r_\perp d^2 l_\perp \int_0^1 \frac{dz}{4\pi} (C_{q\bar{q}g \leftarrow q\bar{q}}^0)^* (\Psi_{\gamma^*}^{q\bar{q}g})_L \sigma_{q\bar{q}g} \right) \left( \int d^2 r'_\perp (\Psi_{\gamma^*}^{q\bar{q}})_L \sigma_{q\bar{q}} \right)^*, \quad (93)$$

where  $r_\perp$  and  $l_\perp$  are defined as in Eq. (45), with  $r_\perp$  roughly interpreted as the large distance separating the nonrelativistic antiquark from the system of a relativistic quark and gluon, which has a small size  $l_\perp$ . These coordinate assignments are demonstrated in Fig. 9. Since we are working in the hard scattering limit  $Q \gg M$ , the wave function of the photon can be taken from the massless quark calculation in Ref. [16], which using our notation and normalization and fixing the antiquark to be nonrelativistic is

$$\Psi_{\gamma^*}^{q\bar{q}g} = \frac{e e_f g \sqrt{N_c} Q}{m \sqrt{x(1-x)}} \epsilon_{\lambda_G}^{A, j^*} \bar{u}(\hat{p}_{RQ}, \lambda_{RQ}) T^A \not{n} \left[ \left( \frac{2-x}{2} \right) \delta^{jm} + \frac{x}{4} [\gamma^j, \gamma^m] \right] v(mv, \lambda_{\bar{Q}}) \mathcal{I}^m(a) \\ - \frac{e e_f g \sqrt{N_c} Q (1-x)}{m \sqrt{x(1-x)}} \epsilon_{\lambda_G}^{A, j^*} \bar{u}(\hat{p}_{RQ}, \lambda_{RQ}) T^A \not{n} \left[ \left( \frac{2+x}{2} \right) \gamma^{jm} - \frac{x}{4} [\gamma^j, \gamma^m] \right] v(mv, \lambda_{\bar{Q}}) \mathcal{I}^m(b), \quad (94)$$

where

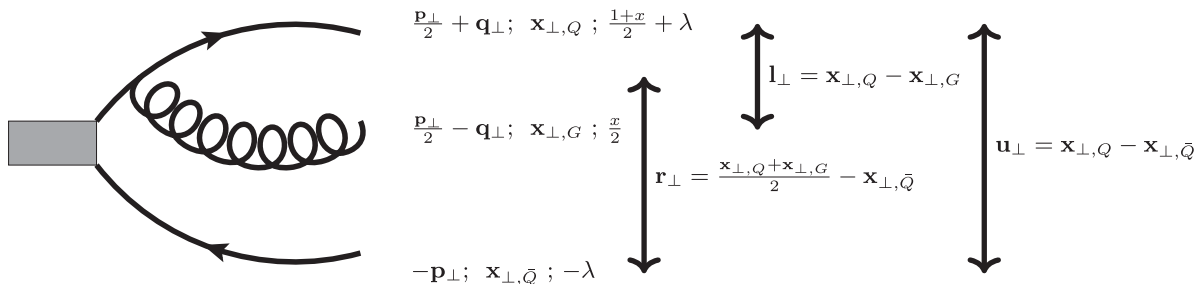


FIG. 9. Transverse momentum, transverse coordinate, and longitudinal momentum fraction assignments for the  $q\bar{q}g$  Fock state, and the definitions of the coordinate separations  $\mathbf{r}_\perp$ ,  $\mathbf{l}_\perp$ ,  $\mathbf{u}_\perp$  in terms of these.

$$\mathcal{I}^m(a) = (\mu^2)^{2-\frac{D}{2}} \int \frac{d^{D-2} p_\perp}{(2\pi)^{D-2}} \int \frac{d^{D-2} k_\perp}{(2\pi)^{D-2}} \frac{k_\perp^m e^{-i\mathbf{k}_\perp \cdot \mathbf{l}_\perp} e^{i\mathbf{p}_\perp \cdot (\mathbf{r}_\perp + \frac{1-x}{2}\mathbf{l}_\perp)}}{(p_\perp^2 + \frac{Q^2}{4})(k_\perp^2 + 2x(1-x)(p_\perp^2 + \frac{Q^2}{4}))}, \quad (95)$$

and

$$\mathcal{I}^m(b) = (\mu^2)^{2-\frac{D}{2}} \int \frac{d^{D-2} p_\perp}{(2\pi)^{D-2}} \int \frac{d^{D-2} k_\perp}{(2\pi)^{D-2}} \frac{k_\perp^m e^{i\mathbf{k}_\perp \cdot (\mathbf{r}_\perp - \frac{1}{2}\mathbf{l}_\perp)} e^{i\mathbf{p}_\perp \cdot (\frac{\mathbf{r}_\perp}{1+x} + \frac{1+2x}{2(1+x)}\mathbf{l}_\perp)}}{(p_\perp^2 + \frac{(1-x^2)Q^2}{4})(k_\perp^2 + \frac{2x}{(1-x)(1+x)^2}(p_\perp^2 + \frac{(1-x^2)Q^2}{4}))}. \quad (96)$$

As in the inclusive DIS case [16,17], there are cancellations of divergences between the  $q\bar{q}$  and  $q\bar{q}g$  states. To make these manifest, it is useful to separate the contribution into two different terms, by adding and subtracting a term that involves a  $q\bar{q}$  scattering amplitude,

$$\begin{aligned} \left. \frac{d\sigma_{T,L}^{\gamma^*+N \rightarrow HQ+N}}{dt} \right|_{\text{NLO}, q\bar{q}g} &= \frac{|\int \frac{d\lambda}{4\pi} \phi^{q\bar{q}}|^2}{8\pi} \left( \int d^2 r_\perp d^2 l_\perp \int_0^1 \frac{dz}{4\pi} (C_{q\bar{q}g \leftarrow q\bar{q}}^0)^* (\Psi_{\gamma^*}^{q\bar{q}g})_L (\sigma_{q\bar{q}g} - \sigma_{q\bar{q}}) \right) \left( \int d^2 r'_\perp (\Psi_{\gamma^*}^{q\bar{q}})_L \sigma_{q\bar{q}} \right)^* \\ &+ \frac{|\int \frac{d\lambda}{4\pi} \phi^{q\bar{q}}|^2}{8\pi} \left( \int d^2 r_\perp d^2 l_\perp \int_0^1 \frac{dz}{4\pi} (C_{q\bar{q}g \leftarrow q\bar{q}}^0)^* (\Psi_{\gamma^*}^{q\bar{q}g})_L \sigma_{q\bar{q}} \right) \left( \int d^2 r'_\perp (\Psi_{\gamma^*}^{q\bar{q}})_L \sigma_{q\bar{q}} \right)^*. \end{aligned} \quad (97)$$

Note that the argument of  $\sigma_{q\bar{q}}$  is the separation between the quark and the antiquark, which is  $\mathbf{u}_\perp = \mathbf{r}_\perp + \frac{1}{2}\mathbf{l}_\perp$  for the  $q\bar{q}g$  Fock state wave function; see Fig. 9.

First, we discuss the possible  $\mu$  dependence. Note that this is related with the limit  $l_\perp \rightarrow 0$ . In this limit,  $\sigma_{q\bar{q}g} - \sigma_{q\bar{q}}$  also vanishes. Therefore, we only need to focus on the second line in Eq. (97). For small values of  $m x l_\perp$ , using the formula in Appendix D,

$$C_{q\bar{q}g \leftarrow q\bar{q}}^0 \sim -\frac{ig(1-\frac{x}{2})l_\perp^i \epsilon_\perp^{*A,j}(\lambda_G)}{2\pi\sqrt{x(1-x)}m l_\perp^2} \left( \frac{1}{\pi l_\perp^2 \mu^2} \right)^{\frac{D-4}{2}} \Gamma\left(\frac{D-2}{2}\right) \sum_{\lambda_Q} \bar{u}(\hat{p}_{RQ}, \lambda_{RQ}) T^A \left[ \delta^{ij} - \frac{x}{4(1-\frac{x}{2})} [\gamma_\perp^i, \gamma_\perp^j] \right] \not{n} u(mv, \lambda_Q). \quad (98)$$

Regarding  $\Psi_{\gamma^*}^{q\bar{q}g}$ , we can approximate

$$\mathcal{I}^m(a) = -\frac{i2^{D-4} l_\perp^m \mu^{4-D}}{(4\pi)^{\frac{D-2}{2}} l_\perp^{D-2}} \Gamma\left(\frac{D-2}{2}\right) \int \frac{d^{D-2} p_\perp}{(2\pi)^{D-2}} \frac{e^{i\mathbf{p}_\perp \cdot (\mathbf{u}_\perp - x\mathbf{l}_\perp)}}{(p_\perp^2 + \frac{Q^2}{4})}, \quad (99)$$

and

$$\mathcal{I}^m(b) = 0. \quad (100)$$

Note that this approximation keeps the correct small  $l_\perp$  behavior without introducing additional ultraviolet divergences. Therefore, in this limit, we can write

$$(C_{q\bar{q}g \leftarrow q\bar{q}}^0)^* (\Psi_{\gamma^*}^{q\bar{q}g})_L = \frac{ee_f g^2 C_F \sqrt{N_c} Q}{2\pi^2 l_\perp^2} \left( \frac{1}{\pi l_\perp^2 \mu^2} \right)^{D-4} \left( \Gamma\left(\frac{D-2}{2}\right) \right)^2 \frac{1}{x} \left( 1-x + \frac{x^2}{2} \right) \int \frac{d^{D-2} p_\perp}{(2\pi)^{D-2}} \frac{e^{i\mathbf{p}_\perp \cdot (\mathbf{u}_\perp - x\mathbf{l}_\perp)}}{(p_\perp^2 + \frac{Q^2}{4})}. \quad (101)$$

Performing the integration over  $l_\perp$ , we obtain

$$\begin{aligned} &\mu^{4-D} \int d^{D-2} l_\perp (C_{q\bar{q}g \leftarrow q\bar{q}}^0)^* (\Psi_{\gamma^*}^{q\bar{q}g})_L \\ &= \frac{ee_f g^2 C_F \sqrt{N_c} Q}{2\pi} \left( \frac{x^2}{4\pi\mu^2} \right)^{\frac{D-4}{2}} \frac{\Gamma(\frac{4-D}{2})}{\Gamma(D-3)} \left( \Gamma\left(\frac{D-2}{2}\right) \right)^2 \frac{1}{x} \left( 1-x + \frac{x^2}{2} \right) \int \frac{d^{D-2} p_\perp}{(2\pi)^{D-2}} \frac{p_\perp^{D-4} e^{i\mathbf{p}_\perp \cdot \mathbf{u}_\perp}}{(p_\perp^2 + \frac{Q^2}{4})}. \end{aligned} \quad (102)$$

Note that, since we performed approximations valid in the limit  $l_\perp \rightarrow 0$ , we can only claim at the moment to capture the ultraviolet behavior, or in other words the  $\mu$  dependence. This is captured by the following equation:

$$\frac{d}{d\mu} \left( \mu^{4-D} \int \frac{dx}{4\pi} \int d^{D-2} l_\perp (C_{q\bar{q}g \leftarrow q\bar{q}}^0 (\Psi_{\gamma^*}^{q\bar{q}g})_L) = -\frac{ee_f \alpha_s C_F \sqrt{N_c} Q}{2\pi^2 \mu} \left( \log x_0 + \frac{3}{4} \right) K_0 \left( \frac{r_\perp Q}{2} \right) = -\frac{dZ}{d\mu} \Psi_\gamma \left( \frac{1}{2}, r_\perp \right). \quad (103)$$

This is required so that the  $\mu$  dependence of the contribution from the  $q\bar{q}g$  Fock state crossing the target shock will cancel against the  $\mu$  dependence of quark wave function renormalization, which is a contribution where only the  $q\bar{q}$  dipole crosses the shock wave.

Now, we focus on the dependence on  $x_0$ . In the  $x \rightarrow x_0$  limit, we can write

$$\Psi_{\gamma^*}^{q\bar{q}g} = \frac{ee_f g \sqrt{2N_c} Q \delta_{\lambda_{RQ}, -\lambda_Q}}{\sqrt{x}} \epsilon_{\lambda_G}^{A,j*} (\mathcal{I}^j(a) - \mathcal{I}^j(b)) T^A, \quad (104)$$

where

$$\begin{aligned} \mathcal{I}^j(a) - \mathcal{I}^j(b) &= (\mu^2)^{2-\frac{D}{2}} \int \frac{d^{D-2} k_\perp}{(2\pi)^{D-2}} \frac{k_\perp^j e^{-i\mathbf{k}_\perp \mathbf{l}_\perp} (1 - e^{i\mathbf{k}_\perp \mathbf{u}_\perp})}{k_\perp^2} \int \frac{d^{D-2} p_\perp}{(2\pi)^{D-2}} \frac{e^{i\mathbf{p}_\perp \mathbf{u}_\perp}}{(p_\perp^2 + \frac{Q^2}{4})} \\ &= -\frac{i\Gamma(\frac{D-2}{2})}{2\pi^{\frac{D-2}{2}}} \left( \frac{l_\perp^j}{l_\perp^{D-2}} + \frac{u_\perp^j - l_\perp^j}{|u_\perp - l_\perp|^{D-2}} \right) (\mu^2)^{2-\frac{D}{2}} \int \frac{d^{D-2} p_\perp}{(2\pi)^{D-2}} \frac{e^{i\mathbf{p}_\perp \mathbf{u}_\perp}}{(p_\perp^2 + \frac{Q^2}{4})}. \end{aligned} \quad (105)$$

Looking at the original expressions for  $\mathcal{I}^j(a)$  and  $\mathcal{I}^j(b)$ , we might wonder if by simplifying the pole in  $k_\perp$  we are modifying the  $x_0$  dependence. However, note that for small  $x_0$  the integral is only sensitive to the exact value of the pole in the infrared. The infrared limit of  $\mathcal{I}^j(a)$  cancels with that of  $\mathcal{I}^j(b)$  for  $x$  close to  $x_0$ , and therefore this sensitivity is canceled out. In the previous formula, this cancellation is given by the factor  $(1 - e^{i\mathbf{k}_\perp \mathbf{u}_\perp})$ .

Regarding  $C_{q\bar{q}g \leftarrow q\bar{q}}^0$ , in the  $x \rightarrow x_0$  limit, we can approximate it by

$$C_{q\bar{q}g \leftarrow q\bar{q}}^0 \sim -\frac{ig\Gamma(\frac{D-2}{2})\epsilon_\perp^{*A,i}(\lambda_G)T^A\delta_{\lambda_{RQ},\lambda_Q}l_\perp^i}{\sqrt{2x\pi^{\frac{D-2}{2}}l_\perp^{D-2}}}. \quad (106)$$

Therefore, we get coefficient for the  $q\bar{q}g$ -component in the meson wave function as

$$\begin{aligned} (C_{q\bar{q}g \leftarrow q\bar{q}}^0 (\Psi_{\gamma^*}^{q\bar{q}g})_L) &\sim \frac{ee_f g^2 C_F \sqrt{N_c} Q \delta_{\lambda_Q, -\lambda_{\bar{Q}}}}{4\pi^{D-2} x} \left( \Gamma \left( \frac{D-2}{2} \right) \right)^2 \mu^{4-D} \left( \frac{2(\mathbf{u}_\perp - \mathbf{l}_\perp) \mathbf{l}_\perp}{|\mathbf{u}_\perp - \mathbf{l}_\perp|^{D-2} l_\perp^{D-2}} + \frac{1}{l_\perp^{2D-6}} + \frac{1}{|\mathbf{u}_\perp - \mathbf{l}_\perp|^{2D-6}} \right) \\ &\quad \times \int \frac{d^{D-2} p_\perp}{(2\pi)^{D-2}} \frac{e^{i\mathbf{p}_\perp \mathbf{u}_\perp}}{(p_\perp^2 + \frac{Q^2}{4})} \\ &= \frac{g^2 C_F}{2\pi^{D-2} x} \left( \Gamma \left( \frac{D-2}{2} \right) \right)^2 \mu^{4-D} \left( \frac{2(\mathbf{u}_\perp - \mathbf{l}_\perp) \mathbf{l}_\perp}{|\mathbf{u}_\perp - \mathbf{l}_\perp|^{D-2} l_\perp^{D-2}} + \frac{1}{l_\perp^{2D-6}} + \frac{1}{|\mathbf{u}_\perp - \mathbf{l}_\perp|^{2D-6}} \right) \Psi_\gamma \left( \frac{1}{2}, u_\perp \right). \end{aligned}$$

Using these formulas we can compute the dependence on the cutoff  $x_0$  separately for the two parts of the decomposition (97)

$$\frac{d}{dx_0} \int_{x_0}^1 \frac{dx}{4\pi} \int d^{D-2} u_\perp \int d^{D-2} l_\perp (C_{q\bar{q}g \leftarrow q\bar{q}}^0 (\Psi_{\gamma^*}^{q\bar{q}g})_L (\sigma_{q\bar{q}g} - \sigma_{q\bar{q}}) + \frac{d}{dx_0} \int_{x_0}^1 \frac{dx}{4\pi} \int d^{D-2} u_\perp \int d^{D-2} l_\perp (C_{q\bar{q}g \leftarrow q\bar{q}}^0 (\Psi_{\gamma^*}^{q\bar{q}g})_L \sigma_{q\bar{q}}. \quad (107)$$

The first term gives

$$-\frac{\alpha_s C_F \mu^{4-D}}{2\pi^{D-2} x_0} \left( \Gamma\left(\frac{D-2}{2}\right) \right)^2 \int d^{D-2} u_\perp \int d^{D-2} l_\perp \left( \frac{2(\mathbf{u}_\perp - \mathbf{l}_\perp) \mathbf{l}_\perp}{|\mathbf{u}_\perp - \mathbf{l}_\perp|^{D-2} l_\perp^{D-2}} + \frac{1}{l_\perp^{2D-6}} + \frac{1}{|\mathbf{u}_\perp - \mathbf{l}_\perp|^{2D-6}} \right) (\sigma_{q\bar{q}g} - \sigma_{q\bar{q}}) \Psi_\gamma\left(\frac{1}{2}, u_\perp\right). \quad (108)$$

Since the  $l_\perp$  integration introduces no divergences [recall that  $(\sigma_{q\bar{q}g} - \sigma_{q\bar{q}}) \rightarrow 0$  when  $l_\perp \rightarrow 0$ ], we can take the exact limit  $D = 4$ . Then, we get

$$-\frac{\alpha_s C_F}{2\pi^2 x_0} \int d^2 u_\perp \int d^2 l_\perp \frac{u_\perp^2}{|\mathbf{u}_\perp - \mathbf{l}_\perp|^2 l_\perp^2} (\sigma_{q\bar{q}g} - \sigma_{q\bar{q}}) \Psi_\gamma\left(\frac{1}{2}, u_\perp\right) = -\frac{1}{2} \int d^2 u_\perp \frac{d\sigma_{q\bar{q}}}{dx_0} \Psi_\gamma\left(\frac{1}{2}, u_\perp\right), \quad (109)$$

where in the last equality we have used the B-JIMWLK equation [35–42]. The other contribution, depending only on the  $q\bar{q}$  amplitude, that was added and subtracted in the decomposition (97) becomes

$$\begin{aligned} & -\frac{\alpha_s C_F \mu^{4-D}}{2\pi^{D-2} x_0} \left( \Gamma\left(\frac{D-2}{2}\right) \right)^2 \int d^{D-2} u_\perp \int d^{D-2} l_\perp \left( \frac{2(\mathbf{u}_\perp - \mathbf{l}_\perp) \mathbf{l}_\perp}{|\mathbf{u}_\perp - \mathbf{l}_\perp|^{D-2} l_\perp^{D-2}} + \frac{1}{l_\perp^{2D-6}} + \frac{1}{|\mathbf{u}_\perp - \mathbf{l}_\perp|^{2D-6}} \right) \sigma_{q\bar{q}} \Psi_\gamma\left(\frac{1}{2}, u_\perp\right) \\ & = \frac{2\alpha_s C_F}{\pi x_0} \int d^{D-2} r_\perp \left( \frac{1}{D-4} - \frac{\gamma_E}{2} - \frac{1}{2} \log(\pi r_\perp^2 \mu^2) \right) \sigma_{q\bar{q}} \Psi_\gamma\left(\frac{1}{2}, r_\perp\right) = - \int d^{D-2} r_\perp \frac{d}{dx_0} Z_\gamma\left(\frac{1}{2}, r_\perp\right) \sigma_{q\bar{q}} \Psi_\gamma\left(\frac{1}{2}, r_\perp\right). \end{aligned} \quad (110)$$

Finally, we put all the pieces together. Note that until now we have only explicitly shown the computation in the case in which the intermediate quark is relativistic and the antiquark is nonrelativistic. However, the opposite case also gives a contribution, which is, due to symmetry considerations, exactly equal. Taking this into account, we get

$$\begin{aligned} \left. \frac{d}{d\mu} \frac{d\sigma_{T,L}^{\gamma^*+N \rightarrow HQ+N}}{dt} \right|_{\text{NLO}, q\bar{q}g} &= -\frac{e^2 e_f^2 Q^2 N_c}{64\pi} \left| \sum_{h,\bar{h}} \int \frac{d\lambda}{4\pi} \phi^{q\bar{q}} \right|^2 \left( \int d^2 r_\perp \frac{dZ}{d\mu} K_0\left(\frac{Qr_\perp}{2}\right) \sigma_{q\bar{q}}\left(\frac{1}{2}, r_\perp\right) \right) \\ &\quad \times \left( \int d^2 r'_\perp K_0\left(\frac{Qr'_\perp}{2}\right) \sigma_{q\bar{q}}\left(\frac{1}{2}, r'_\perp\right) \right)^*, \end{aligned} \quad (111)$$

and

$$\begin{aligned} \left. \frac{d}{dx_0} \frac{d\sigma_{T,L}^{\gamma^*+N \rightarrow HQ+N}}{dt} \right|_{\text{NLO}, q\bar{q}g} &= -\frac{e^2 e_f^2 Q^2 N_c}{128\pi} \left| \sum_{h,\bar{h}} \int \frac{d\lambda}{4\pi} \phi^{q\bar{q}} \right|^2 \left( \int d^2 r_\perp K_0\left(\frac{Qr_\perp}{2}\right) \frac{d\sigma_{q\bar{q}}}{dx_0}\left(\frac{1}{2}, r_\perp\right) \right) \\ &\quad \times \left( \int d^2 r'_\perp K_0\left(\frac{Qr'_\perp}{2}\right) \sigma_{q\bar{q}}\left(\frac{1}{2}, r'_\perp\right) \right)^* \\ &\quad - \frac{e^2 e_f^2 Q^2 N_c}{64\pi} \left| \sum_{h,\bar{h}} \int \frac{d\lambda}{4\pi} \phi^{q\bar{q}} \right|^2 \left( \int d^2 r_\perp K_0\left(\frac{Qr_\perp}{2}\right) \frac{d}{dx_0} Z_\gamma\left(\frac{1}{2}, r_\perp\right) \sigma_{q\bar{q}}\left(\frac{1}{2}, r_\perp\right) \right) \\ &\quad \times \left( \int d^2 r'_\perp K_0\left(\frac{Qr'_\perp}{2}\right) \sigma_{q\bar{q}}\left(\frac{1}{2}, r'_\perp\right) \right)^*. \end{aligned} \quad (112)$$

## E. Summary

In this subsection, we check that the sum of all the contributions to the cross section at NLO accuracy has the expected dependence on the cutoff scales  $\mu$  and  $x_0$ . Let us first remind the reader that the leading-order cross section is finite and does not depend on the dimensional regularization scale

$$\left. \frac{d}{d\mu} \frac{d\sigma_{T,L}^{\gamma^*+N \rightarrow HQ+N}}{dt} \right|_{\text{LO}} = 0. \quad (113)$$

Combining this with the scale dependence from the photon wave function (83), the vector meson wave function (86), and the one-loop correction to the wave function (111), we see that the dependence on  $\mu$  cancels

$$\left. \frac{d}{d\mu} \frac{d\sigma_{T,L}^{\gamma^*+N \rightarrow HQ+N}}{dt} \right|_{\text{LO+NLO}} = 0. \quad (114)$$

$$\begin{aligned} \left. \frac{d}{dx_0} \frac{d\sigma_{T,L}^{\gamma^*+N \rightarrow HQ+N}}{dt} \right|_{\text{LO}} &= \frac{e^2 e_f^2 Q^2 N_c}{128\pi} \left| \sum_{h,\bar{h}} \int \frac{d\lambda}{4\pi} \phi^{q\bar{q}} \right|^2 \left( \int d^2 r_{\perp} K_0 \left( \frac{Q r_{\perp}}{2} \right) \frac{d\sigma_{q\bar{q}}}{x_0} \left( \frac{1}{2}, r_{\perp} \right) \right) \\ &\times \left( \int d^2 r'_{\perp} K_0 \left( \frac{Q r'_{\perp}}{2} \right) \sigma_{q\bar{q}} \left( \frac{1}{2}, r'_{\perp} \right) \right)^* \\ &+ \frac{\alpha_s C_F e^2 e_f^2 Q^2 N_c}{128\pi^4 x_0^2} \left| \sum_{h,\bar{h}} \int \frac{d\lambda}{4\pi} \phi^{q\bar{q}} \right|^2 \left| \int d^2 r_{\perp} K_0 \left( \frac{Q r_{\perp}}{2} \right) \sigma_{q\bar{q}} \left( \frac{1}{2}, r_{\perp} \right) \right|^2. \end{aligned} \quad (115)$$

Both of these  $x_0$  dependences of the leading-order cross section are proportional to  $\alpha_s$ , and are thus at the same level as the NLO contributions. Relevant NLO contributions are the ones from the photon wave function (i.e., quark wave function renormalization), Eq. (83); from the “vertex correction” to the  $q\bar{q}$  component of the meson light-cone wave function in (88); and from the  $q\bar{q}g$  Fock state, Eq. (112). All of these together are needed to make the cross section at NLO independent of the cutoff,  $x_0$ , naturally up to terms of higher order in  $\alpha_s$ :

$$\left. \frac{d}{dx_0} \frac{d\sigma_{T,L}^{\gamma^*+N \rightarrow HQ+N}}{dt} \right|_{\text{LO+NLO}} = 0. \quad (116)$$

This demonstrates that the leading high energy behavior (i.e., dependence on the cutoff  $x_0$ ) can be factorized into B-JIMWLK evolution of the target. Note that our discussion here has been framed in the language of a simple small- $x$  factorization procedure where the amplitudes  $\sigma_{q\bar{q}}$  and  $\sigma_{q\bar{q}g}$  depend on the cutoff  $x_0$ . It is known for other processes (see e.g., Ref. [49]) that this can result in an oversubtraction that can give rise to unphysical behavior for the NLO cross section. We expect this problem to require, just as for inclusive hadron production or inclusive DIS [16,50–52], taking the amplitude to in fact depend on the gluon longitudinal momentum fraction [ $\lambda_G$  in Eq. (46)] in the appropriate way. This modification is formally of higher order in  $\alpha_s$ , and does not affect our conclusion that the leading high energy logarithm can be factorized into B-JIMWLK evolution.

## VII. CONCLUSIONS

In this manuscript, we have studied the light-cone wave function of a heavy quarkonium in the nonrelativistic limit

The overall dependence on  $x_0$  must also cancel, when the B-JIMWLK evolution of the target is taken into account. The leading-order cross section depends on the cutoff  $x_0$  both through the  $x_0$ -dependence of the dipole cross section and of the nonrelativistic wave function [this resulted from the fact that the decay width must be independent of  $x_0$ ; see (65)]:

with a focus on future applications within the dipole model. In Sec. II, we discussed how to combine the dipole model with the nonrelativistic power counting. Within this scope, the main results of this work are the NLO correction to the  $q\bar{q}$ -component, given in Eqs. (41) and (42), and the leading contribution to the  $q\bar{q}g$  component, given in Eq. (44) in momentum space and in Eq. (45) in coordinate space.

We have performed several cross-checks of these results:

- (i) We have checked that the light-cone distribution amplitudes that are obtained from the light-cone wave functions fulfill ERBL equation.
- (ii) We have confirmed that, for the longitudinal case, we recover the results of Ref. [26] for radiative corrections to S-wave quarkonium decay.
- (iii) Finally, we have also checked that using the light-cone wave functions that we found in the longitudinal case to compute exclusive quarkonium production in the limit  $Q \gg m$  we get that all divergences vanish at NLO assuming B-JIMWLK evolution of the target.

The importance of our results lies in a future application to the computation of quarkonium exclusive production at next-to-leading order. This would be the heavy quark analog of the exclusive light meson production calculation of Ref. [19], which is performed in a slightly different formalism but uses the same physical picture of high energy scattering. The heavy quark mass introduces additional complications on one hand but simplifies the description of the meson on the other, due to the nonrelativistic nature of the bound state. For this, the photon light-cone wave function with finite mass effects is needed; this result will appear in the near future, following the massless case [16]. Overall, we believe our work here is a necessary part of a broad effort to increase to next-to-leading order the accuracy of computations in the dipole



picture for a variety of processes. Such improvements are urgently needed to fully confront QCD theory in the saturation regime with experimental data from an active program at the LHC and from a future Electron-Ion Collider.

### ACKNOWLEDGMENTS

We are thankful to G. Beuf, V. Guzey, and H. Mäntysaari for discussions. This work has been supported by the Academy of Finland, Projects No. 267321, No. 303756, and No. 321840 and by the European Research Council (ERC) under the European Union's Horizon 2020 research and innovation programme (Grant No. ERC-2015-CoG-681707). The work of M. A. E. was supported by the Academy of Finland Project No. 297058, by *Ministerio de Ciencia e Innovacion* of Spain under Project No. FPA2017-83814-P and Maria de Maetzu Unit of Excellence MDM-2016-0692, by Xunta de Galicia and FEDER. The content of this article does not reflect the official opinion of the European Union, and responsibility for the information and views expressed therein lies entirely with the authors.

## APPENDIX A: QUARK WAVE FUNCTION RENORMALIZATION IN LIGHT-CONE GAUGE

### 1. Calculation of renormalization coefficient

In this Appendix, we compute the wave function renormalization in light-cone gauge by studying the residue of the quark propagator. In the literature, this has been obtained before [46]. However, we want to obtain a result that is consistent with our regularization scheme. The NLO correction to the quark propagator can be written as

$$\frac{i(\not{p} + m)}{p^2 - m^2 + i\epsilon} \Sigma(p) \frac{i(\not{p} + m)}{p^2 - m^2 + i\epsilon}, \quad (\text{A1})$$

where  $\Sigma(p)$  is the quark self-energy

$$\begin{aligned} \Sigma(p) = & -\frac{ig^2 C_F}{4} \int_{x_0 p^+}^{p^+} \frac{dq^+}{2\pi} \frac{1}{q^+(p^+ - q^+)} \\ & \times \int \frac{d^{D-2} q_\perp}{(2\pi)^{D-2}} \frac{\gamma^\mu (\hat{p}_Q + m) \gamma^\nu d_{\mu\nu}(\hat{q})}{p^- - \hat{q}^- - \hat{p}_Q^- + i\epsilon}. \end{aligned} \quad (\text{A2})$$

Due to symmetry considerations, the self-energy can be decomposed into three different terms,

$$\Sigma(p) = A(p^2)m + B(p^2)(\not{p} - m) + C(p^2)\not{p}, \quad (\text{A3})$$

where  $v$  is a vector orthogonal to  $p$ . Because there is no preferred direction in the transverse plane, we can choose it to be

$$v = \left( p^+, -\frac{p_\perp^2 + p^2}{2p^+}, \mathbf{0} \right). \quad (\text{A4})$$

The three components fulfill the following equations:

$$A(p^2) = \frac{1}{4} \left( \frac{1}{m} \text{Tr}(\Sigma(p)) + \frac{1}{p^2} \text{Tr}(\not{p}\Sigma(p)) \right), \quad (\text{A5})$$

$$B(p^2) = \frac{1}{4p^2} \text{Tr}(\not{p}\Sigma(p)), \quad (\text{A6})$$

$$C(p^2) = \frac{1}{4\bar{n} \cdot p} \left( \text{Tr}(\not{p}\Sigma(p)) - \frac{\bar{n} \cdot p}{p^2} \text{Tr}(\not{p}\Sigma(p)) \right). \quad (\text{A7})$$

It is important to note that, in light-cone gauge, the good and the bad components of the quark field can renormalize differently,

$$\psi_0 = \left( \sqrt{Z_+} \frac{\not{n}\not{p}}{2} + \sqrt{Z_-} \frac{\not{n}\not{p}}{2} \right) \psi. \quad (\text{A8})$$

However, the good component is the only dynamical field and our main interest. Therefore, we are going to identify  $Z$  with  $Z_+$ . Taking this into account, we arrive at the conclusion that in light-cone gauge the procedure to find the wave function renormalization from the quark propagator is to compute

$$\frac{\not{n}\not{p}}{2} \frac{i(\not{p} + m)}{p^2 - m^2 + i\epsilon} \Sigma(p) \frac{i(\not{p} + m)}{p^2 - m^2 + i\epsilon} \frac{\not{n}\not{p}}{2} \quad (\text{A9})$$

and look for the residue of the pole. This procedure gives

$$\delta Z = iB(m^2) + 2im^2A'(m^2) - iC(m^2), \quad (\text{A10})$$

where  $A'(m^2) = \left. \frac{dA(p^2)}{dp^2} \right|_{p^2=m^2}$ .

Let us start with the computation of  $\text{Tr}(\not{n}\Sigma(p))$ ,

$$\begin{aligned} \text{Tr}(\not{n}\Sigma(p)) = & -i(D-2)g^2 C_F \int_{x_0 p^+}^{p^+} \frac{dq^+}{2\pi} \frac{1}{q^+} \\ & \times \int \frac{d^{D-2} q_\perp}{(2\pi)^{D-2}} \frac{1}{p^- - \hat{q}^- - \hat{p}_Q^- + i\epsilon}; \end{aligned} \quad (\text{A11})$$

the denominator can be rewritten as

$$\begin{aligned} p^- - \hat{q}^- - \hat{p}_Q^- & = \frac{-p^+}{2q^+(p^+ - q^+)} \\ & \times \left( \lambda_\perp^2 + \frac{-q^+(p^+ - q^+)(p^2 - m^2) + m^2(q^+)^2}{(p^+)^2} \right), \end{aligned} \quad (\text{A12})$$

where

$$\lambda_{\perp} = \mathbf{q}_{\perp} + \frac{q^+}{p^+} \mathbf{p}_{\perp}. \quad (\text{A13})$$

Using this, we obtain

$$\text{Tr}(\not{p}\Sigma(p)) = \frac{i(D-2)g^2 C_F p^+}{4\pi^2} \Gamma\left(\frac{4-D}{2}\right) \left(\frac{m^2}{4\pi\mu^2}\right)^{\frac{D-4}{2}} \int_{x_0}^1 dx (1-x) \left(x^2 - x(1-x) \frac{p^2 - m^2}{m^2}\right)^{\frac{D-4}{2}}. \quad (\text{A14})$$

However, we are interested in the expansion around  $p^2 \sim m^2$ ,

$$\text{Tr}(\not{p}\Sigma(p)) = \frac{i(D-2)g^2 C_F p^+}{4\pi^2} \Gamma\left(\frac{4-D}{2}\right) \left(\frac{m^2}{4\pi\mu^2}\right)^{\frac{D-4}{2}} \int_{x_0}^1 dx (1-x) x^{D-4} \left(1 - \frac{(D-4)(1-x)(p^2 - m^2)}{2m^2 x}\right) + \mathcal{O}((p^2 - m^2)^2). \quad (\text{A15})$$

Now, we focus on  $\text{Tr}(\Sigma(p))$ ,

$$\begin{aligned} \text{Tr}(\Sigma(p)) &= img^2(D-2)C_F \int_{x_0 p^+}^{p^+} \frac{dq^+}{2\pi} \frac{1}{q^+(p^+ - q^+)} \int \frac{d^{D-2}q_{\perp}}{(2\pi)^{D-2}} \frac{1}{p^- - \hat{q}^- - \hat{p}_{\bar{Q}}^- + i\epsilon} \\ &= -\frac{i(D-2)g^2 C_F m}{4\pi^2} \Gamma\left(\frac{4-D}{2}\right) \left(\frac{m^2}{4\pi\mu^2}\right)^{\frac{D-4}{2}} \int_{x_0}^1 dx x^{D-4} \left(1 - \frac{(D-4)(1-x)(p^2 - m^2)}{2m^2 x}\right) + \mathcal{O}((p^2 - m^2)). \end{aligned} \quad (\text{A16})$$

Finally,

$$\begin{aligned} \text{Tr}(\not{p}\Sigma(p)) &= ig^2 C_F \int_{x_0 p^+}^{p^+} \frac{dq^+}{2\pi} \frac{1}{q^+(p^+ - q^+)} \int \frac{d^{D-2}q_{\perp}}{(2\pi)^{D-2}} \frac{1}{p^- - \hat{q}^- - \hat{p}_{\bar{Q}}^- + i\epsilon} \left(\frac{(p^2 - m^2)(-2p^+ + \frac{6-D}{2}q^+)}{q^+} - (D-4)m^2\right) \\ &= \frac{ig^2 C_F}{4\pi^2} \Gamma\left(\frac{4-D}{2}\right) \left(\frac{m^2}{4\pi\mu^2}\right)^{\frac{D-4}{2}} \\ &\quad \times \int_0^1 dx x^{D-4} \left(1 - \frac{(D-4)(1-x)(p^2 - m^2)}{2m^2 x}\right) \left(\frac{(p^2 - m^2)(2 - \frac{6-D}{2}x)}{x} + (D-4)m^2\right) + \mathcal{O}((p^2 - m^2)^2). \end{aligned} \quad (\text{A17})$$

Using the previous results and expanding around  $D \sim 4$ , we can obtain the terms that are needed to compute  $\delta Z$ ,

$$B(m^2) = -\frac{ig^2 C_F}{8\pi^2}, \quad (\text{A18})$$

$$A'(m^2) = \frac{ig^2 C_F}{8\pi^2 m^2} \left[ \left(\frac{1}{D-4} + \frac{1}{2} \log\left(\frac{m^2}{4\pi\mu^2}\right) + \frac{\gamma_E}{2}\right) (2 \log x_0 + 1) + \log x_0 + \frac{1}{2} + (\log x_0)^2 \right], \quad (\text{A19})$$

$$C(m^2) = -\frac{ig^2 C_F}{8\pi^2} \left(\frac{1}{D-4} + \frac{1}{2} \log\left(\frac{m^2}{4\pi\mu^2}\right) + \frac{\gamma_E}{2} - 2\right). \quad (\text{A20})$$

Finally, we obtain the wave function renormalization

$$\delta Z = -\frac{g^2 C_F}{8\pi^2} \left[ 2 \left(\frac{1}{D-4} + \frac{1}{2} \log\left(\frac{m^2}{4\pi\mu^2}\right) + \frac{\gamma_E}{2}\right) (2 \log x_0 + 1) + 2 \log x_0 + 2(\log x_0)^2 + \frac{1}{D-4} + \frac{1}{2} \log\left(\frac{m^2}{4\pi\mu^2}\right) + \frac{\gamma_E}{2} - 2 \right]. \quad (\text{A21})$$

This result agrees with Ref. [46] if we assume that they have neglected the combination

$$(4 \log x_0 + 3) \frac{\gamma_E}{2} + \frac{3}{2} \log \left( \frac{m^2}{4\pi\mu^2} \right) - 2, \quad (\text{A22})$$

probably due to a difference in the renormalization prescription. Additionally, we have checked that starting from Eq. (3.28) in Ref [46] we also obtain our Eq. (A21).

## 2. Nonrelativistic subtraction

Now, we study the contribution to the wave-function renormalization of nonrelativistic momenta. The motivation is to compute how  $\int_0^1 d\lambda \phi(\lambda, \mathbf{0})$  depends on the cutoff  $x_0$ . To do this, it is useful to understand how to characterize nonrelativistic momenta in light-cone coordinates. The nonrelativistic character is given by the conditions

$$p_\perp \ll m \quad (\text{A23})$$

and

$$p^+ - \frac{m}{\sqrt{2}} \ll m. \quad (\text{A24})$$

The  $-$  component of the momentum, in general, is given by

$$p^- = \frac{p_\perp^2 + m^2}{2p^+} + \frac{p^2 - m^2}{2p^+}. \quad (\text{A25})$$

Using the above conditions, this can be approximated by

$$p^- = \sqrt{2}m - p^+ + \frac{2(p^+ - \frac{m}{\sqrt{2}})^2 + p_\perp^2}{\sqrt{2}m} + \frac{p^2 - m^2}{\sqrt{2}m} + \mathcal{O}\left(\frac{(p^+ - \frac{m}{\sqrt{2}})^3}{m^2}, \frac{p_\perp^3}{m^2}\right). \quad (\text{A26})$$

Using this approximation, we obtain the nonrelativistic component of the self-energy

$$\begin{aligned} \Sigma_{\text{NR}}(p) &= \frac{ig^2 C_F}{2\sqrt{2}m} \int_{x_\Lambda p^+}^{x_0 p^+} \frac{dq^+}{2\pi} \frac{1}{q^+} \\ &\times \int \frac{d^{D-2} q_\perp}{(2\pi)^{D-2}} \frac{\gamma^\mu (\not{p}_Q + m) \gamma^\nu d_{\mu\nu}(\hat{q})}{\frac{q_\perp^2 + 2(q^+)^2}{2q^+} + \frac{p^2 - m^2}{\sqrt{2}m}}. \quad (\text{A27}) \end{aligned}$$

The infrared cutoff  $x_\Lambda$  is such that  $m \gg x_0 p^+ > x_\Lambda p^+ \gg m v$ . It is introduced because we are only interested in the derivative with respect to  $x_0$  and because we want to be sure that no resummation (due to the nonrelativistic nature) is required. In other words, we only care here about the ultraviolet part of the nonrelativistic contribution. Proceeding in a way completely analogous as the computation in the general case, we obtain

$$\begin{aligned} \delta Z_{\text{NR}} &= \frac{g^2 C_F}{4\pi^2} \log \left( \frac{x_0}{x_\Lambda} \right) + \frac{g^2 C_F}{2\pi^2} \left( \frac{1}{D-4} + \frac{1}{2} \log \left( \frac{m^2}{4\pi\mu^2} \right) \right) \\ &+ \frac{\gamma_E}{2} \log \left( \frac{x_0}{x_\Lambda} \right) + \frac{g^2 C_F}{4\pi^2} ((\log x_0)^2 - (\log x_\Lambda)^2). \quad (\text{A28}) \end{aligned}$$

## APPENDIX B: RELATIVISTIC CORRECTION TO THE $q\bar{q}$ -COMPONENT OF THE LIGHT-CONE WAVE FUNCTION

Our starting point is the Bethe-Salpeter equation in the momentum-space form, which we write using a notation similar to the one used in Ref. [45],

$$\begin{aligned} \tilde{\Psi}_{ab}^{BS}(p) &= \int \frac{d^4 q}{(2\pi)^4} [S_F^Q(p)]_{aa'} [K(p-q)]_{a'a'',b''b'} \\ &\times \tilde{\Psi}_{a''b''}^{BS}(q) [S_F^{\bar{Q}}(p)]_{b'b}, \quad (\text{B1}) \end{aligned}$$

where

$$[S_F^Q(p_Q)]_{a'a} = \frac{[\not{p}_Q + m]_{a'a}}{p_Q^2 - m^2 + i\epsilon}, \quad (\text{B2})$$

and

$$[S_F^{\bar{Q}}(p_{\bar{Q}})]_{bb'} = \frac{[\not{p}_{\bar{Q}} - m]_{bb'}}{p_{\bar{Q}}^2 - m^2 + i\epsilon}. \quad (\text{B3})$$

The subindices refer to the spinor structure, and we do not write explicitly the color indices because the quarkonium is assumed to be in a singlet state. Here,  $K$  is the kernel of the Bethe-Salpeter equation, and  $\tilde{\Psi}_{ab}^{BS}(p)$  is the Bethe-Salpeter wave function, which depends on the 4-momentum. Since we are interested in the situation described in Fig. 6, we have to take the limit in which  $p$  is relativistic and  $q$  is nonrelativistic. This limit has two important consequences in Eq. (B1):

- (1)  $K(p-q)$  can be approximated by  $K(p)$ . Then, we end up integrating the wave function on the rhs over all possible nonrelativistic momenta; this is nothing but the nonrelativistic wave function at the origin.
- (2) Since  $p$  is a relativistic momentum (meaning that  $p^2 \gtrsim m^2$ ), we can safely compute  $K(p)$  in perturbation theory, which gives using our conventions

$$[K(p)]_{a'a'',b''b'} = ig^2 C_F \gamma_{a'a''}^\mu \gamma_{b''b'}^\nu \frac{d_{\mu\nu}(p)}{p^2 + i\epsilon}. \quad (\text{B4})$$

Note that Eq. (B1) is written in terms of 4-momenta which can be off shell. To obtain the light-cone wave function, first we rewrite the equation in terms of the on-shell momenta used in light-cone perturbation theory (which we denote by  $\hat{p}$ ) using the relation

$$p^\mu = \hat{p}^\mu + \frac{p^2 - m^2}{2\bar{n}p} \bar{n}^\mu. \quad (\text{B5})$$

Then, we obtain

$$\begin{aligned} \tilde{\Psi}_{ab}^R(p) &= \frac{ig^2 C_F}{2\sqrt{2}M^3 z(1-z)(z-\frac{1}{2})} \sum_{\lambda_1, \lambda_2} \left[ \frac{u(\hat{p}_Q, \lambda_1) \bar{u}(\hat{p}_Q, \lambda_1)}{(\frac{M}{2\sqrt{2}} + p^- - \hat{p}_Q^- + i\epsilon)} \gamma^\mu \tilde{\Psi}^{\text{NR}}(x=0) \gamma^\nu \frac{v(\hat{p}_Q, \lambda_2) \bar{v}(\hat{p}_Q, \lambda_2)}{(\frac{M}{2\sqrt{2}} - p^- - \hat{p}_Q^- + i\epsilon)} \right]_{ab} \\ &\times \left( \frac{d_{\mu\nu}(\hat{p})}{p^- - \hat{p}^- + i\text{sgn}(z-\frac{1}{2})\epsilon} - \frac{2\sqrt{2}\bar{n}_\mu \bar{n}_\nu}{M(z-\frac{1}{2})} \right), \end{aligned} \quad (\text{B6})$$

where we used the superindex  $R$  and  $NR$  to denote respectively the relativistic and nonrelativistic components of the wave function and  $M$  is the mass of the quarkonium state. Integrating the previous formula over  $p^-$  and using that  $M \sim 2m$ , we obtain Eq. (30).

### APPENDIX C: DIRAC ALGEBRA MANIPULATIONS

Here, we report relations that we used in the main text which involve the computation of  $\bar{u}\not{p}u$  in the case in which one of the quarks is nonrelativistic. The general formulas for any momenta are well known in the context of light-cone perturbation theory [16,53]. The starting point is

$$\begin{aligned} \bar{u}(\hat{p}_{RQ}, \lambda_{RQ}) \not{p}^* (\lambda_G) u(mv, \lambda_Q) \\ = \epsilon^{-*}(p_G, \lambda_G) \bar{u}(\hat{p}_{RQ}, \lambda_{RQ}) \not{p} u(mv, \lambda_Q) \\ + \bar{u}(\hat{p}_{RQ}, \lambda_{RQ}) \not{p}_\perp^* (\lambda_G) u(mv, \lambda_Q), \end{aligned} \quad (\text{C1})$$

in which we have used the definition of the light-cone gauge. Now, let us define the good (+) and bad (-) components of the spinor field

$$u_-(\hat{p}, \lambda) = \frac{\not{p}_\perp \not{p}}{2} u(\hat{p}, \lambda), \quad (\text{C2})$$

and

$$u_+(\hat{p}, \lambda) = \frac{\not{p} \not{p}_\perp}{2} u(\hat{p}, \lambda). \quad (\text{C3})$$

In terms of these components, we get

$$\begin{aligned} \bar{u}(\hat{p}_{RQ}, \lambda_{RQ}) \not{p}^* (\lambda_G) u(mv, \lambda_Q) \\ = \epsilon^{-*}(p_G, \lambda_G) \bar{u}_+(\hat{p}_{RQ}, \lambda_{RQ}) \not{p} u_+(mv, \lambda_Q) \\ + \bar{u}_+(\hat{p}_{RQ}, \lambda_{RQ}) \not{p}_\perp^* (\lambda_G) u_-(mv, \lambda_Q) \\ + \bar{u}_-(\hat{p}_{RQ}, \lambda_{RQ}) \not{p}_\perp^* (\lambda_G) u_+(mv, \lambda_Q). \end{aligned} \quad (\text{C4})$$

Now, we use the Dirac equation to obtain

$$u_-(mv, \lambda_Q) = \frac{\not{p}}{\sqrt{2}} u_+(mv, \lambda_Q), \quad (\text{C5})$$

and

$$\bar{u}_-(\hat{p}_{RQ}, \lambda_{RQ}) = \bar{u}_+(\hat{p}_{RQ}, \lambda_{RQ}) (m + \not{p}_\perp) \frac{\not{p}}{2\sqrt{2}mz_{RQ}}. \quad (\text{C6})$$

Using this, we get

$$\begin{aligned} \bar{u}(\hat{p}_{RQ}, \lambda_{RQ}) \not{p}^* (\lambda_G) u(mv, \lambda_Q) &= \epsilon^{-*}(p_G, \lambda_G) \bar{u}_+(\hat{p}_{RQ}, \lambda_{RQ}) \not{p} u_+(mv, \lambda_Q) + \frac{1}{\sqrt{2}} \bar{u}_+(\hat{p}_{RQ}, \lambda_{RQ}) \not{p}_\perp^* (\lambda_G) \not{p} u_+(mv, \lambda_Q) \\ &+ \frac{1}{2\sqrt{2}z_{RQ}} \bar{u}_+(\hat{p}_{RQ}, \lambda_{RQ}) \not{p} \not{p}_\perp^* (\lambda_G) u_+(mv, \lambda_Q) \\ &+ \frac{1}{2\sqrt{2}mz_{RQ}} \bar{u}_+(\hat{p}_{RQ}, \lambda_{RQ}) \not{p}_\perp \not{p} \not{p}_\perp^* (\lambda_G) u_+(mv, \lambda_Q). \end{aligned} \quad (\text{C7})$$

Now, using the property  $p^\mu \epsilon_\mu(p) = 0$ , we obtain

$$\begin{aligned} \bar{u}(\hat{p}_{RQ}, \lambda_{RQ}) \not{p}^* (\lambda_G) u(mv, \lambda_Q) &= \frac{(\mathbf{q}_\perp \cdot \mathbf{e}_\perp^*(\lambda_G))(z_G + 2z_{RQ})}{2\sqrt{2}mz_G z_{RQ}} \bar{u}_+(\hat{p}_{RQ}, \lambda_{RQ}) \not{p} u_+(mv, \lambda_Q) \\ &+ \frac{2z_{RQ} - 1}{2\sqrt{2}z_{RQ}} \bar{u}_+(\hat{p}_{RQ}, \lambda_{RQ}) \not{p}_\perp^* (\lambda_G) \not{p} u_+(mv, \lambda_Q) \\ &- \frac{1}{4\sqrt{2}mz_{RQ}} \bar{u}_+(\hat{p}_{RQ}, \lambda_{RQ}) \not{p}_\perp [\not{p}_\perp, \not{p}_\perp^*(\lambda_G)] u_+(mv, \lambda_Q). \end{aligned} \quad (\text{C8})$$

Note that  $\bar{u}u = \bar{u}u_+$  and  $\bar{u}u_- = 0$ . Therefore, we can safely remove the subindex + on the rhs.

## APPENDIX D: USEFUL FOURIER TRANSFORMS

In this Appendix, we report several equations which are useful to transform our results from position to momentum space. Some of them are taken from Ref. [54]

$$D^{(\kappa)}(r_{\perp}, m) = \int \frac{d^{D-2}p_{\perp}}{(2\pi)^{D-2}} \frac{e^{i\mathbf{p}_{\perp}\mathbf{r}_{\perp}}}{(p_{\perp}^2 + m^2)^{\kappa+1}} = \frac{(m/r_{\perp})^{\frac{D-4-2\kappa}{2}}}{(2\pi)^{\frac{D-2}{2}} 2^{\kappa} \Gamma(\kappa+1)} K_{\frac{D-4-2\kappa}{2}}(mr_{\perp}). \quad (\text{D1})$$

The previous formula can be used to derive

$$I_1^{(\kappa)}(r_{\perp}, m) = \int \frac{d^{D-2}p_{\perp}}{(2\pi)^{D-2}} \frac{e^{i\mathbf{p}_{\perp}\mathbf{r}_{\perp}} (\mathbf{p}_{\perp}\mathbf{r}_{\perp})}{(p_{\perp}^2 + m^2)^{\kappa+1}} = \frac{ir_{\perp}^2 (m/r_{\perp})^{\frac{D-2-2\kappa}{2}}}{(2\pi)^{\frac{D-2}{2}} 2^{\kappa} \Gamma(\kappa+1)} K_{\frac{D-2-2\kappa}{2}}(mr_{\perp}), \quad (\text{D2})$$

and

$$I_2^{(\kappa)}(r_{\perp}, m) = \int \frac{d^{D-2}p_{\perp}}{(2\pi)^{D-2}} \frac{e^{i\mathbf{p}_{\perp}\mathbf{r}_{\perp}} (\mathbf{p}_{\perp}\mathbf{r}_{\perp})^2}{(p_{\perp}^2 + m^2)^{\kappa+1}} = \frac{(m/r_{\perp})^{\frac{D-4-2\kappa}{2}} mr_{\perp}}{(2\pi)^{\frac{D-2}{2}} 2^{\kappa} \Gamma(\kappa+1)} (K_{\frac{D-2-2\kappa}{2}}(mr_{\perp}) - mx K_{\frac{D-2\kappa}{2}}(mr_{\perp})). \quad (\text{D3})$$

At several points, we also need the expressions for  $K_{\frac{D-2}{2}}(mr_{\perp})$  in the limit  $mr_{\perp} \ll 1$ . This can be obtained using Eq. (D2) and the technique of integration by regions [55]

$$K_{\frac{D-2}{2}}(mr_{\perp}) \sim \frac{1}{mr_{\perp}} \left( \frac{2}{mr_{\perp}} \right)^{\frac{D-4}{2}} \Gamma\left(\frac{D-2}{2}\right). \quad (\text{D4})$$

## APPENDIX E: INTERMEDIATE RESULTS FOR THE EVALUATION OF FIG. 6

Fourier transforming the contribution in Eq. (30) from momentum to coordinate space (see Appendix D), we can write the contribution as

$$\begin{aligned} \{\Psi_{HQ}^{q\bar{q}}\}_{\lambda_1\lambda_2}^i(z, r_{\perp})|_{\text{Fig.6}} &= \frac{g^2 C_F \sqrt{z(1-z)}}{2\pi m^2 (z - \frac{1}{2})^2} \left[ K_0(\tau) - \frac{(z + \frac{1}{2})(\frac{3}{2} - z)}{2z(1-z)} \left( \theta\left(z - \frac{1}{2}\right)(1-z) + \theta\left(\frac{1}{2} - z\right)z \right) \left( K_0(\tau) - \frac{\tau}{2} K_1(\tau) \right) \right] \\ &\times \sum_{\lambda'_1, \lambda'_2} [\bar{u}(\hat{p}_Q, \lambda_1) \not{\epsilon} u(mv, \lambda'_1)] \int \frac{d\lambda}{4\pi} \phi_{q\bar{q}}^i(\lambda, \mathbf{0}) [\bar{v}(mv, \lambda'_2) \not{\epsilon} v(\hat{p}_Q, \lambda_2)] \\ &+ \frac{g^2 C_F}{32\pi m^2 \sqrt{z(1-z)}} \left( \theta\left(z - \frac{1}{2}\right)(1-z) + \theta\left(\frac{1}{2} - z\right)z \right) K_0(\tau) \\ &\times \sum_{\lambda'_1, \lambda'_2} [\bar{u}(\hat{p}_Q, \lambda_1) \not{\epsilon} [\gamma_{\perp}^i, \gamma_{\perp}^j] u(mv, \lambda'_1)] \int \frac{d\lambda}{4\pi} \phi_{q\bar{q}}^i(\lambda, \mathbf{0}) [\bar{v}(mv, \lambda'_2) [\gamma_{\perp}^j, \gamma_{\perp}^i] \not{\epsilon} v(\hat{p}_Q, \lambda_2)] \\ &- \frac{g^2 C_F (z - \frac{1}{2})}{16\pi m r_{\perp} \sqrt{z(1-z)}} \left( \theta\left(z - \frac{1}{2}\right)(1-z) + \theta\left(\frac{1}{2} - z\right)z \right) K_1(\tau) \\ &\times \sum_{\lambda'_1, \lambda'_2} [\bar{u}(\hat{p}_Q, \lambda_1) \not{\epsilon} [\not{r}_{\perp}, \gamma_{\perp}^i] u(mv, \lambda'_1)] \int \frac{d\lambda}{4\pi} \phi_{q\bar{q}}^i(\lambda, \mathbf{0}) [\bar{v}(mv, \lambda'_2) [\gamma_{\perp}^i, \not{r}_{\perp}] \not{\epsilon} v(\hat{p}_Q, \lambda_2)] \\ &+ \frac{i g^2 C_F}{4\pi m \sqrt{z(1-z)}} \left( \theta\left(z - \frac{1}{2}\right)(1-z) + \theta\left(\frac{1}{2} - z\right)z \right) K_0(\tau) \\ &\times \sum_{\lambda'_1, \lambda'_2} \left[ \left( z + \frac{1}{2} \right) [\bar{u}(\hat{p}_Q, \lambda_1) \not{\epsilon} u(mv, \lambda'_1)] \int \frac{d\lambda}{4\pi} \phi_{q\bar{q}}^i(\lambda, \mathbf{0}) [\bar{v}(mv, \lambda'_2) \not{r}_{\perp} \not{\epsilon} v(\hat{p}_Q, \lambda_2)] \right] \end{aligned}$$

$$\begin{aligned}
& + \frac{(z - \frac{1}{2})}{2} [\bar{u}(\hat{p}_Q, \lambda_1) \not{\epsilon}_\perp \not{\gamma}_\perp^i u(mv, \lambda'_1)] \int \frac{d\lambda}{4\pi} \phi_{q\bar{q}}^i(\lambda, \mathbf{0}) [\bar{v}(mv, \lambda'_2) \not{\gamma}_\perp^i \not{v}(\hat{p}_{\bar{Q}}, \lambda_2)] \\
& - \frac{ig^2 C_F}{4\pi m \sqrt{z(1-z)}} \left( \theta \left( z - \frac{1}{2} \right) (1-z) + \theta \left( \frac{1}{2} - z \right) z \right) K_0(\tau) \\
& \times \sum_{\lambda'_1, \lambda'_2} \left[ \left( \frac{3}{2} - z \right) [\bar{u}(\hat{p}_Q, \lambda_1) \not{\epsilon}_\perp \not{u}(mv, \lambda'_1)] \int \frac{d\lambda}{4\pi} \phi_{q\bar{q}}^i(\lambda, \mathbf{0}) [\bar{v}(mv, \lambda'_2) \not{v}(\hat{p}_{\bar{Q}}, \lambda_2)] \right. \\
& \left. - \frac{(z - \frac{1}{2})}{2} [\bar{u}(\hat{p}_Q, \lambda_1) \gamma_\perp^i \not{u}(mv, \lambda'_1)] \int \frac{d\lambda}{4\pi} \phi_{q\bar{q}}^i(\lambda, \mathbf{0}) [\bar{v}(mv, \lambda'_2) \not{\epsilon}_\perp^i \not{v}(\hat{p}_{\bar{Q}}, \lambda_2)] \right] \\
& + \frac{g^2 C_F (z - \frac{1}{2}) r_\perp}{4\pi m \sqrt{z(1-z)}} \left( \theta \left( z - \frac{1}{2} \right) (1-z) + \theta \left( \frac{1}{2} - z \right) z \right) K_1(\tau) \\
& \times \sum_{\lambda'_1, \lambda'_2} [\bar{u}(\hat{p}_Q, \lambda_1) \gamma_\perp^i \not{u}(mv, \lambda'_1)] \int \frac{d\lambda}{4\pi} \phi_{q\bar{q}}^i(\lambda, \mathbf{0}) [\bar{v}(mv, \lambda'_2) \gamma_\perp^i \not{v}(\hat{p}_{\bar{Q}}, \lambda_2)], \tag{E1}
\end{aligned}$$

where  $\tau = 2m(z - \frac{1}{2})r_\perp$ .

Using the Dirac equation satisfied by the spinors and the tabulated spinor matrix elements, we can express the matrix elements (32) and (33) in terms of the helicities of the quark and antiquark as

$$\begin{aligned}
\bar{u}(\hat{p}_Q, \lambda_1) \not{\epsilon}_\perp u(mv, \lambda'_1) & = \frac{p_\perp^i \epsilon_\perp^j}{\sqrt{2z(z - \frac{1}{2})}} \left[ \left( z + \frac{1}{2} \right) \delta^{ij} - i \left( z - \frac{1}{2} \right) (-1)^{\frac{1-\lambda_1}{2}} \epsilon^{ij} \right] \delta_{\lambda_1, \lambda'_1} \\
& - \frac{\sqrt{2}m(z - \frac{1}{2})(-1)^{\frac{1-\lambda_1}{2}} \delta_{\lambda_1, -\lambda'_1}}{\sqrt{z}} \epsilon_\perp^i (\delta^{i1} - i(-1)^{\frac{1-\lambda_1}{2}} \delta^{i2}), \tag{E2}
\end{aligned}$$

$$\begin{aligned}
\bar{v}(mv, \lambda'_2) \not{v}(\hat{p}_{\bar{Q}}, \lambda_2) & = \frac{p_\perp^i \epsilon_\perp^j}{\sqrt{2(1-z)(z - \frac{1}{2})}} \left[ \left( \frac{3}{2} - z \right) \delta^{ij} + i \left( z - \frac{1}{2} \right) (-1)^{\frac{1-\lambda_2}{2}} \epsilon^{ij} \right] \delta_{\lambda_2, \lambda'_2} \\
& + \frac{\sqrt{2}m(z - \frac{1}{2})(-1)^{\frac{1-\lambda_2}{2}} \delta_{\lambda_2, -\lambda'_2}}{\sqrt{1-z}} \epsilon_\perp^i (\delta^{i1} - i(-1)^{\frac{1-\lambda_2}{2}} \delta^{i2}). \tag{E3}
\end{aligned}$$

Note that here the polarization vector  $\epsilon_\perp$  is that of the transversely polarized gluon exchanged in Fig. 6; the longitudinal polarization for the exchanged gluon is treated as a separate term in Eq. (30).

Using the matrix elements such as (E2) and (E3) in (E1), we can write it in the form

$$\begin{aligned}
\{\Psi_{HQ}^{q\bar{q}}\}_{\lambda_1 \lambda_2}^i(z, r_\perp)|_{\text{Fig.6}} & = \frac{2g^2 C_F z(1-z)}{\pi(z - \frac{1}{2})^2} \left[ K_0(\tau) - \frac{(z + \frac{1}{2})(\frac{3}{2} - z)}{2z(1-z)} \left( \theta \left( z - \frac{1}{2} \right) (1-z) + \theta \left( \frac{1}{2} - z \right) z \right) \left( K_0(\tau) - \frac{\tau}{2} K_1(\tau) \right) \right] \\
& \times \int \frac{d\lambda}{4\pi} \{\phi_{q\bar{q}}^i(\lambda, \mathbf{0})\}_{\lambda_1, \lambda_2} - \frac{g^2 C_F}{\pi} \left( \theta \left( z - \frac{1}{2} \right) (1-z) + \theta \left( \frac{1}{2} - z \right) z \right) K_0(\tau) (-1)^{\frac{2-\lambda_1-\lambda_2}{2}} \\
& \times \left\{ \int \frac{d\lambda}{4\pi} \phi_{q\bar{q}}^i(\lambda, \mathbf{0}) \right\}_{\lambda_1, \lambda_2} + \frac{g^2 C_F (z - \frac{1}{2}) m r_\perp}{\pi} \left( \theta \left( z - \frac{1}{2} \right) (1-z) + \theta \left( \frac{1}{2} - z \right) z \right) K_1(\tau) \\
& \times (-1)^{\frac{2-\lambda_1-\lambda_2}{2}} \left\{ \int \frac{d\lambda}{4\pi} \phi_{q\bar{q}}^i(\lambda, \mathbf{0}) \right\}_{\lambda_1, \lambda_2} + \frac{ig^2 C_F m}{4\pi} \left( \theta \left( z - \frac{1}{2} \right) (1-z) + \theta \left( \frac{1}{2} - z \right) z \right) K_0(\tau) \\
& \times \left[ -4 \left( z + \frac{1}{2} \right) \left\{ \int \frac{d\lambda}{4\pi} \phi_{q\bar{q}}^i(\lambda, \mathbf{0}) \right\}_{\lambda_1, -\lambda_2} r_\perp^j ((-1)^{\frac{1-\lambda_2}{2}} \delta^{j1} - i\delta^{j2}) + 8 \frac{(z - \frac{1}{2})}{2} (-1)^{\frac{2-\lambda_1-\lambda_2}{2}} \right. \\
& \left. \times \left\{ \int \frac{d\lambda}{4\pi} \phi_{q\bar{q}}^i(\lambda, \mathbf{0}) \right\}_{\lambda_1, -\lambda_2} r_\perp^j ((-1)^{\frac{1-\lambda_2}{2}} \delta^{j1} - i\delta^{j2}) \right]
\end{aligned}$$



$$\begin{aligned}
& -\frac{ig^2 C_F m}{4\pi} \left( \theta \left( z - \frac{1}{2} \right) (1-z) + \theta \left( \frac{1}{2} - z \right) z \right) K_0(\tau) \\
& \times \left[ -4 \left( \frac{3}{2} - z \right) \left\{ \int \frac{d\lambda}{4\pi} \phi_{q\bar{q}}^i(\lambda, \mathbf{0}) \right\}_{-\lambda_1, \lambda_2} r_{\perp}^j \left( (-1)^{\frac{1-\lambda_1}{2}} \delta^{j1} - i\delta^{j2} \right) \right. \\
& \left. - 8 \frac{\left( z - \frac{1}{2} \right)}{2} (-1)^{\frac{2-\lambda_1-\lambda_2}{2}} \left\{ \int \frac{d\lambda}{4\pi} \phi_{q\bar{q}}^i(\lambda, \mathbf{0}) \right\}_{-\lambda_1, \lambda_2} r_{\perp}^j \left( \left( (-1)^{\frac{1-\lambda_1}{2}} \delta^{j1} - i\delta^{j2} \right) \right) \right] \\
& + \frac{g^2 C_F \left( z - \frac{1}{2} \right) m r_{\perp}}{\pi} \left( \theta \left( z - \frac{1}{2} \right) (1-z) + \theta \left( \frac{1}{2} - z \right) z \right) K_1(\tau) \\
& \times \left( (-1)^{\frac{2-\lambda_1-\lambda_2}{2}} - 1 \right) \left\{ \int \frac{d\lambda}{4\pi} \phi_{q\bar{q}}^i(\lambda, \mathbf{0}) \right\}_{-\lambda_1, -\lambda_2}, \tag{E4}
\end{aligned}$$

which is further simplified to get the result (34).

- 
- [1] A. J. Baltz, The physics of ultraperipheral collisions at the LHC, *Phys. Rep.* **458**, 1 (2008).
- [2] A. Accardi *et al.*, Electron Ion Collider: The next QCD frontier, *Eur. Phys. J. A* **52**, 268 (2016).
- [3] A. Caldwell and H. Kowalski, Investigating the gluonic structure of nuclei via  $J/\psi$  scattering, *Phys. Rev. C* **81**, 025203 (2010).
- [4] T. Lappi and H. Mäntysaari, Incoherent diffractive  $J/\psi$ -production in high energy nuclear DIS, *Phys. Rev. C* **83**, 065202 (2011).
- [5] H. Mäntysaari and B. Schenke, Evidence of Strong Proton Shape Fluctuations from Incoherent Diffraction, *Phys. Rev. Lett.* **117**, 052301 (2016).
- [6] H. Mäntysaari and B. Schenke, Probing subnucleon scale fluctuations in ultraperipheral heavy ion collisions, *Phys. Lett. B* **772**, 832 (2017).
- [7] H. Mäntysaari and P. Zurita, In depth analysis of the combined HERA data in the dipole models with and without saturation, *Phys. Rev. D* **98**, 036002 (2018).
- [8] H. Mäntysaari and B. Schenke, Confronting impact parameter dependent JIMWLK evolution with HERA data, *Phys. Rev. D* **98**, 034013 (2018).
- [9] N. N. Nikolaev and B. G. Zakharov, Color transparency and scaling properties of nuclear shadowing in deep inelastic scattering, *Z. Phys. C* **49**, 607 (1991).
- [10] N. Nikolaev and B. G. Zakharov, Pomeron structure function and diffraction dissociation of virtual photons in perturbative QCD, *Z. Phys. C* **53**, 331 (1992).
- [11] A. H. Mueller, Soft gluons in the infinite momentum wave function and the BFKL pomeron, *Nucl. Phys.* **B415**, 373 (1994).
- [12] A. H. Mueller and B. Patel, Single and double BFKL pomeron exchange and a dipole picture of high-energy hard processes, *Nucl. Phys.* **B425**, 471 (1994).
- [13] A. H. Mueller, Unitarity and the BFKL pomeron, *Nucl. Phys.* **B437**, 107 (1995).
- [14] J. D. Bjorken, J. B. Kogut, and D. E. Soper, Quantum electrodynamics at infinite momentum: Scattering from an external field, *Phys. Rev. D* **3**, 1382 (1971).
- [15] G. Beuf, Dipole factorization for DIS at NLO: Loop correction to the photon to quark-antiquark light-front wave-functions, *Phys. Rev. D* **94**, 054016 (2016).
- [16] G. Beuf, Dipole factorization for DIS at NLO: Combining the  $q\bar{q}$  and  $q\bar{q}g$  contributions, *Phys. Rev. D* **96**, 074033 (2017).
- [17] H. Hänninen, T. Lappi, and R. Paatelainen, One-loop corrections to light cone wave functions: The dipole picture DIS cross section, *Ann. Phys. (Amsterdam)* **393**, 358 (2018).
- [18] R. Boussarie, A. V. Grabovsky, L. Szymanowski, and S. Wallon, On the one loop  $\gamma^{(*)} \rightarrow q\bar{q}$  impact factor and the exclusive diffractive cross sections for the production of two or three jets, *J. High Energy Phys.* **11** (2016) 149.
- [19] R. Boussarie, A. V. Grabovsky, D. Yu. Ivanov, L. Szymanowski, and S. Wallon, Next-to-Leading Order Computation of Exclusive Diffractive Light Vector Meson Production in a Saturation Framework, *Phys. Rev. Lett.* **119**, 072002 (2017).
- [20] S. J. Brodsky, L. Frankfurt, J. F. Gunion, A. H. Mueller, and M. Strikman, Diffractive lepton production of vector mesons in QCD, *Phys. Rev. D* **50**, 3134 (1994).
- [21] H. Kowalski, L. Motyka, and G. Watt, Exclusive diffractive processes at HERA within the dipole picture, *Phys. Rev. D* **74**, 074016 (2006).
- [22] G. T. Bodwin, E. Braaten, and G. P. Lepage, Rigorous QCD analysis of inclusive annihilation and production of heavy quarkonium, *Phys. Rev. D* **51**, 1125 (1995); Erratum, *Phys. Rev. D* **55**, 5853(E) (1997).
- [23] N. Brambilla *et al.*, Heavy quarkonium: Progress, puzzles, and opportunities, *Eur. Phys. J. C* **71**, 1534 (2011).
- [24] M. G. Ryskin, Diffractive  $J/\psi$  electroproduction in LLA QCD, *Z. Phys. C* **57**, 89 (1993).

- [25] P. Hoodbhoy, Wave function corrections and off forward gluon distributions in diffractive  $J/\psi$  electroproduction, *Phys. Rev. D* **56**, 388 (1997).
- [26] R. Barbieri, R. Gatto, R. Kogerler, and Z. Kunszt, Meson hyperfine splittings and leptonic decays, *Phys. Lett.* **57B**, 455 (1975).
- [27] A. V. Efremov and A. V. Radyushkin, Factorization and asymptotical behavior of pion form-factor in QCD, *Phys. Lett.* **94B**, 245 (1980).
- [28] G. P. Lepage and S. J. Brodsky, Exclusive processes in perturbative quantum chromodynamics, *Phys. Rev. D* **22**, 2157 (1980).
- [29] Y. Jia and D. Yang, Refactorizing NRQCD short-distance coefficients in exclusive quarkonium production, *Nucl. Phys.* **B814**, 217 (2009).
- [30] J. P. Ma and Z. G. Si, NRQCD factorization for twist-2 light-cone wave-functions of charmonia, *Phys. Lett. B* **647**, 419 (2007).
- [31] G. Bell and T. Feldmann, Modelling light-cone distribution amplitudes from non-relativistic bound states, *J. High Energy Phys.* **04** (2008) 061.
- [32] I. Balitsky, Operator expansion for high-energy scattering, *Nucl. Phys.* **B463**, 99 (1996).
- [33] Y. V. Kovchegov, Small- $x$  F2 structure function of a nucleus including multiple pomeron exchanges, *Phys. Rev. D* **60**, 034008 (1999).
- [34] Y. V. Kovchegov, Unitarization of the BFKL pomeron on a nucleus, *Phys. Rev. D* **61**, 074018 (2000).
- [35] E. Ferreira, E. Iancu, A. Leonidov, and L. McLerran, Nonlinear gluon evolution in the color glass condensate. 2., *Nucl. Phys.* **A703**, 489 (2002).
- [36] E. Iancu, A. Leonidov, and L. D. McLerran, Nonlinear gluon evolution in the color glass condensate. 1., *Nucl. Phys.* **A692**, 583 (2001).
- [37] E. Iancu, A. Leonidov, and L. D. McLerran, The renormalization group equation for the color glass condensate, *Phys. Lett. B* **510**, 133 (2001).
- [38] J. Jalilian-Marian, A. Kovner, and H. Weigert, The Wilson renormalization group for low  $x$  physics: Gluon evolution at finite parton density, *Phys. Rev. D* **59**, 014015 (1998).
- [39] J. Jalilian-Marian, A. Kovner, A. Leonidov, and H. Weigert, The Wilson renormalization group for low  $x$  physics: Towards the high density regime, *Phys. Rev. D* **59**, 014014 (1998).
- [40] J. Jalilian-Marian, A. Kovner, A. Leonidov, and H. Weigert, The BFKL equation from the Wilson renormalization group, *Nucl. Phys.* **B504**, 415 (1997).
- [41] A. Kovner, J. G. Milhano, and H. Weigert, Relating different approaches to nonlinear QCD evolution at finite gluon density, *Phys. Rev. D* **62**, 114005 (2000).
- [42] H. Weigert, Unitarity at small Bjorken  $x$ , *Nucl. Phys.* **A703**, 823 (2002).
- [43] T. Altinoluk, R. Boussarie, and P. Kotko, Interplay of the CGC and TMD frameworks to all orders in kinematic twist, *J. High Energy Phys.* **05** (2019) 156.
- [44] V. L. Chernyak and A. R. Zhitnitsky, Asymptotic behavior of exclusive processes in QCD, *Phys. Rep.* **112**, 173 (1984).
- [45] G. T. Bodwin, D. Kang, and J. Lee, Reconciling the light-cone and NRQCD approaches to calculating  $e^+e^- \rightarrow J/\psi + \eta_c$ , *Phys. Rev. D* **74**, 114028 (2006).
- [46] D. Mustaki, S. Pinsky, J. Shigemitsu, and K. Wilson, Perturbative renormalization of null plane QED, *Phys. Rev. D* **43**, 3411 (1991).
- [47] M. Ding, F. Gao, L. Chang, Y.-X. Liu, and C. D. Roberts, Leading-twist parton distribution amplitudes of S-wave heavy-quarkonia, *Phys. Lett. B* **753**, 330 (2016).
- [48] L. Frankfurt, W. Koepf, and M. Strikman, Diffractive heavy quarkonium photoproduction and electroproduction in QCD, *Phys. Rev. D* **57**, 512 (1998).
- [49] B. Ducloué, T. Lappi, and Y. Zhu, Single inclusive forward hadron production at next-to-leading order, *Phys. Rev. D* **93**, 114016 (2016).
- [50] E. Iancu, A. H. Mueller, and D. N. Triantafyllopoulos, CGC factorization for forward particle production in proton-nucleus collisions at next-to-leading order, *J. High Energy Phys.* **12** (2016) 041.
- [51] B. Ducloué, T. Lappi, and Y. Zhu, Implementation of NLO high energy factorization in single inclusive forward hadron production, *Phys. Rev. D* **95**, 114007 (2017).
- [52] B. Ducloué, H. Hänninen, T. Lappi, and Y. Zhu, Deep inelastic scattering in the dipole picture at next-to-leading order, *Phys. Rev. D* **96**, 094017 (2017).
- [53] T. Lappi and R. Paatelainen, The one loop gluon emission light cone wave function, *Ann. Phys. (Amsterdam)* **379**, 34 (2017).
- [54] S. Groote and J. G. Körner, Coordinate space calculation of two- and three-loop sunrise-type diagrams, elliptic functions and truncated Bessel integral identities, *Nucl. Phys.* **B938**, 416 (2019).
- [55] M. Beneke and V. A. Smirnov, Asymptotic expansion of Feynman integrals near threshold, *Nucl. Phys.* **B522**, 321 (1998).