

**This is an electronic reprint of the original article.
This reprint *may differ* from the original in pagination and typographic detail.**

Author(s): Perros, A.; Bosund, M.; Sajavaara, Timo; Laitinen, Mikko; Sainiemi, L.; Huhtio, T.; Lipsanen, H.

Title: Plasma etch characteristics of aluminum nitride mask layers grown by low-temperature plasma enhanced atomic layer deposition in SF₆ based plasmas

Year: 2012

Version:

Please cite the original version:

Perros, A., Bosund, M., Sajavaara, T., Laitinen, M., Sainiemi, L., Huhtio, T., & Lipsanen, H. (2012). Plasma etch characteristics of aluminum nitride mask layers grown by low-temperature plasma enhanced atomic layer deposition in SF₆ based plasmas. *Journal of Vacuum Science & Technology A: Vacuum, Surfaces, and Films*, 30(1), 11504.
<https://doi.org/10.1116/1.3664306>

All material supplied via JYX is protected by copyright and other intellectual property rights, and duplication or sale of all or part of any of the repository collections is not permitted, except that material may be duplicated by you for your research use or educational purposes in electronic or print form. You must obtain permission for any other use. Electronic or print copies may not be offered, whether for sale or otherwise to anyone who is not an authorised user.

Plasma etch characteristics of aluminum nitride mask layers grown by low-temperature plasma enhanced atomic layer deposition in SF₆ based plasmas

Alexander Perros, Markus Bosund, Timo Sajavaara, Mikko Laitinen, Lauri Sainiemi, Teppo Huhtio, and Harri Lipsanen

Citation: *Journal of Vacuum Science & Technology A* **30**, 011504 (2012); doi: 10.1116/1.3664306

View online: <http://dx.doi.org/10.1116/1.3664306>

View Table of Contents: <http://scitation.aip.org/content/avs/journal/jvsta/30/1?ver=pdfcov>

Published by the AVS: Science & Technology of Materials, Interfaces, and Processing

Articles you may be interested in

[Fabrication of AlN/BN bishell hollow nanofibers by electrospinning and atomic layer deposition](#)

APL Mater. **2**, 096109 (2014); 10.1063/1.4894782

[Optical characteristics of nanocrystalline Al_xGa_{1-x}N thin films deposited by hollow cathode plasma-assisted atomic layer deposition](#)

J. Vac. Sci. Technol. A **32**, 031508 (2014); 10.1116/1.4870381

[Bipolar resistive switching characteristics of low temperature grown ZnO thin films by plasma-enhanced atomic layer deposition](#)

Appl. Phys. Lett. **102**, 012113 (2013); 10.1063/1.4774400



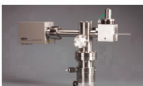
[Effect of in situ hydrogen plasma treatment on zinc oxide grown using low temperature atomic layer deposition](#)

J. Vac. Sci. Technol. A **31**, 01A124 (2013); 10.1116/1.4767813

[Crystal AlN deposited at low temperature by magnetic field enhanced plasma assisted atomic layer deposition](#)

J. Vac. Sci. Technol. A **31**, 01A114 (2013); 10.1116/1.4764112


Instruments for Advanced Science

<p>Contact Hiden Analytical for further details: W www.HidenAnalytical.com E info@hiden.co.uk</p> <p>CLICK TO VIEW our product catalogue</p>	 <p>Gas Analysis</p> <ul style="list-style-type: none"> › dynamic measurement of reaction gas streams › catalysis and thermal analysis › molecular beam studies › dissolved species probes › fermentation, environmental and ecological studies 	 <p>Surface Science</p> <ul style="list-style-type: none"> › UHV TPD › SIMS › end point detection in ion beam etch › elemental imaging - surface mapping 	 <p>Plasma Diagnostics</p> <ul style="list-style-type: none"> › plasma source characterization › etch and deposition process reaction › kinetic studies › analysis of neutral and radical species 	 <p>Vacuum Analysis</p> <ul style="list-style-type: none"> › partial pressure measurement and control of process gases › reactive sputter process control › vacuum diagnostics › vacuum coating process monitoring
---	--	--	--	--

Plasma etch characteristics of aluminum nitride mask layers grown by low-temperature plasma enhanced atomic layer deposition in SF₆ based plasmas

Alexander Perros^{a)} and Markus Bosund

Department of Micro- and Nanosciences, Aalto University School of Electrical Engineering, P.O. Box 13500, FI-00076 Aalto, Finland

Timo Sajavaara and Mikko Laitinen

Department of Physics, University of Jyväskylä, P.O. Box 35, 40014, Jyväskylä, Finland

Lauri Sainiemi, Teppo Huhtio, and Harri Lipsanen

Department of Micro and Nanosciences, School of Electrical Engineering, Aalto University, P.O. Box 13500, FI-00076, Aalto, Finland

(Received 6 April 2011; accepted 30 September 2011; published 5 December 2011)

The plasma etch characteristics of aluminum nitride (AlN) deposited by low-temperature, 200 °C, plasma enhanced atomic layer deposition (PEALD) was investigated for reactive ion etch (RIE) and inductively coupled plasma-reactive ion etch (ICP-RIE) systems using various mixtures of SF₆ and O₂ under different etch conditions. During RIE, the film exhibits good mask properties with etch rates below 10 nm/min. For ICP-RIE processes, the film exhibits exceptionally low etch rates in the subnanometer region with lower platen power. The AlN film's removal occurred through physical mechanisms; consequently, rf power and chamber pressure were the most significant parameters in PEALD AlN film removal because the film was inert to the SF_x⁺ and O⁺ chemistries. The etch experiments showed the film to be a resilient masking material. This makes it an attractive candidate for use as an etch mask in demanding SF₆ based plasma etch applications, such as through-wafer etching, or when oxide films are not suitable. © 2012 American Vacuum Society. [DOI: 10.1116/1.3664306]

I. INTRODUCTION

Aluminum nitride (AlN) has attracted great attention because of its attractive properties, including excellent chemical and thermal stability, a low thermal expansion coefficient close to that of silicon, a high thermal conductivity, and a wide band gap. AlN also has been studied as a non-toxic alternative to beryllium oxide¹ and substitute to alumina for high temperature electronics.² Sputtering and chemical vapor deposition (CVD) have been the traditional methods of deposition. Plasma enhanced atomic layer deposition (PEALD), which uses a plasma source to form radicals, expands the selection of atomic layer deposition (ALD) films, facilitates the deposition of nitride films, and can support lower deposition temperatures, higher deposition rates, and a higher degree of crystallization than the thermal ALD process.³⁻⁵ AlN deposited by PEALD, as opposed to sputtered or CVD films, is well suited for demanding applications with sensitive substrates that require an extremely conformal pinhole free film with precise thickness control and large area scale up.⁶

The use of sputtered AlN as an etch mask for SiO₂ during inductively coupled plasma-reactive ion etch (ICP-RIE) for a multitude of fluorine chemistries has already been studied.⁷ The material was shown to have a high selectivity to glass and a low etch rate. Sputtered AlN has also been investigated by Senensky and Pisano as a nonmetallic alternative masking material for the plasma etching of silicon carbide in SF₆/O₂ chemistries.⁸ In this article, the etch characteristics

of PEALD AlN deposited at 200 °C for plasma etching processes using SF₆ based chemistries are presented. Since aluminum has poor volatility in fluorine chemistry, the film is expected to have a good chemical resistance against SF₆ chemistries.⁹ Of interest in this study was how AlN deposited by PEALD, which supports lower temperature growth than the thermal process,¹⁰ performs as an etch mask. This topic is relevant for applications that could utilize this method of deposition. Etching selectivity was not examined in this work.

II. EXPERIMENTAL SETUP AND METHODOLOGY

AlN films were deposited on 100 and 200 mm Si (100) substrates using a Beneq TFS-500 capacitively coupled remote plasma ALD reactor. Trimethylaluminum (TMA) and ammonia (NH₃) plasma were used as precursors, with nitrogen as the carrier gas, at a temperature of 200 °C. The pulse/purge times were 0.8 s/3 s and 15 s/1 s for the TMA and NH₃ plasma precursors, respectively. The flow rate for both precursors was 400 sccm. Pressure was maintained at ~1 mbar. The rf plasma frequency was 13.56 MHz and the plasma power was 50 W. Plasma was turned on 1 s before and off 1 s after each NH₃ pulse to ensure that a maximum number of reactive species were available. The deposition rate for AlN was 0.96 Å/cycle. AlN films of ~50, ~100, and ~150 nm thicknesses were deposited by PEALD for the reactive ion etch (RIE) and ICP-RIE experiments.

The RIE experiments were carried out in a Plasmalab 80 Plus parallel plate reactor at room temperature, while the ICP-RIE experiments were carried out in a Plasmalab

^{a)}Electronic mail: alexander.pyymaki.perros@aalto.fi

System 100 reactor with He back-side cooling. Both systems are from Oxford Instruments. To establish if a temperature dependency on etch rates existed, experiments as low as -90°C were performed on the Plasmalab System 100. Temperature was not found to influence the etch characteristics of the AlN films; thus the results reported are limited to those conducted at roughly $15\text{--}20^{\circ}\text{C}$. The samples used in the RIE experiments consisted of segments from an AlN coated 200 mm silicon wafer, while the ICP-RIE experiments used intact 100 mm wafers. Samples for the ICP-RIE experiments were loaded into the chamber via a loadlock to maintain good stability of the chamber vacuum and to increase the repeatability of the etch results. The wafers were mechanically clamped, and helium pressure was applied to the back-side of the wafer for cooling. Helium flow rates into the ICP-RIE chamber varied between 5 and 11 sccm and did not appear to have a noticeable effect on etch rates. The rf on both systems operates at 13.56 MHz.

For the RIE experiments, SF_6 and O_2 flow rates and ratios were varied along with the bias power and pressure. For the ICP-RIE experiments, the gas compositions were fixed at 40 sccm SF_6 and 6 sccm O_2 . Chamber pressure and rf power to the platen, which determines the bias between sample and plasma, were varied. The ability to separately control plasma density and bias between plasma and platen with the ICP-RIE system allows a high degree of reactive species independent of the platen power. This allows an additional degree of control between the physical and chemical component of etching not possible with RIE systems.

Film thickness and uniformity were measured by a Philips Plasmos SD 2300 single wavelength ellipsometer at a wavelength of 632.8 nm and angle of 70° . Ellipsometric measurements were performed after deposition and immediately before and after each etching step to determine the blanket etch rate. To ensure better accuracy of the ellipsometric results, only samples with measured thicknesses greater than 30 nm were considered. A nonuniform etch rate at the sample edge was observed and these areas were excluded from measurement by having an edge exclusion of ~ 3 mm (mask etch uniformity is not addressed in the study). Repeated measurements showed no significant deviation. To confirm the ellipsometric measurements the cross sections of etched films were studied with a Zeiss SUPRA 40 scanning electron microscope.

The atomic concentrations of the film were determined by the time of flight elastic recoil detection analysis (TOF-ERDA) using 8.5 MeV $^{35}\text{Cl}^{+4}$ incident ions.¹¹ The mass density was determined with a Philips X'pert Pro Diffractometer operating at the Cu $K\alpha 1$ wavelength.

III. RESULTS AND DISCUSSION

A. Film characterization

In order to confirm that high-purity AlN films were deposited, elemental analysis was performed by TOF-ERDA on the films. The TOF-ERDA elemental depth profiles are presented in Fig. 1. The concentration of atoms in the bulk of the film, excluding the AlN surface and AlN/Si interface,

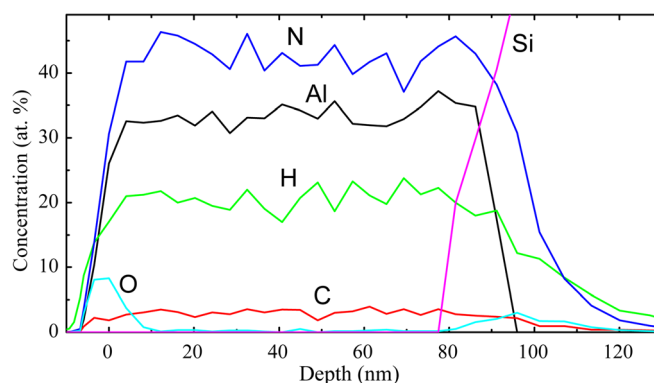


FIG. 1. (Color online) Elemental depth profiles of PEALD AlN film measured with TOF-ERDA.

is presented in Table I. The analysis revealed aluminum and nitrogen to exist at atomic concentrations of about 33 at. % and 43 at. %, respectively, with hydrogen making up almost the remaining ~ 21 at. % in the bulk of the film. The large hydrogen content of the film is important but expected of ALD AlN films deposited with NH_3 .^{12–14} In general, hydrogen content has a significant effect on the properties of a film.^{15–17} Despite the high hydrogen content, the results demonstrate that the film performs well as an etch mask. Oxygen was incorporated at remarkably low concentrations with a small increase in oxygen concentration recorded at the immediate surface and the interface. Oxygen is known to form on the surface of AlN after exposure to air.¹⁸

The wet etch rates of AlN were measured for HF (20%), HCl (37%), and H_2SO_4 (96%) aqueous etch solutions and found to be 56, 9, and 10 nm/min, respectively. The film was rapidly etched in AZ 351 developer, a caustic solution, at a rate of $\gg 100$ nm/min. A PEALD AlN film with a thickness of ~ 100 nm deposited on silicon is presented in Fig. 2 after patterning with developer AZ 351.

The film had a thickness variation of less than 1%, a refractive index of 1.8–1.9, and a density of 2.58 g/cm^3 . This differs from stoichiometric AlN, which has a refractive index and bulk density of 2.094 ($\lambda = 632.8$ nm) and 3.26 g/cm^3 , respectively.¹⁹ Bosund *et al.*, who analyzed PEALD AlN deposited with identical parameters and equipment as the film examined in this study, showed that the film's hydrogen content is responsible for this discrepancy in refractive index and density and, furthermore, demonstrated that the film is amorphous when deposited below 300°C .²⁰ The authors

TABLE I. Concentration of atoms in the bulk of the PEALD AlN film as obtained from TOF-ERDA.

Element	Concentration (at. %)
H	21 ± 4
C	2.6 ± 0.3
N	43 ± 3
O	0.25 ± 0.10
Na	0.13 ± 0.05
Al	33 ± 3

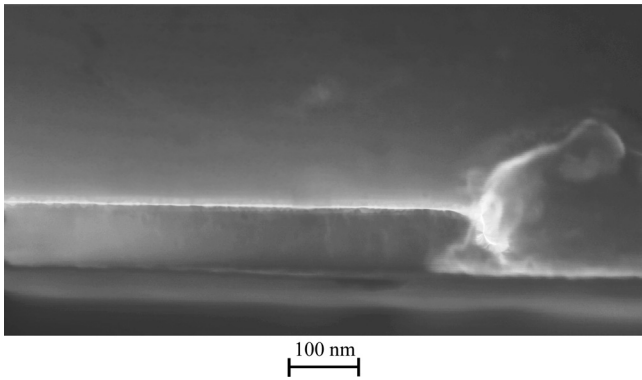


FIG. 2. PEALD AlN film of 100 nm thickness on silicon after patterning (etched region) in a caustic solution.

established a clear inverse correlation between the film’s hydrogen content for both refractive index and density.

B. RIE results

In Figs. 3 and 4, the etch rate of AlN as a function of the oxygen percentage in SF₆/O₂ at 60 and 20 sccm, respectively, is shown with varying bias power and chamber pressure. At 60 sccm it can be observed that the etch rate remains relatively constant irrespective of the compositions of oxygen, with only a slight increase observed at higher concentrations. There is some greater variability, however, observed when the flow rate is 20 sccm. Bias power plays the dominant role in the etching of the AlN film by controlling the electric field that accelerates the charged particles toward the wafer surface and the plasma density. When the process pressure is increased from 20 to 40 mTorr, a reduced etch rate is observed regardless of the SF₆/O₂ ratio and source power. By increasing the pressure, the energy and number of ions arriving on the wafer is decreased due to an increased number of collisions of ions with radicals and neutrals.^{21,22} Interestingly though, at this higher working pressure, a noticeable correlation between O₂ percentage and

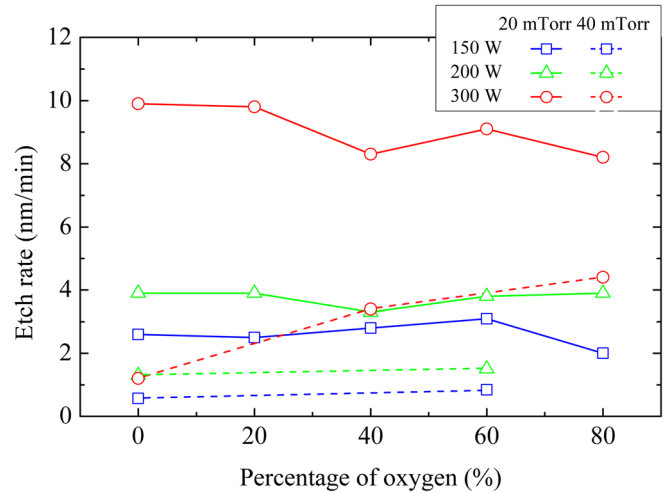


FIG. 4. (Color online) AlN etch rate in SF₆ and O₂, as a percentage of O₂ at 20 sccm at pressures of 20 and 40 mTorr for varying bias power.

etch rate emerges at least for 300 W. Figure 5 illustrates this correlation and also shows that increasing oxygen content results in a higher rf peak bias for a fixed platen power level. This relationship is particularly pronounced at 20 sccm, where increased oxygen levels increase the etch rate. Goyette *et al.* showed that in addition to nearly all fluxes of significant ions increasing monotonically with power, an addition of O₂ results in higher fluxes of O⁺ and SF₅⁺.²³ The higher flux of these ions resulting from the addition of O₂ causes more ion bombardment of the surface and could explain the observed correlation. It is assumed that these effects become more apparent at the higher working pressure, though a weak correlation can also be seen at the lower pressure when the flow rate is 60 sccm.

The bias power dependence of the etch rate is illustrated in Fig. 6 for varying SF₆/O₂ ratios at 60 sccm to further illustrate the correlation between the two. With higher bias power, the etching takes place at an increased rate by increasing the plasma density. Consequently, the number of charged particles bombarding the surface is increased as well as the energy of these impinging ions. It should be

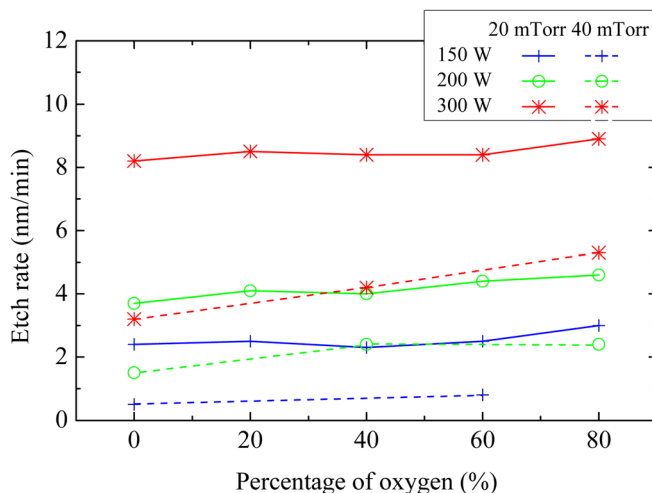


FIG. 3. (Color online) AlN etch rate in SF₆ and O₂, as a percentage of O₂ at 60 sccm at pressures of 20 and 40 mTorr for varying bias power.

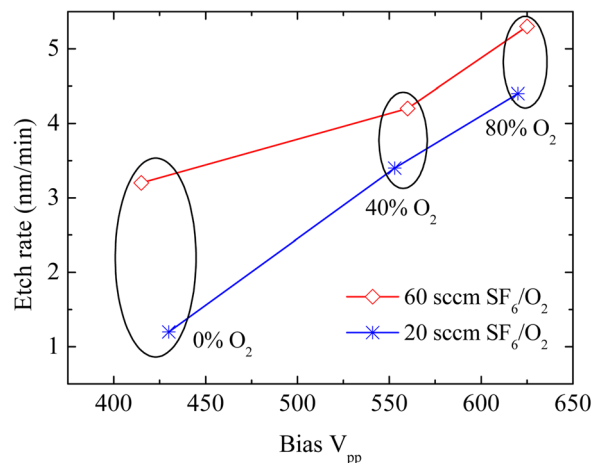


FIG. 5. (Color online) AlN etch rate in SF₆ and O₂, as a percentage of O₂ at 20 and 60 sccm at a pressure of 40 mTorr when bias power is 300 W.

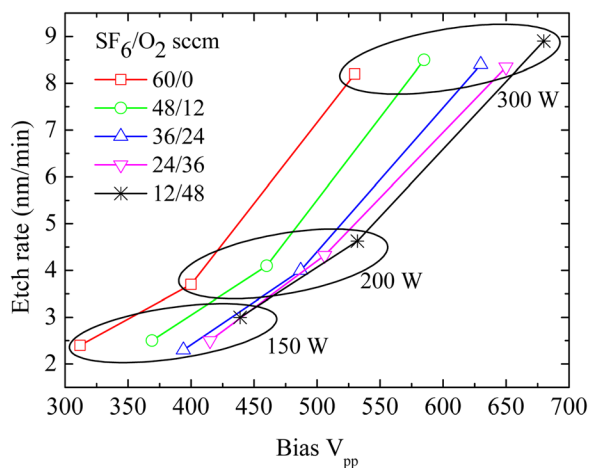


Fig. 6. (Color online) AlN etch rate in SF_6/O_2 as a function of rf peak bias voltage for different oxygen compositions at 60 sccm and 20 mTorr. Applied bias power is also labeled.

noted that increasing the oxygen content for a given bias power increases the rf bias voltage considerably, though the effects on etch rate are minimal at 20 mTorr except at higher O_2 levels, where, as mentioned earlier, a slight increase is observed.

These results seem to indicate that the main etch mechanism for AlN is physical rather than chemical for the SF_6/O_2 chemistries. The ICP-RIE results that follow provide greater insights into the matter of the dominant etch mechanism.

C. ICP-RIE results

For the ICP-RIE of AlN the etch rates are presented in Fig. 7 for a range of platen power levels at 10 and 20 mTorr of chamber pressure. The etch rate of AlN increases with platen power and lower pressure. The increase is due to the ions (SF_x^+ and O^+) being accelerated at greater rates, which in turn break the bonds of AlN more easily. Lower pressure increases the mean free path of ions as intermolecular collisions are reduced. This means there is less energy loss of ions when they reach the surface of the film. By reducing the platen power, the physical component of etching is

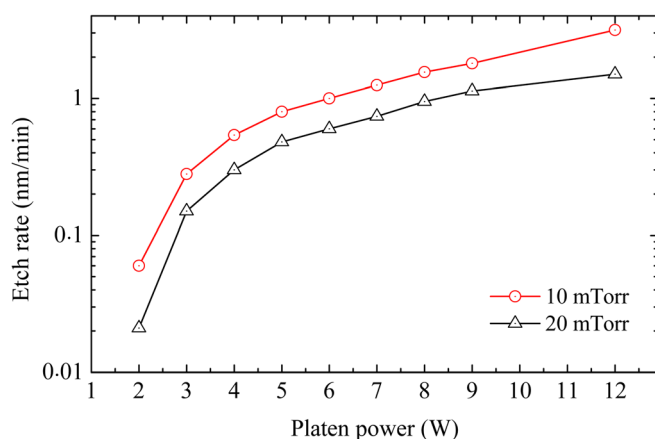


Fig. 7. (Color online) AlN etch rates as a function of platen power for ICP-RIE. (40 sccm SF_6 , 6 sccm O_2 , 5–11 sccm He, 1000 W ICP).

diminished, resulting in a marked reduction in etch rate. These results indicate that AlN is essentially inert to SF_x^+ and O^+ chemistry and is removed primarily by ion bombardment, thereby making the film's etch rate less pronounced at lower platen power levels. These results are to be expected as the involatile species AlF_3 , which forms on AlN's surface in fluorinated chemistries, acts as a protective coating that inhibits etching.^{24,25}

IV. SUMMARY AND CONCLUSIONS

The plasma etch characteristics of AlN deposited by PEALD at 200 °C were investigated for RIE and ICP-RIE systems for SF_6 and O_2 chemistries. For the RIE experiments, bias power, flow rate, and chamber pressure were varied for different ratios of SF_6 and O_2 . Etch rates below 10 nm/min were observed with the bias power and chamber pressure playing the most significant roles. The oxygen level plays a minor role in the etch rates until the pressure is raised from 20 to 40 mTorr when bias power is 300 W. Under these conditions increased oxygen levels result in an increased etch rate.

For the ICP-RIE experiments, the SF_6/O_2 gas mixture was fixed at 40 and 6 sccm, respectively, with platen power and chamber pressure varying. The film exhibited exceptionally low etch rates in the subnanometer region when platen power was below 6 W. The etch rates approached negligible levels the further the platen power was lowered. AlN was shown to be quite chemically inert to the SF_6/O_2 etch chemistry and is only etched by the physical mechanisms associated with plasma etching.

The suitability of low-temperature PEALD AlN as an etch mask in demanding plasma etch applications has been demonstrated, and it was shown that the film can serve as an attractive alternative to other resilient masking films.

ACKNOWLEDGMENTS

The authors would like to acknowledge the Finnish Agency for Technology and Innovation (TEKES ALDUEX project) for providing financial support. The authors also acknowledge Aalto University at Micronova for provision of cleanroom facilities.

¹M. Kettner, P. Biebersmith, N. Roldan, and B. K. Sharma, *Microwave J.* **44**, 104 (2001).

²N. Chasserio, S. Guillemet-Fritsch, T. Lebey, and S. Dagdag, *J. Electron. Mater.* **38**, 164 (2009).

³M. Leskelä and M. Ritala, *Thin Solid Films* **409**, 138 (2002).

⁴J. W. Lim and S. J. Yun, *Electrochem. Solid-State Lett.* **7**, F45 (2004).

⁵J. S. Park, H. S. Park, and S. W. Kang, *J. Electrochem. Soc.* **149**, C28 (2002).

⁶R. L. Puurunen, A. Root, P. Sarv, M. M. Viitanen, H. H. Brongersma, M. Lindblad, and A. O. I. Krause, *Chem. Mater.* **14**, 720 (2002).

⁷K. Kolari, *Microelectron. Eng.* **85**, 985 (2008).

⁸D. G. Senesky and A. P. Pisano, *23rd IEEE International Conference on Micro Electro Mechanical Systems (MEMS)*, Wanchai, Hong Kong, 24–28 January 2010 (IEEE, New York, 2010), pp. 352–355.

⁹K. R. Williams and R. S. Muller, *J. Microelectromech. Syst.* **5**, 256 (1996).

¹⁰X. Liu, S. Ramanathan, E. Lee, and T. E. Seidel, *Mater. Res. Soc. Symp. Proc.* **811**, 11 (2004).

- ¹¹M. Putkonen, T. Sajavaara, L. Niinistö, and J. Keinonen, *Anal. Bioanal. Chem.* **382**, 1791 (2005).
- ¹²J. Jokinen, P. Haussalo, J. Keinonen, M. Ritala, D. Riihela, and M. Leskela, *Thin Solid Films* **289**, 159 (1996).
- ¹³D. Riihela, M. Ritala, R. Matero, M. Leskela, J. Jokinen, and P. Haussalo, *Chem. Vap. Deposition* **2**, 277 (1996).
- ¹⁴Y. J. Lee and S.-W. Kang, *Thin Solid Films* **446**, 227 (2004).
- ¹⁵S. S. Han, B. H. Jun, K. No, and B. S. Bae, *J. Electrochem. Soc.* **145**, 652 (1998).
- ¹⁶T. H. Fang and W. J. Chang, *Appl. Surf. Sci.* **252**, 6243 (2006).
- ¹⁷H. Wong and H. Iwai, *Microelectron. Eng.* **83**, 1867 (2006).
- ¹⁸A. Weidinger, D. Nagengast, Ch. Rehm, F. Klose, and B. Pietzak, *Thin Solid Films* **275**, 48 (1996).
- ¹⁹G. A. Slack and T. F. McNelly, *J. Cryst. Growth* **34**, 263 (1976).
- ²⁰M. Bosund, T. Sajavaara, M. Laitinen, T. Huhtio, M. Putkonen, V.-M. Airaksinen, and H. Lipsanen, *Appl. Surf. Sci.* **257**, 7827 (2011).
- ²¹D. L. Flamm and G. K. Herb, in *Plasma Etching, An Introduction*, edited by D. M. Manos and D. L. Flamm (Academic, Boston, 1989), Chap. 1, pp. 1–90.
- ²²J. Liu, G. L. Huppert, and H. H. Sawin, *J. Appl. Phys.* **68**, 3916 (1990).
- ²³A. N. Goyette, Y. Wang, and J. K. Olthoff, *J. Vac. Sci. Technol. A* **19**, 1294 (2001).
- ²⁴K. L. Seaward, N. J. Moll, D. J. Coulman, and W. F. Stickle, *J. Appl. Phys.* **61**, 2358 (1987).
- ²⁵C. B. Cooper, S. Salimian, and H. F. MacMillan, *Appl. Phys. Lett.* **51**, 225 (1987).