

---

**This is an electronic reprint of the original article.  
This reprint *may differ* from the original in pagination and typographic detail.**

**Author(s):** Peltonen, Jussi; Cronin, Neil; Stenroth, Lauri; Finni Juutinen, Taija; Avela, Janne

**Title:** Achilles tendon stiffness is unchanged one hour after a marathon

**Year:** 2012

**Version:**

**Please cite the original version:**

Peltonen, J., Cronin, N., Stenroth, L., Finni Juutinen, T., & Avela, J. (2012). Achilles tendon stiffness is unchanged one hour after a marathon. *The Journal of Experimental Biology*, 215(20), 3665-71. <https://doi.org/10.1242/jeb.068874>

All material supplied via JYX is protected by copyright and other intellectual property rights, and duplication or sale of all or part of any of the repository collections is not permitted, except that material may be duplicated by you for your research use or educational purposes in electronic or print form. You must obtain permission for any other use. Electronic or print copies may not be offered, whether for sale or otherwise to anyone who is not an authorised user.

## RESEARCH ARTICLE

# Achilles tendon stiffness is unchanged one hour after a marathon

Jussi Peltonen\*, Neil J. Cronin, Lauri Stenroth, Taija Finni and Janne Avela

Neuromuscular Research Center, Department of Biology of Physical Activity, University of Jyväskylä, Jyväskylä 40014, Finland

\*Author for correspondence (jussi.t.peltonen@jyu.fi)

### SUMMARY

Overuse-induced injuries have been proposed as a predisposing factor for Achilles tendon (AT) ruptures. If tendons can be overloaded, their mechanical properties should change during exercise. Because there data are lacking on the effects of a single bout of long-lasting exercise on AT mechanical properties, the present study measured AT stiffness before and after a marathon. AT stiffness was determined as the slope of the force–elongation curve between 10 and 80% of maximum voluntary force. AT force–elongation characteristics were measured in an ankle dynamometer using simultaneous motion-capture-assisted ultrasonography. Oxygen consumption and ankle kinematics were also measured on a treadmill at the marathon pace. All measurements were performed before and after the marathon. AT stiffness did not change significantly from the pre-race value of  $197 \pm 62 \text{ N mm}^{-1}$  (mean  $\pm$  s.d.) to the post-race value of  $206 \pm 59 \text{ N mm}^{-1}$  ( $N=12$ ,  $P=0.312$ ). Oxygen consumption increased after the race by  $7 \pm 10\%$  ( $P<0.05$ ) and ankle kinematic data revealed that in nine out of 12 subjects, the marathon induced a change in their foot strike technique. The AT of the physically active individuals seems to be able to resist mechanical changes under physiological stress. We therefore suggest that natural loading, like in running, may not overstress the AT or predispose it to injury. In addition, decreased running economy, as well as altered foot strike technique, was probably attributable to muscle fatigue.

Key words: running, cost of transport, overuse, ultrasonography, foot strike pattern.

Received 7 December 2011; 26 July 2012

### INTRODUCTION

The Achilles tendon (AT) is one of the most ruptured and surgically treated tendons in the human body (Józsa et al., 1989). It is often injured in sports, especially in activities involving strenuous stretching of the tendon such as jumping or running (Kvist, 1994). The history of the AT is long; it appeared in our anatomy 2 million years ago. It is one of the special characteristics in the human body that facilitate our endurance running ability (Lieberman and Bramble, 2007) and it may have assisted in the pursuit of prey (Bramble and Lieberman, 2004). This poses an important question: why is the AT so prone to injuries if it has been so crucial to our survival (Malvankar and Khan, 2011)?

The AT is a big spring that acts to save energy and amplify power during the human step. Because it can experience forces up to 10 kN (Komi et al., 1992), it is difficult to imagine how it could be ruptured with a single stretch. To overcome this, a theory of overuse-induced rupture has been developed, which states that overloading of the tendon could lead to overuse injuries (Galloway et al., 1992). The idea of overuse injury as a predisposing factor to tendon ruptures is supported by the finding that 97% of ruptured tendons show signs of degenerative diseases (Kannus and Józsa, 1991).

Although the exact mechanisms of tendon ruptures are still unknown, several authors of *in vitro* studies have concluded that tendon ruptures are associated with a prior reduction in Young's modulus (Schechtman and Bader, 1994; Schechtman and Bader, 2002; Wang et al., 1995; Wang and Ker, 1995; Wren et al., 2003). Young's modulus can be thought of as a normalised stiffness because it depends on tendon material properties alone, whereas stiffness also depends on tendon cross-sectional area and length. Therefore,

if a single exercise bout can overload the AT, this should be evident as a reduction in AT stiffness.

The purpose of the present study was to test the theory that physical exercise can mechanically overload the AT and reduce its stiffness. Because the mechanical properties of the AT have been previously shown to be unaltered by a short-duration exercise (Farris et al., 2011b; Mademli et al., 2006; Peltonen et al., 2010), the present study tested the effects of a long-lasting exercise. Thus, the stiffness of the AT was determined before and after a marathon. For most humans, this task represents the most strenuous single bout of exercise ever performed.

### MATERIALS AND METHODS

#### Subjects

Twelve marathon runners participated in the study (Table 1): eight who completed a full marathon (42 km) and four who completed a half marathon (21 km). Half-marathon runners were considered to be less experienced because their target speed over a shorter distance (mean:  $10.8 \text{ km h}^{-1}$ ) was the same as for full-marathon runners (mean:  $10.9 \text{ km h}^{-1}$ ). All subjects were physically active with a life-long training background mostly in endurance running. Participants were informed about the procedures, benefits and possible risks involved in the study, and they all signed a written consent prior to the study. All methods were approved by the local ethical committee and the study conformed to the standards set by the Declaration of Helsinki.

#### Protocol overview

AT stiffness was tested on three occasions: (1) 2–4 days before the race (2 days pre-race), (2) 2 h before the race (2 h pre-race) and (3)

Table 1. Anthropometric data, Achilles tendon (AT) mechanical properties and race statistics

Subject	Sex	Age (years)	Height (cm)	Mass (kg)	AT CSA (mm <sup>2</sup> )	Young's modulus (GPa)	AT initial length (mm)	Distance (km)	Time (h:min)	Speed (km h <sup>-1</sup> )
1	M	48	179	75	94	0.54	210	42	3:26	12.2
2	M	55	182	70	71	0.74	274	21	1:46	11.8
3	M	30	177	67	61	1.25	282	42	3:56	10.7
4	M	20	166	61	55	1.53	272	21	1:43	12.1
5	M	22	183	82	71	0.63	265	42	3:52	10.8
6	F	42	157	48	52	0.76	240	21	2:12	9.5
7	F	43	156	56	53	0.60	242	42	3:20	12.6
8	F	22	163	53	68	0.90	254	42	3:52	10.8
9	M	43	179	79	80	0.39	264	42	3:43	11.3
10	M	49	179	76	75	0.83	254	42	3:31	11.9
11	M	49	180	70	59	0.69	266	42	4:03	10.3
12	F	26	161	59	63	0.48	250	21	2:06	10.0
Mean ± s.d.		37±13	172±10	66±11	67±4	0.78±0.33	256±19			11.2±0.3

CSA, cross-sectional area.

1 h after the race (1 h post-race). Tendon stiffness was tested twice before the race to assess test–retest repeatability. To examine whether possible changes in stiffness were linked to changes in running economy, ankle kinematics and oxygen consumption were measured during 4 min sub-maximal treadmill running in the 2 days pre-race and 1 h post-race tests.

Testing of tendon stiffness

Tendon mechanical testing was performed in a custom-built ankle dynamometer (University of Jyväskylä, Finland) (Fig. 1A) that operated in a passive mode, i.e. the pedal did not move. Subjects were seated with the knee fully extended, the ankle at a right angle (sole of the foot perpendicular to the shank) and the hip flexed to 60deg (0deg equals full extension). Their right leg was tightly anchored between the backrest and the foot pedal, where a force transducer (Precision TB5-C1, Raute, Nastola, Finland) was installed. The system allows only minimal ankle plantarflexion (typically 1–2deg), but even the smallest heel movement was quantified with a position-sensitive potentiometer placed under the heel. Foot reaction force and heel position data were collected with a 16bit AD board (CED 1401, Cambridge Electronic Design, Cambridge, UK) at 1 kHz and stored on a computer for later analysis.

Mechanical testing started with a warm-up of five to 10 submaximal attempts to plantar flex the ankle. Maximal voluntary contraction (MVC) force was then determined during maximal isometric efforts lasting 3 s each. The best of three trials was selected as the MVC force. Warm-up and MVC trials together served as conditioning contractions to stabilise the AT mechanical behaviour (Maganaris, 2003). The AT load-deformation data were collected during three sub-maximal (80% of MVC) contractions as illustrated in Fig. 2A. It should be noted that even greater AT force and

elongation could be achieved in high-impact loading, such as sprint running. This is because tendon stretch is not achieved by shortening muscles, and sarcomere length can be held closer to the optimum. However, the observed tendon forces (Table 2) were enough to extend the AT to the linear region of the force–elongation curve (Fig. 2B) and were thus sufficient to reliably determine changes in the AT stiffness.

AT length was measured using motion-capture-assisted ultrasonography (US). With this method, US image coordinates can be transformed to the laboratory coordinate system (CS) for accurate calculation of AT length. To identify the myotendinous junction (MTJ) of the medial gastrocnemius muscle (GAM), a linear array US probe (Aloka 5712, Osaka, Japan) was placed in the sagittal plane over the right leg 2 cm medial to the junction separating the medial and lateral portions of the GAM. During the first session, an outline of the probe was drawn on the skin with permanent marker and this outline, together with the MTJ, were used as reference points to ease later identification of the same muscle area. An impedance-matched acoustic pad was placed under the probe to ease propagation of ultrasound waves, and the probe was secured to the leg with elastic bandages (Fig. 1A). A digital camera (InLine 250, Fastec Imaging, San Diego, USA) was placed on the ankle dynamometer’s left side to image movement of the probe during measurements. The camera’s optical axis was perpendicular to the sagittal plane and the camera was focused on the US probe’s four reflective markers that were placed on the probe handle to enable movement tracking. The camera and the US unit operated at 125 frames s<sup>-1</sup>. US images were collected by the imaging unit (Aloka Alpha 10) and the digital camera’s video was recorded for later export. The system was synchronised *via* the AD board, which was programmed to output a transistor–transistor logic (TTL) pulse. The TTL pulse was fed into the US unit’s pulse

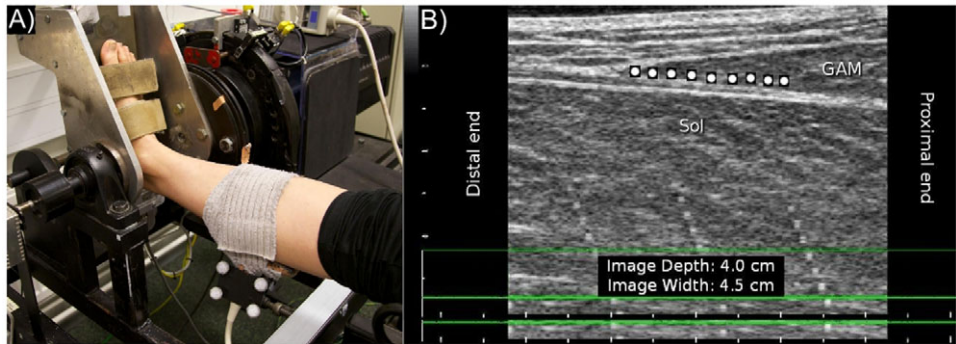


Fig. 1. (A) The ankle dynamometer setup. (B) Illustration of the placement of the tracking markers in the ultrasound image. GAM, gastrocnemius medialis; Sol, soleus.

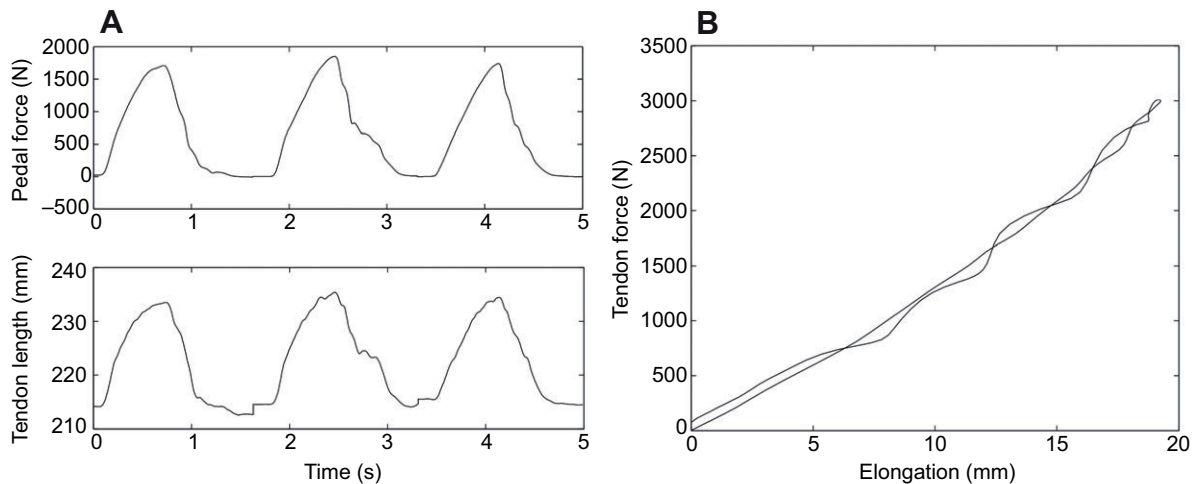


Fig. 2. Example of the AT stiffness analysis for subject number 5. (A) Recorded pedal force up to 80% of maximal voluntary activation and calculated tendon length. (B) The resulting tendon force–elongation curve. Note that for visualisation purposes the time axis is compressed and displayed without pauses between trials.

input and displayed on the monitor. At the same time, ECG detection was enabled, which created a moving vertical cursor that overlaps both the US image and the TTL pulse. The US unit was synchronised by aligning the vertical cursor with the rising edge of the TTL pulse. The camera was synchronised by a flashing light signal triggered by the same TTL pulse. Maximum desynchronisation between camera and US images was the inverse of the frame rate,  $1/125=8$  ms. AT cross-sectional area was analysed by taking transverse US images 3 cm above the heel.

#### Treadmill running

While running on a motorised treadmill (OJK-1, Telineyhtymä, Kotka, Finland), subjects wore their race shoes and the running speed was chosen according to each subject's target time. Two-dimensional ankle kinematics were recorded with a high-speed digital camera (InLine 250, Fastec Imaging) operating at  $125 \text{ frames s}^{-1}$ . The camera was located on the subject's right side perpendicular to the sagittal plane. Three reflective markers were placed at different locations on the subject's right leg: (1) the center of the knee, (2) the lateral malleolus and (3) the distal head of fifth metatarsal. Markers 1 and 2 were attached to the skin or

running tights to minimise their movement. Marker 3 was placed on the running shoe.

To quantify running economy, subjects wore a breathing mask connected to an oxygen gas analyser (VMax series 229, SensorMedics, Yorba Linda, CA, USA). Steady-state oxygen consumption was achieved by running at a constant speed for 4 min. Oxygen consumption was taken as the average during the fifth minute. Running kinematics were recorded during the last minute with a 5 s video clip containing four to six strides.

#### Analysis of tendon stiffness

Ankle joint torque was calculated by multiplying the foot reaction force with the foot lever arm length, measured between the first metatarsal and the ankle pivot point defined as the centre of the medial malleolus. AT force was then calculated by dividing ankle torque by tendon lever arm length, measured between the pivot point and the posterior surface of the calcaneus. The placement of the foot on the pedal leads to removal of tendon slack and therefore initial tension in the AT. This initial tension varied among individuals. It was on average 0.3 kN and was subsequently subtracted from the AT force before analysis of tendon stiffness. Lever arm lengths were taken as

Table 2. Achilles tendon (AT) mechanical properties and cost of transport (COT) before and after the marathon race

Subject	AT maximum force (kN)			Stiffness ( $\text{N mm}^{-1}$ )			COT ( $\text{ml O}_2 \text{ kg}^{-1} \text{ km}^{-1}$ )	
	2 days pre-race	2 h pre-race	1 h post-race	2 days pre-race	2 h pre-race	1 h post-race	2 days pre-race	1 h post-race
1	2.2	3.4	3.3	227	255	291	241	228
2	2.1	2.6	2.5	188	209	194	209	219
3	3.3	3.4	3.2	267	260	283	232	243
4	3.4	3.7	3.6	310	237	252	243	245
5	3.9	5.4	5.0	168	219	246	216	230
6	2.2	2.3	2.3	179	173	165	224	230
7	2.2	—	1.3	132	—	151	212	227
8	3.7	4.2	3.9	241	261	254	233	243
9	2.9	3.1	1.2	124	159	138	220	249
10	3.5	4.4	3.5	253	297	201	218	235
11	2.7	2.8	2.5	154	153	191	239	235
12	2.3	2.4	2.3	119	116	109	228	306
Mean $\pm$ s.d.	$2.9 \pm 0.7$	$3.4 \pm 0.9^\dagger$	$2.9 \pm 1.1$	$197 \pm 62$	$213 \pm 56^\dagger$	$206 \pm 59$	$226 \pm 11$	$241 \pm 22^*$

\*Significantly different from the 2 days pre-race value ( $P < 0.05$ ).

$^\dagger$ Mean values for the 2 h pre-race group include only 11 subjects and are therefore not comparable to the 2 days pre-race and 1 h post-race groups, which include all 12 subjects.



a projection along the sole of the foot when it was perpendicular to the shank. Therefore, lever arms were considered to be perpendicular to the line of force. AT stress was calculated by dividing force by tendon cross-sectional area.

AT length was calculated as the distance between the MTJ of the GAM muscle and the bony superior and posterior surface of the heel. Initial position of the heel was taken when the foot was properly placed on the pedal. Possible heel displacement in the superior–inferior direction during muscle contraction was measured with a position sensor located under the heel. MTJ displacement was analysed from the US images with software that exploits pyramidal implementation of Lukas–Kanade feature tracking (Bouguet, 2001). The software requires the user to place nine tracking points over the area of interest, as shown in Fig. 1B. The tracking points were placed just superior to the MTJ along the aponeurosis separating the GAM and the soleus, but still on the side of the GAM. We have found that this placement yields the most repeatable results. The tracking algorithm has been previously shown to have a repeatability of 98% (Magnusson et al., 2003). Each trial was tracked twice and the resulting coordinates were averaged. The average was then taken as the MTJ coordinates in the US probe CS. Coordinate transformation between two CSs is always possible if both CSs are defined at all instants of time, i.e. their origins and axes are known. A rigid video calibration object was used to determine the laboratory CS, which did not change over time, and the CS of the US probe was given by the four reflective markers placed on the probe handle (Fig. 1A). The origin of the US image relative to the probe markers was determined by placing an echogenic marker on the image origin and measuring its distance from the markers. Because all movement could be restricted to the sagittal plane, analysis was made in two dimensions and it was estimated that this introduced a  $\sim 0.2$  mm systematic error to tendon elongation and can thus be neglected. A similar procedure has also been used in three-dimensional space (Gerus et al., 2011; Lichtwark and Wilson, 2005). Tendon elongation was calculated by subtracting initial tendon length at the onset of force production and strain was calculated by dividing tendon elongation by initial length.

Three AT force–elongation curves were normalised in time and then averaged, resulting in one force–elongation curve per subject per testing session (Fig. 2B). AT stiffness was calculated as the slope of the least-squares line of the ascending limb of the force–elongation curve between 10 and 80% of MVC force. Young's modulus was determined the same way, but from the stress–strain curve.

#### Analysis of running economy

Cost of transport (COT) was expressed in millilitres of oxygen per kilogram per kilometre ( $\text{ml O}_2 \text{ kg}^{-1} \text{ km}^{-1}$ ), which is known to be relatively independent of running speed (Cavagna and Kaneko, 1977).

Ankle kinematics were recorded because they were thought to be related to possible AT stiffness changes. Digitised joint coordinates were filtered with a Butterworth low-pass filter (8 Hz) and ankle angle was calculated as the angle between the shank segment (from the centre of the knee to the lateral malleolus) and the foot segment (from the lateral malleolus to the distal head of the fifth metatarsal). Landing and take-off were determined from the video. All four to six contacts were then time normalised and averaged to yield a single ankle angle trace per subject.

To define landing technique, the angle at ground contact was offset corrected and deviations in ankle angle were determined relative to this zero value: a positive angle corresponded to dorsiflexion and a negative angle to plantarflexion. Subjects were

categorised into three groups: forefoot contact (FFC), mid-foot contact (MFC) and heel contact (HC). The categorisation was based on the ankle angle deflection (relative to ground contact) at the moment corresponding to 0.225 times the interval from the ground contact to the maximum dorsiflexion deflection (illustrated by circles in Fig. 3). If the deflection was more than +1 deg (dorsiflexion), the subject was an FFC runner; if the deflection was less than –1 deg (plantarflexion), the subject was an HC runner; and if the deflection was between –1 and +1 deg, the subject was an MFC runner. Categorisation was carried out before and after the marathon.

#### Statistics

Data were tested for normality using the Kolmogorov–Smirnov test and the non-parametric Wilcoxon's signed-rank test was used to test differences between sessions and groups accordingly. Spearman's linear correlation coefficient was also calculated between selected parameters. All runners were treated as one group because full and half marathons were considered to be equally stressful for each individual relative to his/her training background. (In comparisons, full- and half-marathon runners behaved statistically similarly.) Data are presented as means  $\pm$  s.d.

#### RESULTS

All subjects finished the marathon close to their target time. The mean running speed during the race was not significantly different from the mean running speed on the treadmill ( $P=0.115$ ; Table 1).

#### AT mechanical properties

All 12 subjects were tested 2 days before and 1 h after the marathon (Table 2). Mean AT stiffness did not change statistically between the 2 days pre-race test ( $197 \pm 62 \text{ N mm}^{-1}$ ) and the 1 h post-race test ( $206 \pm 59 \text{ N mm}^{-1}$ ;  $N=12$ ,  $P=0.312$ ). Tendon stiffness was measured at the same absolute force level before and after the race, because there was no statistical difference between MVC in the 2 days pre-race and 1 h post-race tests:  $2.9 \pm 0.7$  versus  $2.9 \pm 1.1$  kN, respectively ( $P=0.638$ ). Young's modulus of the AT was  $0.78 \pm 0.33 \text{ GPa}$  (Table 1).

Excluding one subject who did not participate in the 2 h pre-race test and analysing repeatability between the 2 days pre-race and 2 h pre-race tests revealed that AT stiffness was highly correlated ( $N=11$ ,  $R=0.844$ ,  $P<0.01$ ) and that there were no statistical differences between the results:  $203 \pm 61 \text{ N mm}^{-1}$  in the 2 days pre-race test versus  $213 \pm 56 \text{ N mm}^{-1}$  in the 2 h pre-race test ( $P=0.320$ ). Within this group, AT MVC force was higher ( $N=11$ ,  $P<0.001$ ) in the 2 h pre-race test ( $3.4 \pm 0.9$  kN) than in the 2 days pre-race test ( $2.9 \pm 0.9$  kN), probably indicating learning. It then decreased back to  $3.0 \pm 1.0$  kN at 1 h after the race ( $P<0.01$ ).

#### Running economy and landing technique

Mean COT was  $226 \pm 11 \text{ ml O}_2 \text{ kg}^{-1} \text{ km}^{-1}$  in the 2 days pre-race test, and significantly higher in the 1 h post-race test at  $241 \pm 22 \text{ ml O}_2 \text{ kg}^{-1} \text{ km}^{-1}$  ( $N=12$ ,  $P<0.05$ ). Change in stiffness was not correlated with change in COT ( $R=-0.262$ ,  $P=0.410$ ).

Six out of 12 subjects changed their landing technique from FFC to either MFC or HC following the race. From the remaining six, three did not change their landing technique (they maintained MFC or HC) and three went from HC to MFC. There were no statistical differences in any of the measured parameters between the group of runners who were initially FFC runners and the rest.

#### DISCUSSION

The most important finding of the present study was that AT stiffness was not influenced by the marathon, and thus the theory of overuse-

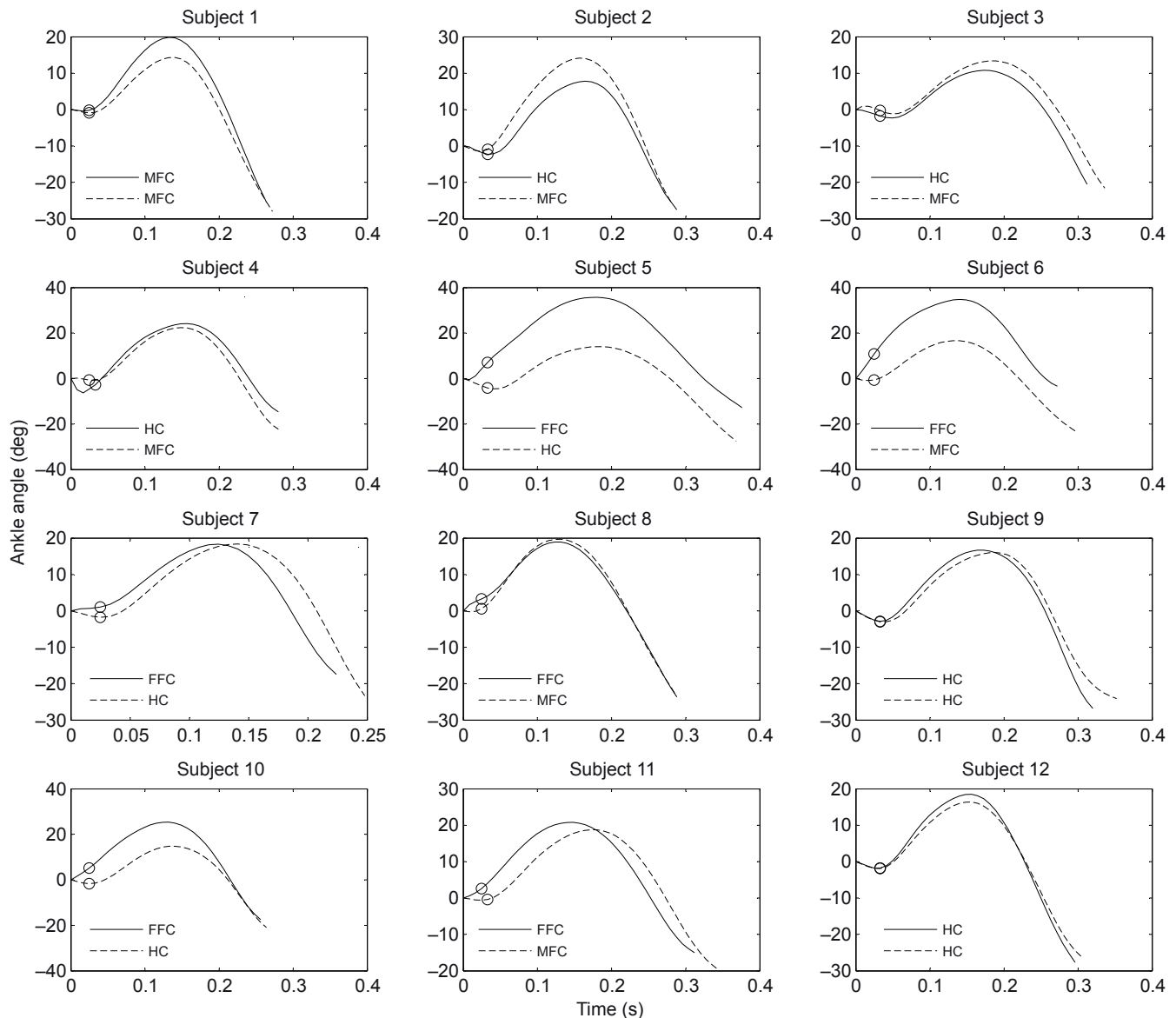


Fig. 3. Mean ankle angle traces of four to six running steps before (solid line) and after (broken line) the marathon. Positive angle corresponds to dorsiflexion and negative to plantarflexion (relative to ground contact). Circles indicate the moment when ankle angle was measured for categorisation: FFC, forefoot contact; MFC, mid-foot contact; HC, heel contact.

induced mechanical changes in the AT was not supported. The second important finding was that day-to-day repeatability of AT stiffness was good, suggesting that this is a valid method for studying tendon mechanical changes over time. It is not known what happened immediately after the race, because AT stiffness was deduced after a 1 h delay. However, it is unlikely that the results would have been different if tendon stiffness had been measured immediately after the race, because AT mechanical properties have been previously shown to remain unchanged immediately after fatiguing concentric contractions (Mademli et al., 2006), hopping to exhaustion (Peltonen et al., 2010) and 30 min of running (Farris et al., 2011b).

#### AT fatigue resistance

Several studies have shown that AT stiffness is unchanged after an acute bout of exercise (Farris et al., 2011b; Mademli et al., 2006; Peltonen et al., 2010). On the contrary, patella tendon

stiffness has been shown to decrease after 50 cycles in which 3 or 10 s MVC contractions were alternated with 3 or 10 s rest periods (Kubo et al., 2001a; Kubo et al., 2001b; Kubo et al., 2005). Stress-in-life, the maximum physiological stress that a tendon experiences based on its muscle's cross-sectional area, has been shown to affect tendon fatigue quality. Tendons that have high stress-in-life tend to be more fatigue resistant (Ker et al., 2000; Pike et al., 2000). Therefore, the usually higher tensile stress of the AT (70–80 MPa) (Lichtwark and Wilson, 2005; Peltonen et al., 2010) compared with that of the patella tendon (30–40 MPa) (Hansen et al., 2006; Westh et al., 2008) suggests that the AT may be more fatigue resistant, which could explain the discrepancy in the literature between tendons.

AT ruptures have been demonstrated at physiological stress levels (40–60 MPa) after only 1000 loading cycles where 8% initial strain was exceeded (Wren et al., 2003). This is in vast contrast to the present results and warrants attention. Because AT force during

running is typically 3–4 kN (Komi et al., 1992) and mean AT cross-sectional area was 67 mm<sup>2</sup> in the present study, the tensile stress during running probably varied between 45 and 60 MPa. The AT strain during running is reported to be 3.5% (Farris et al., 2011a), which is probably an underestimation because the AT would not be very good at storing elastic energy during running, which is one of its major functions (Alexander and Bennet-Clark, 1977). Nonetheless, 3.5% is given for the portion of the AT that attaches to the GAM muscle, which could be half of the strain in the free AT directly above the heel (Finni et al., 2003; Magnusson et al., 2003). Therefore, the conditions set by the study of Wren and colleagues (Wren et al., 2003) to rupture AT after 1000 loading cycles are probably met during a marathon, which consists of peak forces of several kilonewtons that are repeated approximately 20,000 times. Because several other studies have shown that it takes considerably more than 1000 cycles to rupture a tendon (Pike et al., 2000; Schechtman and Bader, 2002; Wang et al., 1995), it is likely that donor age, tissue degeneration or clamping problems influenced the early AT rupture after 1000 cycles, and that the living human AT is not as prone to injuries as cadaver tendons are.

#### Validity of tendon data

Because the initial tension (approximately 0.3 kN) is subtracted from the tendon force, the maximum tendon force (3.4 kN) in the present study is probably a slight underestimation, but it is still comparable to previously reported values, e.g. 1–3 kN in walking (Finni et al., 1998), 4 kN in hopping (Fukashiro et al., 1995) and 9 kN in sprint running (Komi et al., 1992). In the present study, the point of application of force was assumed to be under the first metatarsal. This is true only at the time of the maximum force. We have verified with pressure insoles that the force vector travels from the fifth metatarsal towards the first metatarsal when the force builds up, thus increasing the foot lever arm. However, tendon lever arm length also increases during application of force (Rugg, 1990) and these changes may cancel each other out in gear ratio calculations. Thus we have used constant lever arm lengths. Even if a small error is introduced, it is likely to be the same before and after the marathon and does not influence the main result of the present study, which was that the AT stiffness is unchanged after a marathon. The mean stiffness and Young's modulus in the present study (197 N mm<sup>-1</sup> and 0.78 GPa) were consistent with those previously reported under a similar dynamometer setup (Maganaris and Paul, 2002) and during one-legged hopping (Lichtwark and Wilson, 2005). The Young's modulus was also comparable to values previously reported for human (Schechtman and Bader, 2002) and animal (Pollock and Shadwick, 1994) tendons *in vitro*.

#### Running technique and economy

Nine out of 12 subjects changed their landing technique after the marathon, probably to compensate for neuromuscular fatigue. Changes in running technique did not equate to a more efficient way of transportation; on the contrary, their running was less economical after the race, as evidenced by their increased COT. This is in line with previous observations and no single reason for decreased running economy has been identified (Hauswirth et al., 1997; Kyröläinen et al., 2000). It was presumed that if the AT was fatigued, the utilisation of elastic energy would be reduced, which could influence COT in running. However, the AT was not fatigued and changes in COT and stiffness were not correlated. A similar observation has been made previously, when AT elongation was directly measured during a 30 min run, and no changes in elongation were found (Farris et al., 2011b). However, we did find evidence

for calf muscle fatigue, because the MVC force decreased after the race from the 2 h pre-race test. Therefore, subjects probably changed their running technique as a result of muscle fatigue.

#### Implications for human movement

A large body of evidence suggests that physical activity does not reduce the stiffness of the AT, but rather a lack of physical activity does. A typical training effect, regardless of whether training is plyometric or isometric resistance training, is an increase in AT stiffness (Burgess et al., 2007), although the effect may be invariant to training background as runners and non-runners were found to have similar AT stiffness (Rosager et al., 2002). This may indicate that it is advantageous to have a certain optimal stiffness for achieving efficient muscle output during cyclic movements (Lichtwark and Barclay, 2010). In contrast to physical activity, it is well known that physical inactivity, such as 90 days of bed rest (Reeves et al., 2005) or aging-related reductions in exercise frequency (Narici and Maganaris, 2006), decreases AT stiffness. When the training data are supplemented with the finding that neither long-lasting (present study) nor short-duration exercise (Farris et al., 2011b; Mademli et al., 2006; Peltonen et al., 2010) causes a reduction in AT stiffness, the theory of overuse-induced mechanical changes in the human AT is not strongly supported by the published literature.

Returning to the question posed in the introduction about why the AT is so prone to injuries, the present study indicates that even long-lasting physiological loading, like that incurred during a marathon, does not cause notable reduction in the AT stiffness. Thus it may be that running itself does not predispose the AT to injuries. Rather, a combination of a rapid increase in stress, a quick crossover to new sporting activities without a training period, poor technique and/or improper footwear could play a role that has not yet been identified. The present study also found that subjects increased their oxygen consumption and changed their landing technique after a marathon, both of which were probably related to fatigue of the muscles rather than the tendon.

#### LIST OF ABBREVIATIONS

AT	Achilles tendon
COT	cost of transport
CS	coordinate system
FFC	forefoot contact
GAM	gastrocnemius medialis
HC	heel contact
MFC	mid-foot contact
MTJ	myotendinous junction
MVC	maximum voluntary contraction
TTL	transistor–transistor logic
US	ultrasound/ultrasonography

#### ACKNOWLEDGEMENTS

The authors gratefully acknowledge the technical staff at the University of Jyväskylä for assistance with this study.

#### FUNDING

This research received no specific grant from any funding agency in the public, commercial or not-for-profit sectors.

#### REFERENCES

- Alexander, R. M. and Bennet-Clark, H. C. (1977). Storage of elastic strain energy in muscle and other tissues. *Nature* **265**, 114–117.
- Bouguet, J. Y. (2001). Pyramidal implementation of the Lucas Kanade feature tracker. Description of the algorithm. Available at: <http://sourceforge.net/projects/opencvlibrary/>.
- Bramble, D. M. and Lieberman, D. E. (2004). Endurance running and the evolution of Homo. *Nature* **432**, 345–352.

- Burgess, K. E., Connick, M. J., Graham-Smith, P. and Pearson, S. J. (2007). Plyometric vs. isometric training influences on tendon properties and muscle output. *J. Strength Cond. Res.* **21**, 986-989.
- Cavagna, G. A. and Kaneko, M. (1977). Mechanical work and efficiency in level walking and running. *J. Physiol.* **268**, 467-481.
- Farris, D. J., Trewartha, G. and McGuigan, M. P. (2011a). Could intra-tendinous hyperthermia during running explain chronic injury of the human Achilles tendon? *J. Biomech.* **44**, 822-826.
- Farris, D. J., Trewartha, G. and McGuigan, M. (2011b). The effects of a 30-min run on the mechanics of the human Achilles tendon. *Eur. J. Appl. Physiol.* **112**, 653-660.
- Finni, T., Komi, P. V. and Lukkariniemi, J. (1998). Achilles tendon loading during walking: application of a novel optic fiber technique. *Eur. J. Appl. Physiol.* **77**, 289-291.
- Finni, T., Hodgson, J. A., Lai, A. M., Edgerton, V. R. and Sinha, S. (2003). Nonuniform strain of human soleus aponeurosis-tendon complex during submaximal voluntary contractions in vivo. *J. Appl. Physiol.* **95**, 829-837.
- Fukashiro, S., Komi, P. V., Järvinen, M. and Miyashita, M. (1995). In vivo Achilles tendon loading during jumping in humans. *Eur. J. Appl. Physiol.* **71**, 453-458.
- Galloway, M. T., Jokl, P. and Dayton, O. W. (1992). Achilles tendon overuse injuries. *Clin. Sports Med.* **11**, 771-782.
- Gerus, P., Rao, G. and Berton, E. (2011). A method to characterize in vivo tendon force-strain relationship by combining ultrasonography, motion capture and loading rates. *J. Biomech.* **44**, 2333-2336.
- Hansen, P., Bojsen-Møller, J., Aagaard, P., Kjaer, M. and Magnusson, S. P. (2006). Mechanical properties of the human patellar tendon, in vivo. *Clin. Biomech.* **21**, 54-58.
- Hauswirth, C., Bigard, A. X. and Guezennec, C. Y. (1997). Relationships between running mechanics and energy cost of running at the end of a triathlon and a marathon. *Int. J. Sports Med.* **18**, 330-339.
- Józsa, L., Kvist, M., Bálint, B. J., Reffy, A., Järvinen, M., Lehto, M. and Barzo, M. (1989). The role of recreational sport activity in Achilles tendon rupture. A clinical, pathoanatomical, and sociological study of 292 cases. *Am. J. Sports Med.* **17**, 338-343.
- Kannus, P. and Józsa, L. (1991). Histopathological changes preceding spontaneous rupture of a tendon. A controlled study of 891 patients. *J. Bone Joint Surg. Am.* **73**, 1507-1525.
- Ker, R. F., Wang, X. T. and Pike, A. V. (2000). Fatigue quality of mammalian tendons. *J. Exp. Biol.* **203**, 1317-1327.
- Komi, P. V., Fukashiro, S. and Järvinen, M. (1992). Biomechanical loading of Achilles tendon during normal locomotion. *Clin. Sports Med.* **11**, 521-531.
- Kubo, K., Kanehisa, H., Kawakami, Y. and Fukunaga, T. (2001a). Effects of repeated muscle contractions on the tendon structures in humans. *Eur. J. Appl. Physiol.* **84**, 162-166.
- Kubo, K., Kanehisa, H., Kawakami, Y. and Fukunaga, T. (2001b). Influences of repetitive muscle contractions with different modes on tendon elasticity in vivo. *J. Appl. Physiol.* **91**, 277-282.
- Kubo, K., Kanehisa, H. and Fukunaga, T. (2005). Influences of repetitive drop jump and isometric leg press exercises on tendon properties in knee extensors. *J. Strength Cond. Res.* **19**, 864-870.
- Kvist, M. (1994). Achilles tendon injuries in athletes. *Sports Med.* **18**, 173-201.
- Kyröläinen, H., Pullinen, T., Candau, R., Avela, J., Huttunen, P. and Komi, P. V. (2000). Effects of marathon running on running economy and kinematics. *Eur. J. Appl. Physiol.* **82**, 297-304.
- Lichtwark, G. A. and Barclay, C. J. (2010). The influence of tendon compliance on muscle power output and efficiency during cyclic contractions. *J. Exp. Biol.* **213**, 707-714.
- Lichtwark, G. A. and Wilson, A. M. (2005). In vivo mechanical properties of the human Achilles tendon during one-legged hopping. *J. Exp. Biol.* **208**, 4715-4725.
- Lieberman, D. E. and Bramble, D. M. (2007). The evolution of marathon running: capabilities in humans. *Sports Med.* **37**, 288-290.
- Mademli, L., Arampatzis, A. and Walsh, M. (2006). Effect of muscle fatigue on the compliance of the gastrocnemius medialis tendon and aponeurosis. *J. Biomech.* **39**, 426-434.
- Maganaris, C. N. (2003). Tendon conditioning: artefact or property? *Proc. Biol. Sci.* **270**, 39-42.
- Maganaris, C. N. and Paul, J. P. (2002). Tensile properties of the in vivo human gastrocnemius tendon. *J. Biomech.* **35**, 1639-1646.
- Magnusson, S. P., Hansen, P., Aagaard, P., Brønd, J., Dyhre-Poulsen, P., Bojsen-Møller, J. and Kjaer, M. (2003). Differential strain patterns of the human gastrocnemius aponeurosis and free tendon, in vivo. *Acta Physiol. Scand.* **177**, 185-195.
- Malvankar, S. and Khan, W. S. (2011). Evolution of the Achilles tendon: The athlete's Achilles heel? *Foot* **21**, 193-197.
- Narici, M. V. and Maganaris, C. N. (2006). Adaptability of elderly human muscles and tendons to increased loading. *J. Anat.* **208**, 433-443.
- Peltonen, J., Cronin, N. J., Avela, J. and Finni, T. (2010). In vivo mechanical response of human Achilles tendon to a single bout of hopping exercise. *J. Exp. Biol.* **213**, 1259-1265.
- Pike, A. V., Ker, R. F. and Alexander, R. M. (2000). The development of fatigue quality in high- and low-stressed tendons of sheep (*Ovis aries*). *J. Exp. Biol.* **203**, 2187-2193.
- Pollock, C. M. and Shadwick, R. E. (1994). Relationship between body mass and biomechanical properties of limb tendons in adult mammals. *Am. J. Physiol.* **266**, R1016-R1021.
- Reeves, N. D., Maganaris, C. N., Ferretti, G. and Narici, M. V. (2005). Influence of 90-day simulated microgravity on human tendon mechanical properties and the effect of resistive countermeasures. *J. Appl. Physiol.* **98**, 2278-2286.
- Rosager, S., Aagaard, P., Dyhre-Poulsen, P., Neergaard, K., Kjaer, M. and Magnusson, S. P. (2002). Load-displacement properties of the human triceps surae aponeurosis and tendon in runners and non-runners. *Scand. J. Med. Sci. Sports* **12**, 90-98.
- Rugg, S. G., Gregor, R. J., Mandelbaum, B. R. and Chiu, L. (1990). In vivo moment arm calculations at the ankle using magnetic resonance imaging (MRI). *J. Biomech.* **23**, 495-501.
- Schechtman, H. and Bader, D. L. (1994). Dynamic characterization of human tendons. *Proc. Inst. Mech. Eng. H* **208**, 241-248.
- Schechtman, H. and Bader, D. L. (2002). Fatigue damage of human tendons. *J. Biomech.* **35**, 347-353.
- Wang, X. T. and Ker, R. F. (1995). Creep rupture of wallaby tail tendons. *J. Exp. Biol.* **198**, 831-845.
- Wang, X. T., Ker, R. F. and Alexander, R. M. (1995). Fatigue rupture of wallaby tail tendons. *J. Exp. Biol.* **198**, 847-852.
- Westh, E., Kongsgaard, M., Bojsen-Møller, J., Aagaard, P., Hansen, M., Kjaer, M. and Magnusson, S. P. (2008). Effect of habitual exercise on the structural and mechanical properties of human tendon, in vivo, in men and women. *Scand. J. Med. Sci. Sports* **18**, 23-30.
- Wren, T. A. L., Lindsey, D. P., Beaupré, G. S. and Carter, D. R. (2003). Effects of creep and cyclic loading on the mechanical properties and failure of human Achilles tendons. *Ann. Biomed. Eng.* **31**, 710-717.